

Towards virtual training of emotion regulation

Tibor Bosse · Charlotte Gerritsen · Jeroen de Man ·
Jan Treur

Received: 23 April 2014 / Accepted: 10 September 2014 / Published online: 26 September 2014
© The Author(s) 2014. This article is published with open access at Springerlink.com

Abstract For professionals in military and law enforcement domains, learning to regulate one's emotions under threatening circumstances is crucial. The STRESS project envisions a virtual reality-based system to enable such professionals to train their emotion regulation skills. To explore the possibilities for such a system, this article describes an experiment performed to investigate the impact of virtual training on participants' experienced emotional responses in threatening situations. A set of 15 participants were asked to rate the subjective emotional intensity of a set of affective pictures at two different time points, separated by 6 h. The participants were divided into three groups: the first group performed a session of virtual training in between, in which they received a choice-reaction task; the second group performed a session of virtual training, in which they had to apply reappraisal strategies; and a control group, that did not have any training session. The results indicate that the reappraisal-based training caused the participants in that group to give

significantly lower ratings for the emotional intensity of the negative pictures, whereas the content-based training resulted in significantly higher ratings compared to the group without training. Moreover, a second experiment, performed with the same participants 6 months later, indicated that these effects are fairly persistent over time, and that they transfer to different pictures with similar characteristics.

Keywords Virtual training · Emotion regulation · Emotional response

1 Introduction

The ability to cope with negative stimuli from the environment is a useful characteristic of human beings. Almost on a daily basis, we are confronted with situations that in one way or the other invoke negative emotions. A particular type of negative emotion, which is typically induced by perceived threats, is *fear* [3]. Depending on the person, different types of stimuli that may trigger fear vary from horror movies and scary animals to enclosed spaces and public speaking. The probability of being confronted with such stimuli depends, among others, on the person's profession. On average, professionals in domains such as the police, military and public transport are more likely to be confronted with fear-inducing stimuli than people with an office job. It is therefore not surprising that these types of job are usually more appropriate for people who are strong at regulating their levels of fear.

Nevertheless, even the 'coolest' of individuals may have difficulties to function adequately in case the stimuli are extreme, such as in cases of military missions or terrorist attacks. First, the extreme emotions experienced in these

Parts of this article appeared in Bosse et al [1, 2].

T. Bosse · C. Gerritsen · J. de Man · J. Treur
Agent Systems Research Group, Vrije Universiteit Amsterdam,
De Boelelaan 1081, 1081 HV Amsterdam, The Netherlands
e-mail: t.bosse@vu.nl

J. de Man
e-mail: j.de.man@vu.nl; jdeman@nscr.nl

J. Treur
e-mail: j.treur@vu.nl

C. Gerritsen (✉) · J. de Man
Netherlands Institute for the Study of Crime and Law
Enforcement, De Boelelaan 1077a, 1081 HV Amsterdam,
The Netherlands
e-mail: CGerritsen@nscr.nl; c2.gerritsen@vu.nl

situations may impair their cognitive processes like attention and decision making [4, 5]. And second, even if they make optimal decisions from an external perspective, they have an increased risk of developing anxiety related disorders such as post-traumatic stress disorder (PTSD) [6]. For these reasons, much time and money is spent on developing appropriate training in these domains. Increasingly, often, virtual environments are successfully used to train performance and decision making of professionals under more realistic and stressful situations (see for example [7] or [8]). Furthermore, methods to prevent or treat PTSD after a traumatic event are costly and may even have negative effects [9]. *Primary prevention*, before any traumatic event has occurred, has been proposed as a promising alternative [10, 11]. A promising technique for primary prevention, which has recently received much attention, is ‘stress inoculation training’ based on virtual reality (VR). The assumption behind this approach is that, by gradually exposing a trainee to fear-provoking stimuli, a VR system is able to increase her ‘mental readiness’ [12, 13]. In that sense, this approach has similarities with exposure therapy [14, 15]. VR-based stress training has proved to be successful, among others, for bank employees [16] and airline crew [17], to increase preparation for hostage situations.

The research presented in this article is part of a large project called STRESS, which stands for simulation-based training of resilience in emergencies and stressful situations (<http://stress.few.vu.nl>). The main aim of the project as a whole is to develop an intelligent system that is able to analyse human emotion regulation and decision making processes in threatening circumstances, and analyse the causes of incorrect decisions and inadequate stress regulation. The system will be incorporated in an electronic training environment for employees in the public domain, based on VR, cf. [18]. In this environment, trainees will be placed in a virtual scenario, in which they have to make difficult decisions, while negative emotions are induced. During the scenario, modern human computer interaction (HCI) techniques will be applied to measure their emotional state. This information will then be used as input for the intelligent system, to determine why the trainee made certain less optimal decisions and to teach her how to improve this.

The current article focuses on three questions that are relevant for the development of this training environment:

- (1) What type of training should be provided in order to maximise training effectiveness in reducing negative emotional effects?
- (2) What are the long-term effects of such types of training?

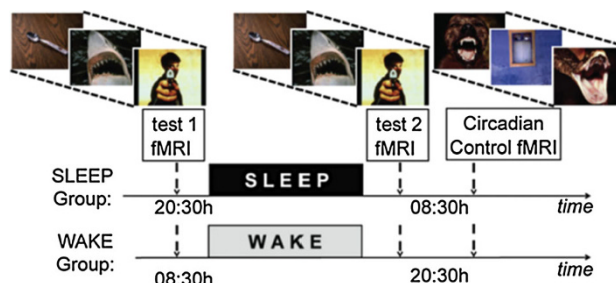


Fig. 1 Experimental design used in [21]

- (3) To what extent is there transfer of training to different, but comparable stimuli?

The article makes some steps towards the investigation of these research questions by means of an experiment where participants were exposed to negative stimuli via a computer screen. The article is organised as follows. In Sect. 2, some theoretical background of the research is reviewed. Next, in Sect. 3, an experiment is introduced that was used to assess the impact of different types of virtual training on the experienced emotional intensity towards the stimuli presented. The experiment involves a first part that was mainly designed to investigate research question (1), and a second part (performed after 6 months) to address research question (2) and (3). In Sect. 4, the results of the experiment are presented, and Sect. 5 concludes the article with a discussion.

2 Theoretical background

Driven by the goal to develop a virtual environment to train mental readiness, it should be possible to obtain a learned effect of successfully lowering subjects’ stress responses for future situations in such an environment. Type of instructions given to the trainees, in order to obtain a successful learning process, are of great importance. Previous research outside the VR domain (e.g., [19]) suggests that the effectiveness of exposure therapy is partly determined by the specific type of therapy and the task instructions (e.g., related to emotion regulation) that are prescribed to the participant. To investigate the possibilities, we conducted an experiment in which participants’ reactions to viewing negative pictures from the International Affective Picture System (IAPS) picture set [20] were assessed, and the impact of performing reappraisal-based training in a VR environment was studied.

The setup of this experiment, which is described in the next section, was inspired by an experiment by Helm et al. in the context of rapid eye movement (REM) sleep [21]. According to recent cognitive and neurological literature,

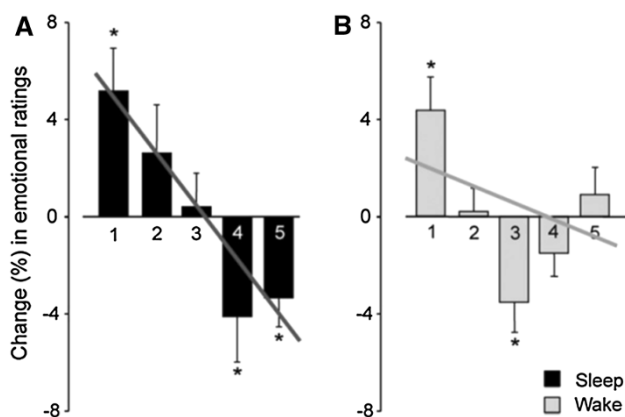


Fig. 2 Relative change in emotional ratings depicted in [21]

there are striking similarities between virtual exposure therapy and dreaming. In particular, the process of dreaming makes use of memory elements and their associated emotions to generate ‘virtual simulations’, and strengthening of regulation of negative emotions is considered an important purpose of dreaming [22]. For this reason, the idea was to test whether virtual training has a similar effect on emotional responses as is reported in Helm et al.’s experiments [21] about REM sleep. More specifically, in that paper, the experimental design displayed in Fig. 1 was used. The authors summarise the experiment as follows:

34 healthy adults (age: 18–30 years) were randomly assigned to one of two groups. Each performed two repeat fMRI tests (test 1, test 2), separated by 12 h containing a night of EEG-recorded sleep (sleep group, $n = 18$, ten females) or a waking day (wake group, $n = 16$, nine females). During each test, participants viewed and rated the subjective emotional intensity of 150 standardised affective pictures on a 1–5 scale, corresponding to increasing intensity. Importantly, participants viewed the same stimuli at both test sessions, affording a measure of change in emotional reactivity to previously experienced affective stimuli (test2–test1), following wake or sleep. Participants additionally performed a circadian control test at the second fMRI session, involving presentation of a novel set of affective stimuli. This control test allowed confirmation that behavioural and fMRI differences in reactivity identified following wake and sleep were independent of time of day. [21]

The results of this experiment showed, among others, that the decrease (between the first and the second test) in subjective emotional ratings of the affective pictures was significantly lower in the sleep group than in the wake group. More specifically, Fig. 2 shows for both the sleep

group and the wake group, the relative change in emotional ratings between the first and the second test. For example, the sleep group gave almost 4 % fewer 5-ratings (i.e., the highest subjective ratings for emotional intensity) in the second test, whereas the wake group gave a bit more 5-ratings.

In the next section, our variant of this experiment is described, in which the difference between sleep and wake is replaced by the difference between virtual training and no virtual training.

3 Experimental design

The first research question addressed is what type of VR-based training is appropriate, in order to obtain a successful decrease of emotional responses towards negative stimuli. As mentioned above, the effectiveness of exposure therapy is partly determined by the way the person deals with the negative stimuli. Within the context of virtual training, a number of strategies can be used, varying from just looking at the stimuli to performing different emotion regulation strategies such as ‘attentional deployment’ (i.e., directing one’s attention away from the emotional stimulus), ‘cognitive change’ (i.e., changing how one appraises a stimulus so as to alter its emotional meaning), and ‘suppression’ (i.e., inhibiting one’s emotional expression) [23]. As a first step to investigate and compare the effects of different strategies, an experiment was performed in which participants’ reactions to viewing negative pictures from the IAPS picture set, ‘developed to provide a set of normative emotional stimuli’ [20], were assessed for two different types of training. The setup of this experiment is described in the current section.

3.1 Participants

Fifteen healthy adults (of age between 26 and 32 years, with a mean of 28.2) participated in the experiment, and were randomly assigned to one of three groups (to which we will refer as the ‘training 1’ group, the ‘training 2’ group and the ‘no training’ group), in such a way that each group consisted of 5 participants. Six of the participants were female and nine were male.

3.2 Setup

In the first part of the experiment, the participants in the control (no training) group participated in two rounds, separated by a pause of 6 h (see Fig. 3, lowest line, test 1 and 2). In these rounds they were presented 5 times 30 pictures from the IAPS picture set [20]. The sets of pictures used were identical to the sets used by Helm et al. [21],



Fig. 3 Experimental setup

covering pictures with valence scores ranging from 1.45 (negative) to 8.28 (positive) and arousal scores from 2.28 (low) to 7.12 (high), according to the standard IAPS classification (ranging from 1 to 9). The participants were first shown a black fixation mark for 500 ms, after which the image was shown for 2000 ms. For 2500 ms after the image, a question was shown asking the participants to rate the emotional intensity of the picture on a scale from 1 to 5 (1 being non emotional and 5 being very emotional).¹ Finally, for another 2700 ms a grey fixation mark was shown, followed by the same sequence for the next image, and so on. The images were shown in 5 blocks of 30 images with small breaks (of about 45 s) in between. Image order was fixed for each block of images, but the order of blocks was randomised between participants. For a total of 150 images, the participants needed approximately 20–25 min to complete the test. Furthermore, the heart rate and the skin conductance of the participants were measured with the PLUX wireless sensor device (<http://www.plux.info/>).² See Fig. 3 for a picture of the experimental setup.

The participants in both training groups also participated in these rounds, just like the control group. However, in between these two rounds they performed a virtual training session. This training occurred 3 h after the first round and 3 h before the second round (see Fig. 1, upper and middle line). The virtual training made use of the same pictures used in the other rounds. Within the training 1 group, the participants were given a choice-reaction task in which they had to assess the valence of the picture as quickly as

¹ Note that this intensity was independent of the ‘valence’ of the picture (i.e., pos. vs. neg).

² The results of these measurements are not further discussed in this paper. They were collected to gain more insight in the relation between the presented stimuli and physiological states, which will be further explored in a follow-up experiment.

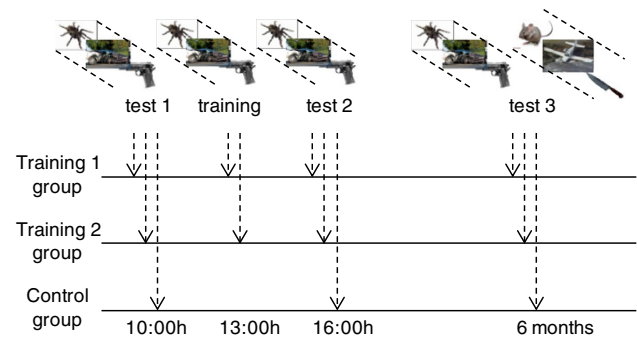


Fig. 4 Experimental design

possible while the image increased in size up to double the size of the original picture (i.e., whether it gave them a positive or a negative emotion). They could make this distinction by either clicking the mouse or pressing the spacebar. Within the training 2 group, the participants were asked to view them while actively reducing their emotional response until they felt comfortable looking at the picture (e.g., by assuring themselves that the pictures were not real). The motivation for using these two types of training is that we wanted to investigate the impact of type of training and task instructions (i.e., learning to work with potentially negative stimuli in a dynamic context versus learning to cope with negative stimuli directly by performing reappraisal) on subjective emotional response. Although a large number of emotion regulation strategies exist, we selected reappraisal because this strategy has proven successful in a number of related domains (e.g. [24]).

In addition to the above, the participants in all three groups participated in a second part of the experiment, which was performed in the afternoon 6 months after the first part.³ This second part was the same for all three groups (see Fig. 4, test 3). In this part, participants were presented the same 5×30 pictures from the IAPS picture set as presented in the first part, and were again asked to rate the emotional intensity of the pictures on a scale from 1 to 5. This was done to address the second research question mentioned above, i.e., studying the long-term effects of the different types of training. Next, after a short break, they were again presented 5×30 pictures from the IAPS picture set, which were new pictures, but with similar valence and arousal scores as the first 5×30 pictures. This was done to find out whether there was any transfer of the training to different pictures, thereby addressing the third research question.

3.3 Implementation

Both the test environment and the two training environments were implemented using the PsychoPy software

³ In both the control and training 2 group one participant dropped out.

(<http://www.psychopy.org/>). This package provides an API for creating psychological experiments using the programming language Python. In combination with the Python API provided by PLUX, all ingredients for implementing both environments were available. The implementation itself is relatively straightforward, looping through the different images in fixed intervals and recording both the physiological measurements from the PLUX device as well as the manual responses from the participants.

4 Results

The results of the experiment will be described in three separate sub-sections, addressing the three respective research questions. First, for the first part of the experiment, the two types of training are compared with the control group. Recall that the difference between the three groups was the following:

- Control group: no training
- Training 1 group: choice-reaction task
- Training 2 group: reappraisal task

After this comparison, we investigate whether these types of training have lasting effects, based on the second part of the experiment. Finally, data gathered with a new set of images is compared to the original set to find out if transfer of learning takes place between similar images.

4.1 Type of training

Figure 5 shows for all 150 pictures (horizontal axis) the absolute change in emotional ratings (averaged over all participants, vertical axis) between the first and the second test, both for the control group and the two training groups. Pictures are sorted as follows: pictures with a negative valence (i.e., a value smaller than 4.5 according to the IAPS classification) are shown on the left and those with a positive valence on the right hand side. Note that we are particularly interested in the negative images, since emotional regulation training usually aims at decreasing emotional response to negative stimuli. Moreover, both the negative and the positive pictures are sorted with respect to the change in emotional rating of the control group (the solid red line). As can be seen, the curve for the control group is situated around 0 (mean value -0.05), whereas the curves of both training groups are lower (mean value ‘training 1’ -0.11 ; ‘training 2’ -0.4). A paired t test confirmed that training 2 significantly lowered the emotional ratings more than the control group [$t(149) = -8.15$, $p < 0.001$]. However, this change was not significant for the training 1 group [$t(149) = -1.34$, $p = 0.18$]. This

indicates that, for this set of participants,⁴ training 2 resulted in significantly lower ratings of the images in the second test.

If we focus on only those images that are negatively valenced (left part of the graph in Fig. 5), the results are different. The mean change for the control group is slightly lower at -0.11 . Training 1 resulted in an increase of emotional ratings with a mean change of 0.11 , while training 2 still has a mean change of -0.39 . Both these changes were confirmed to be significant with $t(56) = 3.32$, $p = 0.0016$ for training 1 and $t(56) = -4.65$, $p < 0.001$ for training 2. From this we conclude that, again for this set of participants, training 1 resulted in a significant increase of emotional ratings for negative images, while training 2 significantly decreased emotional ratings for those images.

In addition, Fig. 6 shows for both the training groups and the control group, the relative change in emotional ratings between the first and the second round. On the horizontal axis ratings from 1 to 5 are shown. Each bar represents the percentage change between the first and second round for one particular group for that rating. Thus, a positive change represents an increase in the absolute number of pictures that were given that rating in the afternoon.

Looking at the left graph, showing the results for all images, it can be seen that there are small differences between the control group and training 1, in line with the findings above. For training 2, it is clear that there is a decrease in the pictures with a high rating and a corresponding increase of pictures with a low rating.

Focussing on only those images with a negative valence as shown in Fig. 6 on the right, the results for both the control group and training 2 show a similar pattern compared with all images. However, for training 1, a trend can be seen towards the higher emotional ratings. This is in compliance with the results above, where we found a significant increase of the mean ratings for this group.

Finally, in addition to comparing the absolute (Fig. 5) as well as the relative (Fig. 6) change in emotional ratings among the different groups, we explicitly compared the average rating given in the afternoon with those given in

⁴ This test took, for each of the 150 pictures, the average change in rating given by the participants in the training group, and compared this with the average change in rating given to the same picture by the participants in the control group. Since this way of testing takes the pictures (instead of the participants) as a basis, the results cannot be generalised for the population as a whole. However, an additional (unpaired two sample) t -test has been performed in which for each participant the average change in rating over all 150 pictures was calculated, and these averages were used to compare the training 2 with the control group. Due to the low number of participants, these results were not statistically significant on the $p < 0.05$ level, but a clear trend was found in the results (with $t(8) = 2.05$, $p = 0.07$).

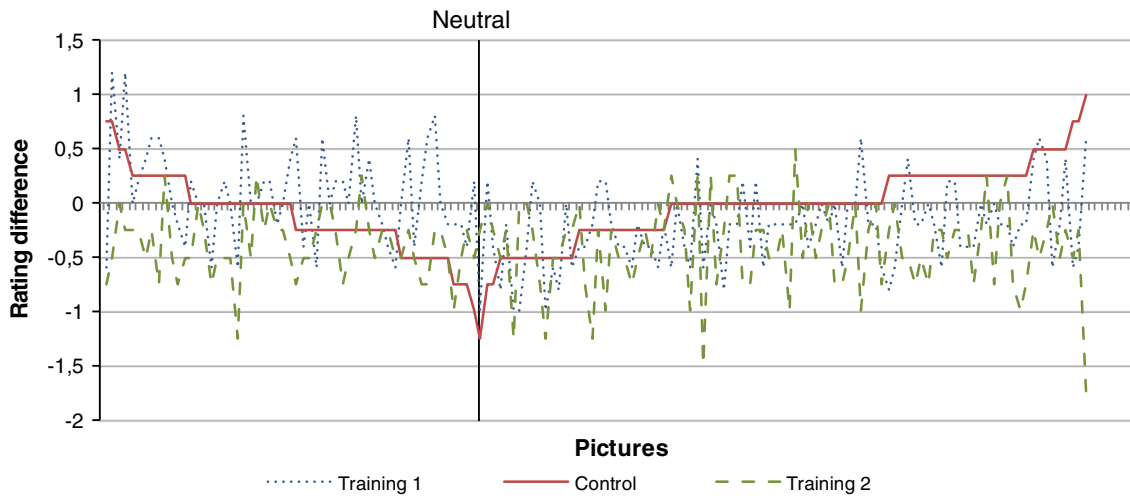
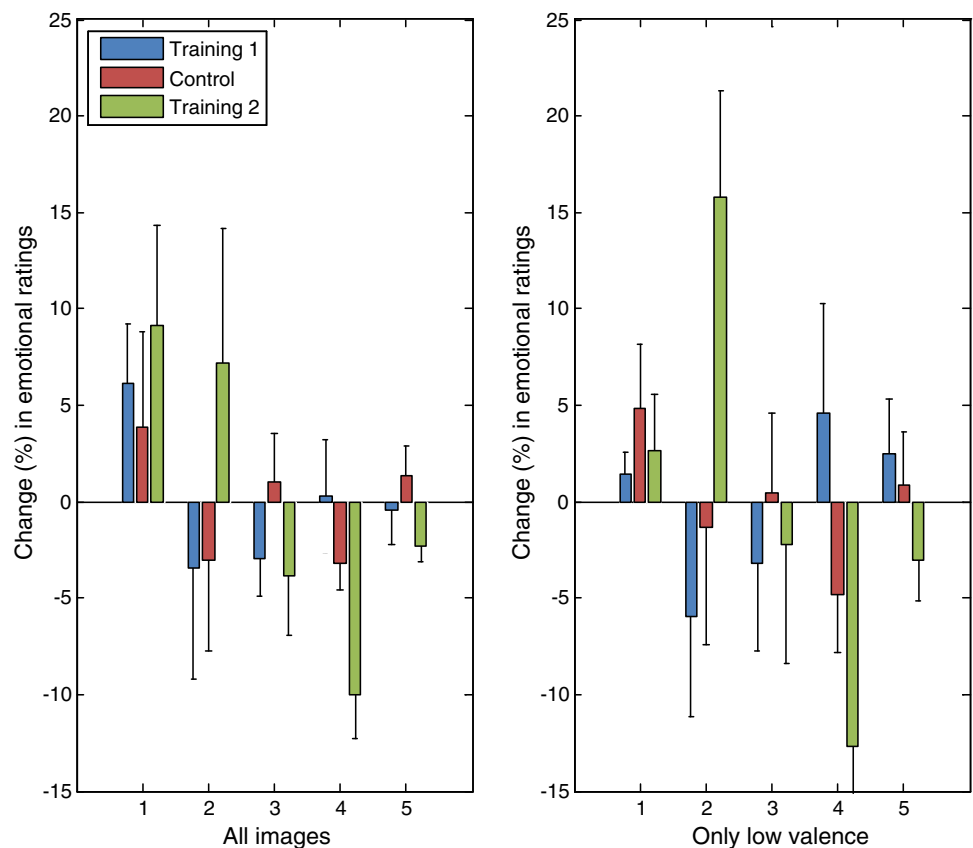


Fig. 5 Absolute change in emotional ratings for 150 pictures (averaged over all participants)

Fig. 6 Relative change in emotional ratings



the morning for each group individually (Fig. 7). We found that training 2 is the only group in which a significant drop of emotional ratings has occurred for all images [$t(3) = 7.57, p = 0.048$] as well as for only the negative images [$t(3) = 9.69, p = 0.023$]. For both the control group and training 1 the differences between the morning and afternoon measurements were not significant. This provides strong evidence for the hypothesis that

reappraisal-based virtual training can be used to reduce subjects' emotional responses to negative stimuli at later times.

4.2 Six months later

Figure 8 shows the subjective emotional ratings for the two measurements (test 1 and 2, i.e., morning and afternoon) in

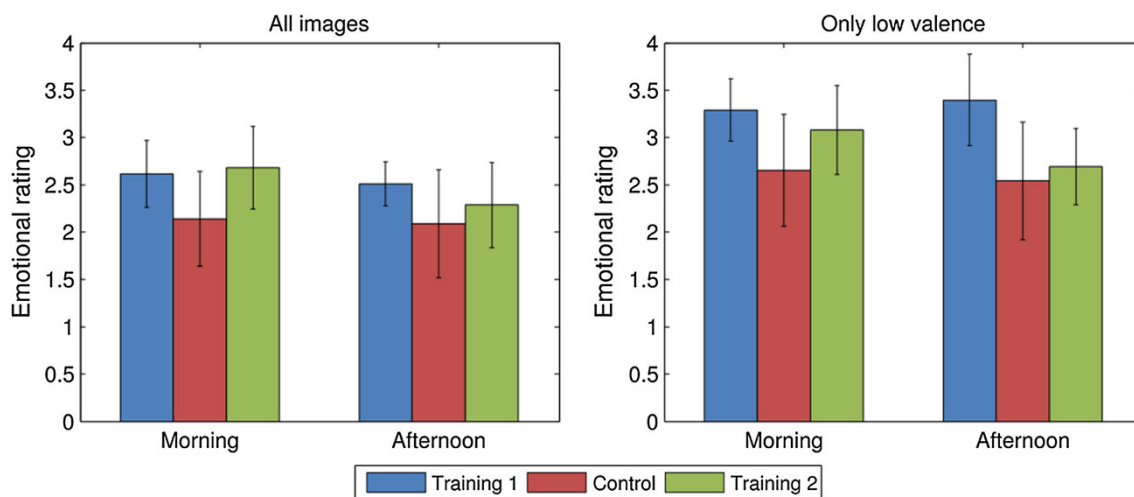


Fig. 7 Absolute change in emotional ratings

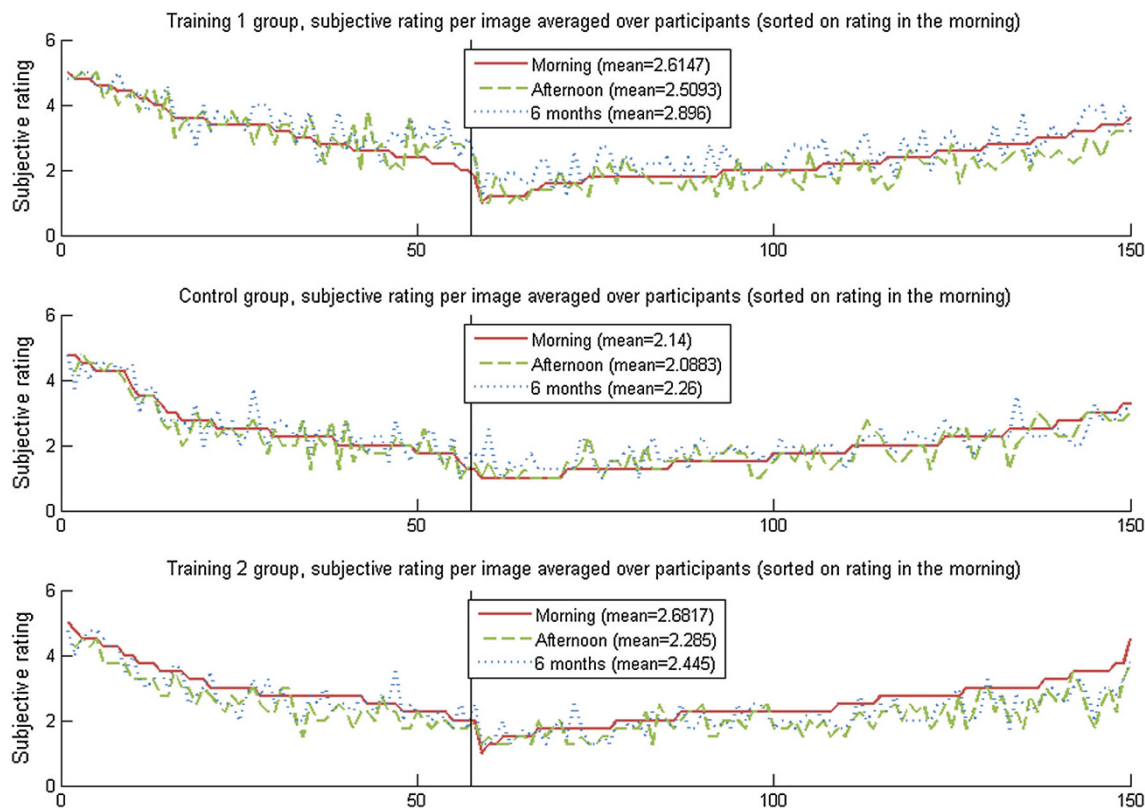


Fig. 8 Emotional ratings for 3 different points in time

the first part of the experiment as well as the same measurement (test 3) using the same participants 6 months later. Pictures are sorted on the emotional rating given during the first measurement, such that those pictures with a negative valence are shown on the left and those with a positive valence on the right hand side. For the control group (middle graph), it can be seen that both later

measurements vary around the initial ratings given for those images, and even so no significant differences were found.

For training 1 (top graph) the difference is harder to see. However, statistically, the measurement in the afternoon gave slightly lower ratings overall [$t(149) = 3.0478, p = 0.0027$], while 6 months later the ratings had increased

compared to the first measurement [$t(149) = -8.1722$, $p < 0.0001$]. Taking into account only the negative images, the mean rating increased from 3.29 in the morning, via 3.40 in the afternoon, to 3.56 after 6 months, with both the difference between the morning and the 6 months as well as that between the afternoon and 6 months measurement being significant [$t(56) = -4.4742$, $p < 0.0001$ and $t(56) = -2.6364$, $p = 0.011$ respectively].

The lower graph in Fig. 8 (training 2) shows that both the measurement taken in the afternoon and the one taken 6 months later resulted on average in lower ratings, whereby the ratings after 6 months roughly lie between the ratings of the other two time points measured. Furthermore, all these differences are statistically significant with $p < 0.0001$. Regarding the negative images, similar results are found with statistical significance of $p < 0.001$.

Thus, after 6 months, the control group still had a similar response towards the images as they had initially. The participants taking part in training 1 already showed an increased response towards the negative images in the afternoon, and after 6 months this had increased even more for the negative images as well as the complete set of images. The lowered emotional response caused by training 2 was still present (and significant) after 6 months, albeit less pronounced.

4.3 Transfer of training

Six months after the initial experiment, each participant also rated a second set of images on the emotional intensity. Those images were randomly selected from the remaining IAPS pictures, with the constraint that the set as a whole matched to the first set on both valence and arousal. Figure 9 shows the differences in ratings between the initial measurement of the first set of pictures and the ratings for the new images after 6 months. If transfer of training would take place, or in case of the control group with no training at all, similar results would be expected for both sets of stimuli. This can also be seen in the graph, where the curve for the control group is situated very closely around 0. As expected, for this group no significant differences were found using an unpaired t -test for either all images or only the negative ones [$t(298) = -0.3462$, $p = 0.73$; $t(113) = -0.0933$, $p = 0.93$].

Furthermore, Fig. 9 shows very few differences between the control group and training 1, indicating little transfer regarding this type of training. An unpaired t test confirms this: $t(298) = -0.62703$, $p = 0.73$ for all images and $t(113) = -1.0934$, $p = 0.14$ for the negative ones. For training 2, the mean rating has dropped, which can also be seen in Fig. 9. These differences were significant for all images [$t(298) = 4.342$, $p < 0.0001$] as well as for only the negative pictures [$t(113) = 1.7808$, $p = 0.039$]. Thus,

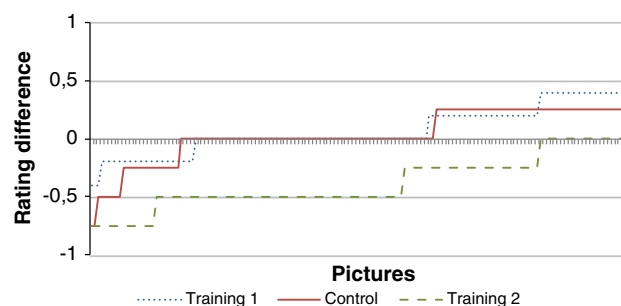


Fig. 9 Differences in emotional ratings between two different sets of pictures

although no transfer can be shown for training 1, transfer does seem to take place for training 2.

5 Discussion

In this paper an experiment is reported addressing the impact of virtual training on participants' experienced emotional responses towards negative stimuli. Participants were asked to rate the subjective emotional intensity of a set of affective pictures at two different points in time. The participants were divided into a first group performing a session of virtual training in between these time points, a second group performing virtual training thereby applying reappraisal strategies, and a control group without any training session. The results are that the reappraisal-based training caused the participants in that group to give significantly lower ratings for the emotional intensity of the negative pictures, whereas the content-based training resulted in significantly higher ratings compared to the group without training. Moreover, a second experiment, performed with the same participants 6 months later, indicated that these effects are fairly persistent over time, and that transfer to pictures with similar characteristics takes place.

The outcomes of this experiment indicate that, depending on its setup, virtual training may either strengthen the emotional responses to stimuli or weaken them. The fact that the first group shows enhanced responses might be explained by a form of fear conditioning (e.g., [25]) taking place in this setup. By presenting the stimuli in an active, dynamic manner, and by asking the subjects to perform an action as a response, a state of enhanced attention on the stimuli was induced, which may have an opposite effect compared to, for example, the emotion regulation strategy called attention deployment (cf. [23]), and by a process of fear conditioning this may lead to a form of up-regulation as opposed to down-regulation. In contrast to this, in the second group it was explicitly asked to apply an emotion regulation strategy based on reappraisal (cf. [23]). The

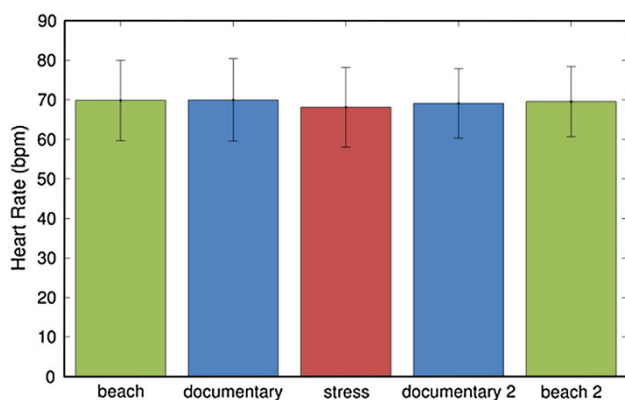


Fig. 10 Average heart rate and standard deviation for each video clip (taken from [28])

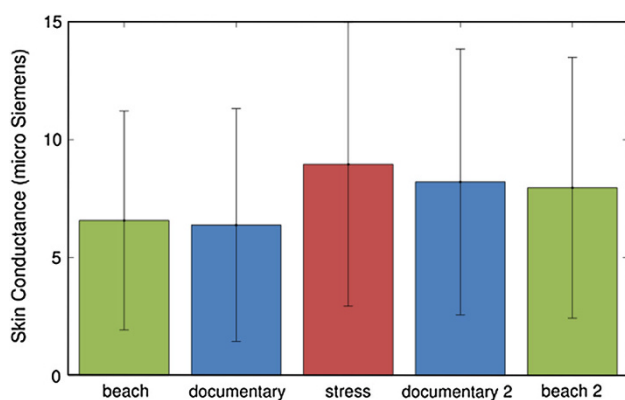


Fig. 11 Average heart rate and standard deviation for each video clip (taken from [28])

outcomes indicate that indeed such a setup can strengthen the emotion regulation, which can be explained as inducing a form of fear extinction learning [26, 27].

As a next step, an exploration has been made regarding the possibilities to induce a stress response through video material. Preliminary results of this exploration are reported in [28]. Here, a pilot experiment has been performed in which participants were asked to watch five different video clips while their emotional response was measured via physiological measurements as well as questionnaires. Among the five movies, the third one was composed in such a way that it could be experienced as being stressful, whereas the clip prior to this movie designed to serve as a neutral movie, to determine the baseline level of heart rate and skin conductance of the participants. The results of the measurements showed that the heart rate of the subjects did not differ significantly during the stressful video clip compared to the other four video clips (see Fig. 10). Instead, the skin conductance of the participants increased significantly during the stressful clip (see Fig. 11), and the

same held for the subjective ratings. Hence, we conclude that it is also possible to generate a stress response by means of video material, and that skin conductance is an effective indicator to measure this.

For further research, it is planned to perform more experiments like this, with more participants and a greater focus on interpersonal differences. At the moment, similar experiments are being conducted with different types of stimuli (such as sounds and games [29]) to elicit emotional responses. An interesting additional element here is a personality questionnaire to consider individual differences in relation to for example specific personality traits. This opens up the possibility to investigate whether particular personality traits indicate what type of training would be most beneficial for that particular person.

Finally, the aim of the project is to build a VR training environment in which the knowledge acquired is incorporated. In this respect, care should be taken not to over-generalise the results of the current study. It is obvious that there is still a large gap in realism between scary images or video clips on the one hand, and confrontations with real-world threatening stimuli on the other hand. As this gap cannot be closed by means of one single study, the STRESS project takes an incremental approach, where we gradually try to increase realism of the presented stimuli. For instance, in a study that is currently in progress, an experiment is performed in which participants are actually confronted with virtual reality-based stimuli. More specifically, they are interacting with a virtual character, which at some point starts behaving aggressively towards the participant. In addition, another group of participants is being confronted with a real human (an actress), who starts behaving aggressively as well, in the exact same manner as the virtual agent does. Initial results of this experiment are promising: they indicate that in both conditions, the threatening event invokes subjective and physiological responses in the participants, although there are still some subtle differences between the virtual and the real stimuli. In follow-up research, the nature of these differences, as well as their implications for training purposes, will be studied in more detail.

Acknowledgments This research was supported by funding from the National Initiative Brain and Cognition, coordinated by the Netherlands Organisation for Scientific Research (NWO), under grant agreement No. 056-25-013. The authors are grateful to Els van der Helm and colleagues for sharing the details of their research with us, to Rianne van Lambalgen for her help regarding the statistical analysis, and all participants of the experiments.

Open Access This article is distributed under the terms of the Creative Commons Attribution License which permits any use, distribution, and reproduction in any medium, provided the original author(s) and the source are credited.

References

- Bosse T, Gerritsen C, Man J. de, Treur J. (2012). Measuring stress-reducing effects of virtual training based on subjective response. In: Huang T et al. (eds) Proceedings of the 19th international conference on neural information processing, ICNIP'12, part I. Lecture notes in computer science, vol 7663. Springer-Verlag, Berlin Heidelberg, pp 322–330
- Bosse T, Gerritsen C, Man J. de, Treur J (2013) Effects of virtual training on emotional response: a comparison between different emotion regulation strategies. In: Proceedings of the 7th international conference on brain and health informatics, BHI'13. Lecture notes in artificial intelligence. Springer-Verlag, Berlin Heidelberg, pp 21–31
- Öhman A (2000) Fear and anxiety: evolutionary, cognitive, and clinical perspectives. In: Lewis M, Haviland-Jones JM (eds) Handbook of emotions. The Guilford Press, New York, pp 573–593
- Loewenstein GF, Lerner JS (2002) The role of affect in decision making. In: Davidson R, Scherer K, Goldsmith H (eds) Handbook of affective science. Oxford University Press, New York, pp 619–642
- Ozel F (2001) Time pressure and stress as a factor during emergency egress. *Saf Sci* 38:95–107
- Brewin CR, Andrews B, Valentine JD (2000) Meta-analysis of risk factors for posttraumatic stress disorder in trauma-exposed adults. *J Consult Clin Psychol* 68(5):748–766
- Bouchard S, Guitard T, Bernier F, Robillard G (2011) Virtual reality and the training of military personnel to cope with acute stressors. In: Advanced computational intelligence paradigms in healthcare 6. Virtual reality in psychotherapy, rehabilitation, and assessment. Springer Berlin Heidelberg, pp 109–128
- Graafland M, Schraagen JM, Schijven MP (2012) Systematic review of serious games for medical education and surgical skills training. *Br J Surg* 99(10):1322–1330
- van Emmerik AA, Kamphuis JH, Hulsbosch AM, Emmelkamp PM (2002) Single session debriefing after psychological trauma: a meta-analysis. *Lancet* 360(9335):766–771
- Deahl M (1998) Traumatic stress-is prevention better than cure? *J R Soc Med* 91(1998):531–533
- Deahl M, Srinivasan M, Jones N, Thomas J, Neblett C, Jolly A (2000) Preventing psychological trauma in soldiers: the role of operational stress training and psychological debriefing. *Br J Med Psychol* 73(1):77–85
- Popović S, Horvat M, Kukulja D, Dropuljić B, Ćosić K (2009) Stress inoculation training supported by physiology-driven adaptive virtual reality stimulation. *Stud Health Technol Inform* 144(2009):50–54
- Rizzo AA, Reger G, Gahm G, Difede J, Rothbaum BO (2008) Virtual reality exposure therapy for combat related PTSD. In: Shiromani P, Keane T, LeDoux J (eds) Post-traumatic stress disorder: basic science and clinical practice, Springer Verlag, New York
- Foa EB, Dancu CV, Hembree EA, Jaycox LH, Meadows EA, Street GP (1999) A comparison of exposure therapy, stress inoculation training, and their combination for reducing post-traumatic stress disorder in female assault victims. *J Consult Clin Psychol* 67:194–200
- Krijn M, Emmelkamp PMG, Olafsson RP, Biemond R (2004) Virtual reality exposure therapy of anxiety disorders: a review. *Clin Psychol Rev* 24(3):259–281
- Markus E (2000) Antwoord op agressie, het effect van training op het omgaan met agressief klantgedrag en bankovervallen. Ph.D. Thesis (in Dutch), Erasmus Universiteit, Rotterdam
- Strentz T, Auerbach SM (1988) Adjustment to the stress of simulated captivity: effects of emotion-focussed versus problem-focused preparation on hostages differing in locus of control. *J Pers Soc Psychol* 55(4):652–660
- Marsella S, Gratch J (2002) Modeling the influence of emotion on belief for virtual training simulations. In: Proceedings of the 11th conference on computer-generated forces and behavior representation, Orlando, FL, May 2002
- Muris P, de Jong P, Merckelbach H, van Zuuren F (1993) Is exposure therapy outcome affected by a monitoring coping style? *Adv Behav Res Ther* 15:291–300
- Lang PJ, Bradley MM, Cuthbert BN (1999) International affective picture system (IAPS): technical manual and affective ratings. The Center for Research in Psychophysiology, University of Florida, Gainesville, FL
- van der Helm E, Yao J, Dutt S, Rao V, Saletin JM, Walker MP (2011) REM sleep deopotentiates amygdala activity to previous emotional experiences. *Curr Biol* 21(23):2029–2032
- Levin R, Nielson TA (2007) Disturbed dreaming, posttraumatic stress disorder, and affect distress: a review and neurocognitive model. *Psychol Bull* 133:482–528
- Gross JJ (2001) Emotion regulation in adulthood: timing is everything. *Curr Dir Psychol Sci* 10(6):214–219
- Berking M, Meier C, Wupperman P (2010) Enhancing emotion-regulation skills in police officers: results of a pilot controlled study. *Behav Ther* 41(3):329–339
- Maren S (2001) Neurobiology of pavlovian fear conditioning. *Annu Rev Neurosci* 24:897–931
- Myers KM, Davis M (2007) Mechanisms of fear extinction. *Molecular Psychiatry* 12:120–150
- Quirk GJ, Mueller D (2008) Neural mechanisms of extinction learning and retrieval. *Neuropsychopharmacology* 33:56–72
- Bosse T, Gerritsen C, Man J de, Stam M (2014) Inducing anxiety through video material. In: HCI international 2014—posters' extended abstracts. Springer Verlag, pp 301–306
- Cusveller JJ, Gerritsen C, Man J de (2014) Evoking and measuring arousal in game setting. In: Göbel S, Wiedemeyer J (eds) Proceedings of the 3rd international conference on serious games, GameDays 2014, vol 8395. Springer LNCS, pp 165–174

Tibor Bosse is an Assistant Professor in the Agent Systems Research Group at the Department of Computer Science at VU University Amsterdam since 2006. His research focuses on computational (agent-based) modelling and simulation of human-related (social, cognitive, and physiological) processes. The developed models are used both for theoretical purposes (to gain a deeper understanding of the processes themselves) and for practical applications, for instance, in the domains of Ambient Intelligence, Education and Training, Serious Gaming, Human-Computer Interaction, and Human Factors Design. He has acquired research funding from national as well as international organisations on a regular basis. Since a number of years, his main area of interest has become Serious Gaming. Among others, he coordinates the STRESS project on simulation-based training of public service workers. Specifically, he has an interest in the application of affective computing and cognitive modelling to develop more effective games. He uses the agent paradigm in two ways, namely for the development of (1) more human-like virtual characters and (2) intelligent virtual tutors. His extensive publication list (see <http://www.few.vu.nl/~tbosse/papers.html>) covers more than 150 papers in the major journals and conferences within Artificial Intelligence, Modelling and Simulation, Cognitive Science, and AI Applications, as well as a number of edited books in those areas. Also, he has served in the Organising and Programme Committees of a large number of international conferences and workshops in those areas. In particular, he is the co-initiator and main organiser of the workshop series on Human Aspects in Ambient Intelligence (HAI), which have been held annually since 2007, and he was appointed as

organising chair for the 26th International Conference on Industrial, Engineering and Other Applications of Applied Intelligent Systems (IEA/AIE'13).

Charlotte Gerritsen is a Post-Doc researcher at the Netherlands Institute for the Study of Crime and Law Enforcement (NSCR) and in the Agent Systems Research Group at VU University Amsterdam. During her Ph.D. Project (2007–2010), she explored the possibilities to apply techniques from the area of Artificial Intelligence (AI), such as agent-based modelling and simulation, to the field of Criminology. From a criminological perspective, the development of these computational models has shed more light on why and how certain crime-related processes emerge. From an AI perspective, the studies have functioned as case studies for the development and testing of an advanced methodology to study social processes, thereby addressing issues such as scalability and the integration of models at different abstraction levels. Since the defence of her thesis, she has broadened her research interests to include applications of Serious Gaming, and more specifically the use of Virtual Environments for therapy and training purposes. Currently she is involved in the STRESS project, which aims to develop an intelligent training system for decision making under stressful circumstances. The system is developed in cooperation with the Dutch Police Academy and the Amsterdam public transport service GVB. She published over 40 scientific papers on the above topics within the leading international conferences and journals.

Jeroen de Man is a Ph.D. student in the Agent Systems Research group at the VU University in Amsterdam. He received his Masters degree in Artificial Intelligence at the same university in July 2009. For his masters thesis on modelling social compliant behavior, he carried out an internship at the Dutch national research organisation TNO in Soesterberg. As of September 2011, he is associated with a collaborative project between the VU University's Faculty of Sciences (department of Computer Science) and the Netherlands Institute for the Study of Crime and Law enforcement (NSCR). As a

Ph.D. student he works on a project named STRESS (Simulation-based Training of Resilience in Emergencies and Stressful Situations). In cooperation with the Dutch Police Academy and the Amsterdam public transport service GVB, the project focuses on developing training simulations for professionals who are required to make difficult decisions in situations of high stress and time pressure. Within this project and beyond, his interests lie mostly in Serious Gaming and Affective Computing, ranging from the purely technical side to the underlying physiological and psychological theories.

Jan Treur has a full professorship in Artificial Intelligence at VU University Amsterdam since 1990. He is heading the Artificial Intelligence section consisting of about 45 researchers, and leads the Agent Systems Research Group as one of the three groups. He is an internationally well-recognized expert in agent-oriented, cognitive and social modelling. He is/has been member of the programme committee or board of many of the main conferences, workshops and journals in these areas. His extensive list of publications covers major scientific publication media, including the top level conferences and journals. His group is/was taking part in the EU-funded 7th Framework projects SOCIONICAL studying the role of personal ambient intelligent devices in emergent social processes in emergency situations, and ICT4DEPRESSION focusing on ambient support for persons suffering from depression. Moreover, his work includes participation in projects on resilience, safety in aviation, funded by EUROCONTROL and SESAR. Some other recent involvements are in initiating and organising the series of international workshops on Human Aspects in Ambient Intelligence (HAI) at the European Conferences on Ambient Intelligence, and at the International Conferences on Intelligent Agent Technology. Moreover, he initiated and designed a strongly multidisciplinary Bachelor and Master study program at VU University in Lifestyle Informatics and Human Ambience, combining subjects from Ambient and Artificial Intelligence, Biomedical Sciences, Social Sciences, Computer Science, and Psychology.