



# A further example of Christ with gynecomastia

J. Hanoune<sup>1</sup>

Received: 23 February 2022 / Accepted: 25 February 2022 / Published online: 12 March 2022  
© The Author(s), under exclusive licence to Italian Society of Endocrinology (SIE) 2022

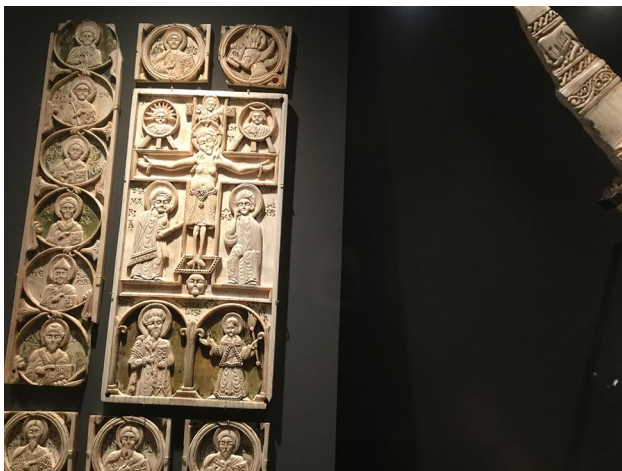
**Keywords** Iconography of Christ · Gynecomastia · Ivory · XIth century

A recent paper by H. Valdes-Socin and M. Vuidar [1] has reported an instance of a painting of Christ with female characteristics, such as breasts and feminine curves, suggesting a spiritual androgyny. This painting, “a Lamentation around the remains of Christ” dating from the sixteen century, can be found in the Museum of the Hotel Dieu in Lessines (Belgium).

I describe here an earlier such iconography (Fig. 1). It is the front cover of a codex from the thirteenth century, probably of Italian origin, made of ivory and displayed in the Cluny Museum in Paris. It represents a basic crucifixion scene and is analogous to many such items well described

by Danielle Gaborit-Chopin [2]. The disposition of the figures is the same: Christ in the middle, surrounded by Jacob and Luke, the sun and the moon, Maria and Joseph, Saint Vitalis and Saint Valeria, Saint Pantaleon, Gregorius and a few others.

Strikingly, the figure of Christ has very long hair and very feminine breasts. Like all the other figures, he also has a pointed beard. Although it is impossible to relate it to the content of the book, it is clear that it refers to the importance of the spiritual meaning of a suffering Christ, caring for everyone.



**Fig. 1** Front cover of a codex, (20 cm×25 cm), made of ivory and dating probably from the late eleventh century. Possible venetian origin. Musée de Cluny, Paris

## Declarations

**Conflict of interest** The author states that there is no such conflict.

**Ethical approval** This article does not deal with human participants and/or animals.

**Informed consent** None is required.

## References

1. Valdes-Socin H, Vuidar M (2021) The androgyny of Christ. *J Endocrinol Invest* 44:1125
2. Danielle G-C (1978) *Ivoires du Moyen-Âge*. Office du livre, Fribourg

**Publisher's Note** Springer Nature remains neutral with regard to jurisdictional claims in published maps and institutional affiliations.

✉ J. Hanoune  
jacques.hanoune@gmail.com

<sup>1</sup> Directeur de recherche émérite à l'Inserm, Paris, France