

Erratum to: Histochemical changes of occlusal surface enamel of permanent teeth, where dental caries is questionable vs sound enamel surfaces

M. Michalaki¹ · C. J. Oulis¹ · N. Pandis^{2,3} · G. Eliades⁴

Published online: 10 January 2017
© European Academy of Paediatric Dentistry 2016

Erratum to: Eur Arch Paediatr Dent (2016)
17:445–454
DOI 10.1007/s40368-016-0252-x

Owing to oversights during the production process, this article appeared with low-resolution versions of the figures. The authors and the publishers apologize for the inconvenience to readers and are pleased to provide the high-resolution figures here.

The online version of the original article can be found under doi:[10.1007/s40368-016-0252-x](https://doi.org/10.1007/s40368-016-0252-x).

✉ M. Michalaki
mmichal@dent.uoa.gr; mgmichalaki@yahoo.gr

- ¹ Department of Paediatric Dentistry, School of Dentistry, University of Athens, 2 Thivon Str., Goudi, 115 27 Athens, Greece
- ² Department of Orthodontics and Dentofacial Orthopedics, School of Dental Medicine/Medical Faculty, University of Bern, Bern, Switzerland
- ³ Corfu, Greece
- ⁴ Department of Biomaterials, School of Dentistry, University of Athens, 2 ThivonStr, Goudi, 115 27 Athens, Greece

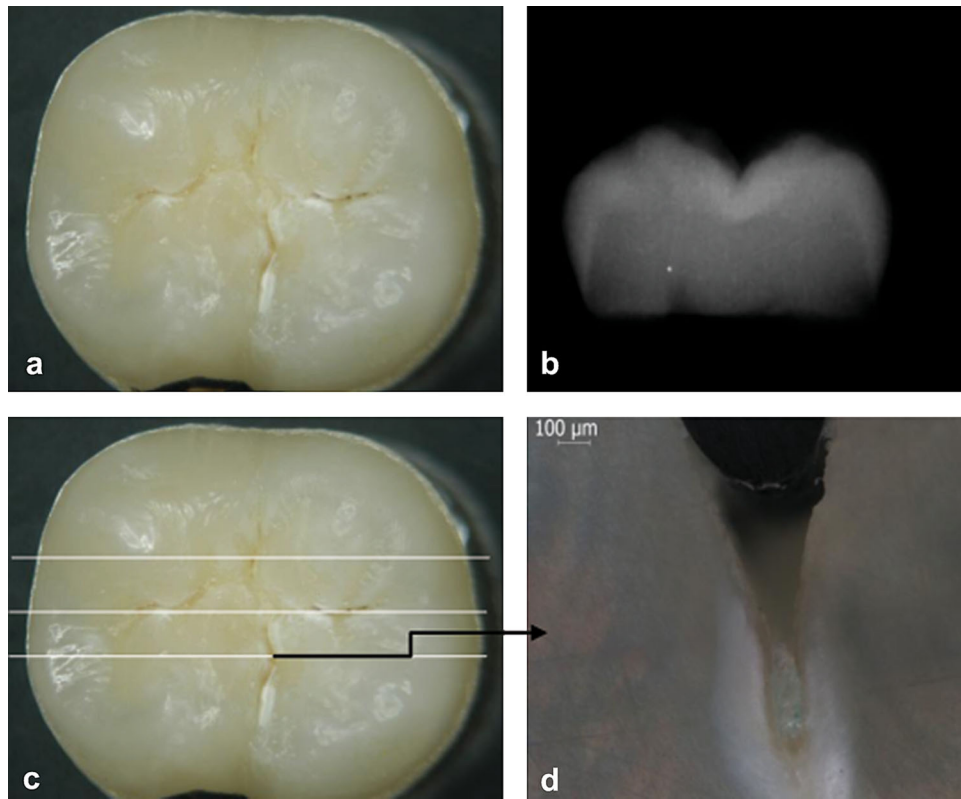


Fig. 1 Questionable surface with ICADS II code 1: **a** stereomicroscopic image of the occlusal surface, **b** radiograph of the crown, **c** sectioning directions, and **d** section image by reflected polarised light microscopy

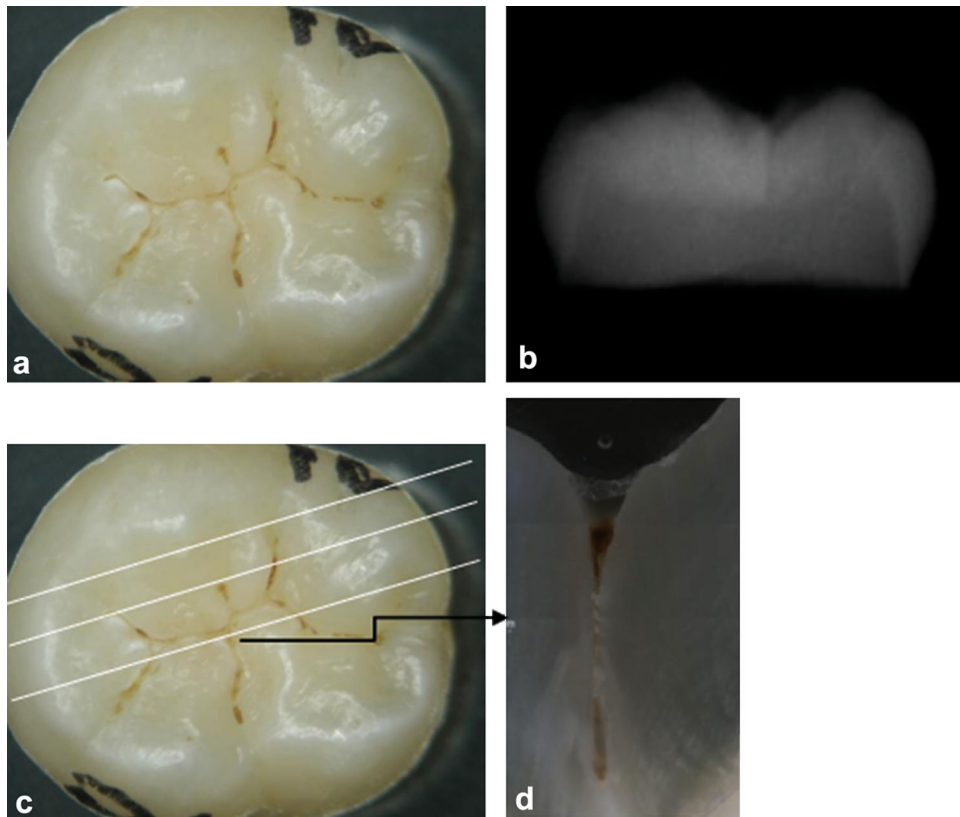


Fig. 2 Questionable surface with ICADS II code 2: **a** stereomicroscopic image of the occlusal surface, **b** radiograph of the crown, **c** sectioning directions, and **d** section image by reflected polarised light microscopy

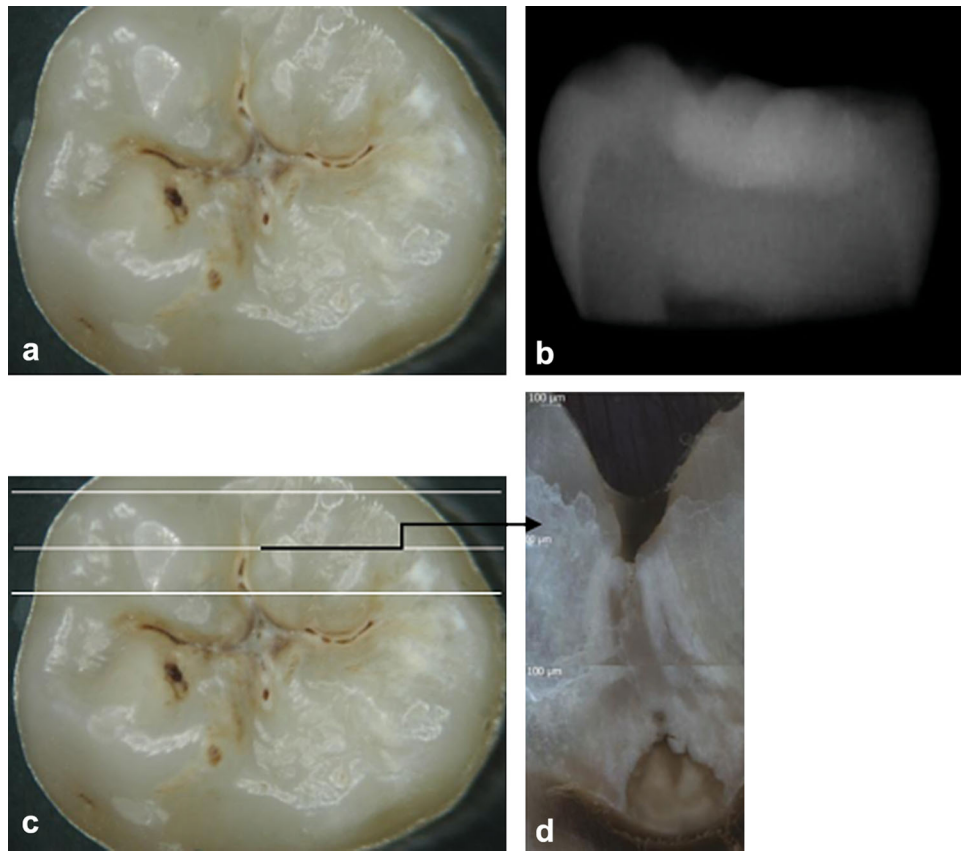


Fig. 3 Questionable surface with ICADS II code 3: **a** stereomicroscopic image of the occlusal surface, **b** radiograph of the crown, **c** sectioning directions, and **d** section image by reflected polarised light microscopy