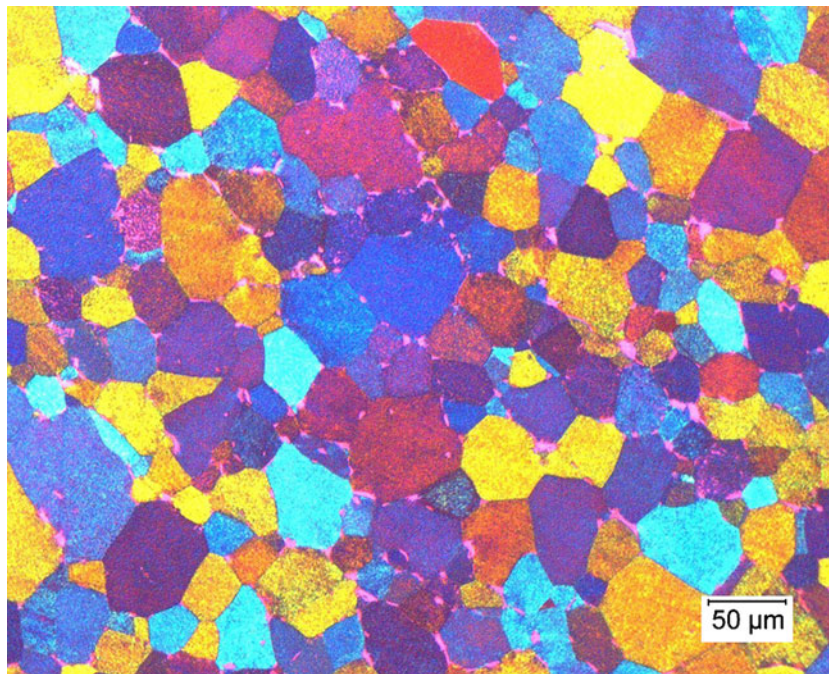


Can You Identify the Microstructure?

© Springer Science+Business Media New York and ASM International 2013



Describe the microstructure accurately and win an invitation to submit your own ‘Mystery Micrograph.’

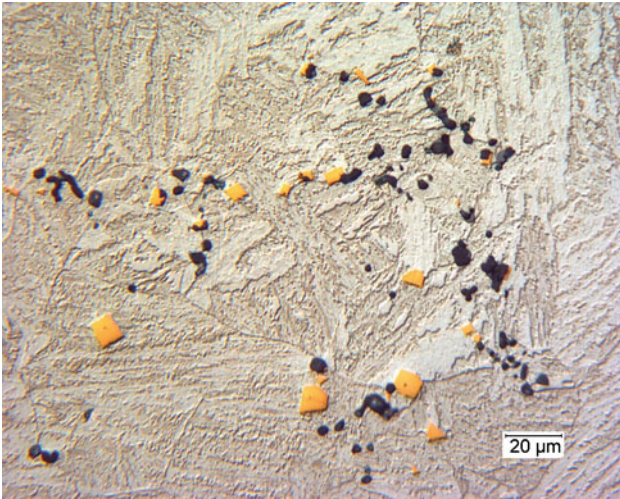
1. Can you identify the material?
2. What phases are present?

The micrograph was taken under polarized light.
Winner and answer will appear in an upcoming issue.

Exceptional micrographs from winner submittals may be used on the journal cover.

Send your clear, brief description by e-mail to the MMA editor at ryan.deacon@asminternational.org. Entries should be titled: “MMA Mystery Micro 2(2).”

Above micrograph submitted by Derek Barnes, Metallographic Technician, Product Evaluation Systems, Inc., Latrobe, Pa.

Answer for Volume 1, Issue 6 Mystery Micrograph

The matrix is steel, but can you name the black and gold second phases? The second phases in the steel matrix are yellow cubic TiN particles and purple/black particles of alumina mixed with MnS.