



## Correction: Targeting ARHGEF12 promotes neuroblastoma differentiation, MYCN degradation, and reduces tumorigenicity

Yi Yang<sup>1</sup> · Siqi Wang<sup>2</sup> · Jiaoyang Cai<sup>2</sup> · Jianwei Liang<sup>2</sup> · Yingwen Zhang<sup>1</sup> · Yangyang Xie<sup>2</sup> · Fei Luo<sup>3</sup> · Jingyan Tang<sup>2</sup> · Yijin Gao<sup>2</sup> · Shuhong Shen<sup>2</sup> · Haizhong Feng<sup>3</sup> · Yanxin Li<sup>1</sup> 

Published online: 16 October 2023  
© Springer Nature Switzerland AG 2023

**Cellular Oncology (2022) 46:133–143**  
<https://doi.org/10.1007/s13402-022-00739-9>

In Fig. 5f of this article the representative MYCN IHC images of tumor from vehicle-treated mice presented the wrong samples.

The correct Figure 5f is shown below. The authors declare that this correction does not affect the description, interpretation, or the original conclusions of the manuscript. The authors regret the inconvenience this error may have caused.

The original article has been corrected.

---

Yi Yang, Siqi Wang, Jiaoyang Cai, and Jianwei Liang contributed equally to this work.

---

The online version of the original article can be found at <https://doi.org/10.1007/s13402-022-00739-9>

---

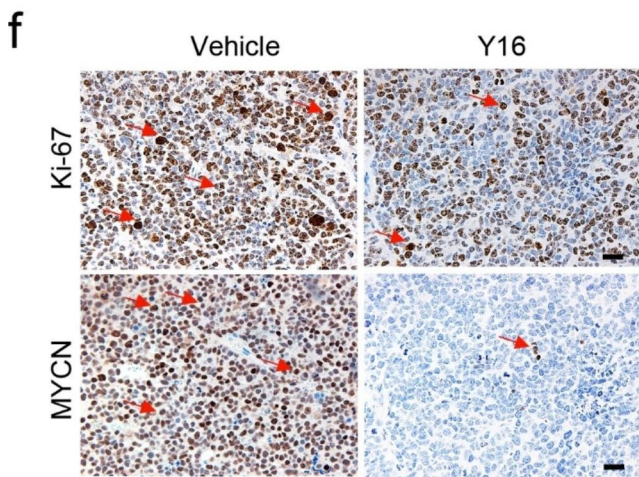
✉ Yijin Gao  
gaoyijin@scmc.com.cn

✉ Shuhong Shen  
shenshuhong@scmc.com.cn

✉ Haizhong Feng  
fenghaizhong@sjtu.edu.cn

✉ Yanxin Li  
liyanxin@scmc.com.cn

- <sup>1</sup> Pediatric Translational Medicine Institute, Department of Hematology & Oncology, Shanghai Children's Medical Center, Shanghai Jiao Tong University School of Medicine, National Health Committee Key Laboratory of Pediatric Hematology & Oncology, Shanghai 200127, China
- <sup>2</sup> Department of Hematology & Oncology, Shanghai Children's Medical Center, Shanghai Jiao Tong University School of Medicine, National Health Committee Key Laboratory of Pediatric Hematology & Oncology, Shanghai 200127, China
- <sup>3</sup> State Key Laboratory of Oncogenes and Related Genes, Renji-Med X Clinical Stem Cell Research Center, Ren Ji Hospital, Shanghai Cancer Institute, Shanghai Jiao Tong University School of Medicine, Shanghai 200127, China



**Fig. 5** Targeting ARHGEF12 with the small molecular inhibitor Y16 reduces neuroblastoma tumorigenicity. **(f)** Representative images of MYCN and Ki-67 staining in tumor sections from d. Scale bar, 50  $\mu$ m.

**Publisher's Note** Springer Nature remains neutral with regard to jurisdictional claims in published maps and institutional affiliations.