

Erratum to: Sinkholes' Detection in a Residential Area in the State of Kuwait

Hasan Kamal · Waleed Abdullah

Published online: 21 December 2012
© King Fahd University of Petroleum and Minerals 2012

Erratum to: Arab J Sci Eng
DOI 10.1007/s13369-012-0334-y

The original version of this article unfortunately contains mistakes. In the place of Figs. 9 and 10, Fig. 8b was erroneously duplicated.

The correct figures are shown here.

The online version of the original article can be found under
doi:[10.1007/s13369-012-0334-y](https://doi.org/10.1007/s13369-012-0334-y).

H. Kamal (✉)
Infrastructure Risk and Reliability Program, Kuwait Institute
for Scientific Research, P.O. Box 24885, SAFAT 13109, Kuwait
e-mail: hkamal@kisir.edu.kw; hsnkml@gmail.com

W. Abdullah
Civil Engineering Department, College of Engineering,
Kuwait University, P. O. Box 5969, SAFAT 13109, Kuwait
e-mail: waleed.abdullah@ku.edu.kw

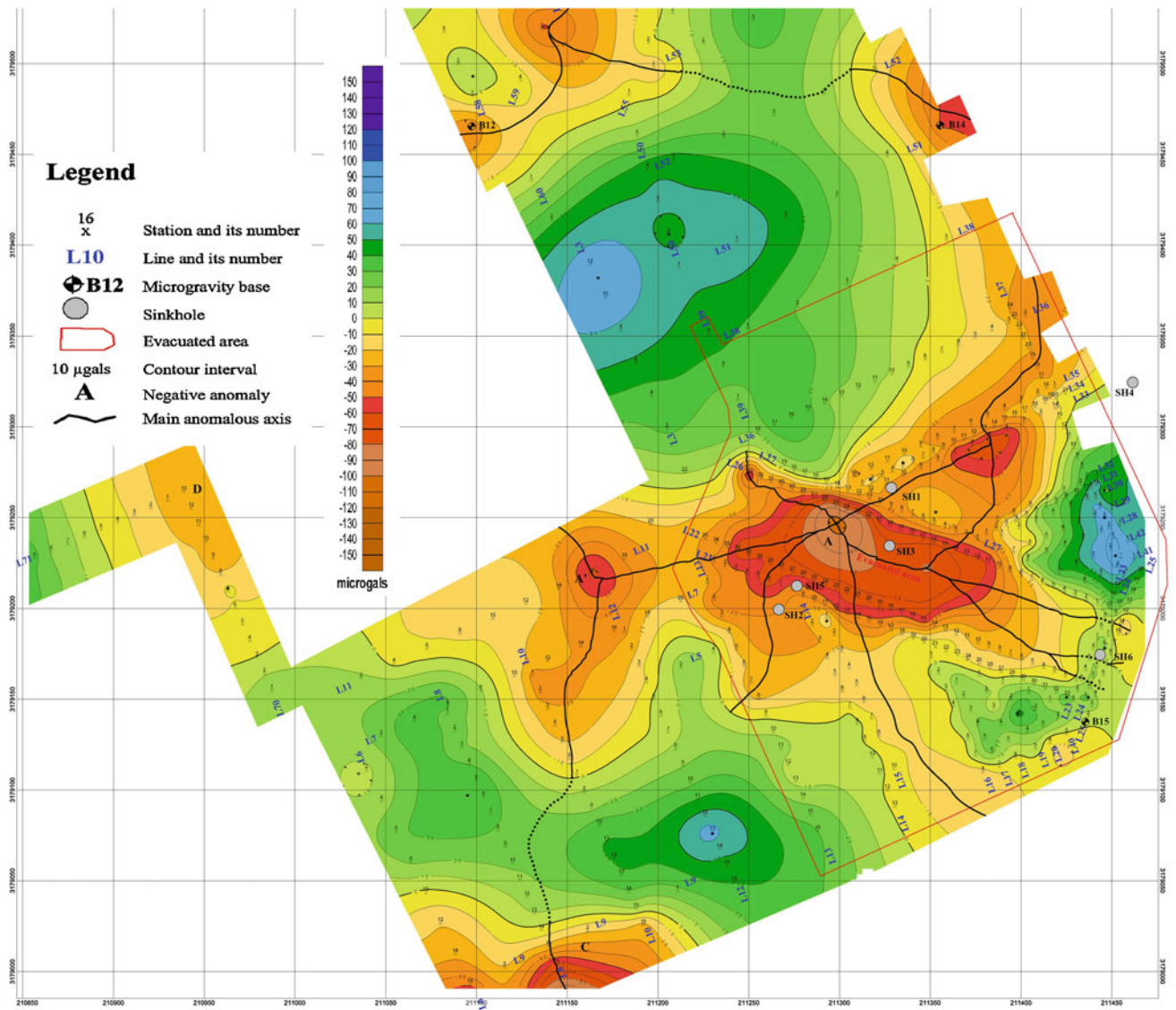


Fig. 9 Residual gravity map showing sector A1 from the 2004 survey

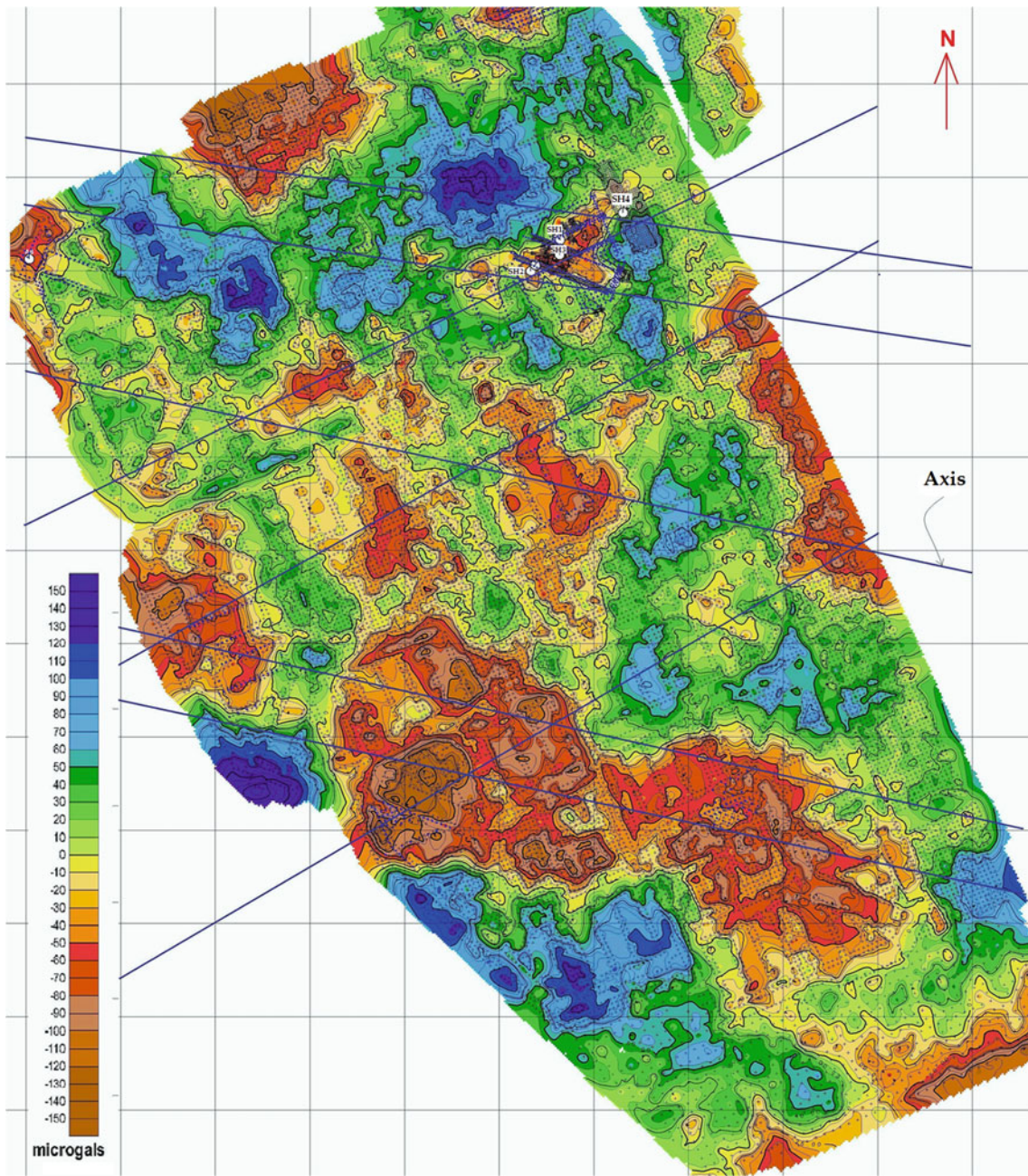


Fig. 10 Microgravity contour maps with delineation of anomalies extension trends