



Correction to: Development of screening techniques to evaluate response of jute (*Corchorus olitorius*) to *Macrophomina phaseolina*

Kunal Mandal¹ · A. Anil Kumar¹ · D. Ghosh¹

Published online: 19 July 2021

© Australasian Plant Pathology Society Inc. 2021

Correction to: Australasian Plant Pathology
<https://doi.org/10.1007/s13313-021-00798-w>

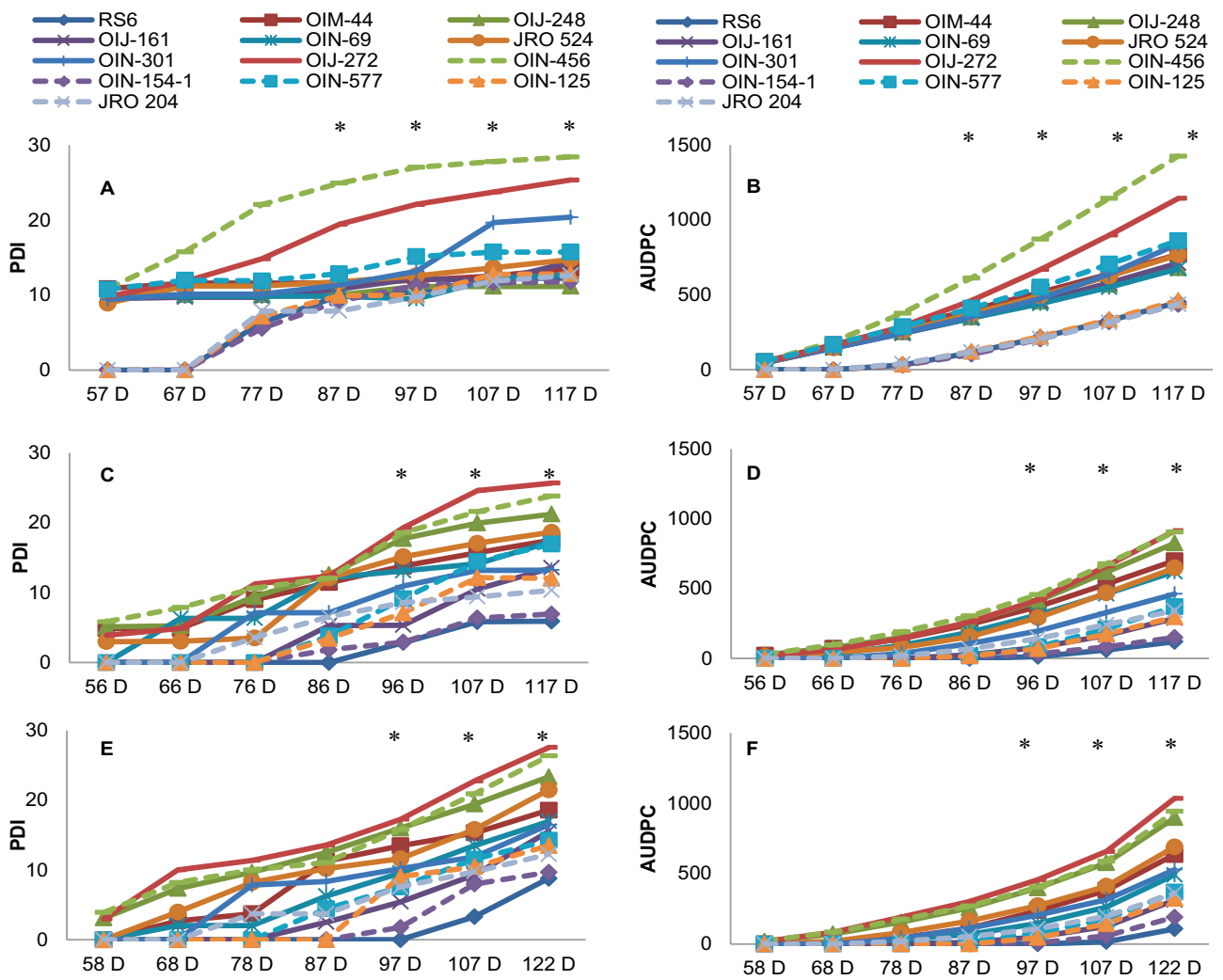
The original version of this article unfortunately contained a mistake.

In this article the legend ‘JRO 204’ for Fig. 6 was inadvertently omitted after ‘OIN-125’; the figure should have appeared as shown below.

The original article can be found online at <https://doi.org/10.1007/s13313-021-00798-w>.

✉ Kunal Mandal
mandal_kunal@yahoo.co.in

¹ ICAR-Central Research Institute for Jute and Allied Fibres,
Barrackpore, West Bengal 700121, India



The original article has been corrected