

A primer to common major gastrointestinal post-surgical anatomy on CT—a pictorial review

Donato Gerardo Terrone · Luigi Lepanto · Jean-Sébastien Billiard · Damien Olivie ·
Jessica Murphy-Lavallée · Franck Vandembroucke · An Tang

Received: 18 April 2011 / Revised: 2 July 2011 / Accepted: 13 July 2011 / Published online: 3 August 2011
© European Society of Radiology 2011

Abstract The post-operative abdomen can be challenging and knowledge of normal post-operative anatomy is important for diagnosing complications. The aim of this pictorial essay is to describe a few selected common, major gastrointestinal surgeries, their clinical indications and depict their normal post-operative computed tomography (CT) appearance. This essay provides some clues to identify the surgeries, which can be helpful especially when surgical history is lacking: recognition of the organ(s) involved, determination of what was resected and familiarity with the type of anastomoses used.

Keywords Gastrointestinal · Anastomosis · Gastric bypass · Pancreas · Surgery · Computed tomography

Introduction

The post-operative abdomen can be challenging. Familiarity with normal post-operative anatomy can be helpful in diagnosing complications. The introduction of mechanical

stapling devices using radio-opaque metallic sutures has greatly facilitated the identification of surgical anastomoses. However, occasionally some or part of anastomoses can be hand-sewn and if no radio-opaque markers are left in place, this is occult on computed tomography (CT), rendering the radiologist's task difficult in identifying an anastomosis. There are three main types of anastomoses [1]. These include: (1) *end to end*—used when there is adequate luminal diameter on both sides; (2) *end to side*—used when there is a size discrepancy between the parts to be joined; (3) *side to side*—

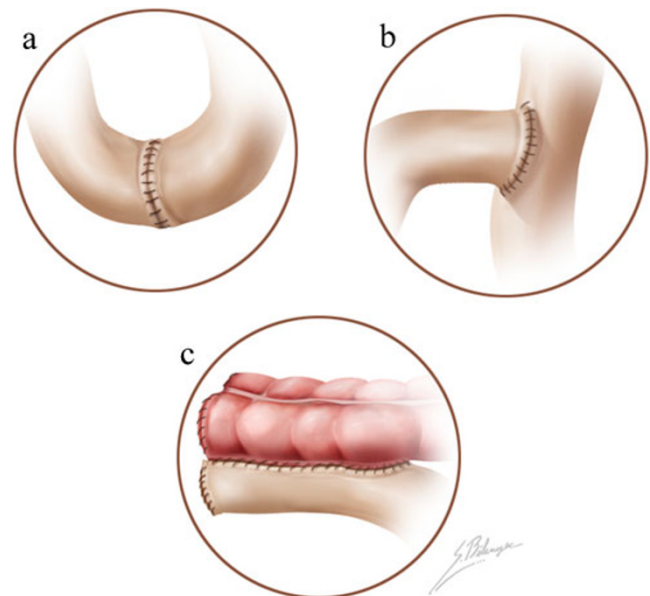


Fig. 1 Anastomotic configurations depicted as enteric hand-sewn anastomoses. **a** End-to-end anastomosis between two segments of small bowel. **b** End-to-side anastomosis between two segments of small bowel. **c** Side-to-side anastomosis between small and large bowel

D. G. Terrone · L. Lepanto · J.-S. Billiard · D. Olivie ·
J. Murphy-Lavallée · A. Tang (✉)
Department of Radiology, University of Montreal and Centre
de Recherche du Centre Hospitalier de l'Université de Montréal
(CRCHUM), Hôpital Saint-Luc,
1058 rue Saint-Denis,
Montréal, QC, Canada H2X 3J4
e-mail: duotango@gmail.com

F. Vandembroucke
Department of Surgery, University of Montreal and CRCHUM,
Hôpital Saint-Luc,
1058 rue Saint-Denis,
Montréal, QC, Canada H2X 3J4

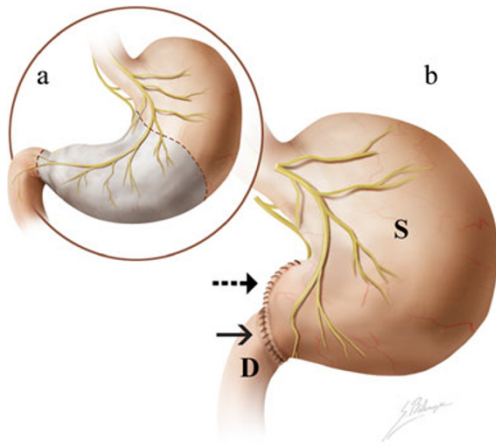


Fig. 2 Illustration of Billroth type I procedure. **a** A partial gastrectomy (antrectomy) (dashed lines) is performed. **b** An end-to-end anastomosis is created between the remnant stomach (S) and duodenum (D), a gastroduodenostomy (arrow). The illustration also depicts the Hofmeister modification (dashed arrow)

used in creation of a large anastomosis in the setting of a narrow lumen (Fig. 1).

A typical staple line has either two or three staggered rows of staples which cannot be individually resolved by CT. In addition there are three basic types of staplers: (1) circular staplers that produce a continuous ring of staples, often for end-to-end or end-to-side anastomoses; (2) linear staplers that produce one staple line, often used to transect a lumen, resulting in a stapled blind end and an open end which is resected; (3) linear staplers that produce a double staple line and include a knife to cut between the lines, used for side-to-side anastomoses, and to transect a lumen but sealing both sides simultaneously. This explains the finding on CT of two long linear staple lines at the site of a gastro-jejunosomy.

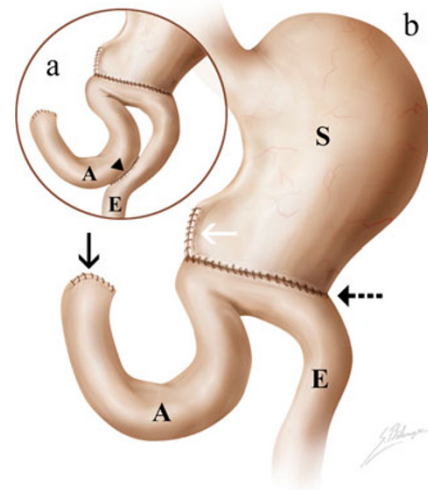


Fig. 4 Illustration of Billroth type 2 procedure. **a** A side-to-side anastomosis between the two jejunal limbs may be created in a Billroth 2 (arrowhead). **b** An anastomosis is created between the remnant stomach (S) and jejunum (J), a gastrojejunosomy (dashed arrow) and the duodenal stump (black arrow) is closed. A afferent limb, E efferent limb, white arrow Hofmeister modification

The standard practice at our institution is to image patients in the early postoperative period only when there is clinical suspicion of postoperative complications. Follow-up imaging is generally performed at 3- to 6-month intervals. At our institution, oral contrast is used on a per patient basis, according to suspicion of anastomotic leak by the clinician. When needed, we administer 750 ml of water-soluble oral contrast agent beginning approximately 1 h prior to imaging, with an additional 250 ml just prior to the start of CT. Additionally, 120 ml of a non-ionic contrast agent is administered intravenously at a rate of 3 ml/s, unless

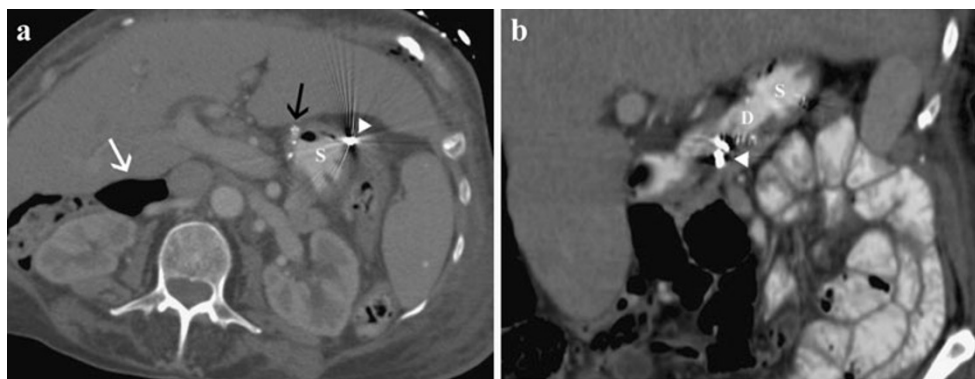


Fig. 3 Billroth type I procedure. **a** Axial CT image with oral contrast in a 74-year-old woman with Billroth I and vagotomy for peptic ulcer disease shows metallic sutures (black arrow) at the end-to-end anastomosis between the remnant stomach (S) and duodenum (gastroduodenostomy). **b** Coronal CT image showing the gastroduodenostomy; duodenum (D)

and stomach (S). Note the staples representing the vagotomy (arrowheads in **a** and **b**) and pneumoperitoneum and pneumoretroperitoneum (white arrow, **a**), (the patient presented with perforated sigmoid diverticulitis, not shown)

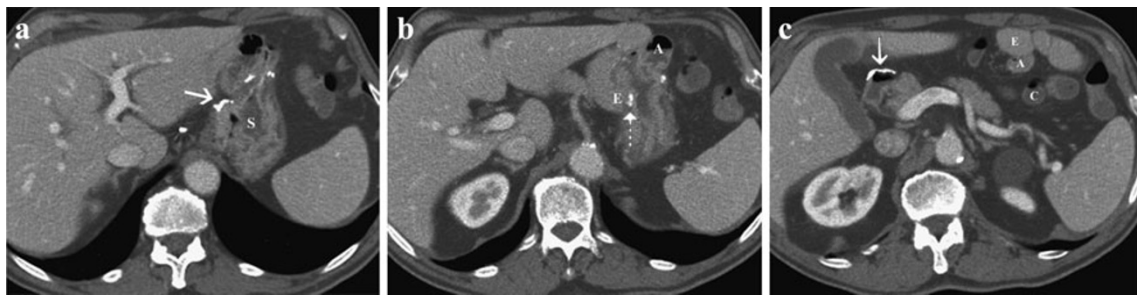


Fig. 5 Billroth type 2 procedure. Axial contrast-enhanced CT images of a 75-year-old man with Billroth II antecolic loop gastrojejunostomy for a gastric ulcer. Images show a remnant stomach (S), and metallic suture material on the lesser curvature side indicating a Hofmeister modification (white arrow, a). The gastrojejunostomy (dashed

arrow, b), and the two jejunal limbs (A afferent limb, E efferent limb) are identified. The blind end of the afferent limb (A) is continuous with the third portion of the duodenum and the efferent limb (E) is brought up to the anastomosis anterior to the transverse colon (C). The duodenal stump (white arrow, c) is also noted

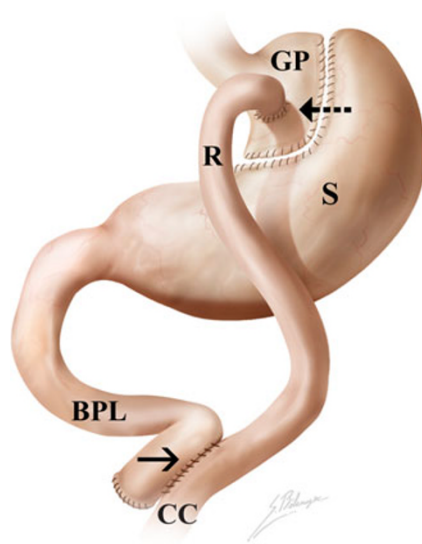


Fig. 6 Illustration of Roux-en-Y gastric bypass (RYGBP) procedure. Gastrojejunostomy (dashed black arrow) between gastric pouch (GP) and the Roux limb (R). In this case, the Roux limb is antegastric. S remnant stomach, BPL bilio-pancreatic limb, black arrow side-to-side jejuno-jejunal anastomosis, CC common channel distal to jejunum-jejunal anastomosis

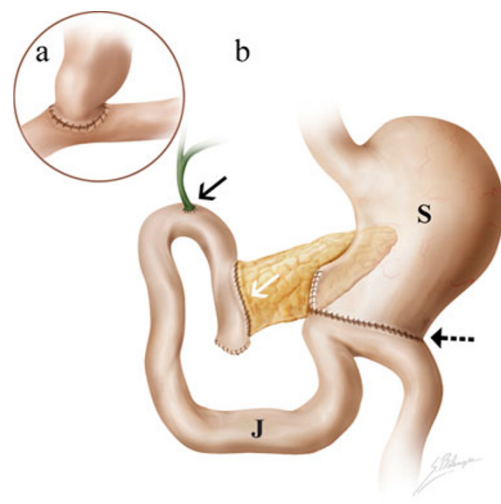


Fig. 8 Illustration of Whipple procedure. Depending on the extent of disease, the Whipple procedure can be modified. a When feasible, a pylorus-preserving procedure is performed, where the duodenum is not resected, creating a duodenojejunojejunostomy rather than the classic gastrojejunostomy (as illustrated in b). b Classic Whipple anatomy with gastrojejunostomy (dashed black arrow), cholecystojejunojejunostomy (black arrow), and an end-to-side pancreaticojejunostomy (white arrow). S stomach, J jejunum



Fig. 7 Roux-en-Y gastric bypass (RYGBP) procedure. Axial contrast-enhanced CT images of a 44-year-old man who underwent a Roux-en-Y gastric bypass for morbid obesity. Images show a gastric pouch (dashed white arrow, a), an end-to-side gastrojejunostomy

(dashed black arrow, a) and the surgically separated remnant stomach (arrowhead, a). The Roux limb (white arrow, b) is in a retrocolic-antegastric position; colon (C, in b). The jejunum-jejunal anastomosis is identified (black arrow, c)

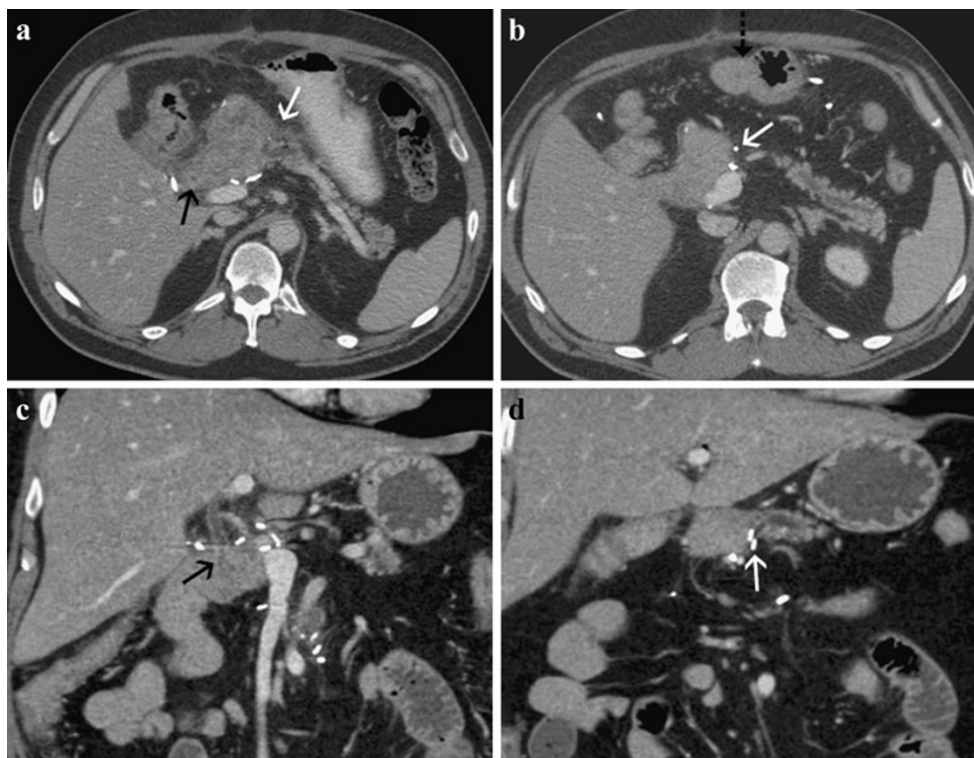


Fig. 9 Whipple procedure. **a** Axial contrast-enhanced CT image 10 days post-operative of a 60-year-old man who underwent a Whipple procedure for a mixed intraductal papillary mucinous tumor (IPMT) shows the distal common bile duct approaching the choledochojejunostomy (*black arrow*) and a mildly thickened pancreaticojejunostomy (*white arrow*) with some mild adjacent fat stranding (normal finding in the early post-operative period). Atrophy

of the residual pancreatic gland. Follow-up CT scan, obtained 1 month later: **(b)** axial CT image depicting the gastrojejunostomy (*black dashed arrow*) and resolution of the pancreaticojejunostomy edema (*white arrow*). Note the dilation of the main pancreatic duct, which was present pre-operatively. **c, d** Coronal reformatted CT images showing the choledochojejunostomy (*black arrow*) and pancreaticojejunostomy (*white arrow*)

contraindicated. Multidetector CT scanning is started 70 s after the contrast agent injection. Parameters include a section thickness of 2.5 mm; pitch 1.25; 120 kVp; auto-milliamperage.

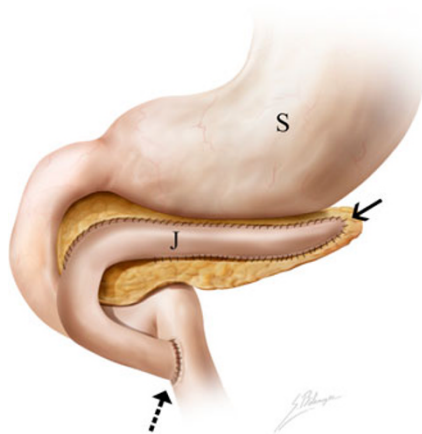


Fig. 10 Illustration of Puestow procedure. A Roux-en-Y loop of jejunum is anastomosed to the pancreas with direct drainage of the pancreatic ducts into the jejunum. *Black arrow* lateral side-to-side pancreaticojejunostomy, *dashed arrow* jejunojunction, *S* stomach, *J* jejunum

Gastric surgeries

Billroth 1 and 2

These surgeries are indicated for gastric malignancy and refractory peptic ulcer disease. Billroth 1 surgery entails a

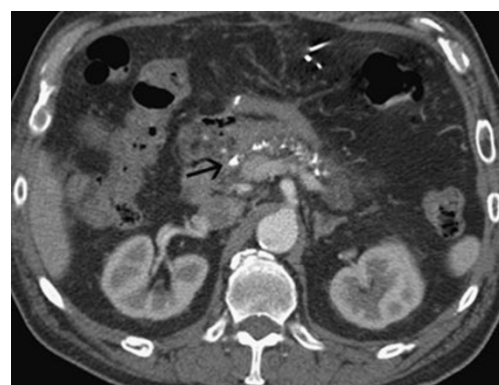


Fig. 11 Puestow procedure. Axial CT image of normal anatomy post-Puestow procedure for chronic pancreatitis of a 60-year-old man showing the Roux-en-Y jejunal loop anastomosed to the anterior aspect of the pancreatic head (*black arrow*). Note the pancreatic calcifications consistent with chronic pancreatitis

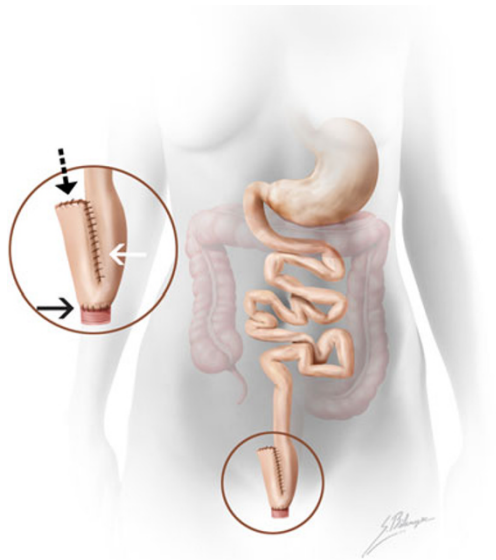


Fig. 12 Illustration of an ileal pouch-anal anastomosis (IPAA). A colectomy and proctectomy is performed. Magnified illustration of a J-pouch configuration with closure of the blind end ileal stump (black dashed arrow), pouch (white arrow) and anastomosis between apical enterotomy and anus (black arrow)

partial gastrectomy (antrectomy) with enteric continuity restored by an end-to-end anastomosis between the remnant stomach and duodenum—a *gastroduodenostomy* [2]. The entire incised end of the stomach may be used for anastomosis (Polya procedure) or only a part of the lumen may be used and the remainder closed (Hofmeister modification) (Figs. 2 and 3). In Billroth 2 surgery, the anastomosis is made between the remnant stomach and the jejunum—a *gastrojejunostomy*—with the duodenal stump closed [2]. Variations may include the type of anastomosis (Polya or Hofmeister modification), the type of gastrojejunostomy (Roux-en-Y or Loop-type) and the placement of anastomotic loop (ante- or retro-colic), depending on the

clinical situation and surgeon's preference. A retrocolic gastrojejunostomy is the preferred method, as it creates a shorter afferent loop, resulting in less postoperative retrostomal herniation and better nutritional status compared with the antecolic gastrojejunostomy (Figs. 4 and 5). A Roux-en-Y anastomosis typically implies a proximal segment of small bowel and a distal segment of small bowel (which is often a blind end) anastomosed together, representing the two upper limbs of the “Y” and the distal small bowel (beyond the anastomosis) representing the lower part of the “Y”.

Bariatric surgery

Bariatric surgeries are a vast subject and may be classified as restrictive, malabsorptive or mixed. Restrictive procedures involve the creation of a small gastric pouch which induces weight loss through satiety. Examples include *adjustable gastric banding* and *vertical-banded gastroplasty*. Malabsorptive procedures bypass portions of the small bowel, limiting the digestive processes and absorption to a short segment of ileum. Examples of malabsorptive surgeries include the *jejuno-ileal bypass*, abandoned because of the severe malnutrition it induces, and *biliopancreatic diversion with or without a duodenal switch*, which has been slow to gain popularity. Mixed procedures are a combination of both [3].

The *Roux-en-Y gastric bypass* (RYGBP) is a common procedure that combines restrictive (small gastric pouch) and malabsorptive properties (Roux limb) [4, 5]. The standard set-up involves four steps: (1) the stomach is divided, thus creating a small gastric pouch and an excluded stomach; (2) the jejunum is divided distal to the ligament of Treitz by creating a bilio-pancreatic limb and a Roux limb; (3) the Roux limb is joined to the bilio-pancreatic limb via a side-to-side jejuno-jejunal anastomosis. Small bowel distal to this anastomosis is

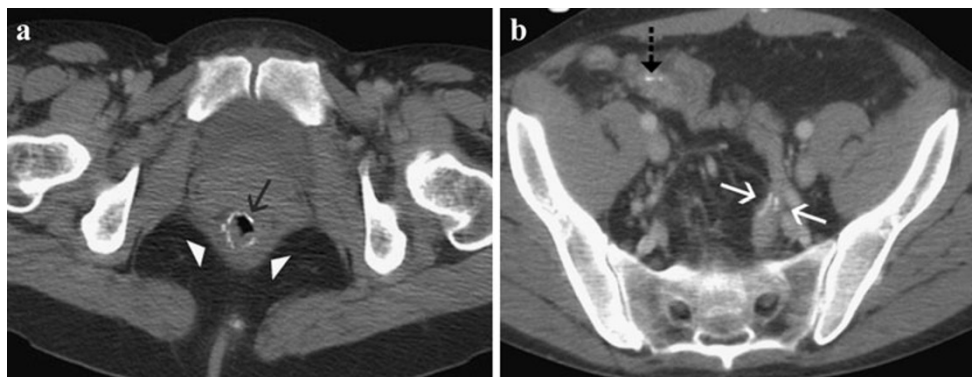


Fig. 13 Ileal pouch-anal anastomosis (IPAA). Axial, contrast-enhanced CT images of a 50-year-old woman with proctocolectomy and ileal pouch-anal anastomosis for ulcerative colitis showing: **a** a circular staple line (black arrow) at the level of the pouch-anal

anastomosis within the sling of levator ani muscles (white arrow-heads); **b** ileal pouch with two rows of parallel suture lines (white arrows) and staple line at blind end of ileum (dashed black arrow) are identified

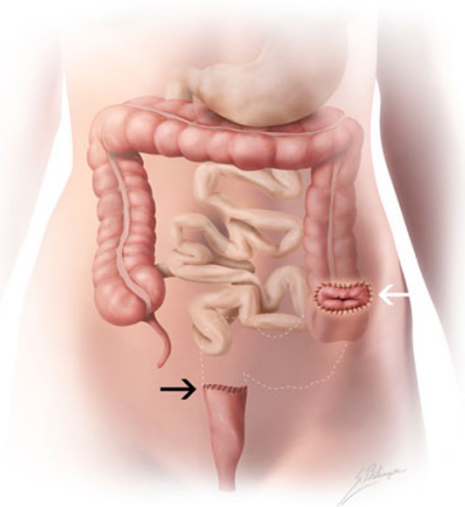


Fig. 14 Illustration of Hartmann procedure. A sigmoidectomy (dashed white lines) is performed on an emergent basis with creation of a temporary diverting colostomy in left iliac fossa (white arrow) and closure of a blind-ending rectal stump (black arrow)

called the “common channel”. (4) The proximal Roux limb is brought up to the gastric pouch to form the gastro-jejunal anastomosis. The position of the Roux limb with regards to the transverse colon is variable: it may be antecolic (superior and anterior to the transverse colon) or retrocolic (tunneling through a surgically created defect in the transverse mesocolon). Its position with regards to the stomach may be antegastric (anterior to excluded stomach) or retrogastric (behind excluded stomach) (Figs. 6 and 7).

Pancreas

Whipple

Indications include the treatment of pancreatic cancer, periampullary neoplasms, symptomatic chronic pancreatitis and pancreatic trauma. Classically, it entails radical resection

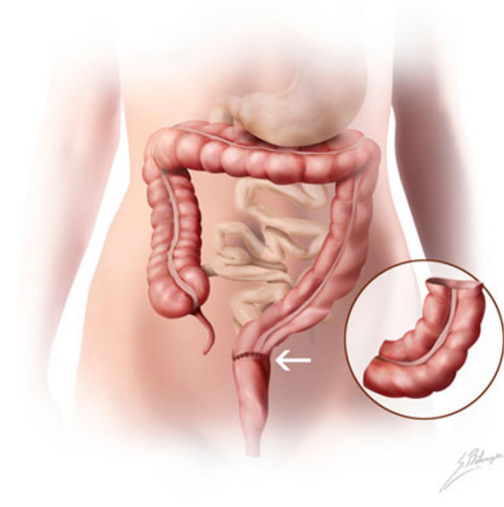


Fig. 16 Illustration of lower anterior resection. Magnified illustration depicts the resected left distal colon and sigmoid colon. A colo-rectal anastomosis (white arrow) is created with preservation of the distal rectum and anus

of the pancreatic head, duodenum and gastric antrum [6–8]. This procedure requires three anastomoses: (1) a gastro-jejunojejunostomy, or when feasible, a pylorus-preserving duodenojejunostomy, (2) a choledochojejunostomy and (3) an end-to-side pancreaticojejunostomy. Normal post-operative findings include: transient fluid collections (resolution within 4–6 weeks after surgery), perivascular cuffing, reactive lymphadenopathy and pneumobilia (Figs. 8 and 9).

Puestow

This procedure is indicated in patients with intractable chronic pancreatitis associated with pancreatic duct dilation beyond 6 mm [9]. The pancreas is filleted, incised longitudinally, exposing the main pancreatic duct from neck to tail with extraction of ductal calculi. A Roux-en-Y loop of jejunum is brought up to create a lateral side-to-side pancreaticojejunostomy with direct drainage of the pancreatic duct into the jejunum (Figs. 10 and 11).

Fig. 15 Hartmann procedure. Axial, contrast-enhanced CT images of a 52-year-old man with cirrhosis with a Hartmann’s procedure for perforated diverticulitis shows surgical staples indicating the colonic stump (black arrow, **a**) and a diverting colostomy in left iliac fossa (white arrow, **b**)

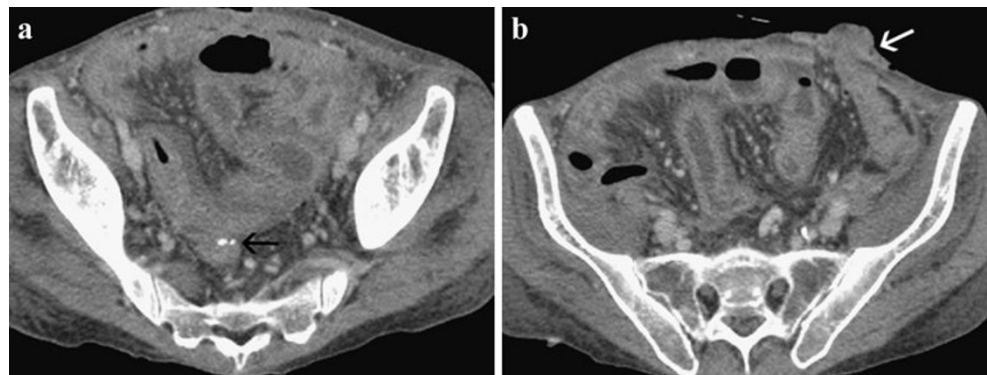


Fig. 17 Lower anterior resection. **a** Axial contrast-enhanced CT images of a 59-year-old man with lower anterior resection for rectal cancer 13 cm from the anal border shows the low colo-rectal anastomosis (*white arrow*). There is preservation of the distal rectum (with rectal tube) in the pre-coccygeal area (**b**). The anus is also spared (not shown)

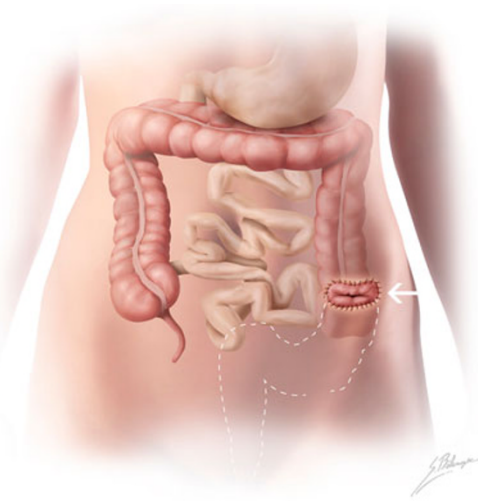
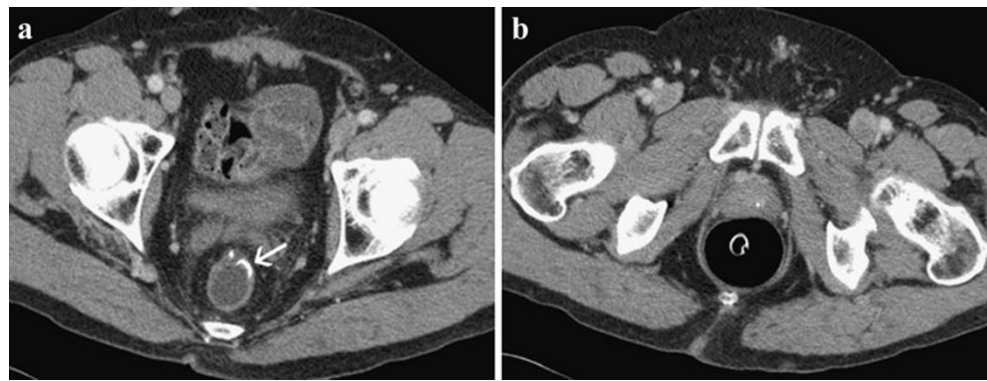


Fig. 18 Illustration of abdomino-perineal resection. Resection of the distal portion of the descending colon, sigmoid, rectum and anus (*dashed white lines*) is performed with creation of a permanent end colostomy (*white arrow*)

Small bowel

Ileal pouch-anal anastomosis

The ileal pouch-anal anastomosis (IPAA) preserves fecal continence in patients who require a proctocolectomy for chronic ulcerative colitis and familial adenomatous polyposis [10, 11]. Multiple configurations exist for the ileal reservoir, with the J pouch being the most common. The surgical steps include: (1) performing a colectomy and proctectomy; (2) stapling the distal end of ileum to form a blind end “stump”; (3) folding the distal ileum on itself and creating an apical enterotomy; (4) creating a side-to-side anastomosis by cutting the ileal walls centrally and connecting the two ileal loops to form a large pouch with two parallel staple lines; (5) creating an anastomosis between the anus and enterotomy with a circular stapling device passed trans-anally; (6) performing a temporary loop ileostomy which is usually reversed 6–12 weeks later. Normal CT findings include: a staple line at the blind end of the distal ileum, parallel staple lines along the ileal pouch and a circular staple line at the ileal pouch-anal anastomosis within the sling of the levator ani muscles (Figs. 12 and 13).

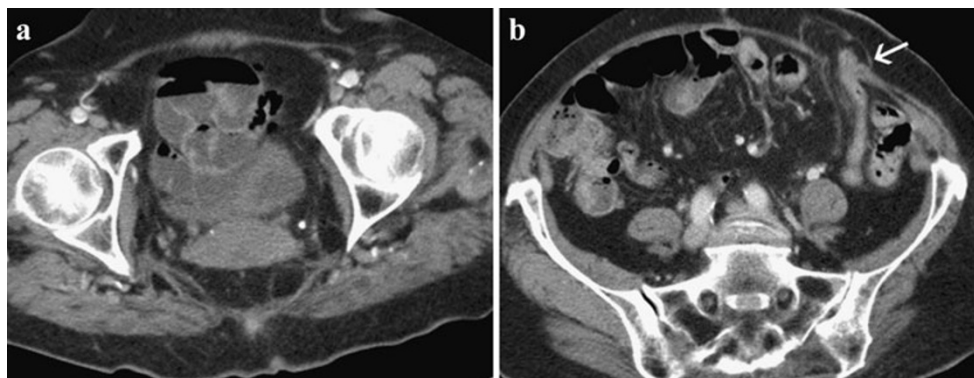


Fig. 19a, b Abdomino-perineal resection. Axial contrast-enhanced CT images of a 78-year-old woman with abdomino-perineal resection for cancer of the lower rectum located 2.5 cm from the anal border.

Note the absence of rectum in the pre-coccygeal space in (**a**). The anus, anal sphincters and levator ani muscles were all resected and patient had a permanent end colostomy in left iliac fossa (*white arrow*)

Colorectal

Hartmann procedure

The Hartmann procedure is indicated in patients with complicated diverticulitis, obstructive or perforated sigmoid cancer or penetrating trauma operated on an emergent basis [12, 13]. It is performed instead of a primary re-anastomosis because of the risk of anastomotic rupture secondary to inadequate bowel preparation and/or complicating peritonitis. After a partial colectomy or sigmoidectomy, it involves the creation of a temporary diverting colostomy and a blind-ending rectal or colonic stump closed by suture (Hartmann's pouch). The colostomy can then be taken down in the second stage of the procedure, 4–6 months later, after the peritoneal inflammation subsides (Figs. 14 and 15).

Lower anterior resection

Lower anterior resection is an anal-sparing procedure indicated for lesions of the recto-sigmoid junction and proximal rectum that are over 5 cm from the anal border [13]. It involves resection of the distal left colon, sigmoid and proximal rectum with a low colo-rectal anastomosis or resection including the entire rectum with a colo-anal anastomosis (Figs. 16 and 17).

Abdomino-perineal resection

This resection is indicated for lesions of the distal rectum, less than 5 cm from the anal border, and involves resection of the distal portion of the descending colon, sigmoid, rectum and entire anus (anus, sphincters, levator ani muscles) with creation of a permanent end colostomy (Figs. 18 and 19) [13].

Conclusion

The post-operative abdomen can be complex and challenging. This pictorial essay describes the appearance of a few selected common gastrointestinal surgeries. Familiarity with

normal post-operative anatomy can aid in the detection of complications.

References

- Nandakumar G, Stein SL, Michelassi F (2009) Anastomoses of the lower intestinal tract. *Nat Rev Gastroenterol Hepatol* 6:709–716
- Kim KW, Choi BI, Han JK (2002) Postoperative anatomic and pathologic findings at CT following gastrectomy. *Radiographics* 22:323–336
- Chandler RC, Srinivas G, Chintapalli KN, Schwesinger WH, Prasad SR (2008) Imaging in bariatric surgery: a guide to postsurgical anatomy and common complications. *AJR Am J Roentgenol* 190:122–135
- Scheirey CD, Scholz FJ, Shah PC, Brams DM, Wong BB, Pedrosa M (2006) Radiology of the laparoscopic Roux-en-Y gastric bypass procedure: conceptualization and precise interpretation of results. *Radiographics* 26:1355–1371
- Yu J, Turner MA, Cho SR (2004) Normal anatomy and complications after gastric bypass surgery: helical CT findings. *Radiology* 231:753–760
- Lepanto L, Gianfelice D, Déry R, Dagenais M, Lapointe R, Roy A (1994) Postoperative changes, complications, and recurrent disease after Whipple's operation: CT features. *AJR Am J Roentgenol* 163:841–846
- Johnson PT, Curry CA, Urban BA, Fishman EK (2002) Spiral CT following the Whipple procedure: distinguishing normal postoperative findings from complications. *J Comput Assist Tomogr* 26:956–961
- Mortelé KJ, Lemmerling M, de Hemptinne B, De Vos M, De Bock G, Kunnen M (2000) Postoperative findings following the Whipple procedure: determination of prevalence and morphologic abdominal CT features. *Eur Radiol* 10:123–128
- Sandrasegaran K, Maglinte DD, Howard TJ, Lappas JC (2005) Surgery for chronic pancreatitis: cross-sectional imaging of postoperative anatomy and complications. *AJR Am J Roentgenol* 184:1118–1127
- Alfisher MM, Scholz FJ, Roberts PL, Counihan T (1997) Radiology of ileal pouch-anal anastomosis: normal findings, examination pitfalls, and complications. *Radiographics* 17:81–98
- Broder JC, Tkacz JN, Anderson SW, Soto JA, Gupta A (2010) Ileal pouch-anal anastomosis surgery: imaging and intervention for post-operative complications. *Radiographics* 30:221–233
- Cherukuri R, Levine MS, Maki DD, Rubesin SE, Laufer I, Rosato EF (1998) Hartmann's pouch: radiographic evaluation of postoperative findings. *AJR Am J Roentgenol* 171:1577–1582
- Scardapane A, Brindicci D, Fracella MR, Angelelli G (2005) Post colon surgery complications: imaging findings. *Eur J Radio* 53:397–409