



A comprehensive phylogeographic study of *Arion vulgaris* Moquin-Tandon, 1855 (Gastropoda: Pulmonata: Arionidae) in Europe

Kamila S. Zając¹ · Bjørn A. Hatteland^{2,3} · Barbara Feldmeyer⁴ · Markus Pfenninger⁴ · Anna Filipiak⁵ · Leslie R. Noble⁶ · Dorota Lachowska-Cierlik⁷

Received: 30 April 2019 / Accepted: 25 September 2019 / Published online: 17 December 2019
© The Author(s) 2019

Abstract

Arion vulgaris Moquin-Tandon, 1855 is regarded as one of the 100 most invasive species in Europe. The native distribution range of this species is uncertain, but for many years, the Iberian Peninsula has been considered as the area of origin. However, recent studies indicate that *A. vulgaris* probably originated from France. We have investigated the genetic structure of 33 European populations (Poland, Norway, Germany, France, Denmark, Switzerland) of this slug, based on two molecular markers, mitochondrial cytochrome c oxidase subunit I (COI, mtDNA) and nuclear zinc finger (ZF, nDNA). Our investigation included published data from two previous studies, giving a total of 95 populations of *A. vulgaris* from 26 countries. This comprehensive dataset shows comparable haplotype diversity in Central, North and Western Europe, and significantly lower haplotype diversity in the East. All haplotypes observed in the East can be found in the other regions, and haplotype diversity is highest in the Central and Western region. Moreover, there is strong isolation by distance in Central and Western Europe, and only very little in the East. Furthermore, the number of unique haplotypes was highest in France. This pattern strongly suggests that *A. vulgaris* has originated from a region spanning from France to Western Germany; hence, the slug is probably alien/invasive in other parts of Europe, where it occurs. Our results indicate the necessity to cover as much of the distribution range of a species as possible before making conclusive assumptions about its origin and alien status.

Keywords Invasive species · Gastropods · mtDNA · nDNA · Pest species · Phylogeography

Electronic supplementary material The online version of this article (<https://doi.org/10.1007/s13127-019-00417-z>) contains supplementary material, which is available to authorized users.

✉ Kamila S. Zając
kamila.zajac12@gmail.com

✉ Dorota Lachowska-Cierlik
dorota.lachowska-cierlik@uj.edu.pl

Bjørn A. Hatteland
Bjorn.Hatteland@nibio.no

Barbara Feldmeyer
barbara.feldmeyer@senckenberg.de

Markus Pfenninger
Pfenninger@bio.uni-frankfurt.de

Leslie R. Noble
leslie.r.noble@nord.no

² Department of Biological Sciences, University of Bergen, Bergen, Norway

³ Biotechnology and Plant Health, Norwegian Institute of Bioeconomy Research (NIBIO), NIBIO Ullensvang, Lofthus, Ullensvang, Norway

⁴ Biodiversity und Climate Research Centre by Senckenberg Naturforschende Gesellschaft, Goethe-Universität, Frankfurt, Germany

⁵ Institute of Plant Protection - National Research Institute, Władysława Węgorka 20, 60-318 Poznań, Poland

⁶ Faculty of Biosciences and Aquaculture, Nord University, 8049 Bodø, Norway

⁷ Institute of Zoology and Biomedical Research, Faculty of Biology, Jagiellonian University, Gronostajowa 9, 30-387 Kraków, Poland

¹ Institute of Environmental Sciences, Faculty of Biology, Jagiellonian University, Gronostajowa 7, 30-387 Kraków, Poland

Introduction

Alien species can have negative effects on natural ecosystems including the displacement of endemic taxa (Sax et al. 2005; Davis 2009; Hatteland et al. 2013), which in turn can adversely affect food security by impacting ecosystem services. Therefore, alien and invasive species may be a threat to global biodiversity because of their impact on biological communities and economic costs (Walther et al. 2009; Kozłowski and Kozłowski 2011). Anthropogenic activity strongly increases the spread and impact of many aliens, especially gastropods and insects, which are easily spread with various trade goods. Among terrestrial invertebrates, *Arion vulgaris* Moquin-Tandon, 1855 (Gastropoda: Pulmonata: Arionidae), also known as the Iberian or Spanish slug, is regarded by DAISIE organization (Delivering Alien Invasive Species Inventories for Europe) as one of the 100 most invasive species in Europe (Rabitsch 2006). It is of huge economic significance because it causes serious damage to agricultural crops and orchard cultivation resulting in financial losses (Frank 1998; Gren et al. 2009; Kozłowski 2010, 2012).

For many years *A. vulgaris* has been regarded as *Arion lusitanicus* (Mabille 1868), thought to have spread from the area of the Iberian Peninsula (Spain, Portugal and Azores) to other countries (Simroth 1891; Quick 1952, 1960; van Regteren Altena 1971; Chevallier 1972). However, Castillejo (1997) showed that *A. lusitanicus* sampled outside Iberia was very different from the *A. lusitanicus* (Mabille 1868) originally described from Portugal based on internal morphology. Phylogenetic studies by Quinteiro et al. (2005) and Hatteland et al. (2015) came to the same conclusion; thus, *A. vulgaris* has been recognized as distinct from *A. lusitanicus* species, as also suggested by Falkner et al. (2002). Due to the morphological similarities and confusing taxonomy of older studies, the name *A. lusitanicus* often refers to the so called pest slug *A. vulgaris* commonly occurring in Europe. Currently, *A. vulgaris* is considered to be common in many European countries, from south to north, and up to now has been reported from France (in 1855), Great Britain (1952), Germany (1970), Slovenia (1970), Italy (1971), Switzerland (1971), Austria (1972), Sweden (1975), Bulgaria (1983), Austria (1984), Norway (1988), Belgium (1989), the Netherlands (1989), Finland (1990), Denmark (1991), Poland (1993), Iceland (2003–2004), Greenland, Latvia, Lithuania, Faroe Islands and Romania (Weidema 2006; Zajac et al. 2017).

A. vulgaris is regarded as an invasive species in most studies, whereas another two species of terrestrial slugs, which have similar external appearance—*A. ater* (L., 1758) and *A. rufus* (L., 1758)—are considered as native to North-Western Europe (Welter-Schultes 2012; Hatteland et al. 2015; Zajac et al. 2017). These three species may co-exist in natural habitats and their differentiation is possible on the

basis of molecular analyses, mating behaviour or genital morphology (Noble 1992; Quinteiro et al. 2005; Barr et al. 2009; Kałuski et al. 2011; Slotsbo et al. 2012; Hatteland et al. 2015). Moreover, in these three species, introgression has been observed and so far two types of hybrids have been discovered *A. ater* × *A. rufus* and *A. vulgaris* × *A. rufus* (Evans 1986; Roth et al. 2012; Dreijers et al. 2013; Hatteland et al. 2015). Introgression seems to be commonest between *A. ater* and *A. rufus*, and also occurs between *A. ater* and *A. vulgaris* (Hatteland et al. 2015).

Recently, two contradictory studies about the origin, migration routes and status (invasive or native) of *A. vulgaris* have been published (Pfenninger et al. 2014; Zemanova et al. 2016). Pfenninger et al. (2014) used two molecular markers, one mitochondrial, cytochrome c oxidase subunit I (COI), and one nuclear, zinc finger (ZF), together with species distribution modelling, to investigate the invasive status of this pest species. Based on these results, Pfenninger et al. (2014) suggested that *A. vulgaris* is probably native to Central Europe, because haplotypes from Spain or western France did not co-occur with those from Central Europe. On the other hand, a lack of data prevented testing for Eastern Europe as a place of origin for *A. vulgaris*.

Zemanova et al. (2016) focused on *A. vulgaris*' status to verify whether it is invasive or native to Central Europe. Their analyses of mtDNA sequences (COI and ND1 markers) and microsatellites, obtained from European populations across the distribution range of this slug, indicated that classification of *A. vulgaris* as non-invasive would be premature.

The main aim of our study was to make a comprehensive comparison of genetic variability between and within European populations of *A. vulgaris* to shed light of the origin of this species. Moreover, this study aimed to explore and summarize the genetic structure of *A. vulgaris* populations in Europe.

Materials and methods

Material collection

Adult specimens of *Arion* slugs were collected into plastic boxes in 2014 from 42 populations across eight European countries: Norway (13), Poland (12), France (4), Denmark (3), Germany (3), Switzerland (3) and Netherlands (1) (see Table 1, Supplementary Materials for details on sampling localities). Only mature slugs with genital morphology corresponding to the original description of *A. vulgaris* Moquin-Tandon, 1855 and *A. lusitanicus* (Welter-Schultes 2012) were collected (5–15 slugs from each locality). All individuals were sent to the Institute of Environmental Sciences (Jagiellonian University), or the Norwegian Institute of Bioeconomy Research (NIBIO), or University of Bergen, and subsequently

prepared for further morphological and molecular analyses. Remaining soft body parts were stored in 70% ethanol and material was deposited in the Institute of Environmental Sciences (Jagiellonian University, Poland), in the Norwegian Institute of Bioeconomy Research (NIBIO, Norway) or in University of Bergen (Norway).

Species identification

Species identification was based on detailed examination of dissection of the distal genitalia under a stereomicroscope (Olympus SZX10). The main characters which allow *A. vulgaris* to be distinguished from other large arionids are as follows: a small atrium, almost symmetrical, one-partite, bursa copulatrix, a fallopian tube with a short, thin posterior end and a thick, rapidly expanding anterior end, a long oviduct with large, asymmetric ligula inside (Riedel and Wiktor 1974; Wiktor 2004; Hatteland et al. 2015). Slugs after dissection were preserved in 96% ethanol. During dissection, a piece of tissue of each specimen examined was preserved separately in 96% ethanol in -80°C for DNA extraction.

DNA extraction, amplification and sequencing

DNA extraction was performed according to Montero-Pau et al. (2008). The samples extracted following the latter procedure were initiated placing the tissue samples in 0.2-ml tubes with 50 μl of alkaline lysis buffer (pH = 12). Samples were placed at 95°C for 30 min., after which they were kept on ice for 4–5 min. A total of 50 μl of neutralizing solution (pH = 5) was added to each tube and samples vortexed and centrifuged. PCR generated fragments of the cytochrome oxidase subunit I (COI, mtDNA), and of zinc finger (ZF, nDNA) gene using the following primers, LCO1490 (5'-GGTC AACAAATCATAAAGATATTGG-3'), HCO2198 (5'-TAAA CTTCAGGGTGACCAAAAAATCA-3') (Folmer et al. 1994), and ZF forward (5'-TGTTTGGAACTAGAGCCTG A-3'), ZF reverse (5'-TTTGTGCTGTCTGCTTGT-3'), respectively (Pfenninger et al. 2014). These two markers have a considerable mutation rate making them appropriate for intra-specific comparisons, as well as for comparisons between closely related species. PCR of each sample was performed in a 10 μl reaction mixture, consisting of 1 μl of template DNA, 0.2 μl of each primer, 1 μl of $10\times$ buffer, 1 μl of 25 mM MgCl_2 , 6.5 μl of ddH₂O, 0.1 μl of 20 mM dNTP and 0.1 μl of Taq-Polymerase. PCR conditions for COI consisted of 5-min denaturation at 95°C , followed by 30-s denaturation at 95°C , 1 min annealing at 48°C , and 90-s elongation at 72°C for 35 cycles, followed by a final elongation step for 10 min. PCR conditions for ZF consisted of 1-min denaturation at 95°C and then 30-s denaturation at 95°C , 45 s annealing at 52°C and 1-min elongation at 72°C for 38 cycles, followed by a final elongation step for 3 min. A

1- μl sample of PCR product was run on a 1.4% agarose gel for 30 min at 100 V to check DNA quality. PCR products were diluted depending on this quality control and then sequenced in one direction. The sequencing reactions were performed in the BiK-F Laboratory Centre, Frankfurt am Main, Germany, in Molecular Ecology Lab, Institute of Environmental Sciences, Jagiellonian University, Kraków, Poland, and at the Sequencing Facility, University of Bergen, Bergen, Norway. A total of 307 COI sequences and 285 ZF sequences were obtained from tissue samples. Unique haplotype sequences which were not detected in previously published studies of both molecular markers were deposited in GenBank with the following accession numbers: COI: MK598594-607, MK617770, ZF: MK679547-MK679552.

Comparative and phylogenetic analyses

COI sequences of *Arion* species deposited in GenBank were downloaded together with 93 sequences of *A. vulgaris* from Zemanova et al. (2016) and 116 sequences of *Arion* sp. (clustering with the *A. vulgaris* clade) from Pfenninger et al. (2014) (427 in total; Tables 2 and 3 and 4, Supplementary Materials). COI sequences of Pfenninger et al. (2014) and Zemanova et al. (2016) comprise molecular data from 29 localities (7 countries) and 34 localities (25 countries), respectively, a total of 95 populations from 26 countries. The ZF data set comprises our 202 newly obtained sequences as well as 169 sequences from Pfenninger et al. (2014) (371 in total; Tables 1 and 2, Supplementary Materials) from 53 localities (9 countries). Sequences for each marker were aligned in MAFFT version 7 (Katoh et al. 2002; Katoh and Toh 2008), using default settings. All obtained alignments were checked manually against non-conservative alignments in BioEdit 5.0.0. (Hall 1999). Aligned sequences were trimmed, and in case of COI translated into protein sequences in MEGA version 7, to check against pseudogenes (Kumar et al. 2016). Uncorrected pairwise distances were calculated in MEGA version 7 (Kumar et al. 2016).

Phylogenetic trees were constructed based on single COI sequences representing each discovered haplotype within *A. vulgaris*, and published COI sequences of other species from the genus *Arion*; *Arianta arbustorum* (Accession number AF296945) was used as the outgroup (Table 4, Supplementary Materials). In total, 156 sequences were used for construction of the phylogenetic tree. The obtained alignment (482 bp) was divided into three data blocks, constituting three separate codon positions using PartitionFinder version 2.1.1 under the Akaike Information Criterion (AIC) (Lanfear et al. 2016). The best scheme of partitioning and substitution models was chosen for posterior phylogenetic analysis, and the analysis run to test all possible models implemented in the program. As best-fit partitioning scheme, PartitionFinder suggested retaining three predefined partitions separately. The

best fit-models for these partitions were as follows: GTR + I + G for the first codon position, GTR + I + G for the second codon position and TVM + G for the third codon position. Models GTR, GTR + I, GTR + G and GTR + I + G were also tested, because RAxML allows for only a single model of rate heterogeneity (of the GTR family) in partitioned analyses (Stamatakis 2014). The best fit-model for all partitions in this analysis was GTR + I + G.

Maximum-likelihood (ML) topology for COI was constructed using RAxML v8.0.19 (Stamatakis 2014). Strength of support for internal nodes of ML construction was measured using 1000 rapid bootstrap replicates. Bootstrap (BS) support values $\geq 70\%$ on the final tree were regarded as significant statistical support. Bayesian inference (BI) marginal posterior probabilities were calculated using MrBayes v3.2 (Huelsenbeck and Ronquist 2001; Huelsenbeck et al. 2001) with 1 cold and 3 heated Markov chains for 10,000,000 generations, and trees were sampled every 1000th generation. Each simulation was run twice. Convergence of Bayesian analyses was estimated using Tracer v. 1.3 (Rambaut et al. 2014). All trees sampled before the likelihood values stabilized were discarded as burn-in. All final consensus trees were viewed and visualized by FigTree v.1.4.3, available at: <http://tree.bio.ed.ac.uk/software/figtree>.

Median joining haplotype networks of COI (482 bp length of alignment) and ZF (404 bp length of alignment) for *A. vulgaris* were performed in PopART (Bandelt et al. 1999). The haplotype networks were constructed from all haplotype sequences presented in each studied population (see Tables 5 and 6, Supplementary Materials for population list). Haplotypes are identified by numbers; circles without a number indicate a hypothetical intermediate haplotype necessary to link observed haplotypes. Hatch marks in the network represent single mutations. In order to estimate the population genetic parameters, number of haplotypes (NH), polymorphic sites (S), nucleotide diversity (π) and haplotype diversity (H) were calculated in DnaSP v.5.10 (Librado and Rozas 2009).

For all localities with sample size larger or equal to two individuals of *A. vulgaris*, haplotype diversity was plotted as bubbles against latitude and longitude for both loci. The larger the bubble, the higher haplotype diversity was observed at a particular locality. After this step, all populations were divided into four regional groups: East, West, Central and North based on their geographical coordinates. A total of 81 (for COI marker) and 54 (for ZF marker) populations of *A. vulgaris* were partitioned into a Western (longitude $< 8^\circ$, latitude $< 58^\circ$), Central (longitude $> 8^\circ$ and $< 12^\circ$, latitude $< 58^\circ$), Northern (comprising all populations in Scandinavia north of the Oresund) (latitude $> 58^\circ$) and an Eastern (longitude $> 8^\circ$ and latitude $< 58^\circ$) groups (Fig. 1; Tables 1, 2 and 3 in Supplementary Materials). Division into regional groups is contextual and refers to the partitioning of sampling areas, not to the geographical division of Europe. Haplotype

diversity was calculated once again for populations grouped in larger parts (West, Central, East, North groups) and visualized as separate figures for COI and ZF markers. For microsatellites, allelic richness was calculated, and for these analyses, data was adopted from the study of Zemanova et al. (2016). Similarly, allelic richness per region was visualized as figure. In order to obtain the statistical significance of the differences between regions, Mann-Whitney *U* test was performed because the data was not normally distributed.

Population differentiation was measured as population pairwise Φ_{ST} values, estimated in ARLEQUIN v. 3.5.1.2 (Excoffier and Lischer 2010). To account for the effect of geography on population differentiation (isolation-by-distance), we regressed the population pairwise Φ_{ST} s against the pairwise geographical distances. All statistical analyses were performed with the software package PAST v. 3 (Hammer et al. 2001).

Results

Species identification

Identification of collected *Arion* species was done on the basis of morphology of the reproductive system together with molecular confirmation (sequences of cytochrome c oxidase subunit I (COI)). We investigated 39 European populations, 33 of them belong to *A. vulgaris* (Norway—11, Poland—9, Germany—3, France—4, Denmark—3, Switzerland—3). Additionally, we have detected three populations of *A. rufus* (Poland: Wronki, Nakielno, Zbąszyń) and three populations of hybrids: two of them were *A. ater* \times *A. rufus* (Norway) and one *A. vulgaris* \times *A. rufus* (Norway) (Table 1, Supplementary Materials). Populations of *A. rufus* and hybrids have been excluded from further analyses due to insufficient sampling size.

Population genetic structure

There was relatively high differentiation between 24 unique COI haplotypes from newly obtained sequences. Together with data from the studies of Pfenninger et al. (2014) (116 sequences) and Zemanova et al. (2016) (93 sequences), 39 distinct haplotypes have been recognized (see Fig. 2 for haplotype network). The 482-bp COI fragment has 46 polymorphic sites (9.54%). Haplotypes 1 and 3 were the most frequent and present in most countries, occurring in 25.26% (24 localities) and 55.79% (53 localities) populations of its total number, respectively (Table 5, Supplementary Materials). Haplotype 1 was found in Central, Northern and Western Europe (Austria, Denmark, Faroe Islands, Germany, Hungary, Netherlands, Norway, Poland), whereas haplotype 3 was found in all countries except Spain. However, haplotype



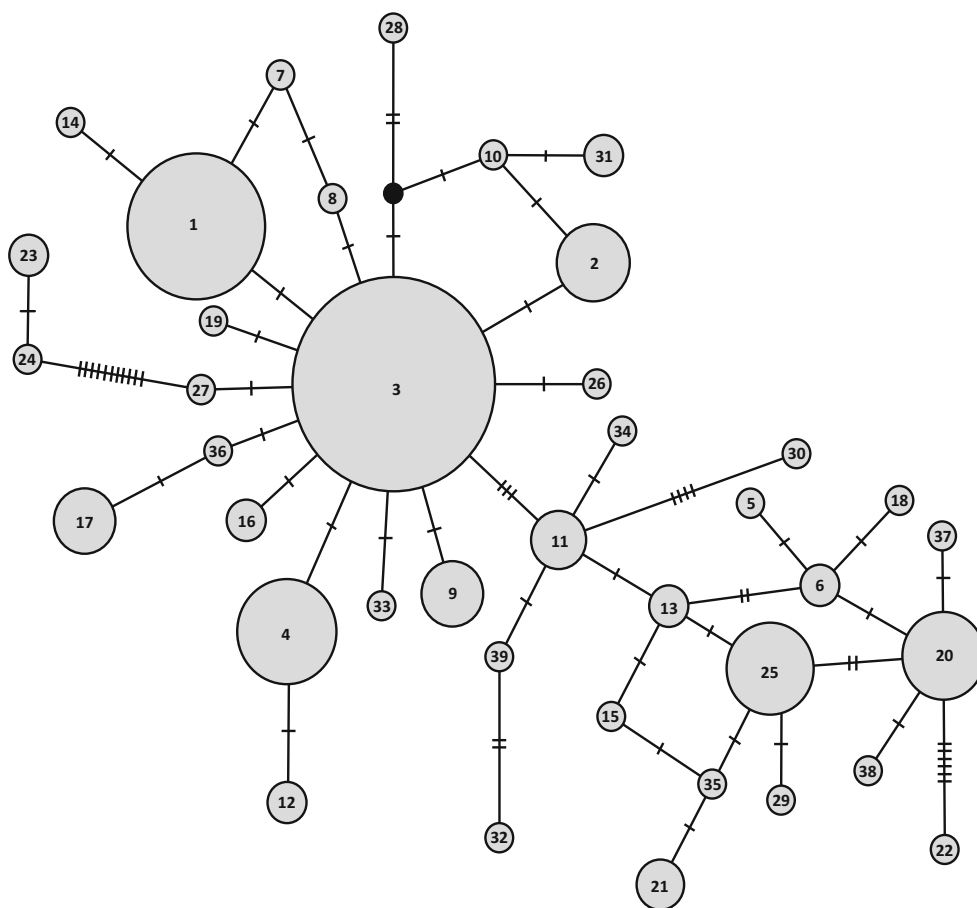
Fig. 1 Division of sampling area of *A. vulgaris* collection into regional groups. Such division is conventional and does not correspond with geographical division of Europe

3 has been found at several localities near the Pyrenees, in close proximity to the border with Spain (Boussenac, Selonnet localities).

A rather high number of haplotypes occurred only in France (haplotypes 10–12, 23–24, 27–29, 34–36) compared with other countries. However, unique haplotypes were also found in Norway (haplotypes 5–8, 18, 19), Poland (haplotypes 13–16), Germany (haplotypes 32, 33), Spain (haplotypes 30, 39), Switzerland (haplotypes 22, 37), Austria (haplotype 38) and Italy (haplotype 26) (Table 5, Supplementary Materials). Interestingly, 73% of all haplotypes found in France were only found in France, while other comprehensively studied countries like Germany, Poland and Norway contained 22%, 38% and 60% unique haplotypes,

respectively. Some populations had high genetic diversity defined by number of haplotypes. In Norway (As—4 haplotypes, Bryne—4, Horten—3), Poland (Igołomia—3, Bolestraszyce—3), Germany (Schlüchtern—3, Heide—3, Munich 2–3, Paderborn—3), France (Metz—4, Boissy-Fressnoy—4; Selonnet—3, Ornans—3, Vercia—3), Switzerland (Vorderwald—4) and Austria (Obertraun—3), three to four haplotypes were discovered (Table 1, Table 5 in Supplementary Materials). The lowest genetic distances between haplotypes within populations occur in Norway (As, Horten) and Germany (Schlüchtern, Heide, Paderborn), ranging from 0.21 to 0.42%. The highest genetic distance between haplotypes within a population was in Switzerland (Vorderwald), where genetic distance ranges from 0.85%

Fig. 2 Haplotype median joining network for the mitochondrial DNA haplotypes of *A. vulgaris*. Haplotypes are represented by circles, the size of which is proportional to the number of populations in which a particular haplotype is present. Populations are listed in Table 5 (Supplementary Materials). Haplotypes are 1 to 39; circles without a number indicate a hypothetical intermediate haplotype linking observed haplotypes. Hatch marks in the network represent single mutations



(between haplotypes 20 and 21) to 3.18% (between haplotypes 4 and 22). Additionally, high genetic distances between haplotypes within populations were found in France: Metz (range from 0.21 to 1.06%), Boissy-Fressnoy (0.84–1.69%), Selonnet (0.42–1.69%), Ormans (0.64–1.27%), Vercia (0.21–1.49%), Poland: Igołomia (0.21–1.49%), Bolestraszyce (0.42–1.49%), Norway: Bryne (0.21–1.69%), Germany: Munich 2 (0.21–1.91%) and Austria: Obertraun (0.21–1.91%). The genetic pairwise distance between all analysed COI haplotypes ranges from 0.21 to 4.9% (1.5% on average). The highest differences (4.88%) were found between haplotype 22 and haplotype 23 (both from Le Barthe-de-Neste locality, France, separated from each other by five kilometres), which are separated by 24 mutational steps (Fig. 2). The other population genetic parameters for *A. vulgaris* populations were $\pi = 0.00806$, $H = 0.865$.

The second molecular marker used in this study was ZF, the 404-bp fragment has 25 polymorphic sites (6.19%). We have analysed 220 of our original sequences of *A. vulgaris* together with 154 sequences deposited in GenBank as *Arion* sp. from Pfenninger et al. (2014). Some individuals identified as *A. vulgaris* based on mtDNA and genital morphology had nDNA typical for *A. rufus* (Bodø and Neauphle-le-Vieux populations), possibly indicating introgression. These latter

sequences have been removed from the analyses. A total of 24 distinct haplotypes were identified (Fig. 3). Haplotype 1 was the most common, being present in 44 of 54 localities, representing all countries except Slovenia (Table 6,

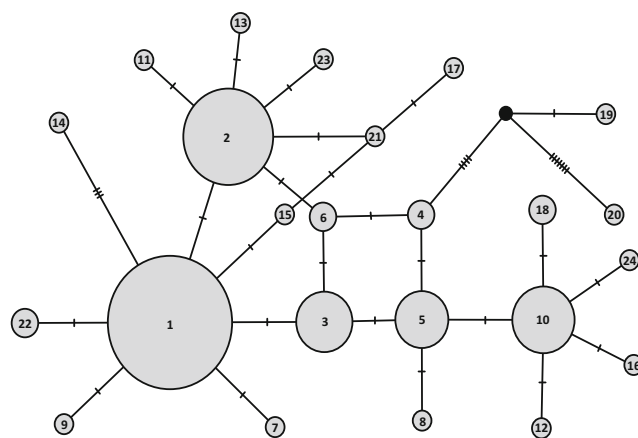


Fig. 3 Haplotype median joining network of the nuclear DNA haplotypes of *A. vulgaris*. Haplotypes are represented by circles, the size of which is proportional to the number of populations in which a particular haplotype is present. Populations are listed in Table 6 (Supplementary Materials). Haplotypes are 1 to 24; circles without a number indicate a hypothetical intermediate haplotype linking observed haplotypes. Hatch marks in the network represent single mutations

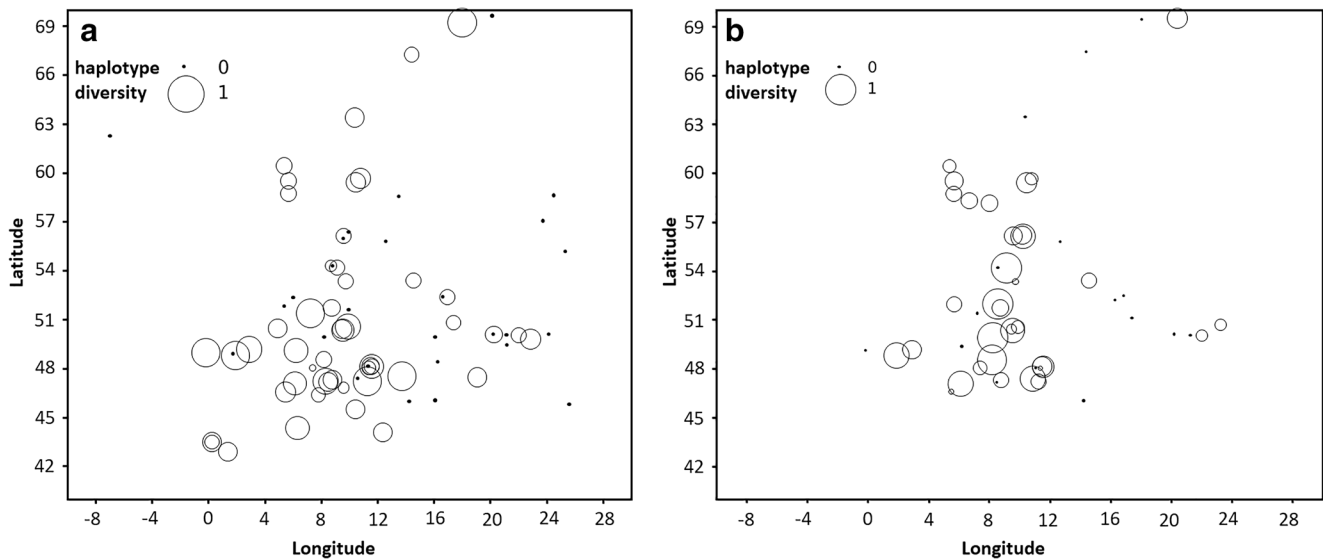


Fig. 4 Haplotype diversity for COI (a) and ZF (b) markers calculated for all localities of *A. vulgaris* with sample size larger or equal to two individuals against latitude and longitude. The larger bubble size, the higher haplotype diversity was observed at a particular locality

Supplementary Materials). The second most common haplotype (haplotype 2, one mutational step away from haplotype 1) was present in 23 populations from seven countries (Austria, Denmark, France, Germany, Norway, Poland and Switzerland). Most haplotypes are separated by only one or two nucleotide substitutions (Fig. 3). Some haplotypes were limited to particular countries, for example, haplotypes 4 and 6 occur only in Denmark, whereas others have been more widely geographically distributed. In total, 15 of 24 haplotypes occurred in a single locality, mainly in Central Europe (France and Germany) (Table 6, Supplementary Materials). The highest genetic diversity, defined by number of haplotypes in a population, was observed in Germany (Ottenhöfen—10 haplotypes, Munich 3–4, Nieder-Olm—4, Munich 2–3, Schlüchtern—3), Denmark (Aarhus, Silkeborg, Lisbjerg—4), France (Colmar—4, Boissy-Fressnoy, Neauphle-le-Vieux, Ornans—3), Austria (Bichlbach—3), and Norway (Horten—3) (Table 1, Table 6 in Supplementary Materials). The highest genetic distance between haplotypes within populations was observed in German localities: Ottenhöfen (range from 0.25 to 2.97%), Munich 3, Nieder-Olm (0.25–1.24%) and French: Ornans (0.25–1.24%). The genetic pairwise distances between all ZF haplotypes ranged from 0.2 to 3.2% (1.1% on average). The other population genetic parameters were $\pi = 0.00502$, $H = 0.808$. The average genetic distance (calculated on the basis of COI sequences available at GenBank) between species of the *Arion* genus is 18.2%.

For all localities with sample size larger or equal to two individuals of *A. vulgaris* against latitude and longitude, haplotype diversity was calculated for COI and ZF markers, separately (Fig. 4). This resulted in a clear spatial pattern of diversity at both loci. There are populations with zero diversity

all over the range (probably due to a pronounced meta-population structure, where new suitable habitat patches are colonised by a low number of individuals), whereas there are many more localities devoid of haplotype diversity in the East part of Europe. However, this pattern is not so visible in the Northern localities.

All studied populations of *A. vulgaris* were partitioned into four, approximately equally strong regional groups (West, Central, East and North) based on their geographical coordinates (Fig. 1). At all markers, there was no notable differences among the Western and the Central groups, while the Eastern group showed definitely the lowest mean values (Table 1, Fig. 5a, b). Statistically significant differences in haplotype diversity per regions were observed between Eastern and Western region ($Z = -2.67228$; $p = 0.007534$) in the case of COI and between Central and Eastern regions ($Z = 3.069854$; $p = 0.002142$) for the ZF marker.

Table 1 Haplotype diversity and allelic richness for *A. vulgaris* populations divided into four regional groups for COI, ZF markers and microsatellites, respectively. Data of allelic richness were adopted from the study of Zemanova et al. (2016)

Marker/region		West	Central	East	North
COI	Mean	0.574	0.440	0.273	0.384
	Median	0.667	0.539	0.000	0.571
	SD	0.361	0.338	0.333	0.384
ZF	Mean	0.376	0.503	0.114	0.396
	Median	0.442	0.530	0.000	0.509
	SD	0.346	0.360	0.197	0.267
Microsatellites	Mean	4.241	4.407	3.659	3.390
	Median	4.190	4.450	3.610	3.045
	SD	0.869	0.700	0.668	0.763

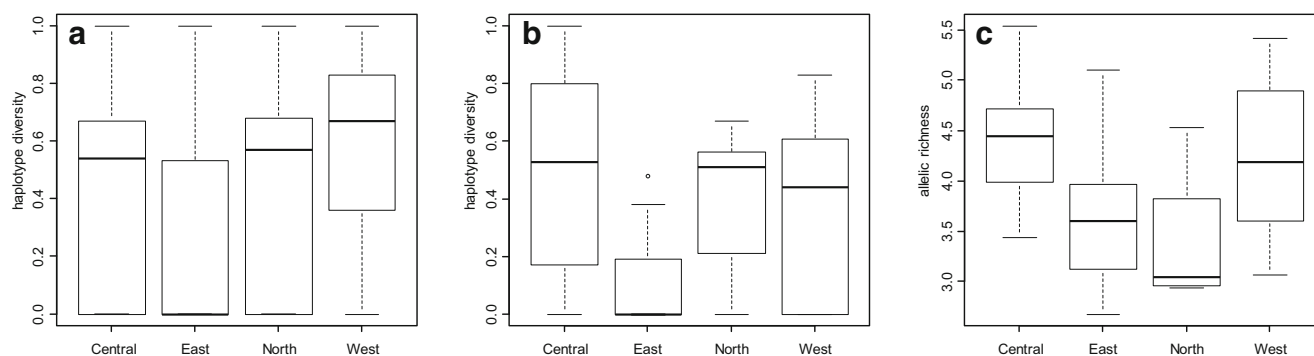


Fig. 5 Haplotype diversity for COI (a) and ZF (b) markers and allelic richness (c) for microsatellites of *A. vulgaris* populations depending on the region. Data was adopted from the study of Zemanova et al. (2016)

This overall pattern is confirmed by microsatellite data from the study of Zemanova et al. (2016). Partitioning populations into the same regions showed that there is no notable difference in allelic richness between Western and Central regions at the microsatellite loci (Fig. 5c). The Northern populations showed the lowest values of allelic richness in comparison with other groups (Fig. 5c, Table 1). All obtained results for allelic richness comparisons between regions were not statistically significant, probably due to insufficient sample size (Table 2).

For COI marker, population differentiation (F_{ST}) is equally strong among the Western ($F_{ST}=0.42265$) and the Central ($F_{ST}=0.38347$) groups, but it is much higher in the East ($F_{ST}=0.50369$) and much lower in the North ($F_{ST}=0.28689$). In the East, this is compatible with a scenario of many, independent anthropogenic introductions from diverse sources.

Looking at the spatial population structure, it is remarkable that the overall relation between population pairwise F_{ST} and the geographic distance is relatively low (Mantel's $r=0.130$). The picture changed, however, when looking at the presumed ancestral regions (West and Central groups, Mantel's $r=0.237$) and the North (Mantel's $r=0.322$) separately. In the East, this relation breaks down (Mantel's $r=0.05$).

The more sophisticated model selection between a discreet and a spatially continuous population model as performed in Pfenninger et al. (2014) was tried, but could not be successfully repeated because of too little information content in the data in conjunction with too many sampling sites and too

many individuals. The Monte-Carlo-Markov Chain did not converge for several important parameters despite runs of more than 50 million generations and several successive prior tuning attempts. It should be noted, however, that the root location parameters did converge in all runs and indicated a root location for the COI marker at 49.11° N and 7.56° E (the Saar region).

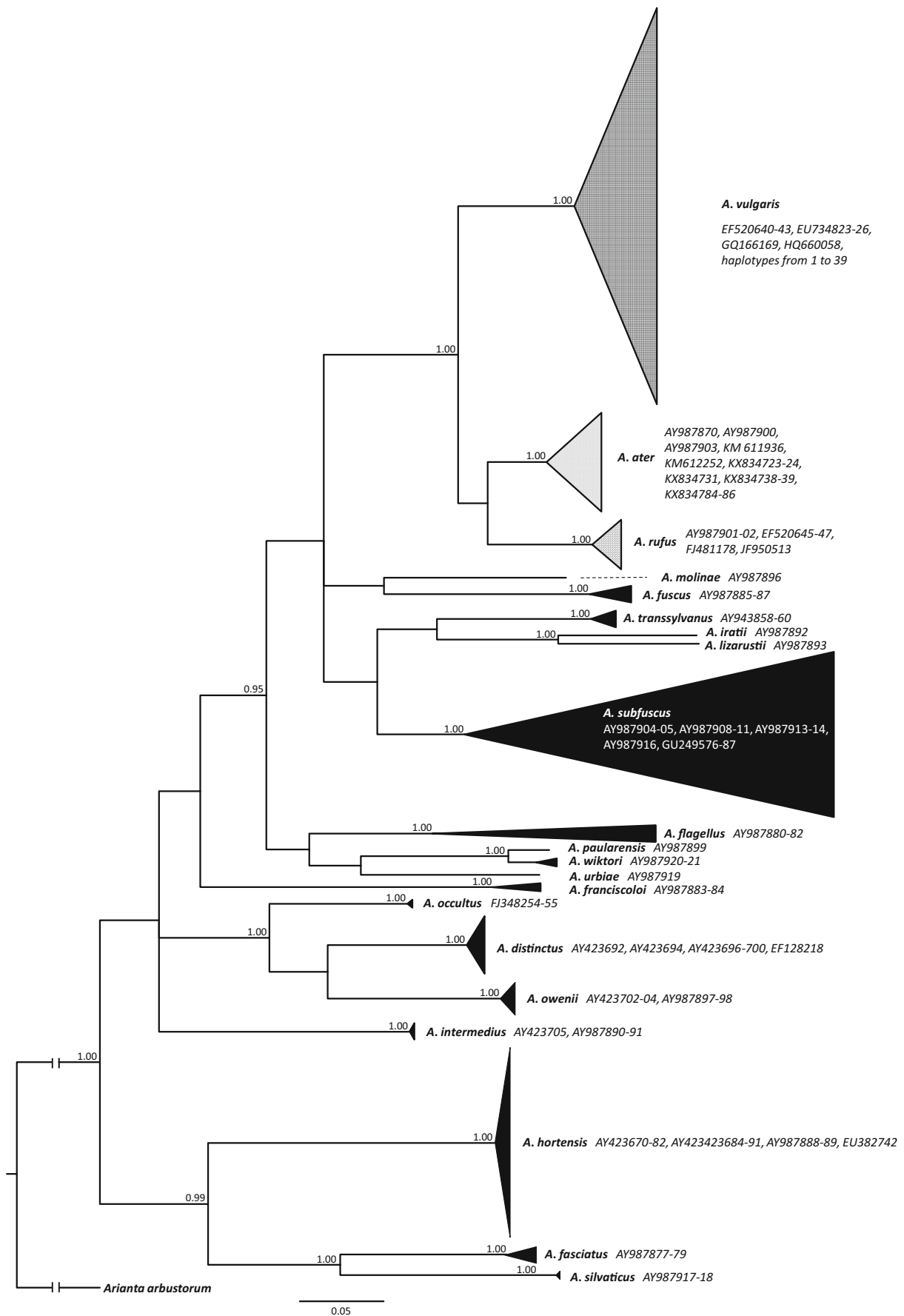
Phylogenetic analyses

Both phylogenetic trees constructed for COI by maximum-likelihood (ML) and Bayesian inference (BI) produced similar topologies. In the case of Bayesian analysis, phylogenetic trees were prepared in two ways: the first presents clades for particular *Arion* species which were collapsed regardless of value of sequence divergence (Fig. 6). The *Arion* species investigated here were represented by 21 strongly supported (1.00 posterior probabilities) clades. All obtained haplotypes for *A. vulgaris* clustered into one clade. This clade clustered together with sequences defined in GenBank as *A. lusitanicus*, which probably are in fact sequences of *A. vulgaris*. Differences in naming are caused by changes in nomenclature proposed by Falkner et al. (2002) of the common pest slug in Europe. The phylogenetic analysis confirm that *A. vulgaris* is the closest relative of *A. rufus* and *A. ater*. Some sequences of *A. rufus* (AY987900, AY987903) clustered with the *A. ater* clade; the same pattern was observed for one *A. ater* sequence (JF950513) which clustered with the *A. rufus* clade. The *A. subfuscus* clade shows the highest intraspecific variability within the *Arion* genus. Additionally, the Bayesian phylogenetic tree has been shown to represent collapsed clades with

Table 2 Pairwise Mann-Whitney U test for allelic richness among the regions. Data of allelic richness were adopted from the study of Zemanova et al. (2016)

Regions	Z	p
Central-East	2.014981	0.043907
Central-West	0.319790	0.749128
Central-North	1.795331	0.072602
East-West	-1.30558	0.191696
East-North	1.008889	0.313029
West-North	1.606349	0.108198

Fig. 6 A COI-based Bayesian phylogenetic tree for *Arion* species constructed from currently available sequences with *Arianta arbustorum* sequence as an outgroup (see also Table 4, Supplementary Materials). Numbers at nodes indicate Bayesian posterior probability, values less than 0.90 are not shown on the tree. Clades for particular *Arion* species were collapsed regardless of the value of sequence divergence. The scale bar represents 0.05 substitutions per nucleotide position. Taxonomic names have been adopted from named GenBank sequences; accession numbers are given next to a particular clade



up to 3% sequence divergence, with the exception of the *A. vulgaris* clade (Fig. 1, Supplementary Materials). For some *Arion* species, more than one clade has been specified (*A. ater*, *A. subfuscus*, *A. flagellus*), with the genetic distance between sequences of these species higher than 3%. In total, 28 clades, strongly supported in most cases (1.00 posterior probabilities), have been distinguished for these *Arion* species. The maximum likelihood phylogenetic tree showed a similar pattern of clade distribution, but was poorly supported by bootstrap values (Fig. 2, Supplementary Materials).

Discussion

Our study comprehensively summarizes the genetic structure and variability within and between European populations of *A. vulgaris*. Our results confirm a possible origin of *A. vulgaris* in Western and Central Europe (i.e. France, Benelux and Western Germany). Moreover, the data suggest that *A. vulgaris*' expansion eastwards may be as a consequence of anthropogenic activity after 1989, when the iron curtain in Europe limiting the transport of goods ceased to exist.

The haplotype distribution of *A. vulgaris* shows clear spatial patterning of diversity at both loci. There are populations with zero diversity all over the range, probably caused by a pronounced meta-population structure, where new suitable habitat patches are colonised by a low number of individuals. Among all COI haplotypes described in our study, haplotype 3 was the most common, being present in 19 out of 26 countries.

Arion vulgaris has been detected from the area of the Iberian Peninsula by Zemanova et al. (2016) but from only three sites located near the border between France and Spain where single individuals were collected. The Iberian Peninsula is unlikely to be the place of the origin of *A. vulgaris* due to the low densities recorded in this area (Pfenninger et al. 2014; Zemanova et al. 2016). In fact, in this area, the endemic *A. lusitanicus* occurred. According to other studies, *A. vulgaris* was observed along the Pyrenees (Quinteiro et al. 2005; Hatteland et al. 2015). Quinteiro et al. (2005) discovered that specimens designated as *A. lusitanicus* clustered into two different clades based on mitochondrial DNA; the first one closely related to *A. ater* and *A. rufus*, and the second to *A. nobrei* and *A. fuliginus*. Slugs from the first clade which seem to be *A. vulgaris* have been collected from Italy (Alpi Carniche, Rivolato), France (Mont. Noire, Central Massif) and Spain (Girona), while *A. lusitanicus* was recorded from Serra da Arrábida in Portugal. These findings suggest that *A. vulgaris* and *A. lusitanicus* are two separate species, both present on the Iberian Peninsula (Quinteiro et al. 2005).

Our analysis revealed the presence of 11 distinct COI haplotypes (45.83% of all haplotypes found in the study) in Polish populations. None of them was unique to Poland, and were also found in other parts of Europe (Table 3). *Arion vulgaris*

was recorded in Poland for the first time in 1993 in Podkarpacie, in areas near Albigowa and Markowa to the east of Rzeszów, but it was probably present previously, in the early 1980s (Kozłowski and Kornobis 1994, 1995). In Poland, the most common haplotypes were 1 and 3, and none of them appeared in Rzeszów, which is located in close proximity to the first area where *A. vulgaris* was observed. Analyses of haplotype distribution in Poland suggest that *A. vulgaris* has been introduced multiple times from different parts of Europe, as also suggested by Soroka et al. (2009) based on mtDNA sequences.

In Norway, *A. vulgaris* was observed for the first time in 1988 in three localities: Langesund (south of Norway), Krakerøy (southeast) and Molde (southwest) (von Proschwitz and Winge 1994). It was probably introduced as a consequence of anthropogenic activity, with shipments from the Netherlands (Hatteland et al. 2013). *A. vulgaris* became a serious pest in many parts of southern Norway during the 1990s. Observations in Sweden showed that by increasing in population density, introduced *A. vulgaris* may outcompete native *A. ater* (von Proschwitz 1997). The same observation has been reported from Surrey in the UK, where a localized population of *A. vulgaris* has become established (Davies 1987). Hatteland et al. (2013) studied the distribution of this pest slug in Norway and discovered that *A. vulgaris* is common in large parts of southern Norway and currently occurs as far north as Troms county, north of the Arctic Circle (Hatteland et al. 2013). In Norway, we have detected eight distinct COI haplotypes, the most frequent being haplotype 1, which is also present in southern Europe. In Molde, one of the localities returning an early Norwegian record of *A. vulgaris*, haplotypes 1 and 3 were present.

Based on the comparison of haplotype diversity among species, it was suggested that *A. vulgaris*, with the lowest diversity was invasive, as compared with *A. ater* and *A. rufus* (Zemanova et al. 2016). The degree of genetic variation at a locus within a species depends on the complex interplay of mutation rate, migration rate, effective population size, population structure, age of the species, its demographic history, and acting selective forces. To deduce one particular cause from an interspecific comparison of intraspecific genetic variability is therefore not sufficient. Despite the fact that a high number of haplotypes have been detected in *A. vulgaris* populations, genetic differentiation is relatively low and can be considered as intraspecific genetic variation (Watanabe and Chiba 2001; Sánchez et al. 2011).

Former studies investigating the invasive status and putative origin were either limited by the population samples (Pfenninger et al. 2014) or by the number of loci (ND1 and COI) (Zemanova et al. 2016), which are both mitochondrial and as such segregate as a single locus as well as the choice of analysis (mtDNA mismatch distribution analysis) (Zemanova et al. 2016), which does not seem to be suitable for inference of population historic

Table 3 Sampling localities with number of observed haplotypes of mtDNA and nDNA sequences. *N*—number of populations from each country used for phylogenetic and phylogeographic analyses; italicised number indicates number of detected haplotypes in each country; numbers in brackets are the identification number of a particular haplotype

Country	<i>N</i>	Source			Haplotypes	
		This study	Pfenninger et al. 2014	Zemanova et al. 2016	COI	ZF
Austria	4	0	2	2	4 (1, 2, 3, 38)	3 (1, 2, 10)
Belgium	1	0	0	1	2 (3, 31)	0
Bulgaria	1	0	0	1	1 (3)	0
Croatia	1	0	0	1	2 (3, 21)	0
Czech Republic	1	0	0	1	1 (3)	0
Denmark	5	3	1	1	3 (1, 3, 21)	6 (1, 2, 3, 4, 5, 6)
Estonia	1	0	0	1	1 (3)	0
Faroe Islands	1	0	0	1	1 (1)	0
France	16	5	7	4	16 (2, 3, 10, 11, 12, 20, 23, 24, 25, 27, 28, 29, 31, 34, 35, 36)	9 (1, 2, 5, 7, 8, 10, 18, 22, 24)
Germany	20	3	15	2	9 (1, 2, 3, 4, 9, 17, 20, 32, 33)	17 (1, 2, 3, 9, 10, 12, 13, 14, 15, 16, 17, 18, 19, 20, 21, 22, 23)
Hungary	1	0	0	1	2 (1, 20)	0
Italy	2	0	0	2	3 (3, 4, 26)	0
Latvia	1	0	0	1	1 (3)	0
Lithuania	1	0	0	1	1 (3)	0
Netherlands	2	0	1	1	1 (1)	2 (1, 11)
Norway	13	12	0	1	8 (1, 3, 4, 5, 6, 7, 8, 9)	4 (1, 2, 3, 5)
Poland	11	9	0	2	11 (1, 3, 4, 13, 14, 15, 16, 17, 18, 19, 25)	4 (1, 2, 3, 5)
Romania	1	0	0	1	1 (3)	0
Serbia	1	0	0	1	1 (3)	0
Slovakia	1	0	0	1	1 (3)	0
Slovenia	1	0	1	0	1 (4)	1 (1)
Spain	4	1	0	3	3 (4, 30, 39)	0
Sweden	1	0	0	1	1 (3)	0
Switzerland	6	3	2	1	8 (3, 4, 17, 20, 21, 22, 25, 37)	2 (1, 2)
UK	1	0	0	1	1 (25)	0
Ukraine	1	0	0	1	1 (25)	0

events (Schenekar and Weiss 2011; Grant 2015), and putative boom-bust cycles and metapopulation structure which may account for the low genetic diversity in some German and French populations have not been taken into account in previous analyses (ABC by Zemanova et al. 2016).

In conclusion, our comprehensive data set plus the two previous studies (Pfenninger et al. 2014; Zemanova et al. 2016) conformed well with the previous assumption of a long-lasting presence in the regions of West and Central Europe, i.e. France and Western Germany (Pfenninger et al. 2014), while in Eastern Europe, the spatial pattern of genetic diversity is compatible with the well-documented recent, anthropogenically driven invasion (or perhaps better expansion, as a region immediately adjacent

to the native range was colonized). Unfortunately, we had no data from the former GDR available. It is tempting to assume that the expansion into the East is related to the fall of the iron curtain in the early 1990s with a subsequent enormous increase in trade between Western and Eastern Europe.

Interestingly, the Scandinavian populations show neither a clear signature of a very recent anthropogenic introduction nor are they as variable as the Western and Central populations. This might be an effect of a postglacial recolonization, while the Western and Central populations were probably part of the Pleistocene refugium (Pfenninger et al. 2014). However, this contradicts the recorded history of the spread of the species in

Scandinavia. The Scandinavian populations, and others transported by anthropogenic activities, will be unlikely to show a clear pattern, as it depends where they are from originally. Generally, introduced populations may be expected to show higher heterozygosity/diversity, but not if only a single founder was introduced. Subsequent loss of diversity may be expected through continued inbreeding, and perhaps through hybridization with endemic *A. ater*.

Phylogenies showed that all detected haplotypes of *A. vulgaris* clustered in one clade, together with sequences designated as *A. lusitanicus* deposited in GenBank. Both Bayesian and ML phylogenetic trees confirm that *A. vulgaris* is the closest relative of *A. rufus* and *A. ater*, a finding reminiscent of earlier studies (Quinteiro et al. 2005; Hatteland et al. 2015). Distinction of separate clades among *A. subfuscus* and *A. flagellus* indicate that observed high genetic variability within particular taxa may result from incorrect identification or presence of cryptic species complexes (Pinceel et al. 2004; Pfenninger and Schwenk 2007; Jordaens et al. 2010).

Our work suggests that *A. vulgaris* may be native to France and Western Germany, based on the genetic diversity patterns of both mitochondrial and nuclear loci. Thus, *A. vulgaris* is probably alien/invasive in other parts of Europe where it occurs. Lower genetic diversity in *A. vulgaris* was observed in Eastern Europe, which definitely justifies the classification as an alien species in this region. However, if the species has a wider native distribution in Central Europe, its biological traits have changed drastically in the last decades to explain why it has been recorded as a major pest in the last 40–50 years, as suggested by Cameron (2016). Future studies need to explore further the understanding of this and other invasive species bridging population genetic studies with other species traits such as reproductive output, food preferences and interactions with natural enemies.

Acknowledgements The first author of this work thanks Daniel Stec (Jagiellonian University) for his support and helpful comments during writing of this manuscript.

Funding information This work was supported by Senckenberg Biodiversity and Climate Research Centre (BIK-F) in Frankfurt am Main (Germany), grants from the Polish-Norwegian Scientific Cooperation (Pol-Nor/201888/77) and Jagiellonian University (K/ZDS/006320).

Data availability The molecular genetic datasets generated during and/or analysed during the current study are available in the GenBank repository, [<https://www.ncbi.nlm.nih.gov/genbank/>].

Compliance with ethical standards

Conflict of interest The authors declare that they have no conflict of interest.

Open Access This article is licensed under a Creative Commons Attribution 4.0 International License, which permits use, sharing, adaptation, distribution and reproduction in any medium or format, as long as you give appropriate credit to the original author(s) and the source, provide a link to the Creative Commons licence, and indicate if changes were made. The images or other third party material in this article are included in the article's Creative Commons licence, unless indicated otherwise in a credit line to the material. If material is not included in the article's Creative Commons licence and your intended use is not permitted by statutory regulation or exceeds the permitted use, you will need to obtain permission directly from the copyright holder. To view a copy of this licence, visit <http://creativecommons.org/licenses/by/4.0/>.

References

- Bandelt, H., Forster, P., & Röhl, A. (1999). Median-joining networks for inferring intraspecific phylogenies. *Molecular Biology and Evolution*, *16*, 37–48.
- Barr, N. B., Cook, A., Elder, P., Molongoski, J., Prasher, D., & Robinson, D. G. (2009). Application of a DNA barcode using the 16S rRNA gene to diagnose pest *Arion* species in the USA. *Journal of Molluscan Studies*, *75*, 187–191.
- Cameron, R. (2016). *Slugs and snails*. New York: HarperCollins Publishers.
- Castillejo, J. (1997). *Babosas del Noroeste Iberico*. Santiago de Compostela: Universidade de Santiago de Compostela.
- Chevallier, H. (1972). Arionidae (Mollusca, Pulmonata) des Alpes et du Jura français. *Haliotis*, *2*, 7–23.
- Davies, S. M. (1987). *Arion flagellus* Collinge and *Arion lusitanicus* Mabille in the British Isles: A morphological, biological and taxonomic investigation. *Journal of Conchology*, *32*, 339–354.
- Davis, M. A. (2009). *Invasion biology*. Oxford: Oxford University Press.
- Dreijers, E., Reise, H., & Hutchinson, J. M. C. (2013). Mating of the slugs *Arion lusitanicus* auct. non Mabille and *A. rufus* (L.): Different genitalia and mating behaviours are incomplete barriers to interspecific sperm exchange. *Journal of Molluscan Studies*, *79*, 51–63.
- Evans, N. J. (1986). An investigation of the status of the terrestrial slugs *Arion ater ater* (L.) and *Arion ater rufus* (L.) (Mollusca, Gastropoda, Pulmonata) in Britain. *Zoologica Scripta*, *15*, 313–322.
- Excoffier, L., & Lischer, H. E. (2010). Arlequin suite ver 3.5: a new series of programs to perform population genetics analyses under Linux and Windows. *Molecular Ecology Resources*, *10*, 564–567.
- Falkner, G., Ripken, T. E. J., & Falkner, M. (2002). Mollusques continentaux de France listede reference annotée et bibliographie. *Museum d'Histoire Naturelle, Patrimoines Naturels*, *52*, 350.
- Folmer, O., Black, M., Hoeh, W., Lutz, R. A., & Vrijenhoek, R. C. (1994). DNA primers for amplification of mitochondrial cytochrome c oxidase subunit I from diverse metazoan invertebrates. *Molecular Marine Biology and Biotechnology*, *3*, 294–299.
- Frank, T. (1998). Slug damage and number of slugs (Gastropoda: Pulmonata) in winter wheat in fields with sown wildflower strips. *Journal of Molluscan Studies*, *64*, 319–328.
- Grant, W. S. (2015). Problems and cautions with sequence mismatch analysis and Bayesian skyline plots to infer historical demography. *Journal of Heredity*, *106*, 333–346.
- Gren, I.-M., Isacs, L., & Carlsson, M. (2009). Costs of alien invasive species in Sweden. *Ambio*, *38*, 135–140.
- Hall, T. A. (1999). BioEdit: a user-friendly biological sequence alignment editor and analysis program for Windows 95/98/NT. *Nucleic Acids Symposium Series*, *41*, 95–98.
- Hammer, Ø., Harper, D. A. T., & Ryan, P. D. (2001). PAST: Paleontological statistics software package for education and data analysis. *Palaeontologia Electronica*, *4*, 9.

- Hatteland, B. A., Roth, S., Andersen, A., Kaasa, K., Støa, B., & Solhøy, T. (2013). Distribution and spread of the invasive slug *Arion vulgaris* Moquin-Tandon in Norway. *Fauna Norvegica*, 32, 13–26.
- Hatteland, B. A., Solhøy, T., Schander, C., Skage, M., von Proschwitz, T., & Noble, L. R. (2015). Introgression and differentiation of the invasive slug *Arion vulgaris* from native *A. ater*. *Malacologia*, 58, 303–321.
- Huelsenbeck, J. P., & Ronquist, F. (2001). MRBAYES: Bayesian inference of phylogeny. *Bioinformatics*, 17, 754–755.
- Huelsenbeck, J. P., Ronquist, F., Nielsen, R., & Bollback, J. P. (2001). Bayesian inference of phylogeny and its impact on evolutionary biology. *Science*, 294, 2310–2314.
- Jordaens, K., Pincheel, J., van Houtte, N., Breugelmans, K., & Backeljau, T. (2010). *Arion transsylvanus* (Mollusca, Pulmonata, Arionidae): rediscovery of a cryptic species. *Zoologica Scripta*, 39, 343–362.
- Kałużski, T., Soroka, M., & Kozłowski, J. (2011). Zmienność trzech europejskich gatunków ślimaków z rodzaju *Arion* w świetle badań molekularnych. *Progress in Plant Protection*, 51, 1119–1124.
- Katoh, K., & Toh, H. (2008). Recent developments in the MAFFT multiple sequence alignment program. *Briefings in Bioinformatics*, 9, 286–298.
- Katoh, K., Misawa, K., Kuma, K., & Miyata, T. (2002). MAFFT: A novel method for rapid multiple sequence alignment based on fast Fourier transform. *Nucleic Acids Research*, 30, 3059–3066.
- Kozłowski, J. (2010). *Ślimaki nagie w uprawach. Klucz do identyfikacji. Metody zwalczania*. Poznań: Instytut Ochrony Roślin - Państwowy Instytut Badawczy.
- Kozłowski, J. (2012). The significance of alien and invasive slug species for plant communities in agroecosystems. *Journal of Plant Protection Research*, 52, 67–76.
- Kozłowski, J., & Kornobis, S. (1994). *Arion* sp. (Gastropoda: Arionidae) - szkodnik zagrażający roślinom uprawnym w województwie rzeszowskim. In: *Materiały XXXIV Sesji Naukowej Instytutu Ochrony Roślin. Część II - Postery* (pp. 237–239). Poznań.
- Kozłowski, J., & Kornobis, S. (1995). *Arion lusitanicus* Mabilles, 1868 (Gastropoda: Arionidae) w Polsce oraz nowe stanowisko *Arion rufus* (Linnaeus, 1758). *Przegląd Zoologiczny*, 39, 79–82.
- Kozłowski, J., & Kozłowski, R. (2011). Expansion of the invasive slug species *Arion lusitanicus* Mabilles, 1868 (Gastropoda: Pulmonata: Stylommatophora) and dangers to garden crops. *Folia Malacologica*, 19, 249–258.
- Kumar, S., Stecher, G., & Tamura, K. (2016). MEGA7: Molecular evolutionary genetics analysis version 7.0 for bigger datasets. *Molecular Biology and Evolution*, 33, 1870–1874.
- Lanfear, R., Frandsen, P. B., Wright, A. M., Senfeld, T., & Calcott, B. (2016). PartitionFinder 2: new methods for selecting partitioned models of evolution for molecular and morphological phylogenetic analyses. *Molecular Biology and Evolution*, 34, 772–773.
- Librado, P., & Rozas, J. (2009). DnaSP v5: a software for comprehensive analysis of DNA polymorphism data. *Bioinformatics*, 25, 1451–1452.
- Montero-Pau, J., Gómez, A., & Muñoz, J. (2008). Application of an inexpensive and high-throughput genomic DNA extraction method for the molecular ecology of zooplanktonic diapausing eggs. *Limnology and Oceanography: Methods*, 6, 218–222.
- Noble, L. R. (1992). Differentiation of large arionid slugs (Mollusca, Pulmonata) using ligula morphology. *Zoologica Scripta*, 21, 255–263.
- Pfenninger, M., & Schwenk, K. (2007). Cryptic animal species are homogeneously distributed among taxa and biogeographical regions. *BMC Evolutionary Biology*, 7, 121.
- Pfenninger, M., Weigand, A., Bálint, M., & Klusmann-Kolb, A. (2014). Misperceived invasion: the Lusitanian slug (*Arion lusitanicus* auct. non-Mabilles or *Arion vulgaris* Moquin-Tandon 1855) is native to Central Europe. *Evolutionary Applications*, 7, 702–713.
- Pincheel, J., Jordaens, K., van Houtte, N., de Winter, A. J., & Backeljau, T. (2004). Molecular and morphological data reveal cryptic taxonomic diversity in the terrestrial slug complex *Arion subfuscus/fuscus* (Mollusca, Pulmonata, Arionidae) in continental north-west Europe. *Biological Journal of Linnean Society*, 83, 23–38.
- Quick, H. E. (1952). Rediscovery of *Arion lusitanicus* Mabilles in Britain. *Proceedings of the Malacological Society of London*, 29, 93–101.
- Quick, H. E. (1960). British slugs (Pulmonata: Testacellidae, Arionidae, Limacidae). *Bulletin of the British Museum (Natural History: Zoology)*, 6, 103–226.
- Quinteiro, J., Rodríguez-Castro, J., Iglesias-Piñeiro, J., & Rey-Méndez, M. (2005). Phylogeny of slug species of the genus *Arion*: evidence of monophyly of Iberian endemics and of the existence of relict species in Pyrenean refuges. *Journal of Zoological Systematics and Evolutionary Research*, 43, 139–148.
- Rabitsch, W. (2006). DAISIE - *Arion vulgaris* (Moquin-Tandon, 1855) fact sheet. - online database of delivering alien invasive species inventories for Europe.
- Rambaut, A., Suchard, M. A., Xie, D., & Drummond, A. J. (2014). Tracer v1.6. <http://beast.bio.ed.ac.uk/Tracer>. Accessed 10 February 2018.
- Riedel, A., & Wiktor, A. (1974). Arionacea. Ślimaki krążalkowate i ślimakowate (Gastropoda: Stylommatophora). Warszawa: PWN.
- Roth, S., Hatteland, B. A., & Solhøy, T. (2012). Some notes on reproductive biology and mating behaviour of *Arion vulgaris* Moquin-Tandon 1855 in Norway including a mating experiment with a hybrid of *Arion rufus* (Linnaeus 1758) x *ater* (Linnaeus 1758). *Journal of Conchology*, 41, 249–258.
- Sánchez, R., Sepúlveda, R. D., Brante, A., & Cárdenas, L. (2011). Spatial pattern of genetic and morphological diversity in the direct developer *Acanthina monodon* (Gastropoda: Mollusca). *Marine Ecology Progress Series*, 434, 121–131.
- Sax, D. F., Stachowicz, J. J., & Gaines, S. D. (2005). *Species invasions: insights into ecology, evolution and biogeography*. Sunderland: Sinauer Associates Incorporated.
- Schenecker, T., & Weiss, S. (2011). High rate of calculation errors in mismatch distribution analysis results in numerous false inferences of biological importance. *Heredity*, 107, 511–512.
- Simroth, H. (1891). Die Nachtschnecken der portugiesisch-azorischen Fauna. *Nova Acta Verh Kais Leop Carol Dtsch Akad Naturf*, 56, 201–424.
- Slotsbo, S., Hansen, L. M., Jordaens, K., Backeljau, T., Malmendal, A., Nielsen, N. C., & Holmstrup, M. (2012). Cold tolerance and freeze-induced glucose accumulation in three terrestrial slugs. *Comparative Biochemistry and Physiology A*, 161, 443–449.
- Soroka, M., Kozłowski, J., Wiktor, A., & Kałużski, T. (2009). Distribution and genetic diversity of the terrestrial slugs *Arion lusitanicus* Mabilles, 1868 and *Arion rufus* (Linnaeus, 1758) in Poland based on mitochondrial DNA. *Folia Biologica*, 57, 71–81.
- Stamatakis, A. (2014). RAxML version 8: a tool for phylogenetic analysis and post-analysis of large phylogenies. *Bioinformatics*, 30, 1312–1313.
- van Regteren Altena, C. O. (1971). Neue Fundorte von *Arion lusitanicus* Mabilles. *Archiv für Molluskenkunde*, 101, 183–185.
- von Proschwitz, T. (1997). *Arion lusitanicus* Mabilles and *A. rufus* (L.) in Sweden: a comparison of occurrence, spread and naturalization of two alien slug species. *Heldia*, 4, 137–138.
- von Proschwitz, T., & Winge, K. (1994). Iberiaskogsnegl - en art på spredning i Norge (in Norwegian). “The Iberian slug - a species expanding in Norway”. *Fauna*, 47, 195–203.
- Walther, G. R., Roques, A., Hulme, P. E., Sykes, M. T., Pysek, P., Kühn, I., Zobel, M., Bacher, S., Botta-Dukát, Z., Bugmann, H., Czúcz, B., Dauber, J., Hickler, T., Jarosik, V., Kenis, M., Klotz, S., Minchin, D., Moora, M., Nentwig, W., Ott, J., Panov, V. E., Reineking, B., Robinet, C., Semchenko, V., Solarz, W., Thuiller, W., Vilà, M., Vohland, K., & Settele, J. (2009). Alien species in a warmer world: risks and opportunities. *Trends in Ecology and Evolution*, 24, 686–693.
- Watanabe, Y., & Chiba, S. (2001). High within-population mitochondrial DNA variation due to microvariance and population mixing in the land snail *Euhadra quaesita* (Pulmonata: Bradybaenidae). *Molecular Ecology*, 10, 2635–2645.
- Weidema, I. (2006). NOBANIS - Invasive alien species fact sheet *Arion lusitanicus* (or *vulgaris*).

- Welter-Schultes, F. (2012). *European non-marine molluscs. A guide for species identification*. Gottingen: Planet Poster Editions.
- Wiktor, A. (2004). *Ślimaki lądowe Polski*. Mantis: Olsztyn.
- Zajac, K. S., Gaweł, M., Filipiak, A., & Kramarz, P. (2017). *Arion vulgaris* Moquin-Tandon, 1855 - the aetiology of an invasive species. *Folia Malacologica*, 25, 81–93.
- Zemanova, M., Knop, E., & Heckel, G. (2016). Phylogeographic past and invasive presence of *Arion* pest slugs in Europe. *Molecular Ecology*, 25, 5747–5764.

Publisher's note Springer Nature remains neutral with regard to jurisdictional claims in published maps and institutional affiliations.