

Erratum to: Transient Aortic Occlusion Augments Collateral Blood Flow and Reduces Mortality During Severe Ischemia Due to Proximal Middle Cerebral Artery Occlusion

Gomathi Ramakrishnan^{1,2} • Bin Dong¹ • Kathryn G. Todd^{1,2} • Ashfaq Shuaib^{2,3} • Ian R. Winship^{1,2}

Published online: 28 January 2016
© Springer Science+Business Media New York 2016

Erratum to: Transl Stroke Res
DOI 10.1007/s12975-015-0443-5

Figure 1c was labeled incorrectly. The corrected figure appears below.

The authors regret the error.

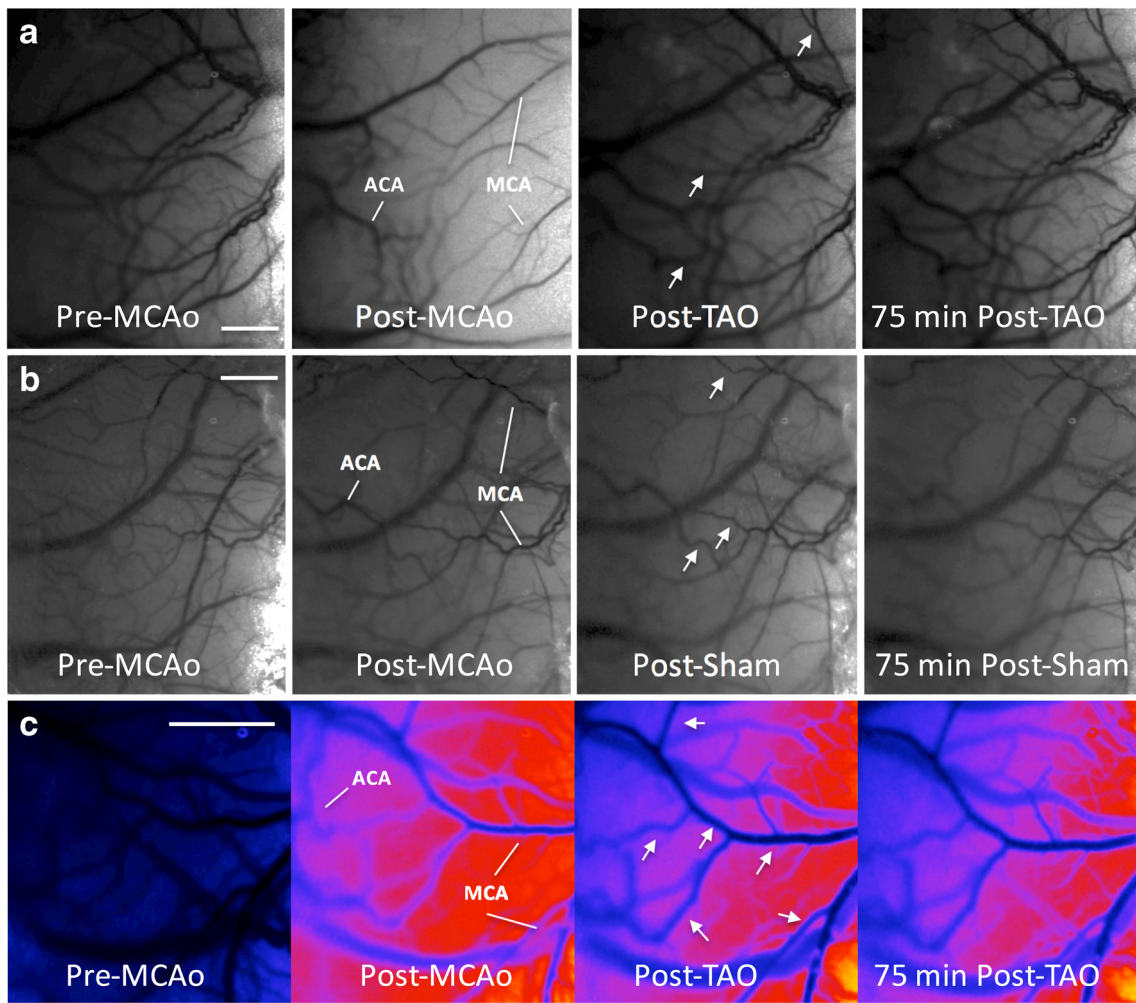
The online version of the original article can be found at <http://doi.dx.org/10.1007/s12975-015-0443-5>.

✉ Ian R. Winship
iwinship@ualberta.ca

¹ Neurochemical Research Unit, Department of Psychiatry, Faculty of Medicine and Dentistry, University of Alberta, Edmonton, AB, Canada

² Neuroscience and Mental Health Institute, University of Alberta, 12-127 Clinical Sciences Building, Edmonton, AB T6G 2R3, Canada

³ Division of Neurology, Department of Medicine, Faculty of Medicine and Dentistry, University of Alberta, Edmonton, AB, Canada



d

	TAO (n=10)	Sham (n=11)
Survived	10 (100%)	7 (64%)
Mortality	0 (0%)	4 (36%)

