



Effects of Self-Compassion Interventions on Reducing Depressive Symptoms, Anxiety, and Stress: A Meta-Analysis

Areum Han¹ · Tae Hui Kim²

Accepted: 11 May 2023 / Published online: 5 June 2023

© The Author(s), under exclusive licence to Springer Science+Business Media, LLC, part of Springer Nature 2023

Abstract

Objectives A growing body of evidence shows self-compassion can play a key role in alleviating depressive symptoms, anxiety, and stress in various populations. Interventions fostering self-compassion have recently received increased attention. This meta-analysis aimed to identify studies that measured effects of self-compassion focused interventions on reducing depressive symptoms, anxiety, and stress.

Methods A comprehensive search was conducted within four databases to identify relevant randomized controlled trials (RCTs). The quality of the included RCTs was assessed using the Cochrane Collaboration risk-of-bias tool. Either a random-effects model or fixed-effects model was used. Subgroup analyses were conducted according to types of control groups, intervention delivery modes, and the involvement of directly targeted populations with psychological distress symptoms.

Results Fifty-six RCTs met the eligibility criteria. Meta-analyses showed self-compassion focused interventions had small to medium effects on reducing depressive symptoms, anxiety, and stress at the immediate posttest and small effects on reducing depressive symptoms and stress at follow-up compared to control conditions. The overall risk of bias across included RCTs was high.

Conclusions Fewer studies were conducted to compare effects of self-compassion interventions to active control conditions. Also, fewer studies involved online self-compassion interventions than in-person interventions and directly targeted people with distress symptoms. Further high-quality studies are needed to verify effects of self-compassion interventions on depressive symptoms, anxiety, and stress. As more studies are implemented, future meta-analyses of self-compassion interventions may consider conducting subgroup analyses according to intervention doses, specific self-compassion intervention techniques involved, and specific comparison or control groups.

Preregistration This study is not preregistered.

Keywords Anxiety · Depression · Meta-analysis · Self-compassion · Stress

Compassion can be defined as “a basic kindness, with a deep awareness of the suffering of oneself and of other living things, coupled with the wish and effort to relieve it” (Gilbert, 2009, p. 13). In particular, compassion toward ourselves, or self-compassion, is the ability to be open to

and alleviate one’s own difficulties with kindness and non-judgmental understanding (Neff, 2003). For example, Neff (2003) has conceptualized self-compassion as entailing three interrelated elements: self-kindness (i.e., being supportive and kind to oneself rather than being self-critical with harsh judgment), common humanity (i.e., acknowledging life challenges as part of the human experience), and mindfulness (having a moment-to-moment awareness of one’s experience in a nonjudgmental and accepting way).

A growing body of evidence shows self-compassion can play an important role in alleviating depressive symptoms, anxiety, and stress in various populations, including clinical (e.g., individuals with major depressive disorder and individuals with chronic pain) and nonclinical populations (e.g., undergraduate students, family caregivers of people with chronic conditions, and older adults) (Biddle

✉ Tae Hui Kim
gooddr@yonsei.ac.kr

Areum Han
ahan@uab.edu

¹ Department of Occupational Therapy, University of Alabama at Birmingham, SHPB 339, 1720 2Nd Ave South, Birmingham, AL 35294, USA

² Department of Psychiatry, Yonsei University Wonju College of Medicine, 20 Ilsan-RoGangwon Province, Wonju 26426, South Korea

et al., 2020; Bui et al., 2021; Carvalho et al., 2020; Kim & Ko, 2018; Krieger et al., 2013; Murfield et al., 2020). For example, studies found higher levels of self-compassion were related to lower levels of depressive symptoms, anxiety, and perceived stress (Bohadana et al., 2019; Bui et al., 2021; Kim & Ko, 2018; Krieger et al., 2013; Murfield et al., 2020) and predicted lower levels of depressive symptoms, anxiety, and stress (Bates et al., 2021; Biddle et al., 2020; Carvalho et al., 2020). Studies also showed the mediating role of self-compassion in the relationship of life challenges (e.g., perceived COVID-19 threat and caregiving stress) with depressive symptoms, anxiety, and stress, suggesting self-compassion buffered the impacts of life challenges on depressive symptoms, anxiety, and stress (Hsieh et al., 2019; Kavaklı et al., 2020; Lau et al., 2020). Studies suggested that fostering self-compassion may reduce depressive symptoms, anxiety, and stress by enhancing mindful awareness and emotion regulation and improving the ability to engage in self-compassionate actions while not engaging in symptom-focused rumination and cognitive and behavioral avoidance (Adie et al., 2021; Bates et al., 2021; Bui et al., 2021; Hsieh et al., 2019; Krieger et al., 2013; Murfield et al., 2020).

Interventions aiming to foster self-compassion have recently received increased attention. To our knowledge, the most recent meta-analyses regarding effects of self-compassion interventions on reducing depressive symptoms, anxiety, or stress were conducted in 2017 (Ferrari et al., 2019; Wilson et al., 2019). In Ferrari et al. (2019), the final database search was completed in August, 2017 to identify relevant randomized controlled trials (RCTs) in which interventions focused on self-compassion for both clinical and non-clinical human participants (i.e., without any limits on the population). The meta-analysis of Ferrari et al. (2019) found medium effects of self-compassion interventions on reducing depressive symptoms (based on 15 RCTs), anxiety (based on 14 RCTs), and stress (based on five RCTs). Wilson et al. (2019) also conducted a meta-analysis of self-compassion interventions (database search up to July, 2017) and found small effects on depressive symptoms and anxiety. However, Wilson et al. (2019) included interventions with a self-compassion component rather than including interventions focusing on self-compassion only, which might have allowed the found effects to be influenced by intervention components other than self-compassion.

Considering the increased attention on self-compassion interventions, especially in recent years, an updated meta-analysis is needed to better determine the most up-to-date evidence regarding effects of self-compassion interventions on reducing depressive symptoms, anxiety, and stress. Therefore, this meta-analysis aimed to identify studies that measured the effects of self-compassion focused interventions on depressive symptoms, anxiety, or stress. The present study

also aimed to conduct subgroup analyses for each outcome according to the type of control groups, when appropriate, to see whether effects of self-compassion interventions differed compared to active control groups provided with other comparable interventions and to passive control groups provided with no intervention. In addition, other subgroup analyses related to the characteristics of the included studies may be conducted and provide useful information. For example, how self-compassion focused interventions (such as in-person programs and online programs) were delivered might affect outcomes differently, and studies that directly targeted populations with psychological distress symptoms might show larger effects on these symptoms compared to non-clinical populations (Thompson et al., 2021). Therefore, the present study also aimed to conduct additional subgroup analyses according to the intervention delivery modes and the use of targeted participants with psychological distress symptoms, when applicable.

Method

This meta-analysis was conducted and reported in accordance with the preferred reporting items for systematic reviews and meta-analyses (PRISMA) statement (Page et al., 2021) and the Cochrane Handbook for Systematic Reviews of Interventions, version 5.1.0 (Higgins & Green, 2011), as a guide. The study protocol for the current review was not registered.

Search Strategy

Relevant articles were identified by searching four electronic databases from the date of inception of each database to October 9, 2021; these included PubMed (1966–2021), CINAHL (1981–2021), PsycINFO (1935–2021), and SCOPUS (1966–2021). Key search terms were combined to identify relevant literature using keywords for self-compassion and experimental research or interventions. To broaden the database search, keywords relevant to outcomes were not entered as search terms. The full search strategies for all databases can be found in the Supplemental Materials (Table S1). Articles were also manually searched by examining the reference lists of identified articles and utilizing related article features in databases. In addition, a search for recent articles published from October 10, 2021 to February 2, 2023 was conducted using electronic databases.

Eligibility Criteria

Studies were selected based on the following inclusion criteria: (a) the study must be an RCT; (b) the study must involve

a self-compassion intervention; (c) self-compassion must be the core intervention component if it was accompanied by another intervention component; (d) the study must address self-compassion theory and/or literature in the introduction; (e) the study must involve a comparison or a control condition other than self-compassion; (f) the study must involve validated measures of depressive symptoms, anxiety, or stress as outcome measures; and (g) the study must be written in English and published in a peer-reviewed journal. Studies were excluded if the self-compassion intervention involved a one-time brief activity (e.g., a one-time 30-min writing activity following self-compassionate prompts) or if the intervention involved self-compassion as an intervention component only without a core focus on self-compassion. There was no limit on characteristics of participants (e.g., age, gender, and clinical conditions).

Data Extraction and Quality Assessment

Characteristics of the included RCTs (e.g., the sample size, characteristics of participants, brief description of intervention and control groups, outcome measures, and results) were extracted into a table. Means and standard deviations (SD) for each data collection time point and sample sizes of intervention and control groups in the included studies were entered into an Excel file. The methodological quality of the included RCTs was assessed using the Cochrane Collaboration risk-of-bias tool (Higgins & Green, 2011). Domains in the tool include random sequence generation, allocation concealment, blinding of participants and personnel, blinding of outcome assessment, incomplete outcome data, and selective reporting. Risk of bias in each of the domains was judged as “low risk” of bias, “high risk” of bias, or “unclear risk” of bias following the criteria provided in the Cochrane Collaboration’s handbook (Higgins & Green, 2011). Summary assessments of risk of bias within a study and across studies were also determined based on the handbook’s criteria (Higgins & Green, 2011). One author with extensive experiences in conducting systematic reviews with meta-analysis completed the process for data extraction and quality assessment.

Meta-analysis

Means, standard deviations, and sample sizes of intervention and control groups in the included studies were entered into RevMan Version 5.4 for meta-analyses and pooled for each outcome at the immediate posttest and at follow-up. The I^2 statistic was used to measure statistical heterogeneity across studies, and I^2 greater than 50% was interpreted as substantial heterogeneity (Higgins & Green, 2011). The decision for using either a random-effects model or a fixed-effects model with the inverse variance method was determined based on the I^2 statistic values for each outcome. In

other words, a random effects model was used when the I^2 statistic for each outcome was greater than 50%, otherwise a fixed effects model was used. The standardized mean difference (SMD) with 95% confidence intervals was used as a summary statistic for the size of the intervention effect to account for outcomes measured using different assessment tools (Higgins & Green, 2011). SMDs less than 0.4 indicate a small effect, SMDs between 0.4 and 0.7 indicate a medium effect, and SMDs greater than 0.7 indicate a large effect (Higgins & Green, 2011).

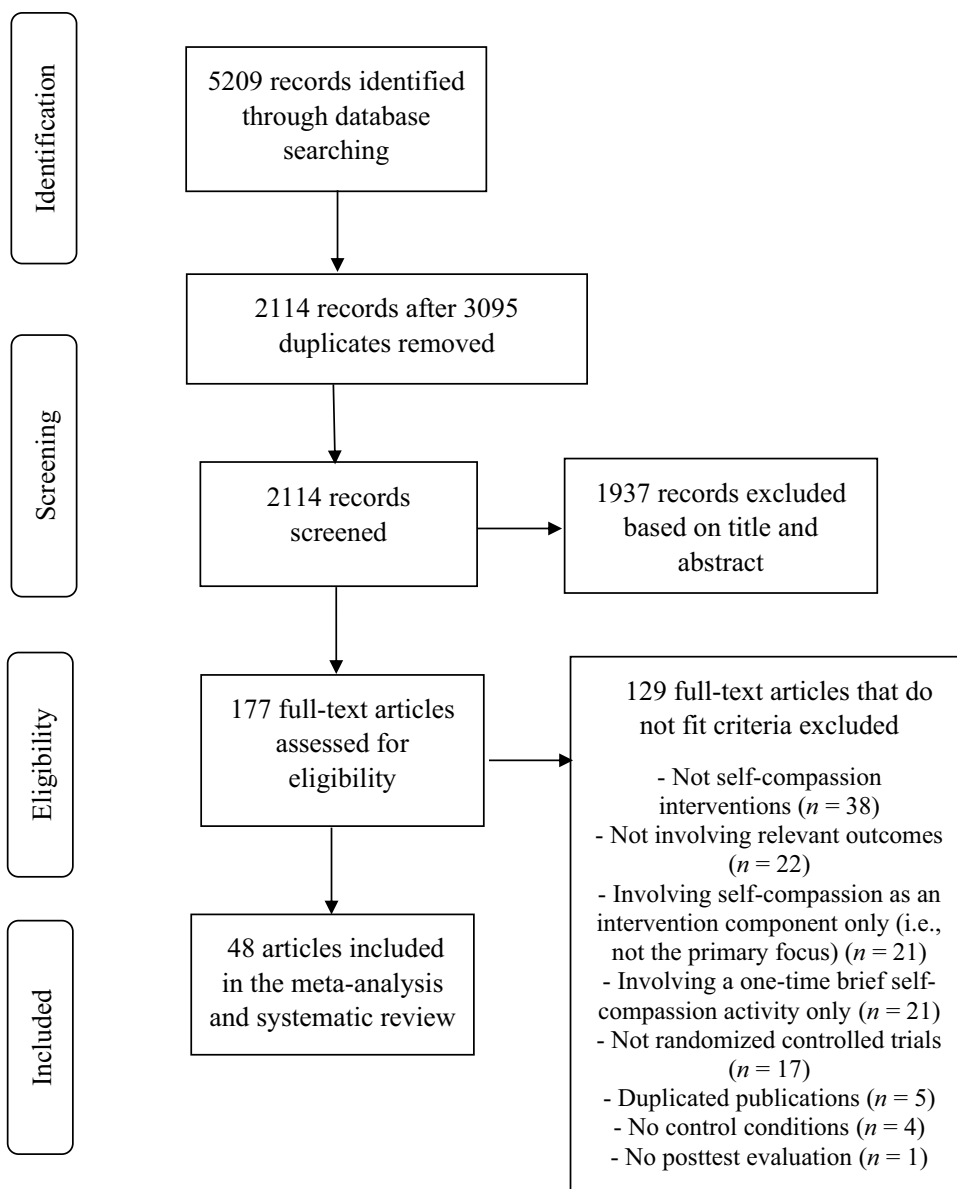
Subgroup analyses for each outcome were conducted according to the type of control groups, when appropriate, to see whether effects of self-compassion interventions differed compared to active control groups provided with other comparable interventions and to passive control groups provided with no intervention (i.e., treatment as usual control groups and waitlist control groups). In other words, Subgroup 1 compared self-compassion intervention groups to active control groups, and Subgroup 2 compared self-compassion intervention groups to passive control groups. Additional subgroup analyses for each outcome were conducted according to the intervention delivery modes (i.e., Subgroup 1: in-person self-compassion interventions vs. control groups; Subgroup 2: online self-compassion interventions vs. control groups) and the involvement of targeted participants with psychological distress symptoms, such as depressive symptoms, anxiety, or stress, as one of the eligibility criteria for study participation (i.e., Subgroup 1: self-compassion intervention groups that targeted distressed participants vs. control groups; Subgroup 2: self-compassion intervention groups that did not target distressed participants vs. control groups), when applicable.

Results

Selection of Studies

Figure 1 describes the study selection process. The initial database searches identified 5,209 articles. After removing 3,095 duplicates, 2,114 articles were screened and 1,937 were excluded based on title and abstract screening. Of the remaining articles, 177 were assessed for eligibility by reading the full text, and 129 articles were excluded for the following reasons: not a self-compassion intervention (38 articles); not involving measures of depressive symptoms, anxiety, or stress as outcomes (22 articles); involving self-compassion as an intervention component only without a core focus on self-compassion (21 articles); involving a one-time brief self-compassion activity only (21 articles); not an RCT (17 articles); duplicated publications (five articles); not involving a comparison or a control condition other than

Fig. 1 PRISMA flow diagram of study selection process



self-compassion (four articles); and not involving posttest evaluations (one article). Forty-eight studies from the initial search met the eligibility criteria, and eight studies from the second search for recent articles met the eligibility criteria. Thus, 56 studies met the eligibility criteria.

Characteristics of the Included Studies

The main characteristics of the 56 included RCTs are summarized in Table 1. Self-compassion interventions were delivered as in-person interventions in 28 studies; of these, 24 studies included group-based interventions (Anuwatgasem et al., 2020; Arimitsu, 2016; Bluth et al., 2016; Boggiss et al., 2020; Collado-Navarro et al., 2021; D'Alton et al., 2019; DeTore et al., 2022; Dundas et al., 2017; Friis et al.,

2016; Haukaas et al., 2018; Huang et al., 2021; Martínez-Borrás et al., 2022; Matos et al., 2022; Neff & Germer, 2013; Noorbala et al., 2013; Sajjadi et al., 2022; Savari et al., 2021; Schuling et al., 2020; Shahar et al., 2015; Torrijos-Zarcelo et al., 2021; Weibel et al., 2017; Woodfin et al., 2021; Yada-vaia et al., 2014; Zheng et al., 2022) and one study delivered interventions individually (Javidi et al., 2023). Three studies did not describe whether the interventions were delivered individually or as group-based interventions (Beaumont et al., 2012; Carlyle et al., 2019; Navab et al., 2019). A total of 23 studies involved self-compassion interventions administered online; 20 of these included interventions that ran in a web browser (Beshai et al., 2020; Cândia & Szentágotai-Tătar, 2018; Eriksson et al., 2018; Fernandes et al., 2022; Gammer et al., 2020; Guo et al., 2020; Hasselberg &

Table 1 Characteristics of the Included Studies

Reference; Country	Participants; Mean age; Female (%)	Descriptions of intervention and comparison/control groups	Relevant outcomes (measures); Data collection time points; Relevant results (between-group differences over time only)	Overall RoB
Al-Refae et al. (2021); Canada	165 adults who owned an iPhone (a diagnosis with a mental health disorder—25%); 25.24 years; 78.8%	- IG: A 4-week self-compassion-based smartphone app intervention combined with cognitive restructuring training (Serene) involving psychoeducation about self-compassion, mindfulness meditations, mindful journaling and self-compassionate writing, and cognitive restructuring (i.e., identification and modification of unhelpful thoughts or beliefs and developing and applying actions plans to modify one's behaviors) ($n = 78$) - CG: Waitlist control ($n = 87$)	Depressive symptoms (DASS-21-D), anxiety (DASS-21-A), and stress (DASS-21-S); Pretest and posttest; IG > CG in DASS-21-D and DASS-21-S over time ($p < .05$)	High
Anuwatgasem et al. (2020); Thailand	44 adults with diagnosis of MDD; NR; NR	- IG: 7 weekly sessions (1.5 hr per session) of group-based self-compassion-based therapy ($n = 23$) - CG: Standard psychotherapy group ($n = 11$)	Depressive symptoms (MADRS); anxiety (HADS-A), and stress (PSS); Pretest and posttest; No significant between-group differences in outcomes over time	High
Arimitsu (2016); Japan	40 individuals with low self-compassion (SCS < 17.35, which is the average score in a Japanese sample); 21.34 years; 75%	- IG: 7 weekly sessions (1.5 hr per session) of a group-based self-compassion program involving loving-kindness meditation practice, mindfulness training, compassionate imagery skill training, compassionate letter writing, and practice of compassionate behaviors ($n = 20$) - CG: Waitlist control ($n = 20$)	Depressive symptoms (BDI-II) and anxiety (STAI); Pretest, posttest, and 3-month F/U; CG > IG in STAI over time ($p = .05$)	High
Beaumont et al. (2012); UK	32 people with a traumatic incident (e.g., car accidents and accidents at work); NR; NR	- IG: 12 sessions of self-compassion training and CBT involving compassionate letter writing and use of imagery by bringing to mind a loving, accepting, and caring image ($n = 16$) - CG: 12 sessions of CBT covering cognitive restructuring, behavioral activation, graded exposure, relapse prevention, and Socratic dialog ($n = 16$)	Depressive symptoms (HADS-D) and anxiety (HADS-A); Pretest and posttest; IG > CG in HADS-D over time ($p < .001$)	High
Beshai et al. (2020); USA	456 adults with mild to moderate levels of depression, anxiety, or stress; 35.13 years; 43.9%	- IG: 4 weekly modules of a self-guided online self-compassion intervention involving psychoeducational videos introducing concepts, audio-guided mindfulness and loving-kindness meditation practice, and self-kindness practice (e.g., Self-Compassion Break exercise) ($n = 227$) - CG: Watching nature videos superimposed onto relaxing meditation music for 4 weeks (watching one video per week) ($n = 229$)	Depressive symptoms (PHQ-9), anxiety (GAD-7), and stress (PSS); Pretest and posttest; IG > CG in GAD-7 ($p < .05$) and PSS over time ($p = .001$)	Unclear
Bluth et al. (2016); USA	34 adolescents (aged 14 to 17 years) with depressive symptoms—score < 13 on a modified KADS; NR; 74%	- IG: 6 weekly sessions (1.5 hr per session) of a mindful self-compassion adolescent program involving psychoeducation regarding self-compassion, hands-on activities and practices for self-compassion, and guided audio and video recordings of self-compassion practices for home practice ($n = 16$) - CG: Waitlist control ($n = 18$)	Depressive symptoms (SMFQ), anxiety (STAI), and stress (PSS); Pretest and posttest; IG > CG in SMFQ over time ($p < .01$)	Unclear

Table 1 (continued)

Reference; Country	Participants; Mean age; Female (%)	Descriptions of intervention and comparison/control groups	Relevant outcomes (measures); Data collection time points; Relevant results (between-group differences over time only)	Overall RoB
Boggiss et al. (2020); New Zealand	27 adolescents (aged 12 to 16 years) with type 1 diabetes and a moderate to high instance of disordered eating behaviors as assessed by the DEPS-R; 13.9 years; 60%	<ul style="list-style-type: none"> - IG: Two sessions (2.5 hr per session) of a self-compassion intervention delivered 1 week apart involving group exercises and discussions, art activities, meditations, and individual reflection exercises exploring the three components of self-compassion and self-compassion coping tools to use in everyday life when experiencing difficult emotions ($n = 13$) - CG: Waitlist control ($n = 14$) 	Stress (PSS); Pretest and posttest; No significant between-group difference in PSS over time	High
Cândeia and Szentágotai-Tótar (2018); Romania	136 undergraduate students with social anxiety disorder ($30 \leq \text{LSAS-SR}$); 21.85 years; 88.23%	<ul style="list-style-type: none"> - IG: A 2-week self-compassion online training that involved explanation of self-compassion and exercises ($n = 42$) - CG1: A 2-week cognitive reappraisal online training that involved explanation of reappraisal and exercises ($n = 51$) - CG2: Waitlist control ($n = 43$) 	Anxiety (LSAS-SR); Pretest and posttest; No significant between-group difference in LSAS-SR over time	High
Carlyle et al. (2019); UK	38 adults (aged 22 to 62 years) who had a diagnosis of opioid use disorder and took a daily opioid substitute medication; 39.95 years; 36.84%	<ul style="list-style-type: none"> - IG: 3 weekly sessions (2 hr per session) of a self-compassion training program that involved psychoeducation regarding self-compassion and self-compassion exercises (e.g., compassionate body scan and writing a compassionate letter to self and an ideal compassionate self) with guided audio recordings for home practice ($n = 15$) - CG1: 3 weekly sessions (2 hr per session) of a relaxation training program that involved psychoeducation regarding relaxation and relaxation exercises (e.g., belly breathing and progressive muscle relaxation) with guided audio recordings for home practice ($n = 12$) - CG2: Waitlist control ($n = 11$) 	Depressive symptoms (DASS-21-D), anxiety (DASS-21-A), and stress (DASS-21-S); Pretest and posttest; No between-group differences in outcomes over time	Unclear
Collado-Navarro et al. (2021); Spain	90 adult outpatients (aged 18 to 75 years) with mild to moderate depressive and/or anxious disorder; 46.34 years; 86.67%	<ul style="list-style-type: none"> - IG: 8 weekly sessions (2 hr per session) of a group-based self-compassion program that involved psychoeducation, 30-min daily simple exercises with audio files, meditation, visualizations, and practices for self-compassion ($n = 30$) - CG1: 8 weekly sessions (2 hr per session) of a group-based MBSR program that involved meditation, individual and group dialogs and inquiries about perceptions and habits, and home practice ($n = 30$) - CG2: TAU ($n = 30$) 	Depressive symptoms (DASS-21-D), anxiety (DASS-21-A), and stress (DASS-21-S); Pretest, posttest, and 6-month F/U; IG & CG1 > CG2 in DASS-21 subscales over time ($p < .05$)	Unclear

Table 1 (continued)

Reference; Country	Participants; Mean age; Female (%)	Descriptions of intervention and comparison/control groups	Relevant outcomes (measures); Data collection time points; Relevant results (between-group differences over time only)	Overall RoB
D'Alton et al. (2019); Ireland	94 adults (≥ 18 years) with mild to moderate psoriasis; 49.89 years; 55.3%	<ul style="list-style-type: none"> - IG: 8 weekly sessions (2 hr per session) of a group-based mindfulness-based self-compassion program that involved guided self-compassion meditations (e.g., compassionate body scan), exercises (e.g., eyes on exercise), psychoeducation, and group discussion about the meditations and exercises with guided audio meditation recordings for daily mindfulness practice ($n = 25$) - CG1: 8 weekly sessions (2 hr per session) of a group-based MBCT program that involved guided mindfulness meditations, sharing experiences of these exercises, and teaching cognitive behavioral skills and techniques (e.g., cognitive defusion and recording pleasant events) with guided audio meditation recordings for daily mindfulness practice ($n = 25$) - CG2: TAU ($n = 22$) 	Depressive symptoms (HADS-D) and anxiety (HADS-A); Pretest, posttest, 6-month F/U, and 12-month F/U; No significant between group differences in outcomes over time	High
DeTore et al. (2022); USA	107 undergraduate students with mild to moderate depressive symptoms; 18.82 years; 71.03%	<ul style="list-style-type: none"> - IG: 4 weekly group sessions (1.5 hr per session) addressing self-compassion skill practice (e.g., self-compassion break, mindfulness exercise, self-compassion writing exercise, and self-compassion letter writing) with home practice (e.g., 3-min breathing exercise and self-compassion mindfulness exercise) ($n = 54$) - CG: Waitlist control ($n = 53$) 	Depressive symptoms (BDI) and anxiety (STAI); Pretest, posttest, and 12-month F/U; IG > CG in BDI ($p < .001$) and STAI over time ($p < .05$)	Unclear
Dundas et al. (2017); Norway	158 university students; 25 years; 85%	<ul style="list-style-type: none"> - IG: 3 sessions (1.5 hr per session) of a self-compassion course delivered over 2 weeks that involved lectures, self-compassion exercises, group discussions, and experiential practices with audio guides to self-compassion exercises for daily use ($n = 69$) - CG: Waitlist control ($n = 69$) 	Depressive symptoms (MDI) and anxiety (STAD); Pretest and posttest; IG > CG in MDI ($p < .05$) and STAI over time ($p < .001$)	High
Eriksson et al. (2018); Sweden	101 practicing psychologists; 36.2 years; 96.04%	<ul style="list-style-type: none"> - IG: A 6-week web-based mindful self-compassion program involving 15-min exercises per day, 6 days per week, for 6 weeks for self-compassion exercises with guided instructions as audio files such as loving kindness, pause for self-compassion, and body scan (10 hr in total) ($n = 52$) - CG: Waitlist control ($n = 49$) 	Stress (PSS); Pretest and posttest; IG > CG in PSS over time ($p < .001$)	High
Fernandes et al. (2022); Portugal	292 postpartum mothers (≥ 18 years) of a child (aged up to 18 months) with moderate or high levels of parenting stress; 34.03 years; 100%	<ul style="list-style-type: none"> - IG: 6 weekly modules (1 hr per module) of a self-guided, web-based, mindful, and compassionate parenting training with written materials, visual elements, audio tracks, and homework tasks, addressing psychoeducational materials, formal meditation practices (e.g., breath meditation), self-compassion practices, and mindful parenting exercises ($n = 146$) - CG: Waitlist control ($n = 146$) 	Depressive symptoms (EPDS), anxiety (HADS-A), and stress (Parental Stress Scale); Pretest and posttest; IG > CG in parental stress over time ($p = .05$)	High

Table 1 (continued)

Reference; Country	Participants; Mean age; Female (%)	Descriptions of intervention and comparison/control groups	Relevant outcomes (measures); Data collection time points; Relevant results (between-group differences over time only)	Overall RoB
Frits et al. (2016); New Zealand	63 adult patients (aged 18 to 70 years) with type 1 or type 2 diabetes; 44.37 years; 68.25%	- IG: 8 weekly sessions (2.5 hr per session) of a group-based mindful self-compassion program that involved general introduction of self-compassion, developing a compassionate inner voice, and skills practice for self-compassion and mindfulness ($n = 32$) - CG: Waitlist control ($n = 31$)	Depressive symptoms (PHQ-9) and stress (DSS); Pretest, posttest, and 3-month F/U; IG > CG in PHQ-9 ($p < .05$) and DSS over time ($p < .001$)	Unclear
Gammer et al. (2020); UK	206 mothers (≥ 18 years) of infants younger than 1 year; 35.19 years; 100%	- IG: 5 weekly sessions of a web-based self-compassion program over 5 to 6 weeks that involved 10–15 min per week for contents and a few minutes per day for exercises with a written description and an audio guide ($n = 105$) - CG: Waitlist control ($n = 101$)	Depressive symptoms (DASS-21-D), anxiety (DASS-21-A), and stress (DASS-21-S); Pretest, posttest, and 6-week F/U; No significant between group differences in outcomes over time	Unclear
Guo et al. (2020); China	314 female adults (aged 18 to 40 years) who were in the second or third trimester of pregnancy before 34 weeks and had antenatal depressive or anxiety symptoms (EPDS ≥ 9); 30.6 years; 100%	- IG: A 6-week web-based mindful self-compassion program that involved 10 hr of training with 36 mini-sessions in total (15 min per session, 6 mini-sessions a week) and used self-compassion exercises with guided instructions ($n = 157$) - CG: Waitlist control ($n = 157$)	Stress (PSS); baseline, 3 months, and 1 year postpartum; IG > CG in PSI over time ($p < .05$)	High
Hasselberg and Römlund (2020); Sweden	56 young adults (aged 18 to 25 years); 22.3 years; 89.29%	- IG: A 2-week web-based self-help self-compassion program (15 min of training per day, 5 days a week) that involved a prerecorded psycho-educative introduction of self-compassion and guided exercises of prerecorded video clips such as loving kindness meditation, breathing exercises, and body scan ($n = 28$) - CG: Waitlist control ($n = 28$)	Stress (PSS); Pretest and posttest; IG > CG in PSS over time ($p < .01$)	High
Haukaas et al. (2018); Norway	81 undergraduate and graduate students (63%—mild to severe depression; 64.2%—mild to severe anxiety); 22.9 years; 75.3%	- IG: 3 weekly sessions (45 min per session) of a group-based mindful self-compassion program that involved guided meditation and exercises designed to promote self-compassion (e.g., affectionate breathing and loving kindness meditation) provided with prerecorded audiotapes for daily practice ($n = 41$) - CG: 3 weekly sessions (45 min per session) of a group-based attention training program that involved a 12-min auditory exercise designed to strengthen attentional control and promote external focus of attention provided with prerecorded audiotapes for daily practice ($n = 40$)	Depressive symptoms (PHQ-9) and anxiety (GAD-7); Pretest, posttest, and 6-month F/U; No significant between group differences in outcomes over time	Unclear
Heid and Owens (2015); USA	27 homeless male veterans who were living in transitional housing facilities; 51.3 years; 0%	- IG: A 4-week self-administered self-compassion training that involved a workbook (e.g., learning to respond compassionately to one's own experiences and compassionate letter writing) and 5- to 15-min daily exercises ($n = 13$) - CG: A 4-week self-administered stress management training that involved a workbook (e.g., deep breathing and progressive muscle relaxation) and 5- to 15-min daily exercises ($n = 14$)	Stress (PCL-S); Pretest and posttest; CG > IG in PCL-S over time ($p < .01$)	Unclear

Table 1 (continued)

Reference; Country	Participants; Mean age; Female (%)	Descriptions of intervention and comparison/control groups	Relevant outcomes (measures); Data collection time points; Relevant results (between-group differences over time only)	Overall RoB
Huang et al. (2021); China	69 college students; 20.55 years; 71.21%	<ul style="list-style-type: none"> - IG: 4 weekly sessions (2 hr per session) of a group-based self-compassion program that involved psychoeducation about self-compassion and self-compassion skills training (e.g., affectionate breathing meditation and loving-kindness meditation) ($n = 32$) - CG: Waitlist control ($n = 37$) 	Depressive symptoms (DASS-21-D), anxiety (DASS-21-A), and stress (DASS-21-S); Pretest, posttest, and 1-month F/U; IG > CG in DASS-21-D ($p < .001$) and DASS-21-S over time ($p < .05$)	High
Javidi et al. (2023); Australia	82 adults (aged 18 to 65 years) with a primary diagnosis of either a depressive disorder or PTSD; 38.75 years; 74.2%	<ul style="list-style-type: none"> - IG: 12 sessions of an individual self-compassion training program combined with behavioral therapy (i.e., behavioral activation within CBT) that involved psychoeducation on three elements of self-compassion, practice taking a self-compassion break, compassionate letter writing to self, and building a self-compassionate image ($n = 41$) - CG: 12 sessions of an individual CBT program that involved psychoeducation, cognitive restructuring, and behavioral activation ($n = 41$) 	Depressive symptoms (PHQ-9) and stress (K10); Pretest and posttest; IG > CG in PHQ-9 ($p < .01$) and K10 over time ($p < .001$)	High
Kelly and Carter (2015); Canada	41 adults (≥ 18 years) with binge eating disorder; 45 years; 82.93%	<ul style="list-style-type: none"> - IG: 3 weeks of self-help self-compassion exercises that involved an audio-guided PowerPoint slideshow for psychoeducation on development of a structured eating plan and self-compassion, practice of guided exercises (e.g., two self-compassion imagery exercises and compassionate letter writing to self), and instructions to cultivate a self-compassionate mindset through imagery, self-talk, and letter-writing over 3 weeks plus provision of a link to an online form for self-compassion practice (e.g., self-compassionate imagery visualization and compassionate letter writing to self) every evening before bed ($n = 15$) - CG1: 3 weeks of self-help behavioral strategies that involved an audio-guided PowerPoint slideshow for psychoeducation on development of a structured eating plan and behavioral activation, such as developing alternate activities with which to replace binge eating when urges arise and monitoring and reviewing strategies used when urges to binge arose over the 3 weeks ($n = 13$) - CG2: Waitlist control ($n = 13$) 	Depressive symptoms (CES-D); Pretest and posttest; No significant between group difference in CES-D over time	Unclear

Table 1 (continued)

Reference; Country	Participants; Mean age; Female (%)	Descriptions of intervention and comparison/control groups	Relevant outcomes (measures); Data collection time points; Relevant results (between-group differences over time only)	Overall RoB
Kelly et al. (2009); Canada	75 adults (≥ 18 years) who suffered from chronic facial acne and experienced significant acne-related distress (≥ 4 on the SKINDEX-16's emotion distress subscale); 22 years; 77.33%	<ul style="list-style-type: none"> - IG: A 2-week online self-help self-soothing intervention that involved a 1-hr PowerPoint session for the rationale, instructions, and exercises for self-compassionate imagery and self-talk (e.g., visualizing a self-compassionate image, writing a self-compassionate letter, and developing self-compassionate phrases) with daily self-help exercises for 2 weeks (e.g., repeating their compassionate self-statements three times per day while engaging in compassionate imagery) ($n = 23$) - CG1: A 2-week online attack-resisting intervention that involved a 1-hr PowerPoint session for the rationale, instructions, and exercises for resilient and retaliating imagery and self-talk exercise with daily self-help exercises for 2 weeks ($n = 26$) - CG2: TAU ($n = 24$) 	Depressive symptoms (BDI) and stress (SKINDEX-16); Pretest and posttest; CG1 > CG2 in BDI ($p < .01$), IG and CG1 > CG2 in SKINDEX-16 over time ($p < .01$)	Unclear
Kelman et al. (2018); USA & India	84 women (≥ 18 years) who were pregnant, became pregnant within the last year, and intend to become pregnant in the future (aged 18 to 54 years); NR; 100%	<ul style="list-style-type: none"> - IG: A 2-week internet-based compassionate mind training that involved a 45-min didactic course that introduced the course materials and audio meditations, delivered by email three times over the 2-week period (e.g., finding ourselves here in the flow of life and cultivating the compassionate self) ($n = 41$) - CG: A 2-week internet-based CBT that involved a 45-min didactic course that introduced the course materials (i.e., thoughts, activities, assertiveness, and sleep) and exercises for CBT delivered by email three times over the 2-week period ($n = 43$) 	Depressive symptoms (Depression subscale of the PHQ-4) and anxiety (Anxiety subscale of the PHQ-4); Pretest and posttest; IG > CG in outcomes over time ($p < .05$)	High
Krieger et al. (2019); Switzerland	122 adults (≥ 18 years) with increased levels of self-criticism (≥ 20 on the inadequate self subscale of the FSCRS; 37.69 years; 77.69%	<ul style="list-style-type: none"> - IG: 7 weekly modules (1 hr per module) of internet-delivered self-help self-compassion training (texts, audio files, and a diary function) that covered descriptions of self-compassion (e.g., common humanity, self-criticism vs. self-kindness, and over-identification vs. mindfulness) and exercises (e.g., mindfulness exercises, loving-kindness meditation, and self-compassionate writing) ($n = 60$) - CG: TAU ($n = 62$) 	Stress (DASS-21); Pretest and posttest; IG > CG in DASS-21 over time ($p < .01$)	Unclear
Lennard et al. (2021); Australia	248 mothers (≥ 18 years) of infants (< 2 years); 32.56 years; 100%	<ul style="list-style-type: none"> - IG: An 8-week online self-compassion intervention that involved two videos covering psychoeducation about self-compassion in the context of motherhood and a guided self-compassion visualization exercise with a downloadable tip sheet offering ideas for becoming more self-compassionate and SMS reminders ($n = 94$) - CG: Waitlist control ($n = 154$) 	Depressive symptoms (DASS-21-D), anxiety (DASS-21-A), and stress (DASS-21-S); Pretest and posttest; No significant between-group differences in outcomes over time	High

Table 1 (continued)

Reference; Country	Participants; Mean age; Female (%)	Descriptions of intervention and comparison/control groups	Relevant outcomes (measures); Data collection time points; Relevant results (between-group differences over time only)	Overall RoB
Maak et al. (2018); Hong Kong	2161 adults (> 18 years) who owned a mobile device and had consistent internet access; 33.64 years; 72.88%	<ul style="list-style-type: none"> - IG: 4 weekly modules (28 daily sessions, 10–15 min daily) of a mobile app-based self-compassion program that involved reading and graphic contents and audio-guided self-compassion exercises (e.g., compassionate body scan, affectionate breathing, loving-kindness meditation, compassionate walking, soften-allow-soothe, self-compassion break, and self-compassion journaling) ($n = 705$) - CG1: 4 weekly modules (28 daily sessions, 10–15 min daily) of a mobile app-based cognitive behavioral psychoeducation program that involved problem-solving skills, emotional management skills, cognitive strategies to tackle automatic negative thoughts associated with stress, audio-guided relaxation skills training (e.g., progressive muscle relaxation and imagery relaxation), and information and graphics about mental health, stress, and cognitive behavioral approach for mental health ($n = 753$) - CG2: 4 weekly modules (28 daily sessions, 10–15 min daily) of a mobile app-based mindfulness program that involved audio-guided mindfulness exercises (e.g., body scan, mindful breathing, mindful eating, mindful walking, and thought-distancing exercise) and readings and graphics to explain concepts of mindfulness ($n = 703$) 	Stress (K6); pretest, posttest, and 3-month F/U; No significant between group difference in K6 over time	High
Martínez-Borrás et al. (2022); Spain	40 employees of an automotive company; 41.93 years; 37.5%	<ul style="list-style-type: none"> - IG: 6 weekly in-person sessions (12 hr in total) of a group-based workplace mindfulness- and self-compassion-based intervention, involving meditation practices and psychoeducation to foster mindfulness and self-compassion to cope with work-related stress ($n = 20$) - CG: A 6-week, 3-session, in-person group-based workplace stress management program involving psychoeducation regarding work-related stress and coping strategies ($n = 20$) 	Stress (PSQ); Pretest and posttest; IG > CG in PSQ over time ($p < .05$)	High
Matos et al. (2017); Portugal	93 adults, including college students (78.5%); 23.34 years; 90.3%	<ul style="list-style-type: none"> - IG: A 2-week self-compassion program involving a 2-hr group session introducing concepts of self-compassion and compassionate mind training practices and audio files for 2-week independent practice (e.g., an imagery practice to develop a compassionate image of another mind that has caring intent toward the self) ($n = 56$) - CG: Waitlist control ($n = 37$) 	Depressive symptoms (DASS-21-D), anxiety (DASS-21-A), and stress (DASS-21-S); Pretest and posttest; IG > CG in DASS-21-S over time ($p < .05$)	High

Table 1 (continued)

Reference; Country	Participants; Mean age; Female (%)	Descriptions of intervention and comparison/control groups	Relevant outcomes (measures); Data collection time points; Relevant results (between-group differences over time only)	Overall RoB
Matos et al. (2022); Portugal	155 public school teachers; 51.35 years; 92.9%	<ul style="list-style-type: none"> - IG: 8 weekly sessions (2.5 hr per session) of a group-based compassionate mind training program for teachers aiming to cultivate a compassionate self by using psychoeducation and self-compassion practices (e.g., cultivating the ideal compassionate self, self-compassion break, and mindful breathing) ($n = 80$) - CG: Waitlist control ($n = 75$) 	Depressive symptoms (DASS-21-D), anxiety (DASS-21-A), and stress (DASS-21-S); Pretest, posttest, and 3-month F/U; No significant between group differences in outcomes over time	High
Mifsud et al. (2021); Australia	79 breast cancer survivors (≥ 18 years) who reported at least one negative event related to the changes that occurred to their body after breast cancer; 58.6 years; 100%	<ul style="list-style-type: none"> - IG: A 3-week web-based self-compassion training that included a 30-min self-compassion focused writing activity (e.g., writing a self-compassionate letter to self) to address three components of self-compassion and listening to a 5-min self-compassion based audio meditation each day for 3 weeks with a daily SMS reminder ($n = 17$) - CG1: A web-based 30-min expressive writing activity about a challenging body image experience, including event details, thoughts, and feelings ($n = 23$) - CG2: A web-based 30-min self-compassion focused writing activity, including writing a self-compassionate letter to self, to address three components of self-compassion ($n = 39$) 	Depressive symptoms (DASS-21-D), anxiety (DASS-21-A), and stress (DASS-21-S); Pretest and posttest; No significant between group differences in outcomes over time	Low
Nadeau et al. (2021); USA	57 women; 38.12 years; 100%	<ul style="list-style-type: none"> - IG: A 10-week online self-guided self-compassion course that involved video-recorded psychoeducational lectures, an interview with a prominent expert in the field, guided experiential exercises, case interviews, and homework ($n = 25$) - CG: Waitlist control ($n = 32$) 	Depressive symptoms (CES-D) and anxiety (GAD-7); Pretest, posttest, and 1-month F/U; No significant between group differences in outcomes over time	High
Navab et al. (2019); Iran	20 mothers (aged 20 to 40 years) of children with ADHD; 30.65 years; 100%	<ul style="list-style-type: none"> - IG: 8 weekly sessions (1.5 hr per session) of a self-compassion-based program that included understanding the differences between self-compassion and self-pity, mindfulness training, developing warmth and kindness toward oneself, practicing affectionate self-image, and writing a self-compassionate letter ($n = 10$) - CG: Waitlist control ($n = 10$) 	Depressive symptoms (DASS-21-D), anxiety (DASS-21-A), and stress (DASS-21-S); Pretest and posttest; IG > CG in DASS-21-D and DASS-21-A over time ($p \leq .01$)	High
Neff and Germer (2013); USA	51 adults (77% with a graduate degree; 76% with prior meditation experience); 50.16 years; 80%	<ul style="list-style-type: none"> - IG: 8 weekly sessions (2 hr per session) of a group-based mindful self-compassion program that involved an introduction to self-compassion and mindfulness, application of self-compassion in daily life, development of a compassionate inner voice, the importance of value-focused living, skills training for difficult emotions and challenging relationships, and how to relate to positive aspects of oneself and one's life with appreciation, with a half-day retreat for mindfulness training between session 4 and 5 ($n = 24$) - CG: Waitlist control ($n = 27$) 	Depressive symptoms (BDI), anxiety (STAI), and stress (PSS); Pretest and posttest; IG > CG in BDI and STAI ($p < .01$) and in PSS overtime ($p < .05$)	High

Table 1 (continued)

Reference; Country	Participants; Mean age; Female (%)	Descriptions of intervention and comparison/control groups	Relevant outcomes (measures); Data collection time points; Relevant results (between-group differences over time only)	Overall RoB
Noorbala et al. (2013); Iran	19 female adults (aged between 20 and 40 years) with diagnosis of MDD and BDI \geq 20; 28.15 years; 100%	<ul style="list-style-type: none"> - IG: 12 sessions (2 hr per session, two sessions per week) of a group-based mindful self-compassion training delivered for 6 weeks that involved introducing concepts of self-compassion, exploring the way they thought about themselves and how they behave toward themselves, and exercises (e.g., compassionate imagery, soothing breathing rhythm, mindfulness, and compassionate letter writing) ($n=9$) - CG: TAU ($n=10$) 	Depressive symptoms (BDI-II) and anxiety (AS); pretest, posttest, and 2-month F/U; IG > CG in outcomes over time ($p < .05$)	High
Preuss et al. (2021); Germany	217 parents (\geq 18 years) of at least one child aged 3 to 18 years who had mild depression and stress based on DASS-21 at baseline; 40.63 years; 92.6%	<ul style="list-style-type: none"> - IG: Two online video sessions (a 20-min video session on Day 1 and a 10-min video session on Day 3) of a self-compassion program that involved psychoeducation about possible psychological consequences of pandemic restrictions and the practice of mindfulness (i.e., by naming their burdening emotions and acknowledging their suffering and distress), common humanity (i.e., by internalizing this stressful family moment as a shared human experience of suffering during the pandemic), and self-kindness (i.e., by expressing a kind, warm, and soothing self-talk while strengthening their self-esteem in the parental role), with three email reminders to transfer the application of strategies to daily family life (Days 2, 4, 5) ($n=75$) - CG1: Two online video sessions (same length and format as the IG) of a cognitive reappraisal program that involved psychoeducation and practice of cognitive restructuring techniques, with three email reminders to transfer the application of strategies to daily family life (Days 2, 4, 5) ($n=73$) - CG2: Waitlist control ($n=69$) 	Stress (PSS); Pretest and posttest (1 week); IG and CG1 > CG2 in PSS over time ($p < .001$)	High
Sajjadi et al. (2022); Iran	47 young adults (aged between 18 to 25 years) with a history of childhood maltreatment; NR; 57%	<ul style="list-style-type: none"> - IG: 8 weekly sessions (2 hr per session) of a group-based mindful self-compassion program covering the definition of self-compassion and mindfulness with practices (e.g., soothing touch, affectionate breathing, and compassionate letter to myself) ($n=24$) - CG: TAU ($n=23$) 	Depressive symptoms (DASS-21-D), anxiety (DASS-21-A), and stress (DASS-21-S); Pretest, posttest, and 2-month F/U; IG > CG in outcomes over time ($p < .01$)	Unclear
Savari et al. (2021); Iran	30 female students (aged between 20 and 30 years) with a diagnosis of major depression confirmed by the SCID-I for DSM-V and by scores at least in the moderate range on the BDI-II total score (> 20); 24.3 years; 100%	<ul style="list-style-type: none"> - IG: 8 sessions (1.5 hr per session, twice a week) of a group-based self-compassion program that involved psychoeducation about self-compassion, practice of self-compassion exercises (e.g., compassionate self-imagery and compassionate letter writing), and homework assignments ($n=15$) - CG: Waitlist control ($n=15$) 	Depressive symptoms (BDI-II); Pretest and posttest; IG > CG in BDI-II over time ($p < .01$)	Unclear

Table 1 (continued)

Reference; Country	Participants; Mean age; Female (%)	Descriptions of intervention and comparison/control groups	Relevant outcomes (measures); Data collection time points; Relevant results (between-group differences over time only)	Overall RoB
Schnepper et al. (2020); Austria and Germany	57 people who wanted to lose weight or develop a healthier eating behavior; 29 years; 84.21%	<ul style="list-style-type: none"> - IG: A 14-day self-compassion mobile app intervention that involved daily notifications for daily self-compassion exercises (e.g., compassionate breathing exercises, soothing touch, writing a self-compassionate letter, and journaling exercises) ($n=28$) - CG: Waitlist control ($n=29$) 	Stress (PSS); Pretest and posttest; IG > CG in PSS over time ($p < .05$)	High
Schuling et al. (2020); the Netherlands	122 adults (≥ 18 years) who had been diagnosed with recurrent depressive disorder and had previously participated in an MBCT course (≥ 4 sessions, at least 1 year prior to this study); 55.6 years; 74.6%	<ul style="list-style-type: none"> - IG: 8 sessions (2.5 hr per session, once every 2 weeks) of a group-based MBCL program that involved self-compassion exercises (e.g., compassionate breathing space, compassionate body scan, and soften-soothe-allow; compassion for self), group inquiry, didactic and interactive teaching, and CDs provided for 30-min daily home practice ($n=61$) - CG: TAU ($n=61$) 	Depressive symptoms (BDI-II); Pretest and posttest (at 4 months after pretest); IG > CG in BDI-II over time ($p < .05$)	High
Seekis et al. (2020); Australia	76 undergraduate women with high levels of body concerns (≥ 12 on the DT and ≥ 19 on the Body Dissatisfaction Subscale from the EDI-3); 18.04 years; 100%	<ul style="list-style-type: none"> - IG: A 50-min in-person group-based mindful self-compassion workshop (i.e., psychoeducation on self-compassion, two brief writing exercise for a self-compassionate mindset, and practice of compassionate body scan) and a 2-week online group discussion (i.e., use of self-compassion techniques when experiencing appearance distress and posting about their experiences on a private Facebook group three times per week for 2 weeks) ($n=42$) - CG: Waitlist control ($n=34$) 	Anxiety (SAAS); Pretest, posttest, 1-month F/U, and 3-month F/U; No significant between group difference in SAAS over time	Unclear
Shahar et al. (2015); Israel	38 adults (aged 18 to 65 years) with high levels of self-criticism (≥ 30 on the SCP subscale of the DAS); 30.62 years; 60.53%	<ul style="list-style-type: none"> - IG: 7 weekly sessions (1.5 hr per session) of a group-based loving-kindness meditation program involving self-compassion practices and group discussions and provision of CDs of guided meditations for daily home practice ($n=19$) - CG: Waitlist control ($n=19$) 	Depressive symptoms (DASS-21-D), anxiety (DASS-21-A), and stress (DASS-21-S); Pretest, posttest, and 3-month F/U; IG > CG in DASS-21-D over time ($p < .05$)	Unclear
Shapira and Mongrain (2010); Canada	1002 adults (aged 18 to 72 years) who had moderate levels of depressive symptoms as measured by the CES-D; 34 years; 81.54%	<ul style="list-style-type: none"> - IG: 1-week online daily exercises for self-compassion that involved thinking about a distressing event that occurred that day and writing a self-compassionate letter ($n=63$) - CG1: 1-week online daily exercises for optimistic thinking that involved visualizing and writing a letter about a future in which current issues were resolved and giving themselves advice on how to get there ($n=55$) - CG2: writing freely about an early memory daily online for 1 week ($n=70$) 	Depressive symptoms (CES-D); Pretest, posttest, 1-month F/U, 3-month F/U, and 6-month F/U; IG and CG1 > CG2 in CES-D over time ($p < .05$)	High

Table 1 (continued)

Reference; Country	Participants; Mean age; Female (%)	Descriptions of intervention and comparison/control groups	Relevant outcomes (measures); Data collection time points; Relevant results (between-group differences over time only)	Overall RoB
Sommers-Spijkerman et al. (2018); the Netherlands	242 adults (≥ 18 years) with low to moderate levels of well-being, as determined by the MHC-SF; 52.87 years; 74.8	<ul style="list-style-type: none"> - IG: 7 weekly modules of a guided self-help compassion program with self-compassion as the primary focus over a 9-week period that involved psychoeducational information on an important aspect of self-compassion and experiential exercises with audio guided recordings (e.g., mindful breathing, keeping a diary of self-critical thoughts, and visualizing one's ideal compassionate self) with weekly email guidance ($n = 120$) - CG: Waitlist control ($n = 122$) 	Depressive symptoms (HADS-D), anxiety (HADS-A), and stress (PSS); Pretest, posttest, and 3-month F/U; IG > CG in outcomes over time ($p < .001$)	Unclear
Stevenson et al. (2019); Australia	119 adults (≥ 18 years) with elevated levels of social anxiety (≥ 19 on the SPIN); 29.04 years; 76.5%	<ul style="list-style-type: none"> - IG: A 14-day online daily self-compassion exercise program that included writing a self-compassionate letter ($n = 60$) - CG: A 14-day online daily cognitive restructuring program that included identifying a recent social situation causing social anxiety, negative automatic thoughts experienced during or after the situation evidence, and an alternative evaluation of the situation ($n = 59$) 	Depressive symptoms (DASS-21-D) and anxiety (SPS); Pretest, posttest, 1-week F/U, and 5-week F/U; No significant between group differences in outcomes over time	Unclear
Teale Sapach et al. (2023); Canada	59 adults (≥ 18 years) with a primary diagnosis of social anxiety disorder; 34.3 years; 67.8%	<ul style="list-style-type: none"> - IG: 6 weekly sessions of a web-based, audio-guided self-compassion training program that covered psychoeducation about self-compassion and self-compassion practice exercises ($n = 20$) - CG1: 6 weekly sessions of a text-based self-guided applied relaxation training that covered progressive muscle relaxation, cue-controlled relaxation, rapid relaxation, and applied relaxation in anxiety-provoking situations ($n = 19$) - CG2: Waitlist control ($n = 20$) 	Anxiety (LSAS-SR); Pretest, posttest, and 3 month F/U; IG > CG2 in LSAS-SR over time ($p < .05$) & IG = CG1	High
Torrijos-Zarceo et al. (2021); Spain	123 adults (≥ 18 years) with chronic pain who had a score ≥ 8 on the HADS-A and/or HADS-D and was diagnosed with adjustment disorder, dysthymia or MDD according to the DSM-V; 48.76 years; 87.8%	<ul style="list-style-type: none"> - IG: 8 weekly sessions (2.5 hr per session) of a group-based mindful self-compassion program that involved psychoeducation on self-compassion and self-compassion practices (e.g., affectionate breathing, loving-kindness meditation, self-compassionate letter writing, and self-appreciation exercise) ($n = 62$) - CG: 8 weekly sessions (2.5 hr per session) of group-based CBT that involved psychoeducation about chronic pain and the relationship among thoughts, emotions, and physical reactions; relaxation and breathing techniques; cognitive restructuring; behavioral activation; and paced physical activity to prevent pain ($n = 61$) 	Depressive symptoms (HADS-D) and anxiety (HADS-A); Pretest and posttest; IG > CG in HADS-A over time ($p < .05$)	High

Table 1 (continued)

Reference; Country	Participants; Mean age; Female (%)	Descriptions of intervention and comparison/control groups	Relevant outcomes (measures); Data collection time points; Relevant results (between-group differences over time only)	Overall RoB
Urken and LeCroy (2021); USA	203 English-speaking adults (≥ 18 years) with a diagnosis of mental disorders (i.e., MDD, bipolar disorder, schizophrenia, or schizoaffective disorder)—85% MDD; 34.59 years; 72.9%	<ul style="list-style-type: none"> - IG: A 3-day online self-compassion writing intervention that involved writing with self-compassion prompts focused on three components of self-compassion (i.e., mindfulness, common humanity, and self-kindness) daily for 15 min for 3 days (e.g., writing a self-compassionate letter) ($n = 101$) - CG: Writing about how they spent their time leaving out emotions with writing prompts daily for 3 days online ($n = 102$) 	Depressive symptoms (RDQ); Pretest, posttest (after the 3-day intervention), and 1-month F/U; No significant between group difference in RDQ over time	High
Weibel et al. (2017); USA	71 undergraduate students; 19.1 years; 77%	<ul style="list-style-type: none"> - IG: 4 weekly sessions (1.5 hr per session) of a group-based loving-kindness meditation program that included psychoeducation, loving-kindness meditation practice, and group discussion ($n = 38$) - CG: Waitlist control ($n = 33$) 	Anxiety (STAI); Pretest, posttest, and 8-week F/U; No significant between group difference in STAI over time	High
Williamson (2020); USA	129 students; 19.43 years; 69.77%	<ul style="list-style-type: none"> - IG: One in-person self-compassion training session (i.e., psychoeducation about self-compassion and interactive exercises involving scenarios) and 10-min daily practice of self-compassion for 3 weeks (e.g., engaging in positive, soothing, self-compassionate self-talk in stressful situations, mindfulness practice, and practicing self-kindness by saying words of comfort to themselves) ($n = 44$) - CG1: Time management that involved one in-person meeting and time management practice for 3 weeks (i.e., creating to-do lists of tasks and writing down completed tasks in their activity log and a brief description of how they felt about completing the task) ($n = 47$) - CG2: TAU ($n = 38$) 	Depressive symptoms (ZSDS) and stress (PSS); Pretest and posttest; No significant between group differences in outcomes over time	High
Wong and Mak (2016); Hong Kong	65 university students; 20.5 years; 53.85%	<ul style="list-style-type: none"> - IG: Web-based self-compassion writing on 3 consecutive days that involved writing about a recent painful/negative event or any time that they had judged themselves, and then using an accepting and self-compassionate attitude to process the experience provided with three self-compassion prompts ($n = 33$) - CG: Web-based control writing according to the instruction on 3 consecutive days that involved writing about daily activities in a factual and unemotional manner ($n = 32$) 	Depressive symptoms (CES-D); Pretest, posttest (1 month F/U), and 3-month F/U; No significant between group difference in CES-D over time	High
Woodfin et al., (2021); Norway	89 university students; 27 years; 78.4%	<ul style="list-style-type: none"> - IG: A 3-week group-based self-compassion program that involved 4 weekly seminars (3 hr per seminar) and a silent retreat (4 hr) and that covered short lectures regarding self-compassion, short guided self-compassion and mindfulness exercises (e.g., affectionate breathing, self-compassion break, and loving-kindness for ourselves), and group discussions ($n = NR$) - CG: Waitlist control ($n = NR$) 	Depressive symptoms (MDI) and anxiety (STAI); Pretest and posttest; IG > CG in outcomes over time ($p < .01$)	High

Table 1 (continued)

Reference; Country	Participants; Mean age; Female (%)	Descriptions of intervention and comparison/control groups	Relevant outcomes (measures); Data collection time points; Relevant results (between-group differences over time only)	Overall RoB
Yadavaia et al. (2014); USA	73 undergraduate students (≥ 18 years) who had low self-compassion (a score on the SCS below the mean score for undergraduates) and high psychological distress (≥ 10 on the GHQ); 20.37 years; 74%	<ul style="list-style-type: none"> IG: A 6-hr ACT-based workshop targeting self-compassion that focused on weakening fusion with self-criticism and self-conceptualizations, building self-perspective-taking and self-assertion, and strengthening a value of self-kindness through self-acceptance with experiential exercises for self-compassion ($n = 30$) CG: Waitlist control ($n = 43$) 	<p>Depressive symptoms (DASS-21-D), anxiety (DASS-21-A), and stress (DASS-21-S); Pretest, posttest (at 1 or 2 weeks), and 2-month F/U; IG > CG in DASS-21-D and DASS-21-A over time ($p < .05$)</p>	Unclear
Zheng et al. (2022); China	40 adult (≥ 18 years) with nonspecific chronic low back pain; 35.2 years; 75.7%	<ul style="list-style-type: none"> IG: A 4-week self-compassion training, which involved 4 in-person group sessions (2 hr per session) with home practice for psychoeducation about self-compassion and guided self-compassion practices (e.g., affectionate breathing meditation, self-compassion touch, self-compassion writing, and loving kindness meditation for ourselves), combined with core stability exercise (the same exercise condition of CG) ($n = 20$) CG: A 4-week core stability exercise program that involved 4 weekly in-person sessions (1.5 hr per session), self-help exercise at home (30–40 min per session, at least 3 times per week), and completion of an electronic daily training diary ($n = 20$) 	<p>Depressive symptoms (PHQ-9) and anxiety (GAD-7); Pretest, posttest, and 3-month F/U; IG > CG in GAD-7 over time ($p < .05$)</p>	Low

Abbreviations: ADHD, attention-deficit/hyperactivity disorder; AS, Anxiety Scale; BDI, Beck Depression Inventory; CBT, cognitive behavioral therapy; CES-D, Center for Epidemiologic Studies Depression Scale; CG, comparison or control group; DAS, Dysfunctional Attitude Scale; DASS-21-A, Anxiety Subscale of the Depression, Anxiety and Stress Scale—21 Items; DASS-21-D, Depression Subscale of the Depression, Anxiety and Stress Scale—21 Items; DASS-21-S, Stress Subscale of the Depression, Anxiety and Stress Scale—21 Items; DDS, Diabetes Distress Scale; DEPS-R, Diabetes Eating Problem Survey Revised; DSM-V, Diagnostic and Statistical Manual of Mental Disorders, Fifth Edition; DT, Drive for Thinness Scale; EDI-3, Eating Disorder Inventory-3; EPDS, Edinburgh Postnatal Depression Scale; FSCRS, Forms of Self-Criticizing/Attacking and Self-Reassuring Scale; F/U, follow-up; GAD-7, Generalized Anxiety Disorder—7; GHQ, General Health Questionnaire; HADS-A, Anxiety Subscale of the Hospital Anxiety and Depression Scale; HADS-D, Depression Subscale of the Hospital Anxiety and Depression Scale; IG, intervention group; KADS, Kutcher Adolescent Depression Scale; K6, 6-item Kessler Psychological Distress Scale; K10, 10-item Kessler Psychological Distress Scale; LSAS-SR, Liebowitz Social Anxiety Scale—Self-Report Version; MADRS, Montgomery-Asberg Depression Rating Scale; MBCL, mindfulness-based compassionate living; MBCT, mindfulness-based cognitive therapy; MBSR, mindfulness-based stress reduction; MDD, major depressive disorder; MDI, Major Depression Inventory; MHC-SF, Mental Health Continuum-Short Form; NR, not reported; PCL-S, PTSD Checklist-Specific Stressor Version; PHQ-4, Patient Health Questionnaire—4; PHQ-9, Patient Health Questionnaire—9; PSI, Parenting Stress Index; PSQ, Perceived Stress Questionnaire; PSS, Perceived Stress Scale; PTSD, post-traumatic stress disorder; RDQ, Remission from Depression Questionnaire; RoB, risk of bias; SAAS, Social Appearance Anxiety Scale; SCID-I, Structured Clinical Interview for DSM Axis I Disorders; SCP, self-critical perfectionism; SCS, Self-Compassion Scale; SMFQ, Short Mood and Feelings Questionnaire; SMS, Short Message Service; SPIN, Social Phobia Inventory; SPS, Social Phobia Scale; STAI, Spielberger State-Trait Anxiety Inventory; TAU, treatment as usual; ZSDS; Zung Self-Rating Depression Scale

Rönnlund, 2020; Kelly & Carter, 2015; Kelly et al., 2009; Kelman et al., 2018; Krieger et al., 2019; Lennard et al., 2021; Mifsud et al., 2021; Nadeau et al., 2021; Preuss et al., 2021; Shapira & Mongrain, 2010; Stevenson et al., 2019; Teale Sapach et al., 2023; Urken & LeCroy, 2021; Wong & Mak, 2016) and three studies administered interventions via a smartphone app (Al-Refae et al., 2021; Mak et al., 2018; Schnepfer et al., 2020). Two studies involved self-compassion interventions that used self-help workbooks (Held & Owens, 2015; Sommers-Spijkerman et al., 2018). The remaining three studies involved one in-person session accompanied by another delivery mode, including one in-person session with daily practice for 2 to 3 weeks in two studies (Matos et al., 2017; Williamson, 2020) and one in-person group-based workshop with online group discussions for 2 weeks in one study (Seekis et al., 2020).

Self-compassion interventions were delivered over an average of 5.1 weeks ($SD=3.2$), ranging from 1 to 16 weeks. Self-compassion interventions of the included studies typically involved: psychoeducation about self-compassion and its three components (i.e., self-kindness, common humanity, and mindfulness); mindfulness practice (e.g., compassionate body scan); self-compassionate letter writing (i.e., writing a compassionate letter to self); visualizing a self-compassionate image (e.g., an imagery practice to develop a compassionate image of another mind that has caring intent toward the self); and daily self-compassion practice with audio guided recordings.

The average sample size for participants in the included RCTs was 156 ($SD=310$), ranging from 19 to 2,161. The mean age of participants was 33.3 years ($SD=11.4$), ranging from 13.9 years to 58.6 years. Two studies involved adolescents only (Bluth et al., 2016; Boggiss et al., 2020) while the remaining 54 studies involved adult populations. The average percentage of female participants was 77.8% ($SD=19.4$), ranging from 0 to 100%. A total of 11 studies involved female participants only (Fernandes et al., 2022; Gammer et al., 2020; Guo et al., 2020; Kelman et al., 2018; Lennard et al., 2021; Mifsud et al., 2021; Nadeau et al., 2021; Navab et al., 2019; Noorbala et al., 2013; Savari et al., 2021; Seekis et al., 2020) while one study involved male participants only (Held & Owens, 2015). Of the 56 studies, 20 studies directly targeted people who reported psychological distress symptoms, such as depressive symptoms, anxiety, and stress (Anuwatgasem et al., 2020; Beshai et al., 2020; Bluth et al., 2016; Căndea & Szentágotai-Tătar, 2018; Collado-Navarro et al., 2021; DeTore et al., 2022; Fernandes et al., 2022; Guo et al., 2020; Javidi et al., 2021; Kelly et al., 2009; Noorbala et al., 2013; Preuss et al., 2021; Savari et al., 2021; Schuling et al., 2020; Shapira & Mongrain, 2010; Stevenson et al., 2019; Teale Sapach et al., 2023; Torrijos-Zarcelero et al., 2021; Urken & LeCroy, 2021; Yadavaia et al., 2014). Two studies directly targeted individuals with low

levels of self-compassion (Arimitsu, 2016; Yadavaia et al., 2014), and two studies directly targeted adults with high levels of self-criticism (Krieger et al., 2019; Shahr et al., 2015).

Thirty-one studies involved passive control groups with no intervention only, 16 involved active control groups provided with other comparable interventions only, and the remaining nine studies involved both active control groups and passive control groups. The included RCTs were conducted in the USA (11 studies), Australia (five studies), Canada (five studies), China (five studies), Iran (four studies), the UK (three studies), Norway (three studies), Spain (three studies), Portugal (three studies), New Zealand (two studies), the Netherlands (two studies), Sweden (two studies), Germany (two studies), Switzerland (one study), Ireland (one study), Romania (one study), Israel (one study), Japan (one study), and Thailand (one study). Six studies were published between 2009 and 2014, 10 studies were published between 2015 and 2017, and 40 studies were published between 2018 and January, 2023.

The following section describes results of meta-analysis regarding the effects of self-compassion interventions on depressive symptoms, anxiety, and stress at the immediate posttest and follow-up, with findings of subgroup analyses grouped according to the type of control groups (i.e., Subgroup 1: self-compassion intervention groups vs. active control groups; Subgroup 2: self-compassion intervention groups vs. passive control groups), when applicable.

Effects of Self-Compassion Interventions on Reducing Depressive Symptoms

A meta-analysis of 36 RCTs ($N=2,960$ participants) showed self-compassion interventions had a medium effect on reducing depressive symptoms at the immediate posttest compared to control groups overall ($SMD=0.44$, 95% $CI=[0.31, 0.57]$; Fig. 2). There was a significant subgroup difference at the immediate posttest ($\chi^2=4.89$, $p=0.03$), indicating the effects of the two subgroups (i.e., Subgroup 1: self-compassion intervention groups vs. active control groups; Subgroup 2: self-compassion intervention groups vs. passive control groups) at the immediate posttest were statistically different from one another. Self-compassion interventions had a medium effect compared to passive control groups at the immediate posttest (26 RCTs, $N=2,082$ participants; $SMD=0.53$, 95% $CI=[0.39, 0.67]$) while self-compassion interventions were not different from active control groups (10 RCTs, 878 participants; $SMD=0.20$, 95% $CI=[-0.05, 0.45]$).

A meta-analysis of 14 RCTs with follow-up data ($N=1,261$ participants) revealed self-compassion interventions had a small effect on reducing depressive symptoms at follow-up compared to control groups overall ($SMD=0.38$, 95% $CI=[0.14, 0.61]$; Fig. 3). There was a significant

subgroup difference at follow-up ($\text{Chi}^2 = 14.10$, $p < 0.001$), indicating the effects of the two subgroups (i.e., Subgroup 1: self-compassion intervention groups vs. active control groups; Subgroup 2: self-compassion intervention groups vs. passive control groups) at follow-up were statistically different from one another. Self-compassion interventions had a medium effect compared to passive control groups at follow-up (10 RCTs, $N = 793$ participants; $\text{SMD} = 0.58$, $95\% \text{ CI} = [0.37, 0.79]$), but self-compassion interventions were not different from active control groups (four RCTs, $N = 468$ participants; $\text{SMD} = -0.12$, $95\% \text{ CI} = [-0.42, 0.18]$).

Effects of Self-Compassion Interventions on Reducing Anxiety

A meta-analysis of 31 RCTs ($N = 2,508$ participants) revealed self-compassion interventions had a small effect on reducing anxiety at the immediate posttest compared to control groups overall ($\text{SMD} = 0.36$, $95\% \text{ CI} = [0.16, 0.55]$; Fig. 4). There was no significant subgroup difference at the immediate posttest ($\text{Chi}^2 = 2.26$, $p = 0.13$), indicating the effects of the two subgroups (i.e., Subgroup 1: self-compassion intervention groups vs. active control groups; Subgroup 2: self-compassion intervention groups vs. passive control groups) at the immediate posttest were not statistically different from one another. Self-compassion interventions had a medium effect compared to passive control groups at the immediate posttest (22 RCTs, $N = 1,898$ participants; $\text{SMD} = 0.46$, $95\% \text{ CI} = [0.29, 0.64]$) while self-compassion interventions were not different from active control groups (nine RCTs, 610 participants; $\text{SMD} = 0.01$, $95\% \text{ CI} = [-0.54, 0.57]$).

A meta-analysis of 14 RCTs with follow-up data ($N = 1,092$ participants) showed self-compassion interventions were not significantly different from control groups overall in reducing anxiety at follow-up ($\text{SMD} = 0.13$, $95\% \text{ CI} = [-0.27, 0.52]$; Fig. 5). There was a significant subgroup difference at follow-up ($\text{Chi}^2 = 3.84$, $p = 0.05$), indicating the effects of the two subgroups (i.e., Subgroup 1: self-compassion intervention groups vs. active control groups; Subgroup 2: self-compassion intervention groups vs. passive control groups) at follow-up were statistically different from one another. While self-compassion interventions were not different from active control groups at follow-up (three RCTs, $N = 229$ participants; $\text{SMD} = -1.13$, $95\% \text{ CI} = [-2.67, 0.42]$), self-compassion interventions had a medium effect compared to passive control groups at follow-up (11 RCTs, $N = 863$ participants; $\text{SMD} = 0.42$, $95\% \text{ CI} = [0.26, 0.58]$).

Effects of Self-Compassion Interventions on Reducing Stress

A meta-analysis of 30 RCTs ($N = 4,020$ participants) showed self-compassion interventions had a medium effect on

reducing stress at the immediate posttest compared to control groups overall ($\text{SMD} = 0.43$, $95\% \text{ CI} = [0.31, 0.56]$; Fig. 6). There was no significant subgroup difference at the immediate posttest ($\text{Chi}^2 = 3.46$, $p = 0.06$), indicating the effects of the two subgroups (i.e., Subgroup 1: self-compassion intervention groups vs. active control groups; Subgroup 2: self-compassion intervention groups vs. passive control groups) at the immediate posttest were not statistically different from one another. Self-compassion interventions had a medium effect compared to passive control groups at the immediate posttest (21 RCTs, $N = 2,099$ participants; $\text{SMD} = 0.50$, $95\% \text{ CI} = [0.37, 0.63]$) while self-compassion interventions were not different from active control groups (nine RCTs, 1,921 participants; $\text{SMD} = 0.22$, $95\% \text{ CI} = [-0.04, 0.48]$).

A meta-analysis of nine RCTs with follow-up data ($N = 2,403$ participants) revealed self-compassion interventions had a small effect on reducing stress at follow-up compared to control groups overall ($\text{SMD} = 0.23$, $95\% \text{ CI} = [0.06, 0.40]$; Fig. 7). There was a significant subgroup difference at follow-up ($\text{Chi}^2 = 8.04$, $p = 0.005$), indicating the effects of the two subgroups (i.e., Subgroup 1: self-compassion intervention groups vs. active control groups; Subgroup 2: self-compassion intervention groups vs. passive control groups) at follow-up were statistically different from one another. Self-compassion interventions had a small effect compared to passive control groups at follow-up (eight RCTs, $N = 945$ participants; $\text{SMD} = 0.28$, $95\% \text{ CI} = [0.12, 0.45]$), but self-compassion interventions were not different from active control groups (one RCT, $N = 1,458$ participants; $\text{SMD} = 0.00$, $95\% \text{ CI} = [-0.10, 0.10]$).

Subgroup Analyses According to the Intervention Delivery Modes

In-person self-compassion interventions showed medium effects on reducing depressive symptoms at the immediate posttest (23 studies that involved 1,390 participants, $\text{SMD} = 0.57$, $95\% \text{ CI} = [0.39, 0.75]$) and at follow-up (eight studies that involved 447 participants, $\text{SMD} = 0.53$, $95\% \text{ CI} = [0.12, 0.94]$), reducing anxiety at the immediate posttest (20 studies that involved 1,178 participants, $\text{SMD} = 0.40$, $95\% \text{ CI} = [0.13, 0.66]$), and reducing stress at the immediate posttest (16 studies that involved 869 participants, $\text{SMD} = 0.50$, $95\% \text{ CI} = [0.29, 0.71]$) and at follow-up (five studies that involved 291 participants, $\text{SMD} = 0.46$, $95\% \text{ CI} = [0.20, 0.72]$). There was no statistically significant difference of in-person self-compassion interventions from control groups in reducing anxiety at follow-up (nine studies that involved 517 participants, $\text{SMD} = 0.13$, $95\% \text{ CI} = [-0.55, 0.80]$).

However, online self-compassion interventions demonstrated small effects on reducing depressive symptoms (12

studies that involved 1,328 participants, $SMD = 0.24$, 95% $CI = [0.06, 0.42]$) and stress (12 studies that involved 2,882 participants, $SMD = 0.39$, 95% $CI = [0.23, 0.56]$) at the immediate posttest only. There was no statistically significant difference of online self-compassion interventions from control groups in reducing depressive symptoms at follow-up (five studies that involved 572 participants, $SMD = 0.20$, 95% $CI = [-0.13, 0.52]$); anxiety at the immediate posttest (ten studies that involved 1,088 participants, $SMD = 0.28$, 95% $CI = [-0.05, 0.62]$); anxiety at follow-up (four studies that involved 333 participants, $SMD = 0.03$, 95% $CI = [-0.42, 0.47]$); and stress at follow-up (three studies that involved 1,870 participants, $SMD = 0.02$, 95% $CI = [-0.07, 0.11]$).

There was no statistically significant subgroup difference in all outcomes ($p > 0.05$) except for depressive symptoms at the immediate posttest ($\chi^2 = 6.24$, $p = 0.01$) and stress at follow-up ($\chi^2 = 9.91$, $p = 0.002$). In other words, there was no statistically significant difference in depressive symptoms at follow-up, anxiety at the immediate posttest and follow-up, and stress at the immediate posttest among studies according to the intervention delivery modes (i.e., in-person self-compassion interventions and online self-compassion interventions). However, there was a statistically significant subgroup difference in depressive symptoms at the immediate posttest (i.e., medium effects of in-person self-compassion interventions and small effects of online self-compassion interventions compared to control groups) and stress at follow-up (medium effects of in-person self-compassion interventions and no significant effect of online self-compassion interventions compared to control groups) among studies according to the delivery modes. Forest plots of subgroup analyses according to the intervention delivery modes are illustrated in Supplemental Materials (Figures S1 – S6).

Subgroup Analyses According to the Involvement of Targeted Participants with Psychological Distress Symptoms

Subgroup analyses found medium effects of self-compassion interventions on reducing depressive symptoms (12 studies that involved 1,021 participants, $SMD = 0.56$, 95% $CI = [0.28, 0.85]$) and stress (12 studies that involved 1,060 participants, $SMD = 0.64$, 95% $CI = [0.43, 0.85]$) at the immediate posttest and a small effect on reducing stress at follow-up (three studies that involved 399 participants, $SMD = 0.35$, 95% $CI = [0.02, 0.69]$) compared to control groups when studies directly targeted participants with psychological distress symptoms. Self-compassion intervention groups did not statistically differ from control groups in the other outcomes (i.e., depressive symptoms at follow-up and anxiety at the immediate posttest and follow-up) when studies directly targeted participants with psychological distress symptoms.

On the other hand, subgroup analyses showed small effects of self-compassion interventions on depressive symptoms at the immediate posttest (24 studies that involved 1,939 participants, $SMD = 0.39$, 95% $CI = [0.24, 0.53]$) and stress at the immediate posttest (18 studies that involved 2,960 participants, $SMD = 0.31$, 95% $CI = [0.17, 0.45]$) and medium effects of self-compassion interventions on depressive symptoms at follow-up (ten studies that involved 824 participants, $SMD = 0.40$, 95% $CI = [0.10, 0.69]$) and anxiety at the immediate posttest (22 studies that involved 1,838 participants, $SMD = 0.40$, 95% $CI = [0.19, 0.62]$) compared to control groups when studies did not directly target participants with some type of psychological distress. However, there was no statistically significant difference of self-compassion interventions from control groups in reducing anxiety and stress at follow-up when studies did not directly target participants with some type of psychological distress.

There was no statistically significant subgroup difference in all the outcomes ($p > 0.05$), except for stress at the immediate posttest ($\chi^2 = 6.96$, $p = 0.008$). This indicates that there was no statistically significant difference among studies according to the involvement of directly targeted participants with some type of psychological distress in all the outcomes except for stress at the immediate posttest. Forest plots of subgroup analyses according to the involvement of targeted participants with psychological distress symptoms are illustrated in Supplemental Materials (Figures S7 – S12).

Risk of Bias of the Included Studies

Of the 56 included studies, 35 had a high risk of bias, 19 had an unclear risk of bias, and two studies (Mifsud et al., 2021; Zheng et al., 2022) had a low risk of bias overall (Supplemental Materials – Table S2). The overall risk of bias across 56 studies was interpreted as high because more than half of the studies had a high risk of bias (i.e., 62.5%) (Higgins & Green, 2011). A blinded outcome assessment domain was not regarded as a key domain in the current review because all included studies used self-reported questionnaires as outcome measures. Twenty-six studies were judged to have a high risk of bias overall due to a high risk in one domain only, including a high risk of bias in the domain of incomplete outcome data in 18 studies due to missing outcome data from attrition across groups while excluding missing data without imputation in data analysis, in the domain of blinding of participants and personnel in seven studies, and in the domain of selective reporting in one study. Of the five key domains, those for allocation concealment, blinding of participants and research personnel, and selective reporting were determined to have an unclear risk of bias in the majority of the studies (i.e., 64.3%, 64.3%, and 58.9%, respectively). These studies did not provide a clear description of whether research personnel enrolling participants could

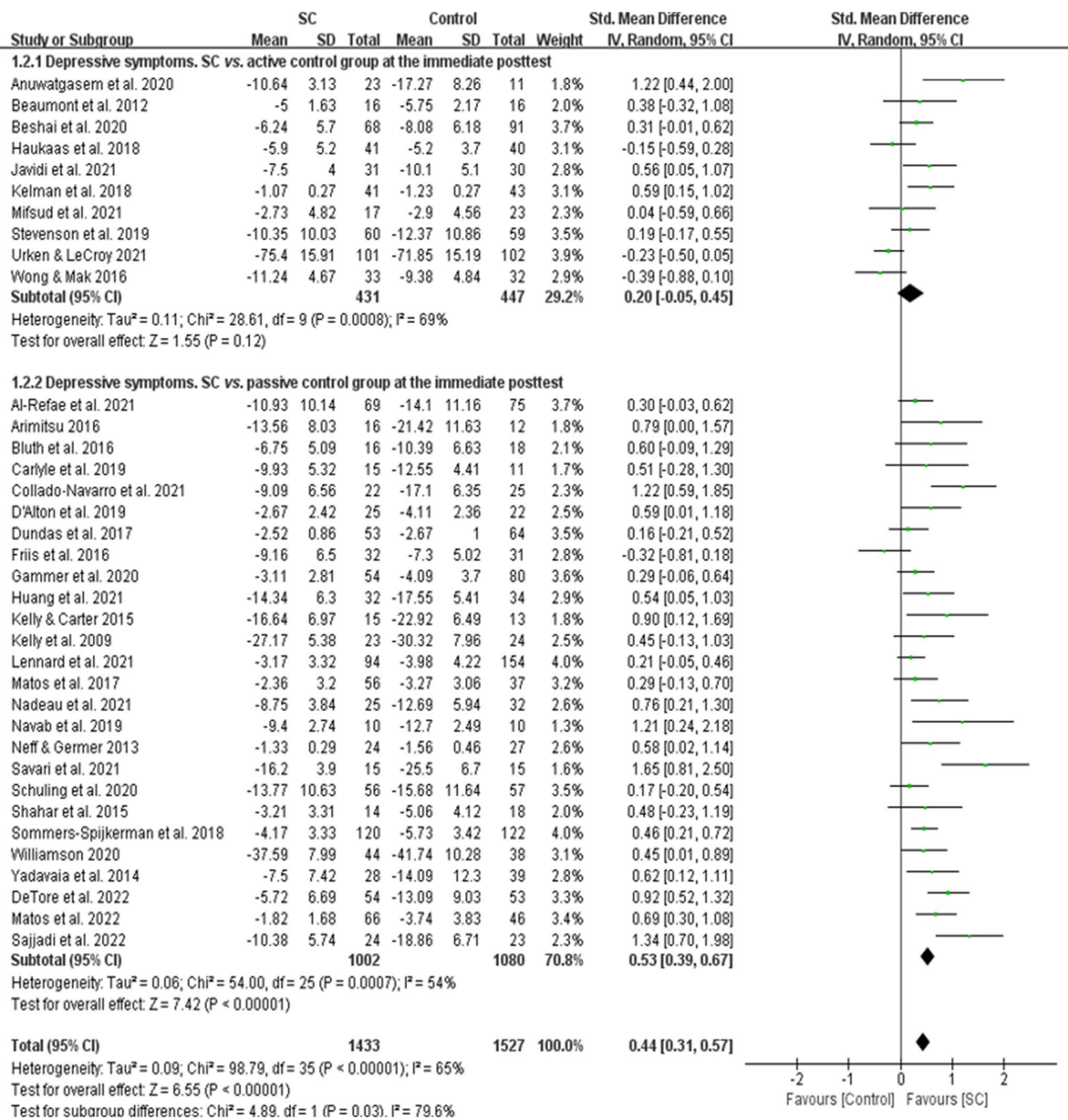


Fig. 2 A forest plot showing the effects of self-compassion interventions on depressive symptoms at the immediate posttest

foresee group assignment by using or not using appropriate methods (e.g., using sequentially numbered, opaque, sealed envelopes), whether participants and research personnel were blinded, or whether the study protocol was available and registered. More than half the studies (i.e., 67.9%) had a low risk of bias in the domain of random sequence generation. Almost half the studies had a high risk of bias in the domain of incomplete outcome data (48.2%) while 44.6% of the studies had a low risk of bias by either having no missing

outcome data or imputing missing data using appropriate methods.

Discussion

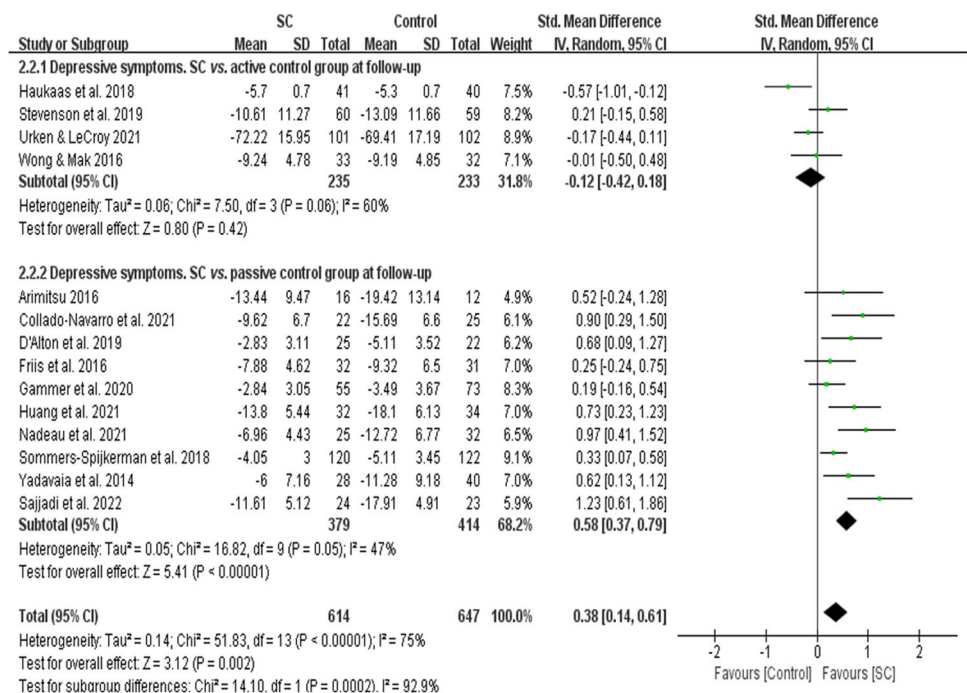
This meta-analysis showed that self-compassion focused interventions had medium effects on reducing depressive symptoms and stress and a small effect on reducing anxiety

at the immediate posttest and small effects on reducing depressive symptoms and stress at follow-up compared to control conditions. Findings of the present meta-analysis are supported by findings of the previous meta-analysis of self-compassion interventions that demonstrated medium effects on reducing depressive symptoms based on 15 RCTs, anxiety based on 14 RCTs, and stress based on five RCTs (Ferrari et al., 2019). Findings of the present meta-analysis were based on a larger number of studies, including 36 RCTs for depressive symptoms, 31 RCTs for anxiety, and 30 studies for stress because there were at least 40 studies published in peer-reviewed journals since the final database search was done by Ferrari et al. (2019). The previous meta-analysis (Ferrari et al., 2019) did not measure effects of self-compassion interventions on these outcomes at follow-up while the present study measured and found effects of self-compassion interventions on reducing depressive symptoms and stress at follow-up, possibly because there were more studies with follow-up data available in the present study. Findings of the present meta-analysis study are also supported by previous observational studies showing a relationship of higher levels of self-compassion with lower levels of depressive symptoms, anxiety, and stress in varied populations (Bohadana et al., 2019; Bui et al., 2021; Kim & Ko, 2018; Krieger et al., 2013; Murfield et al., 2020).

Self-compassion interventions may reduce depressive symptoms, anxiety, and stress because the interventions help individuals alleviate their suffering by being kind toward themselves, understand their suffering in a nonjudgmental

way, and accept it as part of the human experience while not engaging in symptom-focused rumination and cognitive and behavioral avoidance (Adie et al., 2021; Bates et al., 2021; Bui et al., 2021; Hsieh et al., 2019; Kavaklı et al., 2020; Krieger et al., 2013; Lau et al., 2020; Murfield et al., 2020; Neff, 2003). For example, a cross-sectional study that involved 242 adults showed that avoidance and activation were significant mediators of the relationship between self-compassion and depressive symptoms, suggesting an individual who is higher in self-compassion may schedule activities and engage in goal-directed behaviors instead of avoiding situations and aversive states and thus experience fewer depressive symptoms (Adie et al., 2021). Also, another cross-sectional study that involved 384 adults found the mediating role of self-compassion in the relationship between proactive coping and perceived stress, suggesting the protective role of self-compassion on psychological health (Bui et al., 2021). A lack of compassion for the self can be a risk factor for depression, and self-compassion enhancement programs can be valuable to prevent or treat depression (Hofmann et al., 2011; Krieger et al., 2013, 2016; Neff, 2016). Self-compassion interventions can strengthen individuals' motivation to participate in and maintain self-help strategies, and that preparatory using self-compassion might facilitate the subsequent use of cognitive reappraisal (Diedrich et al., 2016; Hein & Singer, 2008). Although effects of self-compassion interventions were not significantly different from other active control conditions like cognitive

Fig. 3 A forest plot showing the effects of self-compassion interventions on depressive symptoms at follow-up



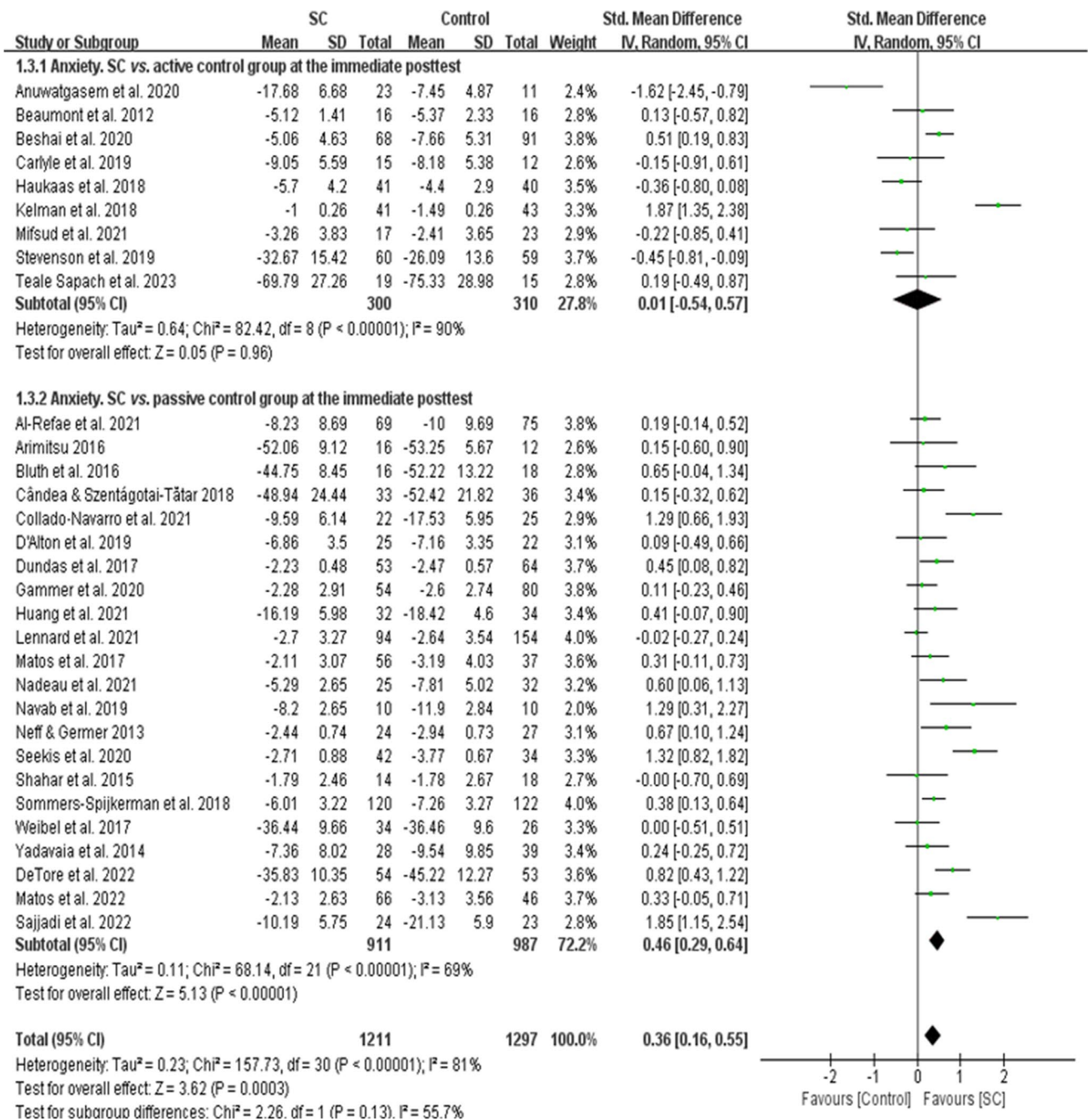


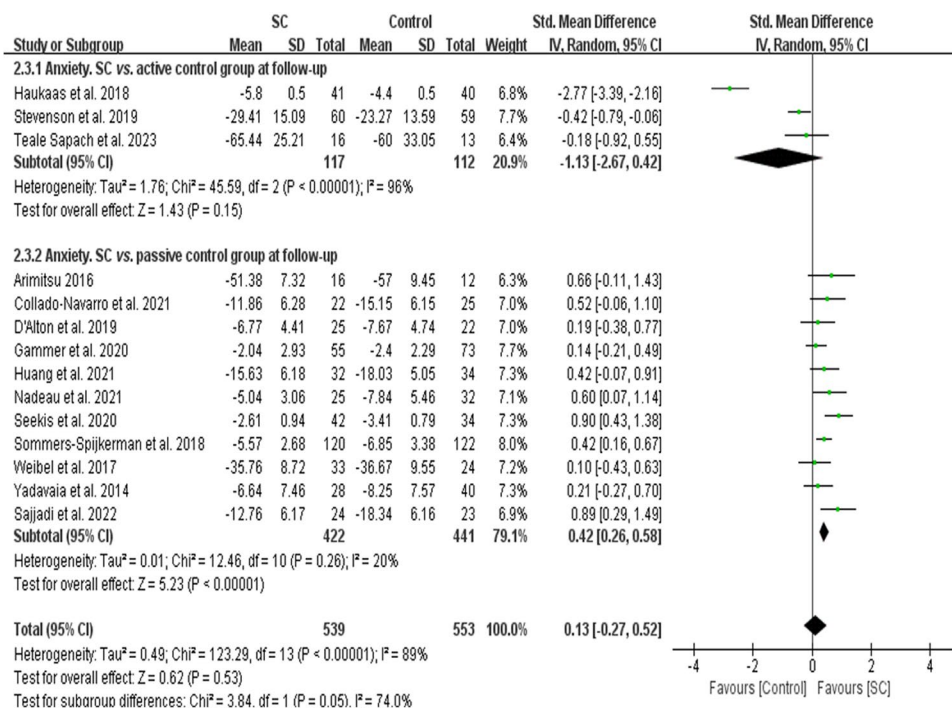
Fig. 4 A forest plot showing the effects of self-compassion interventions on anxiety at the immediate posttest

behavioral therapy, self-compassion interventions can be brief and applied more easily than cognitive behavioral therapy.

Unlike the previous meta-analysis by Ferrari et al. (2019), the present meta-analysis conducted subgroup analyses for each outcome according to the type of control groups (active vs. passive) and, except for anxiety and stress at the immediate posttest, found significant subgroup differences in all

outcomes at the immediate posttest and follow-up. This indicates the effects of the two subgroups (i.e., Subgroup 1: self-compassion intervention groups vs. active control groups; Subgroup 2: self-compassion intervention groups vs. passive control groups) were statistically different from one another. However, there were fewer studies that compared self-compassion interventions to active control groups than those that compared the interventions to passive control

Fig. 5 A forest plot showing the effects of self-compassion interventions on anxiety at followup



groups, especially for studies with follow-up data, indicating the need for more studies to verify if effects differ depending on specific control conditions.

The present meta-analysis study also conducted subgroup analyses according to the intervention delivery mode and the involvement of directly targeted participants with psychological distress symptoms. This study found no statistically significant subgroup difference among studies according to these two characteristics in all the outcomes except for the subgroup difference among studies according to the delivery modes for depressive symptoms at the immediate posttest and stress at follow-up (i.e., larger effects in studies that involved in-person self-compassion interventions than studies that involved online self-compassion interventions) and for the subgroup difference among studies according to the involvement of targeted participants with psychological distress symptoms for stress at the immediate posttest (a larger effect in studies with targeted participants with distress symptoms than studies without targeted participants with distress symptoms). However, more studies are needed to confirm these findings because there were relatively fewer studies that involved online self-compassion interventions and studies that involved directly targeted participants with psychological distress symptoms. For example, future meta-analysis studies may conduct subgroup analysis for studies that involved online self-compassion interventions further (e.g., Subgroup 1: self-compassion interventions with live presence of a facilitator vs. control groups;

Subgroup 2: self-compassion interventions that are fully self-paced vs. control groups) as more studies involving online self-compassion interventions are conducted.

Limitations and Future Directions

The search of the present review was limited to four electronic databases, so it is possible for some relevant articles to be missed if they were published only in other databases. Also, only peer-reviewed journal articles written in English were searched and included, leading to publication bias. One author with expertise in comprehensive literature search and psychological interventions went through the search and selection process, lacking the use of two independent reviewers. However, a recent systematic review found that single screening by experienced reviewers had no impact on the findings of meta-analyses (Waffenschmidt et al., 2019). The overall risk of bias across the included RCTs was interpreted as high, indicating a need for high-quality studies to determine the effects of self-compassion interventions on reducing depressive symptoms, anxiety, and stress.

The present study could not conduct subgroup analyses according to the dose of self-compassion interventions (e.g., duration or frequency of the intervention), specific self-compassion intervention techniques involved, specific comparison or control groups, and the presence of specific clinical conditions due to the heterogeneity and the limited

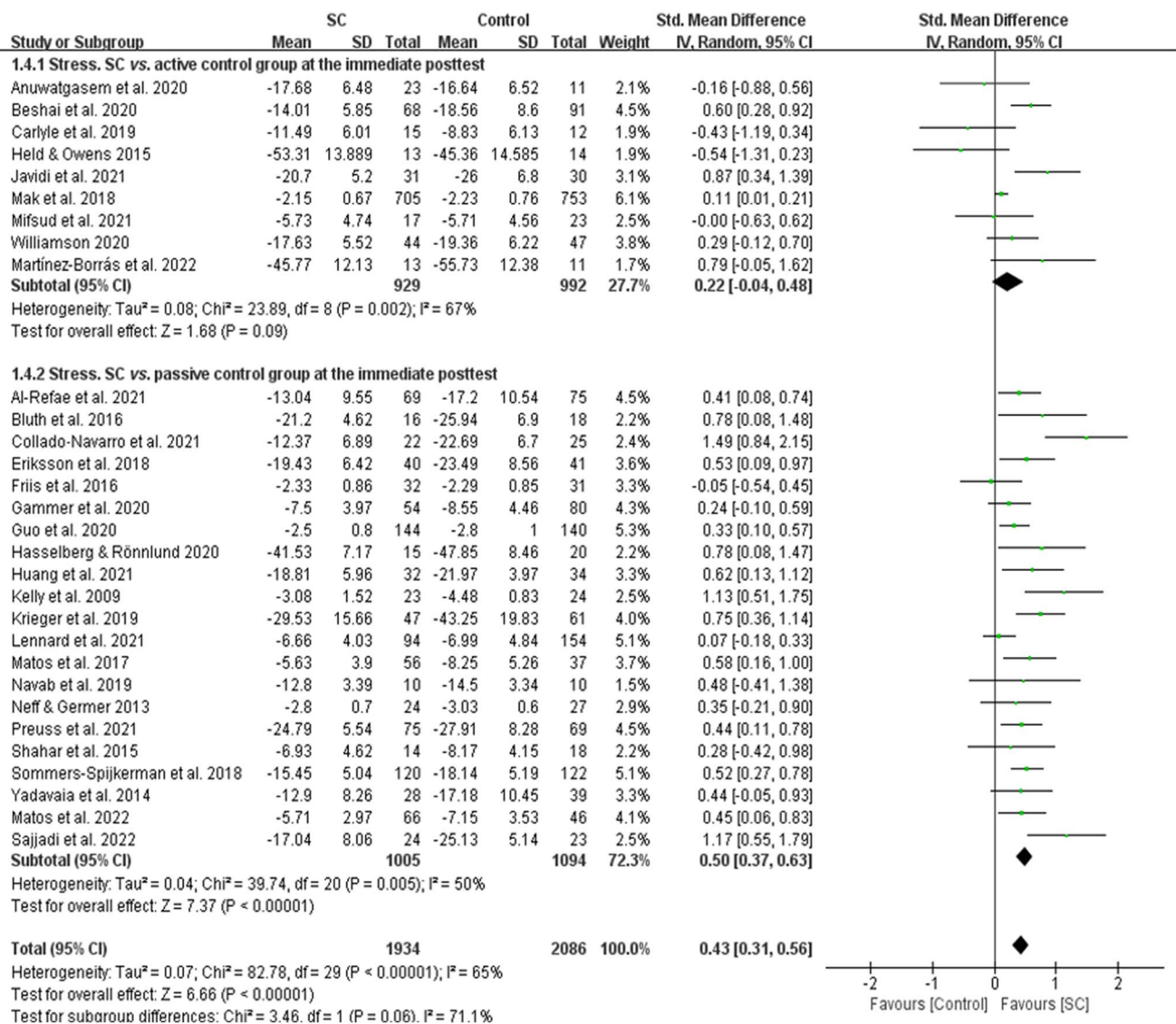
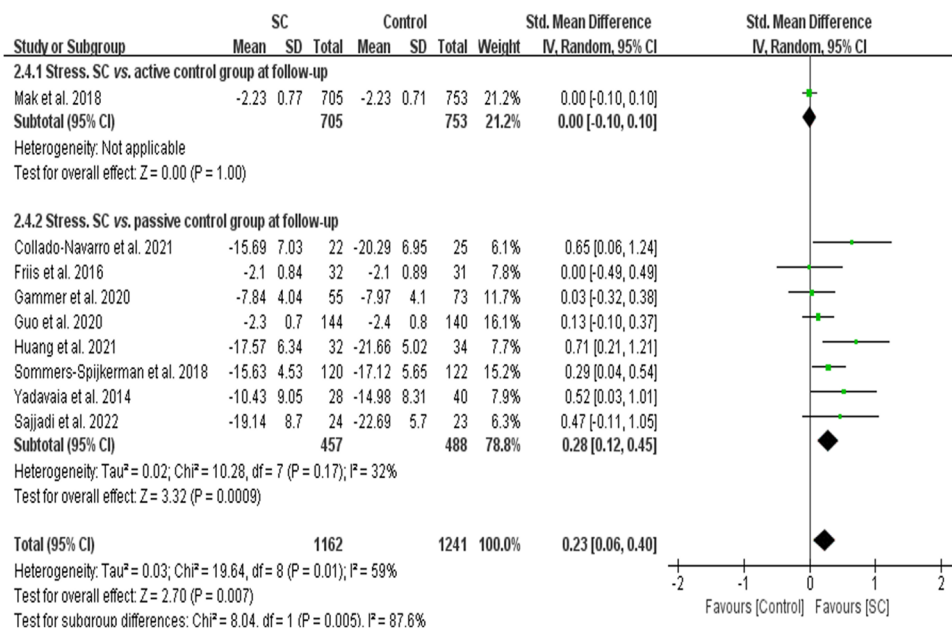


Fig. 6 A forest plot showing the effects of self-compassion interventions on stress at the immediate posttest

number of studies for each outcome. A future meta-analysis with such subgroup analyses can be conducted as more studies involving self-compassion interventions for specific populations are implemented and published. Also, future meta-analysis studies may measure the moderation effect of dose on intervention effects. Also, most of the included studies were conducted in Western countries, which limits the generalizability of the findings to people in Eastern countries (i.e., Asia and the Middle East) and suggests the need for more studies in Eastern countries. The mean age of participants was 33.3 years (*SD* = 11.4 years) across the included RCTs, and most of the included studies

targeted adult populations who were not older. None of the included studies targeted older adults in particular. Also, only two studies targeted adolescents only. This limits the generalizability of the findings to an older adult population or to populations under the age of 18. Further studies may focus specifically on older adults as studies found that self-compassion was positively related to psychological well-being in older adults and that self-compassion moderated the association between self-rated health and depressive symptoms in older adults (Homan, 2016). Since only one study involved male participants only, further studies may target male populations to better understand effects of self-compassion

Fig. 7 A forest plot showing the effects of self-compassion interventions on stress at followup



interventions for depressive symptoms, anxiety, and stress. Further meta-analysis studies may measure the moderation effect of gender and age as more studies are conducted for younger or older age groups and male populations.

Supplementary Information The online version contains supplementary material available at <https://doi.org/10.1007/s12671-023-02148-x>.

Acknowledgements The authors wish to thank Ms. Emily Delzell in the Department of Occupational Therapy at the University of Alabama at Birmingham, who assisted in the proof-reading of the manuscript.

Author Contributions Areum Han: Conceptualization, Methodology, Formal analysis, Investigation, Resources, Data curation, Writing—Original draft, Writing—Review & editing, Visualization, Project administration. Tae Hui Kim: Conceptualization, Writing—Review & editing, Supervision, Project administration, Funding acquisition.

Funding This research was supported by the “The innovation Growth Engine for Planning and Demonstration” of the Commercialization Promotion Agency For R&D Outcomes (COMPA) granted financial resource from the Ministry of Science and ICT, Republic of Korea (grant number: 2022M3E8A108083811).

Data Availability Data for each of the included studies (including means, standard deviations, and sample sizes of each of the intervention and control groups and characteristics of the studies) and meta-analysis results are reported in the main text, figures, and supplemental materials.

Declarations

Ethics Statement The manuscript does not contain individual participant data.

Informed Consent Statement Not required.

Conflict of Interest The authors declare that they have no potential conflicts of interest.

References

- Adie, T., Steindl, S. R., Kirby, J. N., Kane, R. T., & Mazzucchelli, T. G. (2021). The relationship between self-compassion and depressive symptoms: Avoidance and activation as mediators. *Mindfulness, 12*(7), 1748–1756. <https://doi.org/10.1007/s12671-021-01637-1>
- Al-Refae, M., Al-Refae, A., Munroe, M., Sardella, N. A., & Ferrari, M. (2021). A self-compassion and mindfulness-based cognitive mobile intervention (Serene) for depression, anxiety, and stress: Promoting adaptive emotional regulation and wisdom. *Frontiers in Psychology, 12*, 648087. <https://doi.org/10.3389/fpsyg.2021.648087>
- Anuwatgasem, C., Awirutworakul, T., Arj-Ong Vallibhakara, S., Kaisa-Ard, P., Yamnim, T., Phadermphon, K., Pranudta, P., Wisajun, P., & Jullagate, S. (2020). The effects of mindfulness and self-compassion-based group therapy for major depressive disorder: A randomized controlled trial. *Journal of the Medical Association of Thailand, 103*(9), 856–863. <https://doi.org/10.35755/jmedassoc.hai.2020.09.12020>
- Arimitsu, K. (2016). The effects of a program to enhance self-compassion in Japanese individuals: A randomized controlled pilot study. *Journal of Positive Psychology, 11*(6), 559–571. <https://doi.org/10.1080/17439760.2016.1152593>
- Bates, G. W., Elphinstone, B., & Whitehead, R. (2021). Self-compassion and emotional regulation as predictors of social anxiety. *Psychology and Psychotherapy, 94*(3), 426–442. <https://doi.org/10.1111/papt.12318>
- Beaumont, E., Galpin, A., & Jenkins, P. (2012). “Being kinder to myself”: A prospective comparative study, exploring post-trauma therapy outcome measures, for two groups of clients, receiving either cognitive behaviour therapy or cognitive behaviour therapy and compassionate mind training. *Counselling Psychology Review, 27*(1), 31–43.
- Beshai, S., Bueno, C., Yu, M., Feeney, J. R., & Pitariu, A. (2020). Examining the effectiveness of an online program to cultivate mindfulness and self-compassion skills (Mind-OP): Randomized controlled trial on Amazon’s Mechanical Turk. *Behaviour Research and Therapy, 134*, 103724. <https://doi.org/10.1016/j.brat.2020.103724>

- Biddle, Z., O'Callaghan, F. V., Finlay-Jones, A. L., & Reid, N. E. (2020). Caregivers of children with fetal alcohol spectrum disorder: Psychosocial factors and evidence for self-compassion as a potential intervention target. *Mindfulness*, *11*(9), 2189–2198. <https://doi.org/10.1007/s12671-020-01443-1>
- Bluth, K., Gaylord, S. A., Campo, R. A., Mullarkey, M. C., & Hobbs, L. (2016). Making friends with yourself: A mixed methods pilot study of a mindful self-compassion program for adolescents. *Mindfulness*, *7*(2), 479–492. <https://doi.org/10.1007/s12671-015-0476-6>
- Boggiss, A. L., Consedine, N. S., Schache, K. R., Jefferies, C., Bluth, K., Hofman, P. L., & Serlachius, A. S. (2020). A brief self-compassion intervention for adolescents with type 1 diabetes and disordered eating: A feasibility study. *Diabetic Medicine*, *37*(11), 1854–1860. <https://doi.org/10.1111/dme.14352>
- Bohadana, G., Morrissey, S., & Paynter, J. (2019). Self-compassion: A novel predictor of stress and quality of life in parents of children with autism spectrum disorder. *Journal of Autism and Developmental Disorders*, *49*(10), 4039–4052. <https://doi.org/10.1007/s10803-019-04121-x>
- Bui, T. H. T., Nguyen, T. N. T., Pham, H. D., Tran, C. T., & Ha, T. H. (2021). The mediating role of self-compassion between proactive coping and perceived stress among students. *Science Progress*, *104*(2), 368504211011872. <https://doi.org/10.1177/00368504211011872>
- Cândeia, D.-M., & Szentágotai-Tátar, A. (2018). The impact of self-compassion on shame-proneness in social anxiety. *Mindfulness*, *9*(6), 1816–1824. <https://doi.org/10.1007/s12671-018-0924-1>
- Carlyle, M., Rockliff, H., Edwards, R., Ene, C., Karl, A., Marsh, B., Hartley, L., & Morgan, C. J. (2019). Investigating the feasibility of brief compassion focused therapy in individuals in treatment for opioid use disorder. *Substance Abuse: Research and Treatment*, *13*, 1178221819836726. <https://doi.org/10.1177/1178221819836726>
- Carvalho, S. A., Trindade, I. A., Gillanders, D., Pinto-Gouveia, J., & Castilho, P. (2020). Self-compassion and depressive symptoms in chronic pain (CP): A 1-year longitudinal study. *Mindfulness*, *11*(3), 709–719. <https://doi.org/10.1007/s12671-019-01292-7>
- Collado-Navarro, C., Navarro-Gil, M., Pérez-Aranda, A., López-del-Hoyo, Y., García-Campayo, J., & Montero-Marin, J. (2021). Effectiveness of mindfulness-based stress reduction and attachment-based compassion therapy for the treatment of depressive, anxious, and adjustment disorders in mental health settings: A randomized controlled trial. *Depression and Anxiety*, *38*(11), 1138–1151. <https://doi.org/10.1002/da.23198>
- D'Alton, P., Kinsella, L., Walsh, O., Sweeney, C., Timoney, I., Lynch, M., O'Connor, M., & Kirby, B. (2019). Mindfulness-based interventions for psoriasis: A randomized controlled trial. *Mindfulness*, *10*(2), 288–300. <https://doi.org/10.1007/s12671-018-0973-5>
- DeTore, N. R., Luther, L., Deng, W., Zimmerman, J., Leatham, L., Burke, A. S., Nyer, M. B., & Holt, D. J. (2022). Efficacy of a transdiagnostic, prevention-focused program for at-risk young adults: A waitlist-controlled trial. *Psychological Medicine*. <https://doi.org/10.1017/S0033291722000046>
- Diedrich, A., Hofmann, S. G., Cuijpers, P., & Berking, M. (2016). Self-compassion enhances the efficacy of explicit cognitive reappraisal as an emotion regulation strategy in individuals with major depressive disorder. *Behaviour Research and Therapy*, *82*, 1–10. <https://doi.org/10.1016/j.brat.2016.04.003>
- Dundas, I., Binder, P. E., Hansen, T. G. B., & Stige, S. H. (2017). Does a short self-compassion intervention for students increase healthy self-regulation? A randomized control trial. *Scandinavian Journal of Psychology*, *58*(5), 443–450. <https://doi.org/10.1111/sjop.12385>
- Eriksson, T., Germundsjö, L., Åström, E., & Rönnlund, M. (2018). Mindful self-compassion training reduces stress and burnout symptoms among practicing psychologists: A randomized controlled trial of a brief web-based intervention. *Frontiers in Psychology*, *9*, 2340. <https://doi.org/10.3389/fpsyg.2018.02340>
- Fernandes, D. V., Monteiro, F., Canavarro, M. C., & Moreira, H. (2022). A web-based, mindful, and compassionate parenting training for mothers experiencing parenting stress: Results from a pilot randomized controlled trial of the mindful moment program. *Mindfulness*, *13*(12), 3091–3108. <https://doi.org/10.1007/s12671-022-02016-0>
- Ferrari, M., Hunt, C., Harrysunker, A., Abbott, M. J., Beath, A. P., & Einstein, D. A. (2019). Self-compassion interventions and psychosocial outcomes: A meta-analysis of RCTs. *Mindfulness*, *10*(8), 1455–1473. <https://doi.org/10.1007/s12671-019-01134-6>
- Friis, A. M., Johnson, M. H., Cutfield, R. G., & Consedine, N. S. (2016). Kindness matters: A randomized controlled trial of a mindful self-compassion intervention improves depression, distress, and HbA1c among patients with diabetes. *Diabetes Care*, *39*(11), 1963–1971. <https://doi.org/10.2337/dc16-0416>
- Gammer, I., Hartley-Jones, C., & Jones, F. W. (2020). A randomized controlled trial of an online, compassion-based intervention for maternal psychological well-being in the first year postpartum. *Mindfulness*, *11*(4), 928–939. <https://doi.org/10.1007/s12671-020-01306-9>
- Gilbert, P. (2009). *The compassionate mind: A new approach to life challenges*. Constable and Robinson.
- Guo, L., Zhang, J., Mu, L., & Ye, Z. (2020). Preventing postpartum depression with mindful self-compassion intervention: A randomized control study. *The Journal of Nervous and Mental Disease*, *208*(2), 101–107. <https://doi.org/10.1097/nmd.0000000000001096>
- Hasselberg, A., & Rönnlund, M. (2020). Cultivating self-kindness and attention to the present moment in the young: A pilot-study of a two-week internet-delivered mindfulness and self-compassion program. *Cogent Psychology*, *7*(1), 12. <https://doi.org/10.1080/23311908.2020.1769807>
- Haukaas, R. B., Gjerde, I. B., Varting, G., Hallan, H. E., & Solem, S. (2018). A randomized controlled trial comparing the attention training technique and mindful self-compassion for students with symptoms of depression and anxiety. *Frontiers in Psychology*, *9*, 827. <https://doi.org/10.3389/fpsyg.2018.00827>
- Hein, G., & Singer, T. (2008). I feel how you feel but not always: The empathic brain and its modulation. *Current Opinion in Neurobiology*, *18*(2), 153–158. <https://doi.org/10.1016/j.conb.2008.07.012>
- Held, P., & Owens, G. P. (2015). Effects of self-compassion workbook training on trauma-related guilt in a sample of homeless veterans: A pilot study. *Journal of Clinical Psychology*, *71*(6), 513–526. <https://doi.org/10.1002/jclp.22170>
- Higgins, J. P. T., & Green, S. (2011). Cochrane Handbook for Systematic Reviews of Interventions Version 5.1.0. *The Cochrane Collaboration*. <https://training.cochrane.org/handbook>
- Hofmann, S. G., Grossman, P., & Hinton, D. E. (2011). Loving-kindness and compassion meditation: Potential for psychological interventions. *Clinical Psychology Review*, *31*(7), 1126–1132. <https://doi.org/10.1016/j.cpr.2011.07.003>
- Homan, K. J. (2016). Self-compassion and psychological well-being in older adults. *Journal of Adult Development*, *23*(2), 111–119. <https://doi.org/10.1007/s10804-016-9227-8>
- Hsieh, C. C., Yu, C. J., Chen, H. J., Chen, Y. W., Chang, N. T., & Hsiao, F. H. (2019). Dispositional mindfulness, self-compassion, and compassion from others as moderators between stress and depression in caregivers of patients with lung cancer. *Psycho-Oncology*, *28*(7), 1498–1505. <https://doi.org/10.1002/pon.5106>
- Huang, J., Lin, K., Fan, L., Qiao, S., & Wang, Y. (2021). The effects of a self-compassion intervention on future-oriented coping and psychological well-being: A randomized controlled trial in Chinese college students. *Mindfulness*, *12*(6), 1451–1458. <https://doi.org/10.1007/s12671-021-01614-8>

- Javidi, Z., Prior, K. N., Sloan, T. L., & Bond, M. J. (2023). A randomized controlled trial of self-compassion versus cognitive therapy for complex psychopathologies. *Current Psychology*, *42*, 946–954. <https://doi.org/10.1007/s12144-021-01490-4>
- Kavaklı, M., Ak, M., Uğuz, F., & Türkmen, O. O. (2020). The mediating role of self-compassion in the relationship between perceived COVID-19 threat and death anxiety. *Klinik Psikiyatri Dergisi: The Journal of Clinical Psychiatry*, *23*(Suppl 1), 15–23. <https://doi.org/10.5505/kpd.2020.59862>
- Kelly, A. C., & Carter, J. C. (2015). Self-compassion training for binge eating disorder: A pilot randomized controlled trial. *Psychology and Psychotherapy: Theory, Research and Practice*, *88*(3), 285–303. <https://doi.org/10.1111/papt.12044>
- Kelly, A. C., Zuroff, D. C., & Shapira, L. B. (2009). Soothing oneself and resisting self-attacks: The treatment of two intrapersonal deficits in depression vulnerability. *Cognitive Therapy and Research*, *33*(3), 301–313. <https://doi.org/10.1007/s10608-008-9202-1>
- Kelman, A. R., Evare, B. S., Barrera, A. Z., Muñoz, R. F., & Gilbert, P. (2018). A proof-of-concept pilot randomized comparative trial of brief internet-based compassionate mind training and cognitive-behavioral therapy for perinatal and intending to become pregnant women. *Clinical Psychology & Psychotherapy*, *25*(4), 608–619. <https://doi.org/10.1002/cpp.2185>
- Kim, C., & Ko, H. (2018). The impact of self-compassion on mental health, sleep, quality of life and life satisfaction among older adults. *Geriatric Nursing*, *39*(6), 623–628. <https://doi.org/10.1016/j.gerinurse.2018.06.005>
- Krieger, T., Altenstein, D., Baettig, I., Doerig, N., & Holtforth, M. G. (2013). Self-compassion in depression: Associations with depressive symptoms, rumination, and avoidance in depressed outpatients. *Behavior Therapy*, *44*(3), 501–513. <https://doi.org/10.1016/j.beth.2013.04.004>
- Krieger, T., Berger, T., & Holtforth, M. G. (2016). The relationship of self-compassion and depression: Cross-lagged panel analyses in depressed patients after outpatient therapy. *Journal of Affective Disorders*, *202*, 39–45. <https://doi.org/10.1016/j.jad.2016.05.032>
- Krieger, T., Reber, F., von Glutz, B., Urech, A., Moser, C. T., Schulz, A., & Berger, T. (2019). An internet-based compassion-focused intervention for increased self-criticism: A randomized controlled trial. *Behavior Therapy*, *50*(2), 430–445. <https://doi.org/10.1016/j.beth.2018.08.003>
- Lau, B. H. P., Chan, C. L. W., & Ng, S. M. (2020). Self-compassion buffers the adverse mental health impacts of COVID-19-related threats: Results from a cross-sectional survey at the first peak of Hong Kong's outbreak. *Frontiers in Psychiatry*, *11*, 585270. <https://doi.org/10.3389/fpsy.2020.585270>
- Lennard, G. R., Mitchell, A. E., & Whittingham, K. (2021). Randomized controlled trial of a brief online self-compassion intervention for mothers of infants: Effects on mental health outcomes. *Journal of Clinical Psychology*, *77*(3), 473–487. <https://doi.org/10.1002/jclp.23068>
- Mak, W. W. S., Tong, A. C. Y., Yip, S. Y. C., Lui, W. W. S., Chio, F. H. N., Chan, A. T. Y., & Wong, C. C. Y. (2018). Efficacy and moderation of mobile app-based programs for mindfulness-based training, self-compassion training, and cognitive behavioral psychoeducation on mental health: Randomized controlled noninferiority trial. *Journal of Medical Internet Research*, *5*(4), e60. <https://doi.org/10.2196/mental.8597>
- Martínez-rubio, D., Navarrete, J., & Montero-marin, J. (2022). Feasibility, effectiveness, and mechanisms of a brief mindfulness- and compassion-based program to reduce stress in university students: A pilot randomized controlled trial. *International Journal of Environmental Research and Public Health*, *19*(1), 154. <https://doi.org/10.3390/ijerph19010154>
- Matos, M., Duarte, C., Duarte, J., Pinto-Gouveia, J., Petrocchi, N., Basran, J., & Gilbert, P. (2017). Psychological and physiological effects of compassionate mind training: A pilot randomised controlled study. *Mindfulness*, *8*(6), 1699–1712. <https://doi.org/10.1007/s12671-017-0745-7>
- Matos, M., Albuquerque, I., Galhardo, A., Cunha, M., Pedroso Lima, M., Palmeira, L., Petrocchi, N., McEwan, K., Maratos, F. A., & Gilbert, P. (2022). Nurturing compassion in schools: A randomized controlled trial of the effectiveness of a Compassionate Mind Training program for teachers. *PLoS ONE*, *17*(3), 36. <https://doi.org/10.1371/journal.pone.0263480>
- Mifsud, A., Pehlivan, M. J., Fam, P., O'Grady, M., van Steensel, A., Elder, E., Gilchrist, J., & Sherman, K. A. (2021). Feasibility and pilot study of a brief self-compassion intervention addressing body image distress in breast cancer survivors. *Health Psychology and Behavioral Medicine*, *9*(1), 498–526. <https://doi.org/10.1080/21642850.2021.1929236>
- Murfield, J., Moyle, W., O'Donovan, A., & Ware, R. S. (2020). The role of self-compassion, dispositional mindfulness, and emotion regulation in the psychological health of family carers of older adults. *Clinical Gerontologist*. <https://doi.org/10.1080/07317115.2020.1846650>
- Nadeau, M. M., Caporale-Berkowitz, N. A., & Rochlen, A. B. (2021). Improving women's self-compassion through an online program: A randomized controlled trial. *Journal of Counseling & Development*, *99*(1), 47–59. <https://doi.org/10.1002/jcad.12353>
- Navab, M., Dehghani, A., & Salehi, M. (2019). Effect of compassion-focused group therapy on psychological symptoms in mothers of attention-deficit hyperactivity disorder children: A pilot study. *Counselling and Psychotherapy Research*, *19*(2), 149–157. <https://doi.org/10.1002/capr.12212>
- Neff, K. (2003). Self-compassion: An alternative conceptualization of a healthy attitude toward oneself. *Self & Identity*, *2*(2), 85–101. <https://doi.org/10.1080/15298860309032>
- Neff, K. D. (2016). The Self-Compassion Scale is a valid and theoretically coherent measure of self-compassion. *Mindfulness*, *7*(1), 264–274. <https://doi.org/10.1007/s12671-015-0479-3>
- Neff, K. D., & Germer, C. K. (2013). A pilot study and randomized controlled trial of the mindful self-compassion program. *Journal of Clinical Psychology*, *69*(1), 28–44. <https://doi.org/10.1002/jclp.21923>
- Noorbala, F., Borjali, A., Ahmadian-Attari, M. M., & Noorbala, A. A. (2013). Effectiveness of compassionate mind training on depression, anxiety, and self-criticism in a group of Iranian depressed patients. *Iranian Journal of Psychiatry*, *8*(3), 113–117.
- Page, M. J., McKenzie, J. E., Bossuyt, P. M., Boutron, I., Hoffmann, T. C., Mulrow, C. D., Shamseer, L., Tetzlaff, J. M., Akl, E. A., Brennan, S. E., Chou, R., Glanville, J., Grimshaw, J. M., Hróbjartsson, A., Lalu, M. M., Li, T., Loder, E. W., Mayo-Wilson, E., McDonald, S., ..., & Moher, D. (2021). The PRISMA 2020 statement: An updated guideline for reporting systematic reviews. *BMJ*, *372*, n71. <https://doi.org/10.1136/bmj.n71>
- Preuss, H., Capito, K., van Eickels, R. L., Zemp, M., & Kolar, D. R. (2021). Cognitive reappraisal and self-compassion as emotion regulation strategies for parents during COVID-19: An online randomized controlled trial. *Internet Interventions*, *24*, 100388. <https://doi.org/10.1016/j.invent.2021.100388>
- Sajjadi, M., Nofereesti, A., & Abbasi, M. (2022). Mindful self-compassion intervention among young adults with a history of childhood maltreatment: Reducing psychopathological symptoms, shame, and self-criticism. *Current Psychology*. <https://doi.org/10.1007/s12144-022-03761-0>
- Savari, Y., Mohagheghi, H., & Petrocchi, N. (2021). A preliminary investigation on the effectiveness of compassionate mind training for students with major depressive disorder: A randomized controlled trial. *Mindfulness*, *12*(5), 1159–1172. <https://doi.org/10.1007/s12671-020-01584-3>
- Schnepper, R., Reichenberger, J., & Blechert, J. (2020). Being my own companion in times of social isolation – A 14-day mobile self-compassion intervention improves stress levels and eating

- behavior. *Frontiers in Psychology*, *11*, 595806. <https://doi.org/10.3389/fpsyg.2020.595806>
- Schuling, R., Huijbers, M. J., van Ravesteijn, H., Donders, R., Cillessen, L., Kuyken, W., & Speckens, A. E. M. (2020). Recovery from recurrent depression: Randomized controlled trial of the efficacy of mindfulness-based compassionate living compared with treatment-as-usual on depressive symptoms and its consolidation at longer term follow-up. *Journal of Affective Disorders*, *273*, 265–273. <https://doi.org/10.1016/j.jad.2020.03.182>
- Seekis, V., Bradley, G. L., & Duffy, A. L. (2020). Does a Facebook-enhanced mindful self-compassion intervention improve body image? An evaluation study. *Body Image*, *34*, 259–269. <https://doi.org/10.1016/j.bodyim.2020.07.006>
- Shahar, B., Szsepsenwol, O., Zilcha-Mano, S., Haim, N., Zamir, O., Levi-Yeshuvi, S., & Levit-Binnun, N. (2015). A wait-list randomized controlled trial of loving-kindness meditation programme for self-criticism. *Clinical Psychology & Psychotherapy*, *22*(4), 346–356. <https://doi.org/10.1002/cpp.1893>
- Shapira, L. B., & Mongrain, M. (2010). The benefits of self-compassion and optimism exercises for individuals vulnerable to depression. *Journal of Positive Psychology*, *5*(5), 377–389. <https://doi.org/10.1080/17439760.2010.516763>
- Sommers-Spijkerman, M. P. J., Trompetter, H. R., Schreurs, K. M. G., & Bohlmeijer, E. T. (2018). Compassion-focused therapy as guided self-help for enhancing public mental health: A randomized controlled trial. *Journal of Consulting and Clinical Psychology*, *86*(2), 101–115. <https://doi.org/10.1037/ccp0000268>
- Stevenson, J., Mattiske, J. K., & Nixon, R. D. V. (2019). The effect of a brief online self-compassion versus cognitive restructuring intervention on trait social anxiety. *Behaviour Research and Therapy*, *123*, 103492. <https://doi.org/10.1016/j.brat.2019.103492>
- Teale Sapach, M. J. N., & Carleton, R. N. (2023). Self-compassion training for individuals with social anxiety disorder: A preliminary randomized controlled trial. *Cognitive Behaviour Therapy*, *52*(1), 18–37. <https://doi.org/10.1080/16506073.2022.2130820>
- Thompson, E. M., Destree, L., Albertella, L., & Fontenelle, L. F. (2021). Internet-based acceptance and commitment therapy: A transdiagnostic systematic review and meta-analysis for mental health outcomes. *Behavior Therapy*, *52*(2), 492–507. <https://doi.org/10.1016/j.beth.2020.07.002>
- Torrijos-Zarcero, M., Mediavilla, R., Rodríguez-Vega, B., Del Río-Diéguez, M., López-Álvarez, I., Rocamora-González, C., & Palao-Tarrero, Á. (2021). Mindful self-compassion program for chronic pain patients: A randomized controlled trial. *European Journal of Pain*, *25*(4), 930–944. <https://doi.org/10.1002/ejp.1734>
- Urken, D., & LeCroy, C. W. (2021). A randomized controlled trial of a self-compassion writing intervention for adults with mental illness. *Research on Social Work Practice*, *31*(3), 254–266. <https://doi.org/10.1177/1049731520972779>
- Waffenschmidt, S., Knelangen, M., Sieben, W., Bühn, S., & Pieper, D. (2019). Single screening versus conventional double screening for study selection in systematic reviews: A methodological systematic review. *BMC Medical Research Methodology*, *19*(1), 132. <https://doi.org/10.1186/s12874-019-0782-0>
- Weibel, D. T., McClintock, A. S., & Anderson, T. (2017). Does loving-kindness meditation reduce anxiety? Results from a randomized controlled trial. *Mindfulness*, *8*(3), 565–571. <https://doi.org/10.1007/s12671-016-0630-9>
- Williamson, J. (2020). Effects of a self-compassion break induction on self-reported stress, self-compassion, and depressed mood. *Psychological Reports*, *123*(5), 1537–1556. <https://doi.org/10.1177/0033294119877817>
- Wilson, A. C., Mackintosh, K., Power, K., & Chan, S. W. Y. (2019). Effectiveness of self-compassion related therapies: A systematic review and meta-analysis. *Mindfulness*, *10*(6), 979–995. <https://doi.org/10.1007/s12671-018-1037-6>
- Wong, C. C. Y., & Mak, W. W. S. (2016). Writing can heal: Effects of self-compassion writing among Hong Kong Chinese college students. *Asian American Journal of Psychology*, *7*(1), 74–82. <https://doi.org/10.1037/aap0000041>
- Woodfin, V., Molde, H., Dundas, I., & Binder, P. E. (2021). A randomized control trial of a brief self-compassion intervention for perfectionism, anxiety, depression, and body image. *Frontiers in Psychology*, *12*, 8. <https://doi.org/10.3389/fpsyg.2021.751294>
- Yadavaia, J. E., Hayes, S. C., & Vilardaga, R. (2014). Using acceptance and commitment therapy to increase self-compassion: A randomized controlled trial. *Journal of Contextual Behavioral Science*, *3*(4), 248–257. <https://doi.org/10.1016/j.jcbs.2014.09.002>
- Zheng, F., Zheng, Y., Liu, S., Yang, J., Xiao, W., Xiao, W., Chen, L., Yang, W., Zhang, S., Yu, Q., Hao, Z., Wang, Y., & Wang, C. (2022). The effect of m-health-based core stability exercise combined with self-compassion training for patients with non-specific chronic low back pain: A randomized controlled pilot study. *Pain and Therapy*, *11*(2), 511–528. <https://doi.org/10.1007/s40122-022-00358-0>

Publisher's Note Springer Nature remains neutral with regard to jurisdictional claims in published maps and institutional affiliations.

Springer Nature or its licensor (e.g. a society or other partner) holds exclusive rights to this article under a publishing agreement with the author(s) or other rightsholder(s); author self-archiving of the accepted manuscript version of this article is solely governed by the terms of such publishing agreement and applicable law.