

Erratum to: Detrended fluctuation analysis of spatial patterns on urban impervious surface

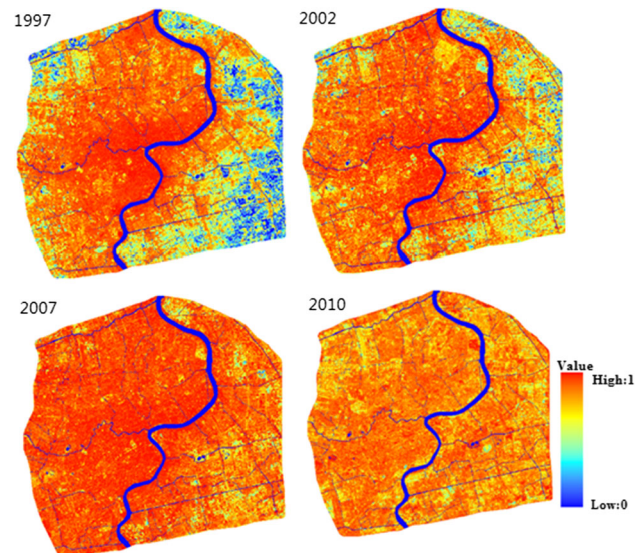
Qin Nie¹ · Jianhua Xu² · Wang Man¹ · Fengqin Sun¹

Published online: 10 April 2015
© Springer-Verlag Berlin Heidelberg 2015

Erratum to: Environ Earth Sci DOI 10.1007/s12665-015-4271-4

The original article has been published inadvertently with some errors in Eq. 7 and Fig. 4. The corrected Eq. 7 and Fig. 4 are given below.

$$F^2(v, w, s) = \frac{1}{s^2} \sum_{i=1}^s \sum_{j=1}^s \epsilon_{v,w}(i, j)^2 \quad (7)$$



The online version of the original article can be found under doi:[10.1007/s12665-015-4271-4](https://doi.org/10.1007/s12665-015-4271-4).

✉ Qin Nie
nieqinhongyi@163.com

¹ Department of Spatial Information Science and Engineering, Xiamen University of Technology, Xiamen 361024, China

² The Research Center for East-West Cooperation in China, The Key Lab of GIScience of the Education Ministry PRC, East China Normal University, Shanghai 200241, China