

# Perioperative intravenous lidocaine infusion for postoperative pain control: a meta-analysis of randomized controlled trials

## Perfusion intraveineuse périopératoire de lidocaïne pour le contrôle de la douleur postopératoire: une méta-analyse d'études randomisées contrôlées

Louise Vigneault, MD · Alexis F. Turgeon, MD · Dany Côté, MD ·  
François Lauzier, MD · Ryan Zarychanski, MD · Lynne Moore, PhD ·  
Lauralyn A. McIntyre, MD · Pierre C. Nicole, MD · Dean A. Fergusson, PhD

Received: 26 July 2010 / Accepted: 14 October 2010 / Published online: 9 November 2010  
© Canadian Anesthesiologists' Society 2010

### Abstract

**Introduction** Various strategies have been proposed for postoperative pain control. Among those, intravenous lidocaine infusion (IVLI) has gained in interest. However, its clinical benefit remains unclear. This systematic review is an evaluation of the analgesic efficacy and safety of IVLI during general anesthesia.

**Methods** A systematic search was performed using MEDLINE, EMBASE, Cochrane, and SCOPUS databases, likewise, grey literature. The review included all randomized controlled trials that used a placebo or any comparator and evaluated IVLI during general anesthesia for any type of surgery. Primary outcomes were pain control and opioid requirement. Secondary outcomes were mortality, length of stay, ileus recovery time, nausea/vomiting, and adverse events. Random effects models were used and heterogeneity was assessed using the  $I^2$  index.

**Results** From 5,472 citations retrieved, 29 studies involving a total of 1,754 patients met eligibility. At six hours postoperatively, intravenous lidocaine infusion reduced pain at rest (weighted mean difference [WMD]  $-8.70$ , 95% confidence intervals [CI]  $-16.19$  to  $-1.21$ ), during cough (WMD  $-11.19$ , 95% CI  $-17.73$  to  $-4.65$ ), and during movement (WMD  $-9.56$ , 95% CI  $-17.31$  to  $-1.80$ ). Intravenous lidocaine infusion also reduced opioid requirement (morphine) (WMD  $-8.44$  mg, 95% CI  $-11.32$  to  $-5.56$ ), time to first flatus (WMD  $-7.62$  hr, 95% CI  $-10.78$  to  $-4.45$ ), time to first feces (WMD  $-10.71$  hr, 95% CI  $-16.14$  to  $-5.28$ ), nausea/vomiting (risk ratios =  $0.71$ , 95% CI  $0.57$ - $0.90$ ), and hospital length of stay (WMD  $-0.17$  days, 95% CI  $-0.41$  to  $0.07$ ). Abdominal surgery was strongly associated with benefit. For the 12 studies that systematically screened adverse events, the

L. Vigneault, MD · A. F. Turgeon, MD (✉) · D. Côté, MD ·  
F. Lauzier, MD · P. C. Nicole, MD  
Département d'anesthésiologie, Division de Soins Intensifs,  
Centre Hospitalier Affilié Universitaire de Québec,  
Hôpital de l'Enfant-Jésus, Université Laval, Québec,  
QC G1J 1Z4, Canada  
e-mail: alexis.turgeon@fmed.ulaval.ca

A. F. Turgeon, MD · F. Lauzier, MD · L. Moore, PhD  
Centre de recherche FRSQ du CHA (Hôpital de l'Enfant-Jésus),  
Axe Traumatologie – Urgence – Soins Intensifs, Université  
Laval, Québec, QC, Canada

F. Lauzier, MD  
Département de Médecine, Centre Hospitalier Affilié  
Universitaire de Québec, Hôpital de l'Enfant-Jésus, Université  
Laval, Québec, QC, Canada

R. Zarychanski, MD  
Department of Hematology and Medical Oncology,  
University of Manitoba, Winnipeg, MB, Canada

L. Moore, PhD  
Department of Médecine Sociale et Préventive, Université  
Laval, Québec, QC, Canada

L. A. McIntyre, MD  
Department of Critical Care Medicine, The Ottawa Hospital,  
University of Ottawa, Ottawa, ON, Canada

L. A. McIntyre, MD · D. A. Fergusson, PhD  
Centre for Transfusion and Critical Care Research, Clinical  
Epidemiology Unit, Ottawa Health Research Institute,  
University of Ottawa, Ottawa, ON, Canada

incidence of cardiac and neurologic adverse events was comparable. Eight studies observed toxic plasma levels.

**Discussion** Perioperative IVLI reduced postoperative pain and opioid requirement, as well as ileus recovery time, hospital length of stay, and nausea/vomiting. Intravenous lidocaine infusion was effective mainly in abdominal surgery populations. Considering that toxic levels were detected and that adverse events were not systematically screened for in most studies, dose and safety of IVLI should be established before recommending its use.

## Résumé

**Introduction** Plusieurs stratégies ont été proposées pour le contrôle de la douleur postopératoire. Parmi ces stratégies, la lidocaïne par voie intraveineuse suscite un intérêt croissant. Toutefois, ses avantages cliniques demeurent peu clairs. Cette revue méthodique est une évaluation de l'efficacité analgésique et de l'innocuité de la lidocaïne par voie intraveineuse pendant l'anesthésie générale.

**Méthode** Une recherche méthodique a été réalisée dans les bases de données MEDLINE, EMBASE, Cochrane et SCOPUS ainsi que dans la littérature grise. Cette revue a tenu compte de toutes les études randomisées contrôlées ayant utilisé un placebo ou un traitement de référence et évalué la lidocaïne par voie intraveineuse pendant l'anesthésie générale, quel que soit le type de chirurgie. Les principaux critères d'évaluation étaient le contrôle de la douleur et le besoin en opioïdes. Les critères d'évaluation secondaires étaient la mortalité, la durée d'hospitalisation, le temps de récupération du transit intestinal, les nausées et vomissements et les événements indésirables. Des modèles à effets aléatoires ont été utilisés et l'hétérogénéité a été évaluée à l'aide de l'indice  $I^2$ .

**Résultats** Des 5472 citations extraites, 29 études auxquelles un total de 1754 patients ont participé répondaient à nos critères de sélection. Six heures après l'opération, la lidocaïne par voie intraveineuse a réduit la douleur au repos (différence moyenne pondérée [DMP]  $-8,70$ , intervalles de confiance [IC] 95 %  $-16,19$  à  $-1,21$ ), pendant les épisodes de toux (DMP  $-11,19$ , IC 95 %  $-17,73$  à  $-4,65$ ), et en mouvement (DMP  $-9,56$ , IC 95 %  $-17,31$  à  $-1,80$ ). La lidocaïne par voie intraveineuse a également réduit le besoin en opioïdes (morphine) (DMP  $-8,44$  mg, IC 95 % CI  $-11,32$  à  $-5,56$ ), le temps jusqu'à la première flatuosité (DMP  $-7,62$  h, IC 95 %  $-10,78$  à  $-4,45$ ), le temps jusqu'à la première selle (DMP  $-10,71$  h, IC 95 %  $-16,14$  à  $-5,28$ ), les nausées et vomissements (risques relatifs =  $0,71$ , IC 95 %  $0,57-0,90$ ) et la durée d'hospitalisation (DMP  $-0,17$  jours, IC 95 %  $-0,41$  à  $0,07$ ). La chirurgie abdominale a été fortement associée aux bienfaits de la lidocaïne par voie intraveineuse. Dans les 12 études ayant méthodiquement rendu compte

des événements indésirables, l'incidence d'événements indésirables cardiaques et neurologiques était comparable. Huit études ont fait état de taux plasmatiques toxiques.

**Discussion** La lidocaïne par voie intraveineuse périopératoire a réduit la douleur postopératoire et le besoin d'opioïdes, ainsi que le temps de récupération du transit intestinal, la durée d'hospitalisation et les nausées et vomissements. La lidocaïne par voie intraveineuse a été particulièrement efficace chez les patients subissant une chirurgie abdominale. Étant donné que des niveaux toxiques ont été observés dans la plupart des études sans pour autant qu'une association avec les événements indésirables puisse être établie, la posologie et l'innocuité de la lidocaïne par voie intraveineuse devrait être déterminée avant de recommander son utilisation.

Postoperative pain control is a major concern in anesthesia, especially in the emerging field of fast-track surgery.<sup>1,2</sup> Anesthesiologists can choose among different interventions for postoperative pain control, but there is little evidence that different pain intervention strategies impact clinically important postoperative outcomes.<sup>3</sup>

Many years ago, intravenous infusion of lidocaine (IVLI) was proposed as an anesthesia adjuvant, but this approach has gained in interest in the medical literature only recently.<sup>4</sup> Lidocaine has been described as having analgesic,<sup>5</sup> anti-hyperalgesic,<sup>6</sup> and anti-inflammatory<sup>5,7</sup> properties. Two systematic reviews evaluating the effect of IVLI for pain relief in patients with chronic neuropathic pain or burn injury showed a potential benefit. However, its effect on postoperative outcomes is not well understood.<sup>8,9</sup> Recently, two systematic reviews evaluated the effect of perioperative use of IVLI as an adjuvant to general anesthesia. However, one review was limited to abdominal surgery and did not include an evaluation of potential side effects of IVLI,<sup>10</sup> while the other review included only a small number of studies due to a limited search strategy.<sup>11</sup>

Thus, we undertook a systematic review of randomized controlled trials to evaluate the efficacy and safety of perioperative IVLI on postoperative outcomes in all types of surgery requiring general anesthesia.

## Methods

### Search strategy

We electronically searched Ovid Medline (1950 - July 2010, Week 1), Embase (1974 - July 2010, Week 1), the Cochrane Central Register of Controlled Trials, and the Scopus database. No restrictions were used in language or type of publication. To identify relevant grey literature, we

used the OpenSIGLE repository and three public search engines, i.e., Google Scholar, Intute, and the Trip databases. The search strategy was developed for Medline and adapted for each database using the same keywords. The keywords and MESH (EMTREE) terms used were divided in two main categories: 1) groups of keywords for lidocaine and 2) groups of keywords for surgery/anesthesia. We also used specific filters in Medline<sup>12</sup> and Embase<sup>13</sup> to limit our search to randomized control trials (RCTs). This search strategy was designed and peer-reviewed by co-investigators prior to its execution. The complete search strategy used in Medline is presented in the Appendix. We reviewed the bibliographies of all included studies to identify additional relevant publications.

### Study selection

We included RCTs that evaluated the efficacy on postoperative outcomes of administering IVLI in adults ( $\geq 18$  yr old) during general anesthesia. We included all comparator groups, including placebo and usual care.

### Data abstraction

We developed a standardized data abstraction form. Following pilot testing of the form, data were abstracted independently by two investigators (L.V. and D.C.), and disagreements were resolved by consensus or by a third party (A.F.T.). Citations from the grey literature were adjudicated by a single reviewer (L.V.). If important data were missing or were ambiguous, corresponding authors were contacted to obtain additional information.

### Outcome measures and data collected

Our primary outcomes were pain control, as assessed by visual analog scales or the equivalent, and the use of opioids. Secondary outcomes were mortality, postanesthesia care unit (PACU) and hospital length of stay, ileus recovery time (as defined by time to first flatus and/or feces), incidence of nausea or vomiting, the use of volatile anesthetics, and adverse events.

For each selected study, we collected the following population characteristics: age, sex, weight, American Society of Anesthesiologists physical status, type and length of surgery, chronic use of opioids, and factors potentially affecting lidocaine metabolism (i.e., hepatic disease and chronic use of propranolol). The study intervention characteristics collected were bolus dose, infusion rate, length of infusion, timing of infusion, total dose, and mean plasma lidocaine concentration. We also noted relevant co-interventions, such as local or regional anesthesia, including opioids or other anesthetic agents. Recorded

adverse events included plasma lidocaine concentration  $>5 \mu\text{g}\cdot\text{mL}^{-1}$  allergic reaction, neurological events (seizure, coma, tinnitus, numbness of the tongue, restlessness, vertigo, drowsiness, and apnea), or cardiovascular side effects (hypotension, arrhythmias). When data were not mutually exclusive for a specific adverse event, the highest incidence was used for analysis.

### Data synthesis

Pain scores were analyzed at six, 12, 24, 48, and 72 hr following surgery. When data from one of these specific time periods were not available, data from the closest time interval were used. In one study, patients were randomized into four groups: two groups received IVLI, but with a different co-intervention, and two groups received the same comparator.<sup>14</sup> Morphine equivalence was calculated for opioids when means  $\pm$  standard deviations were reported. The following equivalents were considered: 10 mg of morphine = 100  $\mu\text{g}$  of fentanyl *iv*,<sup>15</sup> 75 mg of meperidine *im*,<sup>15,16</sup> 15 mg of piritramide *iv*,<sup>17</sup> or 10  $\mu\text{g}$  of sufentanil *iv*.<sup>18</sup>

### Risk of bias assessment

The methodological quality of the included studies was evaluated by two reviewers (L.V. and D.C.) using an adaptation of the scale used by the Cochrane Collaboration<sup>19,20</sup> and the Jadad scale.<sup>21</sup> The Cochrane Risk-of-Bias assessment tool allows a qualitative evaluation of the probability of bias (low, high, unclear) in five different potential sources of bias.

### Statistical analysis

Data were analyzed with Review Manager, version 5.0 (RevMan, The Cochrane Collaboration, Oxford, United Kingdom) using random effects models. Continuous data are expressed as weighted mean difference (WMD) with 95% confidence intervals, while dichotomous data are presented as risk ratios (RR). Heterogeneity was evaluated using the  $I^2$  index.<sup>22</sup> Sensitivity analyses were performed to identify potential sources of heterogeneity based on the following subgroups determined a priori: methodological quality (Jadad score  $\geq 3$  vs  $<3$ , placebo or other comparator, blinding), type of surgery (cardiac, abdominal, open, or laparoscopic), intervention regimen (bolus prior to infusion, infusion rate  $\geq 3 \text{ mg}\cdot\text{kg}^{-1}\cdot\text{hr}^{-1}$ , infusion prolonged after surgery, infusion during outcome measurement), and source of sponsorship.

We conducted the study and prepared the manuscript following the guidelines from the PRISMA statement for systematic reviews and meta-analyses ([www.prisma-statement.org](http://www.prisma-statement.org)).

## Results

### Literature search

We extracted 5,072 records, excluding duplicates, from the four main databases searched (Embase, Medline, Cochrane, and Scopus) (Fig. 1), and from those we selected 32 citations for inclusion. Three studies were excluded because none of the outcomes of interest were evaluated. Searching the grey literature through OpenSIGLE and the three public search engines did not identify additional studies. Thus, 29 studies enrolling a total of 1,754 patients were ultimately included in this systematic review.

### Description of included studies

All studies were written in English except one in German<sup>23</sup> and one in Spanish.<sup>24</sup> Seven studies originated in the USA,<sup>25-31</sup> one in Belgium,<sup>32</sup> two in Taiwan,<sup>14,33</sup> three in Germany,<sup>23,34,35</sup> one in New Zealand,<sup>36</sup> three in Sweden,<sup>37-39</sup> two in China,<sup>40,41</sup> one in France,<sup>42</sup> three in Canada,<sup>43-45</sup> one in Mexico,<sup>24</sup> two in Saudi Arabia,<sup>46,47</sup> one in Israel,<sup>48</sup> one in the Republic of Korea<sup>49</sup> and one in Finland.<sup>50</sup> Studies were conducted in patients undergoing abdominal, cardiac, thoracic, orthopedic, or urologic

surgery (Table 1). Source of sponsorship was not mentioned in 11 studies,<sup>23-27,29,42,45-48</sup> while other studies received grants from foundations, national councils, or universities. No study reported industry sponsorship. Descriptions of the 29 studies are summarized in Table 1.

### Risk of bias assessment

Twelve studies (46%) had a low risk of bias according to the five potential sources of bias considered in the Cochrane Risk-of-Bias assessment tool (Table 2). Two studies had a high risk of bias, as they were not blinded.<sup>28,50</sup> In contrast, 23 (79%) studies with a score  $\geq 3$  using the Jadad scale were considered of high methodological quality.<sup>51</sup> Twenty-six (90%) studies were placebo-controlled blinded studies.<sup>14,23-27,29-43,45-49</sup>

### Primary outcomes

#### Postoperative pain

Postoperative pain was evaluated in 19 studies and at different time periods, from one minute to 96 hr following surgery. Most studies presented mean pain

**Fig. 1** Results of the search strategy

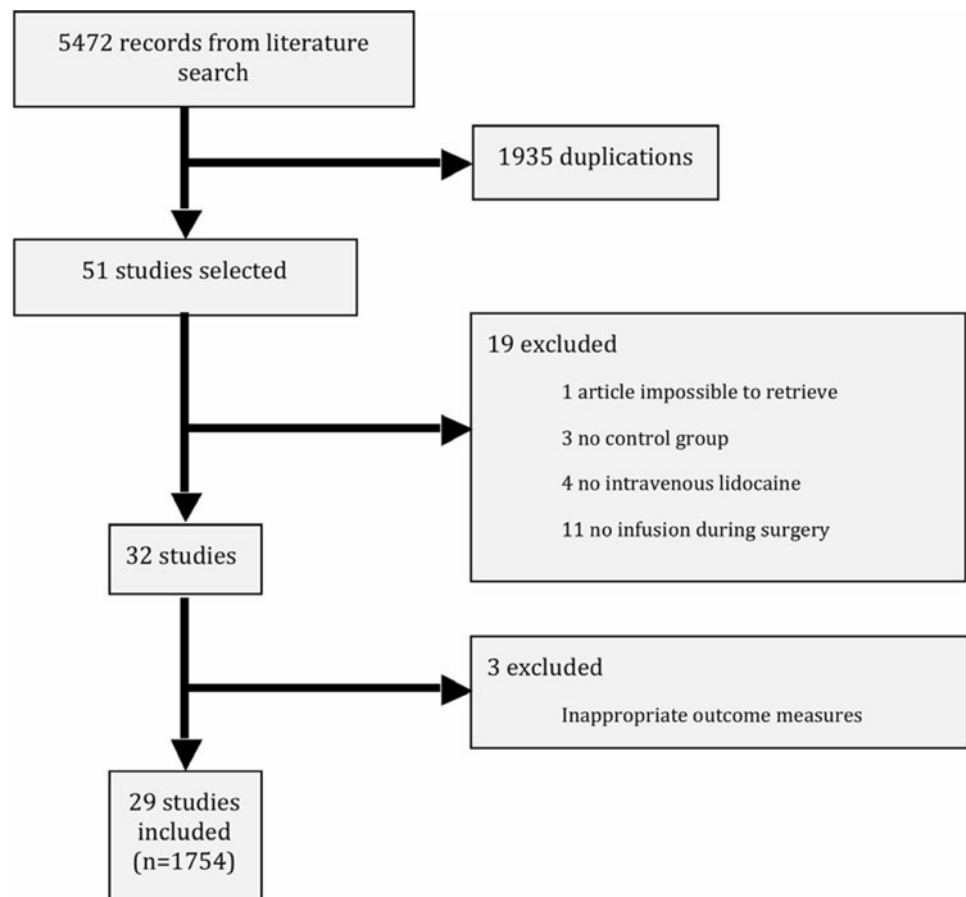


Table 1 Description of included studies

Studies	Population		Surgery	Intervention		Total dose	Duration of infusion	Outcomes measured (main outcome underlined)	Follow-up period	
	N	Groups		Age	Bolus					Infusion
Knight <i>et al.</i> (1980) <sup>28</sup>	40	Lidocaine (n = 20)	CABG and valve surgery	NM	6 mg·kg <sup>-1</sup>	1,373 ± 903.4 mg	NA	HD during surgery, PLC	End of surgery	
		Morphine (n = 20)		NM	0.5–1 mg·kg <sup>-1</sup>					
Kasten <i>et al.</i> (1982) <sup>29</sup>	20	Lidocaine (n = 10)	CABG	58.1 ± 6.3	3 mg·kg <sup>-1</sup>	851 ± 160 mg	NA	HD during surgery PLC.	30 min PO	
		Saline (n = 10)		55.1 ± 6.0	Same volume					
Cassuto <i>et al.</i> (1985) <sup>38</sup>	20	Lidocaine (n = 10)	Cholecystectomy	44 (30–67)*	100 mg	3,190 mg (3,130–3,280) mg	105 min (75–150)* + 24 hr PO	POP, meperidine consumption, PLC, HD, NoVo	48 hr PO	
		Saline (n = 10)		55 (34–68)*	Same volume					112 min (68–150)* + 24 hr PO
		Lidocaine (n = 18)		54 ± 8.5	100 mg					
Wallin <i>et al.</i> (1987) <sup>39</sup>	38	Lidocaine (n = 18)	Cholecystectomy	49 ± 8.9	Same volume	0	Same + 102 ± 35.8 min	Autonomic response during surgery, meperidine consumption, HD, AE, NoVo	2 days PO	
		Saline (n = 20)		55 ± 11.6	100 mg					109 ± 27.1 min + 24 hr PO
Rimbäck <i>et al.</i> (1990) <sup>37</sup>	30	Lidocaine (n = 15)	Elective cholecystectomy	51 ± 11.6	Same volume	0	104 ± 31.0 min + 24 hr PO	PO colonic inhibition, bowel function, HD, POP, NoVo, AE	3 days PO	
		Saline (n = 15)		32.2 ± 10.7	1.5 mg·kg <sup>-1</sup>					724.5 ± 240.8 mg
Striebel <i>et al.</i> (1992) <sup>23</sup>	42	Lidocaine (n = 20)	Tonsillectomy	31.1 ± 10.6	Same volume	0	Same	POP, PO sedation, HD, time to extubation, ICU-LOS, hr-LOS, myocardial infarction, PLC	Hospital discharge	
		Lidocaine (n = 44)		62.7	1.5 mg·kg <sup>-1</sup>					NA
Insler <i>et al.</i> (1995) <sup>36</sup>	100	Saline (n = 20)	CABG	31.1 ± 10.6	Same volume	0	Same	POP, PO sedation, HD, time to extubation, ICU-LOS, hr-LOS, myocardial infarction, PLC	Hospital discharge	
		Lidocaine (n = 44)		62.7	1.5 mg·kg <sup>-1</sup>					NA
Groudine <i>et al.</i> (1998) <sup>27</sup>	40	Placebo (n = 45)	Radical retropubic prostatectomy	Mean 64.7 Range (47–74)	Same volume	NA	NA + 1 hr PO	PO bowel function, H-LOS, analgesic consumption, POP, PLC	Hospital discharge	
		Lidocaine (n = 18)		60 ± 8	1 mg·kg <sup>-1</sup>					NA
Rinne <i>et al.</i> (1998) <sup>50</sup>	100	Saline (n = 20)	CABG	61 ± 8	Same volume	0	0	Cardioprotection, cardiac function and HD, PLC	3 days PO	
		Lidocaine (n = 50)		56.9 ± 8.9	1 mg·kg <sup>-1</sup>					NA
Mitchell <i>et al.</i> (1999) <sup>36</sup>	65	Lidocaine (n = 28)	Left heart valve surgery	54.4 ± 9.7	Same volume	Same	Same	Cerebral protection, neuropsychologic tests, PLC, HD, ICU-LOS, ventilation, hepatic function, renal dysfunction, H-LOS	6 months PO	
		Dextrose 5% (n = 27)		54.4 ± 9.7	Same volume					Same

Table 1 continued

Studies	N	Population Groups	Surgery	Intervention		Total dose	Duration of infusion	Outcomes measured (main outcome underlined)	Follow-up period
				Age	Bolus				
Wang <i>et al.</i> (2002) <sup>41</sup>	118	Lidocaine (n = 43)	CABG	57.8 ± 9.7	1.5 mg·kg <sup>-1</sup> + 4 mg·kg <sup>-1</sup> (priming of CPB)	994.7 ± 236.8 mg	149.4 ± 59.2 min	<u>PO cognitive dysfunction, ICU-LOS, ICU ventilation, ICU intubation, HD, H-LOS, transfusion, PLC</u>	9 days PO
Koppert <i>et al.</i> (2004) <sup>34</sup>	43	Saline (n = 45) Lidocaine (n = 20)	Major abdominal surgery	59.3 ± 9.4 58 ± 12	Same volume 1.5 mg·kg <sup>-1</sup>	0 816.5 ± 238.1 mg	132.2 ± 53.0 min 6.2 ± 2.1 hr	<u>POP, morphine consumption, PLC, bowel function</u>	Hospital discharge
Wu <i>et al.</i> (2005) <sup>14</sup>	100	DM IM + saline iv (n = 25) CMP IM + lidocaine iv (n = 25) CMP IM, saline iv (n = 25) DM IM + Lidocaine iv (n = 25)	Laparoscopic cholecystectomy	56 ± 12 52.4 ± 10.2	Same volume DM 40 mg (20 mg CMP) IM 30 min pre-incision	0 344.2 ± 28.1 mg	6.2 ± 1.9 hr Infusion 30 min before incision + 81.8 ± 8.6 min Infusion 30 min before incision + 81.4 ± 9.1 min	<u>POP, meperidine consumption, AE, bowel function</u>	48 hr PO
Kuo <i>et al.</i> (2006) <sup>33</sup>	60	Lidocaine iv, saline epidural (n = 20) Saline iv and saline epidural (n = 20)	Colorectal surgery	63 (50–75) 62 (46–85)	2 mg·kg <sup>-1</sup> Same volume	700.5 ± 41.2 mg	30 min preop 157.8 ± 13.4 min 30 min preop + 150.8 ± 11.5 min	<u>Immune response, POP, bowel function, analgesic consumption, bowel function, H-LOS, No/Vo</u>	Hospital discharge
Kaba <i>et al.</i> (2007) <sup>32</sup>	45	Lidocaine (n = 20) Saline (n = 20)	Laparoscopic colectomy	57 ± 17 52 ± 13	1.5 mg·kg <sup>-1</sup> Same volume	3,007.1 ± 120.6 mg	169 ± 47 min + 24 hr PO 170 ± 48 min + 24 hr PO	<u>Acute rehabilitation, POP, piritramide consumption, PO fatigue score, bowel function, H-LOS, No/Vo, Biochemical markers, immune response, PLC, HD</u>	Hospital discharge
Herröder <i>et al.</i> (2007) <sup>35</sup>	66	Lidocaine (n = 31) Saline (n = 29)	Colorectal surgery	56.1 ± 11.8 56.9 ± 12.0	1.5 mg·kg <sup>-1</sup> Same volume	982.5 ± 119.0 mg	194.3 ± 59.48 min + 4 hr PO 210.5 ± 96.29 min + 4 hr PO	<u>H-LOS, PACU-LOS, bowel function, POP, opioid consumption, immune response, PLC</u>	Hospital discharge
Martin <i>et al.</i> (2008) <sup>42</sup>	60	Lidocaine (n = 28) Saline (n = 30)	Hip arthroplasty	64 ± 9 6 ± 13	1.5 mg·kg <sup>-1</sup> Same volume	NM NM	30 min before incision and 1 hr PO Same	<u>Morphine consumption, POP, opioid consumption, hip flexion angle, pressure pain perception, PLC, H-LOS</u>	3 months PO

Table 1 continued

Studies	N	Population		Intervention		Surgery	Age	Bolus		Infusion	Total dose	Duration of infusion	Outcomes measured (main outcome underlined)	Follow-up period
		Groups		Groups				Groups						
Lauwick <i>et al.</i> (2008) <sup>44</sup>	50	Lidocaine (n = 25)	Endocholecystectomy	50.2 ± 15.5	1.5 mg·kg <sup>-1</sup>		50.2 ± 15.5	1.5 mg·kg <sup>-1</sup>	2 mg·kg <sup>-1</sup> ·hr <sup>-1</sup>	234.15 ± 48.3 mg	60 (50–65)* min	Fentanyl consumption in PACU, No in PACU, POP, PACU-LOS	24 hr after hospital discharge	
		No infusion (n = 24)		53.8 ± 16.4	nothing		53.8 ± 16.4	nothing	nothing	0	70 (57.5–80)* min			
El-Tahan <i>et al.</i> (2009) <sup>46</sup>	90	Lidocaine (n = 45)	Cesarian Delivery	28.1 ± 4.2	1.5 mg·kg <sup>-1</sup>		28.1 ± 4.2	1.5 mg·kg <sup>-1</sup>	1.5 mg·kg <sup>-1</sup> ·hr <sup>-1</sup>	363.7 ± 10.4 mg	30 min before incision and 1 hr PO surgery: 43.2 ± 5.5 min	Surgical stress response and neonatal outcome, uterine tone, PLC, AE	24 hr PO	
		Saline (n = 45)		26.5 ± 4.6	Same volume		26.5 ± 4.6	Same volume	Same volume	0	30 min before incision and 1 hr PO surgery: 40.8 ± 6.6 min			
Mathew <i>et al.</i> (2009) <sup>30</sup>	277	Lidocaine (n = 88)	CABG and valve surgery	61.7 ± 11.9	1 mg·kg <sup>-1</sup>		61.7 ± 11.9	1 mg·kg <sup>-1</sup>	4 mg·min <sup>-1</sup> × 1 hr, 2 mg·min <sup>-1</sup> × 1 hr, 1 mg·min <sup>-1</sup> × 46 hr	3,206.1 ± 18.7 mg	48 hr	PO cognitive function, PLC, immune response, AE	1 yr PO	
		Saline (n = 94)		61.4 ± 13.9	Same volume		61.4 ± 13.9	Same volume	Same volume	0	Same			
Lauwick <i>et al.</i> (2009) <sup>43</sup>	40	Lidocaine (n = 20)	Laparoscopic prostatectomy	60 ± 6	1.5 mg·kg <sup>-1</sup>		60 ± 6	1.5 mg·kg <sup>-1</sup>	2 mg·kg <sup>-1</sup> ·hr <sup>-1</sup> for the surgery, then 1 mg·kg <sup>-1</sup> ·hr <sup>-1</sup> for 24 hr	2,705.8 ± 444.3 mg	322.5 (283.5–349.0)* min	Functional walking capacity, morphine consumption, PO bowel function, POP	Hospital discharge	
Juárez-Pichardo <i>et al.</i> (2009) <sup>24</sup>	45	Lidocaine (n = 15)	Laparoscopic cholecystectomy	59 ± 8	Same volume		59 ± 8	Same volume	Same volume	0	300.0 (272.5–322.5)* min		100 min PO	
		Placebo (n = 15)		42 ± 12	Same volume		42 ± 12	Same volume	Same volume	0	NM			
Yardeni <i>et al.</i> (2009) <sup>48</sup>	65	Lidocaine (n = 30)	Abdominal hysterectomy	55.9 ± 5.6	2 mg·kg <sup>-1</sup>		55.9 ± 5.6	2 mg·kg <sup>-1</sup>	1.5 mg·kg <sup>-1</sup> ·hr <sup>-1</sup>	259.9 ± 11 mg	109 ± 8.43 min	POP, analgesia consumption, immune response	72 hr PO	
		Saline (n = 30)		53.4 ± 8.2	Same volume		53.4 ± 8.2	Same volume	Same volume	0	106 ± 14.6 min			
McKay <i>et al.</i> (2009) <sup>31</sup>	67	Lidocaine (n = 29)	Ambulatory surgery	43 ± 15	1.5 mg·kg <sup>-1</sup>		43 ± 15	1.5 mg·kg <sup>-1</sup>	2 mg·kg <sup>-1</sup> ·hr <sup>-1</sup>	517 ± 203 mg	NM	PACU-LOS, POP, PO opioid consumption, No/Vo, PLC	24 hr after hospital discharge	
		Saline (n = 27)		46 ± 15	Same volume		46 ± 15	Same volume	Same volume	0	NM			
Cui <i>et al.</i> (2010) <sup>40</sup>	45	Lidocaine (n = 20)	Thoracic surgery	54 ± 9	0		54 ± 9	0	33 µg·kg <sup>-1</sup> ·min <sup>-1</sup>	411.8 ± 85.8 mg	192 ± 40 min	Morphine consumption and POP in PACU and ward, propofol effect-site concentration, PO sedation/agitation, PLC, AE	7 days PO	
		Saline (n = 20)		51 ± 10	0		51 ± 10	0	Same volume	0	204 ± 41 min			
Saadawy <i>et al.</i> (2010) <sup>47</sup>	120	Lidocaine (n = 40)	Laparoscopic cholecystectomy	41.2 ± 8.4	2 mg·kg <sup>-1</sup>		41.2 ± 8.4	2 mg·kg <sup>-1</sup>	2 mg·kg <sup>-1</sup> ·hr <sup>-1</sup>	374.1 ± 42.1 mg	80.3 ± 15.8 min	Morphine consumption in first 24 hr, POP, quality of sleep	24 hr PO	
		Saline (n = 40)		42.1 ± 8.5	25 mL		42.1 ± 8.5	25 mL	50 mL·hr <sup>-1</sup>	0	79.5 ± 16.8 min	PO bowel function, PLC, AE		
Bryson <i>et al.</i> (2010) <sup>45</sup>	93	Lidocaine (n = 44)	Abdominal hysterectomy	46.3 ± 5.7	1.5 mg·kg <sup>-1</sup>		46.3 ± 5.7	1.5 mg·kg <sup>-1</sup>	3 mg·kg <sup>-1</sup> ·hr <sup>-1</sup>	475.2 ± 102.4 mg	105.0 ± 29.1 min	H-LOS, functional recovery, bowel function, opioid consumption, quality of recovery	7 days PO	
		Saline (n = 46)		45.4 ± 6.4	Same volume		45.4 ± 6.4	Same volume	Same volume	0	108.0 ± 35.4 min			
Kim <i>et al.</i> (2010) <sup>49</sup>	99	Lidocaine (n = NA)	CABG	NA	1.5 mg·kg <sup>-1</sup>		NA	1.5 mg·kg <sup>-1</sup>	2 mg·kg <sup>-1</sup> ·hr <sup>-1</sup>	NA	NA	Myocardial injury, AE	72 hr PO	
		Saline (n = NA)		NA	Same volume		NA	Same volume	Same volume	NA	NA			

Table 1 continued

Studies	N	Population Groups	Intervention			Total dose	Duration of infusion	Outcomes measured (main outcome underlined)	Follow-up period
			Surgery	Age	Bolus				
Swenson <i>et al.</i> (2010) <sup>25</sup>	45	Lidocaine ( <i>n</i> = 22)	Open colon resection	52 (40–62)*	<1.5 mg·kg <sup>-1</sup>	NA	4,194 ± 1,694 min	POP and PO bowel function, PLC, AE, opioid consumption, H-LOS	Hospital discharge
		Epidural ( <i>n</i> = 20)		49 (36–54)*	0	0	5,496 ± 2,463 min		

\*Data presented as median and 25–75% interquartile range

CABG Coronary artery bypass graft; PLC plasma lidocaine concentration; H-LOS hospital length of stay; PACU-LOS postanaesthesia care unit length of stay; HD hemodynamic; POP postoperative pain; PO postoperative; VAS visual analogue scale; AE adverse events; No/No nausea/vomiting; IM intramuscular; DM dextromethorphan; CMP chlorpheniramine maleate; NM no mention; CTB cardiopulmonary bypass; NA not available

scores,<sup>14,24,26,31–33,35,38,40,42,45,47,48</sup> while five studies presented median pain score.<sup>23,25,34,43,44</sup> The data from the studies reporting medians could not be included in the pooled analyses. One study<sup>27</sup> evaluated pain with an adapted scale that could not be pooled with other data. Eighteen studies<sup>14,23–27,31–35,38,42–45,47,48</sup> evaluated pain scores at rest, seven during cough,<sup>14,32,33,35,43,47,48</sup> and five during movement.<sup>32,34,42,43,45</sup> One study<sup>31</sup> evaluated pain 24 hr after the surgery during rest and activity together and therefore was not included in our analyses.

#### Postoperative pain at rest

Following surgery, the WMD between groups for pain control at rest was statistically significant at six hours (nine studies, *n* = 579, WMD −8.70, 95% CI −16.19 to −1.21; *I*<sup>2</sup> = 89%) and at 12 hr (six studies, *n* = 389, WMD −6.52, 95% CI −12.12 to −0.91; *I*<sup>2</sup> = 79%) but not at 24, 48, or 72 hr (Fig. 2). Although a statistically significant difference was not observed between groups after 12 hr, a trend towards improved pain control at rest was observed among patients who received IVLI during the perioperative period. Sensitivity analyses showed that the benefit at 12 hr and prior and the observed trend after 12 hr may be explained by abdominal surgeries (Fig. 3).

#### Pain during cough

After surgery, the WMDs for pain control during cough were statistically significant among the IVLI and control groups at six hours (seven studies, *n* = 410, WMD −11.19, 95% CI −17.73 to −4.65; *I*<sup>2</sup> = 84%), 12 hr (four studies, *n* = 280, WMD −7.44, 95% CI −14.24 to −0.63; *I*<sup>2</sup> = 84%), and 24 hr (six studies, *n* = 380, WMD −6.94, 95% CI −12.87 to −1.01; *I*<sup>2</sup> = 78%) favouring pain reduction for IVLI groups (Fig. 2). However, despite a clear trend in pain reduction, the WMDs were not statistically different at 48 or 72 hr. All studies were performed in abdominal surgery populations, except one<sup>40</sup> that evaluated pain during cough at six hours after thoracic surgery. Sensitivity analyses showed consistent findings.

#### Pain during movement

Pain during movement after surgery was decreased significantly with IVLI at six hours (two studies, *n* = 130, WMD −9.56, 95% CI −17.31 to −1.80; *I*<sup>2</sup> = 45%) (Fig. 2). No difference was observed at 24 or 72 hr. The only study that assessed pain during movement 12 hr after surgery observed no difference between groups.<sup>32</sup> In abdominal surgery only, pain during movement was not significantly reduced by IVLI (Fig. 3).



**Table 2** Risk of bias and methodological quality assessment of included studies

Study	Rating based on Cochrane risk of bias tool							Jadad scale			
	Sequence generation	Allocation concealment	Blinding	Incomplete outcome data	Selective outcome reporting	Other bias	Summary	Total	Randomization	Blinding	Attrition information (withdrawal and drop out)
Knight <i>et al.</i> (1980) <sup>28</sup>	Unclear	Unclear	High	Unclear	Low	Unclear	High	1	1	0	0
Kasten <i>et al.</i> (1986) <sup>29</sup>	Unclear	Low	Low	Unclear	Low	Low	Unclear	3	1	2	0
Cassuto <i>et al.</i> (1985) <sup>38</sup>	Unclear	Unclear	Low	Unclear	Low	Low	Unclear	2	1	1	0
Wallin <i>et al.</i> (1987) <sup>39</sup>	Unclear	Unclear	Low	Unclear	Low	Low	Unclear	2	1	1	0
Rimback <i>et al.</i> (1990) <sup>37</sup>	Unclear	Unclear	Low	Unclear	Low	Low	Unclear	2	1	1	0
Striebel <i>et al.</i> (1992) <sup>23</sup>	Unclear	Unclear	Unclear	Low	Low	Unclear	Unclear	3	1	1	1
Insler <i>et al.</i> (1995) <sup>26</sup>	Low	Low	Low	Low	Low	Low	Low	5	2	2	1
Groudine <i>et al.</i> (1998) <sup>27</sup>	Low	Unclear	Low	Low	Low	Low	Unclear	4	2	1	1
Rinne <i>et al.</i> (1998) <sup>50</sup>	Unclear	Unclear	High	Low	Low	Unclear	High	2	1	0	1
Mitchell <i>et al.</i> (1999) <sup>36</sup>	Unclear	Unclear	Low	Low	Low	Low	Unclear	4	1	2	1
Wang <i>et al.</i> (2002) <sup>41</sup>	Unclear	Unclear	Low	Low	Low	Low	Unclear	3	1	1	1
Koppert <i>et al.</i> (2004) <sup>34</sup>	Low	Low	Low	Low	Low	Low	Low	5	2	2	1
Wu <i>et al.</i> (2005) <sup>14</sup>	Low	Low	Low	Low	Low	Low	Low	5	2	2	1
Kuo <i>et al.</i> (2006) <sup>33</sup>	Low	Unclear	Low	Unclear	Low	Low	Unclear	4	2	2	0
Kaba <i>et al.</i> (2007) <sup>32</sup>	Low	Low	Low	Low	Low	Low	Low	5	2	2	1
Herroeder <i>et al.</i> (2007) <sup>35</sup>	Low	Low	Low	Low	Low	Low	Low	5	2	2	1
Martin <i>et al.</i> (2008) <sup>42</sup>	Low	Low	Low	Low	Low	Low	Low	5	2	2	1
Lauwick <i>et al.</i> (2008) <sup>44</sup>	Low	Low	Low	Low	Low	Low	Low	5	2	2	1
El-Tahan <i>et al.</i> (2009) <sup>46</sup>	Low	Low	Low	Low	Low	Low	Low	5	2	2	1
Mathew <i>et al.</i> (2009) <sup>30</sup>	Low	Low	Low	Low	Low	Low	Low	5	2	2	1
Lauwick <i>et al.</i> (2009) <sup>43</sup>	Low	Low	Unclear	Low	Low	Low	Unclear	3	2	0	1
Juárez-Pichardo <i>et al.</i> (2009) <sup>24</sup>	Low	Low	Low	Low	Low	Low	Low	5	2	2	1
Yardeni <i>et al.</i> (2009) <sup>48</sup>	Unclear	Low	Unclear	Low	Low	Unclear	Unclear	3	1	1	1
McKay <i>et al.</i> (2009) <sup>31</sup>	Low	Unclear	Unclear	Unclear	Low	Unclear	Unclear	3	2	1	0
Cui <i>et al.</i> (2010) <sup>40</sup>	Low	Low	Low	Low	Low	Low	Low	5	2	2	1
Saadawy <i>et al.</i> (2010) <sup>47</sup>	Low	Low	Low	Low	Unclear	Low	Unclear	5	2	2	1
Bryson <i>et al.</i> (2010) <sup>45</sup>	Low	Low	Low	Low	Low	Low	Low	5	2	2	1
Kim <i>et al.</i> (2010) <sup>49</sup>	NA	NA	Unclear	NA	NA	NA	Unclear	NA	1	1	NA
Swenson <i>et al.</i> (2010) <sup>25</sup>	Low	Low	Low	Unclear	Low	Unclear	Unclear	5	2	2	1

NA Not available

### *Morphine equivalent administration during the postoperative period*

Seventeen studies described the administration of analgesic agents during the postoperative period (from PACU to eight days following surgery). Morphine equivalent administration could be calculated for 12 of these studies.<sup>14,26,27,31,34,35,37-39,44,45,47</sup> The mean morphine dose received in the control group was 46.4 mg. A reduction in morphine of 8.4 mg was observed in the IVLI group compared with the control group (12 studies,  $n = 690$ , WMD  $-8.44$ , 95% CI  $-11.32$  to  $-5.56$ ;  $I^2 = 18\%$ ). This reduction was explained mainly by the type of surgery

(abdominal vs non-abdominal) (Fig. 3). In the four studies presenting median opioid doses, two studies observed results consistent with these findings<sup>32,40</sup> while two studies observed contradicting results.<sup>25,42</sup>

### Secondary outcomes

#### *Mortality*

Six studies presented mortality data.<sup>26,28,30,36,41,50</sup> Mortality in the IVLI group (0.4%) was not significantly different from that in the control group (0.5%) (six studies,  $n = 611$ , RR: 0.87, 95% CI 0.42-1.80;  $I^2 = 0\%$ ).

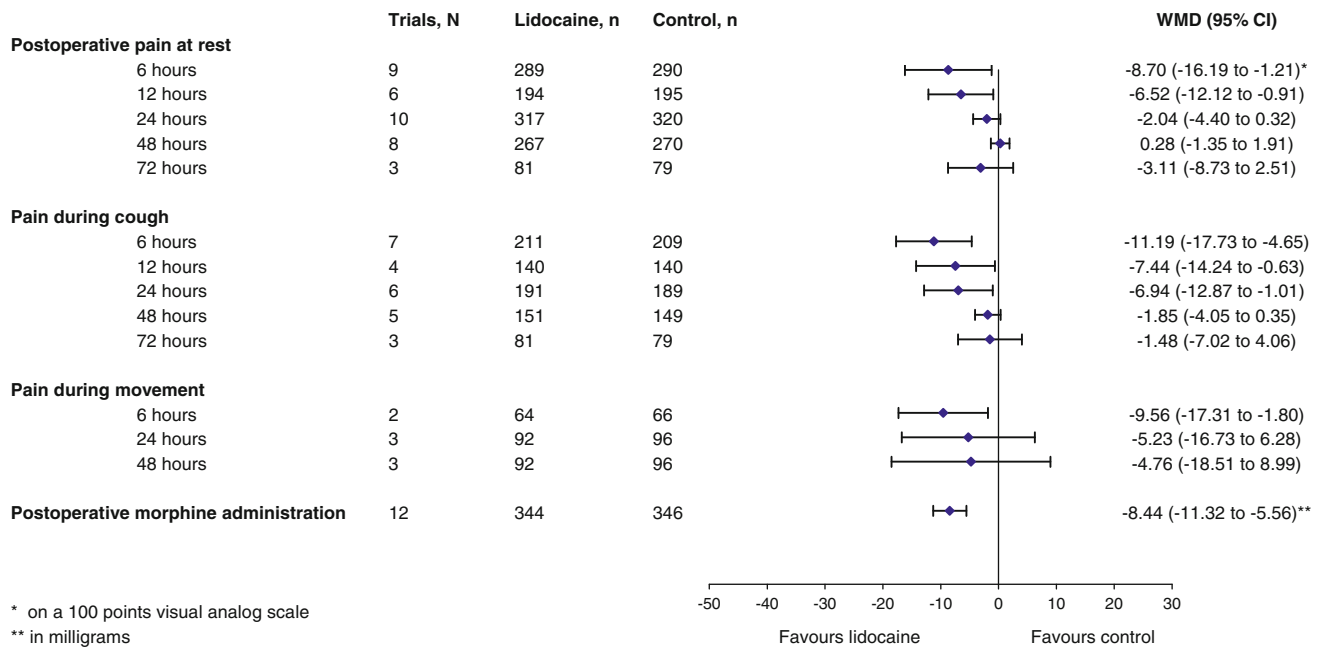


Fig. 2 Postoperative pain and opioid requirement

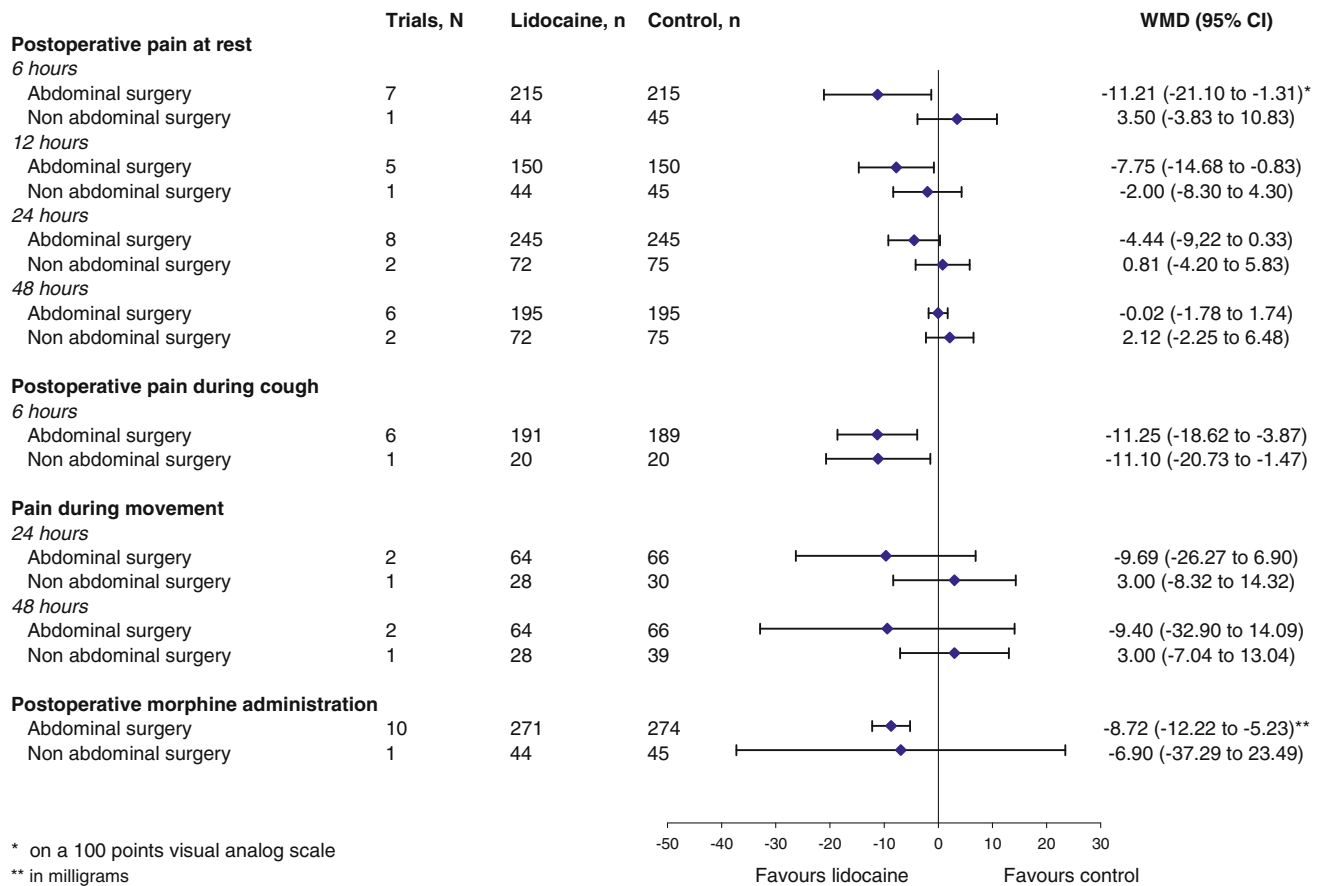


Fig. 3 Sensitivity analyses by type of surgery

### *Nausea or vomiting*

Thirteen studies assessed the incidence of postoperative nausea or vomiting<sup>25,31-34,37,38,40,43-47</sup> (Table 3). Pooled results showed that the incidence was significantly lower in patients who received IVLI (25%) than in those who did not (35%) (12 studies,  $n = 617$ , RR: 0.71, 95% CI 0.57-0.90;  $I^2 = 0\%$ ).

### *Length of stay*

The length of stay in the PACU was evaluated in only two studies.<sup>31,35</sup> A comparable length of stay was observed in the IVLI groups and control groups in both studies.

Pooled results of hospital length of stay from nine studies showed a statistically significant reduction of about four hours for patients who received IVLI (nine studies,  $n = 539$ , WMD  $-0.17$  day, 95% CI  $-0.41$  to  $0.07$ ;  $I^2 = 8\%$ ). Among studies reporting median length of stay, two studies observed a significant difference between groups in terms of hospital length of stay: two days (interquartile range [IQR] 2-3 days) and seven days (IQR 6-8 days) for the IVLI groups and three days (IQR 3-4 days) and eight days (IQR 7-11 days) for the control groups, respectively.<sup>32,35</sup> However, in three other studies, no difference was observed between groups.<sup>25,30,44</sup>

### *Bowel function*

Only studies conducted in abdominal surgery populations evaluated bowel function. Nine studies presented data on the time to first flatus,<sup>14,25,27,32,33,35,37,43,47</sup> while seven studies presented data on time to first feces<sup>25,27,32,34,35,37,43</sup> (Table 3).

### *Time to first flatus*

Pooled analysis demonstrated a significant reduction of approximately eight hours in favour of IVLI (seven studies,  $n = 388$ , WMD  $-7.62$  hr, 95% CI  $-10.78$  to  $-4.45$ ;  $I^2 = 59\%$ ). All studies were conducted in cases of abdominal surgery, but statistical heterogeneity was explained by the type of abdominal surgery (open vs laparoscopic) (open surgery: four studies,  $n = 168$ , WMD  $-11.41$  hr, 95% CI  $-14.36$  to  $-8.45$ ;  $I^2 = 0\%$  vs laparoscopic surgery: three studies,  $n = 220$ , WMD  $-5.12$  hr, 95% CI  $-6.65$  to  $-3.59$ ;  $I^2 = 0\%$ ). One additional study<sup>32</sup> also showed a median reduction in time to first flatus in the IVLI group (17 hr, IQR 11-24 hr) compared with the control group (28 hr, IQR 25-33 hr), while another study showed no statistical difference among groups.<sup>25</sup>

### *Time to first feces*

In the IVLI group, a statistically significant reduction of approximately 14 hr in the time to first feces was observed in the pooled analysis of studies<sup>27,35,37,43</sup> (four studies,  $n = 168$ , WMD  $-10.71$  hr, 95% CI  $-16.14$  to  $-5.28$ ;  $I^2 = 0\%$ ). Data from three additional studies could not be pooled because mean times were not provided or could not be calculated.<sup>25,32,34</sup> However, the median time to first feces in two of the studies was comparable with the results of the pooled WMD, and the third study showed no statistical differences between groups.<sup>25</sup>

### *Administration of volatile agents*

The need for volatile agents during surgery was reported in six studies.<sup>14,29,32,33,44,47</sup> In four of the studies, a reduction in the administration of volatile agents during surgery was observed.<sup>14,32,33,47</sup>

### *Adverse events*

Among the 29 studies included in this systematic review, 20 reported adverse events (Table 4). Nineteen studies calculated plasma lidocaine levels.<sup>23,25-32,34-36,38,40-42,46,47,50</sup> A plasma concentration of  $>5 \mu\text{g}\cdot\text{mL}^{-1}$  of lidocaine was observed in eight studies,<sup>25,26,28,29,35,36,41,50</sup> six in cardiac surgery<sup>26,28,29,36,41,50</sup> and two in abdominal surgery.<sup>25,35</sup> Only three studies reported the number of patients involved (three patients in total).<sup>25,26,35</sup> There was no association between the toxic levels of lidocaine and the dose received. Among the 20 studies presenting data on adverse events, 12 studies systematically looked for cardiovascular and/or neurological adverse events.<sup>14,25,33,34,37-40,42,45-47</sup> Overall, the incidence of adverse events between the IVLI and the control groups was comparable.

## **Discussion**

In this study, we observed a significant difference in pain control at rest, during cough, or during movement with the use of IVLI in surgical patients under general anesthesia. This difference was associated mainly with studies conducted in abdominal surgery populations. Accordingly, we showed that opioid use was lower among patients who received IVLI. Again, this effect was observed primarily in patients undergoing abdominal surgery. Perioperative IVLI was associated with a shorter hospital length of stay, decreased incidence of nausea or vomiting, and faster return of bowel function, with no impact on hospital mortality. The incidence of adverse events was not well-documented, but a few studies reported critical levels of lidocaine, an observation that requires further investigation.

**Table 3** Incidence of nausea/vomiting and return of bowel function

Study	Group	Number of patients with nausea or vomiting	Bowel function	
			Time to first flatus (hr)	Time to first feces (hr)
Cassuto <i>et al.</i> (1985) <sup>38</sup>	Lidocaine ( <i>n</i> = 10)	6	NA	NA
	Control ( <i>n</i> = 10)	8	NA	NA
Rimback <i>et al.</i> (1990) <sup>37</sup>	Lidocaine ( <i>n</i> = 15)	8	38.0 ± 27.7	73.0 ± 38.7
	Control ( <i>n</i> = 15)	9	43.0 ± 19.4	93.0 ± 38.7
Striebel <i>et al.</i> (1992) <sup>23</sup>	Lidocaine ( <i>n</i> = 20)	0	NA	NA
	Control ( <i>n</i> = 20)	0	NA	NA
Groudine <i>et al.</i> (1998) <sup>27</sup>	Lidocaine ( <i>n</i> = 18)	NA	28.5 ± 13.4	61.8 ± 13.2
	Control ( <i>n</i> = 20)	NA	42.1 ± 16	73.9 ± 16.3
Koppert <i>et al.</i> (2004) <sup>34</sup>	Lidocaine ( <i>n</i> = 20)	9	NA	79 (66–84)*
	Control ( <i>n</i> = 20)	12	NA	85 (68–96)*
Wu <i>et al.</i> (2005) <sup>14</sup>	Lidocaine + DM ( <i>n</i> = 25)	NA	13.4 ± 2.1	Mean 17.8 ± 1.9
	Lidocaine + CMP ( <i>n</i> = 25)	NA	22.1 ± 1.6	
	Control (CMP) ( <i>n</i> = 25)	NA	22.9 ± 1.8	Mean 22.6 ± 1.7
	Control (DM) ( <i>n</i> = 25)	NA	22.2 ± 1.5	
Kuo <i>et al.</i> (2006) <sup>33</sup>	Lidocaine ( <i>n</i> = 20)	5	60.2 ± 5.8	NA
	Control ( <i>n</i> = 20)	9	71.7 ± 4.7	NA
Kaba <i>et al.</i> (2007) <sup>32</sup>	Lidocaine ( <i>n</i> = 20)	1	17 (11–24)*	28 (25–33)*
	Control ( <i>n</i> = 20)	4	28 (24–37)*	51 (41–70)*
Herroeder <i>et al.</i> (2007) <sup>35</sup>	Lidocaine ( <i>n</i> = 31)	NA	51 ± 20	66.6 ± 26.4
	Control ( <i>n</i> = 29)	NA	60.5 ± 29	82.1 ± 33.8
Lauwick <i>et al.</i> (2008) <sup>44</sup>	Lidocaine ( <i>n</i> = 25)	4	NA	NA
	Control ( <i>n</i> = 24)	8	NA	NA
El-Tahan <i>et al.</i> (2009) <sup>46</sup>	Lidocaine ( <i>n</i> = 45)	5	NA	NA
	Control ( <i>n</i> = 45)	7	NA	NA
Lauwick <i>et al.</i> (2009) <sup>43</sup>	Lidocaine ( <i>n</i> = 20)	1	30.3 ± 12.7	53.7 ± 12.3
	Control ( <i>n</i> = 20)	2	36.3 ± 9.2	61.6 ± 12.4
McKay <i>et al.</i> (2009) <sup>31</sup>	Lidocaine ( <i>n</i> = 29)	10	NA	NA
	Control ( <i>n</i> = 27)	13	NA	NA
Cui <i>et al.</i> (2010) <sup>40</sup>	Lidocaine ( <i>n</i> = 20)	†	NA	NA
	Control ( <i>n</i> = 20)	†	NA	NA
Saadawy <i>et al.</i> (2010) <sup>47</sup>	Lidocaine ( <i>n</i> = 40)	12	5.7 ± 2.7	NA
	Control ( <i>n</i> = 40)	10	10.8 ± 4.6	NA
Bryson <i>et al.</i> (2010) <sup>45</sup>	Lidocaine ( <i>n</i> = 44)	11	NA	NA
	Control ( <i>n</i> = 46)	23	NA	NA
Swenson <i>et al.</i> (2010) <sup>25</sup>	Lidocaine ( <i>n</i> = 22)	4	64.8 (45.6–84)*	69.6 (55.2–86.4)*
	Control ( <i>n</i> = 20)	4	38.4 (28.8–81.6)*	72.0 (40.8–108.0)*

DM Dextromethorphan; CMP chlorpheniramine maleate; NA not available

\* Data presented as medians and interquartile ranges

† Similar incidence but number of patients not provided

### Comparison with previous studies

The significant difference in the quality of pain control observed in studies involving patients who underwent abdominal surgery was also observed in two recent meta-analyses performed in this patient subgroup.<sup>10,11</sup> However,

one of these studies was limited to a specific surgical population and a specific period of evaluation (24 hr) following surgery.<sup>10</sup> On the contrary, our study evaluated the quality of pain control at five different time periods over the first 72 hr following surgery. In addition, our study was more exhaustive and methodologically rigorous and used a

**Table 4** Reported adverse events

Study	Number of patient with adverse event													
	Cardiovascular						Neurological							
	Arrhythmia		Hypotension		Seizure		Drowsiness		Tinnitus		Numbness of the tongue		Allergic reaction	
	Lidocaine	Control	Lidocaine	Control	Lidocaine	Control	Lidocaine	Control	Lidocaine	Control	Lidocaine	Control	Lidocaine	Control
Knight <i>et al.</i> 1980 <sup>28</sup>	NM	NM	NM	NM	NM	NM	NM	NM	NM	NM	NM	NM	NM	NM
Kasten <i>et al.</i> 1986 <sup>29</sup>	NM	NM	NM	NM	NM	NM	NM	NM	NM	NM	NM	NM	NM	NM
Cassuto <i>et al.</i> 1985 <sup>38</sup>	0	NM*	NM*	1	NM	NM	0	0	0	0	0	0	NM	NM
Wallin <i>et al.</i> 1987 <sup>39</sup>	0	NM	NM	0	NM	NM	2	0	0	0	0	0	NM	NM
Rimback <i>et al.</i> 1990 <sup>37</sup>	0	0	0	0	0	0	2	0	0	0	0	0	0	0
Striebel <i>et al.</i> 1992 <sup>23</sup>	0	0	0	0	0	0	0	0	0	0	0	0	0	0
Insler <i>et al.</i> 1995 <sup>26</sup>	1	2	NM*	NM*	NM	NM	NM	NM	NM	NM	NM	NM	NM	NM
Groudine <i>et al.</i> 1998 <sup>27</sup>	0	0	0	0	0	0	0	0	0	0	0	0	0	0
Rinne <i>et al.</i> 1998 <sup>50</sup>	1	1	NM	NM	NM	NM	NM	NM	NM	NM	NM	NM	0	0
Mitchell <i>et al.</i> 1999 <sup>36</sup>	7	9	11	10	NM	NM	NM	NM	NM	NM	NM	NM	0	0
Wang <i>et al.</i> 2002 <sup>41</sup>	NM	NM	26	22	NM	NM	NM	NM	NM	NM	NM	NM	NM	NM
Koppert <i>et al.</i> 2004 <sup>34</sup>	NM	NM	NM	NM	NM*	NM*	NM	4	7	NM	NM	0	NM	NM
Wu <i>et al.</i> 2005 <sup>14</sup>	2	0	NM	NM	0	0	NM	0	0	0	0	0	0	0
Kuo <i>et al.</i> 2006 <sup>33</sup>	3	0	2	2	0	0	0	0	0	0	0	0	0	0
Kaba <i>et al.</i> 2007 <sup>32</sup>	NM	NM	NM	NM	NM	NM	NM	NM	NM	NM	NM	NM	NM	NM
Herroeder <i>et al.</i> 2007 <sup>35</sup>	0	0	6	5	0	0	0	0	0	0	0	0	0	0
Martin <i>et al.</i> 2008 <sup>42</sup>	NM	NM	NM	NM	0	0	NM	0	0	NM	NM	0	0	0
Lauwick <i>et al.</i> 2008 <sup>44</sup>	NM	NM	0	0	NM	NM	NM	NM	NM	NM	NM	NM	0	0
El-Tahan <i>et al.</i> 2009 <sup>46</sup>	0	0	NM	NM	0	0	0	0	0	NM	NM	0	0	0
Mathew <i>et al.</i> 2009 <sup>30</sup>	NM	NM	NM	NM	NM	NM	NM	NM	NM	NM	NM	0	0	NM
Lauwick <i>et al.</i> 2009 <sup>43</sup>	NM	NM	NM	NM	NM	NM	NM	NM	NM	NM	NM	NM	0	0
Juárez-Pichardo <i>et al.</i> 2009 <sup>24</sup>	NM	NM	NM	NM	NM	NM	NM	NM	NM	NM	NM	NM	NM	NM
Yardeni <i>et al.</i> 2009 <sup>48</sup>	NM	NM	NM	NM	NM	NM	NM	NM	NM	NM	NM	NM	NM	NM
McKay <i>et al.</i> 2009 <sup>31</sup>	0	0	0	0	0	0	0	0	0	0	0	0	0	0
Saadawy <i>et al.</i> 2010 <sup>47</sup>	0	0	0	0	0	0	0	0	0	0	0	0	0	0
Bryson <i>et al.</i> 2010 <sup>45</sup>	0	0	0	0	†	‡	0	0	†	‡	0	0	0	0
Kim <i>et al.</i> 2010 <sup>49</sup>	NM	NM	NM	NM	NM	NM	NM	NM	NM	NM	NM	NM	NM	NM
Swenson <i>et al.</i> 2010 <sup>25</sup>	3	1	NM	NM	1	1	0	1	0	NM	NM	1	0	0

NM No mention

\* Number of patients not mentioned but similar incidence or no significant statistical difference observed between groups

† 11 patients with light-headedness or tinnitus in the intravenous lidocaine infusion group

‡ 21 patients with light-headedness or tinnitus in control group; One patient with dizziness and visual disturbance

thorough search strategy, which led to the screening of more than 5,472 citations to include 29 studies and more than 1,754 patients. In comparison, only eight studies ( $n = 360$ ) and 16 studies ( $n = 764$ ) were identified for inclusion in the previous meta-analyses, respectively.<sup>10,11</sup> In addition, studies conducted in children were included in one of these systematic reviews, a population where the biodisponibility and effect of the drug could be different.<sup>11</sup> Moreover, the standard error of mean, which several studies used as a measure of dispersion of the different outcomes, was interpreted as a standard deviation in these two meta-analyses. This interpretation would have wrongly increased the precision of the outcome measure of the included studies and, thus, the point estimate of the pooled analysis. In our study, we calculated the appropriate standard deviations before conducting the pooled analyses. This approach allowed a broader description of the effect of IVLI on pain control over a clinically significant period. Moreover, rather than focusing on only a specific subgroup of patients, we conducted a series of sensitivity analyses, including stratification by the type of surgery, allowing a more exhaustive comprehension of the potential effect of IVLI. We also conducted a systematic evaluation of potential side effects of IVLI during the perioperative setting.

It remains unknown why patients undergoing abdominal surgery may particularly benefit from IVLI. One explanation might be differences in pain mechanisms; visceral pain from abdominal surgery might be triggered by mechanisms other than non-visceral pain, such as bone and cartilage trauma in orthopedic or cardiac surgeries. Part of the discomfort and pain following abdominal surgery might also be related to postoperative ileus and nausea/vomiting. Indeed, the reduction observed in the time to bowel function recovery as well as the decreased incidence of nausea/vomiting might explain why the improvement in pain control was observed mainly in studies based on abdominal surgery.

### Limitations and strength

The main limitation of our study is related to the methodological quality of the included RCTs. First, our findings were based on small-sized single-centre RCTs. Despite the use of two different instruments to assess the potential risk of bias and methodological quality of included studies,<sup>19,21</sup> RCTs that are considered to have a low risk of bias or to be of high-methodological quality could have some important design flaws not detected by methodological evaluations. For example, some studies considered to be double-blinded did not mention if data collectors were blinded to the treatment regimen.<sup>26,29,36-39,41</sup> Second, pooled analyses

were limited by data availability in studies meeting inclusion criteria (i.e., fewer studies evaluated pain during cough or movement as opposed to at rest). Therefore, a type II error cannot be excluded in certain analyses. In addition, only median values were presented in several studies and, therefore, could not be included in the pooled analyses since the mean values could not be estimated.<sup>23,25,32,34,35,42,44</sup> Furthermore, not all planned sensitivity analyses could be performed due to insufficient available data, despite efforts made to obtain these data by contacting the corresponding authors of the studies. Thus, the observed statistical heterogeneity in certain analyses could not always be explained. Moreover, despite the fact that sensitivity analyses did not reveal a statistically significant influence as a result of dose regimen and duration of therapy, we cannot exclude the possibility of a clinically important impact on the efficacy and safety of IVLI. Indeed, the included studies made no mention of having conducted a dose-response study prior to establishing their protocol, and they made no reference regarding the need to establish the ideal dose prior to conducting the RCT. The use of non-optimal dosage regimens of IVLI in some of the included studies might have had an impact on the results observed and, thus, on the results of our meta-analysis.

The main strength of our study stands in its design aimed at presenting an exhaustive evaluation of the effect of IVLI use during the perioperative period. First, the search was systematic, including grey literature and a manual search of the references of included studies and conference proceedings. Moreover, by targeting a broad population of surgical patients, we were able to provide a clear description of both the potentially beneficial and harmful effects of this analgesic modality. In addition, sensitivity analyses determined a priori enabled us to assess sources of heterogeneity when present, and also to identify the subpopulation of patients that could potentially benefit from the therapy. Our study provides an accurate and comprehensive understanding of the effects of IVLI on perioperative outcomes, including safety issues.

In summary, IVLI as an anesthesia adjuvant during general anesthesia has the potential to improve postoperative analgesia and the efficiency of care, mainly in the context of abdominal surgeries. However, the safety of IVLI cannot be confirmed considering its association with potentially serious adverse events and the scarcity of studies that have systematically assessed the incidence of adverse events, including toxic plasmatic levels of lidocaine. Thus, before its use can be recommended, further research is required, especially where it pertains to an optimal dosage regimen and the safety of this intervention.

**Acknowledgements** We sincerely thank all authors who provided additional particulars to their published data, especially Drs Ilya

Charapov and Gregory Bryson. The authors also thank Mrs. Lucie Côté for her help in retrieving the identified citations.

**Financial support** Drs Turgeon and Lauzier are recipients of a career research award from the *Fonds de la Recherche en Santé du Québec* (FRSQ). Dr. Moore is a recipient of a post-doc fellowship grant from the *Canadian Institutes for Health Research* (CIHR). Drs Fergusson and McIntyre are recipients of a New Investigator Award from the CIHR.

**Conflict of interest** None declared.

## Appendix

Search strategy for Medline

1. Clinical trial.pt. (462496)
2. Animals/(4297276)
3. Humans/(10548308)
4. 2 not (2 and 3) (3233613)
5. 1 not 4 (457386)
6. Lidocaine/or Anesthetics, Local/or Local anesthetic\*.mp. (36784)
7. lidocaine.mp. (22522)
8. xylocaine.mp. (856)
9. 6 or 7 or 8 (39995)
10. Anesthes\*.mp. [mp = title, original title, abstract, name of substance word, subject heading word] (182287)
11. Anesthesia, Conduction/or Anesthesiology/or Anesthesia, General/(46074)
12. Intraoperative\*.mp. or Intraoperative Care/or Intraoperative Period/(85683)
13. Perioperative Care/or Perioperative\*.mp. (38536)
14. Postoperative\*.mp. or Postoperative Care/or Pain, Postoperative/or Postoperative Period/(465147)
15. Surgical Procedures, Operative/or Operative Procedure\*.mp. (53134)
16. Surgical Procedure\*.mp. (191032)
17. Surger\*.mp. (575864)
18. Surgery/(27904)
19. 10 or 11 or 12 or 13 or 14 or 15 or 16 or 17 or 18 (1131018)
20. 5 and 9 and 19 (4374)
21. local anesthesia.mp. or Anesthesia, Local/(17264)
22. 20 not 21 (3313)
23. Anesthesia, Spinal/or regional anesth\*.mp. (11040)
24. 22 not 23 (2637)
25. Peripheral Nerves/or Nerve Block/or peripheral nerve block.mp. (28815)
26. 24 not 25 (2116)
27. limit 26 to (humans and "all adult (19 plus years)") (1621)

## References

1. White PF, Kehlet H, Neal JM, et al. The role of the anesthesiologist in fast-track surgery: from multimodal analgesia to perioperative medical care. *Anesth Analg* 2007; 104: 1380-96.
2. Roediger L, Larbuisson R, Lamy M. New approaches and old controversies to postoperative pain control following cardiac surgery. *Eur J Anaesthesiol* 2006; 23: 539-50.
3. Liu SS, Wu CL. Effect of postoperative analgesia on major postoperative complications: a systematic update of the evidence. *Anesth Analg* 2007; 104: 689-702.
4. Omote K. Intravenous lidocaine to treat postoperative pain management: novel strategy with a long-established drug. *Anesthesiology* 2007; 106: 5-6.
5. Lauretti GR. Mechanisms of analgesia of intravenous lidocaine. *Revista Bras Anesthesiol* 2008; 58: 280-6.
6. Koppert W, Ostermeier N, Sittl R, Weidner C, Schmelz M. Low-dose lidocaine reduces secondary hyperalgesia by a central mode of action. *Pain* 2000; 85: 217-24.
7. Hollmann MW, Durieux ME. Local anesthetics and the inflammatory response: a new therapeutic indication? *Anesthesiology* 2000; 93: 858-75.
8. Challapalli V, Tremont-Lukats IW, McNicol ED, Lau J, Carr DB. Systemic administration of local anesthetic agents to relieve neuropathic pain. *Cochrane Database Syst Rev* 2005; 4: CD003345.
9. Wasiak J, Cleland H. Lidocaine for pain relief in burn injured patients. *Cochrane Database Syst Rev* 2007; 3: CD005622.
10. Marret E, Rolin M, Beaussier M, Bonnet F. Meta-analysis of intravenous lidocaine and postoperative recovery after abdominal surgery. *Br J Surg* 2008; 95: 1331-8.
11. McCarthy GC, Megalla SA, Habib AS. Impact of intravenous lidocaine infusion on postoperative analgesia and recovery from surgery: a systematic review of randomized controlled trials. *Drugs* 2010; 70: 1149-63.
12. Glanville JM, Lefebvre C, Miles JN, Camosso-Stepinovic J. How to identify randomized controlled trials in MEDLINE: ten years on. *J Med Libr Assoc* 2006; 94: 130-6.
13. Wong SS, Wilczynski NL, Haynes RB. Developing optimal search strategies for detecting clinically sound treatment studies in EMBASE. *J Med Libr Assoc* 2006; 94: 41-7.
14. Wu CT, Borel CO, Lee MS, et al. The interaction effect of perioperative cotreatment with dextromethorphan and intravenous lidocaine on pain relief and recovery of bowel function after laparoscopic cholecystectomy. *Anesth Analg* 2005; 100: 448-53.
15. Gammaitoni AR, Fine P, Alvarez N, McPherson ML, Bergmark S. Clinical application of opioid equianalgesic data. *Clin J Pain* 2003; 19: 286-97.
16. Berry PH, Chapman CR, Covington EC, et al. Pain: current understanding of assessment, management, and treatments. In: Council NP, editor. 2001.
17. Hudcova J, McNicol E, Quah C, Lau J, Carr DB. Patient controlled opioid analgesia versus conventional opioid analgesia for postoperative pain. *Cochrane Database Syst Rev* 2006; 4: CD003348.
18. Van De Walle J, Lauwers P, Adriaensen H. Double blind comparison of fentanyl and sufentanil in anesthesia. *Acta Anaesthesiol Belg* 1976; 27: 129-38.
19. Deshauser D, Moher D, Fergusson D, Moher E, Sampson M, Grimshaw J. Selective serotonin reuptake inhibitors for unipolar depression: a systematic review of classic long-term randomized controlled trials. *CMAJ* 2008; 178: 1293-301.
20. Higgins JP, Altman DG (editors), *On behalf of the Cochrane Statistical Methods Group and the Cochrane Bias Methods Group*. Chapter 8: Assessing risk of bias in included studies. In:

- Higgins JP, Green S editors. Cochrane Handbook for Systematic Reviews of Interventions Version 5.0.1 (updated September 2008). The Cochrane Collaboration, 2008. Available from [www.cochrane-handbook.org](http://www.cochrane-handbook.org). Accessed September 2010.
21. *Jadad AR, Moore RA, Carroll D, et al.* Assessing the quality of reports of randomized clinical trials: is blinding necessary? *Control Clin Trials* 1996; 17: 1-12.
  22. *Higgins JP, Thompson SG, Deeks JJ, Altman DG.* Measuring inconsistency in meta-analyses. *BMJ* 2003; 327: 557-60.
  23. *Striebel HW, Klettke U.* Is intravenous lidocaine infusion suitable for postoperative pain management? *Schmerz* 1992; 6: 245-50 (German).
  24. *Juarez-Pichardo JS, Avila-Lopez A, Serrano-Herrera MA.* Preventive postoperative analgesia with dexmetomidine iv compared to lidocaine iv in cholecystectomy. *Revista Mex Anestesiol* 2009; 32: 81-8.
  25. *Swenson BR, Gottschalk A, Wells LT, et al.* Intravenous lidocaine is as effective as epidural bupivacaine in reducing ileus duration, hospital stay, and pain after open colon resection: a randomized clinical trial. *Reg Anesth Pain Med* 2010; 35: 370-6.
  26. *Insler SR, O'Connor M, Samonte AF, Bazaral MG.* Lidocaine and the inhibition of postoperative pain in coronary artery bypass patients. *J Cardiothorac Vasc Anesth* 1995; 9: 541-6.
  27. *Groudine SB, Fisher HA, Kaufman RP Jr, et al.* Intravenous lidocaine speeds the return of bowel function, decreases postoperative pain, and shortens hospital stay in patients undergoing radical retropubic prostatectomy. *Anesth Analg* 1998; 86: 235-9.
  28. *Knight PR, Kroll DA, Nahrwold ML, et al.* Comparison of cardiovascular responses to anesthesia and operation when intravenous lidocaine or morphine sulfate is used as adjunct to diazepam-nitrous oxide anesthesia for cardiac surgery. *Anesth Analg* 1980; 59: 130-9.
  29. *Kasten GW, Owens E.* Evaluation of lidocaine as an adjunct to fentanyl anesthesia for coronary artery bypass graft surgery. *Anesth Analg* 1986; 65: 511-5.
  30. *Mathew JP, Mackensen GB, Phillips-Bute B, et al.* Randomized, double-blinded, placebo controlled study of neuroprotection with lidocaine in cardiac surgery. *Stroke* 2009; 40: 880-7.
  31. *McKay A, Gottschalk A, Ploppa A, Durieux ME, Groves DS.* Systemic lidocaine decreased the perioperative opioid analgesic requirements but failed to reduce discharge time after ambulatory surgery. *Anesth Analg* 2009; 109: 1805-8.
  32. *Kaba A, Laurent SR, Detroz BJ, et al.* Intravenous lidocaine infusion facilitates acute rehabilitation after laparoscopic colectomy. *Anesthesiology* 2007; 106: 11-8; discussion 5-6.
  33. *Kuo CP, Jao SW, Chen KM, et al.* Comparison of the effects of thoracic epidural analgesia and i.v. infusion with lidocaine on cytokine response, postoperative pain and bowel function in patients undergoing colonic surgery. *Br J Anaesth* 2006; 97: 640-6.
  34. *Koppert W, Weigand M, Neumann F, et al.* Perioperative intravenous lidocaine has preventive effects on postoperative pain and morphine consumption after major abdominal surgery. *Anesth Analg* 2004; 98: 1050-5.
  35. *Herroeder S, Pecher S, Schonherr ME, et al.* Systemic lidocaine shortens length of hospital stay after colorectal surgery: a double-blinded, randomized, placebo-controlled trial. *Ann Surg* 2007; 246: 192-200.
  36. *Mitchell SJ, Pellett O, Gorman DF.* Cerebral protection by lidocaine during cardiac operations. *Ann Thorac Surg* 1999; 67: 1117-24.
  37. *Rimback G, Cassuto J, Tolleson PO.* Treatment of postoperative paralytic ileus by intravenous lidocaine infusion. *Anesth Analg* 1990; 70: 414-9.
  38. *Cassuto J, Wallin G, Hogstrom S, Faxen A, Rimback G.* Inhibition of postoperative pain by continuous low-dose intravenous infusion of lidocaine. *Anesth Analg* 1985; 64: 971-4.
  39. *Wallin G, Cassuto J, Hogstrom S, et al.* Effects of lidocaine infusion on the sympathetic response to abdominal surgery. *Anesth Analg* 1987; 66: 1008-13.
  40. *Cui W, Li Y, Li S, Wang R, Li J.* Systemic administration of lidocaine reduces morphine requirements and postoperative pain of patients undergoing thoracic surgery after propofol-remifentanyl-based anaesthesia. *Eur J Anaesthesiol* 2010; 27: 41-6.
  41. *Wang D, Wu X, Li J, Xiao F, Liu X, Meng M.* The effect of lidocaine on early postoperative cognitive dysfunction after coronary artery bypass surgery. *Anesth Analg* 2002; 95: 1134-41.
  42. *Martin F, Cherif K, Gentili ME, et al.* Lack of impact of intravenous lidocaine on analgesia, functional recovery, and nociceptive pain threshold after total hip arthroplasty. *Anesthesiology* 2008; 109: 118-23.
  43. *Lawwick S, Kim DJ, Mistraretti G, Carli F.* Functional walking capacity as an outcome measure of laparoscopic prostatectomy: the effect of lidocaine infusion. *Br J Anaesth* 2009; 103: 213-9.
  44. *Lawwick S, Kim do J, Michelagnoli G, et al.* Intraoperative infusion of lidocaine reduces postoperative fentanyl requirements in patients undergoing laparoscopic cholecystectomy. *Can J Anesth* 2008; 55: 754-60.
  45. *Bryson GL, Charapov I, Krolczyk G, Taljaard M, Reid D.* Intravenous lidocaine does not reduce length of hospital stay following abdominal hysterectomy. *Can J Anesth* 2010; 57: 759-66.
  46. *El-Tahan MR, Warda OM, Diab DG, Ramzy EA, Matter MK.* A randomized study of the effects of perioperative i.v. lidocaine on hemodynamic and hormonal responses for cesarean section. *J Anesth* 2009; 23: 215-21.
  47. *Saadawy IM, Kaki AM, Abd El Latif AA, Abd-Elmaksoud AM, Tolba OM.* Lidocaine vs. magnesium: effect on analgesia after a laparoscopic cholecystectomy. *Acta Anaesthesiol Scand* 2010; 54: 549-56.
  48. *Yardeni IZ, Beilin B, Mayburd E, Levinson Y, Bessler H.* The effect of perioperative intravenous lidocaine on postoperative pain and immune function. *Anesth Analg* 2009; 109: 1464-9.
  49. *Kim WJ, Sim JY, Choi IC.* Impact of intravenous lidocaine on myocardial injury during off pump coronary artery surgery. *J Cardiothorac Vasc Anesth* 2010; 24: S63-4.
  50. *Rinne T, Kaukinen S.* Does lidocaine protect the heart during coronary revascularisation? *Acta Anaesthesiol Scand* 1998; 42: 936-40.
  51. *Higgins JP, Green S.* In: Green S, Higgins JP, editors. *Cochrane Handbook for Systematic Reviews of Interventions*. Oxford: The Cochrane Collaboration; 2008.