

Erratum

Early Miocene (Burdigalian) Dinoflagellate Cysts from the Kerala Basin, Southwest India: Indicators of Marine Ingression at the Onset of the Mid-Miocene Climate Optimum (MMCO)

Yogesh Pal Singh^{1,2}, Poonam Verma^{1*}, Abha Singh¹ and Rameshwar Bali²

¹Birbal Sahni Institute of Palaeosciences, 53 University Road, Lucknow - 226 007, India

²Centre of Advance study in Geology, University of Lucknow, Lucknow - 226 007, India

*E-mail: verma.poonam07@gmail.com

In the above article published in March 2023 issue of the Journal of the Geological Society of India (v.99, pp.357-369). On page 360, the two plates needs to be swapped as indicated below:

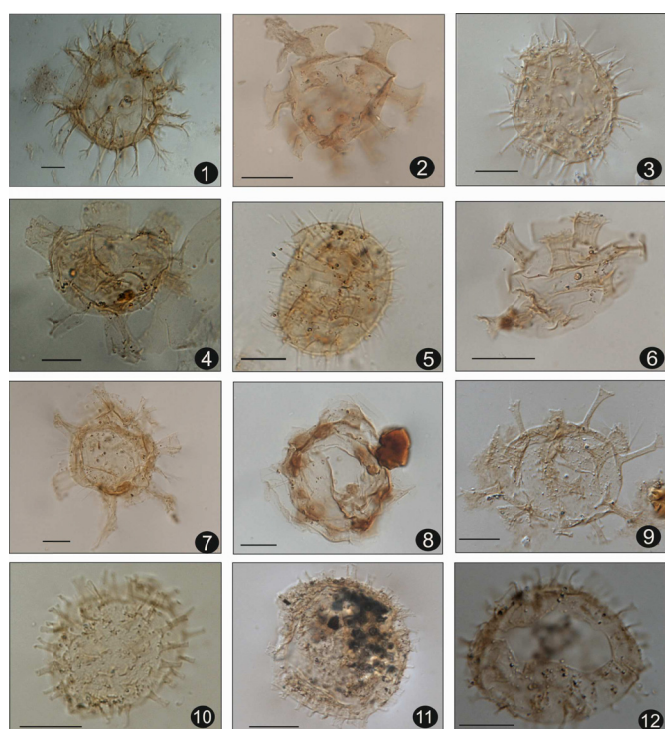


Plate 1. Significant dinocysts recovered from the Channa Kodi section, Quilon Formation, Kerala Basin, India; (The BSIP slide number are indicated together with the England Finder (EF) coordinates for each specimen. Scale bar is 10µm). **1.** *Spiniferites bentorii* (Rossignol) Wall and Dale, 1970; BSIP slide no.16742, EF V 40. **2.** *Cordosphaeridium cantharellus* (Brosius) Gocht, 1969; BSIP slide no.17043, EF P 34/3. **3,5.** *Operculodinium centrocarpum* (Deflandre and Cookson) Wall, 1967; BSIP slide no.17045, EF P 46; 17044, EF M 28/3. **4,7.** *Hystrichokolpoma rigaudiae* Deflandre and Cookson, 1955; BSIP Slide no.17044, EF H 33, slide no.17043, EF C 36/1. **6.** *Homotryblium* sp.; BSIP slide no.17044, EF S 33. **8.** *Tuberculodinium vancampoe* (Rossignol) Wall, 1967; BSIP slide no.17044, EF V 48. **9.** *Homotryblium tenuispinosum* Davey and Williams, 1966; BSIP slide no.17047, EF H 51/2. **10.** *Polysphaeridium zoharyi* (Rossignol) Bujak et al., 1980; BSIP slide no.17045, EF W 26/1. **11,12.** *Operculodinium piaseckii* Strauss and Lund, 1992; BSIP slide no.17044, EF E 37/1, slide no.17048, EF M 27.

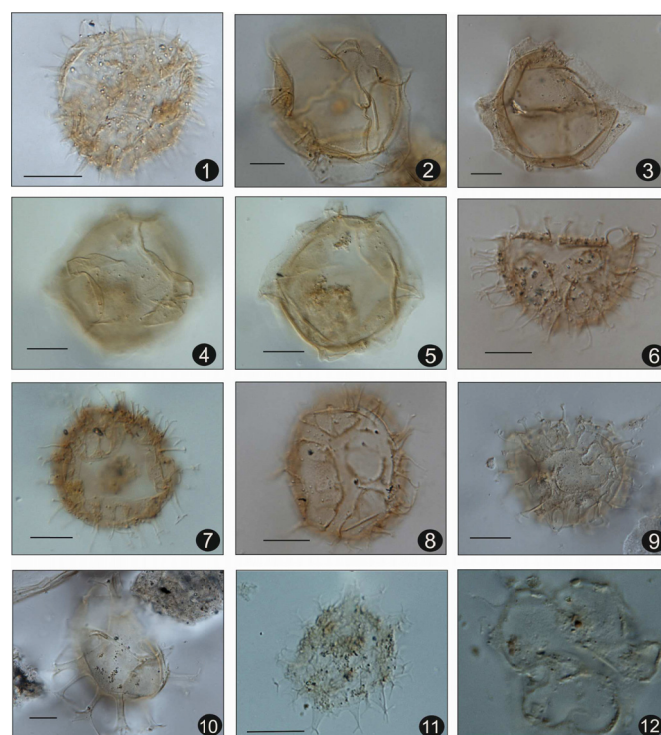


Plate 2. Significant dinocysts recovered from the Channa Kodi section, Quilon Formation, Kerala Basin, India; (The BSIP slide number are indicated together with the England Finder (EF) coordinates for each specimen. Scale bar is 10µm). **1.** *Lingulodinium machaerophorum* (Deflandre and Cookson) Wall et al., 1967; BSIP slide no. 17044, EF H 44. **2.** *Pentadinium* sp. BSIP slide no. 17046 EF T 16/3. **3,4,5.** *Pentadinium laticinctum* Gerlach, 1961; BSIP slide no. 17044 EF G 35/1, slide no. 16743, EF Q 37/2, slide no.17044 EF G 35/1. **6,8,9.** *Cleistosphaeridium placacanthum* (Deflandre and Cookson), Eaton et al., 2001; BSIP slide no.17048, EF S 20/2, slide no. 17048, EF O18; slide no. 16752, EF J 59/1. **7.** *Cleistosphaeridium* sp.; BSIP slide no. 16743, EF K 41/2. **10.** *Spiniferites pseudofurcatus* (Klumpp) Sarjeant, 1981; BSIP slide no. 16753, EF N 35/2. **11.** *Spiniferites mirabilis* (Rossignol) Sarjeant, 1970; BSIP slide no. 16754, EF M 39/3. **12.** Detached opercula of *Cleistosphaeridium placacanthum* (Deflandre and Cookson); Eaton et al., 2001; BSIP slide no. 17048, EF C 26.