



# Individual and combined effects of deoxynivalenol (DON) with other *Fusarium* mycotoxins on rainbow trout (*Oncorhynchus mykiss*) growth performance and health

Paraskevi Koletsi<sup>1,3</sup> · Geert F. Wiegertjes<sup>1</sup> · Elisabeth A. M. Graat<sup>2</sup> · Marijn de Kool<sup>1</sup> · Philip Lyons<sup>3</sup> · Johan W. Schrama<sup>1</sup>

Received: 31 March 2023 / Revised: 23 May 2023 / Accepted: 19 June 2023 / Published online: 20 July 2023

© The Author(s) 2023

## Abstract

This study assessed whether the toxicological effects of deoxynivalenol (DON) produced by *Fusarium graminearum* in rainbow trout (*Oncorhynchus mykiss*) are altered by the co-exposure to a mixture of toxins produced by *Fusarium verticillioides* (FU<sub>mix</sub>). This FU<sub>mix</sub> contained fusaric acid and fumonisin B<sub>1</sub>, B<sub>2</sub> and B<sub>3</sub>. Four diets were formulated according to a 2 × 2 factorial design: CON-CON; CON-FU<sub>mix</sub>; DON-CON; and DON-FU<sub>mix</sub>. Diets with and without DON contained on average 2700 and 0 µg/kg feed, respectively. The sum of the analysed FU<sub>mix</sub> toxins was 12,700 and 100 µg/kg feed in the diets with and without FU<sub>mix</sub>, respectively. The experiment consisted of a 6-week restrictive feeding period immediately followed by a 2-week *ad libitum* feeding period. Growth performance measurements were taken per feeding period. Histopathological measurements in the liver and gastrointestinal tract (pyloric caeca, midgut and hindgut) were assessed at the end of week 1 and week 6 of the restrictive feeding period and at week 8, the last day of the *ad libitum* feeding period. During both restrictive and *ad libitum* feeding, the effects of FU<sub>mix</sub> and DON on growth performance were additive (no interaction effect;  $p > 0.05$ ). During the restrictive feeding period, exposure to DON ( $p \leq 0.001$ ) and FU<sub>mix</sub> ( $p \leq 0.01$ ) inhibited growth and increased feed conversion ratio (FCR). During this period, DON exposure decreased the protein ( $p \leq 0.001$ ) and energy retention ( $p \leq 0.05$ ) in the trout. During the *ad libitum* feeding period, FU<sub>mix</sub> affected HSI ( $p \leq 0.01$ ), while DON exposure reduced feed intake ( $p \leq 0.001$ ) and growth ( $p \leq 0.001$ ) and increased FCR ( $p \leq 0.01$ ). In general, for both liver and intestinal tissue measurements, no interaction effects between DON and FU<sub>mix</sub> were observed. In the liver, histopathological analysis revealed mild alterations, increased necrosis score by DON ( $p \leq 0.01$ ), increased glycogen vacuolization by FU<sub>mix</sub> ( $p \leq 0.05$ ) and decreased percentage of pleomorphic nuclei by FU<sub>mix</sub> ( $p \leq 0.01$ ). DON had a minor impact on the intestinal histological measurements. Over time, some of the liver (glycogen vacuolization score, pleomorphic nuclei;  $p \leq 0.01$ ) and intestinal measurements (mucosal fold and enterocyte width;  $p \leq 0.01$ ) were aggravated in fish fed the FU<sub>mix</sub> contaminated diets, with the most severe alterations being noted at week 8. Overall, the co-exposure to FU<sub>mix</sub> and DON gave rise to additive effects but showed no synergistic or antagonistic effects for the combination of DON with other *Fusarium* mycotoxins.

**Keywords** Mycotoxins · Co-contamination · Fish · Feed · Rainbow trout · Growth

## Introduction

The diversity and inclusion level of vegetable/plant ingredients in aquafeeds have increased over the years (Turchini et al. 2019), even for carnivorous fish-like salmonids (Aas et al. 2022). This is related to multiple factors, including the continuous expansion of the aquaculture sector (Naylor et al. 2021) and thereby the increasing demand for aquafeeds (Tacon 2020), the limited availability of fishmeal and fish oil (Naylor et al. 2009) and the competition for ingredients for farmed animal feeds and biofuel production (Kraan

✉ Paraskevi Koletsi  
office.afi@wur.nl; vivikoletsi@gmail.com

<sup>1</sup> Aquaculture and Fisheries Group, Wageningen University and Research, 6708 WD Wageningen, The Netherlands

<sup>2</sup> Adaptation Physiology Group, Wageningen University and Research, 6708 WD Wageningen, The Netherlands

<sup>3</sup> Alltech Biotechnology Inc, Dunboyne A86 X006, Ireland

2013). Next to other adverse antinutritional effects, the use of grains, seeds and their by-products increases the risk of fish and shrimp being exposed to mycotoxins (Francis et al. 2001; Hardy 2010; Glencross 2016).

Mycotoxin contamination of crops by fungi can occur pre-harvest in the fields and post-harvest during transportation and storage, depending on climatic conditions (temperature and humidity) (Bryden 2012). Ongoing climate change and more extreme weather conditions affect pre-harvest fungal proliferation, which increases the risk of mycotoxin contamination (Paterson and Lima 2010; Perrone et al. 2020; Zingales et al. 2022). Aquafeeds which contain multiple plant-based ingredients can be contaminated with a mixture of different mycotoxins which are produced by one or several fungi (Streit et al. 2012; Smith et al. 2016). Indeed, surveys at the regional and country level have reported multiple mycotoxin contamination in aquafeeds (Europe, (Koletsis et al. 2021); Asia, (Gonçalves et al. 2018a); East Africa, (Marijani et al. 2017); Brazil, (Barbosa et al. 2013); Argentina, (Greco et al. 2015); Serbia, (Rokvić et al. 2020); Kenya, (Mwihia et al. 2020)). For instance, in European aquafeeds, 75% of the samples analysed were contaminated with two or more mycotoxins (Koletsis et al. 2021). In this review study, the most prevalent toxins in aquafeeds were identified as *Fusarium*-produced mycotoxins: fusaric acid (55%), deoxynivalenol (DON) (48%), fumonisin B<sub>1</sub> (FB<sub>1</sub>) (36%) and fumonisin B<sub>2</sub> (FB<sub>2</sub>) (27%). Fumonisin (FB<sub>1</sub>, FB<sub>2</sub> and FB<sub>3</sub>) and fusaric acid are produced (often as a mixture) by *Fusarium verticillioides* and DON by *Fusarium graminearum* (Thrane 2014). *F. verticillioides* and *F. graminearum* grow under similar climate conditions in the field (Thrane 2014). Consequently the occurrence of DON often goes together with the presence of a mixture of *F. verticillioides* toxins.

Compared to terrestrial animals, the toxicological effects of mycotoxins are barely studied in fish (Gonçalves et al. 2020c). The majority of the few fish studies that have been published have often focussed on one single mycotoxin (Anater et al. 2016). Due to its sensitivity, several studies on the toxicological impact of DON have been performed in rainbow trout (*Oncorhynchus mykiss*) (Koletsis et al. 2021; Hooft and Bureau 2021). With the exception of one study on FB<sub>1</sub> (Carlson et al. 2001), no studies on *F. verticillioides* toxins have been completed in trout. FB<sub>1</sub> altered the metabolism of sphingolipids in rainbow trout (Carlson et al. 2001), but no information was presented regarding its effect on growth performance measurements. In other farmed fish species, fumonisins impaired growth (seabream, (Gonçalves et al. 2020a); turbot, (Gonçalves et al. 2020b); African catfish, (Gbore et al. 2010); Nile tilapia, (Tuan et al. 2003); channel catfish, (Lumlertdacha et al. 1995; Yildirim et al. 2000)). Despite its frequent occurrence in European aquafeeds (Koletsis et al. 2021), information on fusaric acid toxicity in farmed fish species is lacking. Finally, information on the

interactions between different types of toxins (co-exposure) in fish is minimal. In zebrafish, it was observed that co-exposure to different combinations of toxins also bring about different toxicological effects. The toxicological effects of FB<sub>1</sub> and aflatoxin B<sub>1</sub> (AFB<sub>1</sub>) were additive (no interaction) (Di Paola et al. 2022). Similarly, zearalenone (ZEN) and FB<sub>1</sub> effects were additives (Yang et al. 2021), whereas the effects of AFB<sub>1</sub> and DON were synergistic, and the effects of DON, ZEN and AFB<sub>1</sub> were antagonistic (Zhou et al. 2017). To our knowledge, only two in vivo feeding experiments were reported on farmed fish species, where synergistic toxicological effects of FB<sub>1</sub> and moniliformin were found in catfish (Yildirim et al. 2000) and AFB<sub>1</sub> and ZEN in rainbow trout (Ghafarifarsani et al. 2021).

Therefore, this experiment aimed to determine whether the toxicological effects of deoxynivalenol (DON) produced by *F. graminearum* are altered by the co-exposure to a mixture of toxins produced by *F. verticillioides* (FU<sub>mix</sub>; fusaric acid and FB<sub>1</sub>, FB<sub>2</sub> and FB<sub>3</sub>) in rainbow trout. This was assessed by measuring growth performance and histopathological measurements in the liver and gastrointestinal tract under restrictive and *ad libitum* exposure.

## Materials and methods

The current study (project number: AVD2330020198084) was approved by the Central Committee on Animal Experiments (CCD) of The Netherlands. All experimental procedures were carried out following the Dutch law on the use of animals for scientific purposes. The feeding trial was performed at the experimental facilities of the Alltech Coppens Aqua Centre (Leende, The Netherlands).

## Experimental design and diets

In the experiment, four diets were studied according to a 2 × 2 factorial design. The first factor was the contamination level of DON produced by *Fusarium graminearum*. The intended contrast in DON exposure levels was 0 and 2000 µg/kg feed on a fresh basis (CON versus DON diets). The second factor was the contamination level of the toxin mixture (FU<sub>mix</sub>; fusaric acid and FB<sub>1</sub>, FB<sub>2</sub> and FB<sub>3</sub>) produced by *Fusarium verticillioides*. The intended contrast in FU<sub>mix</sub> exposure was aimed to have an FB<sub>1</sub> content of 0 versus 8000 µg/kg feed on a fresh basis (CON versus FU<sub>mix</sub> diets). These contrasts in contamination levels were created by exchanging toxin-free ingredients with artificially contaminated ingredients (rice and cracked corn for the DON and FU<sub>mix</sub> exposure, respectively). Consequently, the four experimental diets: CON-CON (DON = 0 µg/kg, FU<sub>mix</sub> = 0 µg/kg), CON-FU<sub>mix</sub> (DON = 0 µg/kg, FU<sub>mix</sub> = 12,000 µg/kg), DON-CON (DON = 2800 µg/kg, FU<sub>mix</sub> = 180 µg/kg) and

DON-FU<sub>mix</sub> (DON = 2500 µg/kg, FU<sub>mix</sub> = 13,500 µg/kg) were nutritionally identical (isoenergetic and isonitrogenous) and only differed in the mycotoxin profile (Table 1). Diets were produced by Research Diet Services (Wijk bij Duurstede, The Netherlands) as 2 mm extruded pellets.

The artificially contaminated ingredients were produced by fermentation with mycotoxin-producing fungi at the Laboratory of Mycotoxins and Mycology, Department of Biological Sciences, College of Agriculture Luiz de Queiroz, University of São Paulo. Rice inoculated with a *F. graminearum* isolate was fermented to produce DON-contaminated rice and cracked corn with a *F. verticillioides* isolate to produce the FU<sub>mix</sub>. Briefly, the Erlenmeyer flasks of 500 mL volume were used each containing 100 g of rice or corn. At least 2 h before the sterilization, 40 mL of distilled water was added to the flask and mixed with rice or corn. The sterilization was performed at 121 °C for 1 h (CS -75, Primalab, Rio de Janeiro, RJ, Brazil). Thereafter, the flasks were left to cool down before inoculation. The sterilized ingredients

were inoculated with 2 mL of conidia suspension with 10<sup>6</sup> conidium/mL of either *Fusarium graminearum* or *Fusarium verticillioides*. The incubation was carried out for 25 days at a constant temperature of 25 °C in static conditions for the DON and FU<sub>mix</sub> production. After incubation, the fermented ingredients containing the respective mycotoxins were oven dried at 50 °C. After drying, the ingredients were ground in a mill with a 0.85-mm sieve. For the control treatments, non-inoculated rice and/or cracked corn of the same batches were used.

The mycotoxin content of the spiked ingredients and experimental diets were analysed with liquid chromatography/tandem mass spectrometry (LC–MS/MS) at the Alltech 37 + mycotoxin laboratory (Dunboyne, Ireland; ISO/IEC 17025:2005 accredited). The analysed DON content in rice was 768 mg/kg on as is basis and the FB<sub>1</sub> content in corn 220 mg/kg on as is basis. Based on these analysed contents and the targeted contrasts in DON (2000 µg/kg) and FB<sub>1</sub> (8000 µg/kg) between diets, the inclusion levels of clean and

**Table 1** Ingredient composition, proximate, and mycotoxin analysis of the experimental diets: without DON or other mycotoxins (CON-CON), without DON but contaminated with a mixture of toxins produced by *Fusarium verticillioides*: fusaric acid and FB<sub>1</sub>, FB<sub>2</sub> and FB<sub>3</sub> (CON-FU<sub>mix</sub>), contaminated with DON alone produced by *Fusarium graminearum* (DON-CON), and co-contaminated with all toxins produced by *F. graminearum* and *F. verticillioides* (DON-FU<sub>mix</sub>)

Ingredients inclusion (%)	Experimental diets			
	CON-CON	CON-FU <sub>mix</sub>	DON-CON	DON-FU <sub>mix</sub>
Wheat	38.42	38.42	38.42	38.42
Soybean meal	25.00	25.00	25.00	25.00
LT fishmeal	12.93	12.93	12.93	12.93
Fish oil	11.98	11.98	11.98	11.98
Blood meal	7.94	7.94	7.94	7.94
Clean cracked corn	1.60	–	1.60	–
Contaminated cracked corn	–	1.60	–	1.60
Clean rice	0.26	0.26	–	–
Contaminated rice	–	–	0.26	0.26
Monocalcium phosphate	0.66	0.66	0.66	0.66
DL-methionine liquid	0.16	0.16	0.16	0.16
Choline chloride liquid	0.18	0.18	0.18	0.18
Premixes <sup>a</sup>	0.88	0.88	0.88	0.88
Analysed nutrient composition (%) <sup>b</sup>				
Dry matter	94.0	94.4	94.5	94.4
Protein	37.6	37.5	37.6	37.7
Fat	15.8	16.0	15.8	15.9
Ash	6.3	6.2	6.1	6.3
Gross energy (MJ/kg)	22.6	22.6	22.3	22.4
Mycotoxin concentration (µg/kg) <sup>b,c</sup>				
Deoxynivalenol (DON)	–	–	2809	2495
Fusaric acid	–	2696	183	3281
Fumonisin B <sub>1</sub> (FB <sub>1</sub> )	–	7599	–	8557
Fumonisin B <sub>2</sub> (FB <sub>2</sub> )	–	1199	–	1163
Fumonisin B <sub>3</sub> (FB <sub>3</sub> )	–	485	–	526

<sup>a</sup>Commercial premix from Alltech Coppens to meet (NRC 2011) requirements of rainbow trout

<sup>b</sup>On dry matter basis, CON-CON diet contained only Enniatin A/A1 0.95 µg/kg

<sup>c</sup>In the main text, the rounded levels are mentioned e.g. DON 2800 and 2500 µg/kg. Rounded FU<sub>mix</sub> totals are, respectively, 12,000, 180 and 13,500 µg/kg

contaminated rice and cracked corn were set at, respectively, 0.26 and 1.60% in the diets (Table 1). In the experimental diets, the targeted levels of DON and FB<sub>1</sub> (in the FU<sub>mix</sub>) were reached; however, the DON-CON diet contained some traces of fusaric acid (Table 1).

## Husbandry

Rainbow trout (*Oncorhynchus mykiss*) with an average initial body weight of approximately 7 g were maintained in a recirculating aquaculture system (RAS) for 8 weeks. The housing conditions were similar to those of a previous *in vivo* experiment (Koletsis et al. 2022). Fish were purchased from a commercial trout farm (Mohnen Aquaculture GmbH, Germany) 1 week prior to the start of the experiment during which they were fed a standard commercial trout diet. Ten tanks were each stocked with 30 fish. Tanks were randomly assigned to one of the experimental diets. The CON-CON and CON-FU<sub>mix</sub> diets were tested in duplicate and the DON-CON and DON-FU<sub>mix</sub> diets in triplicate. Fish were housed at a temperature of  $14 \pm 0.5$  °C. The applied photoperiod was 17 h of light and 7 h of darkness. Water quality was monitored and maintained within the optimal range for trout. In the outlet water of the tanks, the measured pH ranged from 7.0 to 8.5, NH<sub>4</sub><sup>+</sup> was below 1 mg/L, NO<sub>2</sub><sup>-</sup> was below 0.5 mg/L, and oxygen (O<sub>2</sub>) was above 8 mg/L. During the whole experiment, fish were hand-fed twice per day. During the first 6 weeks of the experiment, trout were fed restrictively in order to measure the direct impact of toxins. In this period, the feeding level was based on the metabolic body weight of the fish (12 g/kg<sup>0.8</sup>/d). During the last 2 weeks of the experiment, fish were fed *ad libitum* for 1 h during each meal to determine the potential impact of the tested mycotoxins on feed intake capacity. When uneaten pellets remained on the bottom of the tank or floating on the water's surface for more than 10 min or when the feeding time of one hour was over, the feeding was stopped, and it was assumed that the fish had reached satiation. During both feeding periods, uneaten pellets were removed by siphoning after feeding was stopped and counted to accurately determine feed consumption.

## Sampling

The sampling scheme and the processing of samples were similar to those applied in our previous *in vivo* experiment (Koletsis et al. 2022). Briefly, tank biomass measurements were performed at the start of the experiment, the end of the restrictive feeding period (week 6) and the end of the *ad libitum* feeding period (week 8) to calculate growth performance indicators. At the start of the experiment, 20 fish from the initial population were removed, and at the end of

the restrictive exposure (week 6), five fish per tank were euthanised and stored at  $-20$  °C. These samples were used for body composition measurements to calculate protein and energy retention. Additionally, for histopathological analysis, tissue samples from the liver (two sections per fish) and one section of each gastrointestinal tract segment (pyloric caeca, midgut, and hindgut) were collected from six fish of the initial population and from two fish per tank at week 1 and week 6 of restrictive feeding period and at the end of the *ad libitum* feeding period (week 8). These tissue samples were placed into embedding cassettes, fixed by immersion in 10% neutral buffered formaldehyde for three days at room temperature and afterwards transferred to 70% ethanol until further processing. Before collecting these tissue samples, body weight, liver weight and body length were recorded in these fish.

## Chemical analysis

Fish carcass and feed samples were analysed for dry matter, crude protein and fat, ash content and gross energy by Nutricontrol (Veghel, The Netherlands) as described previously (Koletsis et al. 2022).

## Histological analysis

Liver and intestinal tissue samples were dehydrated in a tissue processor and embedded in paraffin wax according to standard histological procedures. Tissue blocks were cut into 5 µm thick paraffin sections, mounted onto microscope slides and stored until further processing. Thereafter, liver sections were stained with two separate techniques: Haematoxylin and Eosin (H&E) to colour the cell nuclei and structure, and periodic acid-Schiff's (PAS) reagent to distinguish glycogen from lipid vacuolisation. The gastrointestinal tract sections were stained with Alcian blue (pH 2.5) followed by Crossman. All stained slides were pictured with a Leica DM6 microscope (Leica Microsystems, Wetzlar, Germany). Liver pictures ( $n = 10$  per fish) were further evaluated using the semi-quantitative scoring system described by (Koletsis et al. 2022). The gastrointestinal tract pictures were imported in ImageJ software (version 1.53q) (Schindelin et al. 2012). With the ROI manager function of ImageJ, on 10 well-oriented (simple) mucosal fold units per fish ( $n = 10$  per fish) the following indicators were measured as previously described (Koletsis et al. 2022): mucosal fold width, mucosal fold height, lamina propria width, enterocyte width, supranuclear vacuoles width and goblet cell density.

## Calculations and statistics

The following measurements, growth (g/d), specific growth rate (SGR, %/d) and performance; feed conversion ratio (FCR), hepatosomatic index (HSI, %), condition factor (K), retained protein (g/fish), protein retention efficiency (%), retained energy (MJ/fish), energy retention efficiency (%), were calculated separately for each feeding period (6 weeks restrictive and 2 weeks *ad libitum* feeding) according to previously established equations (Koletsis et al. 2022).

A two-way ANOVA was used to analyse the growth performance measurements for the effect of DON supplementation, FU<sub>mix</sub> supplementation and their interaction effect (FU<sub>mix</sub> and DON). Before ANOVA, Levene's test was used to determine whether the variance of the data was homogeneous. The Kolmogorov–Smirnov test was applied to determine whether the distribution of residuals was normal. For non-normally distributed data, a non-parametric test, Kruskal–Wallis, was applied to test the FU<sub>mix</sub> effect and the DON effect, although this model could not test the interaction effect. Histological data ( $n = 600$  per time point) from each segment of the gastrointestinal tract (pyloric caeca, midgut and hindgut) and ordinal measurements in the liver: glycogen and lipid (scores of 1, 2 and 3) and necrosis (scores of 0, 1, 2 and 3) were analysed with a mixed-effect model, multinomial logistic regression using the fish as the random effect. The fixed variables tested were the effects of

FU<sub>mix</sub>, DON, time (week 1, 6 and 8) and their interactions. Liver binomial data (nuclei pyknosis and pleomorphism, necrosis, haemorrhage, inflammation) were expressed as percentages (%) and analysed with a mixed binary logistic regression model including FU<sub>mix</sub>, DON, time and their interactions as fixed effects and the fish as a random effect. Statistical significance was tested at a probability level below 0.05 ( $p \leq 0.05$ ), while  $p$ -values between 0.1 and 0.05 ( $0.1 > p \geq 0.05$ ) were defined as close to statistical significance and reported as tendencies. All data were statistically analysed in the IBM Statistical Package for the Social Sciences (SPSS) program (v 23.0; New York, NY, USA).

## Results

### Growth performance

During the 8-week experiment, no mortality, abnormal behaviour or issues with feed acceptance were noted.

### Restrictive feeding period

During the restrictive feeding period, growth and FCR were affected by both FU<sub>mix</sub> exposure ( $p \leq 0.01$ ) and DON exposure ( $p \leq 0.001$ ) (Table 2). Trout fed the FU<sub>mix</sub> diets had lower growth than those fed the diets without the FU<sub>mix</sub>.

**Table 2** The effects of FU<sub>mix</sub> exposure, DON exposure and their interaction on growth performance measurements of rainbow trout during a 6-week restrictive feeding period

Measurements <sup>b</sup>	Experimental diets <sup>a</sup>				SEM	$p$ -value		
	CON-CON	CON-FU <sub>mix</sub>	DON-CON	DON-FU <sub>mix</sub>		FU <sub>mix</sub>	DON	FU <sub>mix</sub> × DON
Initial BW (g)	7.1	7.5	7.3	7.3	0.16	NS	NS	NS
Final BW (g)	26.4	25.5	24.6	23.4	0.22	**	***	NS
Growth (g/d)	0.48	0.45	0.43	0.40	0.01	**	***	NS
FCR	0.79	0.85	0.89	0.95	0.01	**	***	NS
HSI (%) <sup>c</sup>	2.6	1.6	2.3	1.4	0.43	**	NS	–
Condition factor (K)	1.30	1.28	1.22	1.18	0.03	NS	*	NS
Retained protein (g/fish)	3.1	2.9	2.5	2.4	0.07	NS	***	NS
Protein retention efficiency (%)	52.9	50.6	43.6	41.3	1.33	NS	***	NS
Retained energy (MJ/fish)	0.16	0.16	0.15	0.15	0.004	NS	*	NS
Energy retention efficiency (%)	47.2	45.3	43.7	42.7	1.18	NS	*	NS

The measured levels of DON and FU<sub>mix</sub> (fusaric acid and FB<sub>1</sub>, FB<sub>2</sub> and FB<sub>3</sub>) in the diets are given in Table 1

Values presented are means based on  $n = 2$  for the diets CON-CON and CON-FU<sub>mix</sub> and  $n = 3$  for the diets DON-CON and DON-FU<sub>mix</sub>

FU<sub>mix</sub>, a mixture of toxins produced by *Fusarium verticillioides*: fusaric acid and FB<sub>1</sub>, FB<sub>2</sub> and FB<sub>3</sub>

DON, a toxin produced by *Fusarium graminearum*

\* $p \leq 0.05$ ; \*\* $p \leq 0.01$ ; \*\*\* $p \leq 0.001$

<sup>a</sup>CON-CON, diet without DON and without FU<sub>mix</sub> contamination; CON-FU<sub>mix</sub>, diet without DON and with FU<sub>mix</sub> contamination; DON-CON, diet with DON and without FU<sub>mix</sub> contamination; DON-FU<sub>mix</sub>, diet with DON and with FU<sub>mix</sub> contamination

<sup>b</sup>BW body weight, FCR feed conversion ratio on dry matter basis, HSI hepatosomatic index, SEM standard error of means, NS not significant

<sup>c</sup>Analysed with a non-parametric test (Kruskal–Wallis) for FU<sub>mix</sub> and DON effect, where “–” FU<sub>mix</sub> × DON was not applicable

Growth of trout fed the DON diets was lower than that of trout fed the diets without DON. The decline in growth due to the presence of DON (0.05 g/d) was identical at the diet level with and without the FU<sub>mix</sub> (Table 2), indicating that the effects of DON and FU<sub>mix</sub> were additive (no interaction). FCR was increased when diets were contaminated with the FU<sub>mix</sub> and the increase was even higher when contaminated with DON compared to their controls. During the restrictive feeding period, the HSI was only affected by FU<sub>mix</sub> ( $p \leq 0.01$ ), being lower in trout fed the diets with the FU<sub>mix</sub> compared to trout fed the diets without the FU<sub>mix</sub>. The condition factor was only influenced by DON ( $p \leq 0.05$ ) and was lower in fish fed diets with DON compared to those fed the diets without DON. Finally, DON was also the only factor that affected protein retention ( $p \leq 0.001$ ), protein retention efficiency ( $p \leq 0.001$ ), energy retention ( $p \leq 0.05$ ) and energy retention efficiency ( $p \leq 0.05$ ) (Table 2). Trout fed the DON-contaminated diets retained less protein and less energy compared to trout fed diets without DON. FU<sub>mix</sub> had no impact on metrics of retained protein and energy (Table 2).

### Ad libitum feeding period

During the *ad libitum* feeding period, the feed intake, growth and FCR of rainbow trout were only influenced by the DON treatment ( $p \leq 0.01$ ; Table 3), not by FU<sub>mix</sub> treatment and the interaction. Trout fed the DON-contaminated diets had lower feed intake, lower growth and higher FCR compared to those fed the DON-free diets (Table 3). At the end of the

*ad libitum* feeding period, both DON and FU<sub>mix</sub> treatments did not affect the condition factor. Liver weight (HSI) was reduced in fish fed diets containing the FU<sub>mix</sub> compared to those fed diets without the FU<sub>mix</sub> ( $p \leq 0.01$ ; Table 3).

## Histopathological assessment of liver and gastrointestinal tract

### Liver

The qualitative assessment of the liver histology did not show severe liver damage, but only some minor changes. Some examples of minor changes are given in Fig. 1. where panel (i) shows an unaffected liver; panel (ii) a liver with necrotic areas; panel (iii) a liver with scattered blood cells; and panel (iv) a liver with both necrotic areas and scattered blood cells.

The semi-quantitative assessment (Table 4) showed that for pyknotic nuclei, all scores were 0 in week 8 only for the DON-CON diet. For inflammation, all scores during the restrictive feeding period (weeks 1 and 6) were 0 for all diets. After *ad libitum* feeding (week 8), however, 23 and 27% inflammation spots were found for the FU<sub>mix</sub> contaminated diets, compared to 7% in the DON-CON diets and 0% in the CON-CON diet. Due to the presence of 0 scores in one or multiple combinations of diets and weeks, the effects of DON and FU<sub>mix</sub> could not be estimated for pyknotic nuclei and inflammation (Table 4).

During the restrictive feeding period (weeks 1 and 6), the glycogen vacuolization score was similar for all diets.

**Table 3** The effects of FU<sub>mix</sub> exposure, DON exposure and their interaction on growth performance measurements of rainbow trout during a 2-week *ad libitum* feeding period

Measurements <sup>b</sup>	Experimental diets <sup>a</sup>				SEM	p-value		
	CON-CON	CON-FU <sub>mix</sub>	DON-CON	DON-FU <sub>mix</sub>		FU <sub>mix</sub>	DON	FU <sub>mix</sub> × DON
Final BW (g)	52.1	51.2	41.2	39.9	1.12	NS	***	NS
Growth (g/d)	1.71	1.70	1.11	1.10	0.07	NS	***	NS
Feed intake (g/fish/d)	1.57	1.60	1.22	1.25	0.04	NS	***	NS
FCR	0.86	0.89	1.04	1.08	0.04	NS	**	NS
HSI (%)	2.1	1.4	2.2	1.9	0.18	**	NS	NS
Condition factor (K)	1.3	1.3	1.3	1.2	0.04	NS	NS	NS

The measured levels of DON and FU<sub>mix</sub> (fusaric acid and FB<sub>1</sub>, FB<sub>2</sub> and FB<sub>3</sub>) in the diets are given in Table 1

Values presented are means based on  $n=2$  for the diets CON-CON and CON-FU<sub>mix</sub> and  $n=3$  for the diets DON-CON and DON-FU<sub>mix</sub>

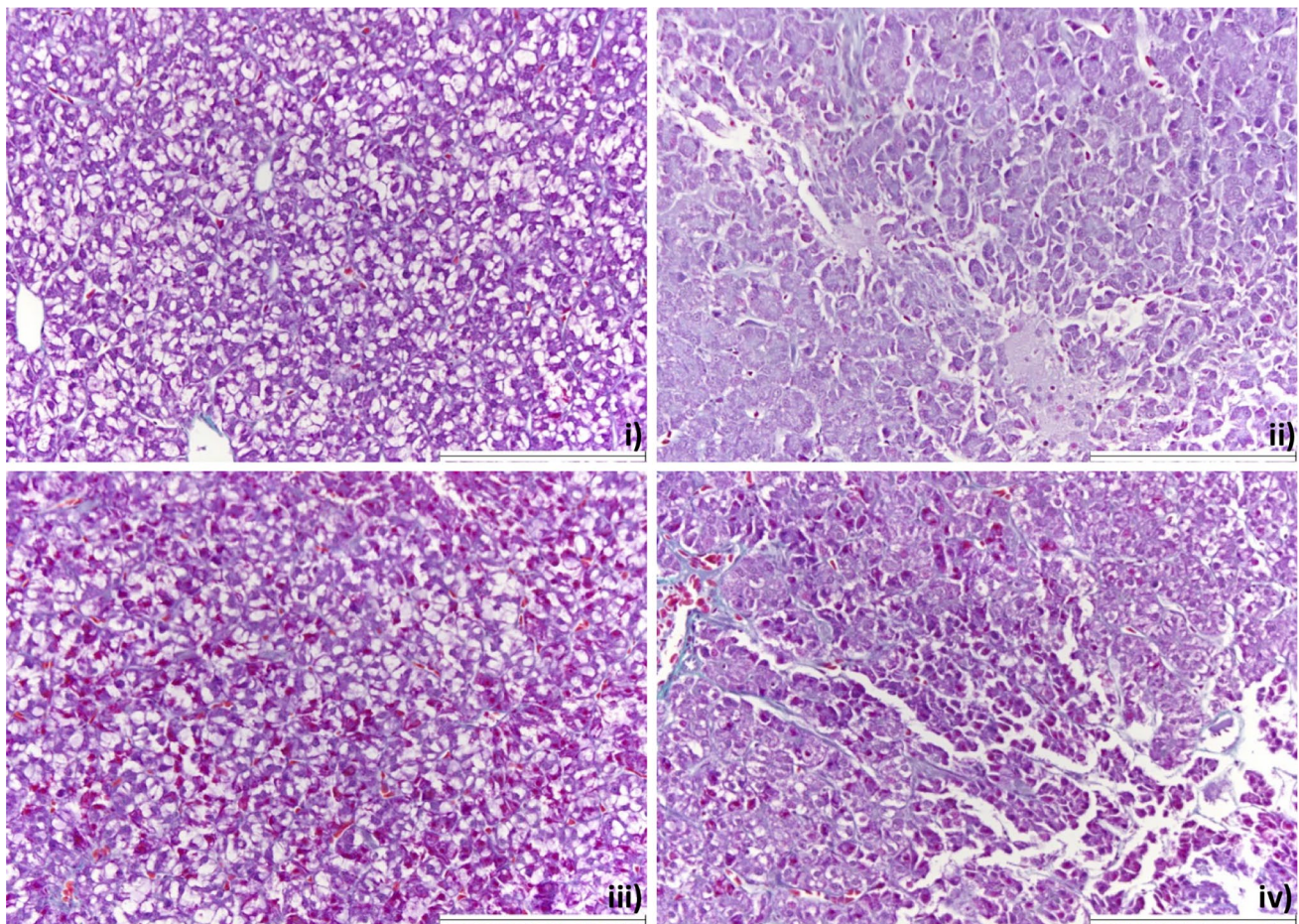
FU<sub>mix</sub>, a mixture of toxins produced by *Fusarium verticillioides*: fusaric acid and FB<sub>1</sub>, FB<sub>2</sub> and FB<sub>3</sub>

DON, a toxin produced by *Fusarium graminearum*

\* $p \leq 0.05$ ; \*\* $p \leq 0.01$ ; \*\*\* $p \leq 0.001$

<sup>a</sup>CON-CON, diet without DON and without FU<sub>mix</sub> contamination; CON-FU<sub>mix</sub>, diet without DON and with FU<sub>mix</sub> contamination; DON-CON, diet with DON and without FU<sub>mix</sub> contamination; DON-FU<sub>mix</sub>, diet with DON and with FU<sub>mix</sub> contamination

<sup>b</sup>BW body weight, FCR feed conversion ratio on dry matter basis, HSI hepatosomatic index, SEM standard error of means, NS not significant



**Fig. 1** Examples of histological sections of the liver at the end of the experiment (week 8) from rainbow trout fed: (i) CON-CON diet (DON=0, FU<sub>mix</sub>=0), (ii) CON-FU<sub>mix</sub> diet (DON=0,

FU<sub>mix</sub>=12,000), (iii) DON-CON diet (DON=2800, FU<sub>mix</sub>=180) and (iv) DON-FU<sub>mix</sub> diet (DON=2500, FU<sub>mix</sub>=13,500). Staining: PAS-crossman; magnification: ×20; white scale bar = 200 μm

At the end of the *ad libitum* feeding period (week 8), however, the glycogen vacuolization score increased only in the trout fed the diets containing the FU<sub>mix</sub> (interaction  $p \leq 0.001$ ). The effect of DON on glycogen vacuolization was not present (Table 4). Lipid vacuolization did not change over time and was unaffected by both dietary treatments. Regarding the percentage of pleomorphic nuclei, the 3-way interaction effect was present ( $p \leq 0.01$ ), but there were no clear patterns of the effects of DON and FU<sub>mix</sub> over time (Table 4). In livers of DON-fed trout, the risk on the higher order necrosis scores was increased compared to livers of trout not exposed to DON. Necrosis was also present in trout fed the CON-CON and CON-FU<sub>mix</sub> diet, although with a low average score (ranging from 0.1 to 0.3) and a lower percentage of liver parts affect. Time also affected the liver necrosis score ( $p \leq 0.01$ ), being the highest at week 6 (Table 4). The percentage of haemorrhage was not significantly affected by the dietary treatments and time ( $p > 0.05$ ; Table 4).

### Gastrointestinal tract

The statistical outcome of the semi-quantitative histological assessment in the gastrointestinal tract of rainbow trout response to FU<sub>mix</sub>, DON, time and their interactions (3-way and 2-way) is presented in Table 5, showing mild histopathological changes indicated by a few 2-way significant interactions. Figure 2 displays examples of the intestinal folds from the pyloric caeca, midgut and hindgut, collected at the end of the experiment (week 8). Similarly in the qualitative analyses (Fig. 2), no notable histological alterations were observed in the gastrointestinal tract.

The semi-quantitative assessment of the intestinal histology showed that none of the indicators was affected by the 3-way interaction effect between DON, FU<sub>mix</sub> and time (Table 5). The enterocyte width in the midgut was the only intestinal indicator that was affected by the interaction between DON and time ( $p \leq 0.05$ ), which was related to an alteration in the effect of DON between week 1 and week

**Table 4** Histological assessment in trout livers with the effects of DON, FU<sub>mix</sub>, time and their interactions after feeding the experimental diets restrictively for 6 days (week 1) and 40 days (week 6) and *ad libitum* for 15 days (week 8)

Week	Experimental diets				p-value					
	CON-CON	CON-FU <sub>mix</sub>	DON-CON	DON-FU <sub>mix</sub>	FU <sub>mix</sub>	DON	time	FU <sub>mix</sub> *time	DON*time	FU <sub>mix</sub> *DON*time
<b>Vacuolization score</b>										
Glycogen <sup>a</sup>	1	2.0	1.8	1.7	1.6					
	6	1.8	1.5	1.7	1.9	*	NS	****	NS	NS
	8	1.9	2.7	2.0	2.5					
Lipid <sup>a</sup>	1	2.0	2.0	1.9	2.0					
	6	2.2	2.0	2.1	1.8	NS	NS	NS	NS	NS
	8	1.7	1.3	1.9	1.8					
<b>Nuclei characteristics</b>										
Pyknotic (%)	1	15	23	5	10					
	6	18	20	20	3	– <sup>b</sup>	–	–	–	–
	8	25	25	0	20					
Pleomorphic (%)	1	3	43	13	25					
	6	48	28	47	3	**	NS	****	NS	**
	8	72	3	62	63					
<b>Pathological indicators</b>										
Necrosis (%)	1	13	8	23	15					
	6	18	20	30	45	NS	**	****	NS	NS
	8	25	15	20	27					
Necrosis score <sup>a</sup>	1	0.2	0.1	0.3	0.2					
	6	0.3	0.3	0.5	0.9	NS	**	*	NS	NS
	8	0.3	0.2	0.3	0.5					
Haemorrhage (%)	1	30	15	52	45					
	6	18	35	32	23	NS	NS	NS	NS	NS
	8	15	13	13	23					
Inflammation (%)	1	0	0	0	0					
	6	0	0	0	0	– <sup>b</sup>	–	–	–	–
	8	0	23	7	27					

Total number of observations was  $n = 600$ , apart from glycogen and lipid vacuolisation  $n = 585$ 

NS not significant

\* $p \leq 0.05$ ; \*\* $p \leq 0.01$ ; \*\*\* $p \leq 0.001$ ; \*\*\*\* $p \leq 0.1$ <sup>a</sup>Glycogen, lipid vacuolisation and necrosis scores were analysed with a generalised linear mixed model by using multinomial logistic regression and the other pathological indicators by using binary logistic regression in which frequencies were used. In the table, however, descriptive means are shown<sup>b</sup>For pyknotic nuclei and inflammation, it was not possible to estimate model coefficients, since one or more diet-week combinations show 0% affected spots



**Table 5** Effects of DON, FU<sub>mix</sub> time and their interactions on histological measurements in pyloric caeca, midgut and hindgut of rainbow trout after feeding the experimental diets restrictively for 6 days (week 1) and 40 days (week 6) and *ad libitum* for 15 days (week 8)

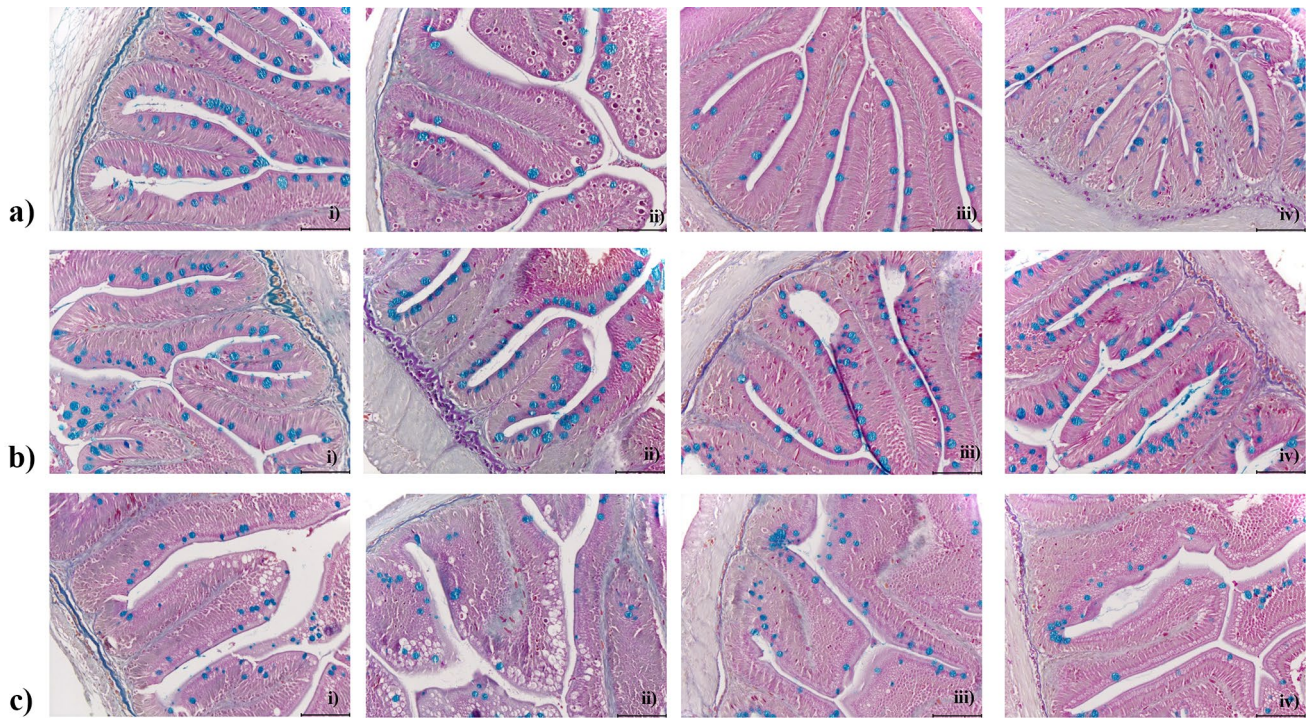
Week	Experimental diets				p-value						
	CON-CON	CON-FU <sub>mix</sub>	DON-CON	DON-FU <sub>mix</sub>	SEMI	FU <sub>mix</sub>	DON time	FU <sub>mix</sub> × DON	FU <sub>mix</sub> × time	DON × time	FU <sub>mix</sub> × DON × time
<b>Mucosal fold width (µm)</b>											
Pyloric	1	129	127	138	128						
	6	126	141	124	130	8.7	NS	**	NS	NS	NS
	8	169	145	136	149						
Midgut	1	122	131	132	134						
	6	134	150	128	131	6.2	NS	****	NS	**	NS
	8	145	130	150	131						
Hindgut	1	130	139	118	129						
	6	184	132	132	120	14.5	****	****	NS	****	NS
	8	156	122	144	133						
<b>Mucosal fold height (µm)</b>											
Pyloric	1	301	317	311	304						
	6	403	399	378	372	28.7	NS	NS	***	NS	NS
	8	490	425	414	452						
Midgut	1	306	379	350	329						
	6	343	371	377	314	28.1	NS	NS	****	NS	NS
	8	458	425	410	374						
Hindgut	1	380	433	397	404						
	6	459	390	323	303	52.3	NS	NS	NS	****	NS
	8	432	394	474	486						
<b>Lamina propria width (µm)</b>											
Pyloric	1	12	12	14	12						
	6	16	17	14	14	2	NS	NS	NS	NS	NS
	8	18	12	13	15						
Midgut	1	15	14	15	15						
	6	18	19	19	18	1.6	NS	NS	**	NS	NS
	8	14	15	17	16						
Hindgut	1	12	13	10	11						
	6	16	16	14	14	1.6	NS	NS	*	NS	NS
	8	13	12	14	13						
<b>Enterocyte width (µm)</b>											
Pyloric	1	66	64	72	66						

Table 5 (continued)

Week	Experimental diets		p-value									
	CON-CON	CON-FU <sub>mix</sub>	DON-CON	DON-FU <sub>mix</sub>	SEMI	FU <sub>mix</sub>	DON	time	FU <sub>mix</sub> × DON	FU <sub>mix</sub> × time	DON × time	FU <sub>mix</sub> × DON × time
Midgut	65	76	67	74	4.7	NS	NS	***	NS	****	NS	NS
	87	80	77	79								
	56	65	66	68								
	72	82	60	69	5	NS	NS	***	NS	***	*	NS
	84	69	87	71								
Hindgut	51	65	52	71								
	80	69	61	67	7.5	NS	NS	****	NS	**	NS	NS
	80	60	76	66								
<b>Supranuclear vacuole width (µm)</b>												
Pyloric	50	51	51	49								
	44	46	42	41	4.5	NS	NS	*	NS	NS	NS	NS
	58	52	44	52								
Midgut	49	52	44	50								
	44	48	42	43	3.7	NS	NS	NS	NS	NS	NS	NS
	47	47	46	44								
Hindgut	67	59	54	46								
	86	45	57	40	8.1	**	*	NS	NS	NS	NS	NS
	63	50	54	54								
<b>Goblet cell density (per µm fold height)</b>												
Pyloric	0.05	0.04	0.03	0.02								
	0.07	0.05	0.04	0.04	0.012	*	*	****	**	NS	NS	NS
	0.08	0.02	0.03	0.04								
Midgut	0.08	0.07	0.07	0.07								
	0.09	0.11	0.12	0.12	0.01	NS	****	***	NS	NS	NS	NS
	0.07	0.07	0.09	0.08								
Hindgut	0.04	0.06	0.05	0.05								
	0.05	0.04	0.04	0.04	0.009	NS	NS	NS	NS	NS	NS	NS
	0.04	0.04	0.04	0.04								

NS not significant

\* $p \leq 0.05$ ; \*\* $p \leq 0.01$ ; \*\*\* $p \leq 0.001$ ; \*\*\*\* $p \leq 0.1$ <sup>a</sup>Pooled standard error of means: SEM (pyloric:  $n = 544$ , midgut:  $n = 481$ , hindgut:  $n = 285$ )



**Fig. 2** Representative examples of histological sections of the intestinal folds at the end of the experiment (week 8) in a pyloric caeca, b midgut, and c hindgut of rainbow trout fed: (i) CON-CON diet (DON=0,  $FU_{mix}$ =0), (ii) CON- $FU_{mix}$  diet (DON=0,

$FU_{mix}$ =12,000), (iii) DON-CON diet (DON=2800,  $FU_{mix}$ =180), and (iv) DON- $FU_{mix}$  diet (DON=2500,  $FU_{mix}$ =13,500). Staining: Alcian blue-crossman; magnification:  $\times 20$ ; black scale bar = 100  $\mu m$

6 of the restrictive feeding period (Table 5). Mucosal fold width in the midgut and enterocyte width in the midgut and hindgut were affected by the 2-way interaction between time and  $FU_{mix}$  ( $p \leq 0.01$ ). These indicators were higher during week 1 and week 6 in fish fed diets containing  $FU_{mix}$ , while during week 8 (the end of the *ad libitum* feeding period), these width measurements were reduced in fish fed diets containing  $FU_{mix}$  (Table 5). The goblet cell density of the pyloric caeca was the only indicator with an interaction effect between DON and  $FU_{mix}$  ( $p \leq 0.01$ ). Fish fed diets containing toxins had a similar goblet cell density in the caeca, but these densities were lower compared to the fish fed the toxin-free diet (CON-CON; Table 5). No interaction effect between DON and  $FU_{mix}$  was noted in any of the other intestinal indicators measured. The supranuclear vacuole width in the hindgut was affected by both DON ( $p \leq 0.05$ ) and  $FU_{mix}$  ( $p \leq 0.01$ ), without an interaction. Trout exposed to DON and  $FU_{mix}$  had a reduced supranuclear vacuole width (Table 5).

## Discussion

The current study investigated, via a  $2 \times 2$  factorial design, the impact of individual and combined effects of *Fusarium graminearum*- and *Fusarium verticillioides*-produced toxins

on growth performance and histology of the gastrointestinal tract of rainbow trout. The first factor was DON contamination produced by *F. graminearum* (DON), and the second factor was the mixture of the toxins: fusaric acid and  $FB_1$ ,  $FB_2$  and  $FB_3$  ( $FU_{mix}$ ) produced by *F. verticillioides*. Therefore, the four experimental diets had a contrast without and with DON contamination (CON versus DON) and without and with  $FU_{mix}$  contamination (CON versus  $FU_{mix}$ ).

The restrictive feeding period revealed a direct impact of DON at a dose of 2700  $\mu g/kg$  on growth, FCR, protein and energy retention. At half DON dose, an earlier study (Koletsis et al. 2022) measured the direct impacts of DON on protein and energy retention. These observations were not influenced by a reduction in feed intake since the restrictive feeding regime aimed to offer the same amount of feed in all treatments. Therefore, any change in the growth performance indicators was associated with the mode of action of DON (e.g., inhibition of protein synthesis). During the *ad libitum* feeding period, the accurate monitoring of feed consumption by subtracting the uneaten pellets showed that DON exposure reduced feed intake in trout. This is in contrast to a previous *in vivo* study in trout with the same experimental design (Koletsis et al. 2022), where no effect of DON on feed intake was present. This difference might be explained by exposure to DON at a dose of 2700  $\mu g/kg$ , which was higher than that in the previous study (Koletsis

et al. 2022). The current DON dose resulted in an estimated daily intake (EDI) of 0.104  $\mu\text{g}$  DON/g BW/day during the *ad libitum* feeding period, whereas in our earlier study, the EDI of DON was only 0.044  $\mu\text{g}$ /g BW/day (Koletsis et al. 2022). Most likely, the differences in DON exposure level may explain the differences between studies regarding appetite. The current observation of a reduced feed intake is in line with studies in trout applying an *ad libitum* feeding period of 8 weeks (Hooft et al. 2011, 2019a, b; Ryerse et al. 2016; Hooft and Bureau 2017; Gonçalves et al. 2018b). The combination of the dose of DON and experimental duration should, therefore, be considered when investigating statistical differences in feed intake.

Considering the higher dose of DON (2700  $\mu\text{g}/\text{kg}$ ) applied in the current study, it was expected that alterations in the liver histological measurements would be more severe compared to the ones reported in an earlier study (Koletsis et al. 2022) even at half DON dose. Other DON studies did not detect histopathological changes in the liver of trout (Matejova et al. 2014) (Hooft et al. 2019a) and of red tilapia (Tola et al. 2015). In contrast, histopathological changes were observed qualitatively in trout (Hooft et al. 2011; Gonçalves et al. 2019) and quantitatively in carp (Pietsch et al. 2014; Pietsch and Burkhardt-Holm 2015). The minor changes in the current study and variability between studies in DON impact on the liver might be linked to factors such as differences in the power of the study (in the current study, 4 or 6 fish were sampled for histology per treatment at each time point); variability inside the tank between fish in EDI of DON due to differences in feed intake; the occurrence of unknown co-exposure with other mycotoxins (over the years, the detection methods of mycotoxins have evolved; new toxins are discovered and analysed); differences in experimental conditions and genetic background and life history of the experimental fish. The minor/mild histological changes induced by DON on gut histology are in line with an earlier study (Koletsis et al. 2022). The absence/minor effect of DON on trout intestinal tissues may be related to the rapid absorption of the toxin in the upper part of the gastrointestinal tract and distribution to the liver within 1 h (Bernhoft et al. 2017). While the gastrointestinal tract was consistently unaffected by DON in our studies, other studies (Koletsis et al. 2022) reported alterations of histological measurements in the liver, where DON is eliminated at the half-life within 6.2 h (Bernhoft et al. 2017).

Regarding the second factor in this study,  $\text{FU}_{\text{mix}}$ , it is not possible to estimate the contribution of each separate toxin present in the mixture produced by *F. verticillioides* (fusaric acid and  $\text{FB}_1$ ,  $\text{FB}_2$  and  $\text{FB}_3$ ) to the total effect of the mixture. Information on fusaric acid and  $\text{FB}_3$  effects on fish is absent. In the EU recommendation for toxins,  $\text{FB}_1$  and  $\text{FB}_2$  are summed with a current limit of 10,000  $\mu\text{g}/\text{kg}$  (Commission 2006). In the  $\text{FU}_{\text{mix}}$  contaminated diets in the current

study, the mean  $\text{FB}_1$  and  $\text{FB}_2$  level was  $\sim 9000$   $\mu\text{g}/\text{kg}$  feed, which is below the current EU recommended limit. Compared to the other toxins produced by *F. verticillioides*,  $\text{FB}_1$  is the main toxin produced by this fungi, occurring more frequently and most toxic and, therefore, also most frequently studied (Galeana-Sánchez et al. 2017).

This study is the first to evaluate the sensitivity of rainbow trout to fumonisins. Trout exposed to the  $\text{FU}_{\text{mix}}$  (with a sum of  $\text{FB}_1$  and  $\text{FB}_2$  being 9000  $\mu\text{g}/\text{kg}$ ) showed a significant reduction in the growth, but only during restrictive feeding and not during *ad libitum* feeding. The sensitivity of fish to fumonisins seems to differ strongly between fish species. In studies with a longer *ad libitum* period than the current study, lower fumonisins levels resulted in reduced growth in sea-bream ( $\text{FB}_1$  and  $\text{FB}_2 \geq 168$   $\mu\text{g}/\text{kg}$ ; (Gonçalves et al. 2020a)) and in turbot ( $\text{FB}_1$  and  $\text{FB}_2 \geq 1000$   $\mu\text{g}/\text{kg}$ ; (Gonçalves et al. 2020b)). In other fish species, fumonisins effects on growth were only observed at higher levels ( $\text{FB}_1 \geq 5000$   $\mu\text{g}/\text{kg}$  in African catfish; (Gbore et al. 2010)) ( $\text{FB}_1 \geq 40,000$   $\mu\text{g}/\text{kg}$  in Nile tilapia; (Tuan et al. 2003)) ( $\text{FB}_1 \geq 20,000$   $\mu\text{g}/\text{kg}$  in channel catfish; (Lumlertdacha et al. 1995); (Yildirim et al. 2000)). The disappearance of the  $\text{FU}_{\text{mix}}$  on growth during the *ad libitum* period might suggest that trout adapted to  $\text{FU}_{\text{mix}}$  exposure. In other words, the fish may have become less sensitive to the toxic effects of this mixture. However, liver and intestinal histopathological observations do not support this hypothesis of adapting to these toxins. Instead, various histopathological measurements (e.g., increased glycogen vacuolization in the liver and reduced mucosal fold and enterocyte width in the gastrointestinal tract) revealed that  $\text{FU}_{\text{mix}}$  effects aggravated with time, being more severe at the end of the *ad libitum* feeding period. The time (or feeding level) related change in  $\text{FU}_{\text{mix}}$  effects together with the large variability between fish species in sensitivity to *F. verticillioides* toxins warrants further research on this group of toxins to improve the current recommended EU limits. The approach taken in the current study to use a mixture of *F. verticillioides* produced toxins can be advised as approach also for other fish species because feed ingredients with an infestation of *F. verticillioides* are most likely to contain a mixture of fusaric acid and  $\text{FB}_1$ ,  $\text{FB}_2$  and  $\text{FB}_3$ .

The main objective of this study was to investigate the presence of interaction effects (antagonism, synergism or additivity) of  $\text{FU}_{\text{mix}}$  and DON. For growth performance data during both feeding periods (restrictive and *ad libitum*), no significant interaction effects were present (Tables 2 and 3), which suggests that the effects of  $\text{FU}_{\text{mix}}$  and DON are additive during co-exposure. Apart from the goblet cell density of the pyloric caeca, all studied histological measurements suggested additivity of  $\text{FU}_{\text{mix}}$  and DON effect. It can be hypothesised that the combination of *Fusarium* spp. toxins, as applied in the current study ( $\text{FU}_{\text{mix}}$  versus DON), does not influence each other's toxicological effects. It has

been suggested that combining mycotoxins with structural similarities, comparable modes of action and thus toxicity profiles, increases the likelihood that their effects are additive (Speijers and Speijers 2004). The absence of a significant interaction effect might also be related to low statistical power of this study (a too low number of tanks/animals being included into the study). A major toxicological impact  $FB_1$ , the most abundant toxin produced by *F. verticillioides*, is an interference with the sphingolipids' metabolism via inhibition of ceramide synthase enzymes (Feijó Corrêa et al. 2018), which results in an alteration of the sphinganine/sphingosine ratio in livers. Therefore, this ratio is used as a biomarker of  $FB_1$  exposure (Riley et al. 1994). It can also be the case that the proper measurements for quantifying  $FU_{mix}$  effects were not assessed in the present study in order to reveal interaction effects (e.g., the sphinganine/sphingosine ratio in the liver).

Only few studies in fish addressed co-exposure; thus, the comparison between effects of co-exposure to  $FU_{mix}$  and DON is only possible with terrestrial animal literature. Feeds and also ingredients are often co-contaminated with multiple toxins (Streit et al. 2012). Next to the limited information on the effects of co-occurrence, also in terrestrial animals, there is a large variability in responses between studies, species and the measured indicators (Smith et al. 2016). In pigs, an early study (Smith et al. 1997) found synergism between DON and fusaric acid on growth performance. In contrast, a later study in pigs (Grenier et al. 2011) did not show a interaction effect between DON and fumonisins on growth, but a synergistic action was observed regarding the severity of histopathological lesions in the liver. In ducks, synergism between fumonisins, DON and ZEN resulted a lower growth, but this was not observed in any of the other factors assessed (Peillod et al. 2021). In another pig study (Bracarense et al. 2012), synergism, antagonism and additivity were observed for the co-exposure to DON and fumonisins depending on the assessed measurement. Due to the large variability between and within studies, further in vitro and in vivo research is required to understand and explain the combined mycotoxin effects and to predict their interactions. Such information is needed for regulatory authorities of the animal feed industry in formulating recommended limits for mycotoxin mixtures.

This first rainbow trout study evaluating the combined effects of the most prevalent mycotoxins in aquafeeds produced by *F. graminearum*: DON and *F. verticillioides*:  $FU_{mix}$  (fusaric acid and  $FB_1$ ,  $FB_2$  and  $FB_3$ ) showed that the co-exposure of  $FU_{mix}$  and DON primarily had additive effects on growth performance (no interaction effects). The exposure to  $FU_{mix}$  and to DON impaired growth and FCR during the restrictive feeding period. During *ad libitum* feeding, growth and feed intake were reduced by DON exposure, but not by  $FU_{mix}$ . There were no toxins interaction effects

on histopathological measurements in the liver and gastrointestinal tract. DON exposure in the current study resulted in minor histological changes, and  $FU_{mix}$  did lead to minor alteration in liver and intestinal tissue but mainly at the end of the *ad libitum* feeding period.

In conclusion, despite the minor impact on the liver, the current study clearly shows a substantial effect on growth performance already at a DON exposure of level of 2700  $\mu\text{g}/\text{kg}$  feed. This implies that the current EU recommended limit for DON at 5000  $\mu\text{g}/\text{kg}$  may need to be reconsidered for fish. Since no other studies in trout have evaluated the effects of the sum of  $FB_1$  and  $FB_2$ , a conclusion cannot be drawn about the effectiveness of the EU recommended limit at 10,000  $\mu\text{g}/\text{kg}$ , although it is suggested future studies to measure the effects of  $FU_{mix}$  instead of the sum of  $FB_1$  and  $FB_2$ .

**Acknowledgements** The authors would like to thank the staff of the research facilities at Alltech Coppens Aqua Centre for their support in running the experiment, especially Jan van Loon and Jan van Mechelen. Furthermore, we would like to acknowledge Aquaculture and Fisheries lab and Ronald Booms for assisting with processing histological samples. Finally, we thank Eduardo Micotti da Gloria from Laboratory of Mycotoxins and Mycology (University of São Paulo, Brazil) for providing the contaminated ingredients used in the experimental diets.

**Author contributions** Conceptualization: P.K., J.S., G.F.W., P.L.; methodology: P.K., M.K., J.S., E.A.M.G.; software: P.K., M.K., E.A.M.G.; validation: P.K., J.S., E.A.M.G.; formal analysis: P.K., E.A.M.G.; investigation: P.K., J.S.; resources: G.F.W. and P.L.; data curation: P.K., J.S.; writing—original draft preparation: P.K.; writing—review and editing: P.K., J.S., E.A.M.G., G.F.W., P.L., M.K.; visualisation: P.K.; supervision: J.S., G.F.W. and P.L.; project administration: P.K., G.F.W. and P.L.; funding acquisition: G.F.W. and P.L. All authors have read and agreed to the published version of the manuscript.

**Funding** The study was funded by Alltech Inc., Dunboyne, Ireland.

**Data availability** The corresponding author can be contacted if access to the data is desired.

## Declarations

**Ethical approval** The study was conducted according to the guidelines of the Dutch legislation (Act on Animal Experiments) and approved by the Central Committee on Animal Experiments (CCD), under the advice of the Animal Experiment Committee (DEC) of The Netherlands (protocol code: AVD2330020198084 and date of approval: July 26, 2019).

**Conflict of interest** The authors declare no competing interests.

**Open Access** This article is licensed under a Creative Commons Attribution 4.0 International License, which permits use, sharing, adaptation, distribution and reproduction in any medium or format, as long as you give appropriate credit to the original author(s) and the source, provide a link to the Creative Commons licence, and indicate if changes were made. The images or other third party material in this article are included in the article's Creative Commons licence, unless indicated otherwise in a credit line to the material. If material is not included in the article's Creative Commons licence and your intended use is not permitted by statutory regulation or exceeds the permitted use, you will

need to obtain permission directly from the copyright holder. To view a copy of this licence, visit <http://creativecommons.org/licenses/by/4.0/>.

## References

- Aas TS, Åsgård T, Ytrestøyl T (2022) Utilization of feed resources in the production of Atlantic salmon (*Salmo salar*) in Norway: An update for 2020. *Aquacul Rep* 26:101316. <https://doi.org/10.1016/j.aqrep.2022.101316>
- Anater A, Manyes L, Meca G, Ferrer E, Luciano FB, Pimpão CT, Font G (2016) Mycotoxins and their consequences in aquaculture: a review. *Aquaculture* 451:1–10. <https://doi.org/10.1016/j.aquaculture.2015.08.022>
- Barbosa TS, Pereyra CM, Soleiro CA, Dias EO, Oliveira AA, Keller KM, Silva PPO, Cavaglieri LR, Rosa CAR (2013) Mycobiota and mycotoxins present in finished fish feeds from farms in the Rio de Janeiro State. *Brazil Int Aquat Res* 5(1):3. <https://doi.org/10.1186/2008-6970-5-3>
- Bernhoft A, Hogasen HR, Rosenlund G, Ivanova L, Berntssen MHG, Alexander J, Eriksen GS, Faeste CK (2017) Tissue distribution and elimination of deoxynivalenol and ochratoxin A in dietary-exposed Atlantic salmon (*Salmo salar*). *Food Addit Contam Part A Chem Anal Control Expo Risk Assess* 34(7):1211–1224. <https://doi.org/10.1080/19440049.2017.1321149>
- Bracarense AP, Lucioi J, Grenier B, Drociunas Pacheco G, Moll WD, Schatzmayr G, Oswald IP (2012) Chronic ingestion of deoxynivalenol and fumonisin, alone or in interaction, induces morphological and immunological changes in the intestine of piglets. *Br J Nutr* 107(12):1776–1786. <https://doi.org/10.1017/S0007114511004946>
- Bryden WL (2012) Mycotoxin contamination of the feed supply chain: implications for animal productivity and feed security. *Anim Feed Sci Technol* 173(1–2):134–158. <https://doi.org/10.1016/j.anifeedsci.2011.12.014>
- Carlson DB, Williams DE, Spitsbergen JM, Ross PF, Bacon CW, Meredith FI, Riley RT (2001) Fumonisin B1 promotes aflatoxin B1 and N-methyl-N'-nitro-nitrosoguanidine-initiated liver tumors in rainbow trout. *Toxicol Appl Pharmacol* 172(1):29–36. <https://doi.org/10.1006/taap.2001.9129>
- Commission E (2006) Commission Recommendation of 17 August 2006 on the presence of deoxynivalenol, zearalenone, ochratoxin A, T-2 and HT-2 and fumonisins in products intended for animal feeding (2006/576/EC). *Off J Eur Union* 229:7–9
- Di Paola D, Iaria C, Capparucci F, Arangia A, Crupi R, Cuzzocrea S, Spanò N, Gugliandolo E, Peritore AF (2022) Impact of mycotoxin contaminations on aquatic organisms: toxic effect of aflatoxin B1 and fumonisin B1 mixture. *Toxins* 14(8):518
- Feijó Corrêa JA, Orso PB, Bordin K, Hara RV, Luciano FB (2018) Toxicological effects of fumonisin B1 in combination with other *Fusarium* toxins. *Food Chem Toxicol* 121:483–494. <https://doi.org/10.1016/j.fct.2018.09.043>
- Francis G, Makkar HPS, Becker K (2001) Antinutritional factors present in plant-derived alternate fish feed ingredients and their effects in fish. *Aquaculture* 199(3):197–227. [https://doi.org/10.1016/S0044-8486\(01\)00526-9](https://doi.org/10.1016/S0044-8486(01)00526-9)
- Galeana-Sánchez E, Sánchez-Rangel D, de la Torre-Hernández ME, Nájera-Martínez M, Ramos-Villegas P, Plasencia J (2017) Fumonisin B1 produced in planta by *Fusarium verticillioides* is associated with inhibition of maize  $\beta$ -1,3-glucanase activity and increased aggressiveness. *Physiol Mol Plant Pathol* 100:75–83. <https://doi.org/10.1016/j.pmp.2017.07.003>
- Gbore FA, Adewole AM, Oginni O, Oguntolu MF, Bada AM, Akele O (2010) Growth performance, haematology and serum biochemistry of African catfish (*Clarias gariepinus*) fingerlings fed graded levels of dietary fumonisin B1. *Mycotoxin Res* 26(4):221–227. <https://doi.org/10.1007/s12550-010-0059-2>
- Ghafariarsani H, Imani A, Niewold TA, Pietsch-Schmied C, Sarvi Moghanlou K (2021) Synergistic toxicity of dietary aflatoxin B1 (AFB1) and zearalenone (ZEN) in rainbow trout (*Oncorhynchus mykiss*) is attenuated by anabolic effects. *Aquaculture* 541:736793. <https://doi.org/10.1016/j.aquaculture.2021.736793>
- Glencross B (2016) 3 - Understanding the nutritional and biological constraints of ingredients to optimize their application in aquaculture feeds. In: Nates SF (ed) *Aquafeed Formulation*. Academic Press, San Diego, pp 33–73. <https://doi.org/10.1016/B978-0-12-800873-7.00003-8>
- Gonçalves RA, Dias J, Schatzmayr D (2020a) Effect of low levels of fumonisin contamination on gilthead seabream (*Sparus aurata*). *J World Aquac Soc* 51(6):1313–1325. <https://doi.org/10.1111/jwas.12730>
- Gonçalves RA, Dias J, Serradeiro R, Schatzmayr D (2020b) Impact of graded dietary fumonisin contamination levels on the growth performance and selected health indices of turbot (*Psetta maxima*). *J Appl Aquac* 1–16. <https://doi.org/10.1080/10454438.2020.1824846>
- Gonçalves RA, Hofstetter U, Schatzmayr D, Jenkins T (2018a) Mycotoxins in Southeast Asian aquaculture: plant-based meals and finished feeds. *World Mycotoxin J* 11(2):265–275. <https://doi.org/10.3920/WMJ2017.2239>
- Gonçalves RA, Menanteau-Ledouble S, Schöller M, Eder A, Schmidt-Posthaus H, Mackenzie S, El-Matbouli M (2019) Effects of deoxynivalenol exposure time and contamination levels on rainbow trout. *J World Aquaculture Soc* 50(1):137–154. <https://doi.org/10.1111/jwas.12542>
- Gonçalves RA, Navarro-Guillén C, Gilannejad N, Dias J, Schatzmayr D, Bichl G, Czabany T, Moyano FJ, Rema P, Yúfera M, Mackenzie S, Martínez-Rodríguez G (2018b) Impact of deoxynivalenol on rainbow trout: Growth performance, digestibility, key gene expression regulation and metabolism. *Aquaculture* 490:362–372. <https://doi.org/10.1016/j.aquaculture.2018.03.001>
- Gonçalves RA, Schatzmayr D, Albalat A, Mackenzie S (2020c) Mycotoxins in aquaculture: feed and food. *Rev Aquac* 12(1):145–175. <https://doi.org/10.1111/raq.12310>
- Greco M, Pardo A, Pose G (2015) Mycotoxigenic fungi and natural co-occurrence of mycotoxins in rainbow trout (*Oncorhynchus mykiss*) feeds. *Toxins (basel)* 7(11):4595–4609. <https://doi.org/10.3390/toxins7114595>
- Grenier B, Loureiro-Bracarense A-P, Lucioi J, Pacheco GD, Cossalter A-M, Moll W-D, Schatzmayr G, Oswald IP (2011) Individual and combined effects of subclinical doses of deoxynivalenol and fumonisins in piglets. *Mol Nutr Food Res* 55(5):761–771. <https://doi.org/10.1002/mnfr.201000402>
- Hardy RW (2010) Utilization of plant proteins in fish diets: effects of global demand and supplies of fishmeal. *Aquac Res* 41(5):770–776. <https://doi.org/10.1111/j.1365-2109.2009.02349.x>
- Hooft J, Bureau D (2017) Evaluation of the efficacy of a commercial feed additive against the adverse effects of feed-borne deoxynivalenol (DON) on the performance of rainbow trout (*Oncorhynchus mykiss*). *Aquaculture* 473. <https://doi.org/10.1016/j.aquaculture.2017.02.019>
- Hooft JM, Bureau DP (2021) Deoxynivalenol: Mechanisms of action and its effects on various terrestrial and aquatic species. *Food Chem Toxicol* 112616. <https://doi.org/10.1016/j.fct.2021.112616>
- Hooft JM, Elmor AEHI, Encarnaçao P, Bureau DP (2011) Rainbow trout (*Oncorhynchus mykiss*) is extremely sensitive to the feed-borne *Fusarium* mycotoxin deoxynivalenol (DON). *Aquaculture* 311(1–4):224–232. <https://doi.org/10.1016/j.aquaculture.2010.11.049>
- Hooft JM, Ferreira C, Lumsden JS, Sulyok M, Krska R, Bureau DP (2019a) The effects of naturally occurring or purified

- deoxynivalenol (DON) on growth performance, nutrient utilization and histopathology of rainbow trout (*Oncorhynchus mykiss*). *Aquaculture* 505:319–332. <https://doi.org/10.1016/j.aquaculture.2019.02.032>
- Hooft JM, Wu P, Powell CD, Lou Y, Squires EJ, Cant JP, Sulyok M, Krska R, Bureau DP (2019b) A comparative investigation of the effects of feed-borne deoxynivalenol (DON) on growth performance, nutrient utilization and metabolism of detoxification in rainbow trout (*Oncorhynchus mykiss*) and Nile tilapia (*Oreochromis niloticus*) fed diets containing different levels of digestible carbohydrates. *Aquaculture* 505:306–318. <https://doi.org/10.1016/j.aquaculture.2019.02.019>
- Koletsis P, Schrama JW, Graat EAM, Wiegertjes GF, Lyons P, Pietsch C (2021) The occurrence of mycotoxins in raw materials and fish feeds in Europe and the potential effects of deoxynivalenol (DON) on the health and growth of farmed fish species. *Toxins* 13(6):403
- Koletsis P, Wiegertjes GF, Graat EAM, Lyons P, Schrama J (2022) Time- and dose-dependent effects of dietary deoxynivalenol (DON) in rainbow trout (*Oncorhynchus mykiss*) at organism and tissue level. *Toxins* 14(11):810
- Kraan S (2013) Mass-cultivation of carbohydrate rich macroalgae, a possible solution for sustainable biofuel production. *Mitig Adapt Strat Glob Change* 18(1):27–46. <https://doi.org/10.1007/s11027-010-9275-5>
- Lumlertdacha S, Lovell RT, Shelby RA, Lenz SD, Kemppainen BW (1995) Growth, hematology, and histopathology of channel catfish, *Ictalurus punctatus*, fed toxins from *Fusarium moniliforme*. *Aquaculture* 130(2):201–218. [https://doi.org/10.1016/0044-8486\(94\)00219-E](https://doi.org/10.1016/0044-8486(94)00219-E)
- Marijani E, Wainaina JM, Charo-Karisa H, Nzayisenga L, Munguti J, Joselin Benoit Gnonlonfin G, Kigadye E, Okoth S (2017) Mycoflora and mycotoxins in finished fish feed and feed ingredients from smallholder farms in East Africa. *Egypt J Aquat Res* 43(2):169–176. <https://doi.org/10.1016/j.ejar.2017.07.001>
- Matejova I, Modra H, Blahova J, Franc A, Fictum P, Sevcikova M, Svobodova Z (2014) The effect of mycotoxin deoxynivalenol on haematological and biochemical indicators and histopathological changes in rainbow trout (*Oncorhynchus mykiss*). *BioMed Res Int* 2014. <https://doi.org/10.1155/2014/310680>
- Mwihia EW, Lyche JL, Mbutia PG, Ivanova L, Uhlig S, Gathumbi JK, Maina JG, Eshitera EE, Eriksen GS (2020) Co-Occurrence and Levels of Mycotoxins in Fish Feeds in Kenya. *Toxins* 12(10):627
- Naylor RL, Hardy RW, Bureau DP, Chiu A, Elliott M, Farrell AP, Forster I, Gatlin DM, Goldberg RJ, Hua K, Nichols PD (2009) Feeding aquaculture in an era of finite resources. *Proc Natl Acad Sci* 106(36):15103–15110. <https://doi.org/10.1073/pnas.0905235106>
- Naylor RL, Hardy RW, Buschmann AH, Bush SR, Cao L, Klinger DH, Little DC, Lubchenco J, Shumway SE, Troell M (2021) A 20-year retrospective review of global aquaculture. *Nature* 591(7851):551–563. <https://doi.org/10.1038/s41586-021-03308-6>
- NRC N (2011) Nutrient requirements of fish and shrimp. *Aquacult Int* 20:601–602
- Paterson RRM, Lima N (2010) How will climate change affect mycotoxins in food? *Food Res Int* 43(7):1902–1914. <https://doi.org/10.1016/j.foodres.2009.07.010>
- Peillon C, Laborde M, Travel A, Mika A, Bailly JD, Cleve D, Boissieu C, Le Guennec J, Albaric O, Labrut S, Froment P, Tardieu D, Guerre P (2021) Toxic effects of fumonisins, deoxynivalenol and zearalenone alone and in combination in ducks fed the maximum EU tolerated level. *Toxins* 13(2):152. <https://doi.org/10.3390/toxins13020152>
- Perrone G, Ferrara M, Medina A, Pascale M, Magan N (2020) Toxicogenic fungi and mycotoxins in a climate change scenario: ecology, genomics, distribution, prediction and prevention of the risk. *Microorganisms* 8(10):1496
- Pietsch C, Burkhardt-Holm P (2015) Feed-borne exposure to deoxynivalenol leads to acute and chronic effects on liver enzymes and histology in carp. *World Mycotoxin J* 8(5):619–627. <https://doi.org/10.3920/WMJ2015.1879>
- Pietsch C, Schulz C, Rovira P, Kloas W, Burkhardt-Holm P (2014) Organ damage and hepatic lipid accumulation in carp (*Cyprinus carpio* L.) after feed-borne exposure to the mycotoxin, deoxynivalenol (DON). *Toxins* 6 (2):756–778. <https://doi.org/10.3390/toxins6020756>
- Riley RT, Wang E, Merrill AH Jr (1994) Liquid chromatographic determination of sphingamine and sphingosine: use of the free Sphinganine-to-Sphingosine ratio as a biomarker for consumption of Fumonisin. *J AOAC Int* 77(2):533–540
- Rokvić N, Aksentijević K, Kureljušić J, Vasiljević M, Todorović N, Zdravković N, Stojanac N (2020) Occurrence and transfer of mycotoxins from ingredients to fish feed and fish meat of common carp (*Cyprinus carpio*) in Serbia. *World Mycotoxin J* 13(4):545–552
- Ryerse IA, Hooft JM, Bureau DP, Anthony Hayes M, Lumsden JS (2016) Diets containing corn naturally contaminated with deoxynivalenol reduces the susceptibility of rainbow trout (*Oncorhynchus mykiss*) to experimental *Flavobacterium psychrophilum* infection. *Aquac Res* 47(3):787–796. <https://doi.org/10.1111/are.12537>
- Schindelin J, Arganda-Carreras I, Frise E, Kaynig V, Longair M, Pietzsch T, Preibisch S, Rueden C, Saalfeld S, Schmid B, Tinevez J-Y, White DJ, Hartenstein V, Eliceiri K, Tomancak P, Cardona A (2012) Fiji: an open-source platform for biological-image analysis. *Nat Methods* 9(7):676–682. <https://doi.org/10.1038/nmeth.2019>
- Smith MC, Madec S, Coton E, Hymery N (2016) Natural co-occurrence of mycotoxins in foods and feeds and their in vitro combined toxicological effects. *Toxins (basel)* 8(4):94. <https://doi.org/10.3390/toxins8040094>
- Smith TK, McMillan EG, Castillo JB (1997) Effect of feeding blends of *Fusarium* mycotoxin-contaminated grains containing deoxynivalenol and fusaric acid on growth and feed consumption of immature swine. *J Anim Sci* 75(8):2184–2191. <https://doi.org/10.2527/1997.7582184x>
- Speijers GJA, Speijers MHM (2004) Combined toxic effects of mycotoxins. *Toxicol Lett* 153(1):91–98. <https://doi.org/10.1016/j.toxlet.2004.04.046>
- Streit E, Schatzmayr G, Tassis P, Tzika E, Marin D, Taranu I, Tabuc C, Nicolau A, Aprodu I, Puel O, Oswald IP (2012) Current situation of mycotoxin contamination and co-occurrence in animal feed-focus on Europe. *Toxins* 4(10):788–809. <https://doi.org/10.3390/toxins4100788>
- Tacon AGJ (2020) Trends in global aquaculture and aquafeed production: 2000–2017. *Rev Fisher Sci Aquaculture* 28(1):43–56. <https://doi.org/10.1080/23308249.2019.1649634>
- Thrane U (2014) *Fusarium*. In: Batt CA, Tortorello ML (eds) *Encyclopedia of Food microbiology* (Second Edition). Academic Press, Oxford, pp 76–81. <https://doi.org/10.1016/B978-0-12-384730-0.00141-5>
- Tola S, Bureau DP, Hooft JM, Beamish FW, Sulyok M, Krska R, Encarnacao P, Petkam R (2015) Effects of Wheat naturally contaminated with *Fusarium* mycotoxins on growth performance and selected health indices of red tilapia (*Oreochromis niloticus* x *O. mossambicus*). *Toxins (Basel)* 7 (6):1929–1944. <https://doi.org/10.3390/toxins7061929>
- Tuan NA, Manning BB, Lovell RT, Rottinghaus GE (2003) Responses of Nile tilapia (*Oreochromis niloticus*) fed diets containing different concentrations of moniliformin or fumonisin B1. *Aquaculture* 217(1):515–528. [https://doi.org/10.1016/S0044-8486\(02\)00268-5](https://doi.org/10.1016/S0044-8486(02)00268-5)
- Turchini GM, Trushenski JT, Glencross BD (2019) Thoughts for the future of aquaculture nutrition: realigning perspectives to reflect contemporary issues related to judicious use of marine resources in Aquafeeds. *N Am J Aquac* 81(1):13–39. <https://doi.org/10.1002/naaq.10067>
- Yang G, Wang Y, Wang T, Wang D, Weng H, Wang Q, Chen C (2021) Variations of enzymatic activity and gene expression in zebrafish (*Danio rerio*) embryos co-exposed to zearalenone and fumonisin

- B1. *Ecotoxicol Environ Saf* 222:112533. <https://doi.org/10.1016/j.ecoenv.2021.112533>
- Yildirim M, Manning BB, Lovell RT, Grizzle JM, Rottinghaus GE (2000) Toxicity of moniliformin and fumonisin B1 fed singly and in combination in diets for young channel catfish *Ictalurus punctatus*. *J World Aquaculture Soc* 31(4):599–608. <https://doi.org/10.1111/j.1749-7345.2000.tb00909.x>
- Zhou H, George S, Li C, Gurusamy S, Sun X, Gong Z, Qian H (2017) Combined toxicity of prevalent mycotoxins studied in fish cell line and zebrafish larvae revealed that type of interactions is dose-dependent. *Aquat Toxicol* 193:60–71. <https://doi.org/10.1016/j.aquatox.2017.09.030>
- Zingales V, Taroncher M, Martino PA, Ruiz M-J, Caloni F (2022) Climate Change and Effects on Molds and Mycotoxins. *Toxins* 14(7):445

**Publisher's Note** Springer Nature remains neutral with regard to jurisdictional claims in published maps and institutional affiliations.