

Neth Heart J (2021) 29:318–329  
<https://doi.org/10.1007/s12471-021-01539-w>



## BIO FOr CARE: biomarkers of hypertrophic cardiomyopathy development and progression in carriers of Dutch founder truncating *MYBPC3* variants – design and status

M. Jansen · I. Christiaans · S. N. van der Crabben · M. Michels · R. Huurman · Y. M. Hoedemaekers · D. Dooijes · J. D. H. Jongbloed · L. G. Boven · R. H. Lekanne Deprez · A. A. M. Wilde · J. J. M. Jans · J. van der Velden · R. A. de Boer · J. P. van Tintelen · F. W. Asselbergs · A. F. Baas

Accepted: 14 January 2021 / Published online: 2 February 2021  
 © The Author(s) 2021

### Abstract

**Background** Hypertrophic cardiomyopathy (HCM) is the most prevalent monogenic heart disease, commonly caused by truncating variants in the *MYBPC3* gene. HCM is an important cause of sudden cardiac death; however, overall prognosis is good and penetrance in genotype-positive individuals is incomplete. The underlying mechanisms are poorly understood and risk stratification remains limited.

**Aim** To create a nationwide cohort of carriers of truncating *MYBPC3* variants for identification of predictive biomarkers for HCM development and progression.

**Methods** In the multicentre, observational BIO FOr CARE (Identification of BIOmarkers of hypertrophic

cardiomyopathy development and progression in Dutch *MYBPC3* Founder variant CARriers) cohort, carriers of the c.2373dupG, c.2827C>T, c.2864\_2865delCT and c.3776delA *MYBPC3* variants are included and prospectively undergo longitudinal blood collection. Clinical data are collected from first presentation onwards. The primary outcome constitutes a composite endpoint of HCM progression (maximum wall thickness  $\geq 20$  mm, septal reduction therapy, heart failure occurrence, sustained ventricular arrhythmia and sudden cardiac death).

**Results** So far, 250 subjects (median age 54.9 years (interquartile range 43.3, 66.6), 54.8% male) have been

**Supplementary Information** The online version of this article (<https://doi.org/10.1007/s12471-021-01539-w>) contains supplementary material, which is available to authorized users.

M. Jansen (✉) · D. Dooijes · J. J. M. Jans · J. P. van Tintelen · A. F. Baas  
 Department of Genetics, University Medical Centre Utrecht, Utrecht University, Utrecht, The Netherlands  
[m.jansen-2@umcutrecht.nl](mailto:m.jansen-2@umcutrecht.nl)

I. Christiaans · Y. M. Hoedemaekers · J. D. H. Jongbloed · L. G. Boven  
 Department of Genetics, University Medical Centre Groningen, University of Groningen, Groningen, The Netherlands

S. N. van der Crabben · R. H. Lekanne Deprez  
 Department of Clinical Genetics, Amsterdam UMC, University of Amsterdam, Amsterdam, The Netherlands

M. Michels · R. Huurman  
 Department of Cardiology, Thoraxcenter, Erasmus University Medical Centre, Rotterdam, The Netherlands

Y. M. Hoedemaekers  
 Department of Clinical Genetics, Radboud University Medical Centre, Nijmegen, The Netherlands

A. A. M. Wilde  
 Heart Centre, Clinical and Experimental Cardiology, Amsterdam UMC, University of Amsterdam, Amsterdam, The Netherlands

J. van der Velden  
 Department of Physiology, Amsterdam UMC, Vrije Universiteit Amsterdam, Amsterdam Cardiovascular Sciences, Amsterdam, The Netherlands

R. A. de Boer  
 Department of Cardiology, University Medical Centre Groningen, University of Groningen, Groningen, The Netherlands

J. P. van Tintelen · F. W. Asselbergs  
 Netherlands Heart Institute, Utrecht, The Netherlands

F. W. Asselbergs  
 Department of Cardiology, University Medical Centre Utrecht, Utrecht, The Netherlands

Institute of Cardiovascular Science, Faculty of Population Health Sciences, University College London, London, UK  
 Health Data Research UK and Institute of Health Informatics, University College London, London, UK



included. HCM was diagnosed in 169 subjects and dilated cardiomyopathy in 4. The primary outcome was met in 115 subjects. Blood samples were collected from 131 subjects.

**Conclusion** BIO FOR CARE is a genetically homogeneous, phenotypically heterogeneous cohort incorporating a clinical data registry and longitudinal blood collection. This provides a unique opportunity to study biomarkers for HCM development and prognosis. The established infrastructure can be extended to study other genetic variants. Other centres are invited to join our consortium.

**Keywords** Hypertrophic cardiomyopathy · MYBPC3 · Biomarkers · Prognosis

## Introduction

Hypertrophic cardiomyopathy (HCM) is characterised by hypertrophy of the ventricular wall not explained by abnormal loading conditions [1]. HCM is an important cause of sudden cardiac death (SCD) [2] and may also lead to end-stage heart failure and left ventricular outflow tract (LVOT) obstruction [3]. The prevalence of HCM has historically been estimated at 1:500 [4], making it the most common Mendelian heart disease, with more recent estimates as high as 1:200 [5]. HCM is typically inherited as an autosomal dominant disease and a likely pathogenic/pathogenic variant is found in approximately 50% of patients [6, 7]. The most commonly affected gene is *MYBPC3*, which encodes cardiac myosin-binding protein C (cMyBP-C), an important regulator of cardiomyocyte contraction [3].

Despite the association with life-threatening arrhythmia and end-stage heart failure, clinical severity in HCM is highly variable, with low overall mortality [8] and incomplete, age-dependent penetrance in carriers of pathogenic variants (G+) [9]. This highlights the need for risk stratification. Current guidelines advocate the use of the HCM Risk-SCD calculator to identify patients who may benefit from a prophylactic implantable cardioverter-defibrillator [1, 10]. However, prediction of SCD remains imperfect [11] and risk-prediction models of other aspects of HCM have not yet been established. Furthermore, underlying mechanisms contributing to disease progression, such as environmental and additional (epi)genetic factors, are still unclear.

Similarly, prediction of penetrance in G+ phenotype-negative (LVH-) individuals is limited. Risk factors and biomarkers found in exploratory studies, including electrocardiographic abnormalities and impaired diastolic function on echocardiography [12–14], have not yet been validated in large, prospective cohorts. Without such data, these individuals undergo frequent cardiological screenings with a major impact on the health care system and costs.

The Dutch HCM population is relatively genetically homogeneous, with three *MYBPC3* founder variants (c.2373dupG (p.Trp792fs), c.2827C>T (p.Arg943Ter) and c.2864\_2865delCT (p.Pro955fs), each inherited from a distant common ancestor) accounting for up to 35% of Dutch HCM cases [15]. Another truncating *MYBPC3* variant, c.3776delA (p.Gln1259fs), has been identified in multiple independently presenting HCM patients. These genetic variants result in truncated mRNA, absence of truncated cMyBP-C protein and a reduction of functional cMyBP-C (haploinsufficiency) [16], which impairs cardiomyocyte function [17], and have been shown to have a similar prognostic impact [18]. Together, they provide a unique opportunity to study effect modifiers free from confounding resulting from distinct genotypes.

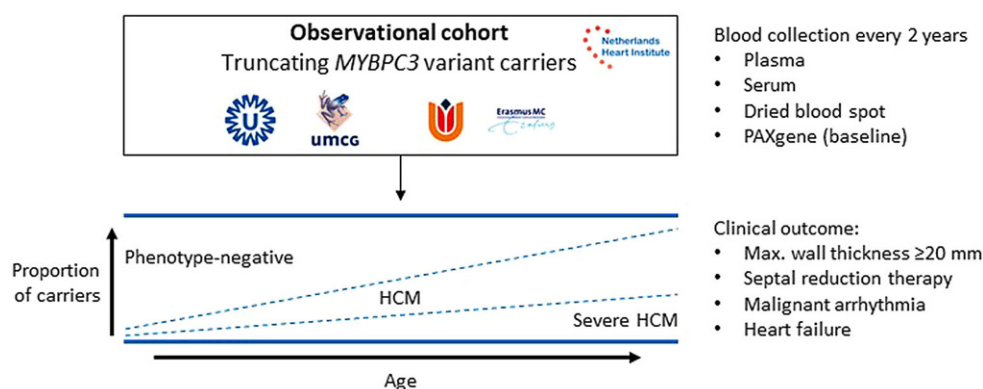
In the BIO FOR CARE (Identification of Biomarkers of hypertrophic cardiomyopathy development and progression in Dutch *MYBPC3* Founder variant CARriers) study we aim to investigate predictive factors and effect modifiers for penetrance and progression of HCM in the genetically homogeneous group of Dutch carriers of truncating *MYBPC3* variants. Here we report the design and current status of this cohort and discuss ongoing and future studies.

## Methods

### Subject inclusion

Subjects are included as part of the ongoing prospective, multicentre, longitudinal, observational BIO FOR CARE cohort, embedded in the CVON DOSIS (Cardiovascular Research Netherlands—Determinants Of Susceptibility In inherited cardiomyopathy: towards novel therapeutic approaches) consortium [19]. The design of this study is illustrated in Fig. 1. In short, clinical data from each subject's first cardiomyopathy-related presentation onwards (due to symptoms or coincidental findings prompting echocardiography and/or cardiac magnetic resonance imaging (MRI), or screening for familial disease) are retrospectively collected in a registry and subjects prospectively undergo blood collection.

Subject inclusion started at the University Medical Centre Utrecht in January 2017, at the University Medical Centre Groningen in December 2017, at the Amsterdam University Medical Centre in January 2019 and is expected to commence shortly at the Erasmus Medical Centre in Rotterdam. G+ index patients (first family member to undergo genetic testing) and family members are identified through the genome diagnostics laboratories of each of these centres and screened for eligibility. Inclusion criteria are carriage of c.2373dupG, c.2827C>T, c.2864\_2865delCT or c.3776delA variant in *MYBPC3* (reference sequence NM\_000256.3) and age  $\geq 18$  years. Patients with prior heart transplantation are included in the clinical data registry, but are excluded from blood collection.



**Fig. 1** Schematic overview of the study design. The BIO FOr CARE (Identification of BIOMarkers of hypertrophic cardiomyopathy development and progression in Dutch *MYBPC3* FOunder variant CARriers) study comprises an observational cohort of Dutch carriers of the c.2373dupG (p.Trp792fs), c.2827C>T (p.Arg943Ter), c.2864\_2865delCT (p.Pro955fs) and c.3776delA (p.Gln1259fs) variants in the *MYBPC3* gene. These variants are predicted to result in truncated mRNA with

absence of truncated protein leading to haploinsufficiency. Subjects across the phenotypic spectrum associated with these variants are prospectively included for blood collection every 2 years and followed up over time. Clinical data are retrospectively collected from the first presentation onwards in a clinical registry to assess potential clinical predictors of disease penetrance and progression. *HCM* hypertrophic cardiomyopathy

This study is performed in accordance with the Helsinki declaration and was approved by the Medical Ethics Committee of the UMC Utrecht. Informed consent is obtained from all subjects.

### Study outcome

The primary outcome of this study is a composite endpoint representing disease progression, consisting of (1) maximum wall thickness (MWT)  $\geq 20$  mm, (2) occurrence of heart failure (congestive heart failure or left ventricular ejection fraction  $< 50\%$ ), (3) LVOT obstruction (LVOT gradient  $\geq 30$  mm Hg with symptoms or  $\geq 50$  mm Hg regardless of symptoms) or (4) malignant arrhythmia (sustained ventricular tachycardia, ventricular fibrillation, appropriate implantable cardioverter-defibrillator intervention, cardiac arrest or SCD).

HCM is diagnosed according to the European Society of Cardiology criteria, summarised as a MWT of  $\geq 15$  mm in probands or  $\geq 13$  mm in first-degree family members, not proportional to abnormal loading conditions [1]. Dilated cardiomyopathy (DCM), which may likewise occur in carriers of *MYBPC3* variants, is diagnosed in accordance with the revised definition of the European Society of Cardiology myocardial and pericardial diseases working group [20]. Subjects fulfilling DCM criteria are carefully evaluated for signs of prior HCM (prior or persisting hypertrophy fulfilling diagnostic criteria for HCM).

### Study data

Study data are collected from electronic health records using a REDCap (Research Electronic Data Capture, Vanderbilt University, Nashville, TN, USA) tool hosted

by the Netherlands Heart Institute. Baseline data include patient demographics, genetic analyses, family history, medical history, laboratory results, and conventional electrocardiography, ambulatory Holter monitoring, exercise test, echocardiography and cardiac MRI parameters. A comprehensive list of clinical variables is provided in the Electronic Supplementary Material (Table S1). The full data dictionary is available upon request. Clinical management and follow-up intervals remain at the discretion of the subject's cardiologist.

### Statistical analysis and sample size calculation

All analyses were conducted in R version 4.0.0 (R Development Core Team, 2017) using RStudio version 1.1.414 (RStudio Team, 2015). Dichotomous variables are presented as counts with percentages and were analysed using two-sided Fisher's exact test. Continuous variables are presented as means  $\pm$  standard deviations or medians with interquartile ranges according to their distribution and analysed using unpaired *t*- or Mann-Whitney U tests accordingly.

According to the 'one in ten' rule of thumb for regression analyses, 30 subjects would have to fulfil the primary outcome to assess one biomarker and correct for two variables (age and sex). Assuming 40% of enrolled subjects to be G+LVH- at baseline, 75% of these G+LVH- subjects to develop a phenotype throughout life and 10% of those developing a phenotype to fulfil the primary outcome, a total of 1000 subjects are required to enrol in the study.

### Blood collection

Standardised blood collection is performed to study potential biomarkers for HCM development and progression. Using 23G winged blood collection sets, venous blood samples are collected and processed within 45 min to obtain 4×500 µl plasma from citrate tubes, 6×500 µl plasma and a dried (whole) blood spot card from lithium-heparin tubes, 6×500 µl serum and a whole-blood PAXgene RNA tube (PreAnalytiX GmbH, Hombrechtikon, Switzerland). The laboratory protocol is provided in the Electronic Supplementary Material (Fig. S1).

### Preliminary results

A flowchart outlining subject inclusion and follow-up is presented in Fig. 2. A total of 250 G+ individuals were included in the study up to 1 January 2020. In 232 subjects the diagnosis could be ascertained. HCM was diagnosed in 169 subjects and DCM without prior diagnosis of HCM in 4 subjects. The remaining 59 subjects were G+ LVH- at the time of inclusion. Baseline characteristics are presented in Tab. 1. A male predominance (66%) was observed among index patients, similar to previous studies [21, 22]. To date, blood samples have been obtained from 131 subjects. As

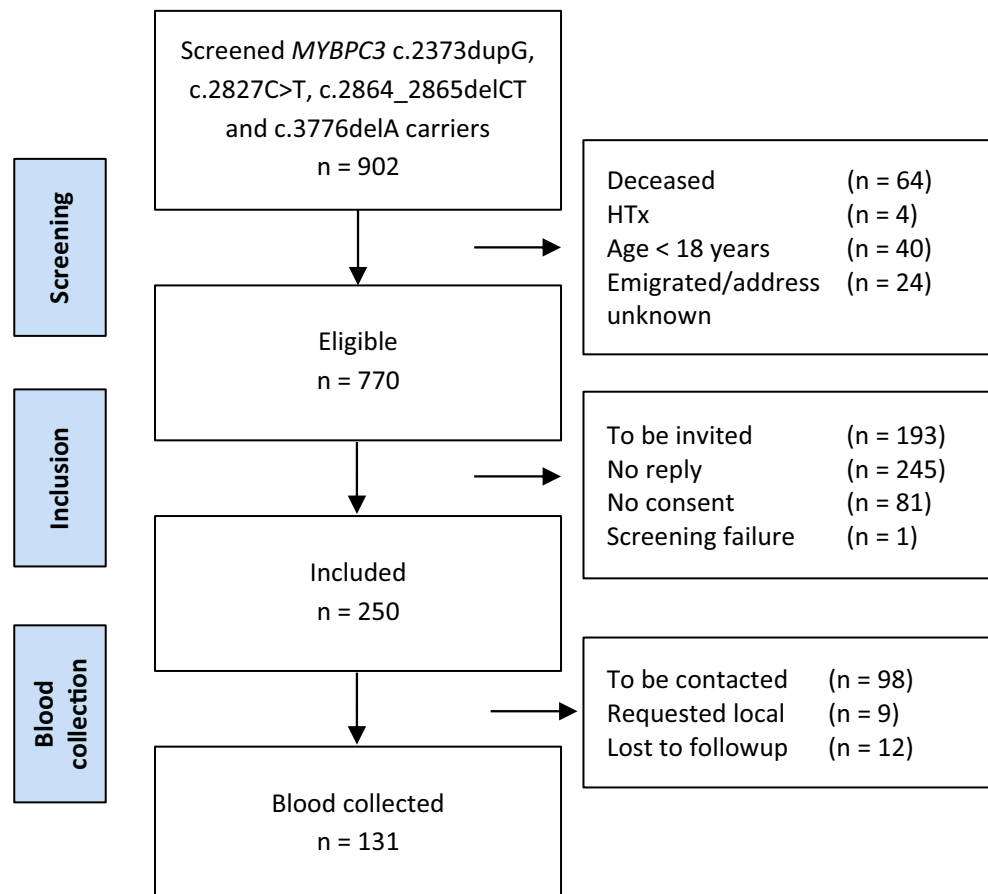
shown in the Electronic Supplementary Material (Table S2), the baseline characteristics of subjects who have undergone blood collection and those who have not are similar.

### Ongoing and future projects

Currently, two biomarker discovery studies are ongoing in the BIO FOR CARE cohort, both utilising metabolomics approaches. Previous studies have indicated a perturbed energy metabolism in HCM with an increased adenosine triphosphate utilisation and decreased energetic efficiency [16, 23]. Acylcarnitines are forms of fatty acids transported into mitochondria for energy production [24]. Changes in acylcarnitine concentrations have been shown to reflect a shift away from the fatty acid oxidation that is normally predominant in cardiac tissue, towards glucose utilisation in a *MYBPC3* HCM mouse model treated with perhexiline (which blocks transportation of fatty acids into mitochondria) [25]. This shift to increased glucose utilisation is more generally observed in heart failure [26], in which increased levels of long-chain acylcarnitines have been associated with worse prognosis [27].

In the BIO FOR CARE study, acylcarnitines were determined using targeted metabolomics in 121 plasma

**Fig. 2** Flowchart showing the results of subject screening, as well as data on inclusion and blood collection. The reasons for exclusion are noted on the right for each stage. *Requested local* denotes subjects who requested blood collection in local cardiological centres. *HTx* heart transplantation



**Table 1** Subject characteristics

		Overall (n= 250)	Index patient (n= 97)	Family member (n= 153)	p-value
<i>Demographics</i>					
Age at inclusion (years)		54.9 [43.3, 66.6]	55.5 [47.3, 67.2]	53.7 [40.5, 64.5]	0.183
Male sex		137 (54.8)	64 (66.0)	73 (47.7)	<b>0.007</b>
Body surface area (m <sup>2</sup> )		1.96 [1.83, 2.13]	1.95 [1.85, 2.19]	1.96 [1.82, 2.10]	0.448
<i>Genetics</i>					
MYBPC3 variant	c.2373dupG	185 (74.0)	69 (71.1)	116 (75.8)	0.500
	c.2827C>T	30 (12.0)	14 (14.4)	16 (10.5)	0.425
	c.2864_2865delCT	15 (6.0)	5 (5.2)	10 (6.5)	0.788
	c.3776delA	20 (8.0)	9 (9.3)	11 (7.2)	0.634
<i>Patient history</i>					
Syncope		28 (11.8)	15 (16.1)	13 (9.0)	0.103
NYHA class	I/II	144 (93.5)	52 (88.1)	92 (96.8)	<b>0.045</b>
	III/IV	10 (6.5)	7 (11.9)	3 (3.2)	
Family history of sudden cardiac death	Any first-degree family member	86 (36.0)			0.489
	In accordance with ESC HCM Risk-SCD calculator	45 (22.1)			0.300
<i>Holter monitoring</i>					
Non-sustained ventricular tachycardia		102 (57.0)	51 (65.4)	51 (50.5)	0.050
<i>Imaging</i>					
Maximum wall thickness (mm)		16 [12, 20]	19 [17, 23]	13 [10, 17]	<b>&lt;0.001</b>
Maximum LV outflow tract gradient (mmHg)		6 [4, 10]	8 [5, 15]	5 [4, 7]	<b>0.003</b>
LV end-diastolic diameter (mm)		46 [40, 50]	45 [40, 49]	46 [41, 50]	0.438
LV ejection fraction (%)		60 [55, 62]	60 [52, 62]	60 [55, 63]	0.232
LV diastolic dysfunction	Normal	69 (59.5)	13 (36.1)	56 (70.0)	<b>&lt;0.001</b>
	Impaired relaxation	29 (25.0)	10 (27.8)	19 (23.8)	
	Pseudonormalisation	11 (9.5)	9 (25.0)	2 (2.5)	
	Restrictive	7 (6.0)	4 (11.1)	3 (3.8)	
LA diameter (mm)		41 [36, 46]	42 [37, 46]	39 [36, 46]	0.533
<i>Outcomes at inclusion</i>					
Phenotype	Phenotype-negative	59 (25.4)	3 (3.2) <sup>a</sup>	56 (40.6)	<b>&lt;0.001</b>
	HCM 13–14 mm	18 (7.8)	1 (1.1)	17 (12.3)	
	HCM ≥ 15 mm	151 (65.1)	88 (93.6)	63 (45.7)	
	DCM	4 (1.7)	2 (2.1)	2 (1.4)	
Primary outcome	Composite endpoint	115 (50.2)	71 (78.0)	44 (31.7)	<b>&lt;0.001</b>
	Maximum wall thickness ≥ 20 mm	88 (39.8)	58 (65.9)	30 (22.4)	<b>&lt;0.001</b>
	Septal reduction therapy	17 (7.8)	14 (16.1)	3 (2.3)	<b>&lt;0.001</b>
	Malignant ventricular arrhythmia	21 (9.3)	14 (15.4)	7 (5.1)	<b>0.011</b>
	Heart failure	47 (22.0)	30 (34.9)	17 (13.2)	<b>&lt;0.001</b>
	Congestive heart failure	28 (13.6)	17 (21.8)	11 (8.5)	<b>0.011</b>
Systolic heart failure	33 (16.0)	20 (26.3)	13 (9.9)	<b>0.003</b>	

NYHA New York Heart Association, ESC European Society of Cardiology, SCD sudden cardiac death, LV left ventricular, LA left atrial, HCM hypertrophic cardiomyopathy, DCM dilated cardiomyopathy

Continuous data are shown as means ± standard deviation for normally distributed variables or median [interquartile range] for non-normally distributed variables. Dichotomous and categorical data are shown as counts (% of valid). p-values < 0.05 are depicted in bold

<sup>a</sup>Incidental finding in one subject and genetic testing prompted by a sudden cardiac death of a family member in two subjects

samples, together with 27 samples collected prior to genetic testing as part of the UNRAVEL biobank [28], including 12 genotype-negative relatives not eligible for inclusion in BIO FOr CARE. To further study changes in the metabolome associated with HCM, untargeted metabolomics using a previously published

direct-infusion high-resolution mass spectrometry platform [29] was performed in a nested case-control study, consisting of 30 subjects with a severe phenotype and 30 age- and sex-matched subjects with a mild or no phenotype, as well as 10 age- and sex-



matched genotype-negative family members from the UNRAVEL biobank.

Additionally, an exploratory proteomics study using the Olink Cardiovascular III multiplex immunoassay (for more information, visit: <https://www.olink.com/products/cvd-iii-panel/>) is being designed. Furthermore, the BIO FOr CARE infrastructure is currently being used for observational cohort studies involving other HCM genotypes and for gene-expression studies in induced pluripotent stem-cell-derived cardiomyocytes, and will be used for potential future genome-wide association studies/polygenic risk score analyses.

## Discussion

The BIO FOr CARE cohort offers a unique opportunity to investigate predictive factors and effect modifiers for penetrance and progression of HCM. Currently, 250 carriers of truncating *MYBPC3* variants across the phenotypic spectrum have been included. Blood samples have been obtained from 131 subjects and several biomarker discovery studies are currently underway.

Standardisation of blood collection allows for future biomarker studies requiring plasma, serum or RNA. By repeating blood collection at subsequent time points, changes in biomarker concentrations can be validated over time and across progressive stages of the phenotype. The current biomarker studies are still limited to a cross-sectional design. However, longitudinal assessment of biomarkers will become possible over time, as disease onset and progression may occur in carriers during follow-up.

The prognostic utility of biomarkers in HCM is also being studied in several other studies, such as the HCMR—Novel Markers of Prognosis in Hypertrophic Cardiomyopathy (HCMR) study (ClinicalTrials.gov Identifier: NCT01915615) [30], the Predictive Factors and Consequences of Myocardial Fibrosis in Hypertrophic Cardiomyopathy (HCM) study (NCT02922517), the Cardiac Biomarkers in Pediatric Cardiomyopathy (PCM Biomarkers) study (NCT01873976), and the An Integrative-‘Omics’ Study of Cardiomyopathy Patients for Diagnosis and Prognosis in China (AOCC) study (NCT03076580). Our study distinguishes itself by its genotype-driven study population, including carriers of pathogenic variants regardless of their phenotype, and its longitudinal design. The inclusion of G+LVH- individuals is made possible by the widespread availability of genetic screening to family members (covered by the national basic healthcare plan), which has led to the identification of many G+LVH-family members [7]. This provides a unique opportunity to study biomarkers and their prognostic utility at subsequent stages of disease progression. Furthermore, the high prevalence of *MYBPC3* founder variants in the Dutch HCM population allows analyses free from confounding resulting from genetic heterogeneity [15].

Additionally, the ancillary REDCap registry offers a user-friendly, sustainable platform for clinical data collection using standardised definitions. Similar to the Netherlands Arrhythmogenic Cardiomyopathy Registry [31], this may serve as a foundation for future observational studies, involving carriers of other variants and other genetic cardiomyopathies. A wide range of data is collected from the subject's first presentation onwards, enabling both cross-sectional and longitudinal studies as well as hypothesis-driven and hypothesis-generating approaches. New variables can easily be added to accommodate studies focussing on specific disease aspects.

Both data and samples are available to external researchers through submission of an application to our data access board, which consists of investigators from each participating centre. So far, inclusions have focussed on the genetically homogeneous cohort of pathogenic truncating *MYBPC3* variants. Although the prognosis of HCM patients carrying founder variants in *MYBPC3* has been shown to be similar to other G+HCM [18, 21], findings in our current cohort will have to be validated in the general HCM population. An amendment to the BIO FOr CARE protocol to include all HCM genotypes has recently been accepted. External validation may be performed in large multinational cohorts such as the HCMR study [30]. Potential effect modifiers may be further studied in myocardial samples collected from septal myectomies or during heart transplantation.

A limitation of the current study design is the risk of referral bias, as blood collection is limited to academic hospitals, which may hinder patients who are under cardiological follow-up elsewhere and do not live nearby. This likely contributed to the higher than anticipated number of subjects fulfilling the primary outcome at baseline (50%). Extending blood collection to regional hospitals would ameliorate the potential bias. A second limitation is that clinical data were not collected prospectively, resulting in missing data. A further limitation to this study is that event rates are low in HCM [8]. As a result, a large sample size and long follow-up duration are required for prospective and longitudinal studies, for which embedding in a sustainable infrastructure and long-term funding are essential. Finally, as the subjects in this study were ascertained as index patients or through their relatedness to one, results may not be generalisable to carriers of *MYBPC3* variants in the general population. Instead, population-based studies are required to investigate the prognosis of carriers in the general population.

## Conclusion

The BIO FOr CARE cohort incorporates a clinical data registry and standardised prospective blood sample collection, offering a unique opportunity to investigate factors affecting development and progression of

HCM in carriers of truncating founder *MYBPC3* variants. The cohort comprises patients across the phenotypic spectrum, allowing cross-sectional biomarker studies, of which several are under way. Longitudinal collection of blood samples and clinical data allows prospective and longitudinal assessment of biomarkers at progressive stages of HCM. The established collaborations and infrastructure can be extended to study other genotypes and different genetic cardiomyopathies. Other centres are invited to join our consortium.

**Acknowledgements** We greatly thank the patients for their participation in this study.

**Funding** This work was supported by the Netherlands Cardiovascular Research Initiative: an initiative with the support of the Dutch Heart Foundation (CVON2014-40 DOSIS to F.W.A., J.P.v.T., J.v.d.V, M.M. and R.A.d.B.; CVON2015-12 e-Detect to F.W.A, J.P.v.T.; CVON2018-30 PREDICT2 to A.A.M.W., J.P.v.T. and R.A.d.B); the Dutch Heart Foundation (Dekker 2015T041 to A.F.B. and M.J.); the Netherlands Organization for Sciences (NWO)-ZonMW (VICI 91818602 to J.v.d.V.); ZonMW and the Dutch Heart Foundation for the translational research program ENERY trial, project 95105003 (to J.v.d.V and M.M.); UCL Hospitals NIHR Biomedical Research Centre (to F.W.A.).

**Conflict of interest** M. Jansen, I. Christiaans, S.N. van der Crabben, M. Michels, R. Huurman, Y.M. Hoedemaekers, D. Dooijes, J.D.H. Jongbloed, L.G. Boven, R.H. Lekanne Deprez, A.A.M. Wilde, J.J.M. Jans, J. van der Velden, R.A. de Boer, J.P. van Tintelen, F.W. Asselbergs and A.F. Baas declare that they have no competing interests.

**Open Access** This article is licensed under a Creative Commons Attribution 4.0 International License, which permits use, sharing, adaptation, distribution and reproduction in any medium or format, as long as you give appropriate credit to the original author(s) and the source, provide a link to the Creative Commons licence, and indicate if changes were made. The images or other third party material in this article are included in the article's Creative Commons licence, unless indicated otherwise in a credit line to the material. If material is not included in the article's Creative Commons licence and your intended use is not permitted by statutory regulation or exceeds the permitted use, you will need to obtain permission directly from the copyright holder. To view a copy of this licence, visit <http://creativecommons.org/licenses/by/4.0/>.

## References

- Elliott PM, Anastakis A, Borger MA, et al. 2014 ESC guidelines on diagnosis and management of hypertrophic cardiomyopathy: the Task Force for the Diagnosis and Management of Hypertrophic Cardiomyopathy of the European Society of Cardiology (ESC). *Eur Heart J*. 2014;35:2733–79.
- Tseng ZH, Olgin JE, Vittinghoff E, et al. Prospective countywide surveillance and autopsy characterization of sudden cardiac death: POST SCD study. *Circulation*. 2018;137:2689–700.
- Marian AJ, Braunwald E. Hypertrophic cardiomyopathy: genetics, pathogenesis, clinical manifestations, diagnosis, and therapy. *Circ Res*. 2017;121:749–70.
- Maron BJ, Gardin JM, Flack JM, et al. Prevalence of hypertrophic cardiomyopathy in a general population of young adults. Echocardiographic analysis of 4111 subjects in the CARDIA study. Coronary artery risk development in (young) adults. *Circulation*. 1995;92:785–9.
- Semsarian C, Ingles J, Maron MS, et al. New perspectives on the prevalence of hypertrophic cardiomyopathy. *J Am Coll Cardiol*. 2015;65:1249–54.
- Richard P, Charron P, Carrier L, et al. Hypertrophic cardiomyopathy: distribution of disease genes, spectrum of mutations, and implications for a molecular diagnosis strategy. *Circulation*. 2003;107:2227–32.
- van Velzen HG, Schinkel AFL, Baart SJ, et al. Outcomes of contemporary family screening in hypertrophic cardiomyopathy. *Circ Genom Precis Med*. 2018;11:e1896.
- Maron BJ, Rowin EJ, Casey SA, et al. Hypertrophic cardiomyopathy in adulthood associated with low cardiovascular mortality with contemporary management strategies. *J Am Coll Cardiol*. 2015;65:1915–28.
- Christiaans I, Birnie E, van Langen IM, et al. The yield of risk stratification for sudden cardiac death in hypertrophic cardiomyopathy myosin-binding protein C gene mutation carriers: focus on predictive screening. *Eur Heart J*. 2010;31:842–8.
- O'Mahony C, Jichi F, Pavlou M, et al. A novel clinical risk prediction model for sudden cardiac death in hypertrophic cardiomyopathy (HCM risk-SCD). *Eur Heart J*. 2014;35:2010–20.
- Leong KMW, Chow JJ, Ng FS, et al. Comparison of the prognostic usefulness of the European Society of Cardiology and American Heart Association/American College of Cardiology Foundation risk stratification systems for patients with hypertrophic cardiomyopathy. *Am J Cardiol*. 2018;121:349–55.
- Michels M, Soliman OI, Phefferkorn J, et al. Disease penetrance and risk stratification for sudden cardiac death in asymptomatic hypertrophic cardiomyopathy mutation carriers. *Eur Heart J*. 2009;30:2593–8.
- van Velzen HG, Schinkel AFL, van Grootel RWJ, et al. Five-year prognostic significance of global longitudinal strain in individuals with a hypertrophic cardiomyopathy gene mutation without hypertrophic changes. *Neth Heart J*. 2019;27:117–26.
- van Velzen HG, Schinkel AFL, Menting ME, et al. Prognostic significance of anterior mitral valve leaflet length in individuals with a hypertrophic cardiomyopathy gene mutation without hypertrophic changes. *J Ultrasound*. 2018;21:217–24.
- Christiaans I, Nannenberg EA, Dooijes D, et al. Founder mutations in hypertrophic cardiomyopathy patients in the Netherlands. *Neth Heart J*. 2010;18:248–54.
- van Dijk SJ, Dooijes D, dos Remedios C, et al. Cardiac myosin-binding protein C mutations and hypertrophic cardiomyopathy: haploinsufficiency, deranged phosphorylation, and cardiomyocyte dysfunction. *Circulation*. 2009;119:1473–83.
- McNamara JW, Li A, Lal S, et al. *MYBPC3* mutations are associated with a reduced super-relaxed state in patients with hypertrophic cardiomyopathy. *PLoS One*. 2017;12:e180064.
- Nannenberg EA, Michels M, Christiaans I, et al. Mortality risk of untreated myosin-binding protein C-related hypertrophic cardiomyopathy: insight into the natural history. *J Am Coll Cardiol*. 2011;58:2406–14.
- de Boer RA, Nijenkamp L, Silljé HHW, et al. Strength of patient cohorts and biobanks for cardiomyopathy research. *Neth Heart J*. 2020;28(Suppl 1):50–6.
- Pinto YM, Elliott PM, Arbustini E, et al. Proposal for a revised definition of dilated cardiomyopathy, hypokinetic non-



Advertisement placed here.



Houten 2021



Advertisement placed here.



Houten 2021

Advertisement placed here.



Houten 2021

Advertisement placed here.



Houten 2021

- dilated cardiomyopathy, and its implications for clinical practice: a position statement of the ESC working group on myocardial and pericardial diseases. *Eur Heart J.* 2016;37:1850–8.
21. van Velzen HG, Schinkel AFL, Oldenburg RA, et al. Clinical characteristics and long-term outcome of hypertrophic cardiomyopathy in individuals with a MYBPC3 (myosin-binding protein C) founder mutation. *Circ Cardiovasc Genet.* 2017;10:e1660.
  22. Canepa M, Fumagalli C, Tini G, et al. Temporal trend of age at diagnosis in hypertrophic cardiomyopathy: an analysis of the International Sarcomeric Human Cardiomyopathy Registry. *Circ Heart Fail.* 2020;13:e7230.
  23. van der Velden J, Tocchetti CG, Varricchi G, et al. Metabolic changes in hypertrophic cardiomyopathies: scientific update from the Working Group of Myocardial Function of the European Society of Cardiology. *Cardiovasc Res.* 2018;114:1273–80.
  24. Kerner J, Hoppel C. Fatty acid import into mitochondria. *Biochim Biophys Acta.* 2000;1486:1–17.
  25. Gehmlich K, Dodd MS, Allwood JW, et al. Changes in the cardiac metabolome caused by perhexiline treatment in a mouse model of hypertrophic cardiomyopathy. *Mol Biosyst.* 2015;11:564–73.
  26. Lionetti V, Stanley WC, Recchia FA. Modulating fatty acid oxidation in heart failure. *Cardiovasc Res.* 2011;90:202–9.
  27. Ahmad T, Kelly JP, McGarrah RW, et al. Prognostic implications of long-chain acylcarnitines in heart failure and reversibility with mechanical circulatory support. *J Am Coll Cardiol.* 2016;67:291–9.
  28. Sammani A, Jansen M, Linschoten M, et al. UNRAVEL: big data analytics research data platform to improve care of patients with cardiomyopathies using routine electronic health records and standardised biobanking. *Neth Heart J.* 2019;27:426–34.
  29. Haijes HA, Willemsen M, Van der Ham M, et al. Direct infusion based metabolomics identifies metabolic disease in patients' dried blood spots and plasma. *Metabolites.* 2019;9:12.
  30. Kramer CM, Appelbaum E, Desai MY, et al. Hypertrophic Cardiomyopathy Registry: the rationale and design of an international, observational study of hypertrophic cardiomyopathy. *Am Heart J.* 2015;170:223–30.
  31. Bosman LP, Verstraelen TE, van Lint FHM, et al. The Netherlands Arrhythmogenic Cardiomyopathy Registry: design and status update. *Neth Heart J.* 2019;27:480–6.