




A freaky artery

R. Joustra¹ · A. P. J. van Dijk¹ · H. W. J. Meijburg² · M. Boulaksil¹ 

Published online: 22 October 2018
© The Author(s) 2018

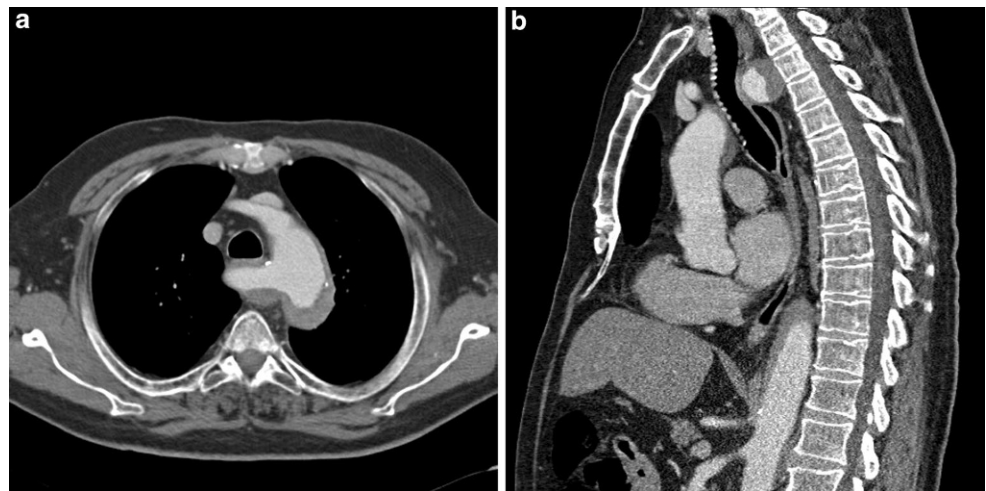
A 77-year-old male patient, with an irrelevant cardiovascular history, was referred to our hospital with acute severe interscapular pain arising at rest. A computed tomography angiography (CTA) was performed (Fig. 1a, b). What is your diagnosis?

Answer

You will find the answer elsewhere in this issue.

Open Access This article is distributed under the terms of the Creative Commons Attribution 4.0 International License (<http://creativecommons.org/licenses/by/4.0/>), which permits unrestricted use, distribution, and reproduction in any medium, provided you give appropriate credit to the original author(s) and the source, provide a link to the Creative Commons license, and indicate if changes were made.

Fig. 1 **a** Transversal CT section of our patient. **b** Sagittal CT section



✉ M. Boulaksil
m.boulaksil@gmail.com

¹ Department of Cardiology, Radboud University Medical Center, Nijmegen, The Netherlands

² Department of Cardiology, Jeroen Bosch Hospital, 's-Hertogenbosch, The Netherlands

