

Co-Ti (Cobalt-Titanium)

H. Okamoto

Many researchers investigated the relationship between the (α Co) and (ϵ Co) phases in the Co-Ti system by means of heating-cooling curves, metallography, and electron-probe microanalysis. Experimental data were widely scattered, as reviewed by [1999Zao], presumably due to very sluggish transitions at low temperatures. Figure 1 shows the phase

relationship assessed by [1999Zao]. [Massalski2] did not show the Co-Ti phase diagram below 600 °C.

References

1999Zao: J.C. Zao: *Z. Metallkd.*, 1999, vol. 90 (3), pp. 223-32.

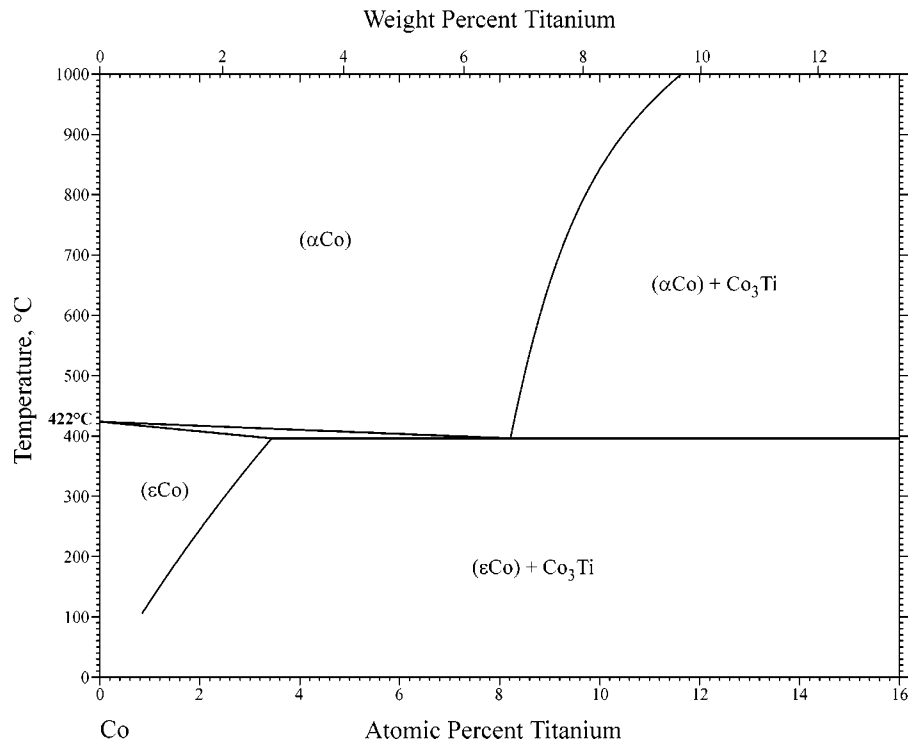


Fig. 1 Co-Ti phase diagram