



Correction to: Does quantification of [^{11}C]meta-hydroxyephedrine and [^{13}N]ammonia kinetics improve risk stratification in ischemic cardiomyopathy

Jean Z. Wang, MD,^{a,b} Jason G. E. Zelt, PhD,^{a,b} Nicole Kaps, BSc,^a
Aaryn Lavallee, BEng,^a Jennifer M. Renaud, MSc,^{a,c} Benjamin Rotstein, PhD,^{b,f}
Rob S. B. Beanlands, MD,^{a,b} James A. Fallavollita, MD,^{d,e} John M. Canty Jr., MD,^{d,e} and
Robert A. deKemp, PhD^{a,b}

^a Department of Medicine (Cardiology), University of Ottawa Heart Institute, Ottawa, ON, Canada

^b Faculty of Medicine, University of Ottawa, Ottawa, ON, Canada

^c INVIA Medical Imaging Solutions, Ann Arbor, MI

^d VA Western New York Healthcare System, Buffalo, NY

^e Division of Cardiovascular Medicine, University at Buffalo, Buffalo, NY

^f Department of Biochemistry, Microbiology and Immunology, University of Ottawa, Ottawa, ON, Canada

doi:10.1007/s12350-021-02779-4

**CORRECTION TO: JOURNAL OF NUCLEAR
CARDIOLOGY [HTTPS://DOI.ORG/10.1007/S12
350-021-02732-5](https://doi.org/10.1007/s12350-021-02732-5)**

Please note the corrections in Figure 7. The top of Figure 7 was cut off due to a production error. The correct Figure 7 is displayed here:

The original article has been corrected.

The original article can be found online at <https://doi.org/10.1007/s12350-021-02732-5>.

Reprint requests: Robert A. deKemp, PhD, Department of Medicine (Cardiology), University of Ottawa Heart Institute, 40 Ruskin Street, Ottawa, ON K1Y 4W7, Canada; RAdeKemp@ottawaheart.ca

J Nucl Cardiol 2021;28:2419–20.

1071-3581/\$34.00

Copyright © 2021 American Society of Nuclear Cardiology.

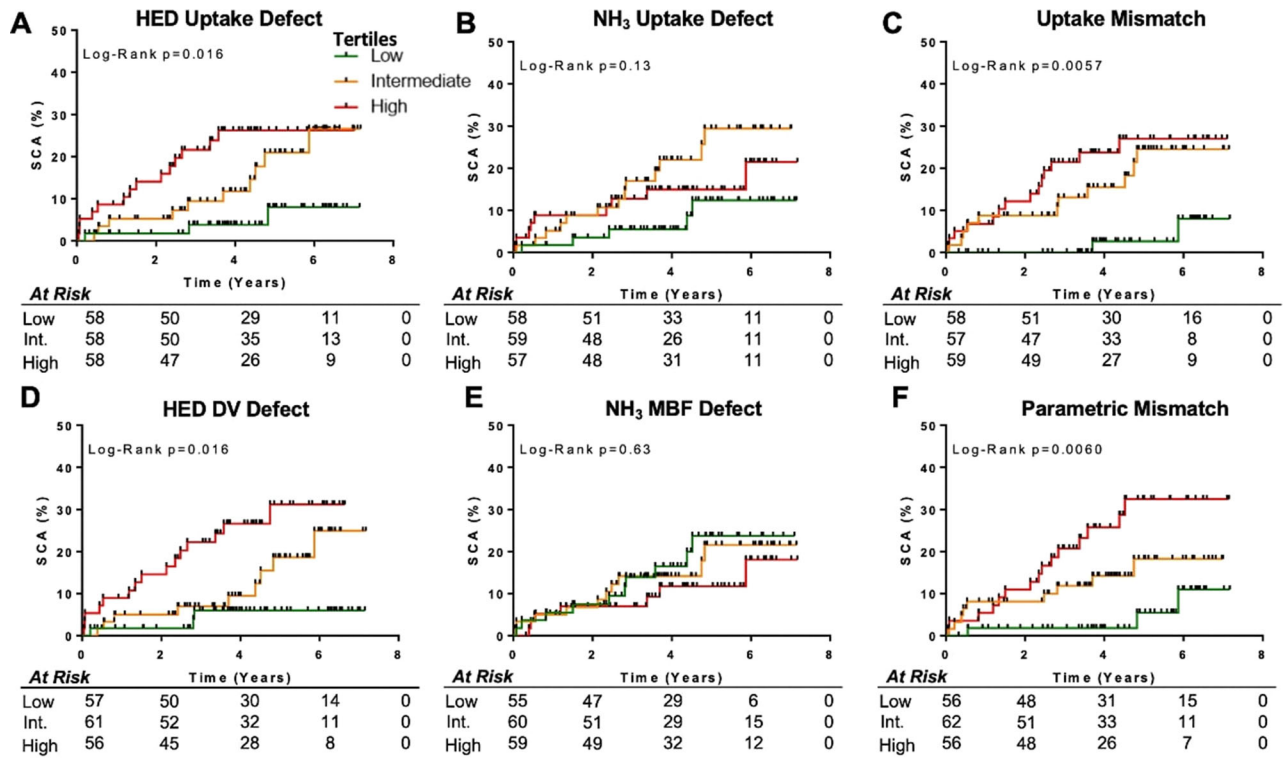


Figure 7. Kaplan-Meier curves demonstrating incidence of SCA in tertiles of HED and NH₃ innervation and perfusion parameters. HED uptake defect (A), HED DV defect (D), NH₃-HED uptake mismatch (C), and MBF-DV parametric mismatch (F) scores were significant predictors of SCA ($P < .05$), whereas NH₃ uptake defect (B) and NH₃ MBF defect (E) scores were not ($P > .05$).