



NR1 Splicing Variant NR1a in Cerebellar Granule Neurons Constitutes a Better Motor Learning in the Mouse

Ting Tan^{1,2} · Linyan Jiang² · Zhengxiao He² · Xuejiao Ding² · Xiaoli Xiong² · Mingxi Tang³ · Yuan Chen¹ · Yaping Tang²

Accepted: 3 October 2023
© The Author(s) 2023

Abstract

As an excitatory neuron in the cerebellum, the granule cells play a crucial role in motor learning. The assembly of NMDAR in these neurons varies in developmental stages, while the significance of this variety is still not clear. In this study, we found that motor training could specially upregulate the expression level of NR1a, a splicing form of NR1 subunit. Interestingly, overexpression of this splicing variant in a cerebellar granule cell-specific manner dramatically elevated the NMDAR binding activity. Furthermore, the NR1a transgenic mice did not only show an enhanced motor learning, but also exhibit a higher efficacy for motor training in motor learning. Our results suggested that as a “junior” receptor, NR1a facilitates NMDAR activity as well as motor skill learning.

Keywords Cerebellum · Granule cell · NR1a · Motor learning

Introduction

Motor skill learning is the improvement in speed, accuracy, or consistency of movement with training [1], and is characterized by slow and lifelong development that does not require conscious recall [2–4]. The cerebellum plays a crucial role in this process [5, 6]. Corresponding cerebellar regions are activated during different stages of motor learning. For example, high activation of the motor learning process occurs in the posterior lobes of the cerebellar hemispheres [7, 8]. When individuals perform a learned task as fast as they can, the activation increases in the right

dentate nucleus and the right posterior hemispheres [9, 10]. Moreover, the capacity of the cerebellum to memorize motor skills is distinct from its ability to organize or coordinate motor activities [4, 11].

Cerebellar granule cells are the most numerous neuron types in the vertebrate brain [12]. They receive sensorimotor information via mossy fibers and then projection to Purkinje cells [13–15]. Many forms of motor learning substrates depend on this projection [16–19]. Moreover, injection of drugs inducing cerebellar granule cell apoptosis results in impaired motor learning in mice [20]. The importance of granule cell in motor learning has been confirmed by these studies. However, the mechanism of granule cell involvement in motor regulation is not fully understood.

Accumulating evidences indicate that N-methyl-D-aspartate receptor (NMDAR) complex plays a role in motor skill and motor learning [21–24]. Accurate modulation of NMDAR is necessary for effective motor skills, and dysfunction of these receptors may lead to impaired motor skills [25–27]. NMDAR complexes are assembled by a diverse array of 4 distinct function subunits (GluN1, GluN2A-D, and GluN3A-B) [28–30]. GluN1 subunit is necessary for each glutamate receptor heterodimer to anchor GluN2 or GluN3 subunits, comprising a functional ionic channel. GluN1 contains distinct domains, which can bind different proteins to cellular plasma membrane [31] and activate downstream signaling pathways [32].

✉ Mingxi Tang
mxtang69@163.com

✉ Yuan Chen
cheny33@mail.sysu.edu.cn

✉ Yaping Tang
yptang12@126.com

¹ Neurobiology Research Center, School of Medicine, Shenzhen Campus of Sun Yat-Sen University, Shenzhen 518107, China

² Guangzhou Women and Children’s Medical Center, Guangzhou Institute of Pediatrics, Guangzhou Medical University, Guangzhou 510623, China

³ Department of Pathology, Affiliated Hospital of Southwest Medical University, Luzhou 646000, Sichuan, China

Our previous work on mice hippocampus demonstrated that recombinant NMDAR with NR2b overexpression enhanced synaptic plasticity as well as hippocampal-dependent learning [33]. Additionally, recombinant NMDAR with NR2b overexpression in cerebellar granule cell-specific mice enhanced age-dependent and motor learning-specific function [34]. Therefore, it is important to determine whether other different recombinant NMDARs alter cerebellar learning.

Materials and Methods

Immunofluorescence

Mice were fully anesthetized and transcardially perfused with 0.9% saline followed by 4% paraformaldehyde (PFA) in phosphate buffer. Brains were fixed overnight in 4% PFA. Brain sections were initially pre-incubated in phosphate buffer with 3% Triton X-100 and 5% bovine serum albumin. Then, sections were incubated in c-fos (Abcam, 1:500) antibody overnight at 4 °C and incubated in secondary antibody (Abcam, 1:1000) for 2 h at room temperature. Finally, all sections were sealed with antifade mounting medium with DAPI (Sigma-Aldrich).

Laser Microdissection (LMD)

The brain was sequentially sliced into 12 µm sections. Sections were washed twice in 80% ethanol to remove the OCT and stained in cresyl violet (MedChemExpress) solution. Then sections were immersed in 80%, 95%, 100% ethanol and xylene respectively and kept no RNase contamination during all operations. Sections were microdissected using the LMD6500 system (Leica microsystems). Equal amounts of enriched granule cells were lasered in each session. Samples were collected in lysis solution and stored at –80 °C.

Quantitative Real-Time Reverse Transcriptase-PCR

Total RNA extraction was performed using TRIzol reagent (Invitrogen). RNA concentration and quality were measured using a spectrophotometer, and only samples with 260/280 and 260/230 ratios > 1.8 were accepted. cDNA was synthesized starting from 1 µg of the extracted RNA using cDNA Synthesis Kit for RT-qPCR (Takara), following the manufacturer's indications. The resulting product was diluted 1:10, and 1 µL was used as the template for RT-qPCR. qPCR analysis was completed using SYBR Green Mix (Takara) on a CFX96 thermal cycler (BioRad). The primers were as follows: NR1a (forward cgtgagtcgaagcagagaa, reverse tcgtcctcgcttcagagaa); NR1b (forward agcgtgagtcgaagagtaa,

reverse gtcgtcctcgcttcagagaa); c-fos (forward atggtgaagaccgtgtagc, reverse tcagtcctcctcctccgattc).

In Situ Hybridization

We used in situ hybridization with a ³⁵S-labeled oligo probe that could detect the NR1a and NR1b expression pattern. The procedures were described in our previous publication [33]. The probe sequences were referenced from publications [35, 36].

Generation of Cerebellar Granule Cell-Specific NR1a Transgenic Mice

The procedures were similar to our previous publication [34]. GABA-a6-tTA construct consisted of a cerebellar granule cell-specific promoter GABA-a6, an IRES element, tTA, and SV-40 poly-A signal. The tetO-NR1a construct consisted of the tetO mini promoter, the artificial intron, mouse NR1a cDNA, and the SV-40 poly-A. The transgenic cassettes were released by enzyme and purified away from plasmid sequence. The transgenic founders were produced by pronuclear injection of the linearized DNA into C57B/6 inbred zygotes as described. The inbred founders were crossed into C57B/6 to produce F1 generation. The F2 offsprings derived from intercross between GABA-a6-tTA and tetO-NR1a transgenic mice were used for various analyses. The genotypes after the F1 generation were determined by PCR analysis of tail DNA with primers respectively for tTA transgene and NR1a (SV-40) transgene.

Western Blot

Total proteins were extracted using RIPA lysis buffer (Beyotime) and quantified using Pierce BCA Protein Assay Kit (Thermo Fisher). Proteins were separated by SDS-PAGE and transferred onto PVDF membrane. The membrane was blocked in defatted milk powder and incubated at 4 °C overnight in NR1 primary antibody (Cell Signaling Technology, 1:1000). Membranes were washed in PBST 5 min for 3 times and then incubated in secondary antibody (Bioss, 1:5000) for 1 h at room temperature. ECL chromogenic substrate (Millipore) was added for development and was imaged using a gel imaging system.

Quantitative Autoradiography

[³H] MK-801 binding was performed as previously described [37, 38]. Briefly, cerebellums were homogenized and centrifuged. The pellets were suspended and incubated with EDTA-Tris solution after washing with ultra-pure water. Protein concentration was determined by the BCA protein kit. Finally, proteins were incubated with equal amount of [³H] MK-801

assay buffer. 10 μm thick brain sections were pre-incubated in Tris-HCl buffer containing CaCl_2 for 10 min at 4 $^\circ\text{C}$ and then incubated in $[^3\text{H}]\text{MK 801}$ buffer for 60 min at room temperature. Then, sections were rinsed with water and glutaraldehyde. The dried sections were exposed to Hyperfilm. After exposure, the films were developed, fixed, and dried.

Motor Learning in Rotarod Task and MK-801 Injection

3-month-old mice was used to test cell activation after fixed-speed rotarod training (35 rpm, once a day for 3 consecutive days). The rotarod trials were performed at 15 min after MK-801 (2 mg/kg, Sigma-Aldrich) intraperitoneal injection in another group which finished fixed-speed training for consecutive 3 days.

Fixed-speed training was performed in 3-week-old mice (15 rpm) and 3-month-old mice (35 rpm) for consecutive 3 days to detect the expression of NR1a/b in mice of different ages. Slower rotarod speed was used for weaning 3-week-old mice to ensure that they could complete the test. Cerebellum tissues were retained at different time points after trials on the 4th day.

For transgenic mice, 3 fixed-speed rotarod trials (35 rpm) were used per day for 3 consecutive days. The test trials are performed on the 4th day, and the average time on the 4th day was calculated. The self-training and accelerated-speed rotarod procedures for transgenic mice were similar to our previous publication [34].

Results

Cerebellar Cortex Granule Cells Are Activated Rapidly by Rotarod Training

The vertebrate cerebellum is involved in multiple aspects of motor coordination [39], and the first stage of refining motor output occurs in the granule cell layer [40]. *c-fos* gene encodes the transcription factor that regulates the activity of effector genes at the early stage after stimulus [41]. Therefore, *c-fos* is used to label activated granule cells when verifying the association between motor activity and cerebellar granule cells [42]. In our study, *c-fos* mRNA expression was detected at 1 h, 2 h, 3 h, and 4 h separately after rotarod training. The result showed that *c-fos* mRNA was significantly upregulated and reached a peak at 1 h after training and then began to decline and remained at NC group level 4 h later (Fig. 1A). *c-fos* protein expression trend was consistent with mRNA expression level which reached the peak at 1 h and then gradually decreased to NC level (Fig. 1B, C).

Cerebellar Cortex Granule Cells Are Activated Through NMDAR

Cerebellar granule cells receive glutamatergic projections from mossy fibers, and activation of NMDAR plays an important role in the physiological function of these synapses [43]. Moreover, NMDAR has been reported to involve in *c-fos* activation in some animal models. [44,

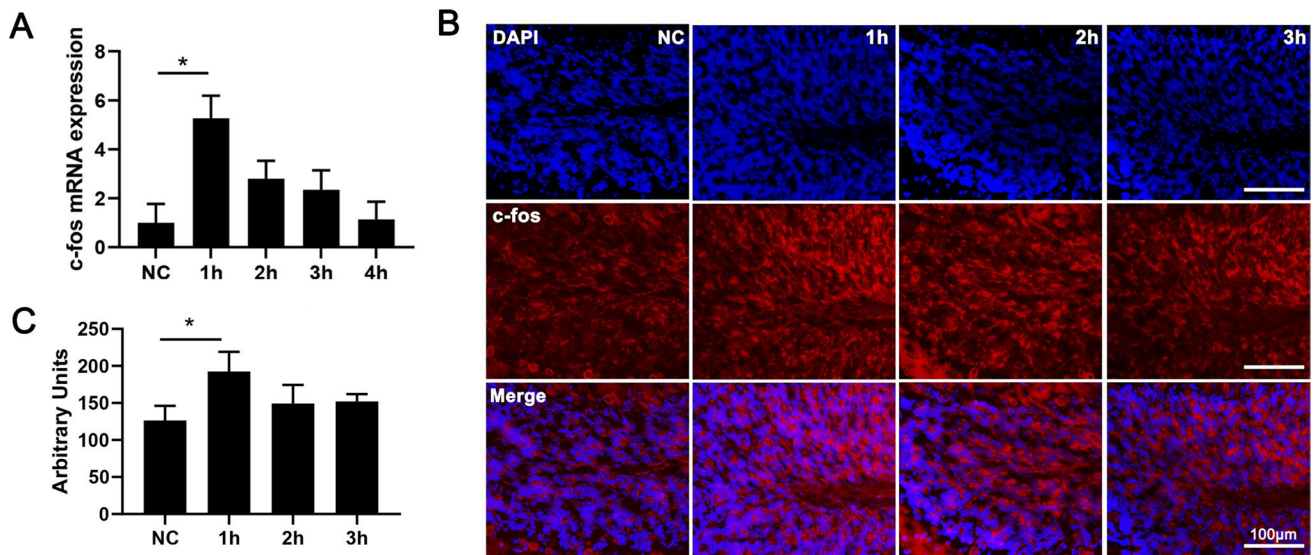


Fig. 1 Activated cerebellar granule cells in rotarod-trained mice. **A** Expression of *c-fos* mRNA in mice cerebellum at negative control (NC) 1h/2h/3h/4h ($n=3$) after rotarod training. **B** *c-fos* immunofluorescence of negative control mice (untrained mice) and rotarod-

trained mice in cerebellum cortex. Scale bar: 100 μm . **C** Quantitative statistics of fluorescence density of *c-fos*. NC, /1h /2h /3h ($n=6$). Data are expressed as mean \pm SEM, * $P < 0.05$

45]. To verify whether rotarod training-induced c-fos activation was associated with NMDAR, MK-801 (an NMDA antagonist) was injected before rotarod training. c-fos mRNA was significantly upregulated 4.2 times after training to NC, which could be inhibited by MK-801 (Fig. 2A). c-fos protein expression change was consistent with mRNA level (Fig. 2B, C).

In conclusion, rotarod training can rapidly activate cerebellar granule cells through NMDAR.

The N1 cassette (exon 5) determines NMDAR properties [46], and high granule cellular activity changes the NR1a/NR1b ratio in vitro [47]. Here, we examined the expression of NR1a (without the N1 cassette) and NR1b (with N1 the cassette) (Fig. 3B) in NC and trained mice. Activated cerebellar granule cells were collected precisely through laser capture microdissection by using fast and efficient cresyl violet staining (Fig. 3A). We cut cerebellar lobe IV/V for RNA extraction according to research which showed that lobe IV/V is involved in the regulation of motor coordination in mice [48].

The result indicated that NR1a and NR1b mRNA presented opposite trend during the development of mice. NR1a mRNA is predominated in young mice and replaced by NR1b in adulthood. In addition, the expression of NR1a mRNA was substantially upregulated in the trained group compared with the NC group (Fig. 3C). Study has shown that young mice have better performance in motor skills and motor learning [49], which is consistent with NR1a/NR1b pattern change. These indicate that NR1 α may be involved in the activation of cerebellar granule cells by rotarod training.

Generation of Cerebellar Granule Cell-Specific NR1a Transgenic Mice

According to our previous study, we generated inducible cerebellar granule cell-specific NR1a transgenic mice. Firstly, we generated two single transgenic mouse strains (Fig. 4A), with GABA-a6 as the granule cell-specific promoter used to drive tTA. We confirmed the specificity and efficacy of this promoter in our previous work [34]. Secondly, GABA-a6-tTA/tetO-NR1a double-transgenic mice were produced.

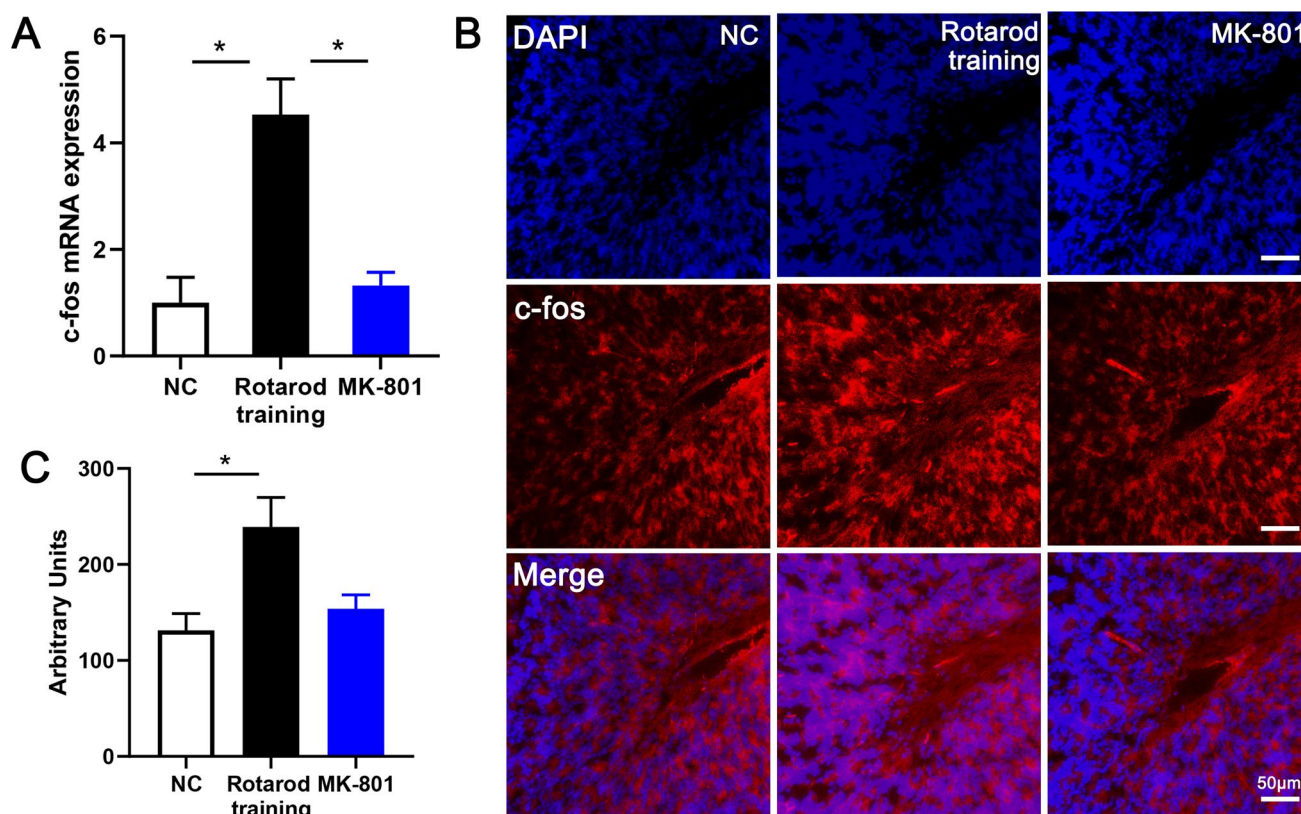
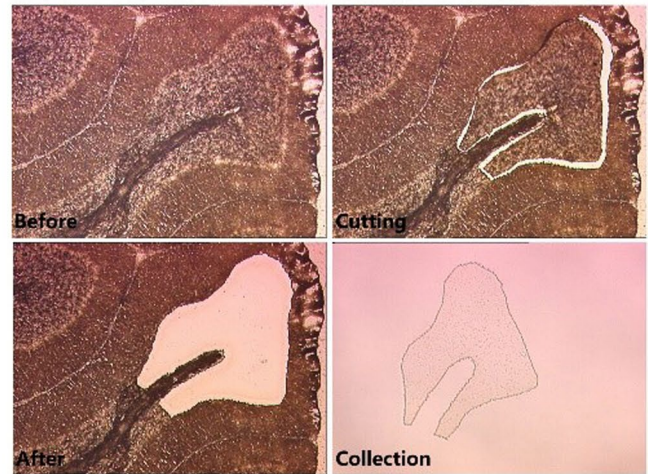
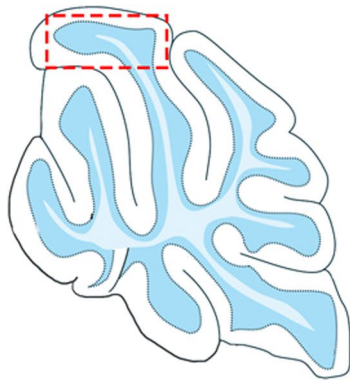


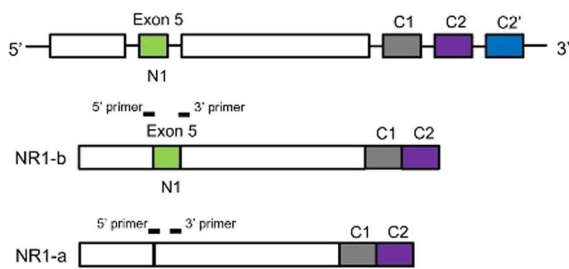
Fig. 2 NMDAR antagonist inhibits activation of granule cell. **A** Expression of c-fos mRNA in mice cerebellum of three groups: NC, negative control without training; rotarod training, collecting cerebellum tissue at 1 h after training; MK-801, injecting MK-801 before training and collecting cerebellum tissue at 1 h after training. **B** c-fos

immunofluorescence of NC/rotarod training/MK-801 mice in cerebellum cortex. Scale bar: 50 μm. **C** Quantitative statistics of fluorescence density of **B**. NC ($n=5$)/rotarod training ($n=5$)/MK-801 ($n=5$). Data are expressed as mean \pm SEM, $*P < 0.05$

A



B



C

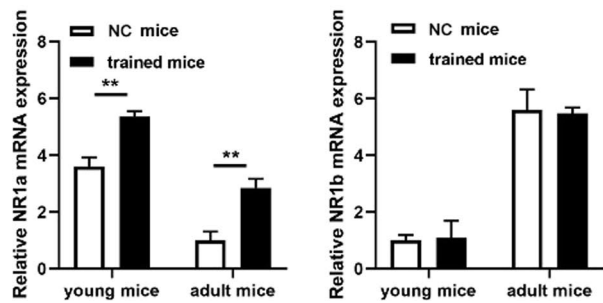


Fig. 3 NR1a/b mRNA expression in rotarod-trained mice. **A** Laser capture microdissection diagram of cerebellar cortex granule cell area. **B** Top: partial diagram of the NR1 gene. Exon 5 encodes the N1 terminal domain of the NR1. Middle: schematic diagram of the NR1b (with exon5) splice variants. Bottom: schematic diagram of the NR1a (without exon5) splice variants. The position of primers is shown

with bold lines on top of each splice variant. **C** mRNA expression of NR1a/b in the cerebellum. NC young mice ($n=4$)/NC adult mice ($n=4$)/trained young mice ($n=4$)/trained adult mice ($n=4$). Data are expressed as mean \pm SEM, ** $P < 0.001$; young mice, 3 weeks; adult mice, 3 months

Since there is no antibody that can accurately distinguish between NR1a and NR1b proteins, Western blotting was used to confirm the overexpression of the NR1 protein in the cerebellum of transgenic mice (Fig. 4B). In situ hybridization showed that NR1a was observed in cerebellar cortex of Tg mice, but not in Wt mice; same expression of NR1b is observed in Tg and Wt mice (Fig. 4C). This result confirmed that NR1a is overexpressed in granule cells of transgenic mice specifically. This mouse model was used in the following experiments to verify the effect of NR1a overexpressed recombinant NMDAR on motor learning.

Elevated [³H]-MK801 Binding Activity in Transgenic Cerebellum

MK801 is an NMDAR noncompetitive antagonist [50] that specifically binds to the channel blocking site of the NMDAR [51]. Based on this binding feature, [³H]-MK801 was used to measure the amount and activity of NMDAR.

Incubation of the cerebellar homogenates with [³H]-MK801 showed that binding to [³H]-MK801 in transgenic mice was substantially higher than that in wild-type mice (Fig. 5A). After incubation of the brain slices, the binding of NMDAR reached saturation when the concentration of [³H]-MK801 reached 200 nM in the wild-type group. However, the binding in transgenic mice increased persistently with increasing [³H]-MK801 concentration (Fig. 5B). These results indicated that the amount and activity of NMDAR are significantly elevated in transgenic cerebellum. These data further verified the success of these transgenic mice and ensured the reliability of the results of subsequent behavioral tests.

Enhanced Motor Controlling Ability and Motor Learning in Transgenic Mice with Overexpressed NR1a

Transgenic mice spent more time on the rod than wild-type mice in the fixed-speed rotarod test (Fig. 6A). This

Fig. 4 Inducible cerebellar granule cell-specific NR1a transgenic mice. **A** Expression vectors for GABA- α 6-tTA (upper panel) and tetO-NR1a (lower panel). pA, poly-A signal; int, artificial intron. **B** NR1 protein expression in transgene mice cerebellum. **C** Distribution of the NR1a/b in transgene mice cerebellum

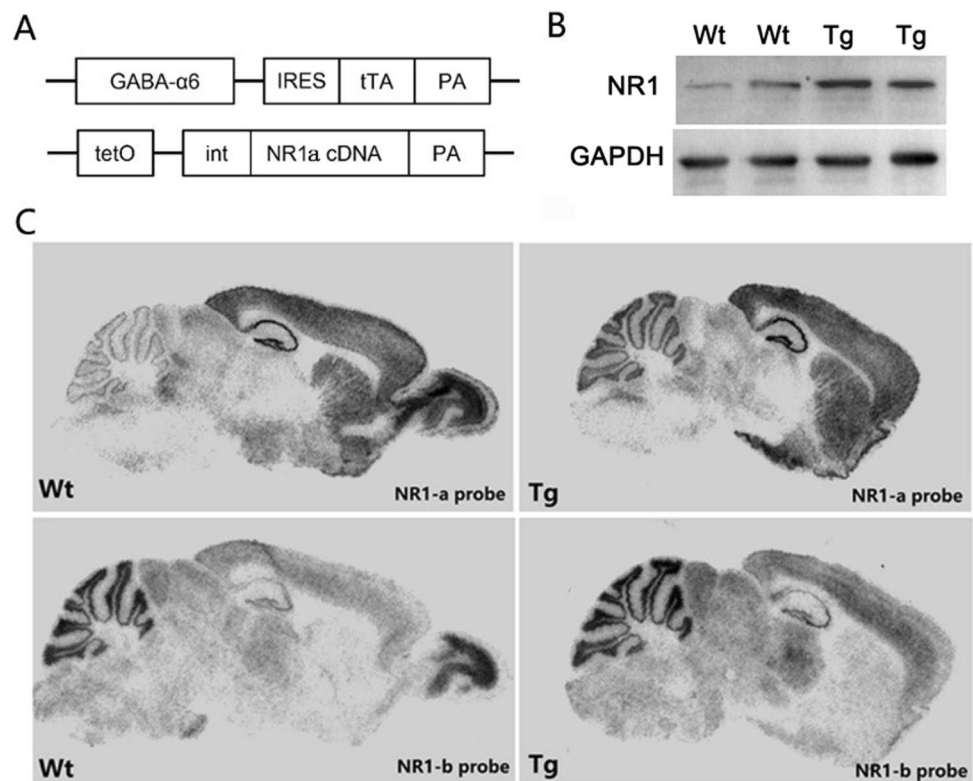
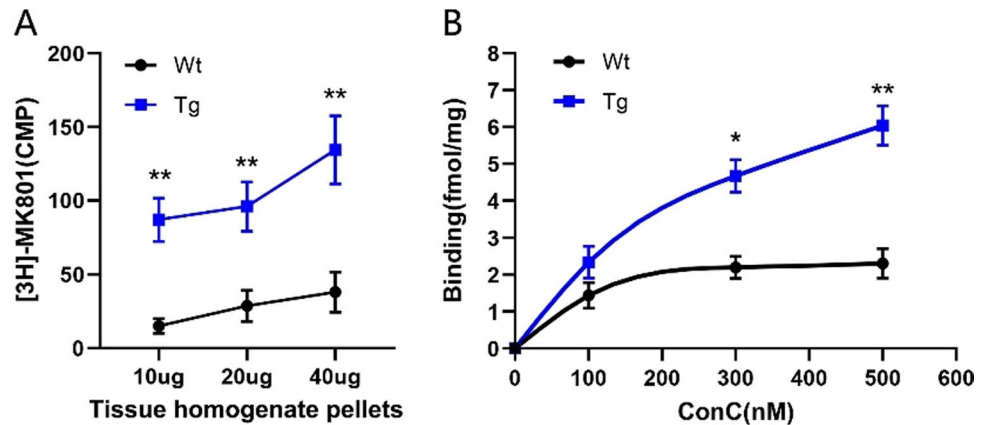


Fig. 5 Binding of [3 H]-MK801 to NMDAR in transgenic mice. **A** Tissue dilution curves of [3 H]-MK801 binding to NMDAR in Wt and Tg mice cerebellar homogenate. **B** Binding curves of [3 H]-MK801 binding to NMDAR in Wt and Tg mice cerebellar slices. Wt ($n=4$) and Tg ($n=4$). The higher binding ratio in Tg cerebellum is verified by two different assayed methods. Data are expressed as mean \pm SEM; ** $P < 0.01$, * $P < 0.05$



data suggests that the involvement of cerebellar granule cells in the regulation of motor skill control occurs through NR1a. Then, we used an accelerated rotarod training test to examine whether motor skill learning changed in transgenic mice. The time spent on the rod gradually increases each day in both Wt and Tg groups without self-training. However, there was no significant difference between the two groups at each day. In contrast, the time spent on the rod by the transgenic mice was considerably higher than that spent by wild-type mice after self-training (Fig. 6B) per test day. This indicates that NR1a might be responsible for the enhancement of motor skill learning.

Discussion

We demonstrated that transgenic mice with overexpression of NR1a in the cerebellar granule cells undergoing rotarod training could enhance motor learning. Granule cells are the major dopaminergic excitatory cells in the cerebellar cortex and originate in the upper rhombic lip [52, 53]. Excitatory granule cells make up the cerebellar granular layer. Interaction of these cells with inhibitory Golgi cells can help determine network responses to external stimuli [54]. Hence, a functional change in granule

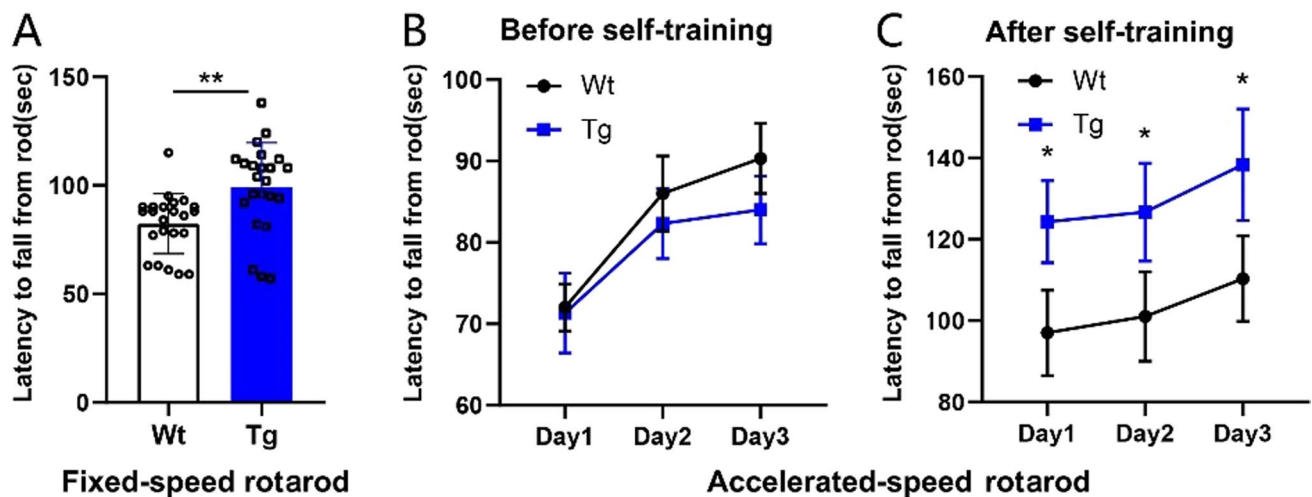


Fig. 6 Effects of the NR1a transgene on motor learning. **A** Latency to fall of mice in a fixed-speed rotarod. Wt ($n=23$)/Tg ($n=23$). **B** Motor learning in an accelerated-speed rotarod test. Two different sets of

mice were respectively used for fixed- and accelerated-speed rotarod tests. Data are expressed as mean \pm SEM; ** $P < 0.01$, * $P < 0.05$

cells may directly affect information integration within the cerebellar computational network and subsequently affect motor learning. To our knowledge, this is the first study to demonstrate that the NR1a subunit of NMDAR in granule cells constitutes a molecular basis for the involvement of the cerebellum to facilitate the development of better motor learning. Meanwhile, mouse models with cortex CA1 hippocampus/striatum-specific removal of the NR1 subunit have provided considerable information on the role of somatosensory pattern development and synaptic plasticity in spatial memory [55–57]. These results indicate that motor skill learning is coordinated by multiple brain regions. Therefore, our cerebellum granule cell-specific NR1a overexpression mice could serve as a valuable tool for studying other cerebellar functions.

This is the first study to confirm the importance of the NR1a subunit in motor skill learning related to rotarod performance. Without the intervention of environmental factors, recombinant NMDAR-overexpressing NR1a transgenic mice could obtain elevated motor skills, whereas our previous NR2b recombinant mice did not show such a change. This result suggests that NR1a plays a critical role in the development of motor skills. NR1 is often considered indispensable for functional NMDAR assemblies [35], and alternative splicing of NR1 subunit mRNA has substantial effects on the NMDA receptor properties [58]. In addition, exon 5 of NR1 is an N-terminal splicing cassette whose expression is strongly regulated throughout development. The NR1 subunit transitions from the NR1a form (without exon 5) in the embryonic stage to the NR1b (with exon 5) form in adulthood [46, 59]. This age-dependent expression pattern may be induced by functional differences and neuron activity. For example, Mary et al. demonstrated that high levels

of granule cell activity with special culture systems inhibit the expression of NR1b in vitro [47]. Moreover, NR1a and NR1b show largely varying affinity to agonists, potentiation to zinc and magnesium ions, current amplitudes, sensitivity to proton inhibition, and response to polyamines and protein kinase C [36, 46, 60–63]. These differences may be the molecular basis for functional diversity.

Long-term synaptic plasticity serves as a base for learning and memory. Fast motor skill learning requires acceleration of rotarod tasks and modulating synaptic efficacy through long-term potentiation and long-term depression in rodents [64, 65]. Martijn et al. demonstrated that NMDARs are necessary for LTP and LTD induction of parallel fiber-Purkinje cell (PF-PC) synapses for cerebellar motor learning by specifically deleting NR1 [16]. In our previous study, we developed recombinant NMDAR NR2b transgenic mice and demonstrated that granule cells facilitate the development of synaptic use-dependent plasticity [34]. However, the change and potential implications of synaptic plasticity in NR1a transgenic mice warrant further study.

Conclusion

Our results validated that expression of NR1a in the cerebellar granule cells may constitute a molecular basis for NMDAR activity and motor skill learning.

Author Contribution T.T. and Ly.J. designed the study, wrote the main manuscript, prepared Figures, contributed equally to this work, and are to be considered co-first authors. Zx.H. and Xj.D. prepared Figures. Mx.T. provided funding. Y.C. and Yp.T. provided academic guidance and revision. All authors reviewed the manuscript.

Funding The work described was supported by the Key Technologies R & D Program of Sichuan Province of China (14ZC0054).

Data Availability The datasets in this study are available from the corresponding author on request.

Declarations

Competing interests The authors declare no competing interests.

Ethical Approval All procedures performed in this study involving mouse were performed according to the Institutes Animal Care and Use Committee of Sun Yat-Sen University and Guangzhou Medical University.

Conflict of Interest The authors declare no competing interests.

Open Access This article is licensed under a Creative Commons Attribution 4.0 International License, which permits use, sharing, adaptation, distribution and reproduction in any medium or format, as long as you give appropriate credit to the original author(s) and the source, provide a link to the Creative Commons licence, and indicate if changes were made. The images or other third party material in this article are included in the article's Creative Commons licence, unless indicated otherwise in a credit line to the material. If material is not included in the article's Creative Commons licence and your intended use is not permitted by statutory regulation or exceeds the permitted use, you will need to obtain permission directly from the copyright holder. To view a copy of this licence, visit <http://creativecommons.org/licenses/by/4.0/>.

References

- Papale AE, Hooks BM. Circuit changes in motor cortex during motor skill learning. *Neuroscience*. 2018;368:283–97.
- Eichenbaum H. A cortical-hippocampal system for declarative memory. *Nat Rev Neurosci*. 2000;1(1):41–50.
- Tulving E, Markowitsch HJ. Episodic and declarative memory: role of the hippocampus. *Hippocampus*. 1998;8(3):198–204.
- Llinas R, Welsh JP. On the cerebellum and motor learning. *Curr Opin Neurobiol*. 1993;3(6):958–65.
- Ito M. Cerebellar long-term depression: characterization, signal transduction, and functional roles. *Physiol Rev*. 2001;81(3):1143–95.
- Shidara M, et al. Inverse-dynamics model eye movement control by Purkinje cells in the cerebellum. *Nature*. 1993;365(6441):50–2.
- Deiber MP, et al. Frontal and parietal networks for conditional motor learning: a positron emission tomography study. *J Neurophysiol*. 1997;78(2):977–91.
- Jenkins IH, et al. Motor sequence learning: a study with positron emission tomography. *J Neurosci*. 1994;14(6):3775–90.
- van Mier H, et al. Changes in brain activity during motor learning measured with PET: effects of hand of performance and practice. *J Neurophysiol*. 1998;80(4):2177–99.
- Halsband U, Lange RK. Motor learning in man: a review of functional and clinical studies. *J Physiol Paris*. 2006;99(4–6):414–24.
- Boyden ES, et al. Selective engagement of plasticity mechanisms for motor memory storage. *Neuron*. 2006;51(6):823–34.
- Narayanan S, Thirumalai V. Contributions of the cerebellum for predictive and instructional control of movement. *Curr Opin Physiol*. 2019;8:146–51.
- Lanore F, et al. Cerebellar granule cell axons support high-dimensional representations. *Nat Neurosci*. 2021;24(8):1142–50.
- Proville RD, et al. Cerebellum involvement in cortical sensorimotor circuits for the control of voluntary movements. *Nat Neurosci*. 2014;17(9):1233–9.
- Arenz A, et al. The contribution of single synapses to sensory representation in vivo. *Science*. 2008;321(5891):977–80.
- Schonewille M, et al. NMDARs in granule cells contribute to parallel fiber-Purkinje cell synaptic plasticity and motor learning. *Proc Natl Acad Sci U S A*. 2021;118(37):e2102635118.
- ten Brinke MM, et al. Evolving models of pavlovian conditioning: cerebellar cortical dynamics in awake behaving mice. *Cell Rep*. 2015;13(9):1977–88.
- Wada N, Funabiki K, Nakanishi S. Role of granule-cell transmission in memory trace of cerebellum-dependent optokinetic motor learning. *Proc Natl Acad Sci U S A*. 2014;111(14):5373–8.
- Gao Z, van Beugen BJ, De Zeeuw CI. Distributed synergistic plasticity and cerebellar learning. *Nat Rev Neurosci*. 2012;13(9):619–35.
- Shimizu H, et al. Massive cell death of cerebellar granule neurons accompanied with caspase-3-like protease activation and subsequent motor discoordination after intracerebroventricular injection of vincristine in mice. *Neuroscience*. 2002;115(1):55–65.
- Galliano E, et al. Impact of NMDA receptor overexpression on cerebellar Purkinje cell activity and motor learning. *eNeuro*. 2018;5(1):ENEURO.0270-17.2018.
- Kono M, et al. Interneuronal NMDA receptors regulate long-term depression and motor learning in the cerebellum. *J Physiol*. 2019;597(3):903–20.
- Hasan MT, et al. Role of motor cortex NMDA receptors in learning-dependent synaptic plasticity of behaving mice. *Nat Commun*. 2013;4:2258.
- Duan Y, et al. Striatal GluN2B involved in motor skill learning and stimulus-response learning. *Neuropharmacology*. 2018;135:73–85.
- Umemori H, et al. Impairment of N-methyl-D-aspartate receptor-controlled motor activity in LYN-deficient mice. *Neuroscience*. 2003;118(3):709–13.
- Sanchez-Perez A, et al. Modulation of NMDA receptors in the cerebellum. II. Signaling pathways and physiological modulators regulating NMDA receptor function. *Cerebellum*. 2005;4(3):162–70.
- Kadotani H, et al. Motor discoordination results from combined gene disruption of the NMDA receptor NR2A and NR2C subunits, but not from single disruption of the NR2A or NR2C subunit. *J Neurosci*. 1996;16(24):7859–67.
- Feyissa AM, et al. Reduced levels of NR2A and NR2B subunits of NMDA receptor and PSD-95 in the prefrontal cortex in major depression. *Prog Neuropsychopharmacol Biol Psychiatry*. 2009;33(1):70–5.
- Cull-Candy SG, Leszkiewicz DN. Role of distinct NMDA receptor subtypes at central synapses. *Sci STKE*. 2004;2004(255):re16.
- Hansen KB, et al. Structure, function, and allosteric modulation of NMDA receptors. *J Gen Physiol*. 2018;150(8):1081–105.
- Zhou L, Duan J. The C-terminus of NMDAR GluN1-1a subunit translocates to nucleus and regulates synaptic function. *Front Cell Neurosci*. 2018;12:334.
- Gu X, Zhou L, Lu W. An NMDA receptor-dependent mechanism underlies inhibitory synapse development. *Cell Rep*. 2016;14(3):471–8.
- Tang YP, et al. Genetic enhancement of learning and memory in mice. *Nature*. 1999;401(6748):63–9.
- Jiao J, et al. Expression of NR2B in cerebellar granule cells specifically facilitates effect of motor training on motor learning. *PLoS One*. 2008;3(2): e1684.

35. Laurie DJ, et al. The distribution of splice variants of the NMDAR1 subunit mRNA in adult rat brain. *Brain Res Mol Brain Res.* 1995;32(1):94–108.
36. Laurie DJ, Seeburg PH. Regional and developmental heterogeneity in splicing of the rat brain NMDAR1 mRNA. *J Neurosci.* 1994;14(5 Pt 2):3180–94.
37. Metaxas A, et al. Binding characterization of N-(2-chloro-5-thiomethylphenyl)-N'-(3-[(3 H)3 methoxy phenyl]-N'-methylguanidine ([3 H]GMOM), a non-competitive N-methyl-D-aspartate (NMDA) receptor antagonist. *Pharmacol Res Perspect.* 2019;7(1):e00458.
38. Bootsma JM, et al. Neural correlates of motor skill learning are dependent on both age and task difficulty. *Front Aging Neurosci.* 2021;13:643132.
39. Ito M. Cerebellar circuitry as a neuronal machine. *Prog Neurobiol.* 2006;78(3–5):272–303.
40. Fore TR, et al. Acetylcholine modulates cerebellar granule cell spiking by regulating the balance of synaptic excitation and inhibition. *J Neurosci.* 2020;40(14):2882–94.
41. Barros VN, et al. The pattern of c-Fos expression and its refractory period in the brain of rats and monkeys. *Front Cell Neurosci.* 2015;9:72.
42. Miyashita T, et al. Long-term memory engram cells are established by c-Fos/CREB Transcriptional cycling. *Cell Rep.* 2018;25(10):2716–2728e3.
43. Llansola M, et al. Modulation of NMDA receptors in the cerebellum. 1. Properties of the NMDA receptor that modulate its function. *Cerebellum.* 2005;4(3):154–61.
44. Toth Z, et al. Non-competitive antagonists of NMDA and AMPA receptors decrease seizure-induced c-fos protein expression in the cerebellum and protect against seizure symptoms in adult rats. *Acta Histochem.* 2018;120(3):236–41.
45. Yamada M, et al. Induction of c-Fos immunoreactivity in the amygdala of mice expressing anxiety-like behavior after local perfusion of veratrine in the prelimbic medial prefrontal cortex. *J Neural Transm (Vienna).* 2015;122(8):1203–7.
46. Prybylowski K, et al. Increased exon 5 expression alters extrasynaptic NMDA receptors in cerebellar neurons. *J Neurochem.* 2000;75(3):1140–6.
47. Quintero GC, Erzurumlu RS, Vaccarino AL. Evaluation of morphine analgesia and motor coordination in mice following cortex-specific knockout of the N-methyl-D-aspartate NR1-subunit. *Neurosci Lett.* 2008;437(1):55–8.
48. Liu XX, et al. BOD1 regulates the cerebellar IV/V lobe-fastigial nucleus circuit associated with motor coordination. *Signal Transduct Target Ther.* 2022;7(1):170.
49. Shoji H, Miyakawa T. Age-related behavioral changes from young to old age in male mice of a C57BL/6J strain maintained under a genetic stability program. *Neuropsychopharmacol Rep.* 2019;39(2):100–18.
50. Conto MB, de Carvalho JG, Venditti MA. Rats with different thresholds to clonic convulsions induced by DMCM differ in the binding of [3H]-MK-801 and [3H]-ouabain in the membranes of brain regions. *Neurochem Res.* 2012;37(7):1442–9.
51. Jang C, et al. Autoradiographic study of NMDA-displaceable [3H]glutamate and [3H]MK-801 binding during butorphanol withdrawal in the rat brain. *Brain Res.* 1999;845(2):236–41.
52. Fleming JT, et al. The Purkinje neuron acts as a central regulator of spatially and functionally distinct cerebellar precursors. *Dev Cell.* 2013;27(3):278–92.
53. Sillitoe RV, Joyner AL. Morphology, molecular codes, and circuitry produce the three-dimensional complexity of the cerebellum. *Annu Rev Cell Dev Biol.* 2007;23:549–77.
54. Palacios ER, Houghton C, Chadderton P. Accounting for uncertainty: inhibition for neural inference in the cerebellum. *Proc Biol Sci.* 1947;2021(288):20210276.
55. Iwasato T, et al. Cortex-restricted disruption of NMDAR1 impairs neuronal patterns in the barrel cortex. *Nature.* 2000;406(6797):726–31.
56. Dang MT, et al. Disrupted motor learning and long-term synaptic plasticity in mice lacking NMDAR1 in the striatum. *Proc Natl Acad Sci U S A.* 2006;103(41):15254–9.
57. Tsien JZ, Huerta PT, Tonegawa S. The essential role of hippocampal CA1 NMDA receptor-dependent synaptic plasticity in spatial memory. *Cell.* 1996;87(7):1327–38.
58. Dracheva S, et al. N-methyl-D-aspartic acid receptor expression in the dorsolateral prefrontal cortex of elderly patients with schizophrenia. *Am J Psychiatry.* 2001;158(9):1400–10.
59. Zheng X, et al. Mutagenesis rescues spermine and Zn²⁺ potentiation of recombinant NMDA receptors. *Neuron.* 1994;12(4):811–8.
60. Tingley WG, et al. Characterization of protein kinase A and protein kinase C phosphorylation of the N-methyl-D-aspartate receptor NR1 subunit using phosphorylation site-specific antibodies. *J Biol Chem.* 1997;272(8):5157–66.
61. Traynelis SF, Hartley M, Heinemann SF. Control of proton sensitivity of the NMDA receptor by RNA splicing and polyamines. *Science.* 1995;268(5212):873–6.
62. Durand GM, Bennett MV, Zukin RS. Splice variants of the N-methyl-D-aspartate receptor NR1 identify domains involved in regulation by polyamines and protein kinase C. *Proc Natl Acad Sci U S A.* 1993;90(14):6731–5.
63. Hollmann M, et al. Zinc potentiates agonist-induced currents at certain splice variants of the NMDA receptor. *Neuron.* 1993;10(5):943–54.
64. Rioult-Pedotti MS, Friedman D, Donoghue JP. Learning-induced LTP in neocortex. *Science.* 2000;290(5491):533–6.
65. Rioult-Pedotti MS, et al. Strengthening of horizontal cortical connections following skill learning. *Nat Neurosci.* 1998;1(3):230–4.

Publisher's Note Springer Nature remains neutral with regard to jurisdictional claims in published maps and institutional affiliations.