

Hematocolpos secondary to imperforate hymen

Brian T. Kloss · Nicholas E. Nacca · Richard M. Cantor

Received: 26 January 2010 / Accepted: 10 February 2010 / Published online: 6 May 2010
© Springer-Verlag London Ltd 2010

A previously healthy 12-year-old female was sent to the Emergency Department by her pediatrician for workup of severe suprapubic abdominal pain radiating to her lower back. She reported having waxing and waning pain for 1 month that had awoken her from sleep the previous evening. The patient denied nausea, vomiting, and diarrhea, but reported mild urinary retention. Per history she was premenarchal.

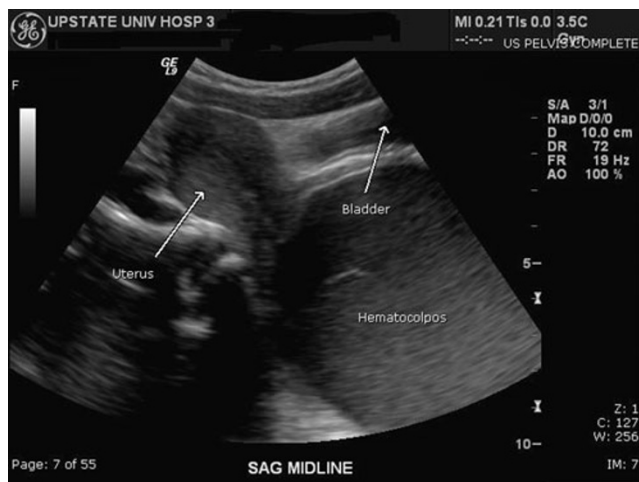


Fig. 1 Sagittal US view

B. T. Kloss (✉) · N. E. Nacca · R. M. Cantor
Department of Emergency Medicine,
State University of New York, Upstate Medical University,
750 East Adams St,
Syracuse, NY 13210, USA
e-mail: klossb@upstate.edu

N. E. Nacca
e-mail: naccan@upstate.edu

R. M. Cantor
e-mail: cantorr@upstate.edu

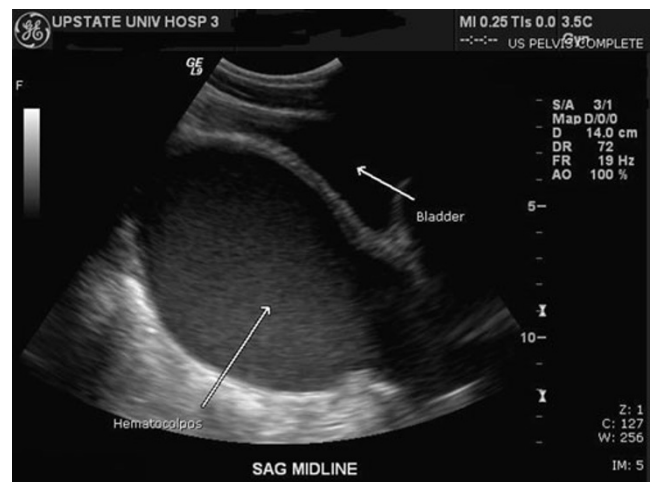


Fig. 2 Sagittal US view

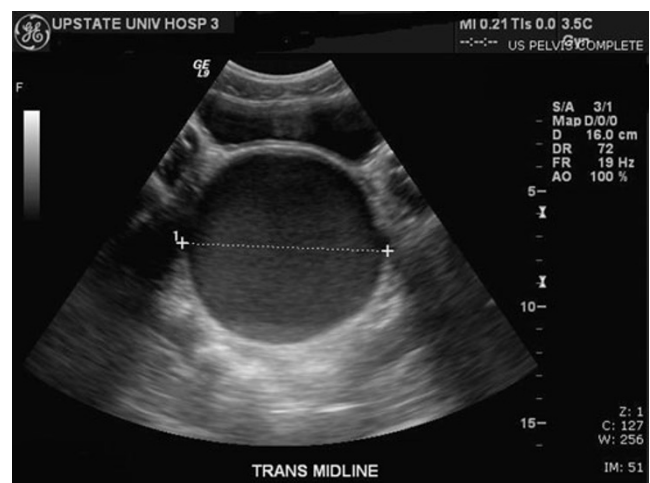


Fig. 3 Transverse US view

Her vital signs were heart rate (HR), 83; blood pressure, 129/85 mmHg; temperature, 36.1 °C. Physical exam revealed a healthy adolescent female with signs of both thelarche and adrenarche. Her abdomen was soft and non-tender, but notable for a palpable pubic mass. All blood and urine laboratory tests, including β -HCG, were normal. Ultrasound examination revealed a 13.7×8.0×8.8-cm complex fluid-filled structure extending inferiorly from the uterus, obscuring visualization of the cervicovaginal junction. A genitourinary exam revealed an imperforate hymen. A diagnosis of hematocolpos secondary to imperforate hymen was made and surgically confirmed.

Imperforate hymen occurs in approximately 1 in 1,000 females [1], and found incidentally on physical exam (43%), it is treatable and does not cause significant morbidity [2]. If not screened for and treated early, patients present at menarche with a history of cyclical pelvic or abdominal pain and urinary retention due to hematocolpos. Physical exam findings may include a palpable abdominal mass and an intact bulging blue hymen [3, 4]. Potential complications of delayed diagnosis include retrograde

menstruation and rarely ruptured hematosalpinx [5]. Diagnosis is supported by history, physical exam, and ultrasound findings, and should prompt immediate consultation with a gynecologist [3] (Figs. 1, 2 and 3).

References

1. Parazzini FF (1990) The frequency of imperforate hymen in Northern Italy. *Int J Epidemiol* 19(3):763, Print
2. Posner JC, Spandorfer PR (2005) Early detection of imperforate hymen prevents morbidity from delays in diagnosis. *Pediatrics* 115(4):1008–1012, Print
3. Basaran M, Usal D, Aydemir C (2009) Hymen sparing surgery for imperforate hymen: case reports and review of literature. *J Pediatr Adolesc Gynecol* 22(4):E61–E64, ScienceDirect. Web. 20 Jan. 2010
4. Dane C, Dane B, Erginbas M, Cetin A (2007) Imperforate hymen—a rare cause of abdominal pain: two cases and review of the literature. *J Pediatr Adolesc Gynecol* 20(4):245–247, ScienceDirect. Web. 20 Jan. 2010
5. Bakos O, Berglund L (1999) Imperforate hymen and ruptured hematosalpinx: a case report with a review of the literature. *J Adolesc Health* 24(3):226–228, ScienceDirect. Web. 20 Jan. 2010