



Correction

Correction to: An Easy-to-Fabricate Cell Stretcher Reveals Density-Dependent Mechanical Regulation of Collective Cell Movements in Epithelia

KEVIN C. HART,^{1,7} JOO YONG SIM,^{2,8} MATTHEW A. HOPCROFT,^{4,5} DANIEL J. COHEN,^{1,9} JIONGYI TAN,^{3,10}
W. JAMES NELSON,¹ and BETH L. PRUITT ^{2,3,5,6}

¹Department of Biology, Stanford University, Stanford, CA 94305, USA; ²Department of Mechanical Engineering, Stanford University, Stanford, CA 94305, USA; ³Department of Biophysics, Stanford University, Stanford, CA 94305, USA; ⁴Red Dog Research, Santa Barbara, CA 93109, USA; ⁵Department of Mechanical Engineering, University of California, 494 UCEN Rd, Santa Barbara, CA, USA; ⁶Biomolecular Science and Engineering Program, University of California, Santa Barbara, Santa Barbara, CA 93106, USA; ⁷IGM Biosciences, Mountain View, CA 94043, USA; ⁸Sookmyung Women's University, Seoul 04310, Republic of Korea; ⁹Department of Mechanical and Aerospace Engineering, Princeton University, Princeton, NJ 08544, USA; and ¹⁰Department of Cellular and Molecular Pharmacology, University of California, San Francisco, San Francisco, CA 94143, USA

(Published online 17 August 2021)

Correction to:

Cellular and Molecular Bioengineering (2021)

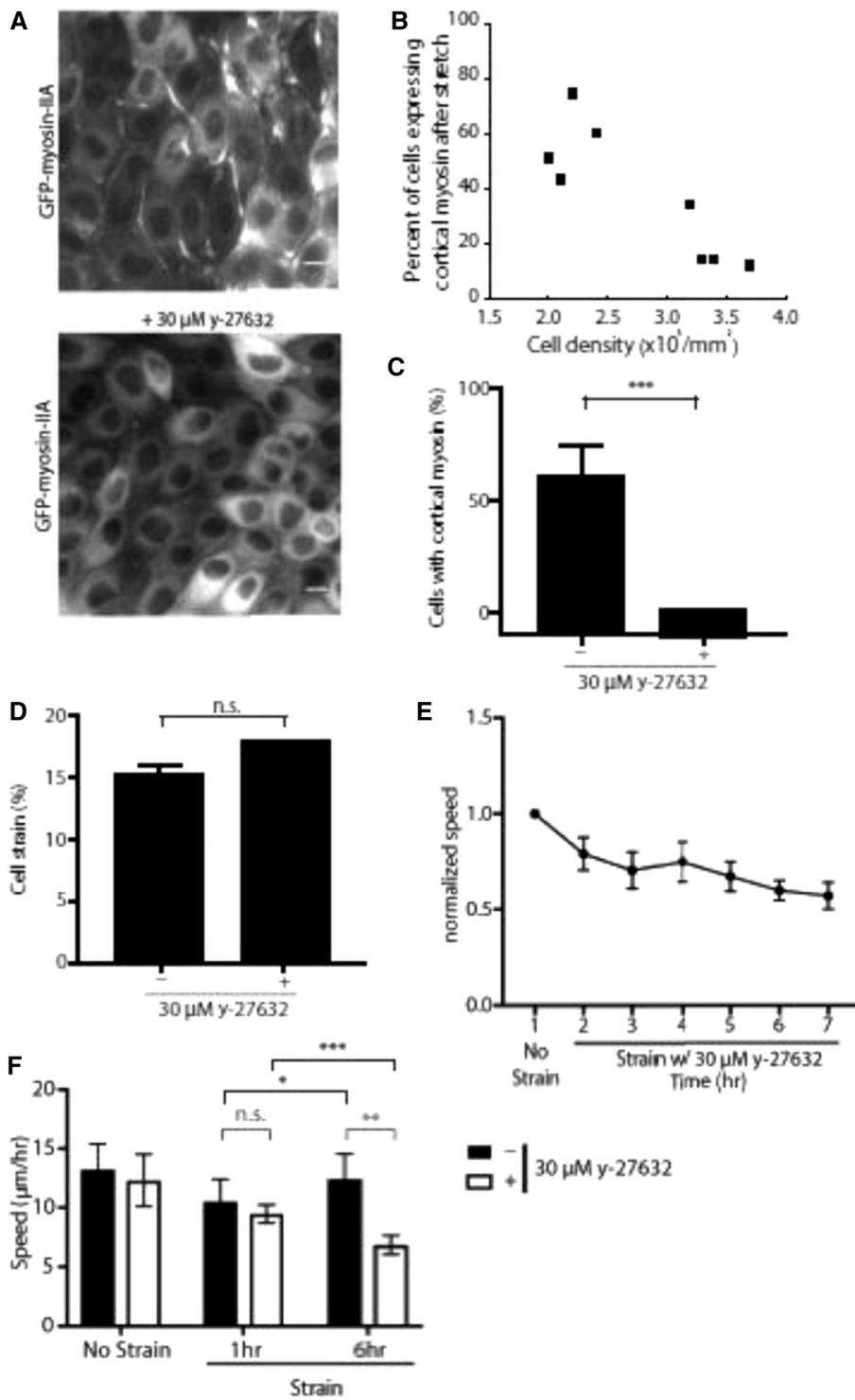
<https://doi.org/10.1007/s12195-021-00689-6>

In this article the wrong figure appeared as Fig. 5F.; the figure should have appeared as shown below. The original article has been corrected.

The original article can be found online at <https://doi.org/10.1007/s12195-021-000689-6>.

Kevin C. Hart and Joo Yong Sim contributed equally to this study.

Address correspondence to Beth L. Pruitt, Department of Mechanical Engineering, Stanford University, Stanford, CA 94305, USA. Electronic mail: blp@ucsb.edu



Publisher's Note Springer Nature remains neutral with regard to jurisdictional claims in published maps and institutional affiliations.