



Correction to: Development and validation of a modified albumin–bilirubin grade and α -fetoprotein score (mALF score) for hepatocellular carcinoma patients receiving atezolizumab and bevacizumab

Takeshi Hatanaka¹ · Satoru Kakizaki^{2,3} · Atsushi Hiraoka⁴ · Toshifumi Tada⁵ · Masashi Hirooka⁶ · Kazuya Kariyama⁷ · Joji Tani⁸ · Masanori Atsukawa⁹ · Koichi Takaguchi¹⁰ · Ei Itobayashi¹¹ · Shinya Fukunishi¹² · Kunihiko Tsuji¹³ · Toru Ishikawa¹⁴ · Kazuto Tajiri¹⁵ · Hironori Ochi¹⁶ · Satoshi Yasuda¹⁷ · Hidenori Toyoda¹⁷ · Chikara Ogawa¹⁸ · Takashi Nishimura¹⁹ · Noritomo Shimada²⁰ · Kazuhito Kawata²¹ · Hisashi Kosaka²² · Takaaki Tanaka⁴ · Hideko Ohama⁴ · Kazuhiro Nouso⁷ · Asahi Morishita⁸ · Akemi Tsutsui¹⁰ · Takuya Nagano¹⁰ · Norio Itokawa⁹ · Tomomi Okubo⁹ · Taeang Arai⁹ · Michitaka Imai¹⁴ · Atsushi Naganuma²³ · Yohei Koizumi⁶ · Shinichiro Nakamura⁵ · Masaki Kaibori²² · Hiroko Iijima¹⁹ · Yoichi Hiasa⁶ · Takashi Kumada²⁴ · On behalf of the Real-life Practice Experts for HCC (RELPEC) Study Group, and HCC 48 Group (hepatocellular carcinoma experts from 48 clinics in Japan)

Received: 31 October 2022 / Accepted: 31 October 2022 / Published online: 16 November 2022
© Asian Pacific Association for the Study of the Liver 2022

The original article can be found online at <https://doi.org/10.1007/s12072-022-10406-8>.

✉ Takeshi Hatanaka
hatanaka@qk9.so-net.ne.jp

- 1 Department of Gastroenterology, Gunma Saiseikai Maebashi Hospital, Kamishindenmachi, Maebashi, Gunma 564-1, Japan
- 2 Department of Clinical Research, National Hospital Organization Takasaki General Medical Center, Takasaki, Japan
- 3 Department of Gastroenterology and Hepatology, Gunma University Graduate School of Medicine, Maebashi, Japan
- 4 Gastroenterology Center, Ehime Prefectural Central Hospital, Matsuyama, Japan
- 5 Department of Internal Medicine, Japanese Red Cross Himeji Hospital, Himeji, Japan
- 6 Department of Gastroenterology and Metabolism, Ehime University Graduate School of Medicine, Ehime, Japan
- 7 Department of Gastroenterology, Okayama City Hospital, Okayama, Japan
- 8 Department of Gastroenterology and Hepatology, Kagawa University, Kagawa, Japan
- 9 Division of Gastroenterology and Hepatology, Department of Internal Medicine, Nippon Medical School, Tokyo, Japan
- 10 Department of Hepatology, Kagawa Prefectural Central Hospital, Takamatsu, Japan
- 11 Department of Gastroenterology, Asahi General Hospital, Asahi, Japan

- 12 Premier Departmental Research of Medicine, Osaka Medical and Pharmaceutical University, Osaka, Japan
- 13 Center of Gastroenterology, Teine Keijinkai Hospital, Sapporo, Japan
- 14 Department of Gastroenterology, Saiseikai Niigata Hospital, Niigata, Japan
- 15 Department of Gastroenterology, Toyama University Hospital, Toyama, Japan
- 16 Center for Liver-Biliary-Pancreatic Disease, Matsuyama Red Cross Hospital, Matsuyama, Japan
- 17 Department of Gastroenterology and Hepatology, Ogaki Municipal Hospital, Ogaki, Japan
- 18 Department of Gastroenterology, Japanese Red Cross Takamatsu Hospital, Takamatsu, Japan
- 19 Department of Internal Medicine, Division of Gastroenterology and Hepatology, Hyogo College of Medicine, Nishinomiya, Japan
- 20 Division of Gastroenterology and Hepatology, Otakanomori Hospital, Kashiwa, Japan
- 21 Hepatology Division, Department of Internal Medicine II, Hamamatsu University School of Medicine, Hamamatsu, Japan
- 22 Department of Surgery, Kansai Medical University, Hirakata, Japan
- 23 Department of Gastroenterology, National Hospital Organization Takasaki General Medical Center, Takasaki, Japan
- 24 Department of Nursing, Gifu Kyoritsu University, Ogaki, Japan

Correction to: Hepatology International

<https://doi.org/10.1007/s12072-022-10406-8>

The Figs. 2 and 3 were erroneously labeled in the original publication of the article. ‘ALF score’ should be corrected as ‘mALF score’. The Figs. 2 and 3 should have appeared as shown below.

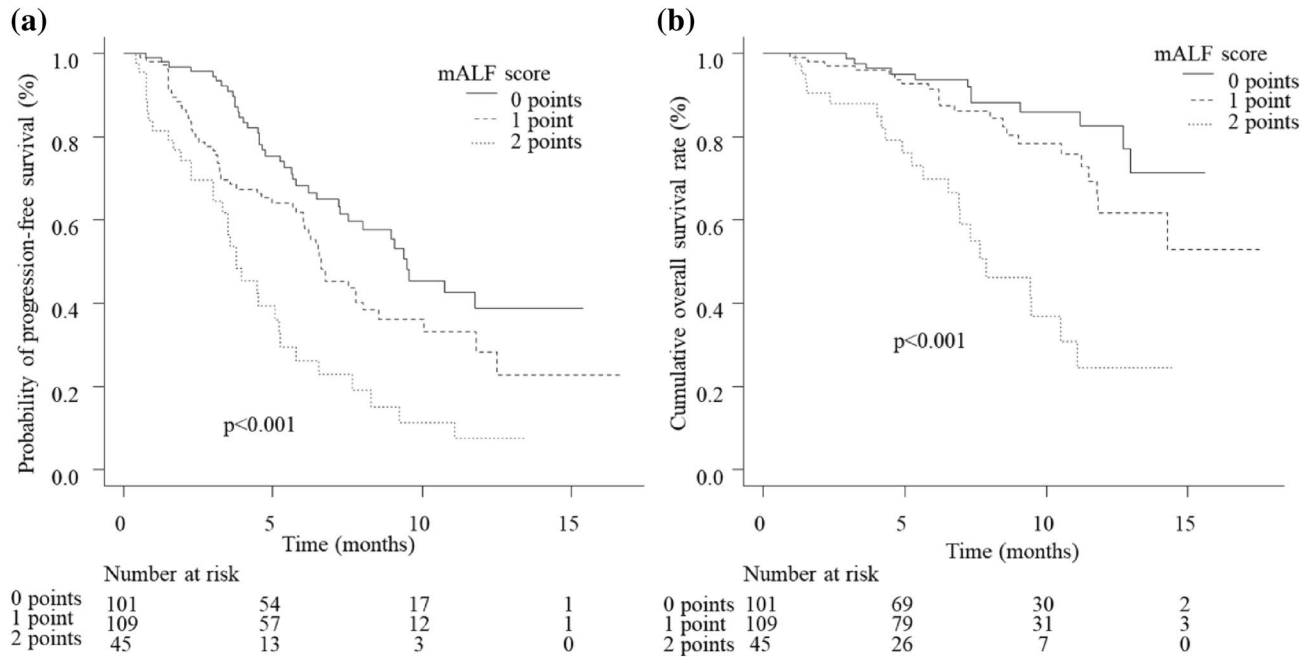


Fig. 2 The PFS and OS according to the mALF score in the training set. **a** The median PFS according to the mALF scores was as follows: 0 points ($n=101$), 9.5 months (95% CI 7.3–not applicable); 1 point ($n=109$), 6.6 months (95% CI 6.0–8.0); and 2 points ($n=45$), 3.8 months (95% CI 3.0–5.2); this amounted to a statistically significant difference ($p < 0.001$, concordance index 0.630). **b** The 1-year OS rates in patients with mALF scores of 0, 1, and 2 points were

82.7% (95% CI 68.9–90.8), 61.7% (95% CI 44.5–74.9), and 24.6% (95% CI 9.0–44.3), respectively, which amounted to a statistically significant difference ($p < 0.001$, concordance index 0.675). *CI* confidence interval, *mALF score* modified albumin–bilirubin grade and α -fetoprotein score, *OS* overall survival, *PFS* progression-free survival

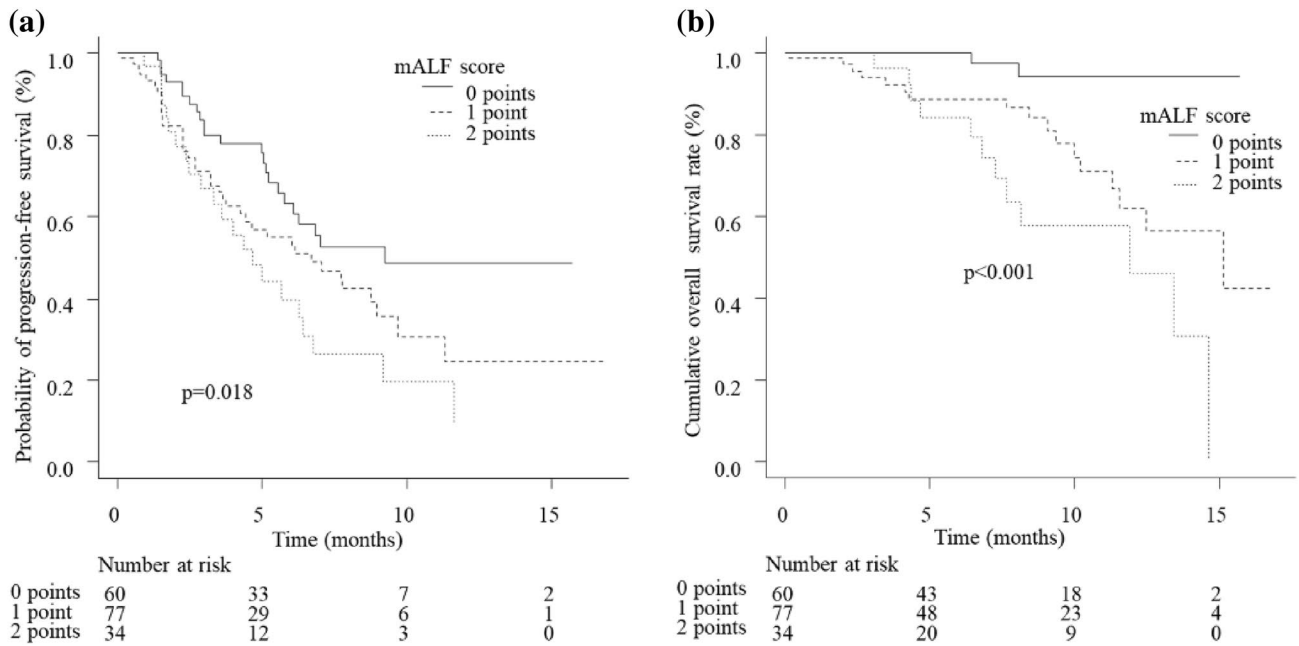


Fig. 3 The PFS and OS according to the mALF scores in the validation set. **a** The median PFS according to the mALF scores was as follows: 0 points ($n=60$), 9.3 months (95% CI 5.8–not applicable); 1 point ($n=77$), 6.7 months (95% CI 3.8–9.0); and 2 points ($n=34$), 4.7 months (95% CI 2.9–6.4). **b** The 1-year OS rate was highest in patients with a mALF score of 0 points (94.2%, 95% CI 78.5–98.5%),

followed by patients with 1 point (61.7%, 95% CI 44.5–74.9) and 2 points (46.3%, 95% CI 19.6–69.4). The PFS and survival curve were well stratified by the mALF score (PFS, $p < 0.018$ concordance index 0.579; OS, $p < 0.001$ concordance index 0.602). *CI* confidence interval, *mALF score* modified albumin–bilirubin grade and α -fetoprotein score, *OS* overall survival, *PFS* progression-free survival

Publisher's Note Springer Nature remains neutral with regard to jurisdictional claims in published maps and institutional affiliations.