




Correction to: Contribution of Zinc-Dependent Delayed Calcium Influx via TRPC5 in Oxidative Neuronal Death and its Prevention by Novel TRPC Antagonist

Sang Eun Park¹ · Ji Hoon Song¹ · Chansik Hong² · Dong Eun Kim¹ · Jee-Won Sul¹ · Tae-Youn Kim^{1,3} · Bo-Ra Seo³ · Insuk So⁴ · Sang-Yeob Kim^{1,5} · Dong-Jun Bae¹ · Mi-Ha Park¹ · Hye Min Lim¹ · In-Jeoung Baek^{1,5} · Antonio Riccio^{6,7} · Joo-Yong Lee^{1,5} · Woo Hyun Shim^{1,5} · Bumwoo Park^{1,8} · Jae-Young Koh^{3,9} · Jung Jin Hwang^{1,5} 

Published online: 12 December 2018
© Springer Science+Business Media, LLC, part of Springer Nature 2018

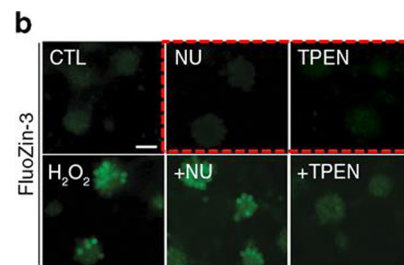
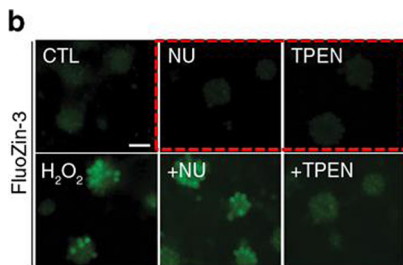
Correction to: Mol Neurobiol

<https://doi.org/10.1007/s12035-018-1258-7>

After the publication of this work errors were noticed in Fig. 3b and 4d.

Figure 3b) Image of TPEN is originally image of NU. I missed out the image of TPEN. This confusion is judged to be a mistake during data processing.

Therefore, I change image of NU and TPEN to correct one as below.



The online version of the original article can be found at <https://doi.org/10.1007/s12035-018-1258-7>

✉ Jae-Young Koh
jkko@amc.seoul.kr

✉ Jung Jin Hwang
jjhwang@amc.seoul.kr

¹ Asan Institute for Life Sciences, Asan Medical Center, Seoul 05505, South Korea

² Department of Physiology, Chosun University School of Medicine, Kwangju 61452, South Korea

³ Neural Injury Research Lab, University of Ulsan College of Medicine, Seoul 05505, South Korea

⁴ Department of Physiology and Institute of Dermatological Science, Seoul National University College of Medicine, Seoul 110-799, South Korea

⁵ Department of Convergence Medicine, University of Ulsan College of Medicine, 88, Olympic-ro 43-gil, Songpa-Gu, Seoul 05505, South Korea

⁶ Department of Cardiology, Boston Children's Hospital, Boston, MA, USA

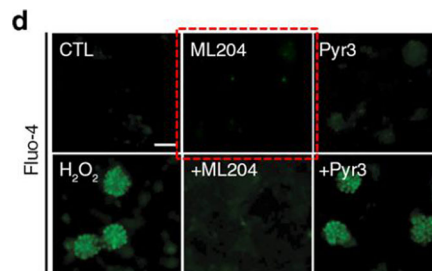
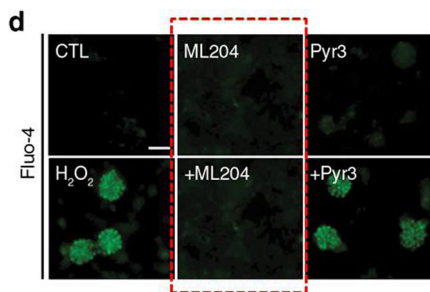
⁷ Department of Neurobiology, Harvard Medical School, Boston, MA, USA

⁸ Biomedical Engineering, Ulsan National Institute of Science and Technology, Ulsan 44919, South Korea

⁹ Department of Neurology, Asan Medical Center, University of Ulsan College of Medicine, 88, Olympic-ro 43-gil, Songpa-Gu, Seoul 05505, South Korea

Figure 4d) Images of ML204 alone and H₂O₂ + ML204 were accidentally duplicated.

Therefore, I change the image of ML204 alone to correct one as below.



Publisher's Note Springer Nature remains neutral with regard to jurisdictional claims in published maps and institutional affiliations.