

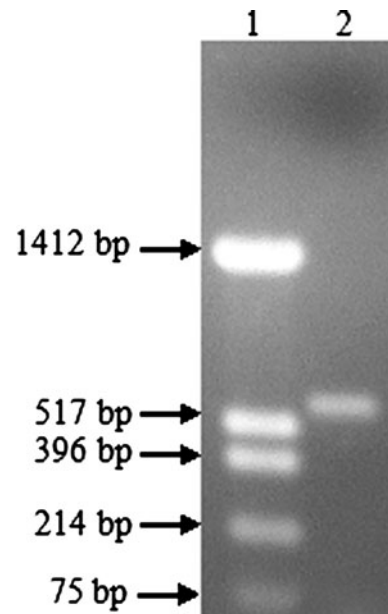
## Erratum to: Isolation of RNA from Field-Grown Jute (*Corchorus capsularis*) Plant in Different Developmental Stages for Effective Downstream Molecular Analysis

Pradipta Samanta · Sanjoy Sadhukhan ·  
Subrata Das · Alpana Joshi · Soumitra K. Sen ·  
Asitava Basu

Published online: 16 July 2011  
© Springer Science+Business Media, LLC 2011

**Erratum to: Mol Biotechnol**  
DOI 10.1007/s12033-011-9376-8

Figure 5 was mistakenly duplicated in place of Figure 4. The correct Figure 4 appears here. The publisher regrets the error.



**Fig. 4** Reverse transcriptase polymerase chain reaction of 4CL gene. Lane 1, *Hin*I digested pUC18 as DNA molecular weight marker and lane 2, amplified 4CL cDNA fragment

The online version of the original article can be found under doi:10.1007/s12033-011-9376-8.

P. Samanta · S. Sadhukhan · S. Das · A. Joshi ·  
S. K. Sen · A. Basu (✉)  
Advanced Laboratory for Plant Genetic Engineering,  
Indian Institute of Technology, Kharagpur 721302, India  
e-mail: asitavab@yahoo.co.in