



Correction to: Enhanced functions of human embryonic stem cell-derived hepatocyte-like cells on three-dimensional nanofibrillar surfaces

Zahra Farzaneh^{1,2} · Behshad Pournasr¹ · Marzeih Ebrahimi^{1,3} · Nasser Aghdami^{1,3} · Hossein Baharvand^{1,2,3}

Published online: 18 June 2021

© Springer Science+Business Media, LLC, part of Springer Nature 2021

Correction to: Stem Cell Rev and Rep (2010) 6:601–610
<https://doi.org/10.1007/s12015-010-9179-5>

The authors regret to acknowledge that a non-intentional human error related to data handling during the preparation of the differentiation images in Fig. 1B (Sox17, insets) resulted in an incorrect figure. We therefore replaced the

“insets of Sox17” by higher magnifications of same images from Fig. 1B of our manuscript. A replacement to Fig. 1 is included below. The authors would like to apologise for any inconvenience caused.

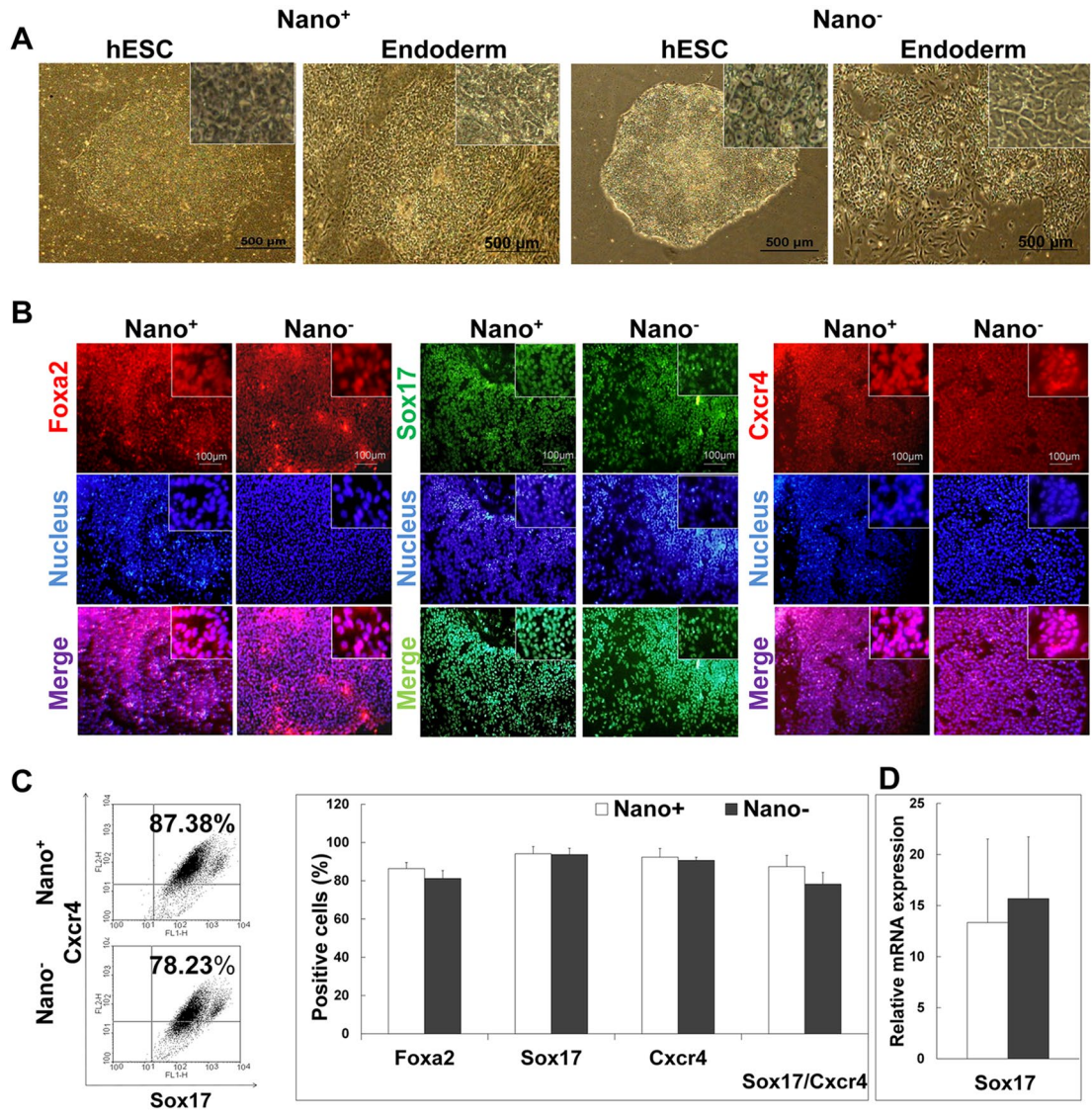
The original article can be found online at <https://doi.org/10.1007/s12015-010-9179-5>.

✉ Hossein Baharvand
Baharvand@RoyanInstitute.org

¹ Department of Stem Cells and Developmental Biology, Royan Institute for Stem Cell Biology and Technology, ACECR, P.O. Box 19395-4644, Tehran, Iran

² Department of Developmental Biology, University of Science and Culture, ACECR, Tehran, Iran

³ Department of Regenerative Medicine, Royan Institute for Stem Cell Biology and Technology, ACECR, Tehran, Iran



Publisher's note Springer Nature remains neutral with regard to jurisdictional claims in published maps and institutional affiliations.