



Author Correction: Selection of DNA Aptamers for Differentiation of Human Adipose-Derived Mesenchymal Stem Cells from Fibroblasts

Mariane Izabella Abreu de Melo^{1,2} · Pricila da Silva Cunha^{1,2} ·
Marcelo Coutinho de Miranda¹ · Joana Lobato Barbosa¹ ·
Jerusa Araújo Quintão Arantes Faria³ · Michele Angela Rodrigues⁴ ·
Alfredo Miranda de Goes¹ · Dawidson Assis Gomes¹

Published online: 7 October 2021

© Springer Science+Business Media, LLC, part of Springer Nature 2021

Author Correction: Applied Biochemistry and Biotechnology
<https://doi.org/10.1007/s12010-021-03618-5>

The original version of this article unfortunately contained a mistake in the supplementary files and Figure 1. The correct supplementary files and Figure 1 are shown here.

The original article has been corrected.

The original article can be found online at <https://doi.org/10.1007/s12010-021-03618-5>.

✉ Mariane Izabella Abreu de Melo
abreu.mariane@gmail.com

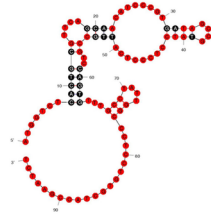
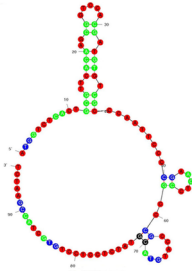
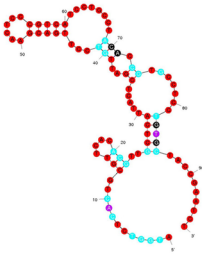
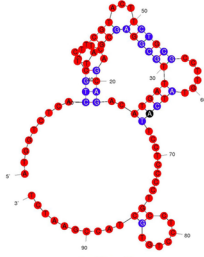
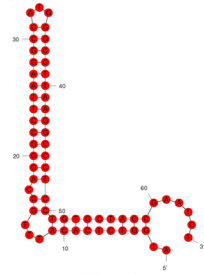
✉ Pricila da Silva Cunha
pribqi@gmail.com

¹ Departamento de Bioquímica e Imunologia, Instituto de Ciências Biológicas, Universidade Federal de Minas Gerais, Belo Horizonte 31270-901, Brazil

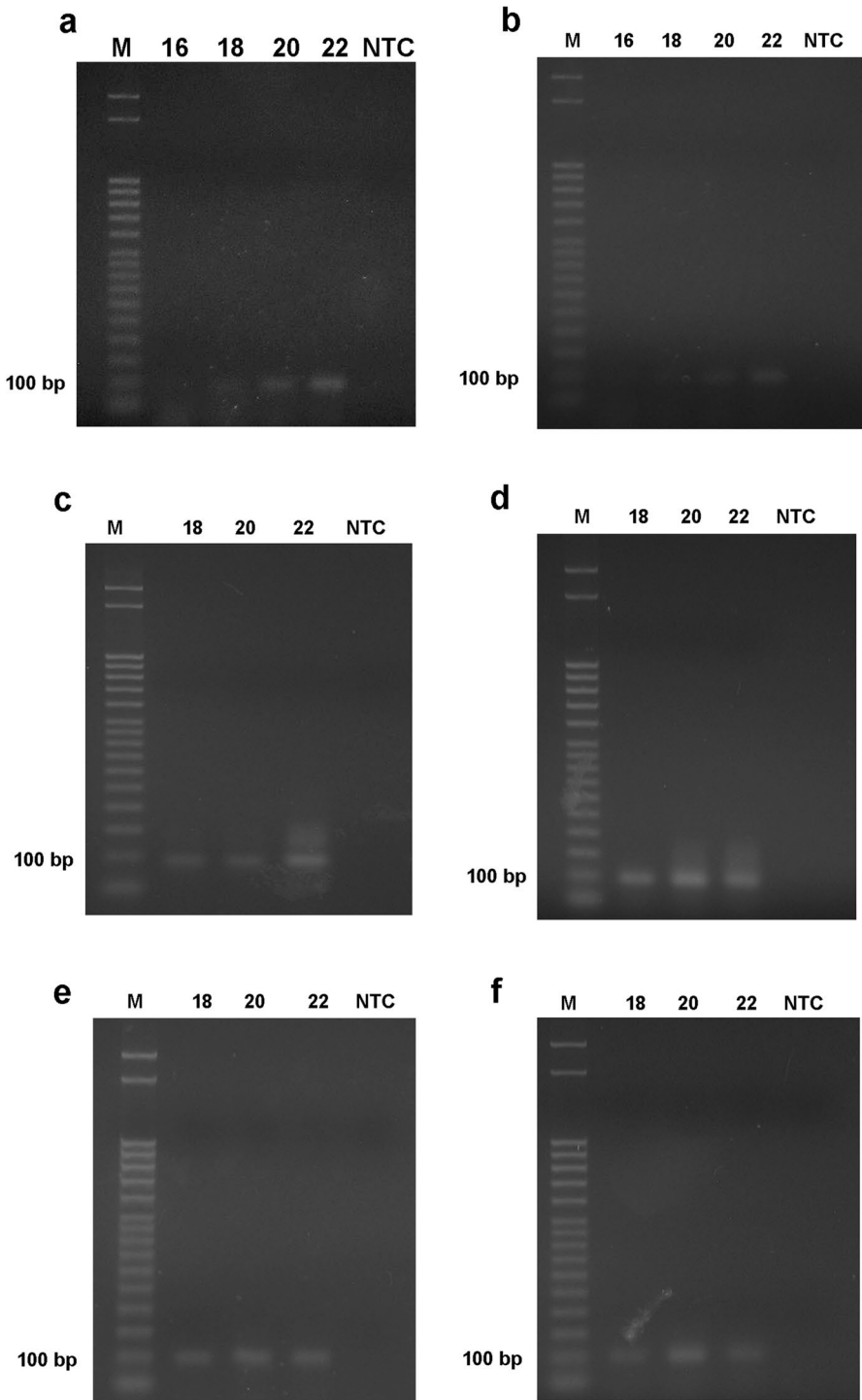
² Present Address: Centro de Desenvolvimento da Tecnologia Nuclear, Comissão Nacional de Energia Nuclear, Av. Antônio Carlos, 6627, Horizonte, Belo 31270-901, Brazil

³ Departamento de Ciências Fisiológicas, Instituto de Ciências Biológicas, Universidade Federal do Amazonas, Manaus 69080-900, Brazil

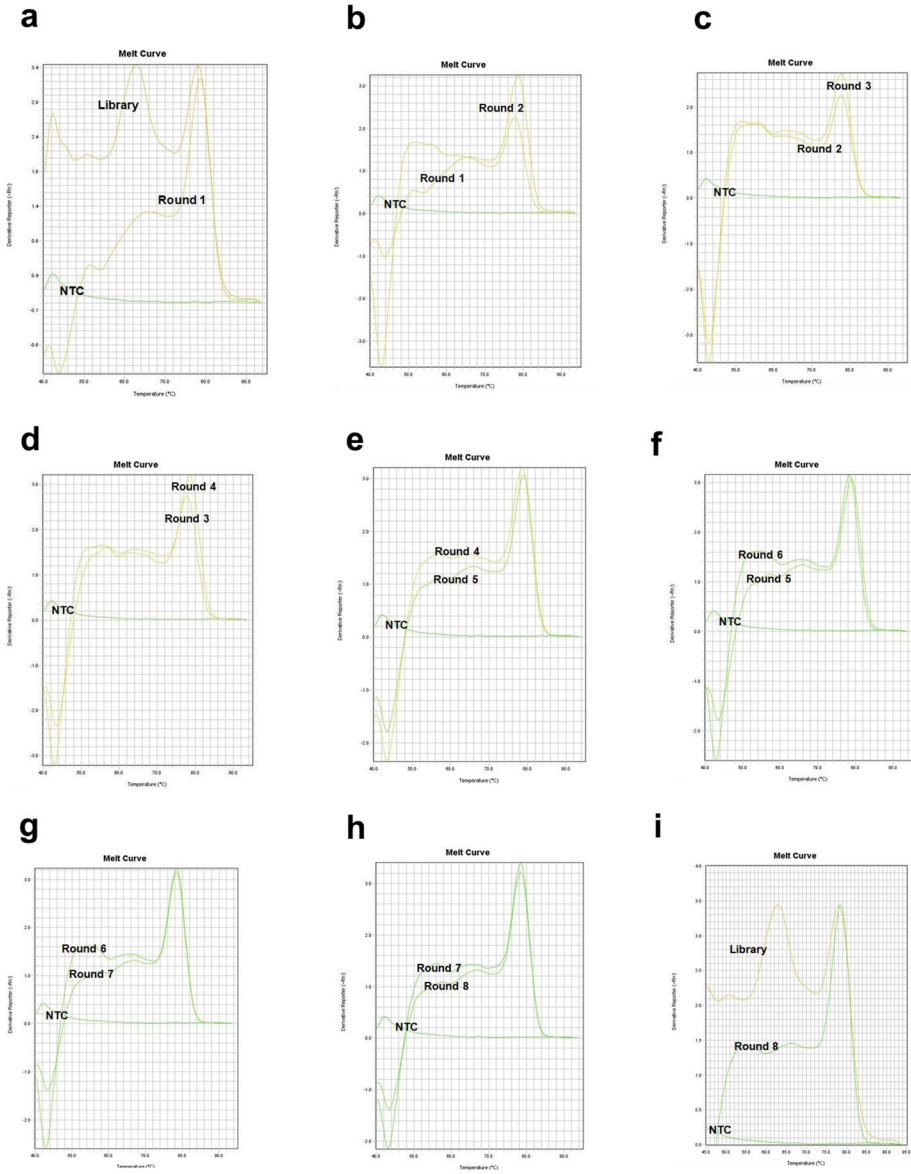
⁴ Departamento de Patologia Geral, Instituto de Ciências Biológicas, Universidade Federal de Minas Gerais, Belo Horizonte 31270-901, Brazil

a Apta 2 $\Delta G = -10.49 \text{ kcal/mol}$ **b Apta 21** $\Delta G = -11.49 \text{ kcal/mol}$ **c Apta 42** $\Delta G = -9.00 \text{ kcal/mol}$ **d Apta 99** $\Delta G = -12.71 \text{ kcal/mol}$ **e Scrambled** $\Delta G = -24.92 \text{ kcal/mol}$

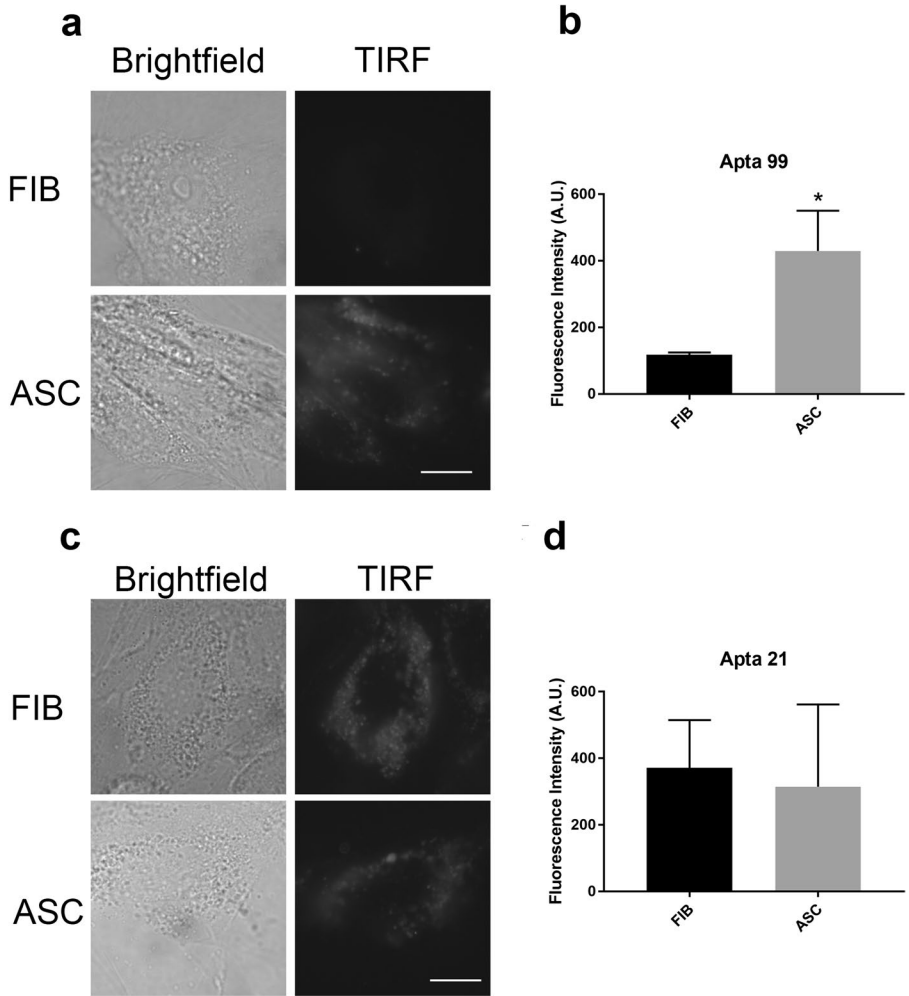
Supplementary figure 1



Supplementary figure 2



Supplementary figure 3



Supplementary figure 4

Publisher's Note Springer Nature remains neutral with regard to jurisdictional claims in published maps and institutional affiliations.