



## Correction to: Pathways to Psychopathology Among Autistic Adults

Susan W. White<sup>1</sup> · Greg J. Siegle<sup>2</sup> · Rajesh Kana<sup>3</sup> · Emily F. Rothman<sup>4</sup>

Published online: 4 September 2023

© The Author(s), under exclusive licence to Springer Science+Business Media, LLC, part of Springer Nature 2023

**Correction to: Current Psychiatry Reports (2023) 25:315–325**

<https://doi.org/10.1007/s11920-023-01429-5>

The original version of this article unfortunately contained an error in the image and caption of Fig. 1. The corrected figure and caption are shown below.

---

The original article can be found online at <https://doi.org/10.1007/s11920-023-01429-5>.

---

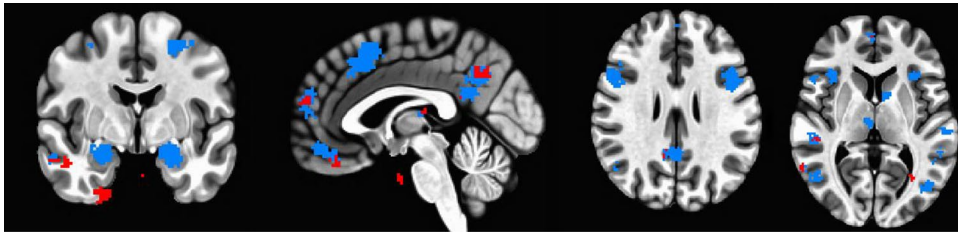
✉ Susan W. White  
swwhite1@ua.edu

<sup>1</sup> Center for Youth Development and Intervention, Department of Psychology, The University of Alabama, Tuscaloosa, AL, USA

<sup>2</sup> School of Medicine, University of Pittsburgh, Pittsburgh, PA, USA

<sup>3</sup> Center for Innovative Research in Autism, Department of Psychology, The University of Alabama, Tuscaloosa, AL, USA

<sup>4</sup> Department of Occupational Therapy, Boston University, Boston, MA, USA



**Fig. 1** Automated fMRI meta-analysis depicting four different slices highlighting brain regions in which activity is associated with autism (from left to right: coronal, sagittal, dorsal axial, ventral axial view).

Blue regions are nodes of activity reliably associated with autism in the literature, and red regions are uniquely associated with autism above and beyond other terms

The original version of this paper has been corrected.

**Publisher's Note** Springer Nature remains neutral with regard to jurisdictional claims in published maps and institutional affiliations.