

Al-Sm (Aluminum-Samarium)

H. Okamoto

The Al-Sm phase diagram in [Massalski2] was updated by [2008Oka].

Further information was provided by [2007Del], who found that the $\text{Sm}_3\text{Al}_{11}$ phase undergoes catatectic reaction at 1070 °C by observing variously heat-treated samples with EPMA and XRD. The Al-Sm phase diagram in [2008Oka] was modified in Fig. 1 by reflecting this new information.

References

- 2007Del:** S. Delsante, R. Raggio, G. Borzone, and R. Ferro, A Revision of the Al-rich Region of the Sm-Al Phase Diagram: The $\text{Sm}_3\text{Al}_{11}$ Phase, *J. Phase Equilib. Diffus.*, 2007, **28**(3), p 240-242
- 2008Oka:** H. Okamoto, Al-Sm (Aluminum-Samarium), *J. Phase Equilib. Diffus.*, 2008, **29**(2), 200

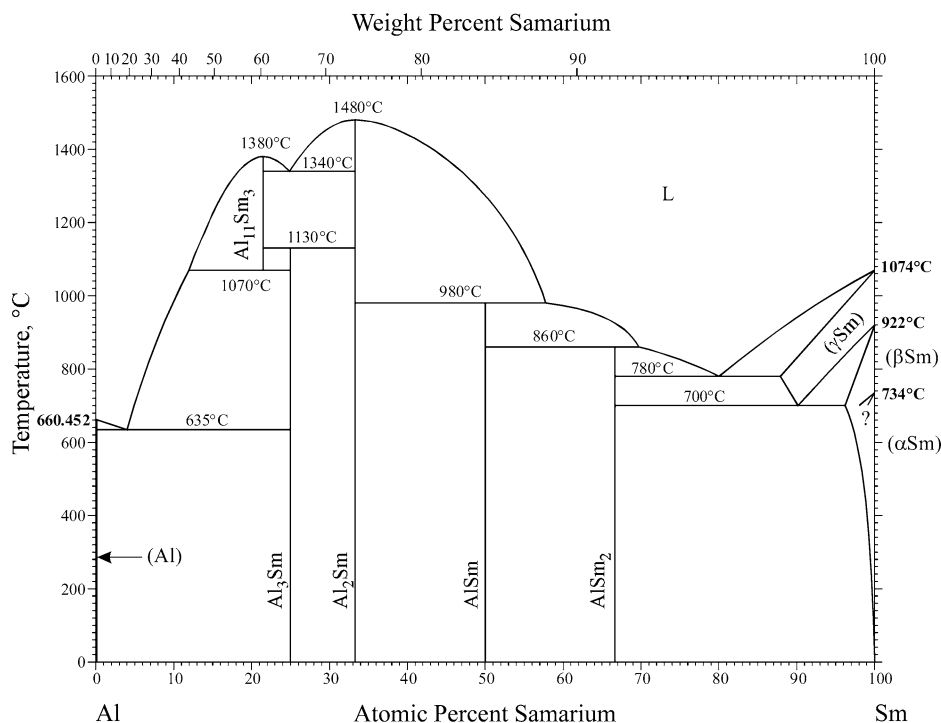


Fig. 1 Al-Sm phase diagram