

Ga-Se (Gallium-Selenium)

H. Okamoto

The Ga-Se phase diagram in [Massalski2] was redrawn from [1976Mof].

Figure 1 shows the Ga-Se phase diagram thermodynamically assessed by [2008Zhe] based on more experimental data than [1976Mof].

Ga-Se crystal structure data in Table 1 are as given in [Massalski2].

References

1976Mof: W.G. Moffatt, Ed., *Handbook of Binary Phase Diagrams*, Genium Publishing Co., Schenectady, NY, 1976 and supplements

2008Zhe: F. Zheng, J.Y. Shen, Y.Q. Liu, W.K. Kim, M.Y. Chu, M. Ider, X.H. Bao, and T.J. Anderson, Thermodynamic Optimization of the Ga-Se System, *CALPHAD*, 2008, **32**(2), p 432-438

Table 1 Ga-Se crystal structure data

Phase	Composition, at.% Se	Pearson symbol	Space group	Strukturbericht designation	Prototype
(Ga)	0	<i>oC8</i>	<i>Cmca</i>	<i>A11</i>	Ga
GaSe	50	<i>hR4</i>	<i>R3m</i>
		<i>hP8</i>	<i>P6</i>
		<i>hP16</i>	<i>P6₃mc</i>
$\beta\text{Ga}_2\text{Se}_3$	59.3-61	<i>c**</i>
$\alpha\text{Ga}_2\text{Se}_3$	60	<i>mC20</i>	<i>Cc</i>
(Se)	100	<i>hP3</i>	<i>P3₁21</i>	<i>A8</i>	γSe

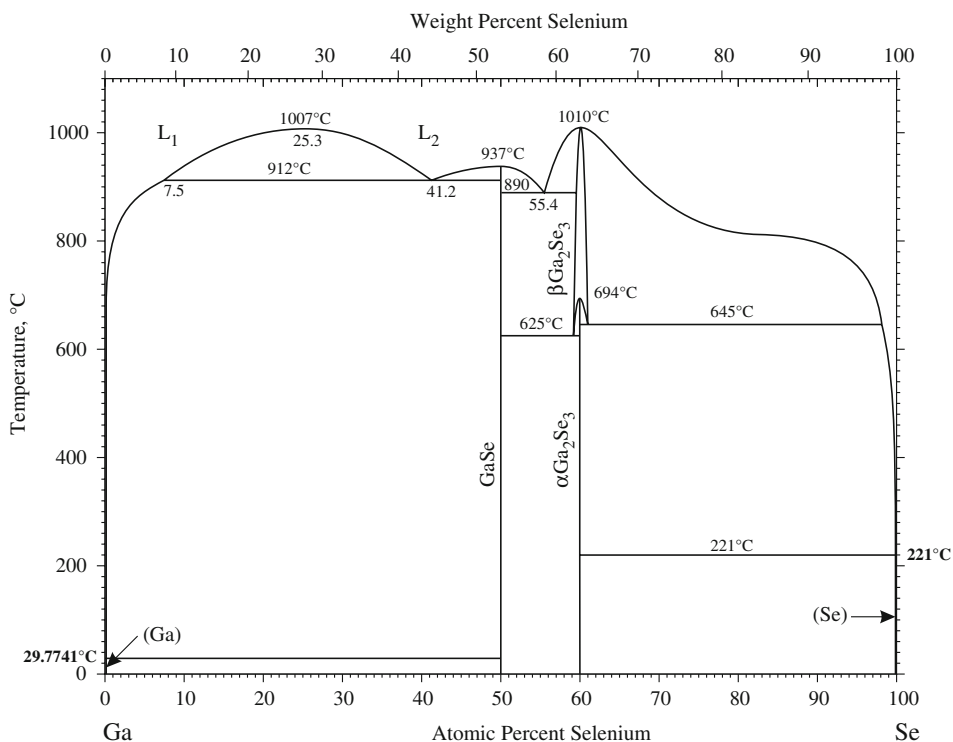


Fig. 1 Ga-Se phase diagram