

Li-Lu (Lithium-Lutetium)

H. Okamoto

The Li-Lu phase diagram was unknown in [Massalski2]. Figure 1 shows the Li-Lu phase diagram constructed based on a schematic phase diagram and a table of invariant reaction temperatures and compositions given in [1998Gan].

Table 1 shows Li-Lu crystal structure data.

References

1998Gan: N.N. Ganiev, Kh.M. Nazarov, and M.D. Badalov, Interaction of Lithium with Rare-earth Metals, *Izv. Ross. Akad. Nauk, Metally*, 1998, (6), p 109-112, in Russian; TR: *Russ. Metall.*, 1998, (6), p 132-136

Table 1 Li-Lu crystal structure data

Phase	Composition, at.% Lu	Pearson symbol	Space group	Strukturbericht designation	Prototype
(β Li)	0 to 8.03	<i>cI2</i>	<i>Im$\bar{3}m$</i>	<i>A2</i>	W
(Lu)	? to 100	<i>hP2</i>	<i>P6$_3$/mmc</i>	<i>A3</i>	Mg

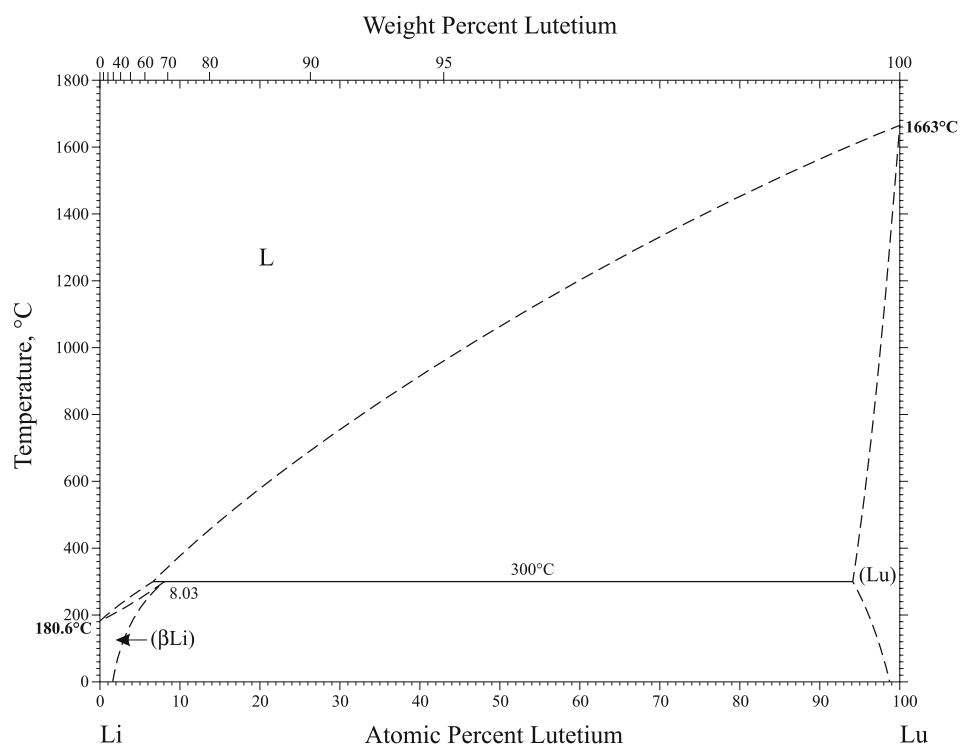


Fig. 1 Li-Lu phase diagram