

Al-Ru (Aluminum-Ruthenium)

H. Okamoto

The Al-Ru phase diagram in [Massalski2] was updated by [1997Oka] primarily based on the work of [1996Bon]. This system was thermodynamically assessed by [2003Pri]. Two models have been tested for the AlRu phase. Figure 1 shows one of the results with a narrower solubility range, based on a "modified sublattice model." Some reaction temperatures in Fig. 1 have been modified by this editor for consistency between the figure and the table in the original paper.

References

1996Bon: T.D. Boniface and L.A. Cornish: "Investigation of the Aluminum-Ruthenium Phase Diagram Above 25 at.% Ruthenium," *J. Alloys Compds.*, 1996, 234, pp. 275-79.

1997Oka: H. Okamoto: "Al-Ru (Aluminum-Ruthenium)" *J. Phase Equilibria*, 1997, 18(1), p. 105.

2003Pri: S.N. Prins, L.A. Cornish, W.E. Stumpf, and B. Sundman: "Thermodynamic Assessment of the Al-Ru System," *Calphad*, 2003, 27(1), pp. 79-90.

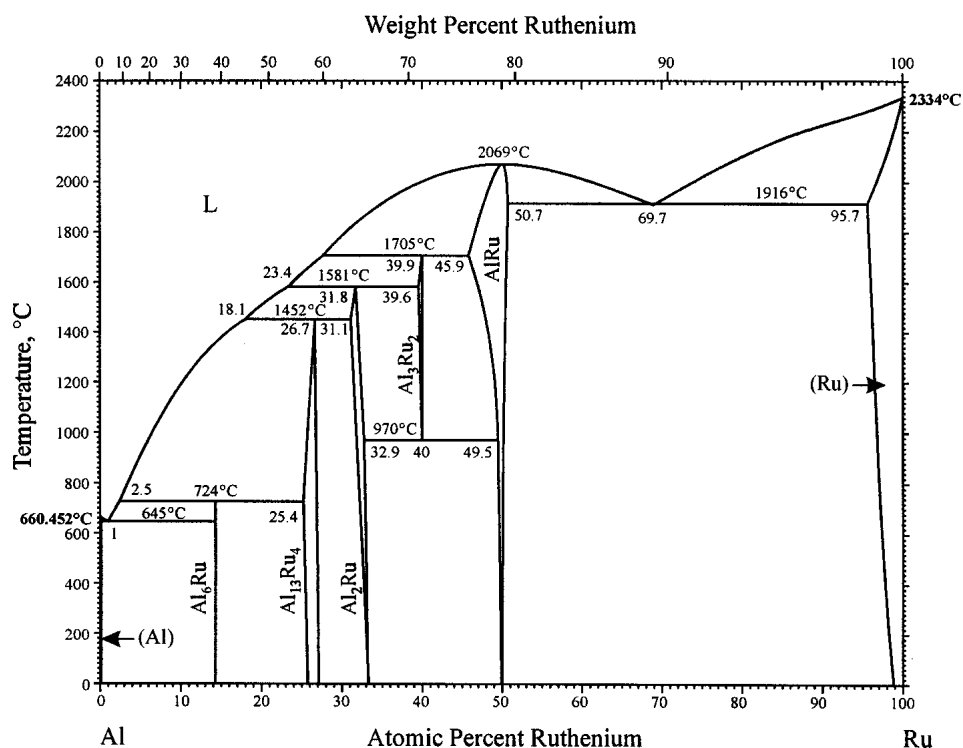


Fig. 1 Al-Ru phase diagram