

Erratum to: Microstructure Evolution and Rapid Solidification Behavior of Blended Nickel-Based Superalloy Powders Fabricated by Laser Powder Deposition



YUAN TIAN, RAYNALD GAUVIN, and MATHIEU BROCHU

DOI: 10.1007/s11661-016-3556-x

© The Minerals, Metals & Materials Society and ASM International 2016

**Erratum to: METALLURGICAL AND MATERIALS
TRANSACTIONS A
DOI [10.1007/s11661-016-3505-8](https://doi.org/10.1007/s11661-016-3505-8)**

IN the original article the captions for Figures 7, 8, and 9 were correct, but the images were incorrect. Following are the correct images with their captions:

YUAN TIAN, Ph.D. Student, RAYNALD GAUVIN, Professor, and MATHIEU BROCHU, Associate Professor, are with the Department of Mining and Materials Engineering, McGill University, Montreal, QC H3A 0C5, Canada. Contact e-mail: mathieu.brochu@mcgill.ca

The online version of the original article can be found under doi:[10.1007/s11661-016-3505-8](https://doi.org/10.1007/s11661-016-3505-8).

Article published online May 18, 2016

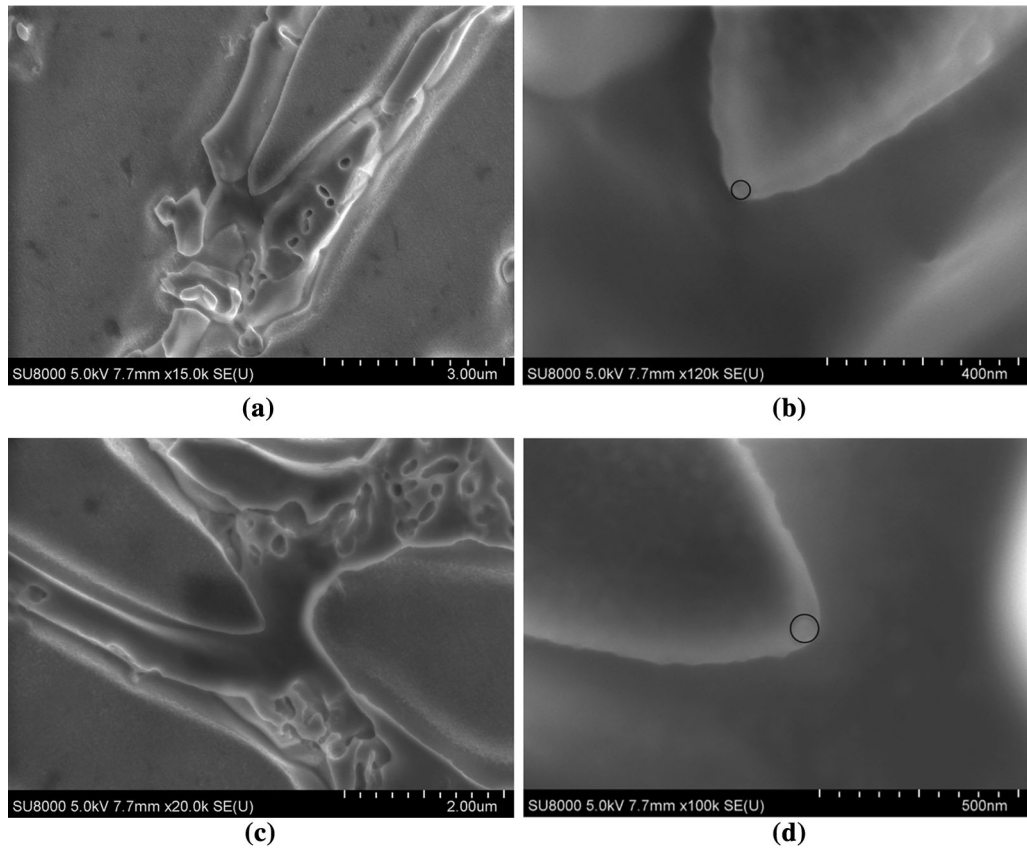


Fig. 7—Measurement of dendrite tip radius in top clads: (a) low magnification dendritic structure; (b) estimation of dendrite tip radius (15 nm); (c) low magnification dendritic structure; and (d) estimation of dendrite tip radius (30 nm).

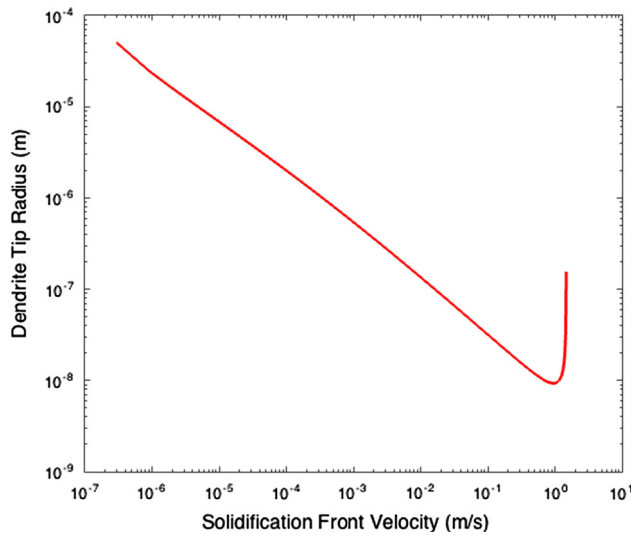


Fig. 8—KGT model describing the dendrite tip radius as a function of SFV.

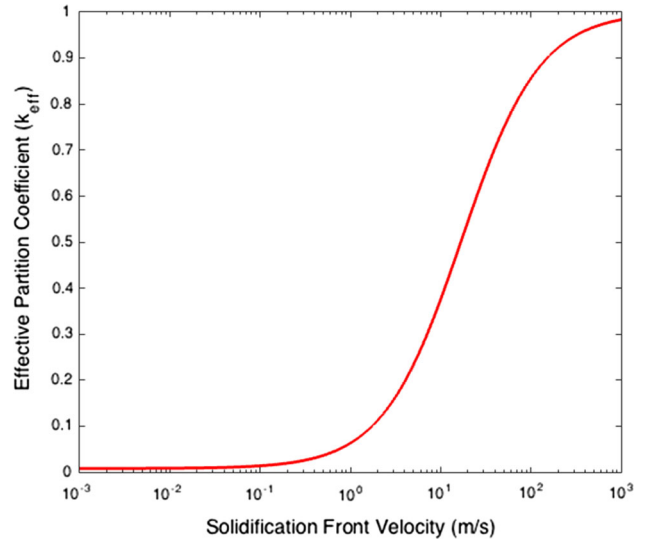


Fig. 9—Effective partition coefficient of B as a function of SFV.