

Structural and Textural Characterization of the Substrate and Coated Layer in an Industrial Galvannealed Interstitial-Free Steel

A. CHAKRABORTY, R.K. RAY, and S. SANGAL

DOI: 10.1007/s11661-008-9648-5

© The Minerals, Metals & Materials Society and ASM International 2008

Erratum to: METALLURGICAL AND MATERIALS TRANSACTIONS A

DOI: 10.1007/s11661-008-9589-z

THERE is an error in the data presented in Figure 9 in the original article. The corrected Figure 9 is as follows:

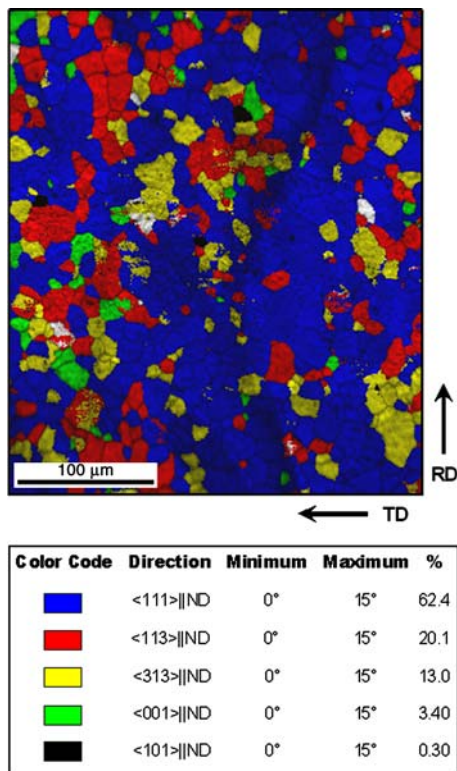


Fig. 9—Color-coded map of crystal directions of substrate steel.

A. CHAKRABORTY, Researcher, and R.K. RAY, Visiting Scientist, are with the Research and Development Division, Tata Steel, Jamshedpur PIN-831 007, India. Contact e-mail: ani_chakra@yahoo.com S. SANGAL, Professor, is with the Indian Institute of Technology, Kanpur PIN-208 016, India.

The online version of the original article can be found under doi: [10.1007/s11661-008-9589-z](https://doi.org/10.1007/s11661-008-9589-z).

Article published online August 14, 2008