

Correction to: The Association of Subspecialty and Sex with Industry Payments to Internal Medicine Physicians Who Recently Completed Training



Yong Hyun Park, MD, PhD^{1,2}, Paul O'Rourke, MD, MPH³, Andrew Gabrielson, MD¹, Sean O. Hogan, PhD⁴, Eric Holmboe, MD⁴, Yuezhou Jing¹, Kenji Yamazaki, PhD⁴, Bruce J. Trock, PhD¹, and Misop Han, MD, MS¹

¹James Buchanan Brady Urological Institute, Department of Urology, Johns Hopkins School of Medicine, Baltimore, MD, USA; ²Department of Urology, Seoul St. Mary's Hospital, College of Medicine, The Catholic University of Korea, Seoul, Republic of Korea; ³Division of General Internal Medicine, Johns Hopkins Bayview Medical Center, Baltimore, MD, USA; ⁴Accreditation Council for Graduate Medical Education (ACGME), Chicago, IL, USA.

J Gen Intern Med

DOI: 10.1007/s11606-024-08677-y

© The Author(s), under exclusive licence to Society of General Internal Medicine 2024

Correction to: J Gen Intern Med

<https://doi.org/10.1007/s11606-023-08351-9>

This paper was published without the associated figures. They are reproduced here with legends.

The original article can be found online at <https://doi.org/10.1007/s11606-023-08351-9>.

Published online: 21 February 2024

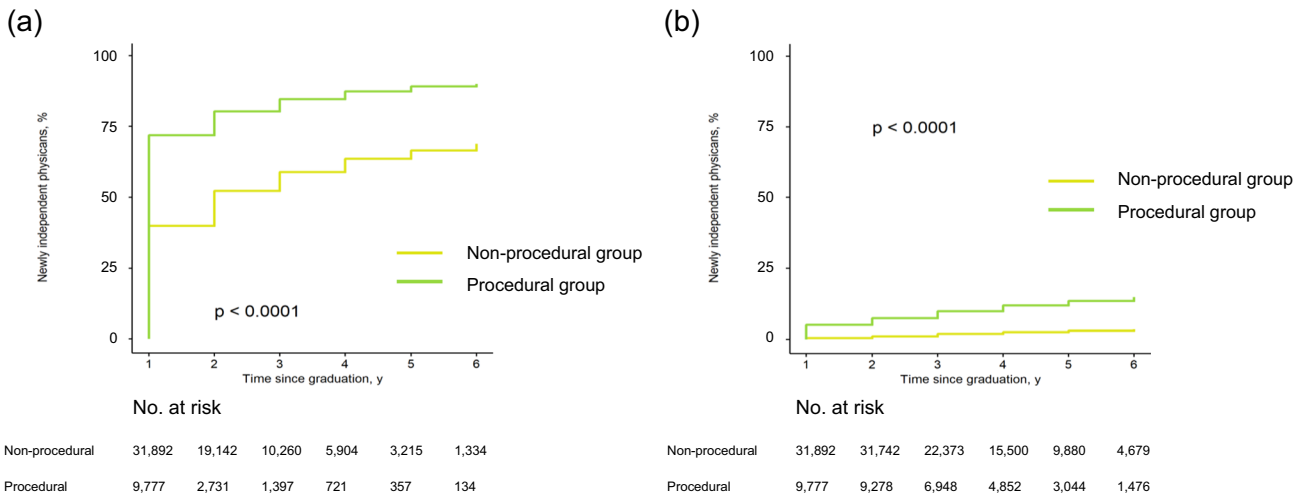


Figure 1 Cumulative incidence of newly independent physicians who received any general payments and at least \$5000 of general payments after completion of training. **a** Accepting any general payments stratified by procedure intensity. **b** Accepting at least \$5000 of general payments stratified by procedure intensity.

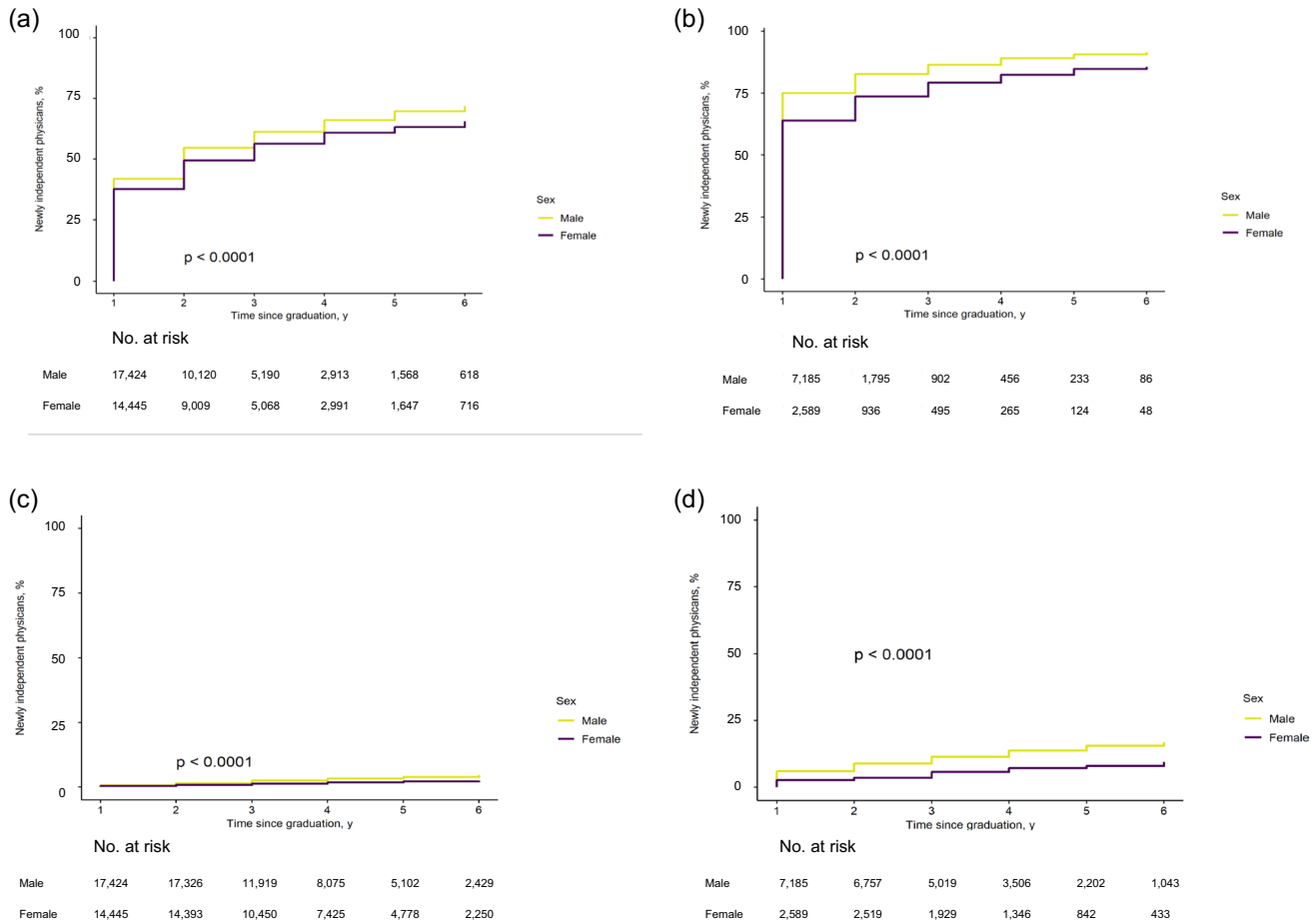


Figure 2 Cumulative incidence of newly independent physicians in the procedural and non-procedural groups who received any general payments and at least \$5000 of general payments after completion of training stratified by sex. **a** Accepting any general payments in the non-procedural group stratified by sex. **b** Accepting any general payments in the procedural group stratified by sex. **c** Accepting at least \$5000 of general payments in the non-procedural group stratified by sex. **d** Accepting at least \$5000 of general payments in the procedural group stratified by sex.

Corresponding Author: Yong Hyun Park, MD, PhD; , James Buchanan Brady Urological Institute, Department of Urology, Johns Hopkins School of Medicine, Baltimore, MD, USA (e-mail: lestato4@empas.com lestato4@catholic.ac.kr).

Data Availability All data used for this manuscript is public data.

Publisher's Note Springer Nature remains neutral with regard to jurisdictional claims in published maps and institutional affiliations.