



# Detection of the intimal tear in aortic dissection and ulcer-like projection in intramural hematoma: usefulness of full-phase retrospective ECG-gated CT angiography

Satoru Yanagaki<sup>1</sup> · Takuya Ueda<sup>1</sup> · Atsuro Masuda<sup>1</sup> · Hideki Ota<sup>1</sup> · Yuta Onaka<sup>1</sup> · Masatoshi Kojima<sup>2</sup> · Takashi Hattori<sup>3</sup> · Wahei Mihara<sup>3</sup> · Kei Takase<sup>1</sup>

Received: 3 March 2020 / Accepted: 15 June 2020 / Published online: 24 July 2020

© The Author(s) 2020

## Abstract

**Purpose** To compare the accuracy of non-electrocardiogram (ECG)-gated CT angiography (CTA), single-diastolic-phase ECG-gated CTA, and full-phase ECG-gated CTA in detecting the intimal tear (IT) in aortic dissection (AD) and ulcer-like projection (ULP) in intramural hematoma (IMH).

**Materials and methods** A total of 81 consecutive patients with AD and IMH of the thoracic aorta were included in this single-center retrospective study. Non-ECG-gated CTA, single-diastolic-phase ECG-gated CTA, and full-phase ECG-gated CTA were used to detect the presence of the IT and ULP in thoracic aortic regions including the ascending aorta, aortic arch, and proximal and distal descending aorta.

**Results** The accuracy of detecting the IT and ULP was significantly greater using full-phase ECG-gated CTA (88% [95% CI: 100%, 75%]) than non-ECG-gated CTA (72% [95% CI: 90%, 54%],  $P=0.001$ ) and single-diastolic-phase ECG-gated CTA (76% [95% CI: 93%, 60%],  $P=0.008$ ).

**Conclusion** Full-phase ECG-gated CTA is more accurate in detecting the IT in AD and ULP in IMH, than non-ECG-gated CTA and single-diastolic-phase ECG-gated CTA.

**Keywords** Aortic dissection · Intramural hematoma · Retrospective ECG-gated CTA · Intimal tear · Ulcer-like projection

## Abbreviations

|     |                       |
|-----|-----------------------|
| IT  | Intimal tear          |
| AD  | Aortic dissection     |
| ULP | Ulcer-like projection |
| IMH | Intramural hematoma   |
| ECG | Electrocardiogram     |

## Introduction

Aortic dissection (AD) is a life-threatening disease with an estimated incidence of six to 10 cases per 100,000 persons per year and a mortality rate of 25–30% [1, 2].

Recent guidelines for AD have emphasized the importance of detecting the intimal tear (IT) including entry/re-entry in AD and ulcer-like projection (ULP) in intramural hematoma (IMH) [3–5]. There are three reasons for this. First, several researches emphasize the importance of detection of IT of AD at initial surgery, which is significant findings to determine indication of aortic arch replacement rather than simple ascending aortic replacement as it is a significant risk factor for reoperation [6, 7]. Second, the presence of ULP in IMH is also a significant factor in determining the surgical indication of complicated IMH [8–10]. Third, in thoracic endovascular aortic repair, complete sealing of the IT and ULP is necessary to achieve a satisfactory treatment outcome [11–14]. Therefore, it is crucial to accurately detect the IT in AD and ULP in IMH. Following such change in the treatment strategies, the clinical significance to

✉ Satoru Yanagaki  
satoru.yanagaki.s2@dc.tohoku.ac.jp

<sup>1</sup> Departments of Diagnostic Radiology, Tohoku University Graduate School of Medicine, Seiryō 1-1, Sendai 980-8574, Japan

<sup>2</sup> Department of Radiology, Seikeikai Chiba Medical Center, 1-7-1, Minami-cho, Chuo-ku, Chiba 260-0842, Japan

<sup>3</sup> Departments of Cardiovascular Surgery, Seikeikai Chiba Medical Center, 1-7-1, Minami-cho, Chuo-ku, Chiba 260-0842, Japan

accurately detect the IT in AD and ULP in IMH has become more important than ever.

Recently, several papers reported the usefulness of electrocardiogram-gated CT angiography (ECG-gated CTA) for the diagnosis of AD and IMH [15–17]. ECG-gated CTA was originally used for cardiac disease to improve the image quality by reducing the motion artifacts of the structure due to the pulsatile motion during the cardiac cycle [18, 19]. ECG-gated CTA entails either prospective or retrospective data acquisition. Prospective ECG-gated CTA only acquires image data at a predetermined single phase of the cardiac cycle; in contrast, retrospective ECG-gated CTA acquires image data during the whole cardiac cycle, which enables the reconstruction of images from any phase in the cardiac cycle.

Previous studies have assessed the CTA image quality mainly based on the reduction of motion artifacts and concluded that ECG-gated CTA produces better image quality with less motion artifacts than non-ECG-gated CTA [20, 21]. However, little is known about the precise accuracy of detecting the IT in AD and ULP in IMH on ECG-gated CTA. Furthermore, although previous studies report that the diastolic phase shows the least motion artifacts in the cardiac phase and, therefore, recommend prospective single-diastolic-phase ECG-gated CTA to reduce radiation exposure [20–22], it remains unclear whether the diastolic phase is the best cardiac phase in which to detect the IT in AD and ULP in IMH.

The purpose of the present study was to compare the accuracy in detecting the IT in AD and ULP in IMH between non-ECG-gated CTA, single-diastolic-phase ECG-gated CTA, and full-phase ECG-gated CTA.

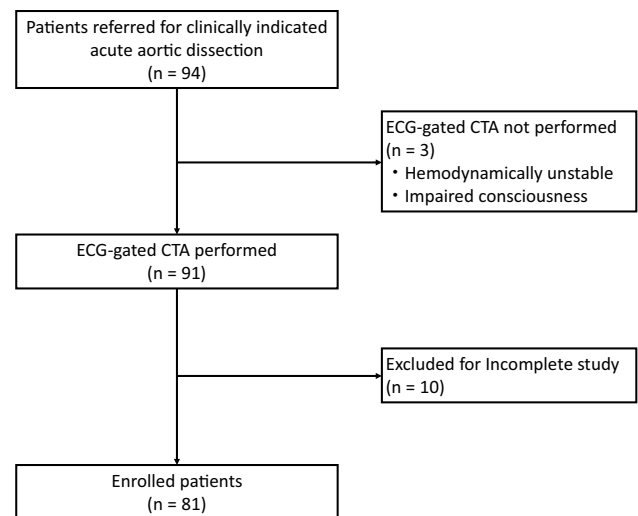
## Methods

### Study participants

This study is a retrospective cohort study that included patients treated in a single institution. The institutional review board approved this study and waived the requirement for informed consent. Consecutive patients who were referred to the emergency unit in our institution from January 2016 to December 2018 and were diagnosed with AD and IMH were included. Of 94 included patients, 81 patients who underwent ECG-gated CTA were included in this study (Fig. 1).

### CT angiography protocol

All CT examinations were performed using one of two CT scanners (SOMATOM Definition AS+ or SOMATOM Definition Flash; Siemens Medical Solutions, Forchheim,



**Fig. 1** Flow diagram of study participants

Germany). The patients were scanned with a tube voltage of 120 kV and a tube current of 180 mAs/rotation. The pitch was set to 0.2 with a gantry rotation time of 0.33 s in ECG-gated CTA, and to 1.2 with a gantry rotation time of 0.28 s in non-ECG-gated CTA. The collimation was 128 × 0.6 mm. Dose modulation was not performed.

After a scout view was obtained, unenhanced images were acquired. A bolus-triggering technique was used in all patients. Contrast medium (Iopamiron 370 [Bayer Health care, Osaka, Japan] or Oiparomin 370 [Fuji Pharmaceutical Kogyo Co., Ltd, Tokyo, Japan]) was initially injected via the split-bolus injection technique at 20 mgI/kg/s for 20 s, followed by 10 mgI/kg/s for 10 s. The thoracic ECG-gated CTA in the aortic contrast-enhanced phase was acquired. The scan delay was determined by automated bolus triggering to detect when the enhancement within the ascending aorta exceeded 100 HU. Immediately after the thoracic ECG-gated CTA, whole body non-ECG-gated CTA in the aortic contrast-enhanced phase was acquired. The approximate time for each scan was 6 s in first phase and 4 s in second phase. Beta blockers were not administered to control the heart rate.

### Image reconstruction

For each patient, ECG-gated CTA data were reconstructed into a 10-image series at 0–90% with 10% interval increments of the R–R interval in the cardiac cycle. Images were reconstructed with a 1-mm interval using the soft tissue convolution kernel I36f. All datasets were transferred to a workstation (Osirix v.10.0.3; Pixmeo SARL, Bernex, Switzerland) for image assessment.

## Image analysis

The non-ECG-gated CTA, single-diastolic-phase ECG-gated CTA at 70% of the R–R interval, and full-phase ECG-gated CTA were assessed independently in random order by two radiologists (S.Y. and A.M.) with 5 and 10 years of experience in cardiovascular imaging, respectively. Both radiologists were blinded to the patient information. Images at 70% of the cardiac cycle from full-phase ECG-gated CTA is used as single-diastolic-phase ECG-gated CTA.

Two radiologists evaluated the presence or absence of defined lesions according to the following criteria. IT was defined as a defect of the intimal flap with communication between the true and false lumen in AD [23]. ULP was defined as a localized pouch filled with contrast medium protruding into the thrombosed false lumen of the aorta [24].

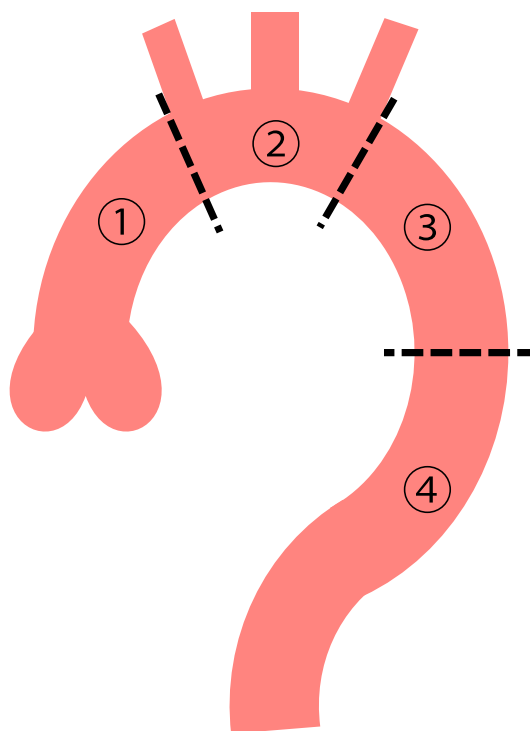
The thoracic aorta was divided into four segments: the ascending aorta, aortic arch, proximal descending aorta, and distal descending aorta (Fig. 2). The presence of IT and ULP was independently assessed in each segment of the thoracic aorta on non-ECG-gated CTA images, single-diastolic-phase ECG-gated CTA images, and full-phase ECG-gated CTA images. In the assessment of full-phase ECG-gated CTA, all 10 datasets were displayed at the same time on the workstation and multiplanar reformations of each dataset were reconstructed if needed. In cases of assessment disagreement, the final decision was obtained by consensus of the two radiologists. To avoid any memory effect, there was a 1-month interval between the assessments performed using non-ECG-gated CTA images, single-diastolic-phase ECG-gated CTA images, and full-phase ECG-gated CTA images [25]. Subgroup analyses were performed by dividing the patients into those with AD and IMH, and separately analyzing each segment of the thoracic aorta.

## Confirmation of the presence of IT and ULP

The presence and location of IT and ULP were confirmed by either the surgical record for patients who underwent surgery, by the angiographic findings for patients who underwent angiography, or by follow-up CT for patients who did not undergo surgery or angiography; We judged that lesions were present when they were detected more than three times on follow-up CT, considering reproducibility. Follow-up CT was performed 1 week, 2 weeks, 1 month and 3 months after admission.

## Statistical analysis

All statistical analyses were performed using commercially available software (JMP Pro 14.0.0, SAS institute Inc.; Cary, NC, USA). The McNemar test was used to compare the accuracy between non-ECG-gated CTA, single-diastolic-phase



**Fig. 2** Segmentation of thoracic aorta for assessment. 1, ascending aorta; 2, aortic arch; 3, proximal descending aorta; 4, distal descending aorta the ascending aorta was defined from the origin of the right coronary artery to the origin of the brachiocephalic artery (zone 0 in TEVAR), the aortic arch was defined from the origin of the brachiocephalic artery to the origin of the left subclavian artery (Zone 1–2 in TEVAR), the proximal descending aorta was defined from the origin of the left subclavian artery to the level of the pulmonary bifurcation (Zone 3 in TEVAR), and the distal descending aorta was defined from the level of the pulmonary bifurcation to the aortic hiatus of the diaphragm (Zone 4 in TEVAR)

ECG-gated CTA, and full-phase ECG-gated CTA. The accuracy was calculated by following formula:  $(\text{True positive} + \text{True negative}) / (\text{True positive} + \text{True negative} + \text{False positive} + \text{False negative})$ . A *P* value of less than 0.05 was considered statistically significant. The interobserver agreement between the two radiologists regarding the judgment of IT and ULP was evaluated using  $\kappa$  statistics. A  $\kappa$  value of more than 0.81 corresponded to excellent interobserver agreement, while values of 0.61–0.80 corresponded to good agreement.

## Results

### Study participants

A total of 81 patients (57 men, 24 women; mean age, 66.9 years  $\pm$  12.5; range, 32–94 years) successfully underwent CTA without complications. The demographic

characteristics are shown in Table 1. Aortic anatomical segments including AD and IMH were 97 and 107 segments,

**Table 1** Patient characteristics

|   |             |
|---|-------------|
| Mean age (years)                            | 66.9 ± 12.5 |
| Sex   |             |
| Male  | 57 (70)     |
| Female                                      | 24 (30)     |
| Stanford classification                     |             |
| Type A                                      | 25 (31)     |
| Type B                                      | 56 (69)     |
| Disease type                                |             |
| Aortic dissection                           | 36 (44)     |
| Intramural hematoma                         | 45 (56)     |
| Surgery                                     |             |
| Ascending aorta replacement                 | 20 (25)     |
| Total aortic arch replacement (TAR)         | 5 (6.1)     |
| TAR + open stent grafting                   | 8 (9.9)     |
| Thoracic endovascular aortic repair (TEVAR) | 7 (8.6)     |
| Medical treatment without surgery nor TEVAR | 41 (51)     |
| Unable to follow-up due to patient death    | 6 (7.4)     |

Continuous variables are expressed as mean ± standard deviation

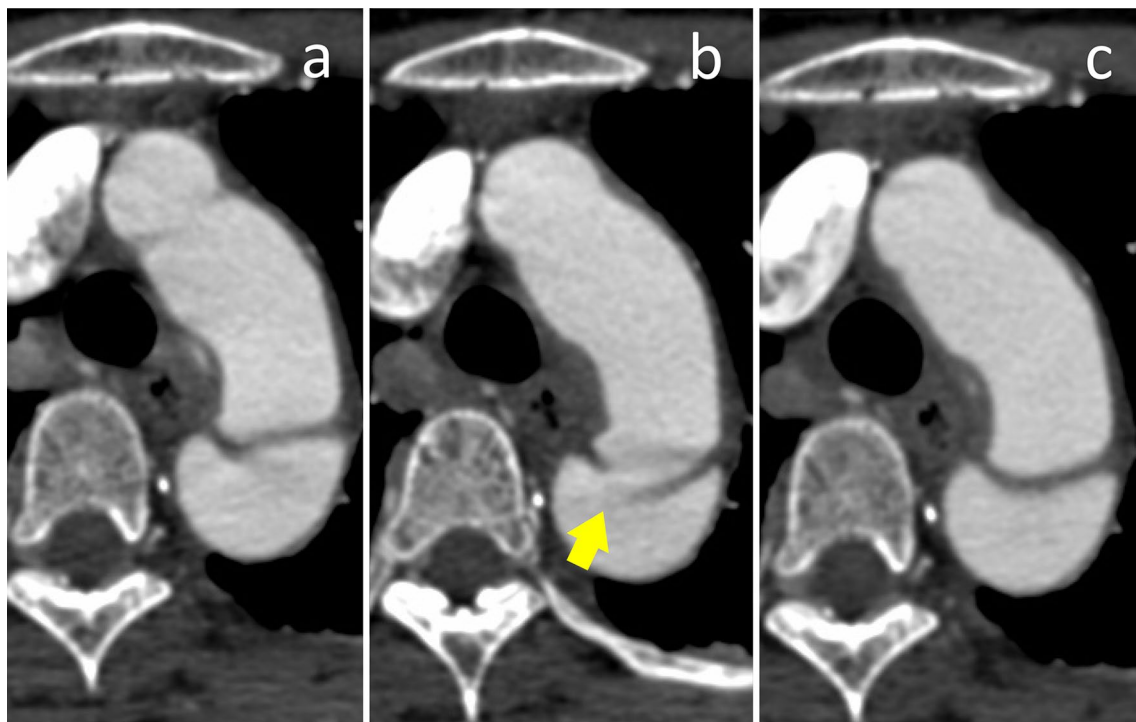
Categorical variables are expressed as *n* (%)

respectively. A total of 29 ITs in 97 dissected segments out of 144 available segments (4 anatomical segments for each 36 patients), and 25 ULPs in 107 IMH segments out of 180 available segments (4 anatomical segments for each 45 patients) were detected.

### Main analysis

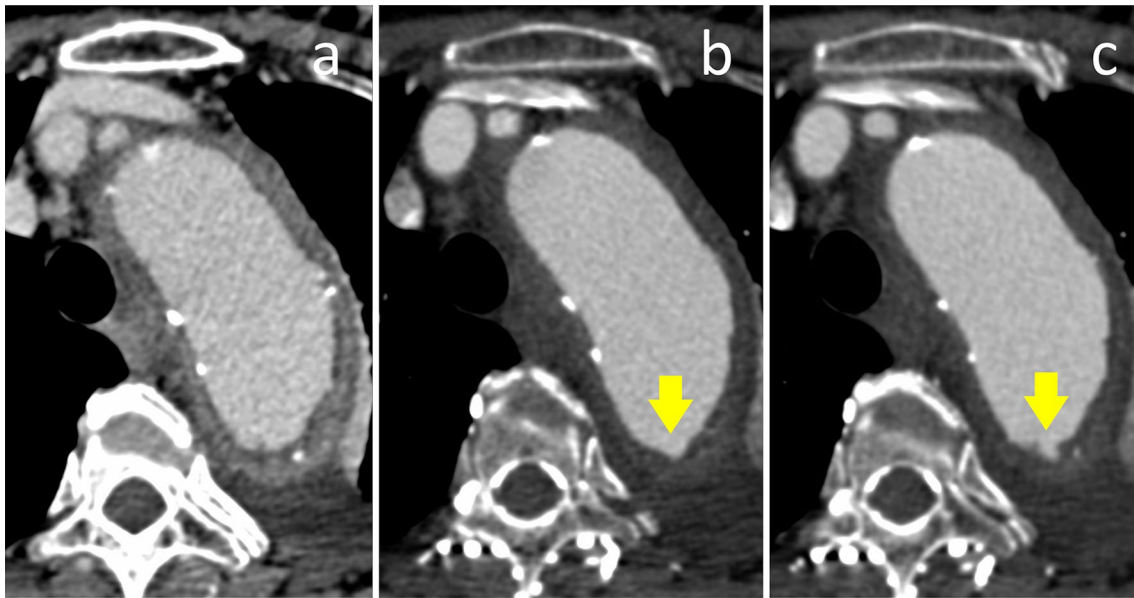
Figures 3 and 4 show a typical case that demonstrates the difference between images acquired via non-ECG-gated CTA and images acquired in the systolic and diastolic phases of ECG-gated CTA. The accuracy, sensitivity, and specificity of the detection of IT and ULP on non-ECG-gated CTA, single-diastolic-phase ECG-gated CTA, and full-phase ECG-gated CTA are shown in Table 2. The true-positive, true-negative, false-positive, and false-negative rates of detecting IT and ULP are shown in Fig. 5.

The accuracies in detecting the IT and ULP using non-ECG-gated CTA, single-diastolic-phase ECG-gated CTA, and full-phase ECG-gated CTA were 79% (95%CI: 85%, 74%), 84% (95%CI: 89%, 79%), and 89% (95%CI: 93%, 85%), respectively. The accuracy of full-phase ECG-gated CTA in detecting the IT and ULP was significantly greater than that of non-ECG-gated CTA ( $P=0.001$ ) and single-diastolic-phase ECG-gated CTA ( $P=0.008$ ). There was no



**Fig. 3** Images show comparison of non-ECG-gated CTA (a) and retrospective ECG-gated CTA at 30%-phase of R–R interval (b) and 70%-phase of R–R interval (c) in a 53-year-old man with acute aortic dissection. In this patient, intimal tear was detected on ECG-gated

CTA in 30%-phase, which was not detected on ECG-gated CTA in 70%-phase and on non-ECG-gated CTA. Presence of intimal tear was confirmed with the operation record



**Fig. 4** Images show comparison of non-ECG-gated CTA (a) and retrospective ECG-gated CTA at 30%-phase of R–R interval (b) and 70%-phase of R–R interval (c) in a 48-year-old man with intramural hematoma. In this patient, ulcer-like projection (ULP) was detected

on ECG-gated CTA in the 30%-phase and 70%-phase, which was not detected on non-ECG-gated CTA. Presence of ULP was confirmed with the follow-up CTA

**Table 2** Detection of the IT and ULP on non-ECG-gated CTA, single-diastolic-phase ECG-gated CTA, and full-phase ECG-gated CTA; all cases, AD and IMH

|                             | Non-ECG-gated CTA | Single-diastolic-phase ECG-gated CTA | Full-phase ECG-gated CTA | <i>P</i> value* | <i>P</i> value <sup>†</sup> | <i>P</i> value <sup>‡</sup> |
|-----------------------------|-------------------|--------------------------------------|--------------------------|-----------------|-----------------------------|-----------------------------|
| All cases ( <i>n</i> = 204) |                   |                                      |                          |                 |                             |                             |
| Accuracy                    | 79 (85, 74)       | 84 (89, 79)                          | 89 (93, 85)              | 0.13            | 0.008                       | 0.001                       |
| Sensitivity                 | 61 (74, 48)       | 64 (78, 52)                          | 87 (96, 78)              |                 |                             |                             |
| Specificity                 | 86 (92, 80)       | 91 (95, 86)                          | 90 (95, 85)              |                 |                             |                             |
| AD ( <i>n</i> = 97)         |                   |                                      |                          |                 |                             |                             |
| Accuracy                    | 79 (87, 71)       | 79 (87, 71)                          | 90 (96, 84)              | 1.0             | 0.020                       | 0.029                       |
| Sensitivity                 | 59 (77, 41)       | 55 (73, 37)                          | 93 (100, 84)             |                 |                             |                             |
| Specificity                 | 88 (96, 81)       | 90 (97, 82)                          | 88 (96, 81)              |                 |                             |                             |
| IMH ( <i>n</i> = 107)       |                   |                                      |                          |                 |                             |                             |
| Accuracy                    | 79 (87, 72)       | 88 (94, 82)                          | 90 (95, 84)              | 0.038           | 0.15                        | 0.016                       |
| Sensitivity                 | 64 (82, 45)       | 76 (93, 59)                          | 80 (93, 59)              |                 |                             |                             |
| Specificity                 | 84 (92, 76)       | 91 (98, 85)                          | 93 (98, 87)              |                 |                             |                             |

Data are presented as percentages with 95% confidence intervals in parentheses, unless otherwise indicated  
*IT* intimal tear, *ULP* ulcer-like projection, *ECG* electrocardiogram, *CTA* CT angiography, *AD* aortic dissection, *IMH* intramural hematoma

\*Non-ECG-gated CTA vs single-diastolic-phase ECG-gated CTA

<sup>†</sup>Single-diastolic-phase ECG-gated CTA vs full-phase ECG-gated CTA

<sup>‡</sup>Non-ECG-gated CTA vs full-phase ECG-gated CTA

significant difference in the accuracy of detecting IT and ULP between non-ECG-gated CTA and single-diastolic-phase ECG-gated CTA ( $P = 0.13$ ).

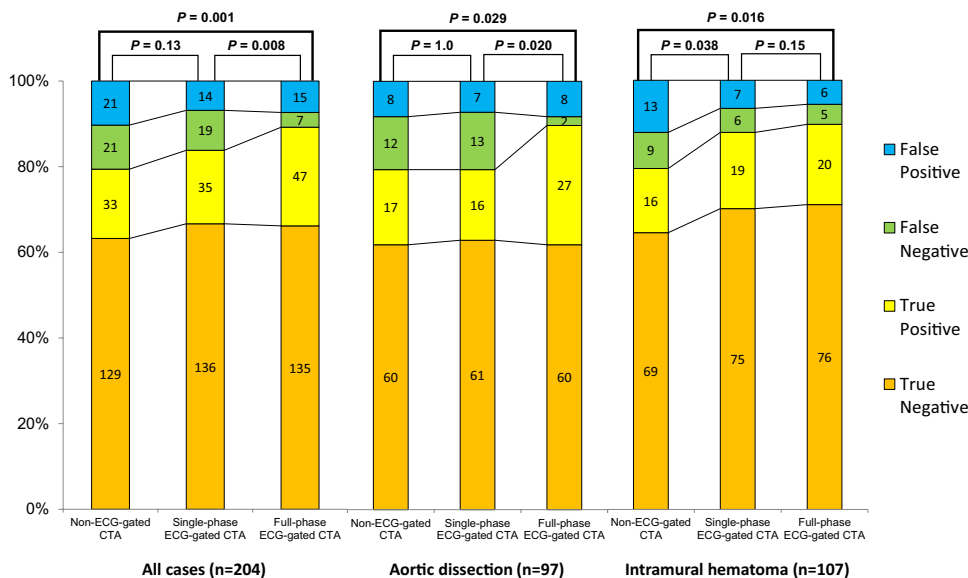
All interobserver agreements were excellent ( $\kappa = 0.83$ ).

### Subgroup analyses of patients with AD and IMH

The accuracy, sensitivity, and specificity of the detection of the IT in AD and ULP in IMH are shown in Table 2.



**Fig. 5** The accuracy to detect IT of AD and ULP of IMH on non-ECG-gated CTA and single-phase ECG-gated CTA and full-phase ECG-gated CTA



The true-positive, true-negative, false-positive, and false-negative rates for the detection of the IT and ULP are shown in Fig. 5.

In AD, the accuracies in detecting the IT using non-ECG-gated CTA, single-diastolic-phase ECG-gated CTA, and full-phase ECG-gated CTA were 79% (95% CI: 87%, 71%), 79% (95% CI: 87%, 71%), and 90% (95% CI: 96%, 84%), respectively. There was no difference in the accuracy of non-ECG-gated CTA compared with single-diastolic-phase ECG-gated CTA. The accuracy of full-phase ECG-gated CTA in detecting the IT was significantly greater than that of non-ECG-gated CTA ( $P=0.029$ ) and single-diastolic-phase ECG-gated CTA ( $P=0.020$ ). In 11 patients, IT was detected only in 20–30% systolic-phase ECG-gated CTA, which was not detected by single-diastolic-phase ECG-gated CTA.

In IMH, the accuracies in detecting the ULP using non-ECG-gated CTA, single-diastolic-phase ECG-gated CTA, and full-phase ECG-gated CTA were 79% (95% CI: 87%, 72%), 88% (95% CI: 94%, 82%), and 90% (95% CI: 95%, 84%), respectively. Compared with non-ECG-gated CTA, both single-diastolic-phase CTA ( $P=0.038$ ) and full-phase ECG-gated CTA ( $P=0.016$ ) were more accurate in detecting the ULP; there was no significant difference in accuracy between single-diastolic-phase CTA and full-phase ECG-gated CTA ( $P=0.15$ ).

**Subgroup analyses in each anatomical segment of patients with AD and IMH**

The accuracy, sensitivity, and specificity for the detection of the IT and ULP in each anatomical region are shown in Table 3. The true-positive, true-negative, false-positive, and false-negative rates for the detection of the IT and ULP in each anatomical region are shown in Fig. 6.

The accuracies of both full-phase ECG-gated CTA and single-diastolic-phase ECG-gated CTA for the detection of the IT and ULP were significantly greater than that of non-ECG-gated CTA in the proximal descending aorta ( $P=0.005$ ,  $0.005$ , respectively). In the ascending aorta and aortic arch, the accuracies of full-phase ECG-gated CTA was greater than that of non-ECG-gated CTA, though the difference was not statistically significant ( $P=0.16$ ,  $0.083$ , respectively).

**Discussion**

Our study revealed that full-phase retrospective ECG-gated CTA was more accurate in detecting the IT in AD and ULP in IMH than non-ECG-gated CTA and single-diastolic-phase ECG-gated CTA.

Recently, the detection of the IT in AD and ULP in IMH has been recognized as an important factor that affects the selection of the treatment including aortic replacement and thoracic endovascular aortic repair and the outcome of patients with AD and IMH. Especially, recent guidelines recommend thoracic endovascular aortic repair as a standard treatment for complicated Stanford type B AD and IMH due to its favorable outcomes [3, 4]. In thoracic endovascular aortic repair, complete sealing of the IT and ULP is necessary to achieve a satisfactory treatment outcome [14]. Therefore, the clinical significance to accurately detect the IT in AD and ULP in IMH has become more important than ever.

Previous studies have reported the usefulness of ECG-gated CTA in the diagnosis of AD. Schertler et al. [26] reported that retrospective ECG-gated CTA was better than non-ECG-gated CT for the assessment of the aorta. Blanke et al. [20] evaluated the image quality and accuracy

**Table 3** Detection of the IT and ULP on non-ECG-gated CTA, single-diastolic-phase ECG-gated CTA, and full-phase ECG-gated CTA in each anatomical segment

|  | Non-ECG-gated CTA | Single-diastolic-phase ECG-gated CTA | Full-phase ECG-gated CTA | <i>P</i> value* | <i>P</i> value <sup>†</sup> | <i>P</i> value <sup>‡</sup> |
|--|-------------------|--------------------------------------|--------------------------|-----------------|-----------------------------|-----------------------------|
| Ascending aorta ( <i>n</i> = 25)           |                   |                                      |                          |                 |                             |                             |
| Accuracy                                   | 72 (90, 54)       | 76 (93, 60)                          | 88 (100, 75)             | 0.65            | 0.18                        | 0.16                        |
| Sensitivity                                | 54 (81, 27)       | 69 (94, 44)                          | 100 (100, 100)           |                 |                             |                             |
| Specificity                                | 92 (100, 76)      | 83 (100, 62)                         | 75 (100, 51)             |                 |                             |                             |
| Aortic arch ( <i>n</i> = 37)               |                   |                                      |                          |                 |                             |                             |
| Accuracy                                   | 86 (98, 75)       | 92 (100, 83)                         | 95 (100, 87)             | 0.31            | 0.31                        | 0.083                       |
| Sensitivity                                | 50 (90, 10)       | 50 (90, 10)                          | 67 (100, 29)             |                 |                             |                             |
| Specificity                                | 94 (100, 85)      | 100 (100, 100)                       | 100 (100, 100)           |                 |                             |                             |
| Proximal descending aorta ( <i>n</i> = 71) |                   |                                      |                          |                 |                             |                             |
| Accuracy                                   | 69 (80, 58)       | 75 (85, 65)                          | 86 (94, 78)              | 0.005           | 0.31                        | 0.005                       |
| Sensitivity                                | 60 (79, 41)       | 56 (75, 37)                          | 84 (98, 70)              |                 |                             |                             |
| Specificity                                | 74 (87, 61)       | 85 (95, 74)                          | 87 (97, 77)              |                 |                             |                             |
| Distal descending aorta ( <i>n</i> = 71)   |                   |                                      |                          |                 |                             |                             |
| Accuracy                                   | 89 (96, 81)       | 92 (98, 85)                          | 90 (97, 83)              | 0.53            | 0.56                        | 0.74                        |
| Sensitivity                                | 80 (100, 55)      | 90 (100, 71)                         | 90 (100, 76)             |                 |                             |                             |
| Specificity                                | 90 (98, 83)       | 92 (99, 85)                          | 90 (98, 83)              |                 |                             |                             |

Data are presented as percentages with 95% confidence intervals, unless otherwise indicated

IT intimal tear, ULP ulcer-like projection, ECG electrocardiogram, CTA CT angiography, AD aortic dissection, IMH intramural hematoma

\*Non-ECG-gated CTA vs single-diastolic-phase ECG-gated CTA

<sup>†</sup>Single-diastolic-phase ECG-gated CTA vs full-phase ECG-gated CTA

<sup>‡</sup>Non-ECG-gated CTA vs full-phase ECG-gated CTA

of clinical diagnosis for thoracic aortic disease including AD and concluded that prospective ECG-gated CTA resulted in less image noise and lower radiation exposure than retrospective ECG-gated CTA. Yang et al. [27] assessed aortic flap motion in AD and concluded that the optimal time at which to perform full-phase ECG-gated CTA is in the cardiac phase at 70% or 75% of the R–R interval. These previous studies reported the usefulness of single-diastolic-phase ECG-gated CTA based on the excellent image quality with less image noise and motion artifacts. However, the accuracy of ECG-gated CTA to detect the IT in AD and ULP in IMH has not been investigated, even though the detection of the IT and ULP significantly affects the treatment strategy. In addition, it still remains unclear whether single-diastolic-phase ECG-gated CTA most adequately depicts the IT and ULP in all cardiac phases. Our study showed that full-phase retrospective ECG-gated CTA had a greater accuracy in detecting the IT in AD and ULP in IMH than non-ECG-gated CTA and single-diastolic-phase ECG-gated CTA. On full-phase ECG-gated CTA, some IT were depicted best in the systolic phase, although the image in the systolic phase showed more motion artifacts than that in the diastolic phase. As shown in Fig. 3, some IT could not be recognized in the diastolic phase; this was probably because of the closure due to the lower pressure gradient between the true and false lumens in the diastolic phase. Therefore, single-diastolic-phase

ECG-gated CTA may potentially miss IT and ULP that can be detected on full-phase ECG-gated CTA.

Full-phase retrospective ECG-gated CTA has the disadvantage of increased radiation exposure in comparison with prospective ECG-gated CTA [20, 21]. Blanke et al. [20] reported that in patients with a body mass index (BMI) less than 25.0 kg/m<sup>2</sup> and patients with a BMI of at least 25, estimated effective doses of retrospective ECG-gated CTA were 4.1 mSv ± 0.7 and 9.5 mSv ± 3.0, respectively. However, the potential improvement in the detection of the IT and ULP may outweigh the disadvantage of increased radiation, as treatment failure may directly lead to patient death in such an emergency situation [2].

### Subgroup analysis

In subgroup analysis of AD, the accuracy of full-phase ECG-gated CTA in detecting the IT and ULP was significantly greater than the other CTA methods. In subgroup analysis of IMH, the accuracy of full-phase ECG-gated CTA in detecting ULP showed significantly greater than that of non-ECG-gated CTA, but showed no difference compared with single-diastolic-phase ECG-gated CTA. The reason why there were no significant difference between full-phase ECG-gated CTA and

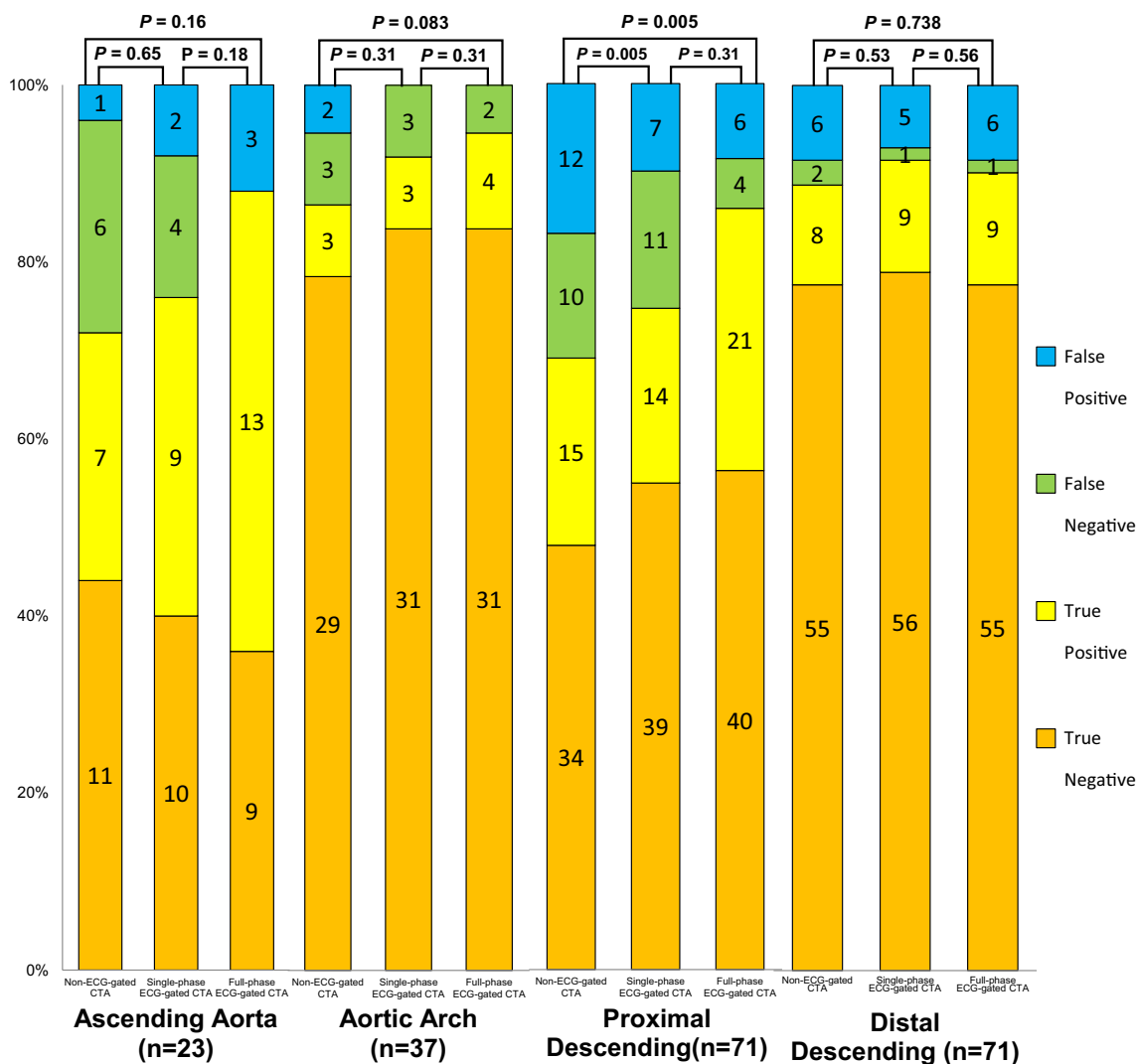


Fig. 6 The accuracy to detect IT of AD and ULP of IMH in each anatomical segment

single-diastolic-phase ECG-gated CTA in IMH may be that the flap motion in IMH is not as large as AD due to false lumen thrombosis.

In subgroup analyses of each anatomical segment, full-phase ECG-gated CTA showed statistically significant higher accuracy in detecting the IT and ULP only in the proximal descending aorta.

This subgroup analysis suggested that full-phase ECG-gated CTA does not always show advantage over other clinical situations. However, in the emergency medicine, full-phase ECG-gated CTA is always recommended to achieve the most accurate detection of the IT and ULP as the diagnosis and the extent of IMH or AD and the location of the IT and ULP cannot be determined at the initial assessment of suspicious acute aortic disease.

**Limitations**

Our study has some limitations. First, the detection of the IT and ULP on non-ECG-gated CTA may have been underestimated, as the non-ECG-gated CTA was performed in a later arterial phase after ECG-gated CTA had been performed. Second, the present study excluded patients who died and could not undergo ECG-gated CTA, which may lead to potential bias in patient selection.



## Conclusion

In conclusion, our study suggests that retrospective ECG-gated CTA improves the accuracy of IT and ULP detection in acute AD compared with non-ECG-gated CTA. Furthermore, full-phase retrospective ECG-gated CTA may detect the IT in AD and ULP in IMH, which may be overlooked in single-diastolic-phase ECG-gated CTA.

**Acknowledgements** We thank members of White Conference on Cardiovascular Radiology for constructive comments for this study.

**Funding** This research did not receive any specific grant from funding agencies in the public, commercial, or not-for-profit sectors.

## Compliance with ethical standards

**Conflict of interest** Hideki Ota and Kei Takase were supported by research grant from Canon Medical Systems, and the other authors report no conflicts of interest.

**Ethical approval** The protocol of this study was received and approved by our institutional ethical committee.

**Ethical statement** All procedures performed in studies involving human participants were in accordance with the ethical standards of the institutional and/or national research committee and with the 1964 Helsinki declaration and its later amendments or comparable ethical standards.

**Open Access** This article is licensed under a Creative Commons Attribution 4.0 International License, which permits use, sharing, adaptation, distribution and reproduction in any medium or format, as long as you give appropriate credit to the original author(s) and the source, provide a link to the Creative Commons licence, and indicate if changes were made. The images or other third party material in this article are included in the article's Creative Commons licence, unless indicated otherwise in a credit line to the material. If material is not included in the article's Creative Commons licence and your intended use is not permitted by statutory regulation or exceeds the permitted use, you will need to obtain permission directly from the copyright holder. To view a copy of this licence, visit <http://creativecommons.org/licenses/by/4.0/>.

## References

- Howard DPJ, Banerjee A, Fairhead JF, et al. Population-based study of incidence and outcome of acute aortic dissection and premorbid risk factor control: 10-year results from the Oxford Vascular Study. *Circulation*. 2013;127(20):2031–7.
- Hagan PG, Nienaber CA, Isselbacher EM, et al. The International Registry of Acute Aortic Dissection (IRAD): new insights into an old disease. *JAMA*. 2000;283(7):897–903.
- Hiratzka LF, Bakris GL, Beckman JA, et al. 2010 ACCF/AHA/AATS/ACR/ASA/SCA/SCAI/SIR/STS/SVM guidelines for the diagnosis and management of patients with Thoracic Aortic Disease: a report of the American College of Cardiology Foundation/American Heart Association Task Force on Practice Guidelines, American Association for Thoracic Surgery, American College of Radiology, American Stroke Association, Society of

- Cardiovascular Anesthesiologists, Society for Cardiovascular Angiography and Interventions, Society of Interventional Radiology, Society of Thoracic Surgeons, and Society for Vascular Medicine. *Circulation*. 2010;121(13):e266–369.
- Erbel R, Aboyans V, Boileau C, et al. 2014 ESC Guidelines on the diagnosis and treatment of aortic diseases: Document covering acute and chronic aortic diseases of the thoracic and abdominal aorta of the adult. The Task Force for the Diagnosis and Treatment of Aortic Diseases of the European Society of Cardiology (ESC). *Eur Heart J*. 2014;35(41):2873–926.
- JCS Joint Working Group. Guidelines for diagnosis and treatment of aortic aneurysm and aortic dissection (JCS 2011). *Circ J*. 2013;77(3):789–828.
- Kazui T, Washiyama N, Bashar AHM, et al. Surgical outcome of acute type A aortic dissection: analysis of risk factors. *Ann Thorac Surg*. 2002;74(1):75–81.
- Tolenaar JL, van Herwaarden JA, Verhagen H, Moll FL, Muhs BE, Trimarchi S. Importance of entry tears in Type B aortic dissection prognosis. *Ann Cardiothorac Surg*. 2013;2(5):631–2.
- Matsuo H. The thrombosed type of aortic dissection—its clinical features and diagnosis. *Int J Angiol*. 1998;7(4):329–34.
- Fumikiyo G, Craig MD, Koji S, et al. Prognosis of aortic intramural hematoma with and without penetrating atherosclerotic ulcer. *Circulation*. 2002;106(3):342–8.
- Chou AS, Ziganshin BA, Charilaou P, Tranquilli M, Rizzo JA, Elefteriades JA. Long-term behavior of aortic intramural hematomas and penetrating ulcers. *J Thorac Cardiovasc Surg*. 2016;151(2):361–373.e1.
- Dake MD, Kato N, Mitchell RS, et al. Endovascular stent-graft placement for the treatment of acute aortic dissection. *N Engl J Med*. 1999;340(20):1546–52.
- EGgebrecht H, Plicht B, Kahlert P, Erbel R. Intramural hematoma and penetrating ulcers: indications to endovascular treatment. *Eur J Vasc Endovasc Surg*. 2009;38(6):659–65.
- Nienaber CA, Kische S, Rousseau-Hervé D, et al. Endovascular repair of type B aortic dissection. *Circ Cardiovasc Interv*. 2013;6(4):407–16.
- Saremi F, Hassani C, Lin LM, et al. Image predictors of treatment outcome after thoracic aortic dissection repair. *RadioGraphics*. 2018;38(7):1949–72.
- Schernthaner RE, Stadler A, Beitzke D, et al. Dose modulated retrospective ECG-gated versus non-gated 64-row CT angiography of the aorta at the same radiation dose: comparison of motion artifacts, diagnostic confidence and signal-to-noise-ratios. *Eur J Radiol*. 2012;81(4):e585–e590590.
- Freeman LA, Young PM, Foley TA, Williamson EE, Bruce CJ, Greason KL. CT and MRI assessment of the aortic root and ascending aorta. *AJR Am J Roentgenol*. 2013;200(6):W581–592.
- Kornberger A, Burck I, Beyrouth HE, Halloum N, Beiras-Fernandez A, Vahl C-F. A low threshold to ECG-gated repeat CTA reduces the risk of false-positive diagnosis of type A dissection in interhospital referrals: a case series study. *Ther Clin Risk Manag*. 2018;14:2019–27.
- Achenbach S, Ulzheimer S, Baum U, et al. Noninvasive coronary angiography by retrospectively ECG-gated multislice spiral CT. *Circulation*. 2000;102(23):2823–8.
- McMahon MA, Squirrell CA. Multidetector CT of aortic dissection: a pictorial review. *RadioGraphics*. 2010;30(2):445–60.
- Blanke P, Bulla S, Baumann T, et al. Thoracic aorta: prospective electrocardiographically triggered CT angiography with dual-source CT—feasibility, image quality, and dose reduction. *Radiology*. 2010;255(1):207–17.
- Wu W, Budovec J, Foley WD. Prospective and retrospective ECG gating for thoracic CT angiography: a comparative study. *Am J Roentgenol*. 2009;193(4):955–63.

22. Sun Z. Coronary CT angiography with prospective ECG-triggering: an effective alternative to invasive coronary angiography. *Cardiovasc Diagn Ther.* 2012;2(1):28–37.
23. Artur E, Armando S, Aida R, et al. Long-term outcome of aortic dissection with patent false lumen. *Circulation.* 2012;125(25):3133–41.
24. Sueyoshi E, Matsuoka Y, Imada T, Okimoto T, Sakamoto I, Hayashi K. New development of an ulcerlike projection in aortic intramural hematoma: CT evaluation. *Radiology.* 2002;224(2):536–41.
25. Ryan JT, Haygood TM, Yamal J-M, et al. The “Memory Effect” for repeated radiologic observations. *Am J Roentgenol.* 2011;197(6):W985–W991.
26. Schertler T, Glücker T, Wildermuth S, Jungius K-P, Marincek B, Boehm T. Comparison of retrospectively ECG-gated and nongated MDCT of the chest in an emergency setting regarding workflow, image quality, and diagnostic certainty. *Emerg Radiol.* 2005;12(1):19–29.
27. Yang S, Li X, Chao B, et al. Abdominal aortic intimal flap motion characterization in acute aortic dissection: assessed with retrospective ECG-gated thoracoabdominal aorta dual-source CT angiography. *PLoS ONE.* 2014;9(2):e87664.

**Publisher's Note** Springer Nature remains neutral with regard to jurisdictional claims in published maps and institutional affiliations.