



Correction to: On rapid multidisciplinary response aspects for Samos 2020 M7.0 earthquake

Michael Foumelis¹ · Costas Papazachos² · Eleftheria Papadimitriou² · Vasileios Karakostas² · Dimitrios Ampatzidis¹ · Giorgos Moschopoulos³ · Anastasios Kostoglou² · Maya Ilieva⁴ · Despina Minos-Minopoulos⁵ · Antonios Mouratidis¹ · Charalambos Kkallas² · Alexandros Chatzipetros⁶

Published online: 28 April 2021

© Institute of Geophysics, Polish Academy of Sciences & Polish Academy of Sciences 2021

Correction to: Acta Geophysica

<https://doi.org/10.1007/s11600-021-00578-6>

The publication of this article unfortunately contained a mistake. The numbering on the x-axis of Fig. 7 was not correct. You can find the correct Fig. 7.

The original article has been corrected.

The original article can be found online at <https://doi.org/10.1007/s11600-021-00578-6>.

✉ Michael Foumelis
mfoumelis@geo.auth.gr

Costas Papazachos
kpapaza@geo.auth.gr

Eleftheria Papadimitriou
ritsa@geo.auth.gr

Vasileios Karakostas
vkarak@geo.auth.gr

Dimitrios Ampatzidis
dampatzi@geo.auth.gr

Giorgos Moschopoulos
moschopoulos@gmail.com

Anastasios Kostoglou
akostogl@geo.auth.gr

Maya Ilieva
maya.ilieva@upwr.edu.pl

Despina Minos-Minopoulos
dminou@culture.gr

Antonios Mouratidis
amourati@auth.gr

Charalambos Kkallas
chkkalla@geo.auth.gr

Alexandros Chatzipetros
ac@geo.auth.gr

- 1 Department of Physical and Environmental Geography, Aristotle University of Thessaloniki (AUTH), 54124 Thessaloniki, Greece
- 2 Department of Geophysics, Aristotle University of Thessaloniki (AUTH), 54124 Thessaloniki, Greece
- 3 Department of Cadaster, Photogrammetry and Cartography, Aristotle University of Thessaloniki (AUTH), 54124 Thessaloniki, Greece
- 4 Institute of Geodesy and Geoinformatics, Wrocław University of Environmental and Life Sciences, 50-357 Wrocław, Poland
- 5 Ephorate of Antiquities of Cyclades, Ministry of Culture and Sports, 10555 Athens, Greece
- 6 Department of Geology, Aristotle University of Thessaloniki (AUTH), 54124 Thessaloniki, Greece

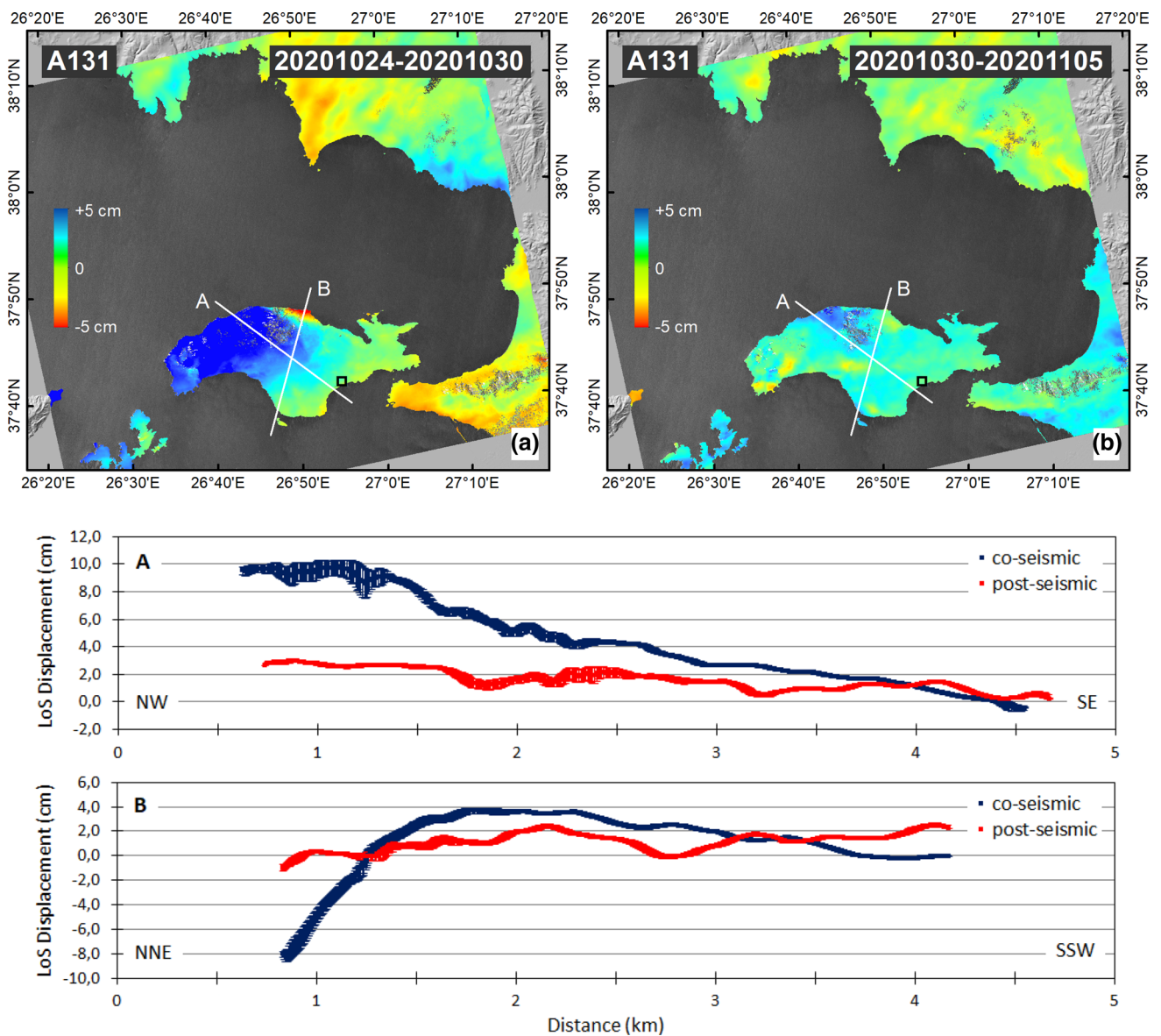


Fig. 7 DInSAR ground displacements along the LoS for **a** the coseismic and **b** the post-seismic (first 5 days) periods. Local reference area is shown as black square. Local reference area is shown as black square. Spatial profiles (A and B) show the variability of motion.

The NW part of Samos is still deforming with a cumulative motion of about 3–4 cm during the following 5 post-seismic days. Local reference area is shown as black square. Contains modified Copernicus Sentinel-1 mission data (2020)