

Mathematical models describing the effects of different tax evasion behaviors

M. L. Bertotti¹  · G. Modanese¹

Received: 21 April 2015 / Accepted: 10 December 2016 / Published online: 26 December 2016
© The Author(s) 2016. This article is published with open access at Springerlink.com

Abstract Microscopic models describing a whole of economic interactions in a closed society are considered. The presence of a tax system combined with a redistribution process is taken into account, as well as the occurrence of tax evasion. In particular, the existence is postulated, in relation to the level of evasion, of different individual taxpayer behaviors. The effects of the mentioned different behaviors on shape and features of the emerging income distribution profile are investigated qualitatively and quantitatively. Numerical solutions show that the Gini inequality index of the total population increases when the evasion level is higher, but does not depend significantly on the evasion spread. For fixed spread, the relative difference between the average incomes of the worst evaders and honest taxpayers increases approximately as a quadratic function of the evasion level.

Keywords Complex systems · Microscopic models · Tax evasion · Income distribution

JEL Classification C02 · C53 · D31 · H26

1 Introduction

The phenomenon of tax evasion represents a serious problem for several countries. Having as a main consequence a reduction of the tax revenue, it negatively affects a

✉ M. L. Bertotti
MariaLetizia.Bertotti@unibz.it
G. Modanese
Giovanni.Modanese@unibz.it

¹ Faculty of Science and Technology, Free University of Bozen-Bolzano, Piazza Università 5, 39100 Bolzano, Italy

correct functioning of the public sector: it hurts the supply of education, health care and services in general. In turn, this contributes, together with other factors, to an increase of economic inequality.

In this paper, we try and look at some aspects of the problem through a mathematical-modelling approach. Specifically, we discuss a kinetic-type model for economic exchanges in a closed society in the presence of taxation and redistribution, within which occurrence of tax evasion to various extents is assumed: we admit the possibility that different citizens pay different percentages of the taxes they should pay.

We emphasize that the illegal practice under consideration involves in fact a large number of interacting agents. These include clearly the evaders themselves, but in addition also all other citizens who, by the situation, are deprived of the access to the benefits deriving from the revenue redistribution. In view of this and of the various levels at which it can take place, tax evasion can be thought of as an example of complex system. With this denomination, systems composed by a high number of heterogeneous units are meant, whose collective and macroscopic behavior is not derivable from the simple summation of the single units properties, but inherently depends on their nonlinear interplay. An interaction-based approach seems to be quite a natural one in the study of economic questions, but it was only during the last decades, especially thanks to the new opportunities offered by the increased computer power, that it started to be pursued. Arguments in favour and related work can be found e.g. in [Aoki \(2002\)](#), [Arthur et al. \(1997\)](#), [Gallegati and Kirman \(2012\)](#), [Kirman \(2006, 2010\)](#), [Landini et al. \(2015\)](#) and [Tesfatsion and Judd \(2006\)](#). The technical tools more frequently employed in connection with this approach are agent-based computational algorithms and simulations, possibly combined with complex networks theory. Also, starting in the mid-1990s an interdisciplinary research field called econophysics has been growing, which explores the dynamical behaviour of economic and financial markets by means of methods taken from statistical mechanics and gas kinetic theory, see e.g. [Chakrabarti and Chakrabarti \(2009\)](#), [Chatterjee et al. \(2005\)](#), [Heinsalu and Patriarca \(2014\)](#) and [Yakovenko and Barkley Rosser \(2009\)](#).

Adopting here a mathematics-supported complex system perspective, we aim at deriving and explaining the emergence of a population's aggregate feature like the income distribution, as a result of the whole of economic exchanges and interactions which take place between the individuals. More specifically, our focus here is on the effects that the heterogeneity of taxpayer behaviors has on the income distribution profiles of the categories of individuals evading to different degrees. To this end we build on our previous work, incorporating suitable additional facets into the models discussed in [Bertotti \(2010\)](#) and [Bertotti and Modanese \(2011, 2012, 2014a, b\)](#). We also emphasize that our goal here is mainly a methodological one: more than perfectly representing real world features, we aim at constructing a tool endowed with explorative ability. Our model in fact has this character. Indeed, the possibility of finding numerical solutions which evolve from differently chosen "initial conditions" and in the presence of differently tuned parameters amounts to the ability to forecast the emergence of different scenarios. In turn, this can give insights as to which policies could be adopted to favour or prevent desired and undesired trends.

The tax evasion process is the object of a large amount of literature. Works among those which involve agent based modeling and simulations include e.g. [Bloomquist](#)

(2006), Crokidakis (2014), Hokamp and Seibold (2014), and Zaklan et al. (2009), to name but a few. Specific aspects therein investigated concern the occurrence of behavioral changes of agent types with diverse moral attitude, due to imitation or also to some audit procedure. In particular, in Hokamp and Seibold (2014) and Zaklan et al. (2009) a variant of the Ising model originally developed within the theory of magnetism is considered. In that context, each spin represents a citizen, which can be either in the tax compliant state $+1$ or in the tax evader state -1 . Citizens undergo transitions from $+1$ to -1 caused by imitation of their nearest neighbours, and from -1 to $+1$ induced by tax audits. Indeed, the consequence of an audit on an evader is assumed to be the fact that she/he will remain honest for a certain number of steps. This approach is helpful for the analysis of evasion phenomena in relation to local interaction and external controls, but not for studying the effect of evasion on the income distribution as we do here.

The paper is organised as follows. In Sect. 2 we describe the model and some of its analytical properties. In Sect. 3 we report and discuss results from a set of numerical solutions. Section 4 contains our conclusions.

2 The model

This section is devoted to a short description of the model proposed. More details on the primary mechanism underlying it can be found in our papers (Bertotti 2010; Bertotti and Modanese 2011, 2012, 2014a, b). We point out however that in Bertotti (2010), Bertotti and Modanese (2011, 2012) the phenomenon of tax evasion was not taken into account, whereas in Bertotti and Modanese (2014a, b) all individuals were assumed to engage to the same degree in a kind of evasion different from that dealt with here.¹ The main novelty here is given by the assumption of the existence of different degrees of evasion.

The totality of individuals (supposed to remain constant in time, in fact during the time period under consideration) is divided into a number n of *classes*, each one characterized by its average income, the average incomes being the positive numbers $r_1 < r_2 < \dots < r_n$, and, in turn, every income class is divided into a number m of *sectors* characterized by possible evasion behaviors.

We denote by x_j^α the fraction of individuals belonging to the j -th income class and to the α -th evasion behavior sector. We will say for brevity that x_j^α is the fraction of individuals of type (j, α) , also called (j, α) -individuals, the number of different groups being $n \times m$.

We suppose here that the evasion behavior of each individual remains constant in time. In contrast, individuals may move through different income classes. The model is formulated by a system of $n \times m$ ordinary differential equations describing the variation in time of x_j^α for $j = 1, \dots, n$ and $\alpha = 1, \dots, m$. Such a variation is the result of direct economic interactions, in which pairs of individuals exchange some

¹ In Bertotti and Modanese (2014a, b) a kind of evasion was considered, which provides advantage to both the participants in a transaction, as it sometimes happens in relation to value added taxes. Here, we consider evasion of individuals who under-declare their income.

money. And is affected as well by the payment of taxes (in some cases, the due taxes and in other cases, partial quotes of them) and by the revenue redistribution, represented in the real world by healthcare, education and services in general. More specifically, the dynamic process is as follows: a whole of interactions between pairs of individuals occur simultaneously: for any h and k in $\{1, \dots, n\}$, for any β and γ in $\{1, \dots, m\}$ individuals belonging to the h -th income class and the β -th evasion sector meet individuals of the k -th income class and the γ -th evasion sector and some money exchange between such pairs takes place. How many of these economic exchanges do we have? If at the considered time the fraction of (h, β) -individuals is x_h^β and the fraction of (k, γ) -individuals is x_k^γ , the number of encounters of these two categories of individuals is the product $x_h^\beta x_k^\gamma$. And any single encounter contributes, albeit to a very small extent, to a change of the fraction of individuals in some income classes. The differential equations contain several parameters, which express for example transition probabilities, the probability that in an encounter between two individuals of different classes the one or the other is paying, the tax rates relative to the different income classes and the percentages of evasion.

They take the form

$$\frac{dx_j^\alpha}{dt} = \sum_{h,k=1}^n \sum_{\beta,\gamma=1}^m \left(C_{(h,\beta);(k,\gamma)}^{(j,\alpha)} + T_{[(h,\beta);(k,\gamma)]}^{(j,\alpha)}(x) \right) x_h^\beta x_k^\gamma - x_j^\alpha \sum_{k=1}^n \sum_{\gamma=1}^m x_k^\gamma, \quad (1)$$

for $j = 1, \dots, n$ and $\alpha = 1, \dots, m$, where

- for any $h, k, j = 1, \dots, n$ and any $\alpha, \beta, \gamma = 1, \dots, m$, the coefficient

$$C_{(h,\beta);(k,\gamma)}^{(j,\alpha)} \in [0, +\infty)$$

expresses the probability that an (h, β) -individual will belong to the group (j, α) as a consequence of a direct interaction with an (k, γ) -individual.

These coefficients satisfy $\sum_{j=1}^n \sum_{\alpha}^m C_{(h,\beta);(k,\gamma)}^{(j,\alpha)} = 1$ for any fixed $(h, \beta), (k, \gamma)$;

- for any $h, k, j = 1, \dots, n$ and any $\alpha, \beta, \gamma = 1, \dots, m$, the function

$$T_{[(h,\beta);(k,\gamma)]}^{(j,\alpha)}(x) : \mathbf{R}^{n \times m} \rightarrow \mathbf{R}$$

expresses the variation in the group (j, α) due to the taxation and redistribution process associated to an interaction between an (h, β) -individual with an (k, γ) -individual.

These functions are continuous and satisfy $\sum_{j=1}^n \sum_{\alpha}^m T_{[(h,\beta);(k,\gamma)]}^{(j,\alpha)}(x) = 0$ for any fixed $(h, \beta), (k, \gamma)$ and $x \in \mathbf{R}^{n \times m}$.

A particular choice of the $C_{(h,\beta);(k,\gamma)}^{(j,\alpha)}$'s and the $T_{[(h,\beta);(k,\gamma)]}^{(j,\alpha)}(x)$'s will be proposed below. Before doing it, we need to introduce and motivate some further terms.

Similarly as in Bertotti and Modanese (2014a, b) we first define for $h, k = 1, \dots, n$ certain coefficients $p_{h,k}$, aimed to specify the probability that in an encounter between

an individual of the h -th income class and one of the k -th class, the one who pays is the former. We take

$$p_{h,k} = \min\{r_h, r_k\}/4r_n,$$

with the exception of the terms $p_{j,j} = r_j/2r_n$ for $j = 2, \dots, n - 1$, $p_{h,1} = r_1/2r_n$ for $h = 2, \dots, n$, $p_{n,k} = r_k/2r_n$ for $k = 1, \dots, n - 1$, $p_{1,k} = 0$ for $k = 1, \dots, n$ and $p_{h,n} = 0$ for $h = 1, \dots, n$. The introduction of these coefficients implies that, with only reference here to the income class (and independently of the evasion sector), for each $h - k$ pair there is

- a probability denoted by $p_{h,k} \in [0, 1]$ that the h -individual will transfer some money to the k -th one,
- a probability $p_{k,h} \in [0, 1]$ that the k -individual will transfer some money to the h -th one,
- a probability $1 - p_{h,k} - p_{k,h} \in [0, 1]$ that the two do not exchange money.

Correspondingly, we are assuming that for any $h \in \{1, \dots, n\}$ and any $k \in \{1, \dots, n\}$ the frequency of payment of individuals of the h -th income class to individuals of the k -th income class is a fixed one. We could call this a compartmental representative agent behavior [see in this connection (Bischi 1998; Tramontana and Gallegati 2010)].

Then, we introduce S (with $S \ll (r_{i+1} - r_i)$ for all $i = 1, \dots, n$), the amount of money that in each direct transaction one individual is supposed to pay to another. The individual who receives the money is expected to pay a part of this as a tax to the government. If this individual belongs to the k -th income class, we may for sake of simplicity assume that he should pay an amount corresponding to $S \tau_k$, τ_k being the tax rate of his income class.

At this point we notice that in a tax compliance case the effect of a direct interaction with an individual of the h -th income class paying S to one of the k -th class and this paying the due tax would be equal to that of the first individual paying an amount $S(1 - \tau_k)$ to the k -th income class one and paying as well a quantity $S \tau_k$ to the government or equivalently, due to the redistribution, to the community of individuals.²

Being interested in a tax evasion case study, we now introduce, beside the tax rates τ_k , some other parameters. For any $\alpha = 1, \dots, m$ let

$$\theta_{ev}(\alpha) \in [0, 1]$$

denote the percentage of the due taxes paid by individuals characterized by an evasion behavior index α . Then, we define for any $k = 1, \dots, n$ and $\alpha = 1, \dots, m$,

$$\theta_{k,\alpha} = \theta_{ev}(\alpha) \tau_k. \tag{2}$$

The quantity $\theta_{k,\alpha}$ in (2) expresses the fraction a (k, α) -individual actually pays as a tax; this percentage depends both on the income class represented by the index k and on the evasion index α .

² Actually, in this model all individuals, but those of the n -th income class benefit from the redistribution. Differently, also individuals of the n -th class could advance to a higher class, but this is not possible.

Example 1 As an example to illustrate the situation, take $m = 3$ and consider three evasion behaviors, described by

$$\theta_{ev}(1) = 1, \quad \theta_{ev}(2) = 1/2, \quad \theta_{ev}(3) = 1/4. \tag{3}$$

In such a case one would have

- individuals in the first sector paying all they should and not evading at all,
- individuals in the second sector paying half of what they should,
- individuals in the third sector paying one quarter of what they should.

The coefficients $C_{(h,\beta);(k,\gamma)}^{(j,\alpha)}$'s can now be defined: the only nonzero ones among them are:

$$C_{(j+1,\alpha);(k,\beta)}^{(j,\alpha)} = p_{j+1,k} \frac{S(1 - \theta_{k,\beta})}{r_{j+1} - r_j}, \tag{4}$$

$$C_{(j,\alpha);(k,\beta)}^{(j,\alpha)} = 1 - p_{k,j} \frac{S(1 - \theta_{j,\alpha})}{r_{j+1} - r_j} - p_{j,k} \frac{S(1 - \theta_{k,\beta})}{r_j - r_{j-1}}, \tag{5}$$

$$C_{(j-1,\alpha);(k,\beta)}^{(j,\alpha)} = p_{k,j-1} \frac{S(1 - \theta_{j-1,\alpha})}{r_j - r_{j-1}}. \tag{6}$$

We point out that

- in (4), $C_{(j+1,\alpha);(k,\beta)}^{(j,\alpha)}$ is defined only for $j \leq n - 1$ and $k \leq n - 1$;
- in the expression of $C_{(j,\alpha);(k,\beta)}^{(j,\alpha)}$ in (5), the second addendum is present only for $j \leq n - 1$ and $k \geq 2$, whereas the third addendum is present only for $j \geq 2$ and $k \leq n - 1$;
- in (4), $C_{(j-1,\alpha);(k,\beta)}^{(j,\alpha)}$ is defined only for $j \geq 2$ and $k \geq 2$;
- in (4)–(6), the indices α and β take any value in $\{1, \dots, m\}$.

We also emphasize that the coefficients $p_{h,k}$ enter in the formulae (4)–(6) in such a way that their effect can be also interpreted as weighting the amount of money exchanged. In other words, the situation is the same one would have assuming the frequency of payment of individuals independent on the income class, but with the amount of money paid in each transaction by individuals of the h -th income class to individuals of the k -th income class equal to $p_{h,k}S$ instead of S . The specific choice of $p_{h,k}$ adopted here is suggested by the phenomenological observation that typically poor people pay and earn less than rich people.

We take the functions $T_{[(h,\beta);(k,\gamma)]}^{(j,\alpha)}(x)$ as

$$T_{[(h,\beta);(k,\gamma)]}^{(j,\alpha)}(x) = \frac{p_{h,k} S \theta_{k,\gamma}}{\sum_{i=1}^n \sum_{\lambda=1}^m x_i^\lambda} \left(\frac{x_{j-1}^\alpha}{(r_j - r_{j-1})} - \frac{x_j^\alpha}{(r_{j+1} - r_j)} \right) + p_{h,k} S \theta_{k,\gamma} \left(\frac{\delta_{h,j+1} \delta_{\alpha,\beta}}{r_h - r_j} - \frac{\delta_{h,j} \delta_{\alpha,\beta}}{r_h - r_{j-1}} \right) \frac{\sum_{i=1}^{n-1} \sum_{\lambda=1}^m x_i^\lambda}{\sum_{i=1}^n \sum_{\lambda=1}^m x_i^\lambda}, \tag{7}$$

with $\delta_{i,j}$ denoting the *Kronecker delta*. In the r.h.s. of (7), $h > 1$ and the terms involving the index $j - 1$ [respectively, $j + 1$] are effectively present only for $j - 1 \geq 1$ [respectively, $j + 1 \leq n$]. The indices α, β and γ take any value in $\{1, \dots, m\}$.

Remark 1 It may be helpful stressing here the fact that, even if the equations (1) describe migrations of aggregate fractions of individuals, in fact a probabilistic micro-interaction modelling underlies the dynamical process expressed by these equations.

The right hand sides of (1) contain quadratic (and other nonlinear) terms, exactly because they give account of a large number of pairwise interactions (and, through the taxation and redistribution process, also of interactions involving more individuals). For example, the origin of the coefficients $C_{(h,\beta);(k,\gamma)}^{(j,\alpha)}$ (which refer to direct money exchange) is the following. The interaction between an (h, α) -individual and a (k, β) -individual with the (h, α) -individual paying, produces the variation of the fraction of individuals in some groups (in general, four). Indeed, the (h, α) -individual becomes a little bit poorer, inducing a partial migration from the h -th income class to the $(h - 1)$ -th one and the (k, β) -individual becomes a little bit richer, inducing a partial migration from the k -th income class to the $(k + 1)$ -th one. The mentioned variation in the four groups is described through the coefficients:

$$\begin{aligned}
 b_{(h,\alpha);(k,\beta)}^{(h-1,\alpha)} &= p_{h,k} S (1 - \theta_{k,\beta}) \frac{1}{r_h - r_{h-1}} , \\
 b_{(h,\alpha);(k,\beta)}^{(h,\alpha)} &= -p_{h,k} S (1 - \theta_{k,\beta}) \frac{1}{r_h - r_{h-1}} , \\
 b_{(k,\beta);(h,\alpha)}^{(k+1,\beta)} &= p_{h,k} S (1 - \theta_{k,\beta}) \frac{1}{r_{k+1} - r_k} , \\
 b_{(k,\beta);(h,\alpha)}^{(k,\beta)} &= -p_{h,k} S (1 - \theta_{k,\beta}) \frac{1}{r_{k+1} - r_k} .
 \end{aligned} \tag{8}$$

The coefficients in the formulae (4)–(6), namely those appearing in the equation (1) and which refer to the (j, α) group, are then obtained from these, observing that each probability $C_{(h,\beta);(k,\gamma)}^{(j,\alpha)}$ can be written as a sum

$$C_{(h,\beta);(k,\gamma)}^{(j,\alpha)} = a_{(h,\beta);(k,\gamma)}^{(j,\alpha)} + b_{(h,\beta);(k,\gamma)}^{(j,\alpha)} ,$$

where the “absence-of-variation term” $a_{(h,\beta);(k,\gamma)}^{(j,\alpha)} = 1$ only if $j = h$ and $\alpha = \beta$, independently of (k, γ) , and the $b_{(h,\beta);(k,\gamma)}^{(j,\alpha)}$ are as in (8) (see Bertotti (2010) for a similar discussion in a simpler case).

We also observe that the structure of the $C_{(h,\beta);(k,\gamma)}^{(j,\alpha)}$ and the $T_{[(h,\beta);(k,\gamma)]}^{(j,\alpha)}(x)$ in (4)–(7) is determined by the conservation requirements of the global mechanism. The stochastic character they enjoy is due to the presence of the coefficients $p_{h,k}$ which can be defined with some degrees of freedom. It is in view of the coefficients $p_{h,k}$ that we call this a *probabilistic micro-interaction* modelling. We do not know who exactly is going to interact with whom: we only know at a probabilistic level how often individuals in a group interact with individuals of another group.

Of course, assuming that each individual of the h -th income class has the same probability $p_{h,k}$ of paying in an encounter with an individual of the k -th class corresponds to attribute the same behavior (intended as attitude to pay) to all pairs of individuals of the same two specific classes. This reminds a mean-field approach, see e.g. Aoki (2002) and Aoki and Yoshikawa (2007). But, in fact, the underlying modelling just described provides our approach with a different characterization.³ \diamond

By suitably adapting proofs, which are relative to a previous, less general, version of the model and can be found in Bertotti (2010), one may check that the following properties, amounting to conservation in time of both the number of individuals and the global income as well, hold true.

Property 1 For any initial condition $x_0 = \{x_{0_j}^\alpha\}_{j=1,\dots,n;\alpha=1,\dots,m}$, for which $x_{0_j}^\alpha \geq 0$ for any $j = 1, \dots, n$ and $\alpha = 1, \dots, m$, and $\sum_{j=1}^n \sum_{\alpha=1}^m x_{0_j}^\alpha = 1$, a unique solution $x(t) = \{x_{0_j}^\alpha(t)\}_{j=1,\dots,n;\alpha=1,\dots,m}$ of (1) exists, which is defined for all $t \in [0, +\infty)$, satisfies $x(0) = x_0$ and also

$$\begin{aligned}
 &x_j^\alpha(t) \geq 0 \quad \text{for } j = 1, \dots, n \text{ and } \alpha = 1, \dots, m \\
 &\quad \text{and} \\
 &\sum_{j=1}^n \sum_{\alpha=1}^m x_j^\alpha(t) = 1 \quad \text{for all } t \geq 0.
 \end{aligned}
 \tag{9}$$

As a consequence of this property, the expressions of the $T_{[(h,\beta);(k,\gamma)]}^{(j,\alpha)}(x)$'s in (7) somehow simplify and the right hand sides of system (1) turn out to be in fact polynomials of degree 3.

Property 2 The scalar function $\mu(x) = \sum_{j=1}^n r_j \sum_{\alpha=1}^m x_j^\alpha$ remains constant along each solution of system (1).

In addition, the running of several numerical solutions provides evidence of the following fact.

Property 3 If the parameters of the model (r_1, \dots, r_n, S , the τ_k 's, the $\theta_{ev}(\alpha)$'s) and also the fraction of individuals with different behavior⁴ are fixed, if $\mu \in [r_1, r_n]$ is fixed,

³ In the Boltzmann approach to statistical mechanics, to which our approach is inspired, the variables are described by means of a probability distribution function. The Maxwell–Boltzmann statistics gives the expected number of particles in a given volume of the phase space. Space and velocity are continuous variables. The discretized Boltzmann approach is somewhat more manageable, because it groups together particles with the same velocity or, in the socio-economic version, individuals in the same income class. Integrals are then replaced by sums and the number of admissible velocities or classes can be increased as needed to ensure the precision required in any specific case. In comparison to the discretized Boltzmann, the mean-field approach entails a loss of information, since the evolution equation for each individual implies that it interacts with an average value of all the others, and the whole evolution process is self-consistent. In the discretized Boltzmann approach and in our model the interactions are microscopic and occur between all individuals. Finally, if one compares a Boltzmann approach with an agent-based simulation, it is fair to say that the Boltzmann agents have properties typical of deterministic particles, while the behavior of simulated agents can be much more flexible. However, the Boltzmann approach offers the advantage of a closed mathematical formulation, independent from the software.

⁴ The fraction of individuals with a specific evasion behavior is assumed here to be the same in each income class.

then the solutions $x(t) = \{x_{0j}^\alpha(t)\}_{j=1,\dots,n;\alpha=1,\dots,m}$ evolving from initial conditions $x_0 = \{x_{0j}^\alpha\}_{j=1,\dots,n;\alpha=1,\dots,m}$, for which $x_{0j}^\alpha \geq 0$ for any $j = 1, \dots, n$ and $\alpha = 1, \dots, m$, and which satisfy

$$\sum_{j=1}^n \sum_{\alpha=1}^m x_{0j}^\alpha = 1 \quad \text{and} \quad \sum_{j=1}^n r_j \sum_{\alpha=1}^m x_{0j}^\alpha = \mu$$

tend asymptotically to a same stationary distribution as $t \rightarrow +\infty$.

3 The evidence from numerical solutions

Our specific interest here is to analyze the income evolution in the long time limit of groups of individuals characterized by different behaviors. In other words, whereas our previous investigation in Bertotti and Modanese (2014a, b) was especially addressed to detect the effects of (a different kind of) tax evasion on the population as a whole, here we also focus on the evasion effects on the different mentioned groups.

Finding analytical solutions of the nonlinear differential equations (1) is of course hopeless. However, numerical solutions provide sufficient information. In order to obtain them, one has to first fix several parameters. We take here $n = 9, m = 3, S = 1, r_j = 10j$ for $j = 1, \dots, n$ and assume tax rates increasing from a minimal one, τ_{min} , to a maximal one, τ_{max} , according to a progressive taxation system, as given by

$$\tau_j = \tau_{min} + \frac{j - 1}{n - 1} (\tau_{max} - \tau_{min}), \quad \text{for } j = 1, \dots, n. \tag{10}$$

Still, the values of τ_{min}, τ_{max} and $\theta_{ev}(\alpha)$ for $\alpha = 1, \dots, m$ remain to be chosen.

Each time we explore aggregate effects in the asymptotic stationary income distribution of the population and compare situations of tax compliance and tax evasion, we find that evasion leads to an increment in the number of individuals in the poorest and in the richest classes, at the detriment of the middle classes. Figure 1 illustrates the typical situation. In Bertotti and Modanese (2014a, b) we have shown that tax evasion has in general the effect to increase economic inequality, as measured for instance by the Gini index. We have also studied situations in which evasion grows in response to an increase of the tax rates, finding an optimal “compromise” characterized by minimum inequality. These results were obtained in conditions of homogeneous evasion rates.

Assume now, to fix ideas, that the evasion behaviors are as in (3) in Example 1 and that each of them is present in one third of the population.⁵ Accordingly, in each income class one third of the individuals pays all due taxes, one third pays half of them and one third pays one quarter of them. Not only can we obtain information on the aggregate shape of the asymptotic income distribution. We also get a more detailed picture of the effects of tax evasion within different behavioural sectors. Specifically,

⁵ The choice of this particular subdivision is motivated by the desire to derive a balanced comparison of the evolution of the different groups.

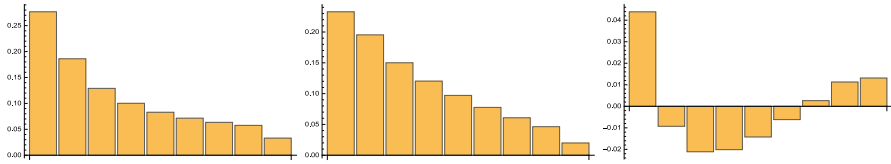


Fig. 1 Collective effect of tax evasion. The asymptotic income distribution on the *left* refers to a case with tax evasion, the one in the *middle* refers to a tax compliance case with the same initial conditions and the *panel on the right* displays the difference of the fraction of individuals in the various classes in the first and second case. Note that the figures are scaled differently

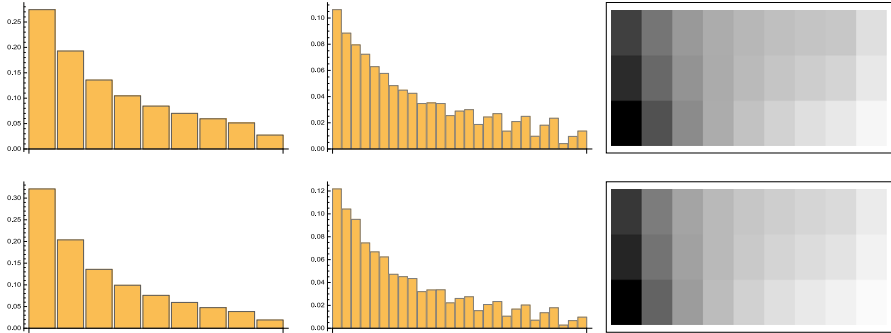


Fig. 2 In the two rows the asymptotic income distribution referring to two different initial data are plotted. The *two panels on the left* display the distributions by income classes. The histograms in the *central panels* represent the sequence for each income class of three evasion behavior sectors with $\theta_{ev}(1) = 1, 1/2, 1/4$. The panels on the *right* provide an alternative bi-dimensional representation, in which the sectors can also be distinguished

it turns out that in low income classes the numbers of “honest individuals”, “half-evaders” and “three-quarters evaders”, counted in this order, are decreasing from the largest to the smallest, while the situation is reversed in the high income classes. A graphic illustration of this is provided by the Fig. 2.

In order to understand which variations of the model parameters can best represent some real situations, and what results we can expect, we can compare situations in which evasion is widespread with situations in which it is confined only to a part of the population, the total evasion level being the same. By total evasion level we denote the total fraction of tax payments which is eluded, summed over all sectors of the population. With three sectors, for instance, we can consider the two following situations, which have both total evasion level $1/6$, but exhibit respectively widespread and concentrated evasion:

1. one sector is honest, with $\theta = \theta_{ev} = 1$, i.e. 100% of taxes are paid, while the other two sectors are slightly dishonest, with $\theta = 0.75$, i.e. 75% of taxes are paid;
2. two sectors are honest and the third is quite dishonest, with $\theta = 0.5$.

We wonder whether the Gini index is significantly different in the two cases, or in other words, if evasion has a different impact on inequality when it is widespread or confined to a part of the population. Furthermore, we might wonder whether the partial Gini indices of the behavioral sectors are substantially different from that of the

Table 1 Percentage gap d between the average income of the worst evaders and the average income of honest taxpayers in dependence of the total evasion level η

Tot. % evasion level η	% of due taxes paid in the three sectors	% income gap d
5	100, 95, 90	3.5
10	100, 90, 80	6.8
15	100, 85, 70	10.8
20	100, 80, 60	14.6
25	100, 75, 50	18.1
30	100, 70, 40	21.5
40	100, 60, 20	31.8
50	100, 50, 0	41.8

A gradual spread of evasion in three behavioral sectors is assumed. For instance, when the total evasion level is 10% (the first sector pays 100% of the due taxes, the second pays 90% and the third 80%), the average income of the third sector is 6.8% larger than the income of the first sector. The applied tax rates grow linearly with income between $\tau_{min} = 10\%$ and $\tau_{max} = 45\%$. The dependence $d(\eta)$ can be approx. fitted as $d(\eta) \simeq 0.42\eta^2 + 0.62\eta$

total population, for instance in the sense that among evaders there is more inequality than among honest taxpayers. The numerical solutions show, however, that in all these cases the Gini index does not exhibit any significant variations, depending only on the total evasion level.

The introduction of behavioral sectors into the model allows to observe another important effect, namely the appearance of a clear difference between the average incomes of honest taxpayers and tax evaders. It is already apparent from the income histograms in Fig. 2 that, as expected, tax evaders tend to get richer than honest taxpayers: the bars representing the lowest-income classes clearly show a larger share of honest people, while the opposite happens for the highest-income classes, where more evaders are found. It is interesting to give a quantitative estimate of this difference and to study its dependence on the evasion level.

To this end, let us consider the relative difference d between the average income of the worst evaders and the average income of the honest taxpayers: $d = (\mu_m - \mu_1) / \mu_1$. This relative difference is quite large, typically of the order of 10 to 20% in the histograms of Figs. 1 and 2. In order to evaluate its dependence on the evasion level, we need to choose a fixed and reasonable “evasion spread” pattern.

We can proceed as follows: suppose that the first sector is always honest ($\theta = 1$), the second sector has $\theta = 1 - \eta$ (evasion level η), and the third sector has $\theta = 1 - 2\eta$ (evasion level 2η). The total evasion level is $3\eta/3 = \eta$. Let us gradually increase η , from 0 to 0.5, and compute $d(\eta)$. Results are shown in Table 1.

The dependence is manifestly non-linear, showing that the phenomenon is complex and its interpretation not simple. In fact, an increase in the evasion level affects the income distribution in at least two ways: (a) through direct interactions, because evaders gain systematically more from any interaction; (b) through indirect interactions (tax redistribution), because when tax evaders tend to outnumber honest taxpayers in the higher-income classes, which should pay higher tax rates, the total tax collection is

diminished. It is not obvious, however, that this diminution should further increase the difference $d(\eta)$ defined above, since in the present version of the model redistribution is uniform. In the version with heterogeneous redistribution Bertotti and Modanese (2015) we could take into account more subtle real effects: for instance, supposing that welfare provisions are means-tested, we could assign them based on the tax paid, instead than on the real income. This is known to give a further unjust and detestable advantage to tax evaders. We plan to address these issues in future work.

4 Concluding remarks and further perspectives

In this paper, a kinetic-type model describing economic interactions, taxation and redistribution in a closed society is discussed. The focus is on the effects produced by tax evasion by individuals who under-declare their income in different measure.

The model suggests the following considerations. From the sound point of view of individuals who care for society, tax compliance plays an important role towards the overcoming of economic inequality. From the point of view of selfish individuals, the probability of improving their own economic status is higher when evading. The result is not surprising. Certainly, it has to be noticed that no audit actions or punishment are taken here into consideration. Incorporating them in the model and investigating possible impacts would be an interesting point to explore in future work.

Another, related, point which deserves further work is the necessity of inclusion into the model of possible changes of the behavioral taxpayer attitudes. Of course, in real life, the propensity of individuals to be compliant or non compliant does not remain always constant in time: in particular, it can be influenced by the behavior of others and by specific experiences (such as fines) with fiscal agencies. Combining into the model the treatment of the money distributional aspect with behavioral and psychological factors remains a major challenge to be faced in the future. As well, the possibility of bankruptcy and production should be taken into account in an effort of an improved realism.

In this connection and in conclusion, we like to emphasize that our goal here has been mainly a methodological one. The interest of this model (possibly bound to be further enhanced) lies in our opinion in its possible explorative use: simulations corresponding to different conceivable parameters allow to understand and forecast the emergence of different scenarios and could possibly suggest policies addressed to favour desired trends or prevent undesired ones.

Acknowledgements We thank the referee for a very careful review and several constructive comments.

Open Access This article is distributed under the terms of the Creative Commons Attribution 4.0 International License (<http://creativecommons.org/licenses/by/4.0/>), which permits unrestricted use, distribution, and reproduction in any medium, provided you give appropriate credit to the original author(s) and the source, provide a link to the Creative Commons license, and indicate if changes were made.

References

Aoki M (2002) Modeling aggregate behaviour and fluctuations in economics: stochastic views of interacting agents. Cambridge University Press, Cambridge

- Aoki M, Yoshikawa H (2007) Reconstructing macroeconomics. A perspective from statistical physics and combinatorial stochastic processes. Cambridge University Press, Cambridge
- Arthur WB, Durlauf S, Lane DA (1997) Process and the emergence in the economy. In: Arthur WB, Durlauf S, Lane DA (eds) The economy as an evolving complex system II. Addison-Wesley, Reading, pp 2–14
- Bertotti ML (2010) Modelling taxation and redistribution: a discrete active particle kinetic approach. *Appl Math Comput* 217:752–762
- Bertotti ML, Modanese G (2011) From microscopic taxation and redistribution models to macroscopic income distributions. *Phys A* 390:3782–3793
- Bertotti ML, Modanese G (2012) Exploiting the flexibility of a family of models for taxation and redistribution. *Eur Phys J B* 85:261
- Bertotti ML, Modanese G (2014) Mathematical models for socio-economic problems. In: Celletti A, Locatelli U, Ruggeri T, Strickland E (eds) Mathematical models and methods for planet earth. Springer INDAM Series 6, Cham, pp 124–134
- Bertotti ML, Modanese G (2014) Micro to macro models for income distribution in the absence and in the presence of tax evasion. *Appl Math Comput* 244:836–846
- Bertotti ML, Modanese G (2015) Microscopic models for welfare measures addressing a reduction of economic inequality. *Complexity* 21(6):89–98
- Bischi GI (1998) Compartmental analysis of economic systems with heterogeneous agents: an introduction. In: Kirman A, Gallegati M (eds) Beyond the representative agent. Elgar Pub. Co, Cheltenham, pp 181–214
- Bloomquist KM (2006) A comparison of agent-based models of income tax evasion. *Soc Sci Comput Rev* 24:411–425
- Chakrabarti AS, Chakrabarti BK (2009) Microeconomics of the ideal gas like market models. *Phys A* 388:4151–4158
- Chatterjee A, Yarlagadda S, Chakrabarti BK (eds) (2005) Econophysics of wealth distributions, vol 248. Springer, Mailand
- Crokidakis N (2014) A three-state kinetic agent-based model to analyse tax evasion dynamics. *Phys A* 414:321–328
- Gallegati M, Kirman A (2012) Reconstructing economics: agent based models and complexity. *Complex Econ* 1:5–31
- Heinsalu E, Patriarca M (2014) Kinetic models of immediate exchange. *Eur Phys J B* 87:170
- Hokamp S, Seibold G (2014) Tax compliance and public goods provision. An agent-based econophysics approach. *CEJEME* 6:217–236
- Kirman A (2006) Heterogeneity in economics. *J Econ Interact Coord* 1:89–117
- Kirman A (2010) Complex economics: individual and collective rationality, vol 288. Routledge, London
- Landini S, Gallegati M, Stiglitz JE (2015) Economies with heterogeneous interacting learning agents. *J Econ Interact Coord* 10:91–118
- Pareto V, (1896-7) *Course d'Economie Politique*, Vol. I 430, Vol. II 426, Rouge, Lausanne
- Tesfatsion L, Judd KL (eds) (2006) *Handbook of Computational economics, Volume 2: agent-based computational economics*, vol 904. North-Holland, Amsterdam
- Tramontana F, Gallegati M (2010) Economics as a compartmental system: a simple macroeconomic example. Working Papers EMS # 2010/11 Università degli Studi di Urbino Carlo Bo
- Yakovenko VM, Barkley Rosser J Jr (2009) Colloquium: statistical mechanics of money, wealth, and income. *Rev Mod Phys* 81:1703–1725
- Zaklan G, Westerhoff F, Stauffer D (2009) Analysing tax evasion dynamics via the Ising model. *J Econ Interact Coord* 4:1–14