



The variation and trends of nitrogen cycling and nitrogen isotope composition in tree rings: the potential for fingerprinting climate extremes and bushfires

Amal Succarie¹ · Zhihong Xu¹ · Wenjie Wang^{2,3}

Received: 9 March 2022 / Accepted: 17 June 2022 / Published online: 20 July 2022
© The Author(s) 2022

Abstract

Purpose Climate extremes, such as droughts and floods, have become intensified and more frequent due to intensifying climate change. Increased atmospheric carbon dioxide (CO₂) and warming-induced water limitation, as well as climate extremes, may alter carbon (C) and nitrogen (N) cycling in forest ecosystems. This provides a brief review of stable nitrogen isotopic composition ($\delta^{15}\text{N}$) in tree ring in relation to climate extremes and bushfires in context of N availability and losses in forest ecosystems.

Material and methods Tree rings were extracted from four *Pinus sylvestris* and four *Larix gmelinii* sample trees, located in a boreal plantation forest of Mohe City, Heilongjiang Province, China. Tree rings were measured to obtain mean annual basal area increment (BAI), while tree ring $\delta^{15}\text{N}$ and total N concentrations were measured on mass spectrometer at 3-year intervals. The tree ring $\delta^{15}\text{N}$ data were related to possible climate extremes and bushfires. A brief review of the relevant literature was also undertaken to support our preliminary research findings.

Results and discussion Globally, increasing atmospheric CO₂ concentration and water limitations have led to a warmer-drier climate. This has also been associated with increases of climate extremes such as drought and floods as well as bushfires. These extremes have been recorded with detrimental effects on plant and soil structures within forest ecosystems and play an important role in regulating N availability and losses in forest ecosystems. Studies of N deposition within forest ecosystems using soil and plant $\delta^{15}\text{N}$ also showed that N losses under various climate extremes can occur through direct changes in N cycling, such as increasing soil nitrification and denitrification or leaching. It is highlighted that tree rings $\delta^{15}\text{N}$ has the potential to fingerprint the intensity and frequency of climate extremes and bushfires in the forest ecosystems, but more such tree ring $\delta^{15}\text{N}$ research needs to be done in diversified forest ecosystems to confirm the potential of using tree ring $\delta^{15}\text{N}$ for quantifying the frequency and intensity of climate extremes and bushfires at both regional and global scale.

Conclusion The variation and trend of $\delta^{15}\text{N}$ in the soil–plant–climate systems are closely linked to the N cycling in forest ecosystems, and tree ring $\delta^{15}\text{N}$ has the great potential to fingerprint both intensity and frequency of climate extremes such as drought and floods as well as bushfires.

Keywords Bushfires · Climate extremes · Nitrogen · Tree rings $\delta^{15}\text{N}$ · Floods · Drought

Responsible editor: Hailong Wang

✉ Amal Succarie
amal.succarie@griffithuni.edu.au

✉ Zhihong Xu
zhihong.xu@griffith.edu.au

¹ Centre of Planetary Health and Food Security, School Environment and Science, Griffith University, Nathan, QLD 4111, Australia

² Key Laboratory of Plant Ecology, Ministry of Education, Northeast Forestry University, Heilongjiang Province, Harbin 150040, China

³ Urban Forests and Wetlands Group, Northeast Institute of Geography and Agroecology, Chinese Academy of Sciences, Jilin Province 130102, China

1 Introduction

Climate extremes, noted to be a necessity for the balance of the Earth's atmosphere, have become more frequent and intensified in their destructive behaviour due to global climate change (Stewart et al. 2021). Climate extremes, such as droughts and floods, potentially alter carbon (C) and nitrogen (N) cycling in terrestrial ecosystems at profoundly different timescales (Xu et al. 2009; Bai et al. 2015a, b; Choi et al. 2020). Hence, increasing environmental stress exists within forest ecosystems, decreasing plant and soil health (Stewart et al. 2021). Extreme events, such as heatwaves, floods and bushfires, can be short in duration but can have long-lasting impacts upon ecosystem function and services (Li et al. 2019, 2020a, 2021a, b; Peguero et al. 2021; Stewart et al. 2021), shaping the abundance and distribution of plant communities (Girardin 2009; Li et al. 2022a, b). Increasing temperatures and heatwaves lead to increasing intensity and frequency of droughts, which can cause a warmer and drier environment, resulting in increases in bushfires and lightning frequency (Girardin 2009; Li et al. 2021a). Increasing temperatures and heatwaves together with increased droughts have been related to tree mortality events (Li et al. 2021b, 2022b). Drought stress is a large component of global crisis in forest and plant health risks due to the lack of water availability, leading to plant dieback at a regional and global scale (Peguero et al. 2021). Flooding is also an extreme event that is detrimental to ecosystem environments, but flooding tends to increase once drought season has been completed, thus indicating seasonal or annual variations in above or below average water availability. Seasonal and annual variations in temperature and soil moisture are important determinant of growth success within plants and changes in growth ability can lead to variations of landscape distributions, physiological threshold, photosynthesis function and C and N cycling (Li et al. 2019, 2020a, b, 2021a, b, c, 2022a, b, c).

Changes and shifts in C cycle due to climate extremes have been extensively studied (Chen et al. 2008; Li et al. 2019, 2020a, 2021a, b). The N cycle is closely linked to both C and hydrological cycle (Chen et al. 2008; Li et al. 2020b, 2022c). The N₂ makes up 78% of the Earth's atmosphere (Chen et al. 2008; Bai et al. 2012; Choi et al. 2020). The reactive N depositions have contributed to the currently increasing natural CO₂ sinks in some forest ecosystems. This anthropogenic disturbance has contributed to the current changes in N and C cycles within the terrestrial ecosystems (Chen et al. 2008; Bai et al. 2012; Choi et al. 2020). Terrestrial ecosystems receive N from biological N fixation process (Guinto et al. 2000; Reverchon et al. 2012, 2020). The increases of fossil fuels and other anthropogenic uses

have led to climate change thus increasing climate extremes (Bai et al. 2015a, b; Peguero et al. 2021). This contribution can vary depending on the biotic and abiotic factors. Biotic factors include species, ages and plant components, while abiotic factors include climate change and climate extremes such as drought, floods and bushfires, having different effects on N availability and losses within terrestrial ecosystems (Rui et al. 2011; Ibell et al. 2013).

The ¹⁵N natural abundance ($\delta^{15}\text{N}$) can provide an index of ecosystem N cycling (Yoshida 1988; Sun et al. 2010; Rui et al. 2011; Ibell et al. 2013; Bai et al. 2015a). The ratio of N input or output relative to the N pools has been analysed by changes in plant and soil $\delta^{15}\text{N}$ (Yoshida 1988; Wang et al. 2015, 2020a, b, c; Choi et al. 2020; Succarie et al. 2020). Current research has also used the $\delta^{15}\text{N}$ signature as an index of N losses with interaction of bushfires, floods and drought within the soil and plant ecosystems. Differences in soil and plant $\delta^{15}\text{N}$ are closely associated with the N cycling processes such as N mineralisation, nitrification and denitrification (Handley et al. 1999; Houlton et al. 2007; Wang et al. 2015, 2020a, b, c; Craine et al. 2018; Nessa et al. 2021). The use of $\delta^{15}\text{N}$ in different N pools could assist in understanding N demands of terrestrial ecosystems (Craine et al. 2009; Perakis and Johnson 2011). The current literature has covered various aspects of using a range of methodologies, identifying climate extremes and their effects on terrestrial ecosystems. One particular methodology that is well established in the relationship of forestry health and climate is tree ring technology, which has long been used to investigate long-term tree responses to environmental and climatic change (Williams et al. 2010; Tomlinson 2015). This is analysed through the measurement of tree growth in the width of annual growth rings (Williams et al. 2010). Wide rings generally form during years of optimal climatic conditions and narrow rings occur in response to poor conditions; thus, tree rings are a well-established methodology in viewing the relationship between ring width and climate (Williams et al. 2010). To date, several studies have inferred forest responses to future climate change from statistical relationships between tree-ring record and climate variability during the life span of the tree (Williams et al. 2010; Tomlinson 2015). Basal area increment (BAI) is used to analyse tree growth and the relationship of climate change giving an accurate understanding of physiological and climatic relationship other than ring width (Williams et al. 2010; Tomlinson 2015). Stable isotopes (¹³C, ¹⁵N and ¹⁸O) have been used to further understand the relationships of physiological and biogeochemical responses, carbon cycling, atmospheric CO₂, N cycling and water availability, to the increase of climate change (Williams et al. 2010; Tomlinson 2015). Due to variation in site- and

species-specific responses, tree ring methodology is providing valuable information on the long-term effects of forestry health (Tomlinson 2015).

While BAI, tree ring ^{13}C and ^{18}O have been heavily applied to understand the relationships of climate change and forest health. The ^{15}N natural abundance in the soil and plant tissues (plant ecosystems) has shown that $\delta^{15}\text{N}$ is closely linked to the importance of N cycling processes and the N balance in the context of climate change, climate extremes and bushfires (Perakis et al. 2011; Wang et al. 2015, 2020a, b). Increasing $\delta^{15}\text{N}$ in the soil is associated with losses of isotopically depleted nitrate and trace N gases and these processes can enable modelling of $\delta^{15}\text{N}$ dynamics with ^{15}N mass balance and identifying the potential pathways of N inputs and losses. However, there has been limited empirical evidence of the intensity and frequency of climate extremes within forestry ecosystems and how N cycling is affected and whether specific isotopic structures such as $\delta^{15}\text{N}$, obtained within tree rings, can be used to fingerprint the climate extremes and bushfires (Succarie et al. 2020).

In this study, we aimed to provide a brief literature review, together with our preliminary research findings, to examine the potential of using tree ring $\delta^{15}\text{N}$ for fingerprinting climate extremes and bushfires at regional and global scale.

2 Methods and materials

2.1 Site description

Mohe City is located in northwest of the Heilongjiang Province, China ($52^{\circ} 10' - 53^{\circ} 33' \text{ N } 121^{\circ} 07' - 124^{\circ} 20' \text{ E}$). Climate in this area is subarctic, with long cold winters and short warm summers; the average annual mean temperature is -4.49°C . The winters generally last from mid-October until April; the average temperature stays below freezing for 7 months in a year. The Heilongjiang Province is one of the largest agricultural bases in China, containing large plantation forests that are used for wood production. The plantation forest that the sample trees were collected from is the boreal forest consisting mainly of *Pinus* species and *Larix* species.

2.2 Tree ring sampling and preparation

Tree ring samples were chosen at random in the plantation forest. Four sample trees were chosen for *Pinus sylvestris* var. *mongolica* and four sample trees were chosen for *Larix gmelinii*. *Pinus sylvestris* var. *mongolica* was a dominant species in the plantation forest; hence, a larger number of sample trees were collected. In August 2018, 10–15-cm tree ring cores were collected from each sample tree. The tree ring cores were then processed (air-dried and polished) and

cross dated according to the procedures established by Sun et al. (2010) and Xu et al. (2014). The ring width was measured to 0.01-mm precision along four radii to avoid growth anomalies and then dated by using a semi-automated device TSAP-Win Scientific software system. To check for tree ring width data accuracy and the quality of cross-dating, we used the statistical program COFECHA.

2.3 $\delta^{15}\text{N}$ measurement

Using the same sectioning for the $\delta^{15}\text{N}$ measurement, a spike was added into each sample. This N spike with known total N and $\delta^{15}\text{N}$ was added to increase the N content within the tree ring sample so that tree ring total N and $\delta^{15}\text{N}$ can be determined on the isotope ratio mass spectrometry and calculated based on the mass balance method. First, 56.6 mg of ammonium sulphate $(\text{NH}_4)_2\text{SO}_4$ was weighted and placed into a tube containing 20 ml water, then the solution was mixed for 1 h and put into the fridge. After the spike was dried, we weighed and recorded the weight then an amount of 8–9 mg of tree ring powder was weighed and placed into the spiked tin capsules, to analyse for $\delta^{15}\text{N}$ measurement; four spikes were left without tree ring material as a control, using a Secron Hydra 20–22 isotope ratio mass spectrometer coupled with a Europa EA GSL sample prep system in Stable Isotope Laboratory. The equation to calculate the $\delta^{15}\text{N}$ was as follows:

$$\delta^{15}\text{N} = 1000 \times (R_{\text{sample}}/R_{\text{standard}})/R_{\text{standard}}$$

where R_{sample} was the $^{15}\text{N}/^{14}\text{N}$ ratio within the sample that was given from the isotope analysis and the R_{standard} was the $^{15}\text{N}/^{14}\text{N}$ ratio of the air as the reference.

3 Impacts of climate change on climate extremes and N cycling

Climate change has become a catastrophic event that has altered the Earth's ecosystems. Globally, increasing atmospheric CO_2 and water limitations are two key features of climate change, resulting in a warmer and drier future. Climate change is changing the distribution of climate extremes. This is due to increases in atmospheric CO_2 concentration, air temperatures and extreme climate events caused by combustion of fossil fuels and biomass (Amthor et al. 1995; Bai et al. 2015a, b; Savard et al. 2020). This raises a major concern on biodiversity loss and the impacts of ecosystems functioning on both regional and global scale (Amthor et al. 1995). To date, it is evident that atmospheric CO_2 concentration is influenced by both abiotic and biotic factors, such as N and water and this influence has induced a warmer and drier climate (Choi et al. 2020).

Nitrogen is another important factor that affects the productivity of the ecosystem and nutrient availability (Bai et al. 2015b). The anthropogenic creation of reactive N in 2010 has doubled compared to the rate of naturally terrestrial produced N (Savard et al. 2020; Takizawa et al. 2017; Michelsen-Correa et al. 2018; Yang 2018). Increased reactive N is through agricultural practices, such as use of fertiliser and burning of fossil fuels causing air pollution. Fertiliser has been used in agroforestry and agricultural lands to enhance plant growth through improving nutrient availability such as phosphorus and N. Increase in N inputs within the ecosystems can increase the efficiency of C sequestration of some tree species. But high rates of fertilisation can saturate the biological demand of N and lead to increased rate of N loss through leaching, denitrification and volatilisation (Takizawa et al. 2017; Michelsen-Correa et al. 2018).

High combustion of fossil fuel emissions within the atmosphere due to anthropogenic use has caused a decline in forestry health. High pollution rates have led to acid deposition. Acid deposition is slow through long-term chronic influences and can only be detected once visible symptoms appear. Chemical signatures that are sensitive to the acid deposition is a helpful indicator for forestry health (Yang 2018; Katahata 2007). With an increase in N availability within soil due to fertiliser, it is expected to result in the imbalance of N sources within soil structure thus potential leading to N losses via denitrification and leaching which many agricultural lands have found to be an increasing problem with crop growth and soil health, leading to much higher soil and plant $\delta^{15}\text{N}$ (Denk et al. 2017).

The reactive N depositions contribute to the currently increasing natural CO_2 sinks, in forest ecosystem especially, as well as increases in the production of N_2O within soil environments due to the lack of energy and nutrients that could not be observed by microbes. During the same interval as the CO_2 concentration, N_2O has increased by 20% from 271 to 324 ppb in 2011 (Portl et al. 2007; Bai et al. 2015a, b). This increase can possibly shift our prediction of the effects of climate change and its relationship to N. Current literature on climate change shows a higher frequency and intensity of various climate extremes such as droughts, floods and bushfires (Sun et al. 2010; Fu et al. 2020). Thus, climate change and climate extremes have been concluded to alter N cycling and transformation as well as C cycling within terrestrial ecosystems. This highlighted a need to further understand the relationship of increased climate change to acceleration of climate extremes and their effects on

soil N transformations (Sun et al. 2010; Xu et al. 2014; Fu et al. 2020; Succarie et al. 2020; Liu et al. 2021).

4 Tree ring analyses on the long-term effects of climate change and their relationship with the N cycling process

Annual tree ring chronologies can date the effects of climate change and long-term temperature records going back centuries. Using tree ring basal area increment (BAI) and stable isotope compositions, we can construct tree physiological responses to climate change (Sun et al. 2010; Xu et al. 2014; Fu et al. 2020; Liu et al. 2021). The carbon isotopic composition ($\delta^{13}\text{C}$) of tree rings is a sensitive proxy for water availability and can provide historical records of intrinsic water use efficiency (WUEi) (Farquhar et al. 1982; Tomlinson 2015), which was also used to define the ratio of net photosynthesis to transpiration. These proxies are affected and correlate with changes in climate, atmospheric CO_2 concentration, air pollution and nutrient availability (Peri et al. 2012; Tomlinson 2015).

The $\delta^{15}\text{N}$ is a proxy for N losses and availability in the forest ecosystems which is used to define the N deposition within forest ecosystem (for example, see Fig. 4) (Sun et al. 2010; Tomlinson 2015). Changes in soil–plant $\delta^{15}\text{N}$ can provide an index of ecosystem N cycling. The ratio of N input or output relative to the N pools has been analysed by changes in plant and soil $\delta^{15}\text{N}$ (Hart et al. 2003; Craine et al. 2009; Perakis 2011). Current research has also used the $\delta^{15}\text{N}$ signature as an index of N losses and fixation within soil and plant ecosystems (Koba et al. 2003; Portl et al. 2007). Differences in $\delta^{15}\text{N}$ values are closely associated with the N cycling processes such as N mineralisation, nitrification and denitrification which have been represented in Fig. 1 (Handley et al. 1999; Houlton et al. 2007; Craine et al. 2018). A recent study has found the use of $\delta^{15}\text{N}$ and climate extremes and bush fires, within sediment samples as a measure of the effects of water availability and N cycling due to climate change (Gosling et al. 2022). The $\delta^{15}\text{N}$ was recovered from sediment, providing a historical record of fire activity and moisture availability, compared with atmospheric CO_2 data and temperature of the region. This indicates the potential relationship between $\delta^{15}\text{N}$ and climate extremes (Kast et al. 2019; Gosling et al. 2022). Within the literature, there is an abundance of experimental design of using $\delta^{15}\text{N}$ as an indicator for long-term responses of N cycling, water availability and soil and plant health. The $\delta^{15}\text{N}$ has been extracted from soil material, foliage and other plant tissue; however, there is little research of using tree ring $\delta^{15}\text{N}$ to fingerprint the frequency and intensity of climate extremes and bushfires.

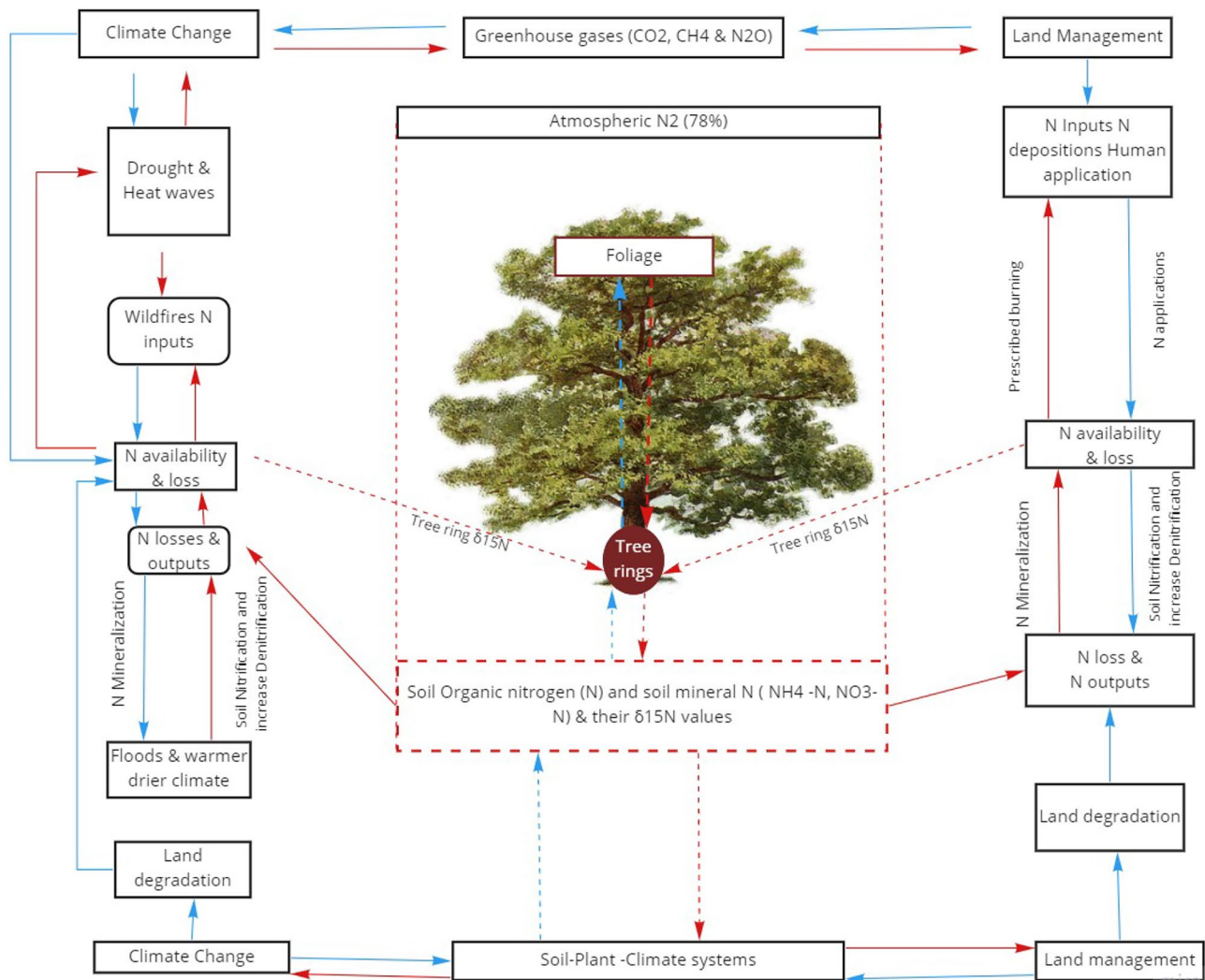


Fig. 1 Schematic model of N loss and availability affected by climate extremes and land degradation as fingerprinted by tree ring N isotopic composition ($\delta^{15}\text{N}$)

5 Tree ring $\delta^{15}\text{N}$ as an indicator of intensity and frequency of climate extremes and bushfires

5.1 Droughts

Drought has been a global extreme that has affected many ecosystems and agricultural habitats with the increase of temperature and reduction of seasonal water availability, while the frequency and intensity of drought have increased (Sardans et al. 2020; Looney et al. 2021). Drought events cause water stress within the soil–plant systems, which can reduce photosynthesis and cause resistance of CO_2 diffusion to the chloroplast and metabolic inhibition through stomatal closure (Looney et al. 2021). The high salt content within the chloroplasts leads to inadequate photosynthesis which can transfer to photorespiration and have a detrimental effect on

the mitochondrial metabolic synthesis (Sardans et al. 2020). This can also lead to lower levels of nutrient uptake and energy uptake due to the lack of C thus reducing the N mineralisation, respiration, nitrification and soil moisture (Xue et al. 2020; Zhang et al. 2021; Peguero et al. 2021). Both $\text{NO}_3\text{-N}$ and $\text{NH}_4\text{-N}$ are sensitive to dry conditions, since N mineralisation, nitrification, denitrification and $\text{NO}_3\text{-N}$ leaching are decreased (Lennon et al. 2017; Peguero et al. 2021). Current literature has shown that drought can influence the N input and output within the terrestrial ecosystems. Due to the lack of water content, soil N transformations are generally very low within the soil, thus with little N losses (Zhang et al. 2021). Under drought conditions, there would be high nitrification and soil and plant $\delta^{15}\text{N}$ would be expected to be very low (Ibell et al. 2013; Wang et al. 2015, 2020a, b, c; Nessa et al. 2021). These indicate the relationship that has been measured within current literature on the

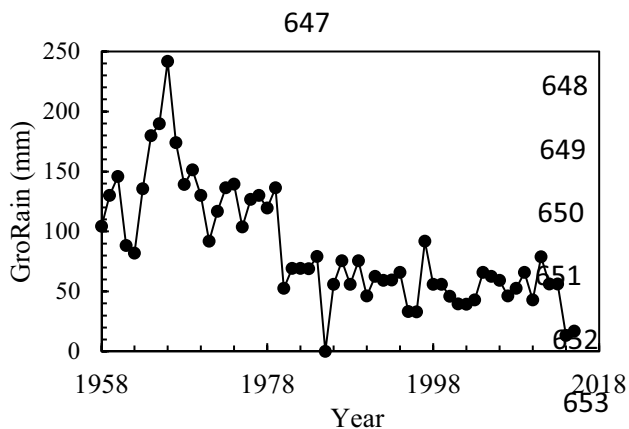


Fig. 2 Mean annual growing season rainfall (GroRain, mm) during 1958–2016 ($n=57$) for the study site in Northern China

implication and relationship between N transformation and cycling and drought events in soil and plant systems using soil $\delta^{15}\text{N}$.

It is expected that lower tree ring $\delta^{15}\text{N}$ values would be detected under drought conditions since there would be little N mineralisation and hence little available mineral N to be lost via soil nitrification, denitrification and leaching (Figs. 2 and 3).

5.2 Bushfires

Bushfires is a detrimental event that is triggered by climate change and increased drought and a warmer-drier climate. Increasing bushfires, due to climate change and drought, N fertilisers and burning of fossil fuels can increase the amount of N gas emissions to the atmosphere (Aber et al. 1998; Choi et al. 2020; Wang et al. 2020a, b, c). However, to date, unlike the C cycle, there is limited understanding of increasing bushfire impacts on the N cycling in terrestrial ecosystems (Lavorel et al. 2007; Wang et al. 2018, 2020a, b, c; Nessa et al. 2021; Taresh et al. 2021).

Due to high N inputs from the N depositions, most of the deposited N in the soil would be lost via soil nitrification—denitrification and leaching, resulting in higher $\delta^{15}\text{N}$ values in soil ammonium N and nitrated N (Wang et al.

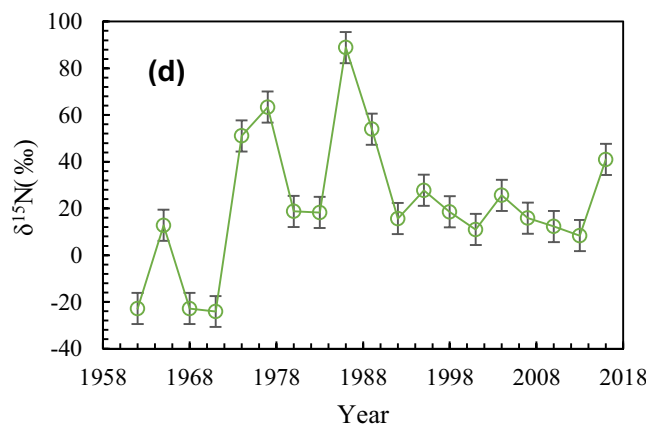
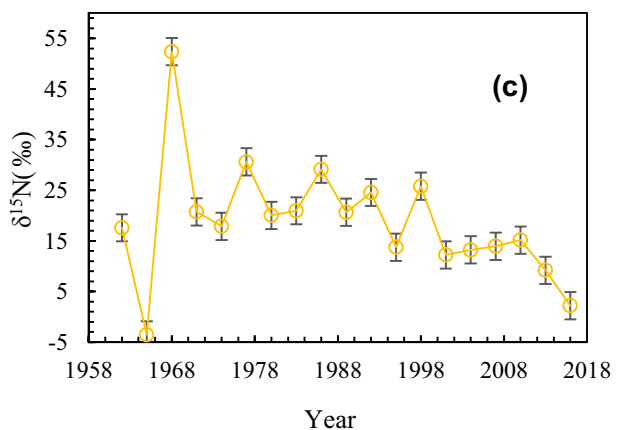
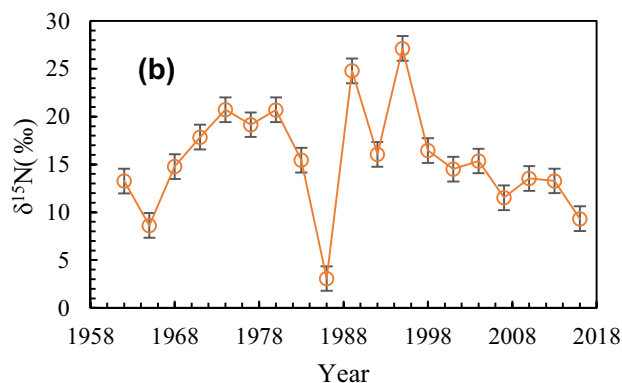
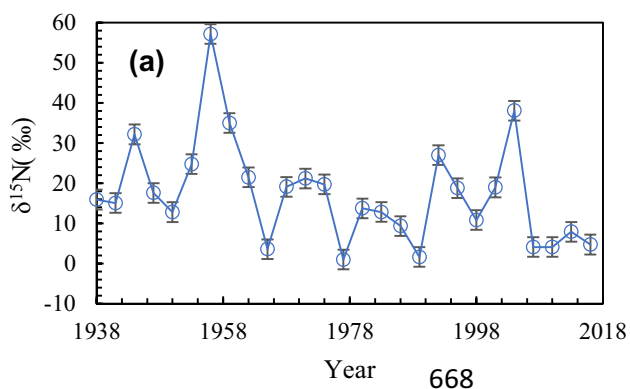


Fig. 3 Impacts of climate extremes and bushfires during lifespan of *Pinus sylvestris* on mean annual ^{15}N natural abundance ($\delta^{15}\text{N}$, ‰) in tree ring samples (averaged at 3-year interval) for sample tree 1

(81 years old in 2018) (a), sample tree 2 (57 years old in 2018) (b), sample tree 3 (57 years old in 2018) (c) and sample tree 4 (57 years old in 2018) (d) in Northern China

2015, 2020a, b, c). The $\delta^{15}\text{N}$ in the soil (plant ecosystems) is closely linked to the important N cycling processes and the N balance in the context of climate change and increasing bushfires (Perakis et al. 2011; Wang et al. 2015, 2020a, b, c). Increasing $\delta^{15}\text{N}$ in the soil is associated with losses of isotopically depleted nitrate and trace N gases and these processes can enable modelling of $\delta^{15}\text{N}$ dynamics with ^{15}N mass balance and identify potential pathways of N inputs and losses. This would be much easier to measure than direct measurements of N deposition and losses of N gases by denitrification (Perakis et al. 2011; Masse et al. 2016).

The $\delta^{15}\text{N}$ can be used to evaluate the bushfire events and major site disturbances (such as logging and thinning) to understand the N balance and dynamics in terrestrial ecosystems. However, there is still uncertainty of the long-term effects of such disturbances on N balance in an ecosystem (Perakis et al. 2011). The N availability is an important indicator of forest health (Aber et al. 1998). The N deposition in the 11% of the world's forest ecosystems has exceeded the critical threshold (Delwiche 1970; Cleveland et al. 1999). From 1980 to 2010, the average N bulk deposition increased in China by 60% (Liu et al. 2021). Given the limited supply of N in terrestrial ecosystems (Delwiche 1970; Aber et al. 1998), N deposition is an important driver for ecosystem respiration across all biomasses. Water stress can also influence N limitations, reducing tree capacity to assimilate atmospheric CO_2 . With this in mind, understanding the effects of major bushfires on $\delta^{15}\text{N}$ and N cycling in terrestrial ecosystems has become increasingly important (Wang et al. 2015, 2020a, b, c; Succarie et al. 2020).

Previous studies have reported that an indicator of long-term bushfires can be observed in tree ring $\delta^{15}\text{N}$, via looking at the fire history reconstruction by comparing long-term, sedimentary charcoal with nearby fire scar chronologies (Holz et al. 2012). There is little literature on relationships among tree ring $\delta^{15}\text{N}$, total N concentration and bushfires, with most of the research that has been done about bushfire impacts on $\delta^{15}\text{N}$ and N cycling processes in the soils (Wang et al. 2015, 2020a, b, c). In our preliminary study (Figs. 2 and 3), we have successfully used tree rings $\delta^{15}\text{N}$ to fingerprint the 1986 bushfires in Da Xin An Ling mountains of Northern China, with tree ring $\delta^{15}\text{N}$ higher when the trees samples were closer to the burned areas.

Our results have given insights into the current gaps in N depletion due to major bushfires as well as the high and low peaks of N availability in the recorded lifespan of the chosen species in boreal forests. The results answered both our questions that were made in the study aims to test whether the neighbouring forest would record the 1987 major bushfires in the affected area by tree ring $\delta^{15}\text{N}$. When measuring the tree ring $\delta^{15}\text{N}$ in each 3-year interval of each sample tree for each species, they all had increases and decreases in tree ring $\delta^{15}\text{N}$, indicating that N depletion was not only shown in

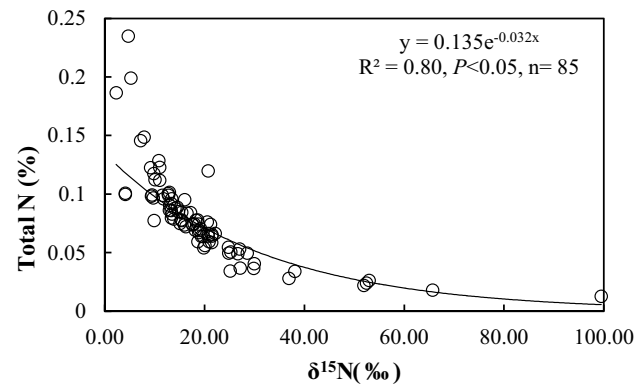


Fig. 4 Relationship between total nitrogen (N) concentration (%) and ^{15}N natural abundance ($\delta^{15}\text{N}$, ‰) in tree rings of *P. sylvestris* in Northern China

the soil but also in the tree rings (Figs. 3 and 4). In this study, tree ring $\delta^{15}\text{N}$ and total N concentration of *Pinus* species were more sensitive to ecosystem N availability, which could be significantly influenced by major forest disturbances such as harvesting, thinning and bushfires (Fig. 4).

5.3 Floods

Considerable evidence of high temperature has led to precipitation extremes increasing in magnitude and frequency, further leading to flood hazards (Veijalainen 2010; Nolin 2021). Floods account for 84% of all-natural disaster global death, and with the increase of temperature it has been recorded with increasing flooding events (Takai and Kamura 1966; Milly 2002; Panahi 2021). There has not been a clear definition, as to whether the floods are caused by climate change or natural process. Whether climate change has caused and increased flood intensity and frequency, and how this is affecting the ecosystems have also not been fully understood. Current literature has measured flood hazards with high levels of seasonal precipitation within various forest types and climate zones such as tropical, subtropical, temperate, boreal, Mediterranean and arid zones (Escher et al. 2004; Nolin 2021), indicating more of a historical flooding, rather than floods that have been increased by climate change. Flooded soil has the potential losses of N due to high levels of denitrification a major source of greenhouse gases (Reddy 1990; Bei et al. 2013; Zhou 2020). Saturation of water due to flooding affects the supply of oxygen within soil and oxygen is generally decreased (Davidsson 1996; Pu et al. 2002). Oxygen is the main factor to regulate denitrification, soil nitrification and when there is a lower supply of oxygen the second important factor is $\text{NO}_3^- \text{N}$ as an external source, which requires a larger amount of energy, and with the lack of C and energy sources this can prove detrimental (Kozłowski 1984; Davidson et al. 1996; Zhou 2020). In the

absence of oxygen which may occur when roots are flooded, flooding can induce oxygen deficiency because oxygen is difficult to diffuse in water (Unger et al. 2009; Shen and Chui 2021).

Flooding is one of the dominant mechanisms leading to the O₂ depletion and low redox conditions, by greatly retarding the diffusion of soil matrix, while flooding can cause O₂ demand to exceed that of diffusive resupply leading to anaerobic conditions (Unger et al. 2009; McNicol and Silver 2014). Flooding can change the soil pore-space phase gas to liquids and alter the physico-chemical environments (Mitchell and Soga 1993; McNicol and Silver 2014). Increased soil matrix connectivity under flooded conditions could connect microbes to dissolve solutes, which could enhance lower soil tortuosity and stimulate NO₃ reduction and increase N₂O production (Patrick and Reddy 1976; McNicol and Silver 2014; Fujiyoshi et al. 2019). In short, flooding events would be expected to result in major N losses via denitrification and leaching, leading to much higher soil and plant δ¹⁵N; thus, it is important to further understand if the intensity and frequency of floods have been increased due to climate change, which possibly can be recorded and shown in tree ring δ¹⁵N.

The study of the anatomy of growth rings in trees directly expose to seasonal floods can provide quantitative and continuous predictors of seasonal climate in forestry ecosystems (Nordin et al. 2001; Nolin 2021). The traditional understanding of this proxy is through observing flood ring which is an anatomical change in earlywood vessels associated with the physiological responses to anoxia during persistent flooding (Nordin et al. 2001; Oh 2008; Nolin 2021). As shown in Fig. 3a–d, there are various peaks of tree ring δ¹⁵N indicating a change in N availability and N losses. Once comparing the precipitation high peaks with the δ¹⁵N high peaks it gives an indication that these peaks are due to high precipitation essentially flooding, these high peaks show the intensity of flooding within the area, causing high N losses within the soil via denitrification and leaching as mentioned above (Figs. 2 and 3), each individual plant can have a slight variation of the peaks due to ageing and where they were positioned within the forest due to the soil N variability, some species/individuals that are more sensitive could indicate a higher exposure to the flooding as shown in Fig. 3a, d, which show larger peaks than Fig. 3b, c. Our preliminary tree ring δ¹⁵N study represents the first attempt to use tree ring δ¹⁵N for fingerprinting the climate extremes of droughts and floods as well as bushfires, but more research would need to be done in different forest ecosystems to confirm the potential of using tree ring δ¹⁵N to reconstruct the past climate extremes and bushfires as compared with the other approaches

(Figs. 2 and 3). It is also interesting to note that there would be negative, nonlinear relationships between tree ring δ¹⁵N and tree ring N concentration or N availability, highlighting higher tree ring δ¹⁵N due to higher N losses and lower N availability (Fig. 4).

6 Conclusions

The literature review and our preliminary research findings have highlighted that the δ¹⁵N in soil–plant system is a very powerful indicator of major biotic and abiotic factors influencing the ecosystem N losses and availability, and tree ring δ¹⁵N offers exciting and novel approach for fingerprinting the climate extremes (particularly drought and floods) and bushfires in forest ecosystems. It has the great potential to use tree ring δ¹⁵N for quantifying the intensity and frequency of climate extremes (particularly drought and floods) and bushfires in the context of intensifying climate change and land use.

Acknowledgements The authors acknowledge Griffith University and Centre of Planetary Health and Food Security. The authors thank Rad Bak for his assistance in stable isotope analysis.

Funding Open Access funding enabled and organized by CAUL and its Member Institutions.

Declarations

Competing interests The authors declare no competing interests.

Open Access This article is licensed under a Creative Commons Attribution 4.0 International License, which permits use, sharing, adaptation, distribution and reproduction in any medium or format, as long as you give appropriate credit to the original author(s) and the source, provide a link to the Creative Commons licence, and indicate if changes were made. The images or other third party material in this article are included in the article's Creative Commons licence, unless indicated otherwise in a credit line to the material. If material is not included in the article's Creative Commons licence and your intended use is not permitted by statutory regulation or exceeds the permitted use, you will need to obtain permission directly from the copyright holder. To view a copy of this licence, visit <http://creativecommons.org/licenses/by/4.0/>.

References

- Aber J, McDowell W, Nadelhoffer K, Magill A, Bernston G, Kamakea M, McNulty S, Currie W, Rustad L, Fernandez I (1998) Nitrogen saturation in temperate forest ecosystems: hypotheses revisited. *Bio Sci* 48(11):921–934
- Amthor JS (1995) Terrestrial higher-plant response to increasing atmospheric [CO₂] in relation to the global carbon cycle. *Glob Change Biol* 1(4):243–274
- Bai SH, Reverchon F, Xu CY, Xu Z, Blumfield TJ, Zhao H, Van Zwieten L, Wallace HM (2015a) Wood biochar increases nitrogen retention

- in field settings mainly through abiotic processes. *Soil Biol Biochem* 90:232–240
- Bai SH, Sun F, Xu Z, Blumfield TJ, Chen C, Wild C (2012) Appraisal of ^{15}N enrichment and ^{15}N natural abundance methods for estimating N_2 fixation by understorey *Acacia leiocalyx* and *A. dispartinna* in a native forest of subtropical Australia. *J Soils Sediments* 12(5):653–62
- Bai SH, Xu ZH, Blumfield TJ, Reverchon F (2015b) Human footprints in urban forests: implication of nitrogen deposition for nitrogen and carbon storage. *J Soils Sediments* 15:1927–1936
- Bei Q, Liu G, Tang H, Cadisch G, Rasche F, Xie Z (2013) Heterotrophic and phototrophic $^{15}\text{N}_2$ fixation and distribution of fixed ^{15}N in a flooded rice–soil system. *Soil Biol Biochem* 59:25–31
- Chen CR, Xu ZH (2008) Analysis and behaviour of soluble organic nitrogen in forest soils. *J Soils Sediments* 8(6):363–378
- Choi WJ, Kwak JH, Park HJ, Yang HI, Park SI, Xu ZH, Lee SM, Lim SS, Chang SX (2020) Land-use type, and land management and disturbance affect soil $\delta^{15}\text{N}$: a review. *J Soils Sediments* 20(9):3283–3299
- Craine JM, Elmore AJ, Wang L, Aranibar J, Bauters M, Boeckx P, Crowley BE, Dawes MA, Delzon S, Fajardo A, Fang Y (2018) Isotopic evidence for oligotrophication of terrestrial ecosystems. *Nat Ecol Evol* 2(11):1735–1744
- Craine JM, Elmore AJ, Aidar MP, Bustamante M, Dawson TE, Hobbie EA, Kahmen A, Mack MC, McLauchlan KK, Michelsen A, Nardoto GB (2009) Global patterns of foliar nitrogen isotopes and their relationships with climate, mycorrhizal fungi, foliar nutrient concentrations, and nitrogen availability. *New Phytol* 183(4):980–992
- Cleveland CC, Townsend AR, Schimel DS, Fisher H, Howarth RW, Hedin LO, Perakis SS, Latty EF, Von Fischer JC, Elseroad A, Wasson MF (1999) Global patterns of terrestrial biological nitrogen (N_2) fixation in natural ecosystems. *Glob Biogeochem Cycl* 13(2):623–645
- Davidsson TE, Leonardson LG (1996) Effects of nitrate and organic carbon additions on denitrification in two artificially flooded soils. *Ecol Eng* 7(2):139–149
- Delwiche CC, Steyn PL (1970) Nitrogen isotope fractionation in soils and microbial reactions. *Environ Sci Technol* 4(11):929–935
- Denk TR, Mohn J, Deckock C, Lewicka-Szczebak D, Harris E, Butterbach-Bahl K, Kiese R, Wolf B (2017) The nitrogen cycle: a review of isotope effects and isotope modelling approaches. *Soil Biol Biochem* 105:121–137
- Escher P, Eiblmeier M, Rennenberg H (2004) Differences in the influx of glutamine and nitrate into *Viscum album* from the xylem sap of its hosts. *Plant Physiol Biochem* 42(9):739–744
- Farquhar GD, O’Leary MH, Berry JA (1982) On the relationship between carbon isotope discrimination and the intercellular carbon dioxide concentration in leaves. *Funct Plant Biol* 9(2):121–137
- Fu LI, Xu Y, Xu Z, Wu B, Zhao D (2020) Tree water-use efficiency and growth dynamics in response to climatic and environmental changes in a temperate forest in Beijing. *China Environ Int* 134:105209
- Fujiyoshi L, Sugimoto A, Yamashita Y, Li X (2019) Influence of soil N availability on the difference between tree foliage and soil $\delta^{15}\text{N}$ from comparison of Mongolia and northern Japan. *Ecol Indic* 101:1086–1093
- Girardin MP, Wotton BM (2009) Summer moisture and wildfire risks across Canada. *J Appl Meteor Climat* 48(3):517–533
- Gosling WD, Miller CS, Shanahan TM, Holden PB, Overpeck JT, van Langevelde F (2022) A stronger role for long-term moisture change than for CO_2 in determining tropical woody vegetation change. *Science* 376(6593):653–656
- Guinto DF, Xu Z, House AP, Saffigna PG (2000) Assessment of N_2 fixation by understorey acacias in recurrently burnt eucalypt forests of subtropical Australia using ^{15}N isotope dilution techniques. *Can J for Res* 1:112–121
- Handley LL, Austin AT, Stewart GR, Robinson D, Scrimgeour CM, Raven JA, Schmidt S (1999) The ^{15}N natural abundance ($\delta^{15}\text{N}$) of ecosystem samples reflects measures of water availability. *Funct Plant Biol* 26(2):185–199
- Hart SC, Classen AT (2003) Potential for assessing long-term dynamics in soil nitrogen availability from variations in $\delta^{15}\text{N}$ of tree rings. *Isotopes Environ Health Studies* 39(1):15–28
- Holz A, Haberle S, Veblen TT, Pol-Holz D, Southon J (2012) Fire history in western Patagonia from paired tree-ring fire-scar and charcoal records. *Clim past* 8(2):451–466
- Houlton BZ, Sigman DM, Schuur EA, Hedin LO (2007) A climate-driven switch in plant nitrogen acquisition within tropical forest communities. *Proc Natl Acad Sci USA* 104(21):8902–8906
- Ibell PT, Xu ZH, Blumfield TJ (2013) The influence of weed control on foliar $\delta^{15}\text{N}$, $\delta^{13}\text{C}$ and tree growth in an 8-year-old exotic pine plantation of subtropical Australia. *Plant Soil* 369(1):199–217
- Kast ER, Stolper DA, Auderset A, Higgins JA, Ren H, Wang XT, Martínez-García A, Haug GH, Sigman DM (2019) Nitrogen isotope evidence for expanded ocean suboxia in the early Cenozoic. *Science* 364(6438):386–389
- Katahata SI, Naramoto M, Kakubari Y, Mukai Y (2007) Photosynthetic capacity and nitrogen partitioning in foliage of the evergreen shrub *Daphniphyllum humile* along a natural light gradient. *Tree Physiol* 27(2):199–208
- Koba K, Hirobe M, Koyama L, Kohzu A, Tokuchi N, Nadelhoffer KJ, Wada E, Takeda H (2003) Natural ^{15}N abundance of plants and soil N in a temperate coniferous forest. *Ecosystems* 6(5):457–469
- Kozłowski TT (1984) Plant responses to flooding of soil. *Bio Sci* 34(3):162–167
- Lavorel S, Díaz S, Cornelissen JH, Garnier E, Harrison SP, McIntyre S, Pausas JG, Pérez-Harguindeguy N, Roumet C, Urcelay C (2007) Plant functional types: are we getting any closer to the Holy Grail? In *Terrestrial ecosystems in a changing world* IGB series 13:149–164
- Lennon EF, Houlton BZ (2017) Coupled molecular and isotopic evidence for denitrified controls over terrestrial nitrogen availability. *ISME J* 11(3):727–740
- Li L, Zheng Z, Biederman J, Xu C, Xu Z, Che R, Hao Y (2019) Ecological responses to heavy rainfall depend on seasonal timing and multi-year recurrence. *New Phytol* 223(2):647–660
- Li L, Qian R, Wang W, Kang X, Ran Q, Zheng Z, Zhang B, Xu C, Che R, Dong J, Xu Z (2020a) The intra- and inter-annual responses of soil respiration to climate extremes in a semiarid grassland. *Geoderma* 378:114629
- Li L, Kang X, Biederman JA, Wang W, Qian R, Zheng Z, Zhang B, Ran Q, Xu C, Liu W, Che R (2021a) Nonlinear carbon cycling responses to precipitation variability in a semiarid grassland. *Sci Tot Environ* 781:147062
- Li L, Zheng Z, Wang W, Biederman JA, Xu X, Ran Q, Qian R, Xu C, Zhang B, Wang F, Zhou S (2020b) Terrestrial N_2O emissions and related functional genes under climate change: a global meta-analysis. *Glob Change Biol* 26(2):931–943
- Li L, Zheng Z, Biederman JA, Qian R, Ran Q, Zhang B, Xu C, Wang F, Zhou S, Che R, Dong J (2021c) Drought and heat wave impacts on grassland carbon cycling across hierarchical levels. *Plant Cell Environ* 44(7):2402–2413
- Li L, Hao Y, Wang W, Biederman JA, Wang Y, Zheng Z, Wen F, Qian R, Zhang B, Song X, Cui X (2022c) Joint control by soil moisture, functional genes, and substrates on response of N_2O flux to climate extremes in a semiarid grassland. *Agric for Meteorol* 316:108854
- Li L, Hao Y, Zheng Z, Wang W, Biederman JA, Wang Y, Wen F, Qian R, Xu C, Zhang B, Song X (2022a) Heavy rainfall in peak growing season had larger effects on soil nitrogen flux and pool than in the late season in a semiarid grassland. *Agric Ecosyst Environ* 326:107785
- Li L, Qian R, Liu W, Wang W, Biederman JA, Zhang B, Kang X, Wen F, Ran Q, Zheng Z, Xu C (2022b) Drought timing influences

- the sensitivity of a semiarid grassland to drought. *Geoderma* 412:115714
- Liu T, Xu Y, Xu Z, Deng H (2021) Effects of climate change and local environmental factors on long-term tree water-use efficiency and growth of *Pseudolarix amabilis* and *Cryptomeria japonica* in subtropical China. *J Soils Sediments* 21(2):869–880
- Looney CE, D'Amato AW, Jovan S (2021) Investigating linkages between the size-growth relationship and drought, nitrogen deposition, and structural complexity in western US forests. *For Ecol Manage* 497:119494
- Masse J, Prescott CE, Müller C, Grayston SJ (2016) Gross nitrogen transformation rates differ in reconstructed oil-sand soils from natural boreal-forest soils as revealed using a ^{15}N tracing method. *Geoderma* 282:37–48
- McNicol G, Silver WL (2014) Separate effects of flooding and anaerobiosis on soil greenhouse gas emissions and redox sensitive biogeochemistry. *J Geophys Res Biogeosci* 119(4):557–566
- Milly PCD, Wetherald RT, Dunne KA, Delworth TL (2002) Increasing risk of great floods in a changing climate. *Nature* 415(6871):514–517
- Mitchell JK, Soga K (1993) *Fundamentals of soil behavior*. John Wiley & Sons 3:325–345
- Michelsen-Correa S, Harrison R, Dietzen C (2018) Enhanced efficiency fertilizers (EEFs) do not increase nitrogen retention in Pacific Northwest Douglas-fir forest soils four weeks post-fertilization. *For Ecol Manage* 427:317–324
- Nessa A, Bai SH, Wang D, Karim Z, Omidvar N, Zhan J, Xu Z (2021) Soil nitrification and nitrogen mineralization responded non-linearly to the addition of wood biochar produced under different pyrolysis temperatures. *J Soils Sediments* 21:3813–3824
- Nolin AF, Tardif JC, Conciatori F, Kames S, Meko DM, Bergeron Y (2021) Multi-century tree-ring anatomical evidence reveals increasing frequency and magnitude of spring discharge and floods in eastern boreal Canada. *Glob Planet Change* 199:103444
- Nordin A, Uggla C, Näsholm T (2001) Nitrogen forms in bark, wood and foliage of nitrogen-fertilized *Pinus sylvestris*. *Tree Physiol* 21(1):59–64
- Oh K, Kato T, Xu HL (2008) Transport of nitrogen assimilation in xylem vessels of green tea plants fed with $\text{NH}_4\text{-N}$ and $\text{NO}_3\text{-N}$. *Pedosphere* 18(2):222–226
- Panahi M, Jaafari A, Shirzadi A, Shahabi H, Rahmati O, Omidvar E, Lee S, Bui DT (2021) Deep learning neural networks for spatially explicit prediction of flash flood probability. *Geosci Front* 12(3):101076
- Patrick WH, Reddy KR (1976) Nitrification-denitrification reactions in flooded soils and water bottoms: dependence on oxygen supply and ammonium diffusion. *J Environ Qual* 5:469–472
- Peguero G, Folch E, Liu L, Ogaya R, Peñuelas J (2021) Divergent effects of drought and nitrogen deposition on microbial and arthropod soil communities in a Mediterranean forest. *Eur J Soil Biol* 103:103275
- Perakis S, Sinkhorn ER (2011) Biogeochemistry of a temperate forest nitrogen gradient. *Ecology* 92(7):1481–1491
- Peri PL, Ladd B, Pepper DA, Bonser SP, Laffan SW, Amelung W (2012) Carbon ($\delta^{13}\text{C}$) and nitrogen ($\delta^{15}\text{N}$) stable isotope composition in plant and soil in Southern Patagonia's native forests. *Glob Change Biol* 18(1):311–321
- Pörtl K, Zechmeister-Boltenstern S, Wanek W, Ambus P, Berger TW (2007) Natural ^{15}N abundance of soil N pools and N_2O reflect the nitrogen dynamics of forest soils. *Plant Soil* 295(1):79–94
- Pu G, Xu Z, Saffigna PG (2002) Fate of ^{15}N -labelled nitrate in a wet summer under different residue management regimes in young hoop pine plantations. *For Ecol Manage* 170(1–3):285–298
- Reddy KR, Rao PSC, Jessup RE (1990) Transformation and transport of ammonium nitrogen in a flooded organic soil. *Ecol Modelling* 51(3–4):205–216
- Reverchon F, Abdullah KM, Bai SH, Villafán E, Blumfield TJ, Patel B, Xu Z (2020) Biological nitrogen fixation by two Acacia species and associated root-nodule bacteria in a suburban Australian forest subjected to prescribed burning. *J Soils Sediments* 20(1):122–132
- Reverchon F, Xu Z, Blumfield TJ, Chen C, Abdullah KM (2012) Impact of global climate change and fire on the occurrence and function of understory legumes in forest ecosystems. *J Soils Sediments* 12(2):150–160
- Rui Y, Wang S, Xu Z, Wang Y, Chen C, Zhou X, Kang X, Lu S, Hu Y, Lin Q, Luo C (2011) Warming and grazing affect soil labile carbon and nitrogen pools differently in an alpine meadow of the Qinghai-Tibet Plateau in China. *J Soils Sediments* 11(6):903–914
- Sardans J, Urbina I, Grau O, Asensio D, Ogaya R, Peñuelas J (2020) Long-term drought decreases ecosystem C and nutrient storage in a Mediterranean holm oak forest. *Environ Exp Bot* 177:104135
- Savard M, Marion J, Bégin C (2020) Nitrogen isotopes of individual tree ring series—The validity of middle-to long-term trends. *Dendrochronologia* 62:125726
- Shen M, Chui TFM (2021) Characterizing the responses of local floods to changing climate in three different hydroclimatic regions across the United States. *Adv Water Resour* 150:103885
- Stewart SB, Elith J, Fedrigo M, Kasel S, Roxburgh SH, Bennett LT, Chick M, Fairman T, Leonard S, Kohout M, Cripps JK (2021) Climate extreme variables generated using monthly time-series data improve predicted distributions of plant species. *Ecography* 44(4):626–639
- Succarie A, Xu Z, Wang W, Liu T, Zhang X, Cao X (2020) Effects of climate change on tree water use efficiency, nitrogen availability and growth in boreal forest of northern China. *J Soils Sediments* 20(10):3607–3614
- Sun F, Kuang Y, Wen D, Xu Z, Li J, Zuo W, Hou E (2010) Long-term tree growth rate, water use efficiency, and tree ring nitrogen isotope composition of *Pinus massoniana* L. in response to global climate change and local nitrogen deposition in Southern China. *J Soils Sediments* 10(8):1453–65
- Takai Y, Kamura T (1966) The mechanism of reduction in waterlogged paddy soil. *Folia Microbiol* 11:304–313
- Takizawa Y, Chikaraishi Y (2017) Change in the $\delta^{15}\text{N}$ value of plant amino acids on the phenology of leaf flush and senescence. *Res Org Geochem* 33(1):1–6
- Taresh S, Bai SH, Abdullah KM, Zalucki J, Nessa A, Omidvar N, Wang D, Zhan J, Wang F, Yang J, Kichamu-Wachira E (2021) Long-term impact of prescribed burning on water use efficiency, biological nitrogen fixation, and tree growth of understory acacia species in a suburban forest ecosystem of subtropical Australia. *J Soils Sediments* 21(11):3620–3631
- Tomlinson G (2015) Tree responses to nitrogen deposition in a changing climate: using carbon and nitrogen stable isotopes in tree-rings and foliage (Doctoral dissertation, ETH Zurich)
- Unger IM, Kennedy AC, Muzika RM (2009) Flooding effects on soil microbial communities. *Appl Soil Ecol* 42(1):1–8
- Veijalainen N, Lotsari E, Alho P, Vehviläinen B, Käyhkö J (2010) National scale assessment of climate change impacts on flooding in Finland. *J Hydrol* 391(3–4):333–350
- Wang D, Abdullah KM, Tahmasbian I, Xu Z, Wang W (2020c) Impacts of prescribed burnings on litter production, nitrogen concentration, $\delta^{13}\text{C}$ and $\delta^{15}\text{N}$ in a suburban eucalypt natural forest of subtropical Australia. *J Soils Sediments* 20(8):3148–3157
- Wang D, Abdullah KM, Xu Z, Wang W (2020a) Water extractable organic C and total N: the most sensitive indicator of soil labile C and N pools in response to the prescribed burning in a suburban natural forest of subtropical Australia. *Geoderma* 377:114586

- Wang D, Xu Z, Blumfield TJ, Zalucki J (2020b) The potential of using ^{15}N natural abundance in changing ammonium-N and nitrate-N pools for studying in situ soil N transformations. *J Soils Sediments* 20(3):1323–1331
- Wang Q, Liu S, Wang Y, Tian P, Sun T (2018) Influences of N deposition on soil microbial respiration and its temperature sensitivity depend on N type in a temperate forest. *Agric for Meteorol* 260:240–246
- Wang Y, Xu Z, Zheng J, Abdullah KM, Zhou Q (2015) $\delta^{15}\text{N}$ of soil nitrogen pools and their dynamics under decomposing leaf litters in a suburban native forest subject to repeated prescribed burning in southeast Queensland. *Australia J Soils Sediments* 15(5):1063–1074
- Williams AP, Michaelsen J, Leavitt SW, Still CJ (2010) Using tree rings to predict the response of tree growth to climate change in the continental United States during the twenty-first century. *Earth Interact* 14(19):1–20
- Xu Y, Li W, Shao X, Xu Z, Nugroho P (2014) Long-term trends in intrinsic water-use efficiency and growth of subtropical *Pinus tabulaeformis* Carr. and *Pinus taiwanensis* Hayata in central China. *J Soils Sediments* 14(5):917–27
- Xu Z, Chen C, He J, Liu J (2009) Trends and challenges in soil research 2009: linking global climate change to local long-term forest productivity. *J Soils Sediments* 9(2):83–88
- Xue D, Yu H, Fang Y, Shan J, Xi D, Wang Y, Kuzyakov Y, Wang ZL (2020) ^{15}N -tracer approach to assess nitrogen cycling processes: nitrate reduction, anammox and denitrification in different pH cropland soils. *CATENA* 193:104611
- Yang HI, Park HJ, Lee KS, Lim SS, Kwak JH, Lee SI, Chang SX, Lee SM, Choi WJ (2018) $\delta^{13}\text{C}$, $\delta^{15}\text{N}$, N concentration, C/N, and Ca/Al of *Pinus densiflora* foliage in Korean cities of different precipitation pH and atmospheric NO_2 and SO_2 levels. *Ecol Indi* 88:27–36
- Yoshida N (1988) ^{15}N -depleted N_2O as a product of nitrification. *Nature* 335(6190):528–529
- Zhang H, Li X, Guan D, Wang A, Yuan F, Wu J (2021) Nitrogen nutrition addition mitigated drought stress by improving carbon exchange and reserves among two temperate trees. *Agric for Meteor* 311:108693
- Zhou S, Sun H, Bi J, Zhang J, Riya S, Hosomi M (2020) Effect of water-saving irrigation on the N_2O dynamics and the contribution of exogenous and endogenous nitrogen to N_2O production in paddy soil using ^{15}N tracing. *Soil till Res* 200:104610

Publisher's Note Springer Nature remains neutral with regard to jurisdictional claims in published maps and institutional affiliations.