

# A comparative study of heavy metal accumulation and antioxidant responses in *Vaccinium myrtillus* L. leaves in polluted and non-polluted areas

Marta Kandziora-Ciupa · Ryszard Ciepał ·  
Aleksandra Nadgórska-Socha ·  
Gabriela Barczyk

Received: 13 August 2012 / Accepted: 28 December 2012 / Published online: 15 January 2013  
© The Author(s) 2013. This article is published with open access at Springerlink.com

**Abstract** The purpose of this study was to explore a possible relationship between the availability of metals in soil (Cd, Fe, Mn, Pb and Zn) and their concentrations in leaves of *Vaccinium myrtillus* L. as a species which has been reported to be a successful colonist of acid-and-heavy metal-contaminated soil. Analysis also concerned the antioxidant response of plants from three heavily polluted (immediate vicinity of: zinc smelter, iron smelter and power plant) and three relatively clean sites (nature reserve, ecological site and unprotected natural forest community) in southern Poland. The contents of glutathione, non-protein thiols, protein, proline and activity of guaiacol peroxidase in leaves of bilberry were measured. Generally, the concentrations of metals in the HNO<sub>3</sub> and CaCl<sub>2</sub> extractions of the soil from the polluted sites were higher. Moreover, the antioxidant responses were also elevated in bilberries in the polluted sites. Significant positive relationships between Cd, Pb and Zn concentrations in soil and in the plants were found. In the leaves of *V. myrtillus* from the polluted sites, higher concentrations of Cd, Pb and Zn were noted (In Miasteczko Śląskie respectively 6.26, 157.09 and 207.17 mg kg<sup>-1</sup> d.w.). We found a positive correlation between the increase in the NPTs and protein contents as well as the Cd, Pb and Zn concentrations in *V. myrtillus*. Cd, Pb and Zn also decreased guaiacol peroxidase activity. However, the activity of this enzyme increased under Fe. A decreasing trend in glutathione contents was observed with increasing iron and

manganese concentrations in bilberry leaves. Parameters such as protein, non-protein –SH groups and changes in GPX activity seem to be universal, sensitive and correlated well with heavy metal stress.

**Keywords** Antioxidant response · Heavy metal · *Vaccinium myrtillus*

## Abbreviations

NPTs Non-protein thiols  
GSHt Glutathione total  
GPX Guaiacol peroxidase

## Introduction

*Vaccinium myrtillus* L. (bilberry) is a dwarf deciduous shrub which dominates plant life forms in the herbaceous layer of pine forests in temperate climates (Białońska et al. 2007; Martz et al. 2010). It is known to play an important role in natural succession and in regulating the nutrient fluxes of forest ecosystems and thus in their productivity (Mróz and Demczuk 2010). Bilberry possesses a relatively high resistance to pollution, and it has been reported to be a successful colonist of acid-and-heavy metal-contaminated soils (Uhlig and Junttila 2001; Mróz and Demczuk 2010). In view of this fact, *V. myrtillus* L. is common both in unpolluted and polluted habitats. The accumulation of elements in its foliage has been widely used in environmental monitoring (Reimann et al. 2001; Salemaa et al. 2004; Brekken and Steinnes 2004; Białońska et al. 2007).

Heavy metals are highly toxic to plants. Their uptake and accumulation by plant tissues cause various morphological,

Responsible editor: Elena Maestri

M. Kandziora-Ciupa (✉) · R. Ciepał · A. Nadgórska-Socha ·  
G. Barczyk  
Department of Ecology, University of Silesia, Bankowa 9,  
PL 40-007 Katowice, Poland  
e-mail: marta.kandziora-ciupa@us.edu.pl

physiological and biochemical responses (Doganlar and Atmaca 2011). Some metal ions are likely to remain in the cytoplasm and induce oxidative stress via generation of reactive oxygen species (ROS) such as hydrogen peroxide ( $H_2O_2$ ), superoxide and hydroxyl radicals which hinder cell metabolism and lead to multiple toxic effects like lipid peroxidation, protein cleavage or DNA damages (Prasad 1999; Unyayar et al. 2006; Dazy et al. 2008; Pongrac et al. 2009). Once formed, ROS must be detoxified as efficiently as possible to minimize damage. Antioxidant systems in plants are complex and involve an array of non-enzymatic and enzymatic mechanisms capable of preventing the cascades of uncontrolled oxidation (Gratão et al. 2005, 2008).

Glutathione is one of the crucial plant metabolites in terms of intracellular defense against ROS-induced oxidative damage (Gill and Tuteja 2010). Glutathione creates complexes with heavy metals, and an induction of glutathione as well as cysteine synthesis has been documented in plants as a response to heavy metal stress. The changes in glutathione total (GSht) level are dependent on the metal treatment and the part of plant (Arya et al. 2008; Nadgórska-Socha et al. 2012). Glutathione (GSH) is also the predominant non-protein thiol, redox buffer, phytochelatin precursor and substrate for keeping the ascorbate in reduced form in the ascorbate glutathione pathway (Demirevska-Kepova et al. 2004). Non-protein compounds rich in –SH groups (e.g. phytochelatins) are involved in metal detoxification and/or metal allocation between different organs of the plant because their main task is binding of metal ions and forming non-toxic complexes with a metal which are transported from the cytoplasm into the vacuole (Andrade et al. 2010; Yadav 2010).

Among amino acids, proline has been shown to have an important role (Sharma and Dietz 2006). Metal-induced proline accumulation has been observed, and it has been suggested that this amino acid acts as a radical scavenger, or it is involved in metal ion chelation (Andrade et al. 2009). In plants, proline constitutes <5 % of the total pool of free amino acids under normal conditions and represents 80 % of total amino acid pool under stress (Kumar et al. 2010).

Peroxidases are antioxidant enzymes which are significant in plant growth and development. Activities of these enzymes are changed under both biotic and abiotic stress conditions and are used as a potential indicator of metal toxicity (Radotić et al. 2000; Macfarlane and Burchett 2001; Baycu et al. 2006; Doganlar and Atmaca 2011).

Antioxidant systems in plants may be used as early indicators of environmental stress on a target organism before morphological or ultrastructural damage occurs. Moreover, they can also be used as warning indicators of the surrounding ecosystem (Białońska et al. 2007).

The objectives of the present study were to establish the concentrations of heavy metals as well as to determine and compare the levels of antioxidants (non-protein thiols,

glutathione and proline), antioxidant enzyme (guaiacol peroxidase) and proteins content in leaves of *V. myrtillus* L. growing naturally at polluted and potentially unpolluted areas. We also studied the potential availability of metals (Cd, Pb, Zn, Fe and Mn) in the soil originating from the same sites. Comparing analytical results of the heavy metals and ecophysiological changes in bilberry leaves, the following questions will be investigated:

1. Do investigated physiological parameters in bilberry plants from the polluted sites vary from the ones collected at non-contaminated sites?
2. Do ecophysiological parameters are good indicators of stress caused by heavy metals in plants living in field conditions?

## Material and methods

### Study area

The study was performed in typical pine forests located in three heavily polluted (immediate vicinity of: the zinc smelter, iron smelter and power plant) and three relatively clean sites (nature reserve, ecological site and unprotected natural forest community). All of the sites were situated in southern parts of Poland in the Śląskie or Małopolskie provinces (Table 1 and Fig. 1).

### Sample collection

Consideration of seasonal variations is essential during bio-monitoring programs (Oliva et al. 2012). Metal accumulation may depend on seasonal variation. Some publications report the highest foliar levels in spring and the lowest during winter, whereas others have indicated the highest metal contents during autumn and relatively low levels during spring (Martin and Couphtrey 1982; Kim and Fergusson 1994; Brekken and Steinnes 2004; Baycu et al. 2006; Deram et al. 2006). Use of biomarkers, such as our antioxidants in biomonitoring studies, is often complicated because levels of chemical pollutants in the environment often display wide seasonal variation in response to climate and other factors. That is why we decided to sample the material three times in order to minimize the effect of seasonal factors and show changes in antioxidant response induced by heavy metals during a growing season including the most important periods of the bilberry growth (flowering stage, fructification and end of growing season).

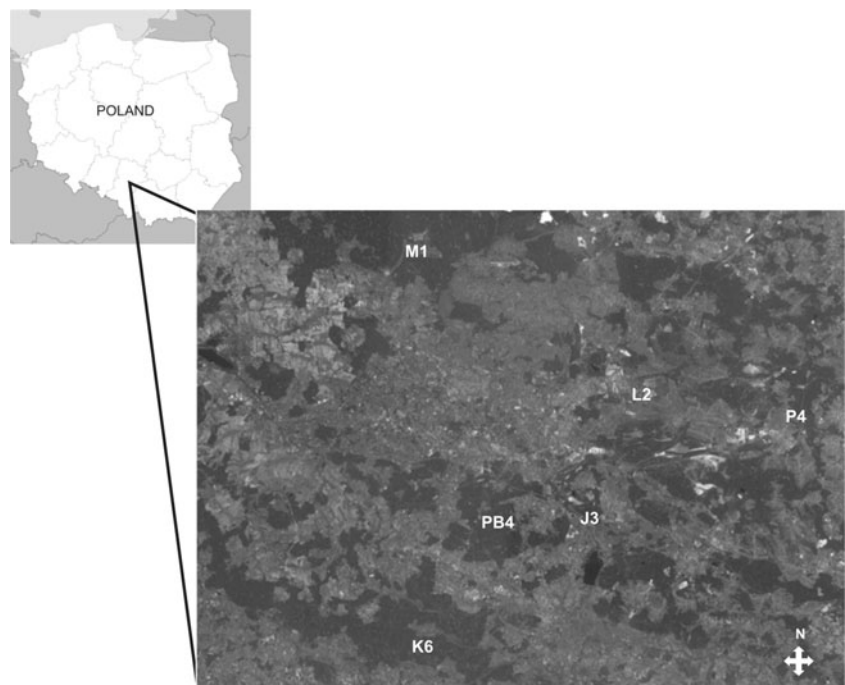
*V. myrtillus* L. leaves and soil samples were collected in May, July and September of 2009. Each sampling site consisted of 25×25-m squares within which leaf and soil samples were randomly collected. The fully matured, undamaged leaves were detached from at least 20 different shrubs and

**Table 1** Site description

Sampling site no.	Sites	Latitude	Longitude	Selected soil parameters (Kandziora-Ciupa unpublished data)
<b>Polluted</b>				
M1	Nearest vicinity of zinc smelter “Miasteczko Śląskie” in Miasteczko Śląskie (activities since 1968)	50°31'22.655"N	18°56'8.699"E	The contents of organic matter and C/N ratio are the lowest among all the sites, 7.10 % and 12.43, respectively. The pH is ~4.45; Ca, 346.34 mgkg <sup>-1</sup> ; Mg, 32.33 mgkg <sup>-1</sup> .
L2	Nearest vicinity of iron smelter “ArcelorMittal Poland S.A.” in Dąbrowa Górnicza-Łosień (activities since 1976)	50°22'0.768"N	19°19'22.979"E	The soil is richer in Ca and Mg, and pH is the highest compared with other sites (Ca, 3,166.17 mgkg <sup>-1</sup> , Mg, 165.88 mgkg <sup>-1</sup> , pH~4.97).
J3	Nearest vicinity of power plant “Jaworzno III” in Jaworzno (activities since 1979)	50°12'14.111"N	19°11'51.792"E	pH~4.30; organic matter, 26.48 %; C/N, 19.59; Ca, 2,552.34 mgkg <sup>-1</sup> ; Mg, 110.59 mgkg <sup>-1</sup> .
<b>Unpolluted</b>				
P4	Nature reserve “Pazurek” in Jaroszewiec Olkuski	50°19'59"N	19°37'24"E	The concentration of Mg is lowest among all sites—25.47 mgkg <sup>-1</sup> . pH~3.67; organic matter, 15.75 %; C/N, 17.24; Ca, 587.62 mgkg <sup>-1</sup> .
PB5	Ecological site “Płone Bagno” in Katowice	50°10'07"N	19°05'18"E	The organic matter content and C/N ratio are the highest compared with other sites (36.54 % and 20.59, respectively). pH~3.46; Ca, 443.30 mg kg <sup>-1</sup> ; Mg, 65.94 mgkg <sup>-1</sup> .
K6	Unprotected natural forest community in Kobiór	50°4'22.08"N	18°56'16.656"E	The pH (3.45) of the soil and concentration of Ca (308.82 mgkg <sup>-1</sup> ) are the lowest among all sites. Organic matter, 22.26 %; C/N, 16.86; Mg, 50.91 mgkg <sup>-1</sup>

pooled into one sample per site. After collection, samples were covered with plastic bags, deposited in ice, immediately transported to the laboratory and then frozen until analysis.

Soil sample were taken in the neighbourhood of the samples shrubs from a depth of 0–10 cm. At each site, soil sub-samples were combined in a composite sample.

**Fig. 1** Location map of sampling sites

### Analysis of metal concentration in the soil and samples of plants

The concentrations of Cd, Pb, Zn, Fe and Mn were analysed in particular soil fractions and in the leaves of *V. myrtillus* L. The metal content in soil was estimated according to the method of Bouwmann et al. (2001) and Ostrowska et al. (1991) in the air-dried soil samples, which were sieved through a 1-mm sieve. Metals were extracted from soil with 0.01 M CaCl<sub>2</sub> (potentially bioavailable elements) or with 2 M HNO<sub>3</sub> (acid extracted elements). For the CaCl<sub>2</sub> extraction, 5 g of soil with 50 ml of 0.01 M CaCl<sub>2</sub> solution was mechanically shaken for 5 h. The HNO<sub>3</sub>-extractable fraction was obtained by shaking 10 g of soil sample with 100 ml of 2 M HNO<sub>3</sub> for 1 h. The content of metals was measured in the filtered extracts by inductively coupled plasma-atomic emission spectroscopy (Spectro Analytical Instruments).

In order to determine the heavy metal concentrations in the leaves of bilberry, plant material was washed in a tap with distilled water and dried at 105 °C. A 0.25-g portion of dried plant material was treated with 5 ml of concentrated nitric acid and left for 24 h. Next, the samples were digested at 110 °C until complete mineralization was achieved. After mineralization, the samples were diluted with deionized water to a volume of 10 ml. Concentration of Cd, Pb, Zn, Fe and Mn was measured using inductively coupled plasma-atomic emission spectroscopy (Spectro Analytical Instruments). The quality of the analytical procedure was checked using a reference material (certified reference material CTA-OTL-1 Oriental Tobacco Leaves) with the same quantities of samples.

### Analysis of the biochemical parameters of the plants

Protein content was determined according to the method of Bradford (1976) using bovine serum albumin as a standard. Proline content was determined by the method of Bates et al. (1973). The plant material (0.5 g) was homogenized in 10 ml of sulfosalicylic acid (3 g per 100 ml), and the homogenate was filtered through Whatman No. 2 filter paper. The reaction mixture containing 2 ml of homogenate, 2 ml acid ninhydrin and 2 ml of glacial acetic acid was incubated at 100 °C for 1 h. The reaction mixture was placed on ice and extracted with 4 ml of toluene. The absorbance was read at 520 nm using toluene as the blank. The proline content was expressed in micromoles proline per gram of fresh weight.

To measure the GSHt concentration, plant parts (0.5 g) were homogenized in trichloroacetic acid (5 g per 100 ml) and 0.125 mM phosphate buffer (pH 6.3) with 6.3 mM ethylenediaminetetraacetic acid (EDTA) and were centrifuged at 10,000×g for 10 min at 4 °C. Supernatants were used for GSH determination using the DTNB–GSSG reductase recycling procedure according to Anderson (1985). The reaction mixture contained 0.2 ml of supernatant, 0.6 ml of

0.3 mM NADPH, 0.1 ml of 6 mM DTNB and 0.1 ml (0.5 IU ml<sup>-1</sup>) of glutathione reductase. The linear changes in the absorbance of the reaction mixtures were measured at 412 nm, and the GSHt was expressed as micromoles GSH per gram fresh weight.

The content of non-protein thiols was estimated as described by Mass et al. (1987). The plant material was homogenized in a 5 vol/g mixture containing 5-sulphosalicylic acid (2 g per 100 ml) and 1 mM EDTA and sodium ascorbate (0.15 g per 100 ml). The samples were centrifuged at 20,000×g for 10 min at 4 °C. Then, a 0.5-ml liquid supernatant, 0.5 ml of a 1 M sodium phosphate buffer (pH 8.0) and 100 µl of 10 mM 5,5'-dithio-bis (2-nitrobenzoic acid) (DTNB) were put into test tubes. The absorbance at 415 nm was read 1 min after the addition of DTNB. The number of non-protein SH groups was established based on a curve prepared using L-cysteine and expressed as nanomoles –SH per gram fresh weight.

For the analysis of guaiacol peroxidase, fresh plant material was homogenized in a 100-mM phosphate buffer (pH 6.8). The guaiacol peroxidase (GPX) activity was measured at 470 nm according to Fang and Kao (2000) and Liu et al. (2004) with guaiacol as the substrate. The GPX activity was measured in a reaction mixture (3 ml) containing a 50 mM phosphate buffer (pH 5.8), 1.6 µl H<sub>2</sub>O<sub>2</sub>, 1.5 µl guaiacol and 0.2 ml enzyme extract. The activity was calculated using the extinction coefficient (26 mM<sup>-1</sup>cm<sup>-1</sup>) for tetraguaiacol and was expressed in micromoles tetraguaiacol per gram fresh weight per minute.

### Statistical analysis

The data concerning the biochemical parameters and metal content were analysed, checked for normality and equality of variance. The data were analysed by ANOVA, and the treatments were treated as the independent variables. Significant statistical differences of all variables were established using the Tukey's test (ANOVA; Statistica 10 package). We also calculated the Pearson's correlation coefficient between the metal concentrations in separate soil extractions and in the leaves of *V. myrtillus*, and between the metal concentrations and biochemical parameters in the bilberry leaves. CANOCO 4.5 was used to carry out principal component analysis (PCA) which assessed the similarities and relations between heavy metal concentrations and biochemical parameters in the leaves of *V. myrtillus* in the studied areas.

## Results

### Heavy metal content and their availability in soil

There were significant differences in the content of the metals studied (HNO<sub>3</sub> extracted and CaCl<sub>2</sub> extracted)

between the polluted and potentially clean sites (Tables 2 and 3). Additionally, there was a clear difference in the concentrations of metals between the fraction of soil extracted with  $\text{HNO}_3$  and the fraction extracted with  $\text{CaCl}_2$ . Among the metals examined, the highest concentrations of Fe, Pb and Zn were measured in the acid-extracted soil fraction. A several times lower concentration of the metals examined was determined in the fraction of soil extracted with  $\text{CaCl}_2$ . The following descending order of bioavailability was found among the heavy metals:  $\text{Mn} > \text{Zn} > \text{Cd} > \text{Pb} > \text{Fe}$ .

#### Heavy metal concentration in plants

The mean values of heavy metal concentrations in *V. myrtillus* leaves were found in descending order:  $\text{Mn} > \text{Fe} > \text{Zn} > \text{Pb} > \text{Cd}$ . There was a clear increase in the concentration of the metals studied in leaves of *V. myrtillus* at polluted sites. The exception was Mn, with the highest content observed at P4, PB5 and K6 sites. In most cases, metal content in *V. myrtillus* leaves increased with each month of sampling (Table 4). We found a strong positive correlation between concentrations of Cd, Pb and Zn in separate soil extractants and in leaves of bilberry. The range of coefficients was 0.61–0.89 with  $p < 0.05$ . There was no correlation between the Fe and Mn concentrations in leaves and Fe and Mn concentrations measured in either of the two extractants (Table 5).

#### The biochemical status of the plants

At most sites, the total content of glutathione was by far the highest in May. The highest accumulation GSHt was found in *V. myrtillus* leaves from the M1 site—236.84  $\mu\text{mol GSHt}$

$\text{g}^{-1}$  fresh weight (Fig. 2). There were no clear differences in glutathione content between contaminated and potentially non-contaminated sites. In addition, there was a negative correlation between the GSHt content and the concentration of Fe and Mn in the leaves of *V. myrtillus* (Table 6).

The greatest concentration of non-protein –SH groups in the leaves of *V. myrtillus* during the entire growing season was observed in the most contaminated M1 site (1,497.33–1,800  $\text{nmol –SH g}^{-1}$  fresh weight) (Fig. 3). This dependence was confirmed by a positive correlation between non-protein –SH groups and the content of Cd, Pb and Zn in the leaves of bilberry (Table 6). At the other sites, the content of non-protein thiols (NPTs) was the lowest in May and the highest in July. As with the NPTs, the highest protein content was also noted at the M1 site (4.28  $\text{mg g}^{-1}$  fresh weight; Fig. 4). A significant positive correlation between protein content and concentration of Cd, Pb and Zn was found in the leaves of *V. myrtillus* (Table 6).

Guaiacol peroxidase activity was by far the highest in the leaves of *V. myrtillus* from the L2 site (5.43–9.60  $\mu\text{mol tetra-guaiacol g}^{-1}$  fresh weight  $\text{min}^{-1}$ ), where the leaves of bilberry had the highest concentration of iron (Fig. 5). Meanwhile, the lowest GPX activity was observed in July and September at M1 (0.63–0.67  $\mu\text{mol tetra-guaiacol g}^{-1}$  fresh weight  $\text{min}^{-1}$ ; Fig. 5). Guaiacol peroxidase activity in leaves of bilberries was positively correlated with Fe content, and negatively with the concentration of Cd, Pb and Zn (Table 6).

There were no significant differences in proline content between the contaminated and potentially non-contaminated sites (Fig. 6). There were also no significant correlations between proline content and the concentration of the examined metals in leaves of *V. myrtillus* (Table 6). PCA analysis

**Table 2** The concentration of selected metals (milligrams per kilogram) in fractions of the soils extracted with  $\text{HNO}_3$  (mean values  $\pm$  SE,  $n=5$ )

Element	Month site	M1	L2	J3	P4	PB5	K6
Cd	May	19.71 $\pm$ 2.35 c	7.80 $\pm$ 0.61 b	8.79 $\pm$ 0.16 b	2.76 $\pm$ 0.26 a	2.94 $\pm$ 0.06 a	0.68 $\pm$ 0.00 a
	July	13.72 $\pm$ 0.17 e	4.76 $\pm$ 0.20 d	4.23 $\pm$ 0.02 c	3.07 $\pm$ 0.05 c	4.77 $\pm$ 0.03 d	0.45 $\pm$ 0.02 a
	September	25.54 $\pm$ 0.56 d	4.22 $\pm$ 0.20 b	7.86 $\pm$ 0.70 c	1.33 $\pm$ 0.06 a	5.30 $\pm$ 0.37 b	0.85 $\pm$ 0.03 a
Fe	May	931.40 $\pm$ 65.50 a	2,321.90 $\pm$ 107.00 d	2,960.90 $\pm$ 82.00 e	1,205.40 $\pm$ 103.50 b	3,428.40 $\pm$ 2.50 f	1,577.40 $\pm$ 33.50 c
	July	1,151.40 $\pm$ 11.00 a	1,345.90 $\pm$ 55.00 b	1,947.90 $\pm$ 25.00 e	1,208.40 $\pm$ 11.50 a	1,652.40 $\pm$ 6.50 d	1,545.90 $\pm$ 6.00 c
	September	1,460.40 $\pm$ 59.50 b	1,247.90 $\pm$ 9.00 a	3,586.40 $\pm$ 108.50 e	2,129.90 $\pm$ 44.00 c	2,658.90 $\pm$ 22.00 d	2,560.40 $\pm$ 10.50 d
Mn	May	35.27 $\pm$ 2.95 b	194.30 $\pm$ 13.90 d	111.55 $\pm$ 1.35 c	17.20 $\pm$ 0.57 a	8.59 $\pm$ 0.28 a	6.84 $\pm$ 0.33 a
	July	49.96 $\pm$ 0.54 d	94.70 $\pm$ 4.70 e	47.41 $\pm$ 0.86 c	26.70 $\pm$ 0.22 b	7.53 $\pm$ 0.06 a	3.73 $\pm$ 0.09 a
	September	39.42 $\pm$ 2.21 b	71.35 $\pm$ 1.35 c	120.85 $\pm$ 7.95 d	1.89 $\pm$ 0.23 a	8.48 $\pm$ 0.64 a	4.43 $\pm$ 0.22 a
Pb	May	674.49 $\pm$ 76.50 e	362.14 $\pm$ 20.15 c	481.14 $\pm$ 3.15 d	224.54 $\pm$ 19.85 ab	316.44 $\pm$ 7.95 bc	175.84 $\pm$ 40.25 a
	July	1,655.49 $\pm$ 8.50 e	239.44 $\pm$ 10.15 c	287.89 $\pm$ 2.00 d	253.64 $\pm$ 3.05 c	182.59 $\pm$ 0.50 b	81.64 $\pm$ 1.25 a
	September	1,874.99 $\pm$ 45.00 e	235.19 $\pm$ 6.90 bc	524.44 $\pm$ 35.55 d	174.74 $\pm$ 8.15 ab	265.79 $\pm$ 8.90 c	124.59 $\pm$ 0.90 a
Zn	May	856.50 $\pm$ 97.50 d	559.50 $\pm$ 39.50 c	486.85 $\pm$ 11.35 c	144.90 $\pm$ 13.30 b	85.60 $\pm$ 0.70 ab	19.17 $\pm$ 0.43 a
	July	430.75 $\pm$ 3.55 f	321.40 $\pm$ 10.20 e	234.20 $\pm$ 0.80 d	149.80 $\pm$ 2.20 c	76.80 $\pm$ 0.10 b	36.80 $\pm$ 8.37 a
	September	871.50 $\pm$ 2.50 e	260.65 $\pm$ 12.35 c	479.80 $\pm$ 33.20 d	47.69 $\pm$ 4.01 a	149.45 $\pm$ 8.45 b	54.55 $\pm$ 3.05 b

The different letters denote significant differences between the particular metal concentrations in the same month ( $p < 0.05$ )

**Table 3** The concentration of selected metals (milligrams per kilogram) in fractions of the soils extracted with CaCl<sub>2</sub> (mean values±SE, n=5)

Element	Month site	M1	L2	J3	P4	PB5	K6
Cd	May	5.44±0.19 d	0.36±0.00 ab	0.83±0.12 c	0.79±0.14 bc	0.82±0.10 c	0.18±0.04 a
	July	4.82±0.15 d	0.20±0.00 a	0.51±0.01 b	0.46±0.01 b	1.34±0.01 c	0.16±0.01 a
	September	8.59±0.34 d	0.50±0.02 ab	0.87±0.01 b	0.58±0.01 ab	1.31±0.08 c	0.29±0.00 a
Fe	May	1.79±0.01 a	1.66±0.07 a	14.51±11.34 ab	26.48±0.42 b	61.90±7.45 c	24.31±5.05 b
	July	1.84±0.02 b	1.18±0.02 a	3.60±0.17 c	4.31±0.07 d	22.62±0.24 e	35.68±0.32 f
	September	14.25±10.44 b	1.02±0.01 a	6.91±0.42 ab	41.30±2.45 c	46.80±1.25 c	48.10±0.75 c
Mn	May	10.82±0.65 a	10.65±0.38 a	12.68±6.79 a	7.91±0.13 a	9.67±1.49 a	6.24±1.37 a
	July	14.17±0.87 b	3.54±0.02 a	4.25±0.11 a	3.94±0.03 a	12.86±7.52 b	2.74±0.11 a
	September	24.54±0.32 c	6.99±0.31 b	24.89±1.18 c	2.32±0.01 a	6.69±0.09 a	3.06±0.52 a
Pb	May	3.36±2.61 a	1.14±0.11 a	6.74±2.19 b	4.53±0.07 a	2.72±0.01 a	1.75±0.74 a
	July	37.20±0.75 d	0.96±0.06 a	8.97±0.10 c	2.63±0.27 a	2.82±0.08 b	1.56±0.18 a
	September	22.29±1.80 c	1.24±0.49 a	3.43±0.54 a	8.46±0.10 b	3.50±0.04 a	1.86±0.64 a
Zn	May	341.00±13.50 c	37.18±0.57 ab	72.10±29.35 b	60.63±8.32 b	35.73±4.33 ab	10.28±1.68 a
	July	212.28±8.52 d	21.60±0.44 b	39.70±0.30 c	36.85±0.80 c	32.50±0.25 c	8.57±0.08 a
	September	477.75±0.25 f	49.00±2.50 c	83.35±0.45 e	30.35±0.35 b	73.93±1.98 d	20.75±0.10 a

The different letters denote significant differences between the particular metal concentrations in the same month (*p*<0.05)

confirmed a strong correlation between the concentration of Cd, Pb and Zn, and the content of non-protein –SH groups and protein. It also showed a strong link between NPTs and total glutathione content. These relationships are best reflected in the most polluted area (M1). The analysis also demonstrated the close correlation between the activity of GPX and Fe content in leaves of *V. myrtillus* at the L2 site (Fig. 7).

**Discussion**

The prediction of bioavailability of metals is of crucial importance for the assessment of environmental quality of contaminated soil (Gupta and Sinha 2007). The distribution and abundance of total metal concentrations are useful indicators of the extent of soil contamination (Tokalioglu et al. 2000; Xiao et al. 2011; Dao et al. 2012), but risk from

**Table 4** The concentrations of heavy metals (milligrams per kilogram dry weight) in the leaves of *V. myrtillus* (mean values±SE, n=5)

Element	Site month	M1	L2	J3	P4	PB5	K6	Sufficient or normal <sup>a</sup>	Excessive or toxic <sup>a</sup>
Cd	May	1.21±0.13 c	0.86±0.09 b	nd	0.34±0.02 a	nd	nd		
	July	1.63±0.11 c	0.86±0.09 b	nd	0.41±0.01 a	nd	nd	0.05–0.2	5–30
	September	6.26±0.22 d	0.88±0.07 c	nd	0.44±0.01 b	0.98±0.14 c	0.09±0.07 a		
Fe	May	68.00±0.48 e	127.75±2.00 f	53.45±0.83 d	50.54±0.52 c	14.73±0.07 b	9.36±0.00 a		
	July	68.97±0.00 c	164.29±0.00 e	52.95±2.70 b	13.52±9.50 a	90.25±8.67 d	71.74±2.38 c	–	–
	September	118.24±1.15 d	409.49±6.33 f	50.94±0.65 b	90.17±16.48 c	240.15±9.00 e	11.26±2.21 a		
Mn	May	38.82±1.03 a	74.81±2.52 b	182.49±1.50 c	282.99±9.00 e	267.16±0.17 d	257.66±10.00 d		
	July	45.99±1.93 a	97.84±0.68 a	280.82±28.50 b	460.49±71.83 c	1,138.99±103.67 e	917.66±1.33 d	30–300	400–1,000
	September	45.99±3.77 a	99.47±3.82 a	397.99±1.33 b	600.99±14.33 c	1,056.16±69.83 d	610.82±145.50 c		
Pb	May	35.88±6.08 b	13.44±1.43 a	10.97±6.96 a	3.56±0.35 a	9.39±0.94 a	9.39±2.42 a		
	July	54.94±3.32 c	7.56±0.59 a	8.77±0.81 a	10.40±3.09 a	23.83±3.70 b	14.39±2.58 a	5–10	30–300
	September	157.09±2.13 d	8.80±0.15 a	7.76±1.58 a	6.92±0.74 a	40.13±0.83 c	14.92±1.68 b		
Zn	May	69.73±0.63 f	19.82±0.45 d	13.48±0.48 b	17.92±0.42 c	26.85±0.12 e	11.21±0.63 e		
	July	97.98±0.08 e	26.38±0.18 c	21.58±1.18 b	35.53±0.13 b	38.60±2.40 d	17.08±0.15 a	27–150	100–400
	September	207.17±5.50 d	36.80±0.13 b	17.90±0.27 a	21.12±1.75 a	72.32±0.25 c	20.78±4.29 a		

The different letters denote significant differences between the particular metal concentrations in the same month (*p*<0.05)

<sup>a</sup> According to Kabata-Pendias and Pendias 2001

**Table 5** The correlation coefficients between the concentrations of particular metals in separate soil extracants (with HNO<sub>3</sub> or CaCl<sub>2</sub>) and in the leaves of *V. myrtillus* ( $p < 0.05$ )

	Cd		Fe		Mn		Pb		Zn	
	HNO <sub>3</sub>	CaCl <sub>2</sub>	HNO <sub>3</sub>	CaCl <sub>2</sub>	HNO <sub>3</sub>	CaCl <sub>2</sub>	HNO <sub>3</sub>	CaCl <sub>2</sub>	HNO <sub>3</sub>	CaCl <sub>2</sub>
Leaves of <i>V. myrtillus</i>	0.81	0.86	NS	NS	NS	NS	0.85	0.61	0.62	0.89

NS not significant

metals depends on their bioavailability (Prokop et al. 2003; van Gestel 2008; Dao et al. 2012). A large part of biomonitoring research consists in the comparison of bioavailable fractions of metals (extracted with CaCl<sub>2</sub>) with their total concentration or pseudo-total (extracted, e.g. 2 M HNO<sub>3</sub>) in soil (Ullrich et al. 1999; Peijnenburg and Jager 2003; Pueyo et al. 2004; Keller and Hammer 2004). The assessment of the environmental risk requires the determination of not only total metal concentrations in soils but also the bioavailable fraction (Dao et al. 2012).

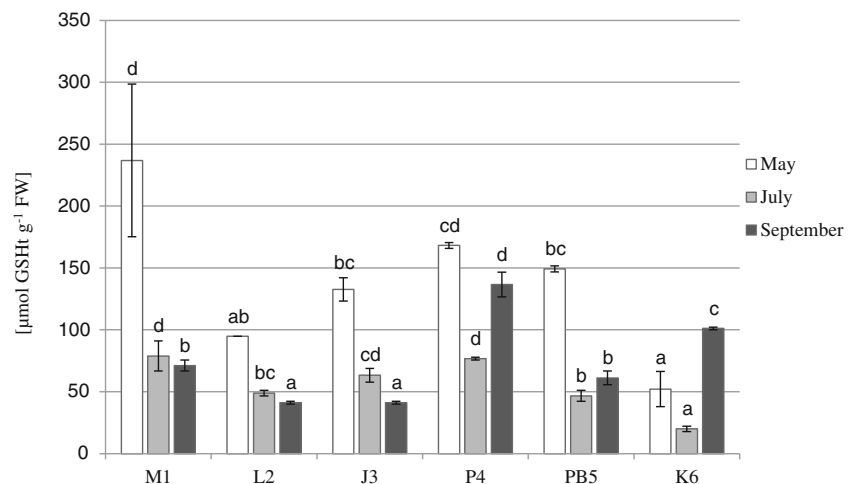
There was a clear difference between the concentration of the studied metals in the potentially bioavailable extracted fraction of CaCl<sub>2</sub>, and HNO<sub>3</sub> extracted fraction at all the studied sites (Tables 2 and 3). Some differences in the metal concentration sequences in the examined soil extracts and leaves of *V. myrtillus* were found. The order of metals in the soil fraction extracted with HNO<sub>3</sub> was as follows: Fe>Pb>Zn>Mn>Cd, and for the CaCl<sub>2</sub> extracts, it was Mn>Zn>Cd>Pb>Fe, while the range of metal contamination in the leaves was in the following order: Mn>Fe>Zn>Pb>Cd.

A similar trend was observed by Celik et al. (2005) in *Robinia pseudoacacia* (Fe>Mn>Zn>Pb>Cu>Cd), Kafel et al. (2010) in the leaves of *Philadelphus coronarius* (Zn>Ni>Pb>Cu>Cd) and Kozanecka et al. (2002) in different plant species from the non-polluted areas of eastern Poland (Zn>Cu>Ni>Pb>Cr>Cd). An increase of Cd, Pb and Zn in the leaves of *V. myrtillus* was strongly associated with the

increased concentrations of these metals in both studied soil fractions (Table 5). A significantly higher level of Cd, Pb and Zn was found in the leaves of *V. myrtillus* collected at the site located near the zinc smelter (M1) in comparison with other potentially contaminated areas and those free of contamination (Table 4). Levels of these three metals exceeded values considered as normal, and at the end of the growing season, in September, the levels exceeded values considered toxic for plants (according to Kabata-Pendias and Pendias 2001). Higher content of Zn (298 mgkg<sup>-1</sup>), but lower Pb (8.93 mgkg<sup>-1</sup>) and Cd (3.20 mgkg<sup>-1</sup>) than in the presented study were found in the leaves of bilberries by Białońska et al. (2007) near the Zn–Pb smelter in Bukowno. The concentration of Mn (Table 4) in the leaves of *V. myrtillus* at sites classified as unpolluted (P4, PB5 and K6) in most cases exceeded values considered as toxic to plants (according to Kabata-Pendias and Pendias 2001).

The ericaceous species, especially *V. myrtillus*, are distinguished by a high element content of Mn, irrespective of the content in the soil (Reimann et al. 2001; Salemaa et al. 2004; Mróz and Demczuk 2010). Mróz and Demczuk (2010) suggested that *V. myrtillus* is an accumulator of Mn, and such high concentrations of this element suggest a possibility that bilberry uses Mn for some beneficial purposes. At the other sites, the concentration of Cd, Pb, Zn, Fe and Mn was similar to other uncontaminated sites reported in the literature (Reimann et al. 2001; Kozanecka et

**Fig. 2** Total glutathione contents (micromoles GSht per gram fresh weight) in *V. myrtillus* leaves (mean values±SE, n=5). Different letters above the columns indicate significant differences in the same month ( $p < 0.05$ )



**Table 6** The correlation coefficients between metal concentration and antioxidant measurements in the leaves of *V. myrtillus* ( $p < 0.05$ )

	Cd	Fe	Mn	Pb	Zn
GSht	NS	-0.30	-0.33	NS	NS
NPTs	0.31	NS	NS	0.38	0.40
Protein	0.66	NS	NS	0.64	0.65
GPX	-0.29	0.30	NS	-0.36	-0.37
Proline	NS	NS	NS	NS	NS

NS not significant

al. 2002; Brekken and Steinnes 2004; Salemaa et al. 2004). In most cases, there was an increase in heavy metal accumulation in the leaves of *V. myrtillus* with each subsequent month when samples were collected.

Enzymatic antioxidant and non-enzymatic are important in heavy metals' plants defense (Gill and Tuteja 2010). A variation in the level of antioxidants was also noticed. Plants from polluted and unpolluted sites varied in glutathione total and proline content, -SH groups contents and the level of GPX activity.

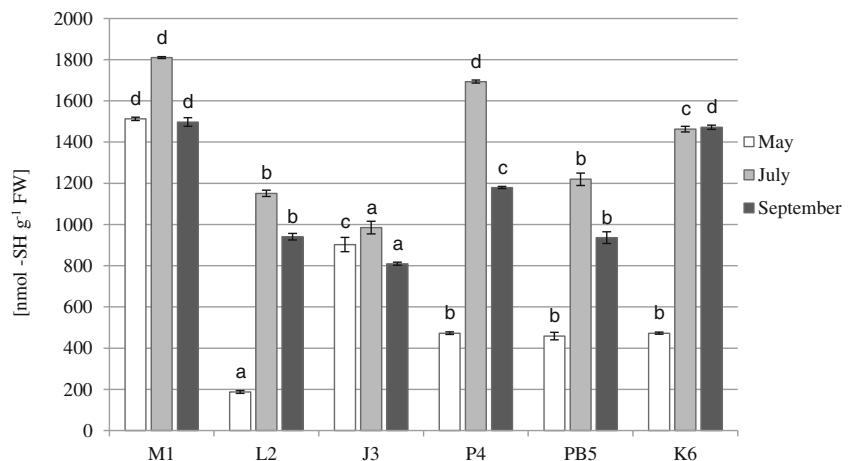
Glutathione is the most important low molecular weight biological thiol and is crucial for detoxification of heavy metals (Yadav 2010). In our study, we found GSht decline due to increased concentrations of Fe and Mn (Table 6). In many cases, exposure to heavy metals initially resulted in a severe depletion of glutathione (Cu or Cd at *Arabidopsis*—Xiang and Oliver 1998; Ni and Zn at *Cajanus cajan*—Madhava Rao and Sresty 2000; Cd at pine—Schützendübel et al. 2001; Pb at *Raphanus sativus*—El-Beltagi and Mohamed 2010; Pb at *Vicia faba* and *Phaseolus vulgaris*—Piechalak et al. 2002). The decline in the glutathione content of plants may result from the inhibition of the enzymes involved in glutathione synthesis by toxic metal ions. In addition, the depletion of glutathione pool may also be considered to play some role in the synthesis of phytochelatins (Madhava Rao and Sresty 2000). Sudhakar et al. (2006) showed that

exposure of *Hydrilla verticillata* (L.f) Royle to high doses of copper led to a decrease in GSH and an elevation in PC levels. Boojar and Tavakoli (2010) found a similar dependency in *Alhagi camemelorum* Fisch.

Tolerance toward metals correlates well with the level of non-protein thiols which include not only glutathione but also thiol-rich peptides known as phytochelatins and other SH-rich compounds (Kafel et al. 2010). Molecules containing sulphur, which exist in a wide variety in cells, may fulfill different functions and may be independently regulated (Mishra et al. 2009). In our study, an increase of the NPT content was noticed in the leaves of *V. myrtillus* grown at a polluted site (Fig. 3). Additionally, the content of non-protein thiols was positively related with concentrations of Cd, Pb and Zn (Table 6 and Fig. 7). This was similar to the study of Nadgórska-Socha et al. (2011) who observed an increase in non-protein -SH group content in leaves of *Silene vulgaris* populations on the substrate with Cd and combination of metals (Zn, Cd and Pb). Also, Mishra et al. (2009) found a strong positive correlation between NPTs and Cd content in plants of *Ceratophyllum demersum* L. The increase in non-protein thiols levels indicates an ability to tolerate the cellular metal load (Mishra et al. 2006).

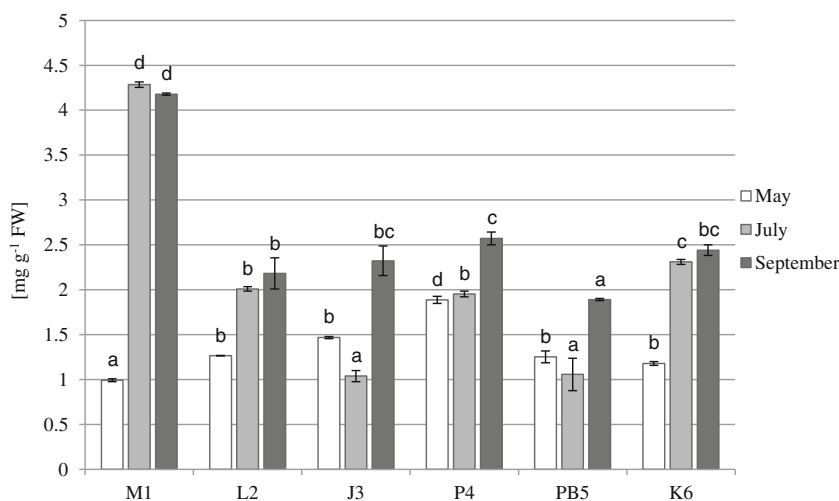
One of the mechanisms affected by heavy metals in plants is protein synthesis. It is known that soluble protein content is an important indicator of physiological status of plants (Doganlar and Atmaca 2011). In this study, we noticed a significant increase in protein content of bilberry leaves from most polluted site (Fig. 4), and we found a strong positive correlation between protein content and Cd, Pb and Zn concentrations (Table 6 and Fig. 7). Similarly, Doganlar and Atmaca (2011) reported that an increase in total soluble protein contents related to Al concentration in leaves of *Platanus orientalis* and Zn concentration in leaves of *Melia azaderach*. Mesmar and Jaber (1991) found increased total protein with increasing lead concentration in wheat and lentil, and Singh et al. (2006) reported increased protein contents in *Oryza sativa* plants under Cd stress. The increase in protein

**Fig. 3** Non-protein -SH groups content (nanomoles -SH per gram fresh weight) in *V. myrtillus* leaves (mean values ± SE, n=5). Different letters above the columns indicate significant differences in the same month ( $p < 0.05$ )





**Fig. 4** Protein contents (milligrams per gram fresh weight) in *V. myrtillus* leaves (mean values $\pm$ SE,  $n=5$ ). Different letters above the columns indicate significant differences in the same month ( $p<0.05$ )



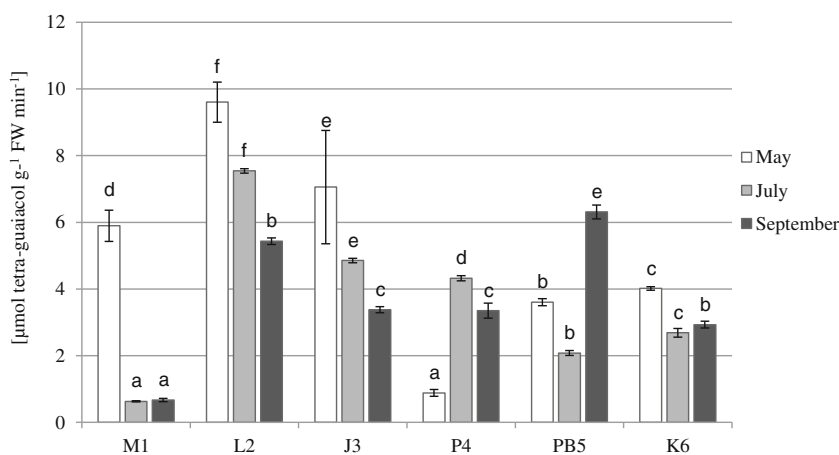
content may be a specific mechanism thanks to which cells compensate for the protein content that have been deactivated due to metal binding, and also the effect of the increasing content of stress proteins (Mesmar and Jaber 1991; Seregin and Ivanov 2001).

Peroxidases are antioxidant enzymes which play a crucial role in plant growth and development, and activities of these enzymes are changed under both abiotic and abiotic stress conditions (Doganlar and Atmaca 2011). In this study, in the leaves of *V. myrtillus* the highest GPX activity was observed in the vicinity of iron smelter at the L2 site. The lowest values of guaiacol peroxidase activity were at M1 (Fig. 5). An increase in GPX activity in leaves of *V. myrtillus* was observed under the influence of Fe and its reduction in the presence of Cd, Pb and Zn (Table 6 and Fig. 7). Many authors reported increased GPX activity increased content of heavy metals (Macfarlane and Burchett 2001; Markkola et al. 2002; Hagemeyer 2004; Kafel et al. 2010; El-Beltagi and Mohamed 2010; Doganlar and Atmaca 2011). The positive relationship between metal content and GPX activity was also reported by Nadgórska-Socha et al. (2008) in the leaves of *Philadelphus coronarius* Linne from a highly

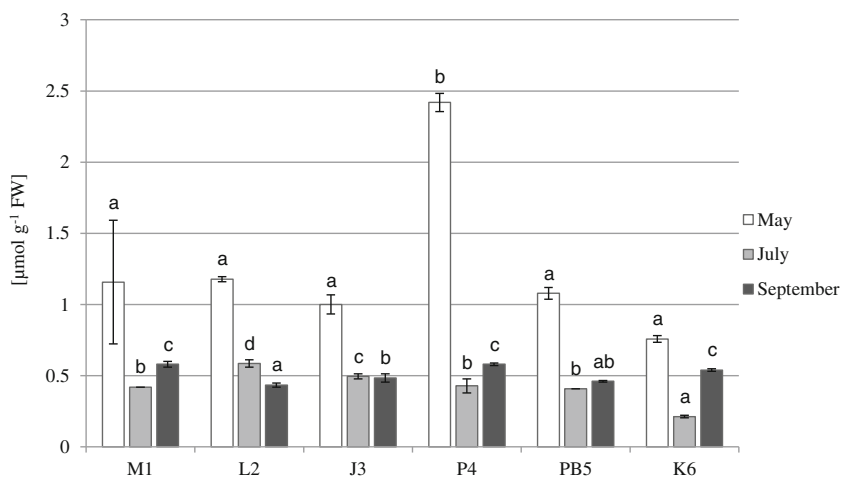
urbanized area of Krakow. However, Baycu et al. (2006), in their examination of peroxidase activity in leaves of *Acer* and *Alianthus* growing in the urban parks of Turkey, observed both increased and decreased peroxidase activity compared to controls. Pongrac et al. (2009) reported no change in GPX activity in *Thlaspi praecox* and *Thlaspi caerulescens* in the presence of Cd and Zn; similar results were obtained by Gratão et al. (2008) in leaves, roots and fruits of tomato grown in conditions of cadmium contamination. Similar to our work, Sandalio et al. (2001) observed a decrease in peroxidase activity and other antioxidant enzymes in pea under the influence of Cd. Similar to the work of Stobrawa and Lorenc-Plucińska (2007), at most sites GPX activity was the highest in spring. Perhaps this is connected with the fact that peroxidases, while controlling the level of hydrogen peroxide, at the same time catalyze the synthesis of lignin–phenol polymers, a process that is most intense after the winter rest, i.e. in spring (Stobrawa and Lorenc-Plucińska 2007).

Accumulation of free proline in response to the impact of heavy metals is a widespread phenomenon among many plant species (Schat et al. 1997, Chen et al. 2004, Tripathi

**Fig. 5** Guaiacol peroxidase activity (micromoles tetra-guaiacol per gram fresh weight per minute) in *V. myrtillus* leaves (mean values $\pm$ SE,  $n=5$ ). Different letters above the columns indicate significant differences in the same month ( $p<0.05$ )



**Fig. 6** Proline contents (micromoles per gram fresh weight) in *V. myrtillus* leaves (mean values±SE, n=5). Different letters above the columns indicate significant differences in the same month (p<0.05)

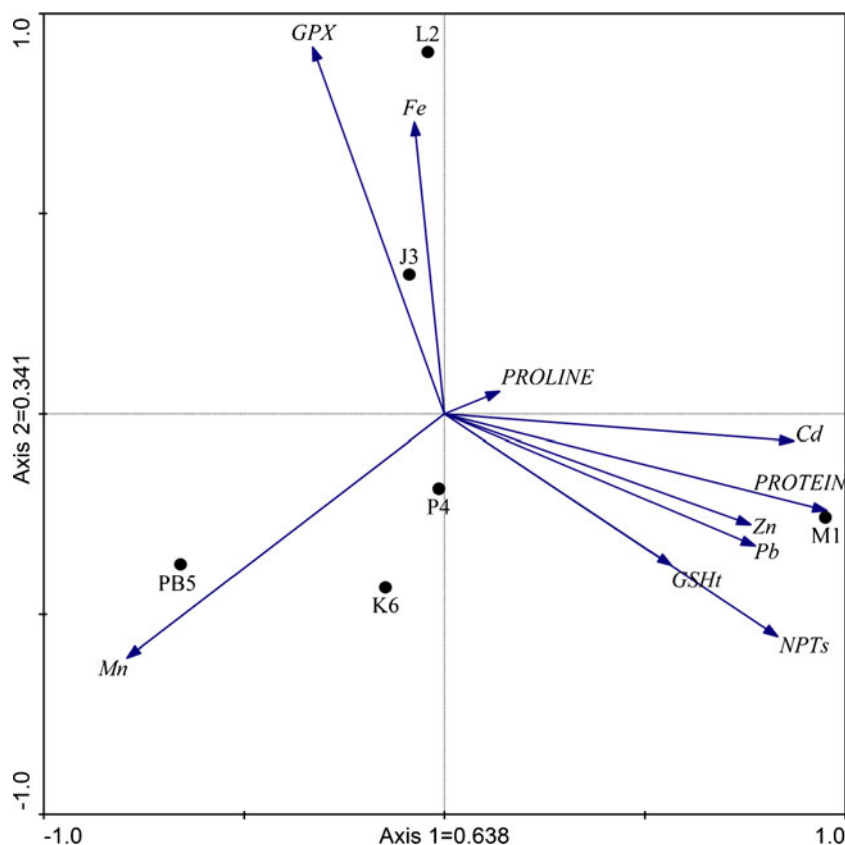


and Gaur 2004; Balestrasse et al. 2005; Sharma and Dietz 2006; Abdel-Latif 2008). Numerous studies have shown that the content of free proline depends on plant species and varies between organs. Moreover, proline concentration depends on the type of metal and its concentration (Sharma and Dietz 2006; Abdel-Latif 2008). Nikolić et al. (2008) found a significantly higher accumulation of free proline in the roots than in leaves of hybrid poplar under the influence of cadmium. Sharma and Dietz (2006) reported an increase in free proline accumulation in response to increased

accumulation of heavy metals in several plant species (*Cajanus cajan*, *Vigna mung*, *Helianthus annuus*, *Lemna minor*, *Triticum aestivum*, *Lactuca sativa*, *Silene vulgaris*, *O. sativa*). However, our tests have not found any significant effect of heavy metals on the accumulation of proline in the leaves of *V. myrtillus*. Proline content in leaves of bilberries only slightly differed between the various research sites.

It is difficult to draw unambiguous, major conclusions from research carried out in the field conditions because such experiments can be affected by environmental factors.

**Fig. 7** Principal component analysis (PCA) biplot of sampling sites and heavy metal concentrations and biochemical parameters in the leaves of *V. myrtillus*



Nevertheless, multi-parameters approach provided understanding of the diverse responses and effects of exposure to contaminants, and the effective risk it poses for different plant species (Stobrawa and Lorenc-Plucińska 2007; Fonseca et al. 2011; Oliva et al. 2012).

Based on our study, we propose the following conclusions: An increase in content of protein and non-protein SH groups and changes in GPX activity in the leaves of *V. myrtilillus* from polluted areas could be the evidence of an enhancement of the oxidative stress. Since these parameters seem to be universal, sensitive and correlated well with heavy metals stress, they could be good biochemical tools to predict heavy metal pollution.

**Acknowledgments** This work was financially supported by the Polish State Committee for Scientific Research, Project No. NN304 378938.

**Open Access** This article is distributed under the terms of the Creative Commons Attribution License which permits any use, distribution, and reproduction in any medium, provided the original author(s) and the source are credited.

## References

- Abdel-Latif A (2008) Cadmium induced changes in pigment content, ion uptake, proline content and phosphoenolpyruvate carboxylase activity in *Triticum aestivum* seedlings. *Aust J Basic Appl Sci* 2 (1):57–62
- Anderson ME (1985) Determination of glutathione and glutathione disulfide in biological samples. *Methods Enzymol* 113:548–555
- Andrade SAL, Gratão PL, Azevedo RA, Silveira APD, Schiavinato MA, Mazzafera P (2010) Biochemical and physiological changes in Jack bean under mycorrhizal symbiosis growing in soil with increasing Cu concentrations. *Environ Exp Bot* 68:198–207
- Andrade SAL, Gratão PL, Schiavinato MA, Silveira APD, Azvedo RA, Mazzafera P (2009) Zn uptake, physiological response and stress attenuation in mycorrhizal jack bean growing in soil with increasing Zn concentrations. *Chemosphere* 75:1363–1370
- Arya SK, Khaliq S, Roy BK (2008) Glutathione and cysteine biosynthesis in two varieties of *Abelmoschus esculentus* in response to mine spoil. *J Environ Biol* 29(1):93–99
- Balestrasse KB, Gallego SM, Benavides MP, Tomaro ML (2005) Polyamines and proline are affected by cadmium stress in nodules and roots of soybean plants. *Plant Soil* 270:343–353
- Bates L, Waldren R, Teare D (1973) Rapid determination of free proline for water-stress studies. *Plant Soil* 39:205–207
- Baycu G, Tolunay D, Özden H, Guenenebakan S (2006) Ecophysiological and seasonal variations in Cd, Pb, Zn and Ni concentrations in the leaves of urban deciduous trees in Istanbul. *Environ Pollut* 143:545–554
- Białońska D, Zobel A, Kuraś M, Tykarska T, Sawicka-Kapusta K (2007) Phenolic compounds and cell structure in bilberry leaves affected by emissions from a Zn–Pb smelter. *Water Air Soil Poll* 181:123–133
- Boojar MMA, Tavakoli Z (2010) Role of antioxidant enzyme responses and phytochelatin in tolerance strategies of *Alhagi camelorum* Fisch growing on copper mine. *Acta Bot Croat* 69(1):107–121
- Bouwman L, Bloem J, Römkens P, Boon G, Vangronsveld J (2001) Beneficial effects of the growth of metal tolerant grass on biological and chemical parameters in copper- and zinc contaminated sandy soils. *Minerva Biotech* 13:19–26
- Bradford M (1976) A rapid and sensitive method for the quantization of microgram quantities of protein utilizing the principle of protein dye binding. *Anal Biochem* 44:276–287
- Brekken A, Steinnes E (2004) Seasonal concentrations of cadmium and zinc in native pasture plants: consequences for grazing animals. *Sci Total Environ* 326:181–195
- Celik A, Kartal AA, Akdoğan A, Kaska Y (2005) Determining the heavy metal pollution in Denizli (Turkey) by using *Robinio pseudo-acacia* L. *Environ Int* 31:105–112
- Chen CT, Chen TH, Lo KF, Chiu CHY (2004) Effects of proline on copper transport in rice seedlings under excess copper stress. *Plant Sci* 166(1):103–111
- Dao L, Morrison L, Kiely G, Zhang Ch (2012) Spatial distribution of potentially bioavailable metals in surface soils of a contaminated sports ground in Galway, Ireland. *Environ Geochem Health*. doi:10.1007/s10653-012-9478-7
- Dazy M, Jung V, Ferard JF, Masfarau JF (2008) Ecological recovery of vegetation on a coke-factory soil: role of plant antioxidant enzymes and possible implications in site restoration. *Chemosphere* 74:57–63
- Demirevska-Kepova K, Simova-Stoilova L, Stoyanova Z, Holzer R, Feller U (2004) Biochemical changes in barley plants after excessive supply of copper and manganese. *Environ Exp Bot* 52:253–266
- Deram A, Denayer FO, Petit D, Van Haluwyn C (2006) Seasonal variations of cadmium and zinc in *Arrhenatherum elatius*, a perennial grass species from highly contaminated soils. *Environ Pollut* 140:62–70
- Doğanlar Z, Atmaca M (2011) Influence of airborne pollution on Cd, Zn, Pb, Cu, and Al accumulation and physiological parameters of plant leaves in Antakya (Turkey). *Water Air Soil Poll* 214(1/4):509–523
- El-Beltagi H, Mohamed AA (2010) Changes in nonprotein thiols, some antioxidant enzymes activity and ultrastructural alteration in radish plant (*Raphanus sativus* L) grown under lead toxicity. *Not Bot Hort Agrobot Cluj* 38(3):76–85
- Fang WC, Kao C (2000) Enhanced peroxidase activity in rice leaves in response to excess iron, copper and zinc. *Plant Sci* 158:71–76
- Fonseca VF, França S, Serafim A, Company R, Lopes B, Bebianno MJ, Cabral HM (2011) Multi-biomarker responses to estuarine habitat contamination in three fish species: *Dicentrarchus labrax*, *Solea senegalensis* and *Pomatoschistus microps*. *Aquat Toxicol* 102(3–4):216–227
- Gill SS, Tuteja N (2010) Reactive oxygen species and antioxidant machinery in abiotic stress tolerance in crop plants. *Plant Physiol Biochem* 48:909–930
- Gratão PL, Monteiro CC, Antunes AM, Peres LEP, Azevedo RA (2008) Acquired tolerance of tomato (*Lycopersicon esculentum* cv. Micro-Tom) plants to cadmium-induced stress. *Annals Applied Biol* 153:321–333
- Gratão PL, Polle A, Lea PJ, Azevedo RA (2005) Making the life of heavy metal-stressed plants a little easier. *Funct Plant Biol* 32:481–494
- Gupta A, Sinha S (2007) Assessment of single extraction methods for the prediction of bioavailability of metals to *Brassica juncea* L. Czern. (var. Vaibhav) grown on tannery waste contaminated soil. *J Hazard Mater* 149:144–150
- Hagemeyer J (2004) Ecophysiology of plant growth under heavy metal stress. In: Prasad MNV (ed) *Heavy metal stress in plants: from biomolecules to ecosystems*, 2nd edn. Springer, Berlin, pp 201–222
- Kabata-Pendias A, Pendias H (2001) *Trace elements in soils and plants*, 3rd edn. CRC Press, Boca Raton
- Kafel A, Nadgórska-Socha A, Gospodarek J, Babczyńska A, Skowronek M, Kandziara M, Rozpendek K (2010) The effects of *Aphis fabae* infestation on the antioxidant response and heavy metal content in field grown *Philadelphus coronarius* plants. *Sci Total Environ* 408 (5):1111–1119

- Keller C, Hammer D (2004) Metal availability and soil toxicity after repeated croppings of *Thlaspi caerulescens* in metal contaminated soils. *Environ Pollut* 131:243–254
- Kim ND, Fergusson JE (1994) Seasonal variations in the concentrations of cadmium, copper, lead and zinc in leaves of the horse chestnut (*Aesculus hippocastanum* L.). *Environ Pollut* 86:89–97
- Kozanecka T, Chojnicki J, Kwasowski (2002) Content of heavy metals in plant from pollution-free regions. *Polish J Environ Stud* 11 (4):395–399
- Kumar N, Pal M, Singh A, Kumar SaiRam R, Srivastava GH (2010) Exogenous proline alleviates oxidative stress vase life in rose (*Rosa hybrida* L. 'Grand Gala'). *Sci Hortic* 127:79–85
- Liu J, Xiong Z, Li T, Huang H (2004) Bioaccumulation and ecophysiological responses to copper stress in two populations of *Rumex dentatus* L. from Cu contaminated and non-contaminated sites. *Environ Exp Bot* 52(1):43–51
- Macfarlane GR, Burchett MD (2001) Photosynthetic pigments and peroxidase activity as indicators of heavy metal stress in the Grey Mangrove *Avicennia marina* (Forsk.) Veirh. *Mar Pollut Bull* 42:233–240
- Madhava Rao KV, Sresty TVS (2000) Antioxidative parameters in the seedling of pigeonpea (*Cajanus cajan* L. Millspaugh) in response to Zn and Ni stresses. *Plant Science* 157:113–128
- Markkola AM, Tarvainen O, Ahonen-Jonnarth U, Strömmer R (2002) Urban polluted soils induce elevated root peroxidase activity in Scots pine (*Pinus sylvestris* L.) seedlings. *Environ Pollut* 116:273–278
- Martin M, Couphrey P (1982) Biological monitoring of heavy metal pollution. Applied Sciences Publications, London
- Martz F, Jaakola L, Julkunen-Tiitto R, Stark S (2010) Phenolic composition and antioxidant capacity of bilberry (*Vaccinium myrtillus*) leaves in Northern Europe following foliar development and along environmental gradients. *J Chem Ecol* 36:1017–1028
- Mass F, De Kok L, Peters J, Kuiper PA (1987) Comparative study on the effects of H<sub>2</sub>S and SO<sub>2</sub> fumigation on the growth and accumulation of sulfate and sulfhydryl compounds in *Trifolium pratense* L., *Glycine max* Merr., *Phaseolus vulgaris* L. *J Exp Bot* 38:1459–1469
- Mesmar MN, Jaber K (1991) The toxic effect of lead on seed germination, growth, chlorophyll and protein contents of wheat and lens. *Acta Biol Hung* 42(4):331–344
- Mishra S, Srivastava S, Tripathi RD, Kumar R, Seth CS, Gupta DK (2006) Lead detoxification by coontail (*Ceratophyllum demersum* L.) involves induction of phytochelatins and antioxidant system in response to its accumulation. *Chemosphere* 65:1027–1039
- Mishra S, Tripathi RD, Srivastava S, Dwivedi S, Trivedi PK, Dhankher OP, Khare A (2009) Thiol metabolism play significant role during cadmium detoxification by *Ceratophyllum demersum* L. *Bioresour Technol* 100:2155–2161
- Mróz L, Demczuk M (2010) Contents of phenolics and chemical elements in bilberry (*Vaccinium myrtillus* L.) leaves from copper smelter area. *Pol J Ecol* 58(3):475–486
- Nadgórska-Socha A, Kafel A, Gospodarek J (2008) Heavy metals in leaves and physiological of *Philadelphus coronarius* L. in urban and unpolluted areas. *Scripra Facultatis Naturalium Univ Ostraviensis* 186:278–284
- Nadgórska-Socha A, Kandziora-Ciupa M, Ciepał R, Walasek K (2011) Effects of Zn, Cd, Pb on physiological response of *Silene vulgaris* plants from selected populations. *Polish J Environ Stud* 20 (3):599–604
- Nadgórska-Socha A, Kafel A, Kandziora-Ciupa M, Gospodarek J, Zawisza-Raszka A (2012) Accumulation of heavy metals and antioxidant responses in *Vicia faba* plants grown on monometallic contaminated soil. *Environ Sci Pollut Res*. doi:10.1007/s11356-012-1191-7
- Nikolić N, Kojić D, Pilipović A, Pajević S, Krstić B, Borišev M, Orlović S (2008) Responses of hybrid poplar to cadmium stress: photosynthetic characteristics, cadmium and proline accumulation, and antioxidant enzyme activity. *Acta Biol Cracov Ser Bot* 502:95–103
- Oliva M, José Vicente J, Gravato C, Guilhermino L, Dolores Galindo-Riaño M (2012) Oxidative stress biomarkers in Senegal sole, *Solea senegalensis*, to assess the impact of heavy metal pollution in a Huelva estuary (SW Spain): seasonal and spatial variation. *Ecotoxicol Environ Saf* 75(1):151–162
- Ostrowska A, Gawliński S, Szczubińska Z (1991) In: Method of analysis and estimate soil and plants property, Catalogue of the Environmental Protection Institute Warsaw pp 334–336 (in Polish)
- Peijnenburg WJ, Jager T (2003) Monitoring approaches to assess bioaccessibility and bioavailability of metals: matrix issues. *Ecotoxicol Environ Saf* 56:63–77
- Piechalak A, Tomaszewska B, Baralkiewicz D, Małeczka A (2002) Accumulation and detoxification of lead ions in legumes. *Phytochemistry* 60:153–162
- Pongrac P, Zhao FJ, Razinger J, Zrimec A, Regvar M (2009) Physiological responses to Cd and Zn in two Cd/Zn hyperaccumulating *Thlaspi* species. *Environ Exp Bot* 66:479–486
- Prasad MNV (1999) Heavy metal stress in plants: from biomolecules to ecosystems. Springer, Berlin
- Prokop Z, Cupr P, Zlevorova-Zlamalikova V, Komarek J, Dusek L, Holoubek I (2003) Mobility, bioavailability, and toxic effects of cadmium in soil samples. *Environ Res* 91(2):119–126
- Pueyo M, Lopez-Sanchez JF, Rauret G (2004) Assessment of CaCl<sub>2</sub>, NaNO<sub>3</sub> and NH<sub>4</sub>NO<sub>3</sub> extraction procedures for the study of Cd, Cu, Pb and Zn extractability in contaminated soils. *Anal Chimica Acta* 504:217–226
- Radotić K, Ducić T, Mutavdžić D (2000) Changes in peroxidase activity and isoenzymes in spruce needles after exposure to different concentrations of cadmium. *Environ Exp Bot* 44:105–113
- Reimann C, Koller F, Frengstad B, Kashulina G, Niskavaara H, Englmaier P (2001) Comparison of the element composition in several plant species and their substrate from a 1500000-km<sup>2</sup> area in Northern Europe. *Sci Total Environ* 278:87–112
- Salemaa M, Derome J, Helmsaari H-S, Nieminen T, Vanha-Majamaa I (2004) Element accumulation in boreal bryophytes, lichens and vascular plants exposed to heavy metal and sulfur deposition in Finland. *Sci Total Environ* 324:141–160
- Sandalio LM, Dalurzo HC, Gómez M, Romero-Puertas MC, Del Río LA (2001) Cadmium-induced changes in the growth and oxidative metabolism of pea plants. *J Exp Bot* 52(364):2115–2126
- Schat H, Sharma S, Vooijs R (1997) Heavy metal-induced accumulation of free proline in metal tolerant and nontolerant ecotype of *Silene vulgaris*. *Physiol Plantarum* 101:477–482
- Schützendübel A, Schwanz P, Teichmann T, Gross K, Langenfeld-Heysler R, Godbold DL, Polle A (2001) Cadmium-induced changes in antioxidative systems, hydrogen peroxide content and differentiation in Scots Pine roots. *Plant Physiol* 127:887–892
- Seregin I, Ivanov V (2001) Physiological aspects of cadmium and lead toxic effects on higher plants. *Russ J Plant Physiol* 48:523–544
- Sharma SS, Dietz KJ (2006) The significance of amino acids and amino acid-derived molecules in plant responses and adaptation to heavy metal stress. *J Exp Bot* 57:711–726
- Singh AK, Misra P, Tandon PK (2006) Phytotoxicity of chromium in paddy (*Oryza sativa* L.) plants. *J Environ Biol* 27(2):283–285
- Stobrawa K, Lorenc-Plucińska G (2007) Changes in antioxidant enzyme activity in the fine roots of black poplar (*Populus nigra* L.) and cottonwood (*Populus deltoides* Bartr. Ex Marsch) in heavy-metal-polluted environment. *Plant Soil* 298:57–68
- Sudhakar S, Seema M, Rudra DT, Sanjay D, Dharmendra KG (2006) Copper-induced oxidative stress and responses of antioxidants and phytochelatin in *Hydrilla verticillata* (L.f.) Royle. *Aquat Toxicol* 80:405–415
- Tokalioglu S, Kartal S, Elc L (2000) Determination of heavy metals and their speciation in lake sediments by flame atomic absorption spectrometry after a four-stage sequential extraction procedure. *Anal Chim Acta* 413(1–2):33–40

- Tripathi BN, Gaur JP (2004) Relationship between copper- and zinc-induced oxidative stress and proline accumulation in *Scenedesmus* sp. *Planta* 219:397–404
- Uhlig C, Junttila O (2001) Airborne heavy metal pollution and its effects on foliar elemental composition of *Empetrum hermaphroditum* and *Vaccinium myrtillus* in Sor-Varanger, northern Norway. *Environ Pollut* 114:461–469
- Ullrich SM, Ramsey MH, Helios-Rybicka E (1999) Total and exchangeable concentrations of heavy metals in soils near Bytom, an area of Pb/Zn mining and smelting in Upper Silesia, Poland. *Appl Geochem* 14:187–196
- Unyayar S, Celik A, Cekic FO, Gozel A (2006) Cadmium-induced genotoxicity, cytotoxicity and lipid peroxidation in *Allium sativum* and *Vicia faba*. *Mutagenesis* 21:77–81
- van Gestel CAM (2008) Physico-chemical and biological parameters determine metal bioavailability in soils. *Sci Total Environ* 406(3):385–395
- Xiang C, Oliver DJ (1998) Glutathione metabolic genes coordinately respond to heavy metals and jasmonic acid in *Arabidopsis*. *Plant Cell* 10:1539–1550
- Xiao R, Bai JH, Wang QG, Gao HF, Huang LB, Liu XH (2011) Assessment of heavy metal contamination of wetland soils from a typical aquatic–terrestrial ecotone in Haihe River Basin, North China. *CLEAN-Soil, Air Water* 39(7):612–618
- Yadav SK (2010) Heavy metals toxicity in plants: an overview on the role of glutathione and phytochelatins in heavy metal stress tolerance of plants. *South African J Bot* 76:167–179