

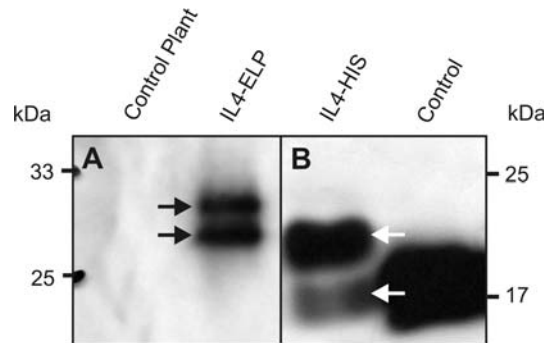
## Elastin-like polypeptide fusions enhance the accumulation of recombinant protein in tobacco leaves

Jignasha Patel · Hong Zhu · Rima Menassa ·  
Laszlo Gyenis · Alex Richman · Jim Brandle

Published online: 15 February 2007  
© Springer Science+Business Media B.V. 2007

**Erratum to: Transgenic Res**  
DOI: 10.1007/s11248-006-9026-2

Due to an unfortunate technical error during the production process of the above mentioned article, the figure caption of Fig. 5 has been duplicated and also used for Fig. 6. The correct representation of Fig. 6 and its caption has been published on this page and should be treated as definitive by the reader.



**Fig. 6** Western analysis of interleukin-4 protein. **(A)** Immunoprecipitated from untransformed 81V9 control plants (lane 1) and from IL4-ELP transgenic plants (lane 2) protein and **(B)** IMAC purified IL4-HIS from crude protein extracts of agroinfiltrations of 81V9 leaves with IL4-HIS (lane 1) and recombinant murine IL4 control protein (lane 2). The arrow heads mark the position of the target protein

The online version of the original article can be found at  
<http://dx.doi.org/10.1007/s11248-006-9026-2>

J. Patel · H. Zhu · R. Menassa · L. Gyenis ·  
A. Richman · J. Brandle (✉)  
Agriculture and AgriFood Canada, Southern Crop  
Protection and Food Research Center, 1391 Sandford  
Street, London, Ontario N5V 4T3, Canada  
e-mail: brandleje@agr.gc.ca