

Erratum to: Oenological significance of vineyard management zones delineated using early grape sampling

**I. Urretavizcaya · L. G. Santesteban · B. Tisseyre · S. Guillaume ·
C. Miranda · J. B. Royo**

Published online: 10 January 2014
© Springer Science+Business Media New York 2014

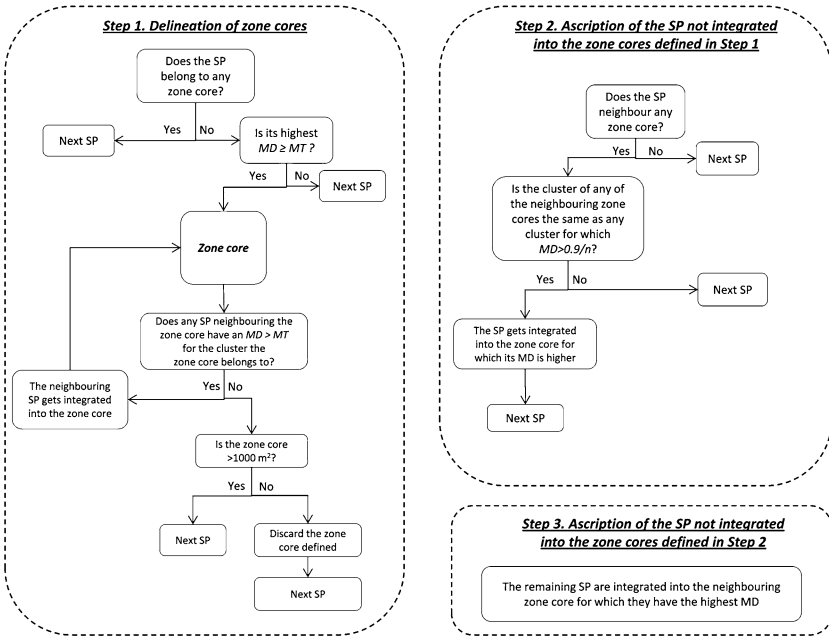
Erratum to: Precision Agric
DOI 10.1007/s11119-013-9328-3

Unfortunately, Fig. 2 was incorrectly published as the two algorithms depicted were the same in the original publication of the article. The corrected Fig. 2 appears below.

The online version of the original article can be found under doi:[10.1007/s11119-013-9328-3](https://doi.org/10.1007/s11119-013-9328-3).

I. Urretavizcaya · L. G. Santesteban (✉) · B. Tisseyre · S. Guillaume · C. Miranda · J. B. Royo
Dpt. Prod. Agraria, Universidad Pública de Navarra, Pamplona, Navarra, Spain
e-mail: gonzaga.santesteban@unavarra.es

(a) Standard zoning (StdZ)



(b) Top zoning (TopZ)

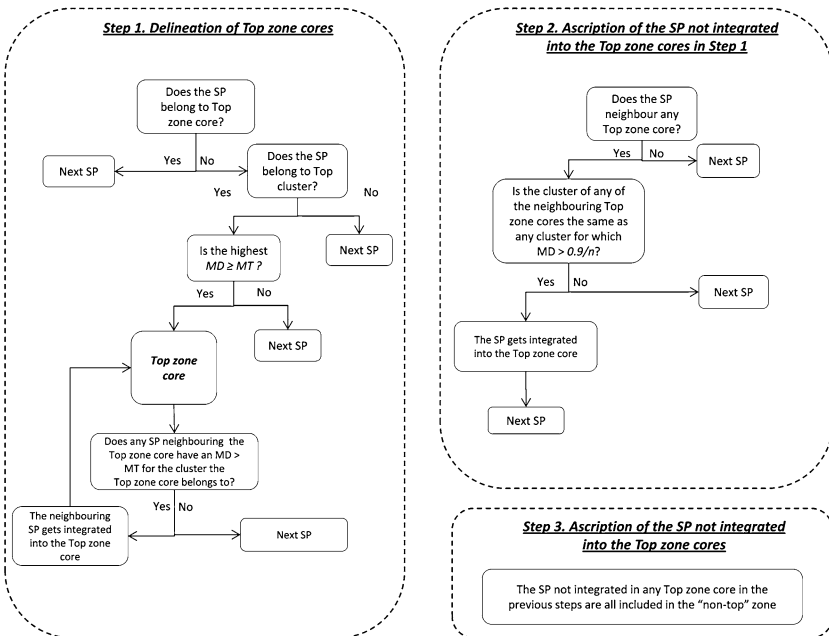


Fig. 2 Decision trees designed to delineate **a** standard (StdZ) or **b** top quality (TopZ) zones from the clusters defined by fuzzy k-means analysis. *SP* sampling point, *MD* membership degree, *MT* membership threshold, *n* number of cluster