



## Correction to: LC–MS based metabolic fingerprinting of apricot pistils after self-compatible and self-incompatible pollinations

József Lénárt<sup>1,2</sup> · Attila Gere<sup>3</sup> · Tim Causon<sup>4</sup> · Stephan Hann<sup>4</sup> · Mihály Dernovics<sup>5</sup> · Olga Németh<sup>1</sup> · Attila Hegedűs<sup>2</sup> · Júlia Halász<sup>2</sup> 

Published online: 12 January 2021  
© The Author(s) 2021

**Correction to: Plant Molecular Biology**  
<https://doi.org/10.1007/s11103-020-01098-5>

In the above mentioned publication, Fig. 3 was incorrect as the panels for SC and SI cultivars were transposed. The original article has been corrected and the proper version of Fig. 3 is also published here.

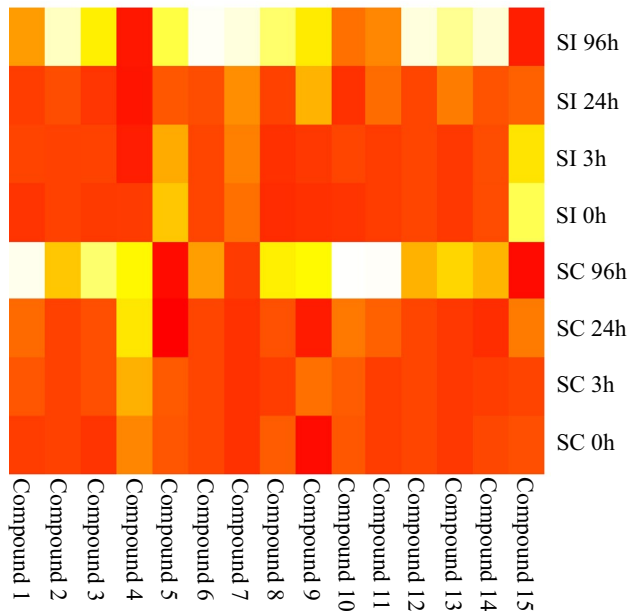
---

The original article can be found online at <https://doi.org/10.1007/s11103-020-01098-5>.

---

✉ Júlia Halász  
genetics.prunus@gmail.com

- <sup>1</sup> Department of Applied Chemistry, Faculty of Food Science, Szent István University, Villányi út 29-43, Budapest 1118, Hungary
- <sup>2</sup> Department of Genetics and Plant Breeding, Faculty of Horticultural Science, Szent István University, Ménesi út 44, Budapest 1118, Hungary
- <sup>3</sup> Department of Postharvest Sciences and Sensory Evaluation, Faculty of Food Science, Szent István University, Villányi út 29-43, 1118 Budapest, Hungary
- <sup>4</sup> Institute of Analytical Chemistry, University of Natural Resources and Life Sciences, Muthgasse 18, 1190 Vienna, Austria
- <sup>5</sup> Department of Plant Physiology, Agricultural Institute, Centre for Agricultural Research, Brunszvik u. 2, Martonvásár 2462, Hungary



**Fig. 3** Heatmap illustration of components differing between incompatible and compatible pollinations and among time intervals (0, 3, 24 and 96 h) after self-pollination. The higher is the intensity of the compound, the darker is its colour

**Publisher's Note** Springer Nature remains neutral with regard to jurisdictional claims in published maps and institutional affiliations.