

Application of Radial Basis Functional Link Networks to Exploration for Proterozoic Mineral Deposits in Central Iran

Pouran Behnia^{1,2}

**ERRATUM TO: *NATURAL RESOURCES RESEARCH*, VOL. 16, NO. 2, JUNE 2007
DOI: 10.1007/S11053-007-9036-7**

The incorrect version of Figure 4 was inadvertently placed in the article. The correct version follows on the next page.

¹Geomatics Department, Geological Survey of Iran, Tehran, Iran.

²To whom correspondence should be addressed; e-mail: pouranb@yahoo.com

The online version of the original article can be found under doi: [10.1007/s11053-007-9036-7](https://doi.org/10.1007/s11053-007-9036-7).

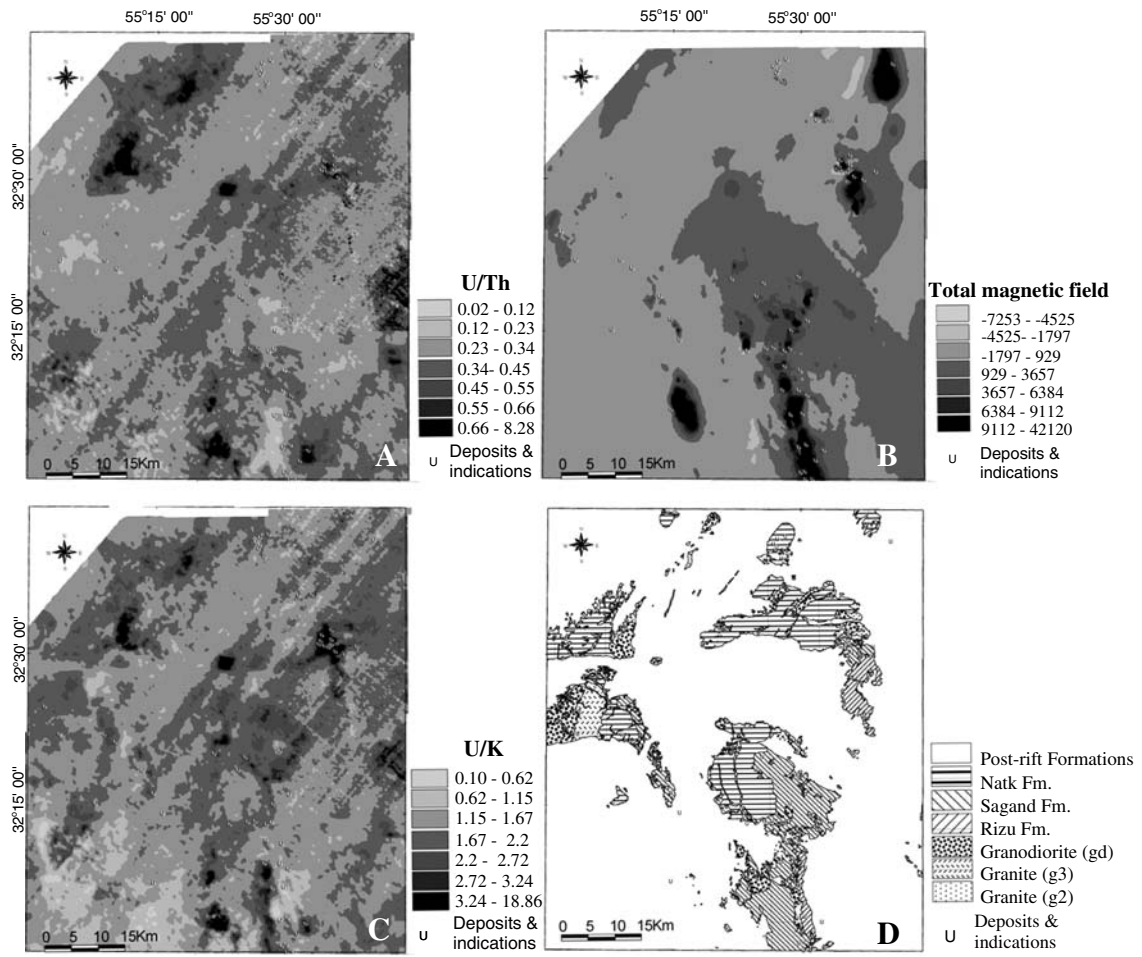


Fig. 4. Multi-class predictive patterns of U/Th ratio (A), total magnetic field (B), U/K ratio (C), and geology (D).