



Correction to: ERK/HIF-1 α /VEGF pathway: a molecular target of ELABELA (ELA) peptide for attenuating cardiac ischemia–reperfusion injury in rats by promoting angiogenesis

Kamran Rakhshan¹ · Masoomeh Sharifi^{2,3} · Fatemeh Ramezani² · Yaser Azizi^{2,3} · Nahid Aboutaleb^{2,3} 

Published online: 29 March 2023
© Springer Nature B.V. 2023

Correction to:

Molecular Biology Reports (2022) 49:10509–10519
<https://doi.org/10.1007/s11033-022-07818-y>

The authors regret that there is one error image in Fig. 3A of this article. The current and corrected.

Figure 3A can be seen as below. The corrections do not alter any findings and conclusions of this study. There are no additional text corrections in the article. The authors would like to apologize for any inconvenience caused.

Publisher's Note Springer Nature remains neutral with regard to jurisdictional claims in published maps and institutional affiliations.

The original article can be found online at <https://doi.org/10.1007/s11033-022-07818-y>.

✉ Nahid Aboutaleb
Aboutaleb.n@iums.ac.ir

Kamran Rakhshan
krakhshan@sina.tums.ac.ir

Masoomeh Sharifi
hastisharifi1982@gmail.com

Fatemeh Ramezani
ramezani.f@iums.ac.ir

Yaser Azizi
Azizi.y@iums.ac.ir

¹ Department of Physiology, School of Medicine, Tehran University of Medical Sciences, Tehran, Iran

² Physiology Research Center, Iran University of Medical Sciences, Tehran, Iran

³ Department of Physiology, Faculty of Medicine, Iran University of Medical Sciences, Tehran, Iran

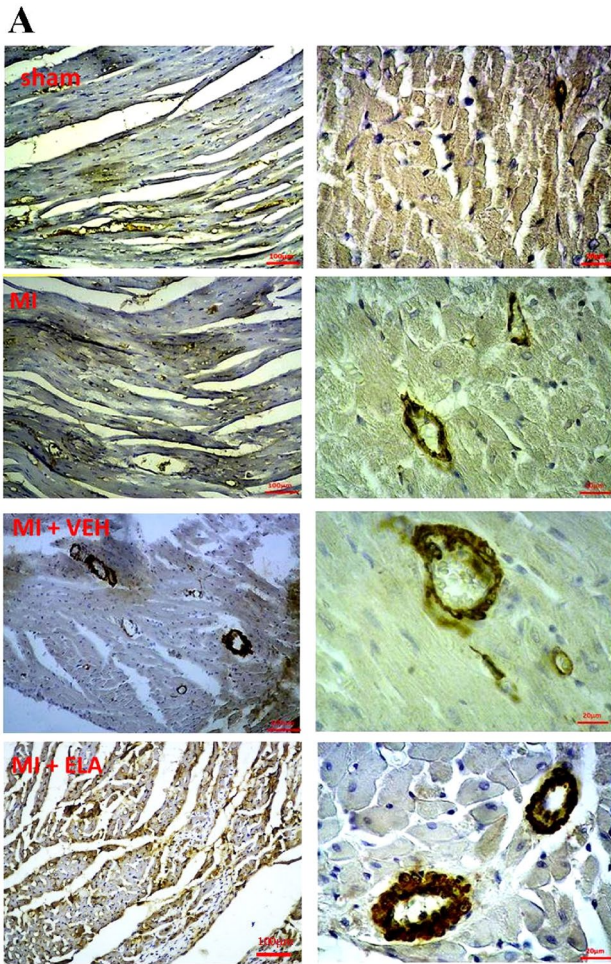


Fig. 3 Immunohistochemical quantification of VEGF at 14 days after reperfusion. **A** Effects ELA on expression level of VEGF at 14 days after reperfusion ($n = 5$) groups, **B** quantified expression level of VEGF (** $p < 0.001$, and * $p < 0.05$ vs. Sham; # $p < 0.05$, vs. MI, $^{\$}p < 0.05$, vs. MI + Vehicle) (scale bar: low magnification: $100 \mu\text{m}$ and high magnification: $20 \mu\text{m}$). Data are presented as mean \pm SEM