



# Correction to: Post-mortem tissue analyses in a patient with succinic semialdehyde dehydrogenase deficiency (SSADHD). I. Metabolomic outcomes

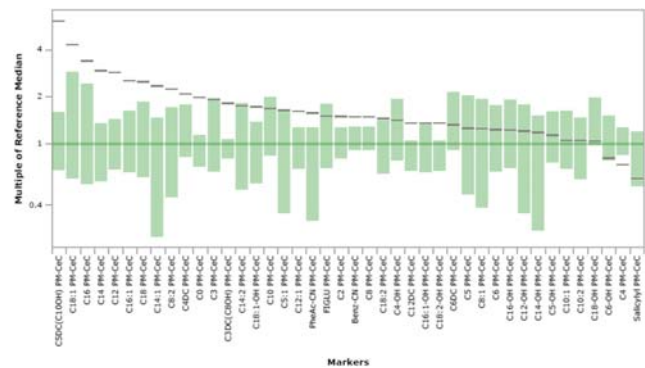
Trevor Kirby<sup>1</sup> · Dana C. Walters<sup>1</sup> · Madalyn Brown<sup>1</sup> · Erwin Jansen<sup>2</sup> · Gajja S. Salomons<sup>2</sup> · Coleman Turgeon<sup>3</sup> · Piero Rinaldo<sup>3</sup> · Erland Arning<sup>4</sup> · Paula Ashcraft<sup>4</sup> · Teodoro Bottiglieri<sup>4</sup> · Jean-Baptiste Rouillet<sup>1</sup> · K. Michael Gibson<sup>1</sup>

Published online: 18 April 2020  
© Springer Science+Business Media, LLC, part of Springer Nature 2020

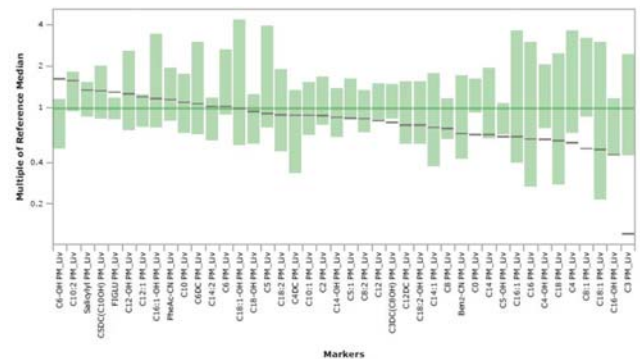
## Correction to: Metabolic Brain Disease <https://doi.org/10.1007/s11011-020-00550-1>

Upon publication, it was noted that five of the on-line supplementary figures had incorrect figure: figure legend associations. These were supplementary Figs. 6, 7, 14, 15, and 23. The correct associations are as follows:

- Suppl. Fig. 6: This figure refers to cerebral cortex (CeC), not hippocampus.
- Suppl. Fig. 7: This figure refers to liver, not cerebral cortex.
- Suppl. Fig. 14: The figure is incorrect, and the correct supplementary Fig. 14 corresponding to this legend is attached.



Suppl. Fig. 15: The figure is incorrect, and the correct supplementary Fig. 15 corresponding to this legend is attached.



Suppl. Fig. 23: The figure legend is incorrect. The appropriate legend is as follows:

**Suppl. Fig. 23. Quantitation of GABA-related metabolites in liver and kidney using isotope dilution mass spectrometry.** Data is depicted as range (mean  $\pm$  SEM) for control ( $n = 4$ ) in both liver (liv) and kidney (kid), as well as showing the individual patient value. Abbreviations: P,

The online version of the original article can be found at <https://doi.org/10.1007/s11011-020-00550-1>

✉ K. Michael Gibson  
mike.gibson@wsu.edu

<sup>1</sup> Department of Pharmacotherapy, Health Sciences Building Room, 210C, College of Pharmacy and Pharmaceutical Sciences, Washington State University, 412 E. Spokane Falls Boulevard, Spokane, WA 99202-2131, USA  
<sup>2</sup> Department of Clinical Chemistry, Metabolic Unit, Amsterdam, University Medical Center (Amsterdam UMC) and VU University, Medical Center (VUmc), Amsterdam, the Netherlands  
<sup>3</sup> Biochemical Genetics Laboratory, Department of Laboratory Medicine and Pathology, Mayo Clinic, Rochester, MN, USA  
<sup>4</sup> Baylor Scott & White Research Institute, Institute of Metabolic Disease, Dallas, TX, USA

patient; C, control; Liv, liver; Kid, kidney; total GABA (including both free and esterified GABA),  $\gamma$ -aminobutyric acid; GHB,  $\gamma$ -hydroxybutyric acid; 4,5-DHHA, 4,5-dihydroxyhexanoic acid; 4-GBA, 4-guanidinobutyric acid; SSA, succinic semialdehyde; GUAC, guanidinoacetic acid.

Since only a single value for the patient was obtained, statistical evaluation was not undertaken.

**Publisher's note** Springer Nature remains neutral with regard to jurisdictional claims in published maps and institutional affiliations.