




Correction to: Downregulation of fibronectin 1 attenuates ATRA-induced inhibition of cell migration and invasion in neuroblastoma cells

Xiaolin Tan¹ · Wei Gong¹ · Bo Chen¹ · Baocheng Gong¹ · Zhongyan Hua¹ · Simeng Zhang¹ · Yang Chen¹ · Qi Li¹ · Zhijie Li¹ 

Published online: 28 February 2022
© Springer Science+Business Media, LLC, part of Springer Nature 2022

Correction to:
Molecular and Cellular Biochemistry
(2021) 476:3601–3612
<https://doi.org/10.1007/s11010-021-04113-5>

In the original publication of the article, the invasion image of FN1-siRNA-transfected SY5Y cells in Fig. 5B, the invasion image of ATRA-treated NGP cells in Fig. 7B and the

The original article can be found online at <https://doi.org/10.1007/s11010-021-04113-5>.

✉ Zhijie Li
lizhijie68@hotmail.com; lizj@sj-hospital.org

¹ Medical Research Center, Liaoning Key Laboratory of Research and Application of Animal Models for Environmental and Metabolic Diseases, Shengjing Hospital of China Medical University, #36 Sanhao Street, Heping District, Shenyang 110004, China

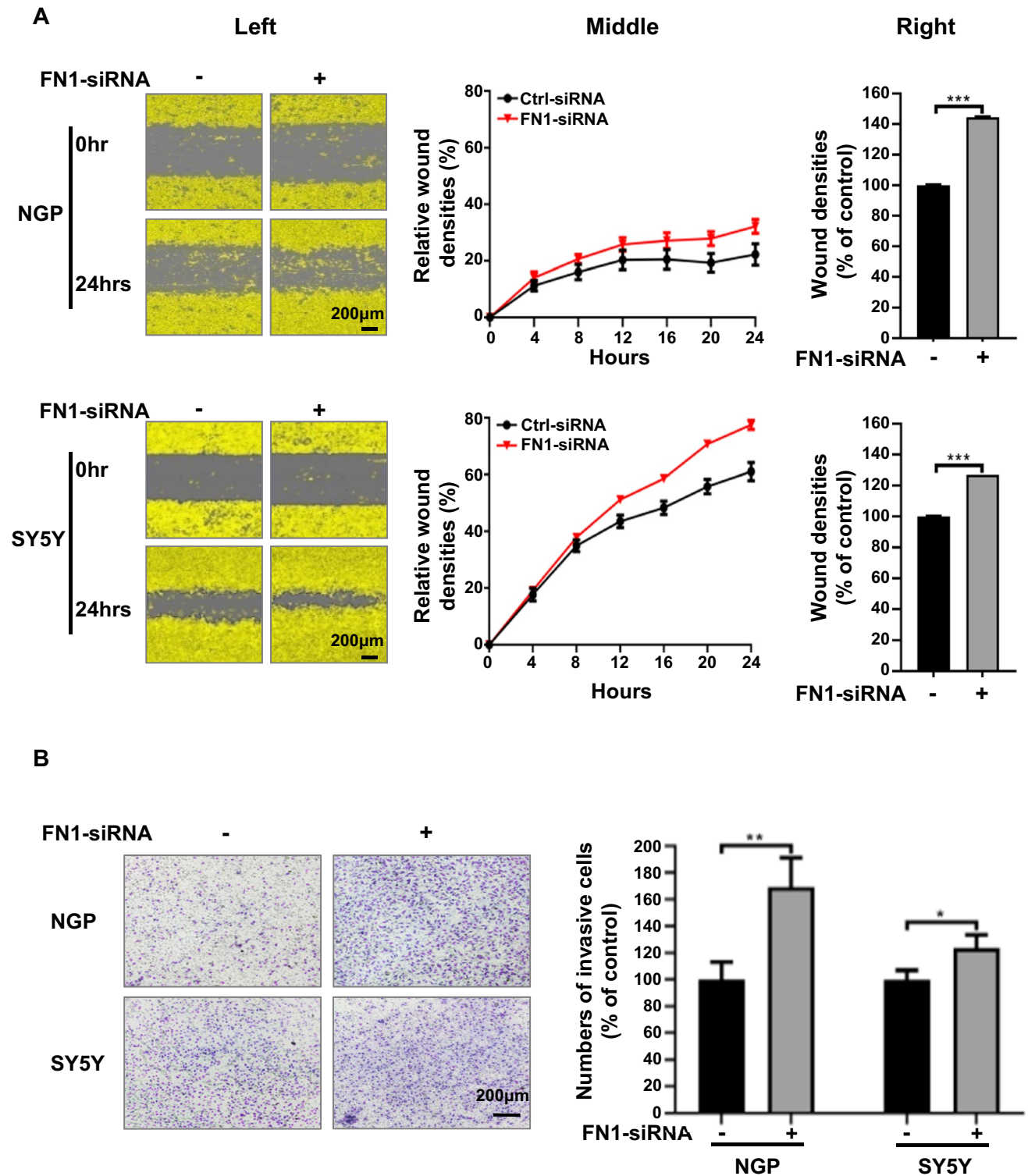


Fig. 5 Downregulation of FN1 increased migration and invasion of NB cells. **A** wound healing assay for two NB cell lines transfected with FN1-siRNA. Data were presented as representative microscopic images taken with an IncuCyte ZOOM (left), relative wound densities (middle) and relative wound densities at the 24 h time point (right).

B A transwell invasion assay for two NB cell lines transfected with FN1-siRNA. Data were presented as representative microscopic images (left) and relative numbers of invasive cells (right). * $P < 0.05$; ** $P < 0.01$. Scale bar = 200 µm

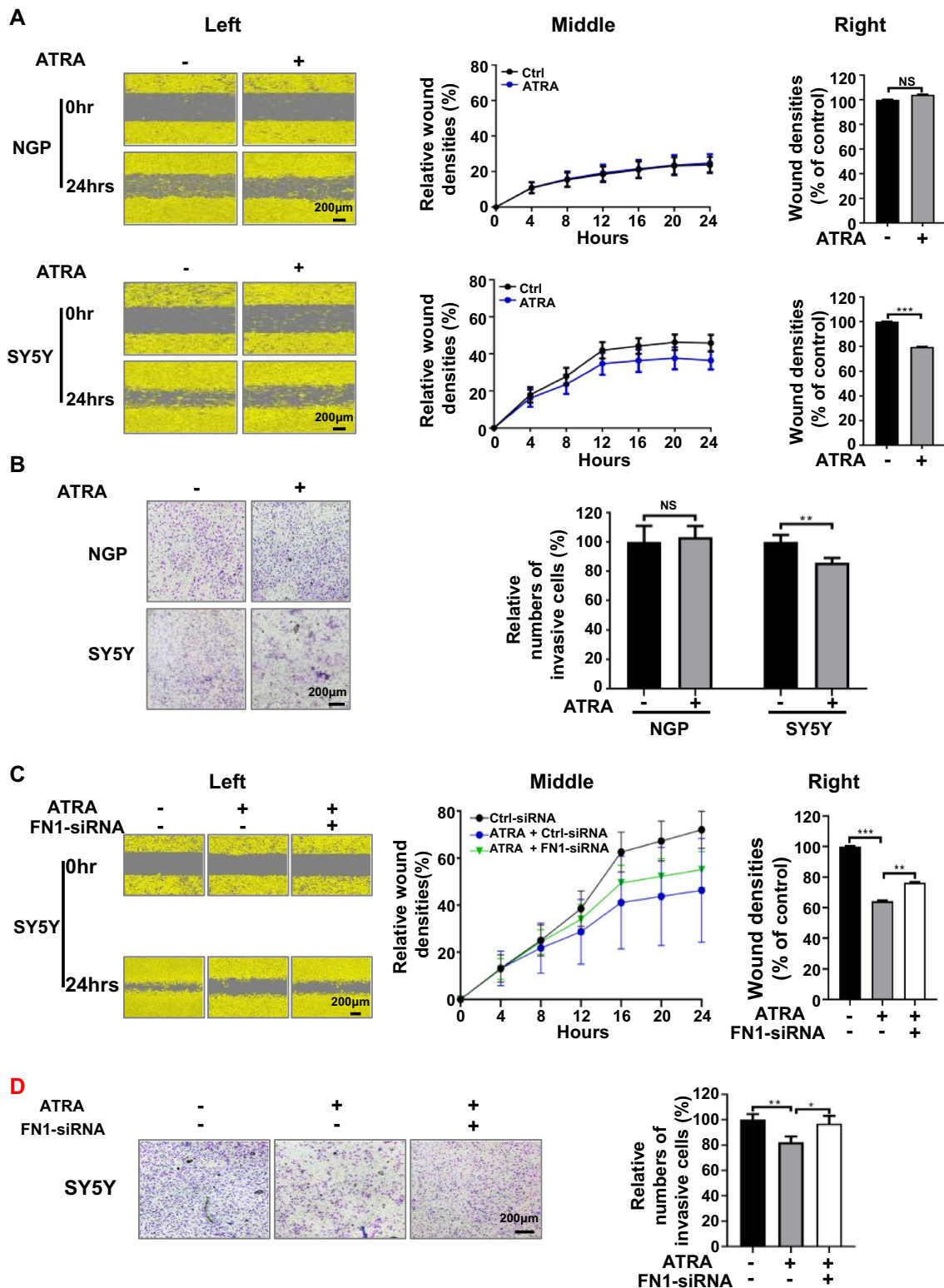


Fig. 7 Downregulation of FN1 partially blocked ATRA-mediated inhibition of cell migration and invasion in SY5Y cells. **A** Data from a wound healing assay, showing representative microscopic images (left), relative wound densities (middle) and relative wound densities at the 24 h time point (right). **B** Data from a transwell invasion assay, showing representative microscopic images (left) and relative numbers of invasive cells (right). **C** Data from a wound healing assay for SY5Y cells, showing rep-

resentative microscopic images (left), dynamic changes of relative wound densities (middle) and relative wound densities at the 24 h time point (right). **D** Data from a transwell invasion assay for SY5Y cells, showing representative microscopic images (left) and relative numbers of invasive cells (right). *NS* no statistical significance. Scale bar = 200 µm

invasion image of control-siRNA-transfected SY5Y cells in Figure 7D were published incorrectly. The correct versions of Figs. 5 and 7 are provided in this correction.

Publisher's Note Springer Nature remains neutral with regard to jurisdictional claims in published maps and institutional affiliations.