



Correction to: A New Shifted Block GMRES Method with Inexact Breakdowns for Solving Multi-Shifted and Multiple Right-Hand Sides Linear Systems

Dong-Lin Sun^{1,2} · Ting-Zhu Huang¹  · Bruno Carpentieri³ · Yan-Fei Jing¹

Published online: 24 August 2018

© Springer Science+Business Media, LLC, part of Springer Nature 2018

Correction to: Journal of Scientific Computing

<https://doi.org/10.1007/s10915-018-0787-6>

The original article contained a mistake. Figure 1 is a duplicate of Fig. 2. The corrected Fig. 1 is given below.

The original article has been corrected.

The original article can be found online at <https://doi.org/10.1007/s10915-018-0787-6>.

✉ Ting-Zhu Huang
tingzhuhuang@126.com

✉ Yan-Fei Jing
00jyfvictory@163.com

Dong-Lin Sun
donglin1220@126.com

Bruno Carpentieri
bcarpentieri@gmail.com

¹ School of Mathematical Sciences/Institute of Computational Science, University of Electronic Science and Technology of China, Chengdu 611731, Sichuan, People's Republic of China

² Johann Bernoulli Institute for Mathematics and Computer Science, University of Groningen, Nijenborgh 9, PO Box 407, 9747 AG Groningen, The Netherlands

³ Faculty of Computer Science, Free University of Bozen-Bolzano, Piazza Domenicani, 3, 39100 Bolzano, Italy

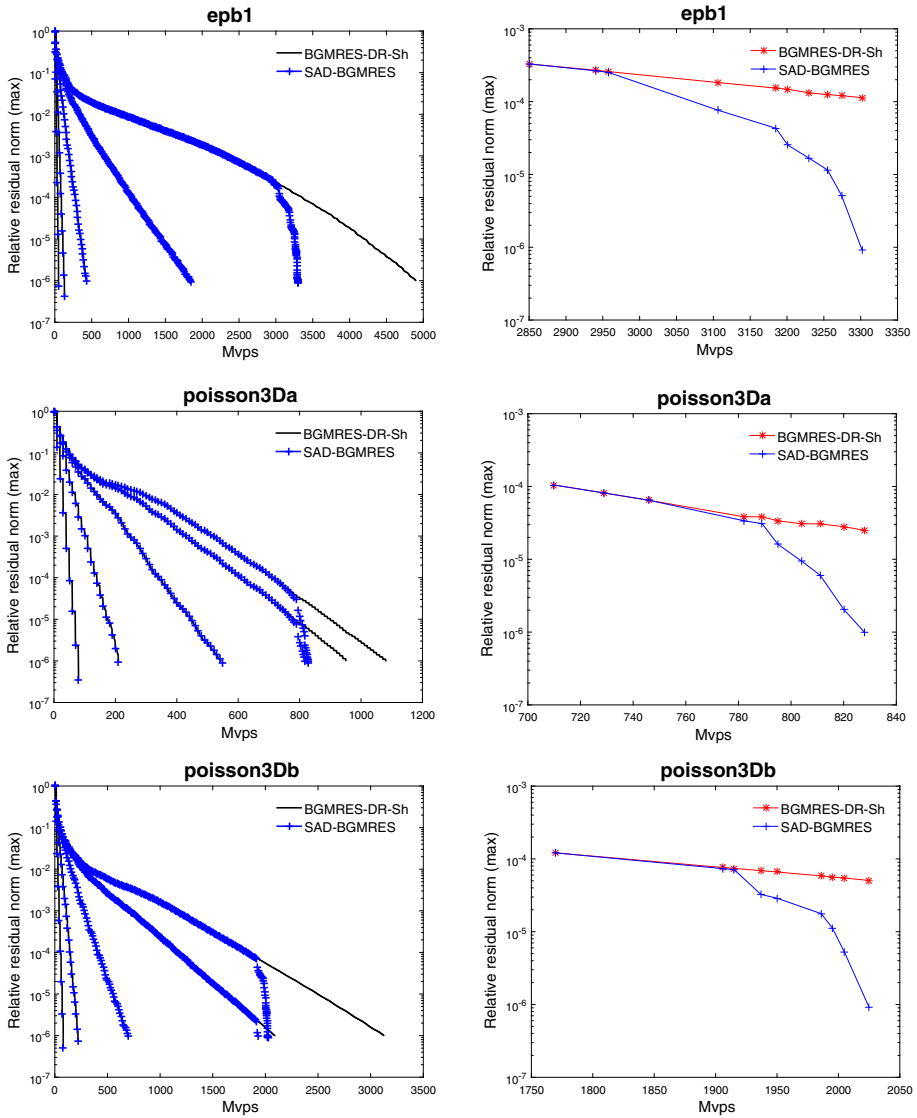


Fig. 1 Convergence histories between the SAD-BGMRES and the BGMRES-DR-Sh methods for solving Examples 1–3. (Left: the different convergence curves correspond to different choice of the shift, right: convergence comparison between SAD-BGMRES and BGMRES-DR-Sh at each time when the inexact breakdown is occurred)