

## Deciduous Dentitions of Eocene Cebochoerid Artiodactyls and Cetartiodactyl Relationships

Jessica M. Theodor · Scott E. Foss

Published online: 8 June 2006  
© Springer Science+Business Media, Inc. 2006

---

**Journal of Mammalian Evolution (2005) 12(1/2):161–181**

In the article by Theodor and Foss, Figs. 3 and 4 appeared with incorrect legends. The figures are presented here, with the correct legends.

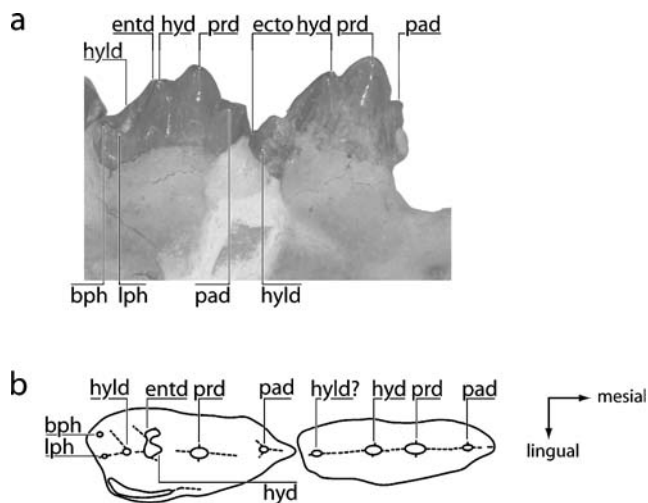
---

The online version of the original article can be found at  
<http://dx.doi.org/10.1007/s10914-005-5706-6>

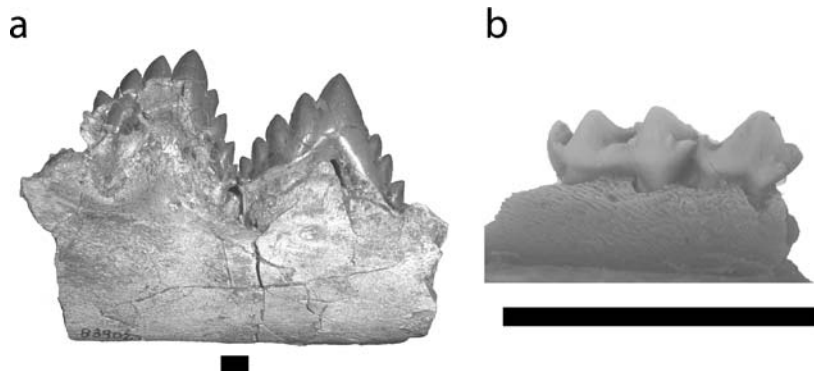
---

J. M. Theodor (✉)  
Department of Geology, Illinois State Museum, Springfield, Illinois 62703, USA  
e-mail: [jtheodor@museum.state.il.us](mailto:jtheodor@museum.state.il.us)

S. E. Foss  
John Day Fossil Beds National Monument, Kimberly, Oregon 97848, USA



**Fig. 3** Cusp terminology for deciduous lower premolars of cebochoerids. (a) lingual view of dp2-3, MNHN.EBA327, (b) occlusal view of dp2-3. bph—buccal posthypoconulid; ecto—ectostylid; entd—entoconid; hyd—hypoconid; hyl—hypoconulid; lph—lingual posthypoconulid; pad—paraconid; prd—protoconid



**Fig. 4** Deciduous teeth of (a) *Dorudon atrox*, UM 83902, buccal view dp3-4, photograph courtesy of Mark Uhen. (b) *Antiacodon pygmaeus*, CMNH 53969, buccal view dp3-4. Scale bars denote 1 cm