



## Correction to: Local inhomogeneous conduction and non-uniform anisotropy in a normal voltage atrial map

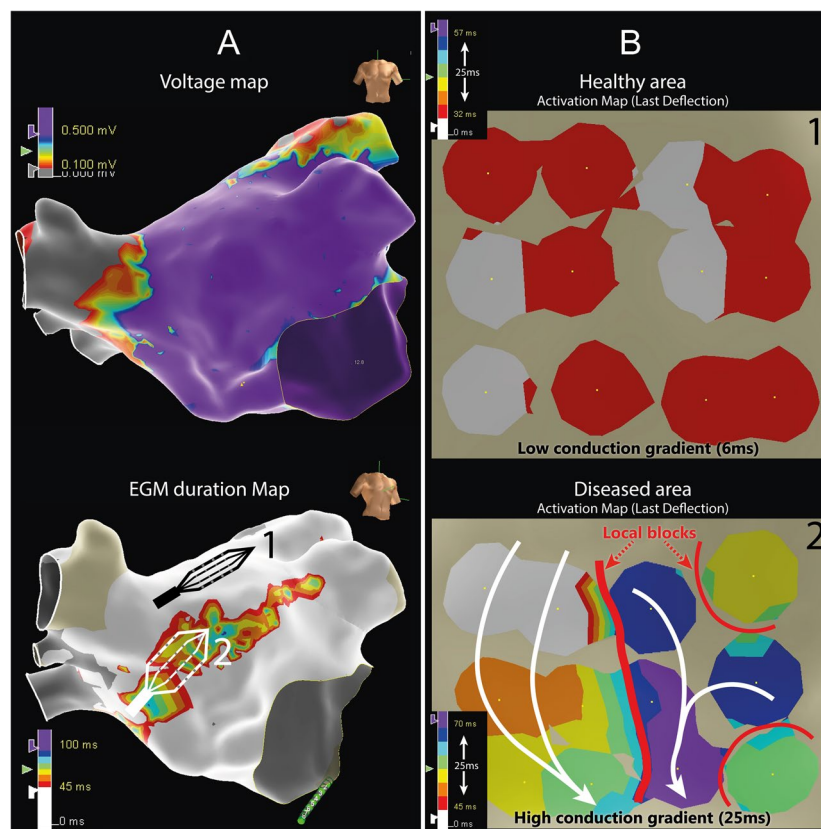
Pietro Rossi<sup>1</sup> · Filippo Maria Cauti<sup>1</sup> · Marco Polsellì<sup>1</sup> · Sara Corradetti<sup>1</sup> · Stefano Bianchi<sup>1</sup>

Published online: 4 April 2022

© The Author(s), under exclusive licence to Springer Science+Business Media, LLC, part of Springer Nature 2022

Correction to: *Journal of Interventional Cardiac Electrophysiology*  
<https://doi.org/10.1007/s10840-022-01162-8>

Figure was missing from this article; the figure should have appeared as shown below.



The original article can be found online at <https://doi.org/10.1007/s10840-022-01162-8>.

✉ Pietro Rossi  
rossi.ptr@gmail.com

<sup>1</sup> Cardiology Division, Arrhythmology Unit, S. Giovanni Calibita Hospital, Isola Tiberina, Via Ponte Quattro Capi, 39, 00186 Rome, Italy

The original article has been corrected.

**Publisher's Note** Springer Nature remains neutral with regard to jurisdictional claims in published maps and institutional affiliations.